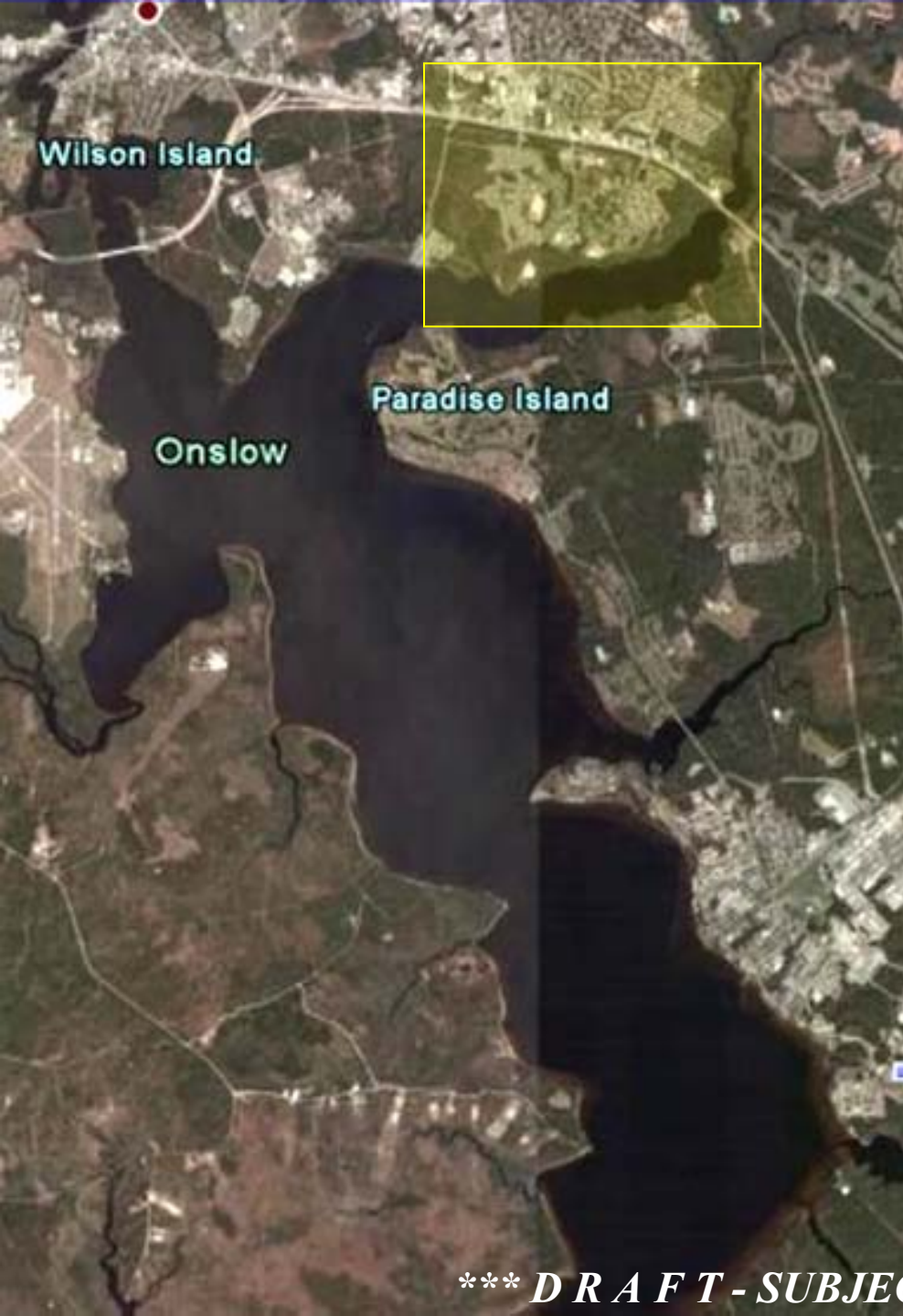


Approach to Numerical Groundwater-Flow and Contaminant Fate and Transport Modeling

René J. Suárez-Soto
Environmental Health Scientist
Agency for Toxic Substances and Disease Registry

Hadnot Point/Holcomb Boulevard Modeling Approach

- Groundwater Flow Modeling-Regional
 - Steady-State
 - Transient
- Groundwater Flow Modeling-Local
- Contaminant Fate and Transport-Local



Tarawa Terrace Model

- Groundwater Flow (MODFLOW)
- Contaminant Fate and Transport (MT3DMS)
- Simple Mixing Model (WTP)
- Water Distribution System (EPANET)

51,450 ft

5 mi²

Drains

No-flow

New River

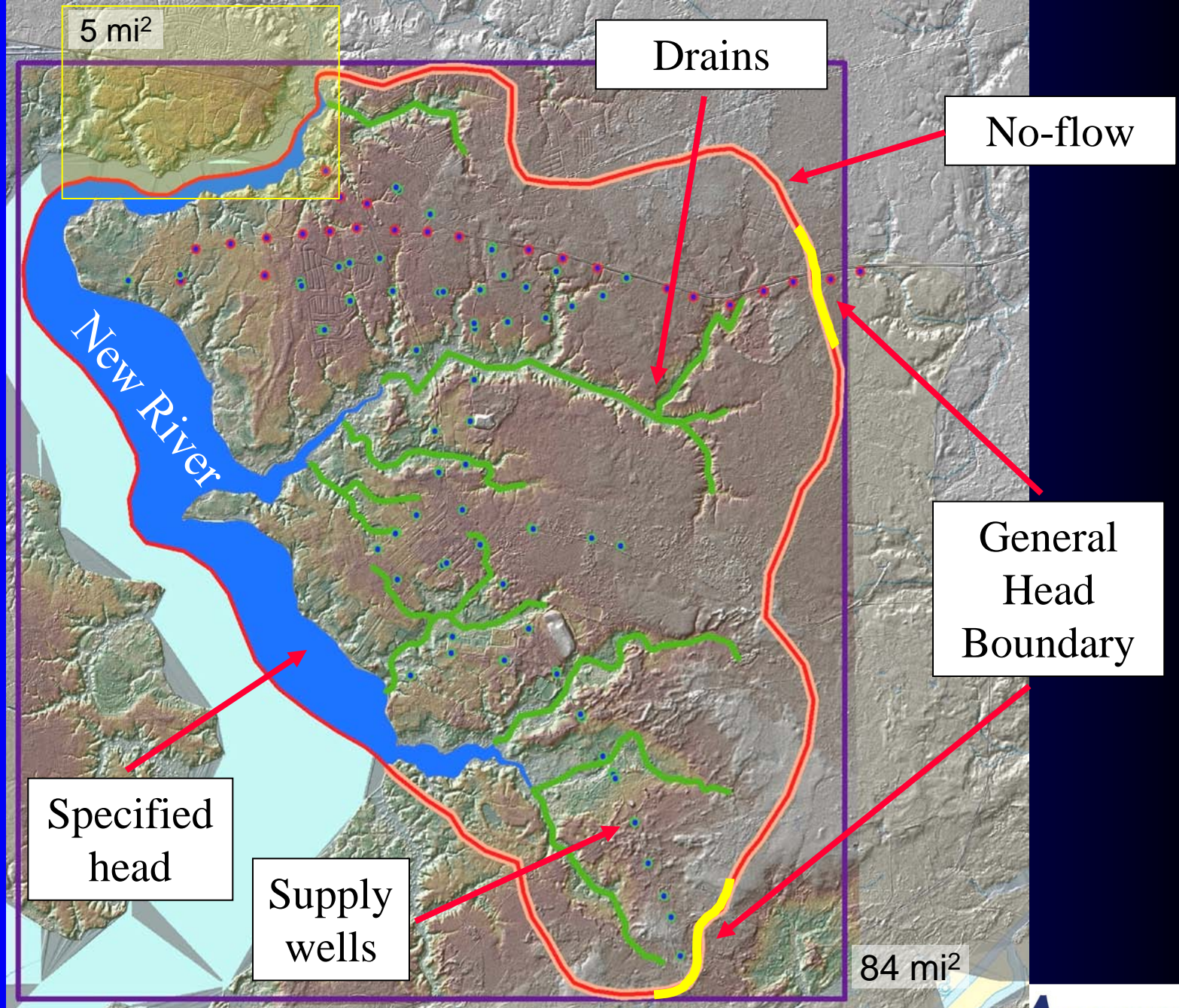
General
Head
Boundary

Specified
head

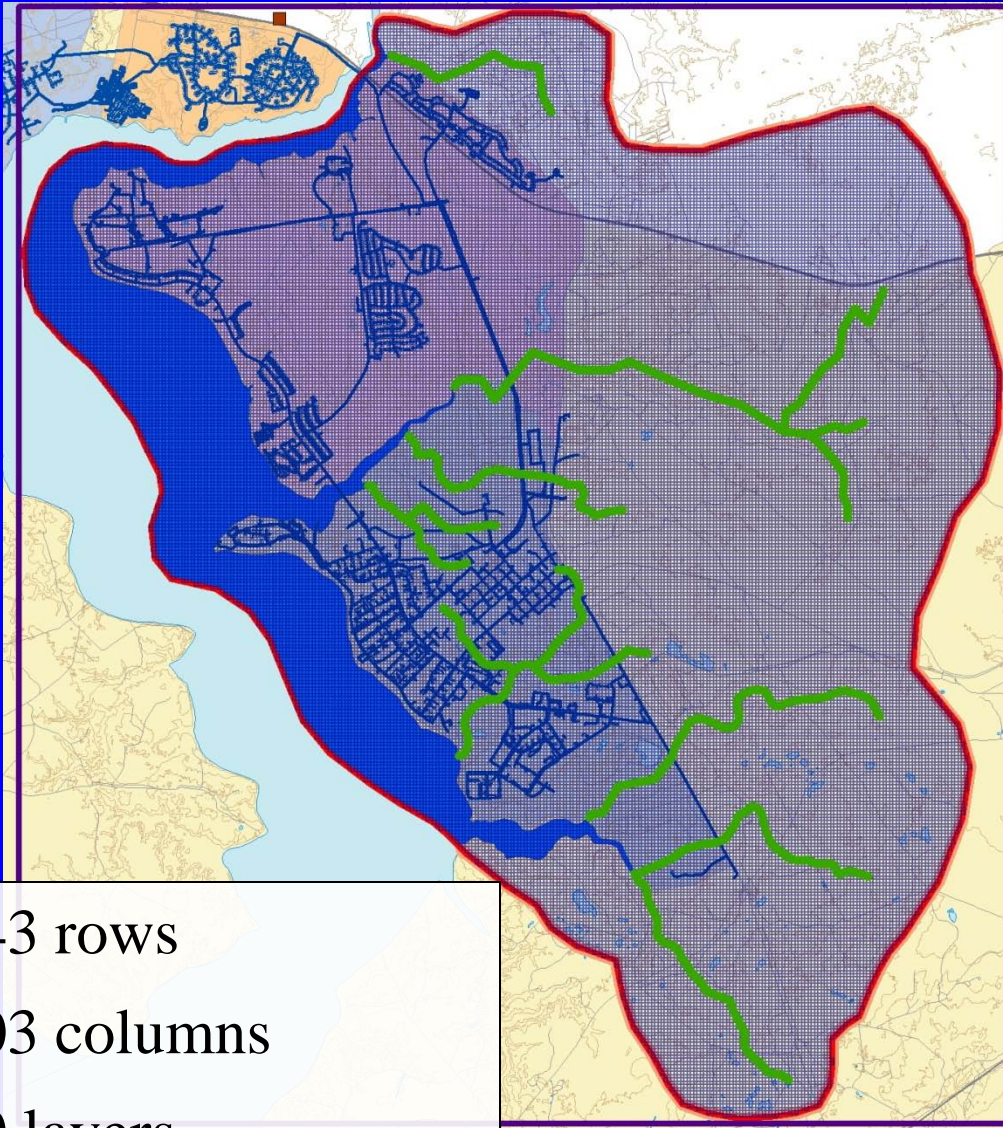
Supply
wells

84 mi²

45,450 ft
*** DRAFT - SUBJECT TO CHANGE ***



HPHB grid design



GEOHYDROLOGIC UNIT	MODEL LAYER
Brewster Boulevard Upper Aquifer	LAYER 1
<u>Brewster Boulevard Upper Confining Unit</u>	
Brewster Boulevard Lower Aquifer	
<u>Brewster Boulevard Lower Confining Unit</u>	
Tarawa Terrace aquifer	LAYER 2
<u>Tarawa Terrace confining unit</u>	LAYER 3
Upper Castle Hayne aquifer–River Bend unit	LAYER 4
<u>Local confining unit</u>	LAYER 5
Upper Castle Hayne aquifer–Lower unit	LAYER 6
<u>Middle Castle Hayne confining unit</u>	LAYER 7
Middle Castle Hayne aquifer	LAYER 8
<u>Lower Castle Hayne confining unit</u>	LAYER 9
Lower Castle Hayne aquifer	LAYER 10
<u>Beaufort Confining Unit</u>	BASE OF MODEL

343 rows
 303 columns
 10 layers
 Cell size=150 ft/side

DRAFT - SUBJECT TO CHANGE ***

PEST optimization

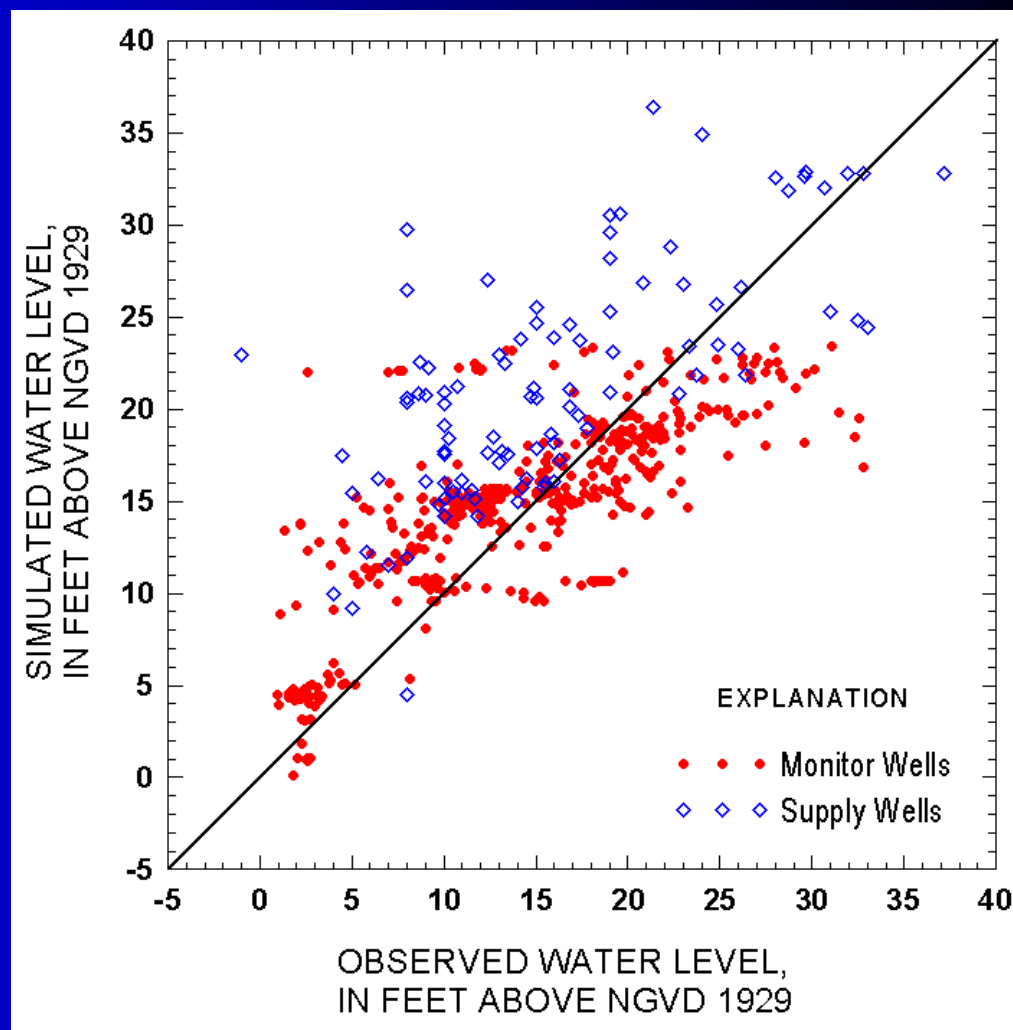
Iteration	Φ	Horizontal Hydraulic Conductivity						Recharge	
		Layer 1 ft/day	Layer 2 ft/day	Layer 4 ft/day	Layer 6 ft/day	Layer 8 ft/day	Layer 10 ft/day	Zone 1	Zone 2
1	60479	13.5	23.5	37.4	37.4	15.5	15.5	0.00200	0.00200
2	42427	2.7	24.7	35.4	37.0	15.8	17.1	0.00141	0.00308
3	41891	5.1	26.4	34.3	37.1	16.5	18.8	0.00141	0.00365
4	40987	6.9	29.4	29.9	36.0	15.7	21.2	0.00136	0.00369
5	40914	3.6	31.8	6.0	29.2	10.5	31.6	0.00134	0.00313
6	40900	3.5	32.3	1.2	28.4	9.1	34.5	0.00134	0.00298
Total model calls = 78									

$$\Phi = \sum_{i=1}^n (h_o - h_s)^2$$

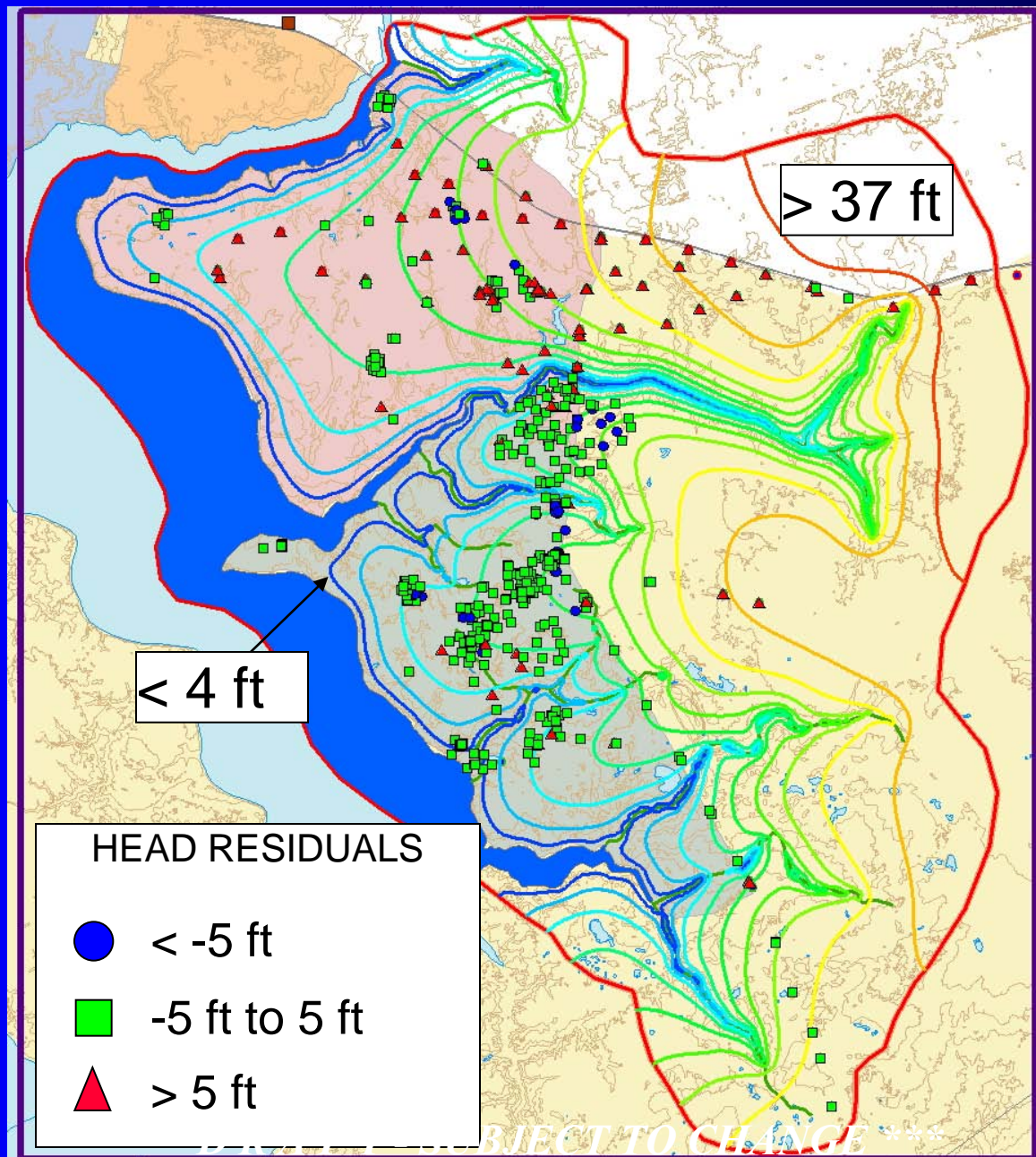
*** DRAFT - SUBJECT TO CHANGE ***

Calibration results

- Automated Parameter Calibration
 - PEST
 - UCODE
 - RMS Error = 5.46 ft
-



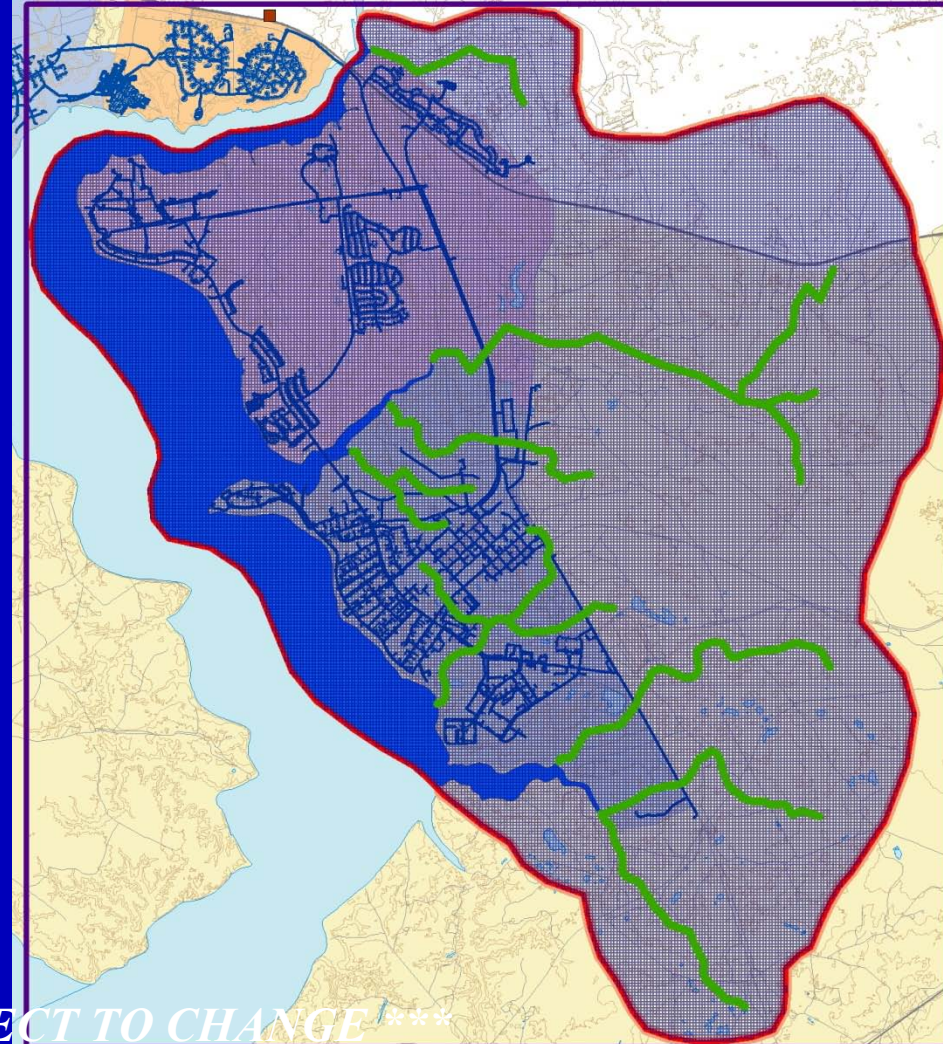
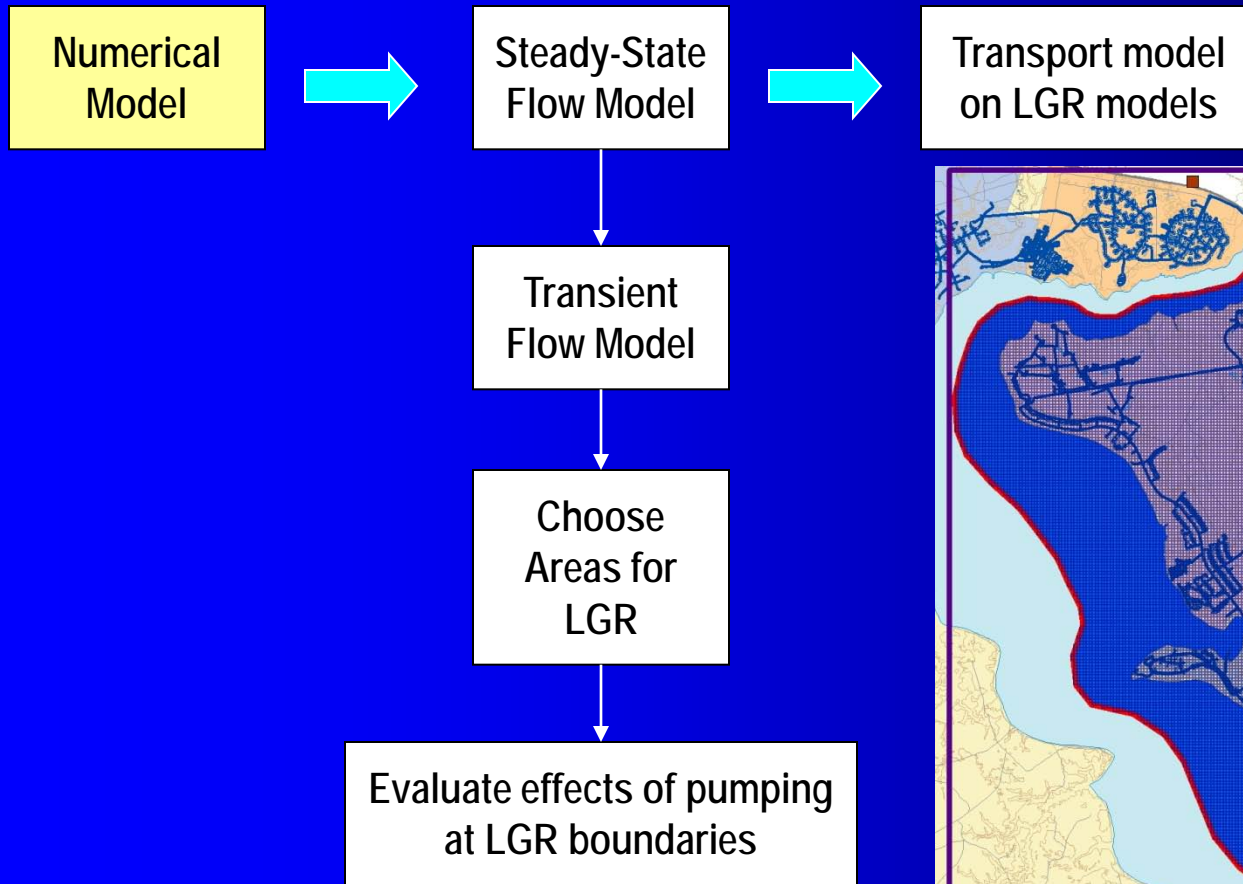
Steady-State Model Preliminary Results



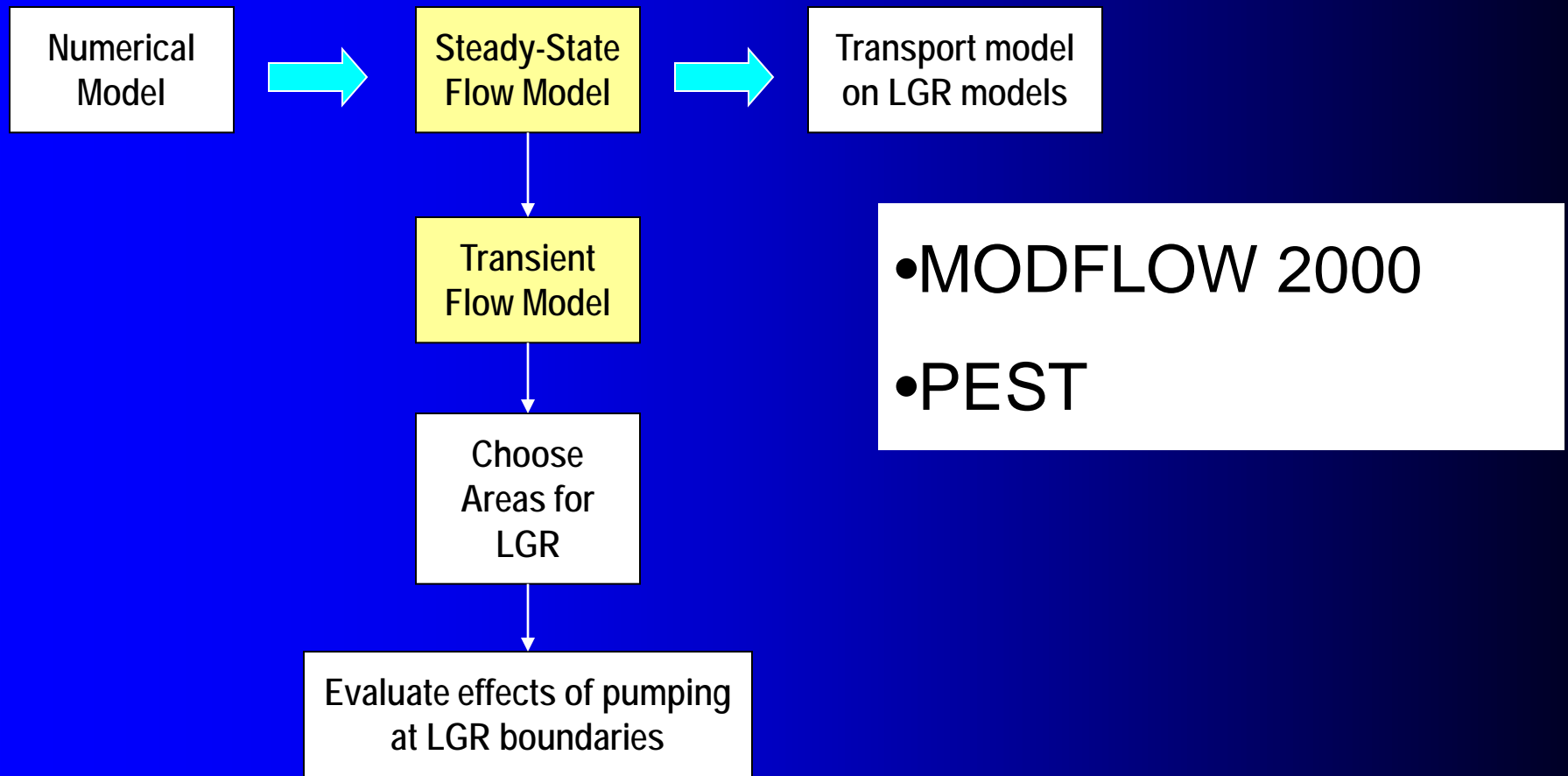
HPHB and TT side-by-side comparison

	Tarawa Terrace	HPHB
Row	200	343
Column	270	303
Layer	7	10
Cell Size	50 ft	150 ft
Available data:		
Water level		
Steady state	59 measurements	546 measurements
Transient	789 measurements	5407 measurements
Contaminant concentration	PCE 36 supply wells 25 WTP	Chlorinated Solvents 100 supply wells 31 HP WTP

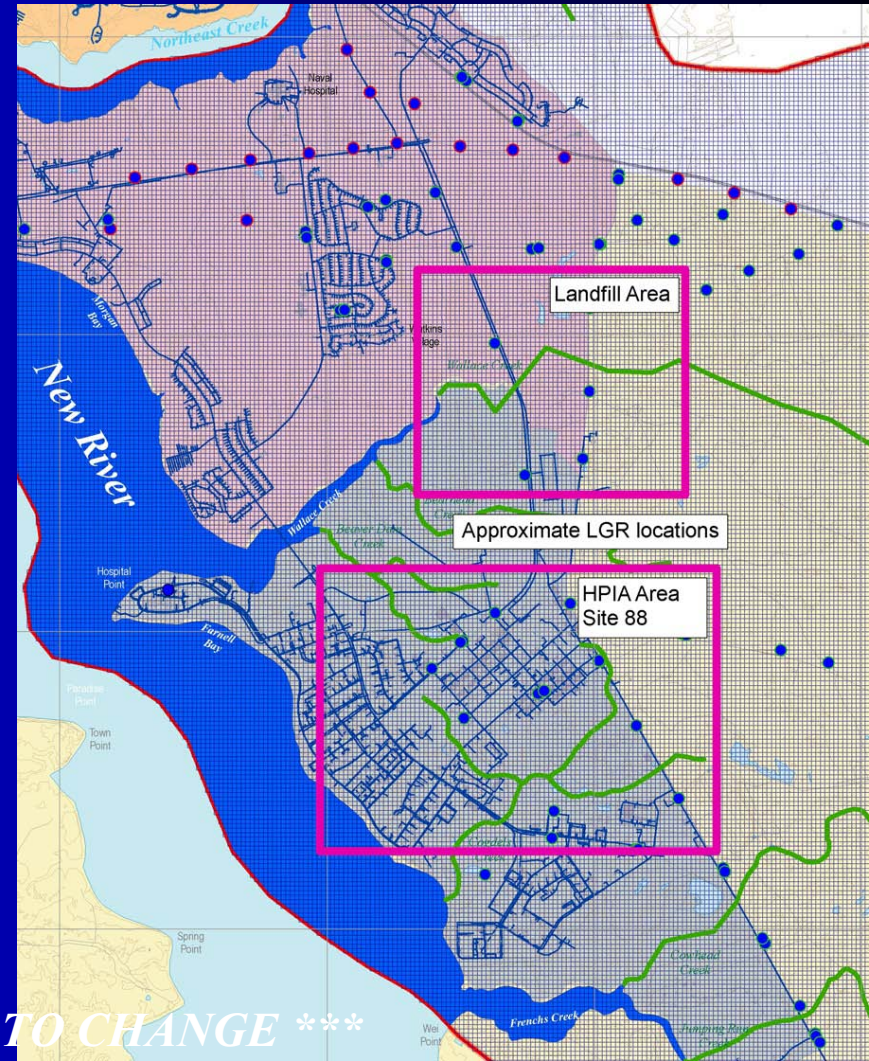
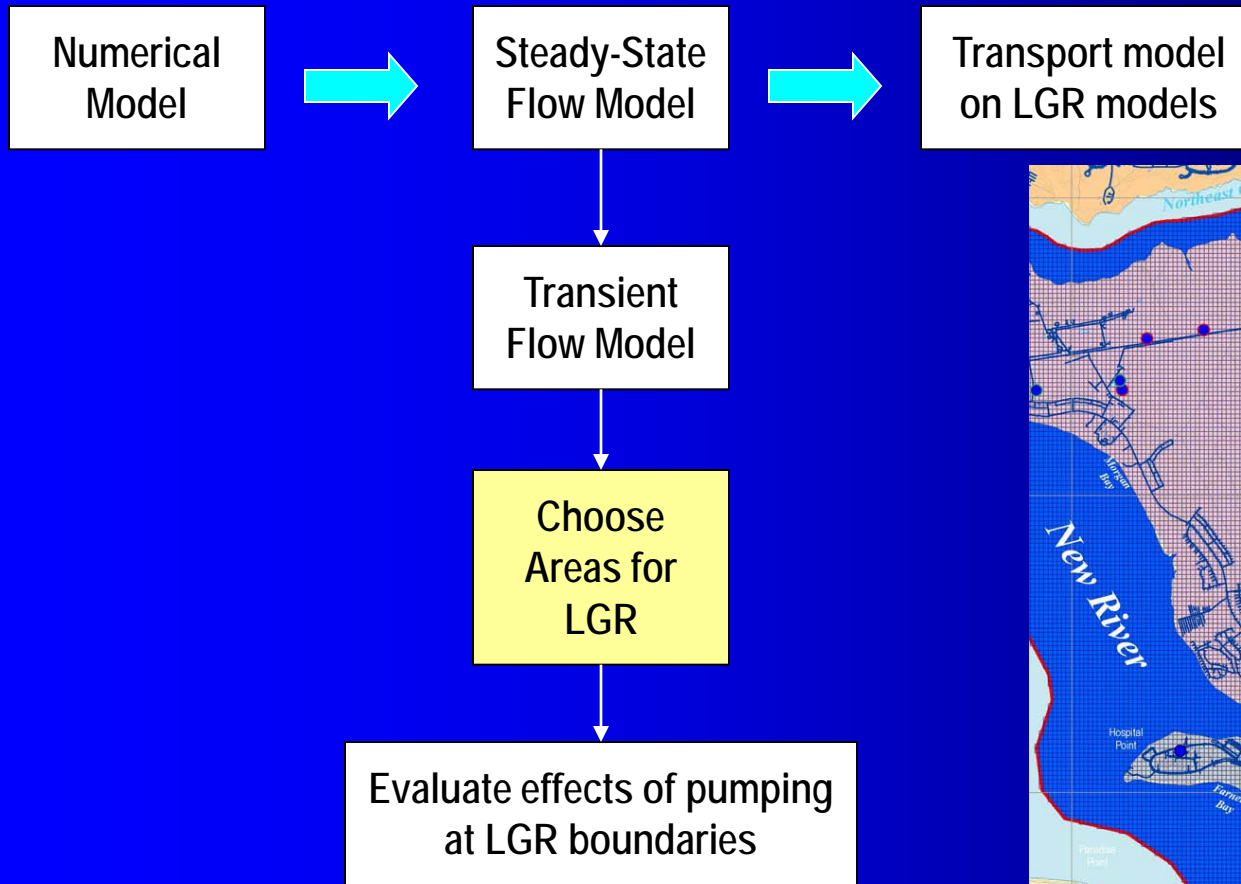
Proposed approach



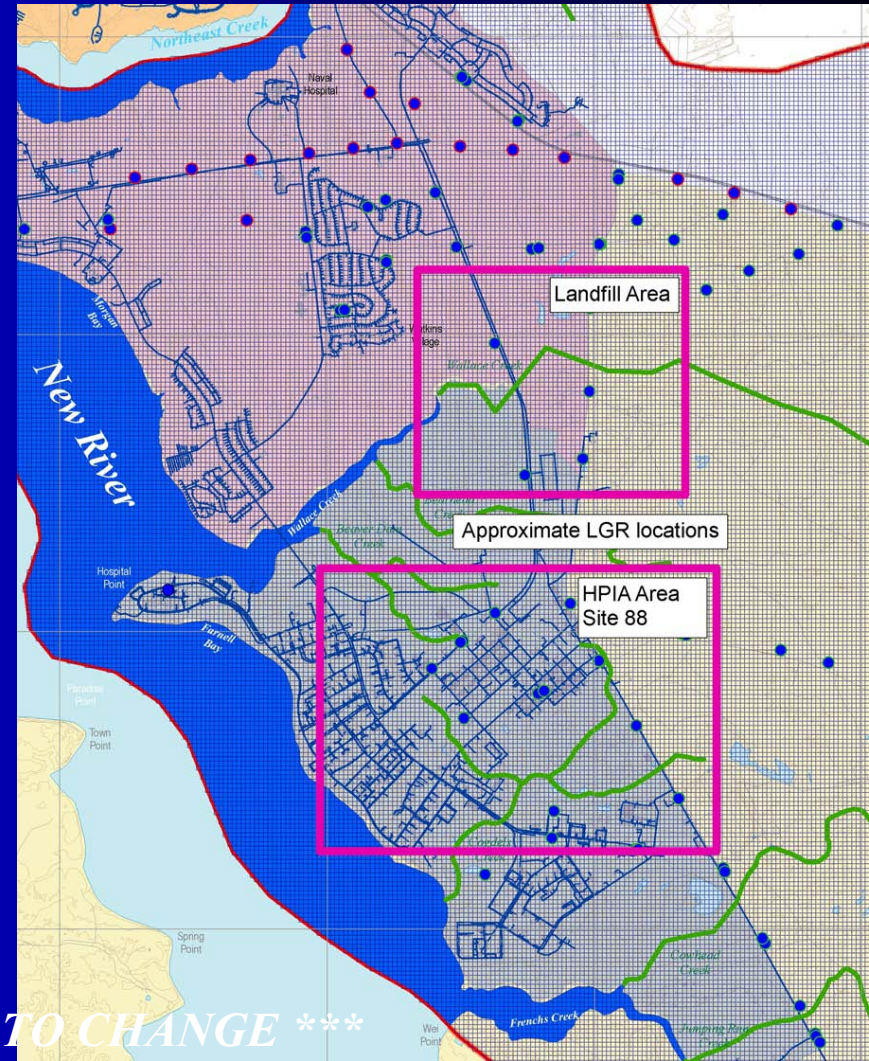
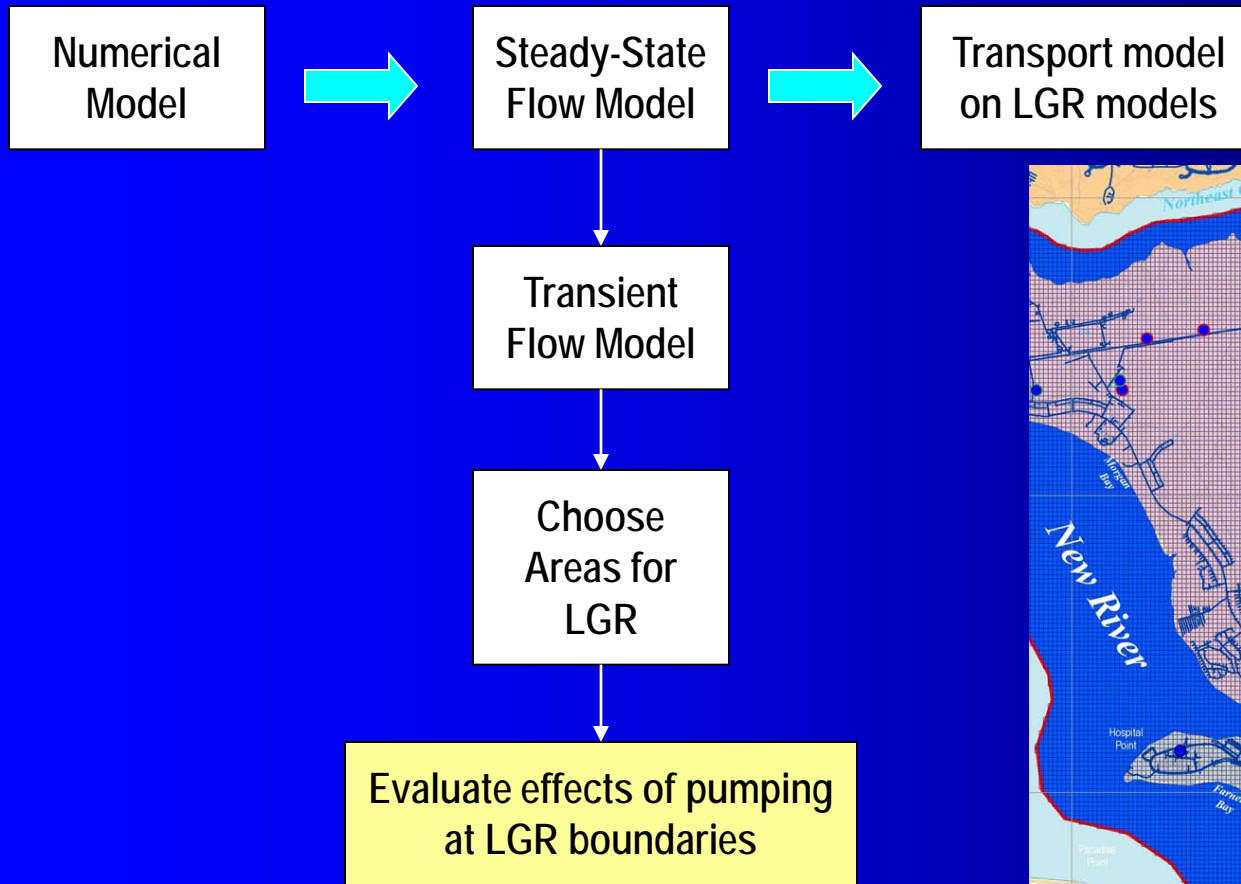
Proposed approach



Proposed approach

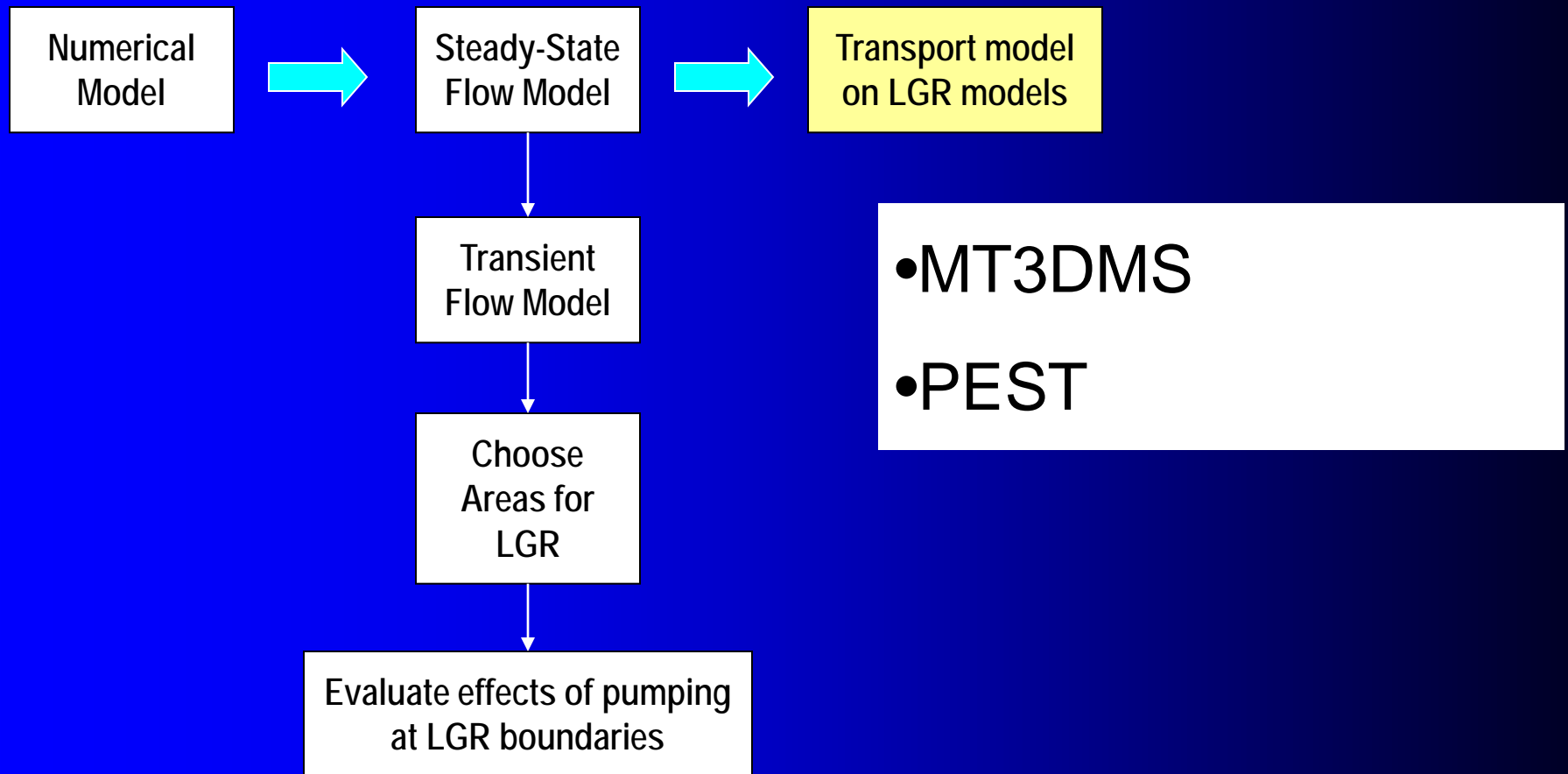


Proposed approach



*** DRAFT - SUBJECT TO CHANGE ***

Proposed approach



Questions