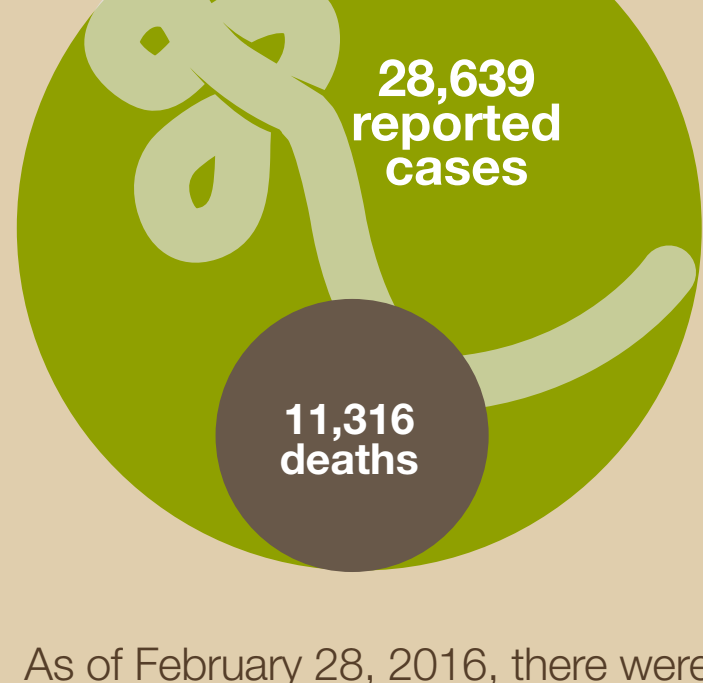


Cost of the Ebola Epidemic

2014 Ebola Epidemic



The 2014 Ebola epidemic was more than 11x larger than all previous outbreaks combined

All Other Ebola Outbreaks
1,597 deaths

As of February 28, 2016, there were 28,639 suspected, probable, and confirmed cases of Ebola and 11,316 deaths from Ebola during the 2014 epidemic in West Africa. In comparison, there were 2,427 reported cases and 1,597 deaths in all other known cases and outbreaks of Ebola combined.

The Impact

Impact of Ebola on the Economy

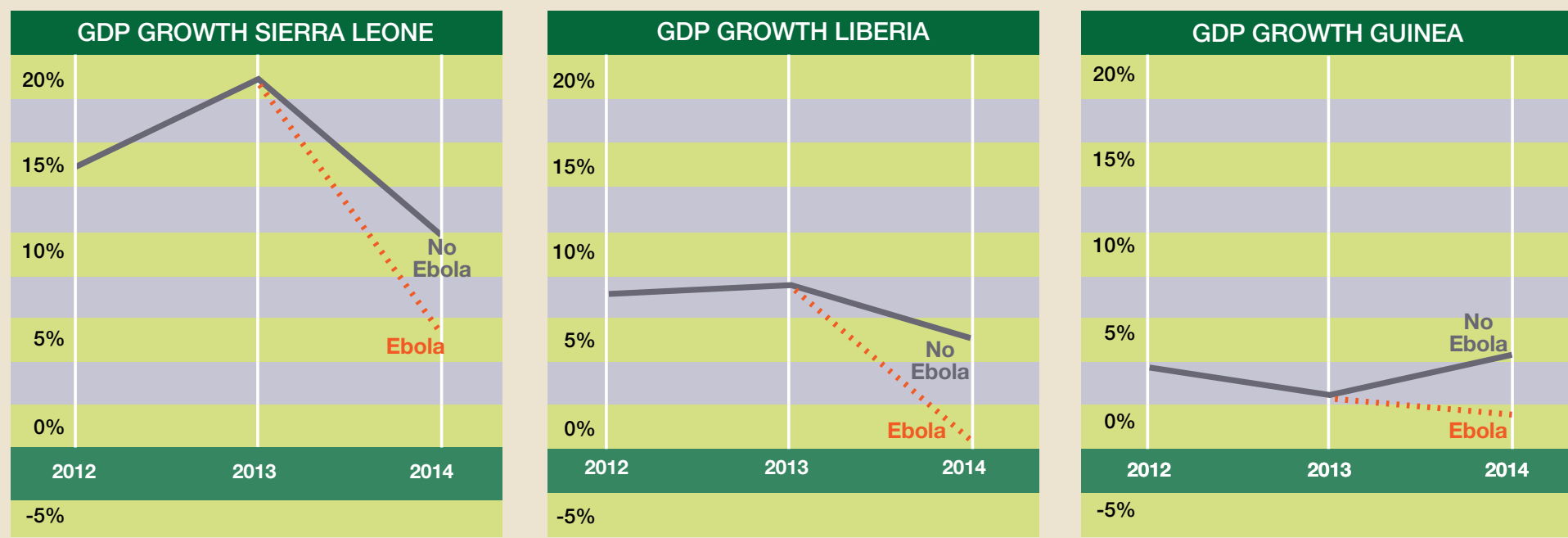
Effect on global economy

50% Sierra Leone's private sector has lost half its work force.



\$2.2 billion in GDP was lost in Guinea, Liberia, and Sierra Leone in 2015, threatening not only macroeconomic stability but also food security, human capital development, and private sector growth.

Estimated GDP growth based on World Bank 2014 projections



Impact of Ebola on the Healthcare System

Healthcare providers were at highest risk



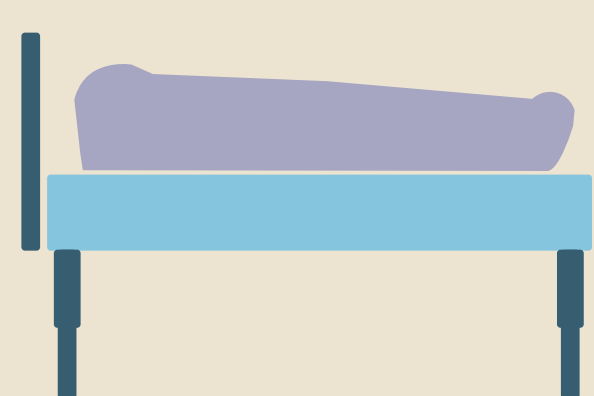
8% reduction of healthcare workforce from Ebola in Liberia

23% decrease in health services delivery in Sierra Leone



Indirect Impact of Ebola on Health Care

Hidden impact on health care



1,091 additional estimated deaths due to HIV

2,714 additional estimated deaths due to tuberculosis

6,818 additional estimated deaths due to malaria

The reduction in access to healthcare services because of Ebola caused an estimated **10,600** additional deaths due to untreated conditions in Guinea, Liberia, and Sierra Leone



Impact of Ebola on Children

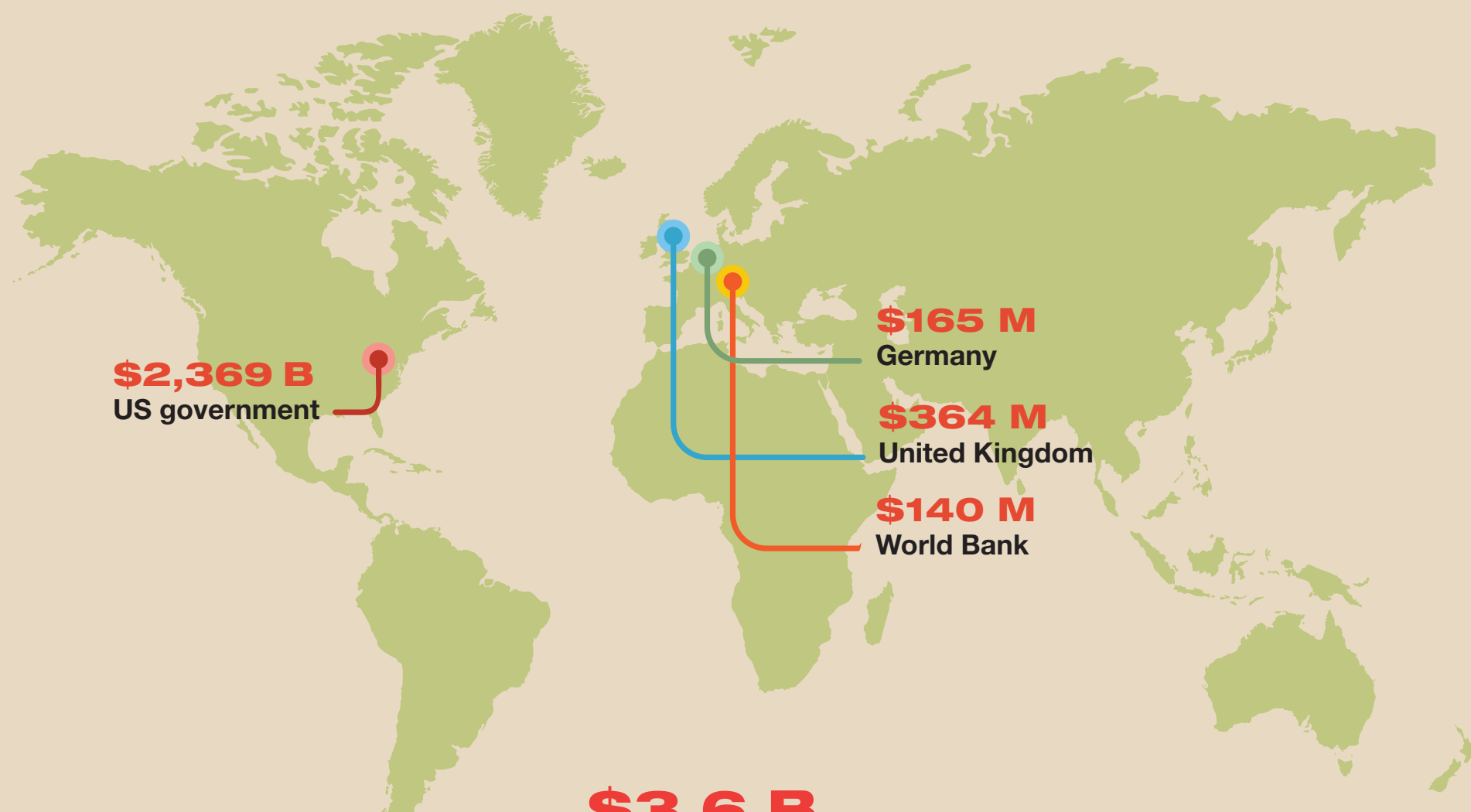
17,300 children lost one or both parents to Ebola

More than **33 weeks** of education were lost due to school closures

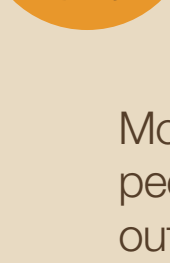
30% decline in childhood vaccination coverage

The Response

Cost of the Response



\$3.6 B Overall, more than \$3.6 billion was spent to fight the epidemic by the end of 2015

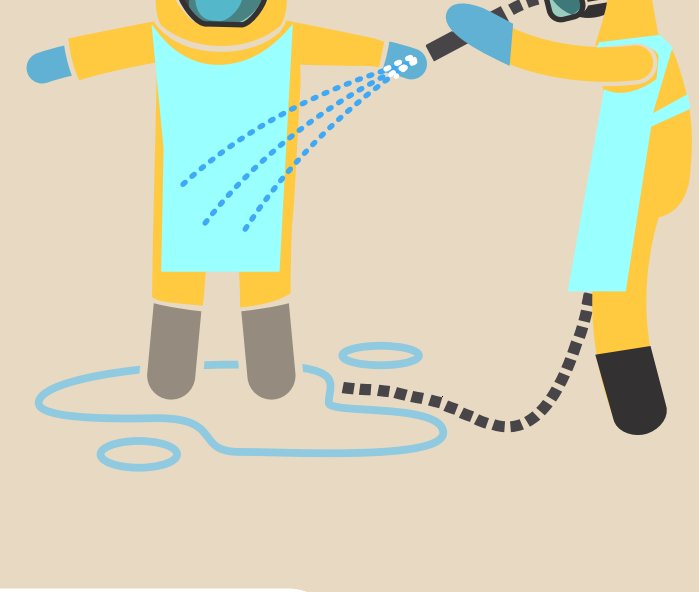


Impact of the Response on Travel

More than **339,000** people were screened flying out of Guinea, Liberia, and Sierra Leone to prevent the spread of Ebola



Impact of the Response on the Healthcare System



24,655 healthcare workers were trained in infection prevention and control in West Africa

24 labs in Guinea, Liberia, and Sierra Leone became able to test for Ebola



U.S. Department of Health and Human Services
Centers for Disease Control and Prevention

For references, see <http://www.cdc.gov/vhf/ebola/outbreaks/2014-west-africa/cost-of-ebola.html>