

**natural fluoride content of
community water supplies**

1969

STATE AND COMMUNITY	POPULATION	FLUORIDE CONTENT IN PPM
ALASKA CONT		
AUKE BAY (SCHOOL)	500	2.6
HAWAII		
NONE		

CONTENTS

WISCONSIN CONT

HALES HAPPINESS HOMESITE	420	.8
HOWARD	3,485	1.9
HOWELL AVE EST SUB.	200	1.2
KAUKAUNA	10,096	2.0
KIMBERLY	5,322	1.2
LITTLE CHUTE	5,099	1.6
LONG ISLAND HOME SUB.	50	1.0
LUXEMBURG	730	.7
LYNNDALE SUB.		.9
MARION HEIGHTS SUB.	400	.8
MARQUETTE MANOR SUB.	400	.8
MONTEREY PARK SUB.	240	.7
NEWDEAL SAN DIST #1	240	1.2
NORTHWEST HIGHLANDS SUB.	50	.7
OAKFIELD	772	.9
OCONTO	4,805	1.8
OLIVER	222	1.0
OOSTBURG	1,065	.7
PLEASANT PRAIRIE SD.	500	1.3
PREBLE	12,500	2.4
ROBT WILLIAM PARK SUB.	1,100	.7
ROWAN ESTATES SUB.	350	1.1
SECURITY ACRES SUB.	300	1.3
SOUTHEAST SD.		2.5
SUBURBAN MANOR SUB.	160	.7
SUNSET SUB.	100	.8
UNION GROVE	1,970	1.3
VAN DYKE CITY SUB.	180	1.0
ZURICK SUB.	350	.9

WYOMING

58,155

CHEYENNE	46,700	1.0		
CLEARMONT	154	.8		
FRANNIE	150	1.4		
GILLETTE	3,570			
HULETT	335	1.0		
LANCE CREEK	150	1.2	.5	
MANDERSON	170	1.0		
POWELL	4,740	.8		
SHOSHONI	766	1.0		
UPTON	1,225	1.4	.8	.4
WAMSUTTER	110	1.0		
YODER	85	1.0		

ALASKA

530

ALASKA METH U FAC HOUS	30	1.4
------------------------	----	-----

Introduction

Table 1. Public Health Service recommended fluoride concentrations . . . 1

Figure 1. Anti-caries value of suboptimal concentrations of the fluoride ion 2

Figures

2. Distribution of communities with 0.7 ppm or more natural fluoride in at least one source supplying community water systems, 1959 6

3. Distribution of communities with 0.7 ppm or more natural fluoride in community water supply systems, 1969 7

4. Number of communities with 0.7 ppm or more natural fluoride in their water systems, and their population, by State and geographic region . . . 8

5. Number of communities with natural fluoride-bearing water and population served according to range of fluoride concentration in water supplies 9

6. Percent of population consuming natural fluoride-bearing water, by concentration range 9

7. Number and size of communities with 0.7 ppm or more naturally occurring fluoride in the water supplies 10

8. Distribution of communities with natural fluoride-bearing water by population range 10

Tables

Number of communities with natural fluoride content of 0.7 ppm or more in water supply systems.

2. Population by single and multiple concentrations reported and by maximum and minimum concentrations reported, by State. 11

3. Range of fluoride concentration within water supply systems, by State 12

4. Specific fluoride concentrations 13

5. Population range of communities 14

Listing of Communities

Communities, by State, with natural fluoride concentrations of 0.7 ppm or more in community water supplies, showing population served and fluoride concentrations. 17

STATE AND COMMUNITY	POPULATION	FLUORIDE CONTENT IN PPM		
VIRGINIA CONT				
WILLOWBROOK SUB.	15	5.8		
WILROY ACRES	84	3.6		
WINDSOR (BAILEY)	300	3.5		
WINDSOR (BRACEY)	84	4.4		
WINDSOR (ELEY)	24	4.0		
WINDSOR IMPROVEMENT CORP	69	3.1		
WISTAR FARMS SUB.	270	9.2	10.1	3.1
WOODLAWN FARMS SUB.	192	.9		
WASHINGTON				
	47,727			
BENGE		.7		
CLARKSTON	6,500	.6	1.0	
COULEE CITY	650	.8		
ELECTRIC CITY	489	.6	.8	
GRANDVIEW	3,675	.4	1.0	
MABTON	969	2.0		
MOSES LAKE	11,600	.5	1.7	
MOXEE CITY	601	1.7		
OTHELLO	3,741	2.4	.5	
PASCO	16,400	2.1		
PATEROS	722	.7		
PATERSON	50	1.2		
PLYMOUTH	350	2.0		
WARDEN	1,330	.6	.9	
WISHRAM	650	.7		
WEST VIRGINIA				
	400			
LITTLETON	400	.8		
WISCONSIN				
	84,100			
ALLOUEZ	9,557	2.5		
BARRETT WOODS SUB.	170	.7		
BROSON MANOR #1 & #2 SUB	100	.9		
CAMPBELLSPORT	1,472	1.6	1.2	
CAROL BEACH ESTATES SUB.	350	1.3		
CLINTONVILLE	4,778	1.0	.8	.4
COMBINED LOCKS	1,421	1.2		
DEPERE	10,045	2.3		
ELM HEIGHTS SUB.	50	.9		
EMBARRASS	306	1.1		
FOX RIVER HEIGHTS SD.	2,657	2.0		
FOX RIVER SD.	1,370	2.5		
GREEN MEADOWS SUB.		.8		
GREENLEAF SD.	260	2.4		
GRESHAM	458	1.5		

STATE AND COMMUNITY POPULATION FLUORIDE CONTENT IN PPM

VIRGINIA CONT

STATE AND COMMUNITY	POPULATION	FLUORIDE CONTENT IN PPM
KINGSDALE (GOODEN)	18	1.5
LANCASTER COURT HOUSE	133	2.4
LEE HALL(DOW CHEM)		4.4
LIVELY	350	1.6
MADISON	301	.8
MAGRUDER HEIGHTS SUB.	153	2.8
MARL HILLS SUB.	12	.8
MECHANICSVILLE	1,200	1.0 1.0 2.6
MILTEER ACRES	45	4.3
MONTROSS	394	2.8
NANSEMOND GARDENS SUB.	120	2.2
NELSON PARK SUB.	369	1.6
NEW MARKET	783	.9
OAKRIDGE SUB.	201	5.1
ONANCOCK	1,759	.8
PAGAN PINES SUB.	429	3.6
PARKWAY ESTATES SUB.	15	1.8
PEARSBURG	2,268	.7
PIEDMONT SANATORIUM		1.1
PIERCE'S PARK	121	3.8
PORT ROYAL	128	1.0
POTOMAC SHORES		.6 1.5 1.8
QUEENS LAKE SUB.		2.3
RED POINT HEIGHTS SUB.	240	3.6
REEDVILLE	600	2.1
ROBINWOOD SUB.	335	2.0
RUSHMERE	125	2.3
SALUDA	300	2.0
SANDY BOTTOM	135	5.4
SEDLEY		.7
SEDLEY SCHOOL		1.3
SHAWSVILLE	300	1.6
SLEEPY LAKE SUB.	24	4.7
SMITHFIELD	1,800	3.1
ST. FRANCIS DE SALES SCH	125	1.4
TANGIER ISLAND	876	1.7
TAPPAHANNOCK	1,086	1.5
TAUXEMOND SUB.	11,440	.8
UNION BAG MFRG. CORP,	1,500	5.2
URBANNA	512	2.2
VIENNA	7,200	.7
VISTA ACRES SUB.	540	.8
WACHAPREAQUE		1.7
WARSAW	548	2.3
WEST IRVINGTON		3.4
WEST POINT PART	1,687	2.0
WHALEYVILLE	402	3.2 4.0
WHITESTONE	395	2.8

INTRODUCTION

A survey to determine the number and location of community water supplies containing dentally significant concentrations of naturally occurring fluorides was made in early 1969 by the State Dental Directors at the request of the U.S. Public Health Service. This publication presents the results of this survey and serves to update a similar document published in 1959.¹ The 1959 publication included all communities reporting at least one water source with a natural fluoride concentration of 0.7 parts per million (ppm)² or higher. This publication differs in that it lists all communities whose water supplies were reported to have a natural fluoride concentration of 0.7 ppm or more regardless of the concentration of the various sources of water. This survey attempted to identify public water systems in the United States which naturally contain the minimum fluoride concentration recommended by the Public Health Service as optimal for protection against dental caries.

The optimum concentration of fluorides in community water supplies depends upon the annual average of maximum daily air temperatures in the individual community. According to Public Health Service Drinking Water Standards, 1962, the recommended concentrations are shown in Table 1.

The following table shows that the optimal fluoride concentration is not the same for every community, although 1.0 part per million is optimal for most communities in the United States. In this publication, water supplies with less than 0.7 ppm are not listed

TABLE 1.

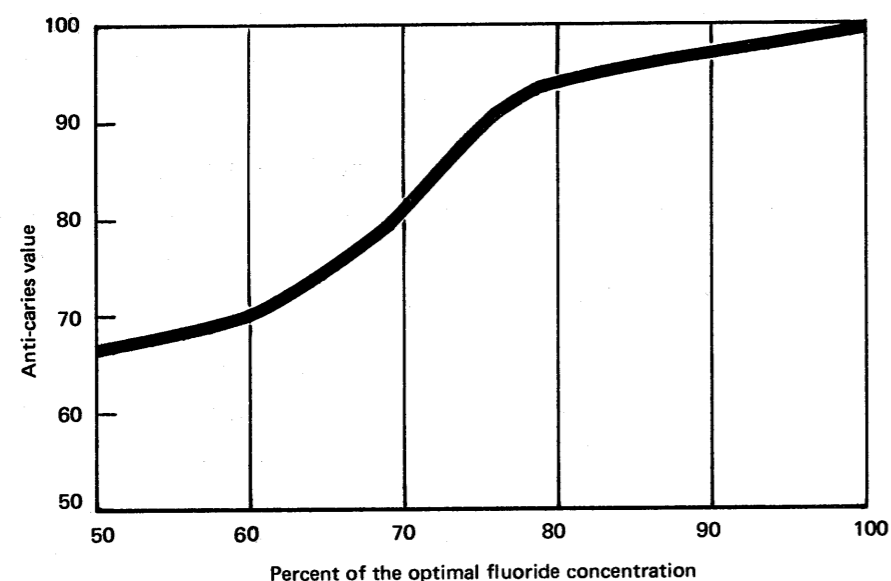
Annual average of maximum daily air temperatures *	Recommended control limits— Fluoride concentrations in mg/l		
	Lower	Optimum	Upper
50.0-53.7	0.9	1.2	1.7
53.8-58.3	0.8	1.1	1.5
58.4-63.8	0.8	1.0	1.3
63.9-70.6	0.7	0.9	1.2
70.7-79.2	0.7	0.8	1.0
79.3-90.5	0.6	0.7	0.8

* Based on temperature data obtained for a minimum of five years.

- 1 Natural Fluoride Content of Communal Water Supplies in the United States, U.S. Department of Health, Education, and Welfare, Public Health Service, Publication No. 655, 1959.
- 2 Parts of fluoride per million parts of water, by weight.

because such supplies have less than the lowest concentration recommended as optimum by the Public Health Service for the warmest climate. As can be seen in Table 1, 0.7 ppm of fluoride is recommended for optimal protection against caries in only the warmest climates in the country. Figure 1 shows how the protection against caries varies relative to the optimal concentration of the fluoride ion in the water supply. The data used in this Figure were calculated using 1.0 part per million fluoride as the optimal concentration. It demonstrates the degree of protection that sub-optimal concentrations of fluoride can provide.

Figure 1.—ANTI-CARIES VALUE OF SUBOPTIMAL CONCENTRATIONS OF FLUORIDE ION



Based on Dean, Arnold, and Elvove: Domestic Water and Dental Caries, V. Additional Studies of the Relation of Fluoride Domestic Waters to Dental Caries Experience in 4,425 White Children Aged 12 to 14 Years, of 13 Cities in four States.

The listing beginning on page 17 shows the population and fluoride concentration for each community, by State, with 0.7 ppm or more natural fluoride in the community water supply. The States were asked to report the most recent population of communities. In most cases, the population statistics from the 1960 Census was the latest available, and for this reason the total number of people consuming natural fluoride-bearing water at present is under-estimated.

STATE AND COMMUNITY	POPULATION	FLUORIDE CONTENT IN PPM	
UTAH CONT			
WHEELON	20	1.4	
VERMONT			
NONE			
VIRGINIA			
	57,577		
ALBERTA	430	.7	
BATTLEFIELD FARMS SUB.	200	.8	
BECK'S SUB.	105	6.2	
BELLWOOD	450	.9	
BENN'S CHURCH HOME SUB.	66	2.2	
BENNETT'S HARBOR SUB.	48	4.3	
BERKLEY BEACH	51	2.0	
BIRDTOWN	42	6.1	
CALLAO	400	.8	
CANTERBURY HILLS SUB.	135	.8	
CARVER GARDENS SUBD.	192	2.7	
CHESTERFIELD COURT HOUSE	135	.9	
COLONIAL BEACH		1.4	
CONVICT CAMP #3	90	3.4	
COURTLAND	855	2.5	
CYPRESS COVE GARDENS SUB	42	5.0	4.2
CYPRUS MANOR SUB.	72	3.0	
DAHLGREN	950	.9	
DUBLIN	1,427	.7	
EAST IRVINGTON	428	2.8	
ECLIPSE	39	5.0	
FIELDALE-WHITLEY W W		.9	
FRANKLIN	7,005	5.5	
FT. EUSTIS		3.7	
GLOUCESTER SD.		2.2	
GREEN MEADOW POINT SUB.		4.2	
HALLOWING PT. RIVER SUB.	105	1.4	
HAMILTON	403	.9	
HEATHSVILLE	275	1.2	
HECKLER VILLAGE	450	.7	
HEDGEROW	60	1.6	
HIGHVIEW ACRES SUB.		1.2	
HOLLAND	338	6.4	3.6 5.6
IBSON PIERCE SUB.	39	5.1	
INDIGO PARK SUB.	60	1.7	
IVOR	398	.8	
JAMES TERRACE SUB.	645	2.8	
KEARSAGE SUB.	35	1.2	
KILBY SHORES SUB.		3.5	
KILMARNOCK	1,600	2.5	

STATE AND COMMUNITY POPULATION FLUORIDE CONTENT IN PPM

TEXAS CONT

VIDOR	7,938	.8
WALBERG	250	4.0
WALSTON SPRINGS	600	.8
WAUTAUGA	1,012	1.0
WEBSTER	529	.8
WEINERT	251	1.0
WEIR	100	3.5
WELCH	215	4.4
WELLMAN	120	5.6
WELLS	544	.7
WESLACO	16,550	.7
WEST	2,532	1.2
WEST COLUMBIA	3,010	.9
WEST LEONARD	350	1.6
WEST UNIVERSITY PLACE	14,708	.8
WESTMINSTER	194	2.7
WESTON	316	2.7
WESTPHALIA	324	2.6
WESTWAY	450	7.6
WHITE OAK	2,245	.7
WHITE SETTLEMENT	11,900	1.0
WHITEFACE	535	3.5
WHITESBORO	2,985	.8
WHITESHED	150	1.8
WHITEWRIGHT	1,315	1.8
WHITHARRAL	180	4.3
WHITNEY	1,050	4.6
WICKETT	100	2.2
WILMER	2,470	3.1
WILSON	403	4.8
WINDOM	218	1.8
WINK	1,869	1.8
WOLFORTH	850	5.8
WOODLAKE	100	.7
WOODSBORO	2,181	.7
ZAPATA	2,191	1.0
ZAVALA	550	1.1

UTAH

2,874

BONANZA	25	.7
CANNONVILLE	153	.8
LUND	75	1.0
MILFORD	1,471	1.0
MINERSVILLE	580	.8
MODONA	100	.8
SANTA CLARA	291	1.3
SNOWVILLE	159	.9

The fluoride concentrations appear in the listing as single numbers, multiple numbers and in some cases no numbers. Where a single concentration is listed, the actual fluoride concentration of the water within the distribution system, or a reasonable estimate of the concentration, was reported. This applies whether the water supplied to the distribution system comes from one or several sources. Summary data on communities which have a single number in the listing is given in Table 2, under the column heading "Single Concentration Reported."

The listing of two or more fluoride concentrations resulted from two different kinds of reporting. In one instance, the States of Florida, California, and New York reported maximum and minimum concentrations of multiple chemical analyses of a single source or the maximum and minimum concentrations of most sources which supply the water distribution system. New York reported not only maximum and minimum concentrations, but also supplied an average which is given in the listing. Summary data for these communities are given in Table 2 under the column heading "Communities with Maximum and Minimum Concentrations Reported."

On the other hand, most communities in States other than California, Florida, and New York for which two or more concentrations are listed do not have a uniform fluoride ion distribution within the water system. Thus, the fluoride concentration of each water source is given. Summary data for these communities are given under the column heading "Multiple Concentrations Reported."

In a few instances in the listing, no fluoride concentration is given. In these cases, it was reported that the natural fluoride content within the water distribution system was 0.7 ppm or more, but the exact concentration was not given.

Following the names of some communities in the listing, the words "Blending," "Main Opt" (Maintains the optimal fluoride concentration), and "Defluoridating" appear. Communities which carry such notations purposefully maintain the fluoride level of their natural fluoride-bearing water at the optimal concentration.

From this study, it is estimated that there are now 8,106,435 people in 2,630 communities in forty-four States consuming water with at least 0.7 ppm naturally occurring fluorides (Table 2). This represents an increase of 1,154,033 people and 727 communities reported to be using water supplies with natural fluoride since the last survey was reported in 1959. In other words, there are 17 percent

more people and 38 percent more communities using water supplies with at least 0.7 ppm naturally occurring fluoride than in 1959. A comparison of the 1959 and 1969 maps (Figures 2 & 3) graphically illustrates this change. This change suggests a significant increase. However, part of this increase may be attributed to population growth and the remainder is probably largely the result of more accurate and complete information supplied by the States rather than a trend towards increased use of natural sources for fluoridation. In fact, the trend appears to be away from natural sources and towards controlled fluoridation. For instance, two large cities in Texas—Dallas and Fort Worth—with almost a million and a half people, changed from natural sources of fluoride-bearing water to controlled fluoridation.

During this survey it was learned that in Houston, Texas, only 290,000 people were consuming water with 0.7 ppm or more fluoride ion instead of 900,000 as had been previously reported.

Because of the criteria used in this survey, the switch by some communities from natural sources to controlled fluoridation and the discovery that in some cases the fluoride ion was not as widely distributed as had been previously indicated, the reported increase in the number of people consuming dentally significant concentrations of fluorides was not as great as anticipated.³

Most of the communities reported to be using natural fluoride-bearing water—62 percent—are located in the following States: Arizona, Colorado, Illinois, Iowa, New Mexico, Ohio, Oklahoma, South Dakota and Texas. There were no communities with at least 0.7 ppm naturally occurring fluoride reported for Delaware, Hawaii, Massachusetts, Pennsylvania, Tennessee, and Vermont (Table 2 and Figure 3).

The survey data indicate that 1,517 communities with 5,782,628 people (71 percent of the total) drink water that has an average natural fluoride content within the range 0.7 to 1.2 ppm—the range recommended by the Public Health Service (Table 3, Figures 4 & 6). It was reported that there are now 1,366,533 people (17 percent of the total) in 589 communities drinking water with an average

³ Projections based upon previous surveys estimated that 10 million people are now consuming water with a naturally occurring fluoride concentration of 0.7 ppm or higher.

STATE AND COMMUNITY	POPULATION	FLUORIDE CONTENT IN PPM
TEXAS CONT		
SINTON	6,150	1.8
SLATON	6,750	1.1
SMITHFIELD	1,000	.7
SNOOK	140	.7
SNYDER	12,500	.9
SOLMS	50	1.1
SOMERVILLE	1,177	.7
SPADE	174	2.6
SPEARMAN	4,510	1.6
SPRING VALLEY VILLAGE	3,204	.8
SPRINGLAKE	245	1.9
SPRINGTOWN	850	1.2
SPUR	2,300	2.6
STANTON	2,690	2.0
STERLING CITY	875	1.0
STINNETT	2,695	1.8
STRATFORD	2,050	1.3
SUGARLAND	3,951	.7
SUNDOWN	1,250	4.1
SUNRAY	2,190	1.5
TAHOKA	3,012	4.5
TATUM	542	1.0
TAYLOR	9,500	3.9
TAYLORS VALLEY	200	2.6
TELICO	80	2.5
TENAHA	1,097	1.6
TEXAS CITY	37,200	1.6
TEXLINE	430	1.1
THALIA	180	.7
TIMPSON	1,150	.9
TIVOLI	500	3.0
TOM BEAM	403	2.1
TORNILLO	250	.9
TOURS	105	1.8
TOYAH	280	1.6
TRENTON	712	1.2
TROUP	1,667	1.1
TROY	275	2.0
TULIA	5,604	2.6
TURKEY	863	.7
TURNERVILLE	220	1.1
TUSCOLA	423	2.4
VALLEY MILLS	1,061	1.0
VAN ALSTYNE	1,608	1.1
VAN HORN	2,510	3.1
VAN VLECK	195	.8
VEGA	858	1.6
VERNON	13,010	.7

TEXAS CONT

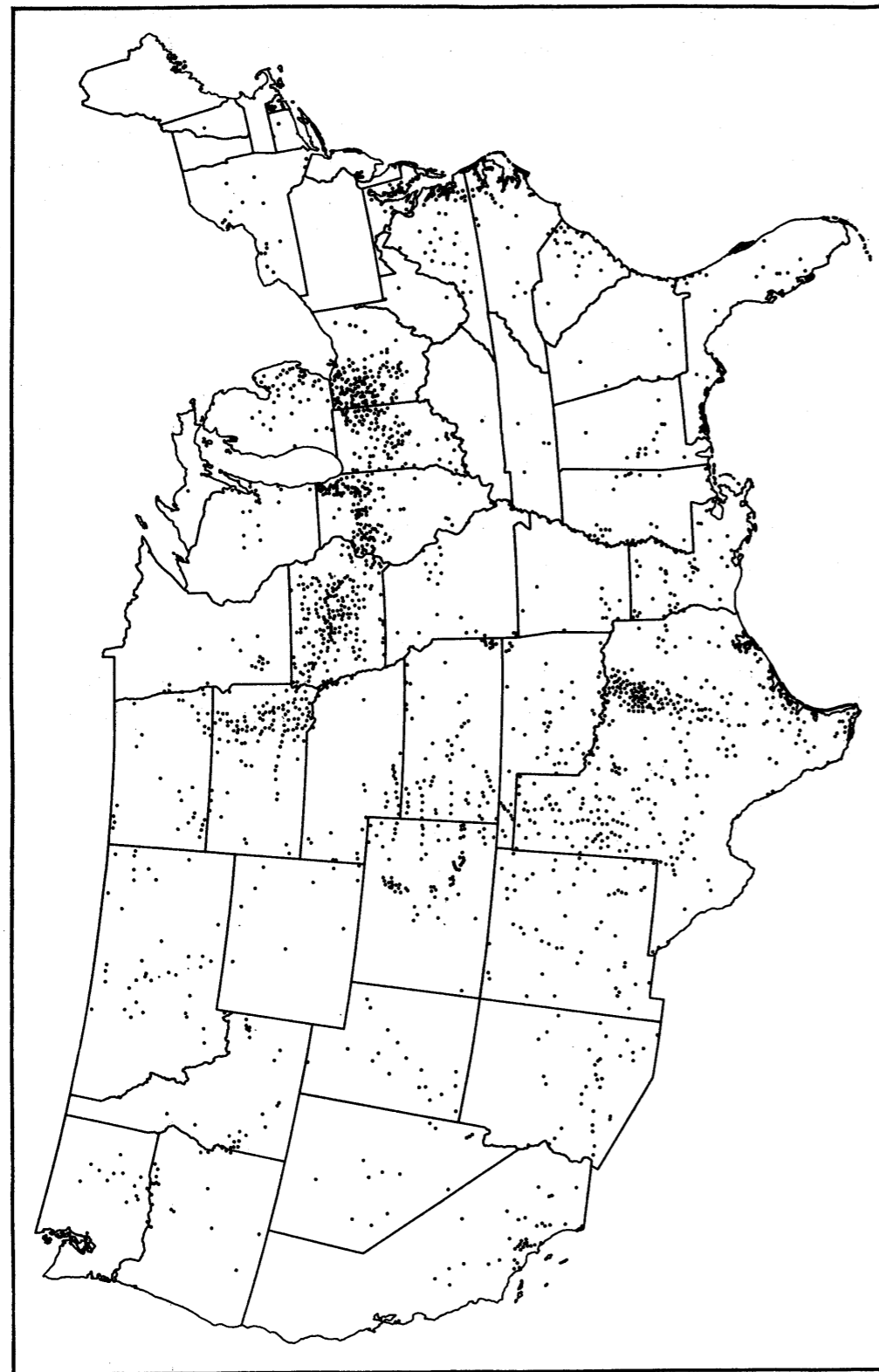
STATE AND COMMUNITY	POPULATION	FLUORIDE CONTENT IN PPM
RALLS	2,300	2.7
RANDOLPH	125	1.8
RANGER	3,363	.9
RANKIN	1,200	2.0
RAYMONDVILLE	10,200	.9
RED OAK	415	2.4
REFUGIO	5,000	1.4
RENNER	350	1.8
RENO	110	4.1
RICHLAND	287	1.0
RICHLAND HILLS	9,000	1.5
RICHLAND SPRINGS	350	.8
RIESEL	625	2.3
RIVERSIDE	450	1.4
RIVIERA	550	.8
ROANE	120	1.2
ROARING SPRINGS	420	.9
ROBINSON	3,100	1.2
ROCHELLE	100	.9
ROCKPORT	3,500	1.5
ROGERS	1,000	2.4
ROPESVILLE	950	5.1
ROSCOE	1,490	2.2
ROSS	220	.8
ROTAN	2,950	1.0
ROWENA	436	1.8
ROWLETT	1,315	2.1
ROXTON	620	.8
RUNGE	1,055	.8
SAMNORWOOD	95	.8
SAN BENITO	16,650	1.0
SAN DIEGO	4,795	1.8
SAN JUAN	4,550	1.2
SANTA ROSA	1,572	1.2
SARDIS	12	1.6
SAVOY	493	1.3
SEABROOK	3,100	.9
SEADRIFT	1,182	1.2
SEAGRAVES	2,250	5.6
SEMINOLE	6,252	4.3
SEYMOUR	4,010	1.3
SHALLOWATER	1,100	4.8
SHELBYVILLE	200	.9
SHERMAN	26,100	.9
SHINER	1,770	.9
SHOREACRES	880	1.2
SIERRA BLANCA	850	4.1
SILVERTON	1,098	3.5

natural fluoride content between 1.3 and 2.0 ppm, 712,253 people (nine percent of the total) in 386 communities using water with 2.1 to 3.9 ppm fluoride, and 245,021 people (three percent of the total) in 138 communities drinking water which has more than 4.0 parts per million fluoride. While the people consuming water with more than the optimal concentration of fluoride from birth may have fewer cavities, they stand the risk of developing mottled teeth. Those people who consume the optimal concentration of fluorides from birth will receive the maximum protection against caries and will be free from unesthetic mottling.

As may be seen from Table 5 and Figures 7 and 8, most of the communities with natural fluoride sources have small populations. Thirty-two percent of these communities have between 100 and 499 people. Only eight communities, or 0.31 percent of the communities listed herein, have over 100,000 people (Table 5 and Figures 7 and 8). However, these eight communities contain 1,320,104 people, or 16 percent of the total number of people reported to be drinking water with a natural fluoride content of 0.7 ppm or greater.

This compilation of the latest available information on the use of natural fluoride bearing waters is intended to assist those interested in keeping abreast of the availability of fluoride, regardless of its source, for safe and effective prevention of tooth decay.

Figure 2.—Distribution of Communities With 0.7 PPM or More Natural Fluoride
in at Least One Source Supplying Community Water Systems, 1959



STATE AND COMMUNITY	POPULATION	FLUORIDE CONTENT IN PPM
TEXAS CONT		
NORDHEIM	407	.8
NORTH RICHLAND HILLS	12,250	.8
NORTH WACO	10,000	1.0
O'DONNELL	1,750	4.2
ODESSA	88,900	1.5
OENAVILLE	100	2.4
OGLESBY	414	1.8
OLNEY	4,300	.9
OLTON	2,370	2.8
ORANGE GROVE	1,109	.7
OVALO	300	1.8
OZONA	3,500	1.2
PADUCAH	2,492	.7
PALACIOS	3,676	1.0
PALMER	613	4.0
PAMPA	26,000	1.1
PANHANDLE	2,500	.9
PANTEGO	238	1.7
PARADISE	250	1.0
PATTONVILLE	175	4.6
PEARLAND	2,600	.7
PECOS	13,500	1.5
PENELOPE	226	1.1
PERRY	238	3.7
PERRYTON	9,000	2.7
PETERSBURG	1,500	3.0
PETTY	100	2.3
PFLUGERVILLE	380	2.0
PHARR	14,806	1.0
PHELPS	45	1.1
PHILLIPS	3,605	.9
PILOT POINT	1,325	.8
PINEY POINT VILLAGE	2,080	.8
PLAINS	1,325	5.6
PLAINVIEW	23,300	3.5
POINT COMFORT	1,453	1.1
PORT ISABEL	4,000	1.2
PORT LAVACA	10,500	1.3
PORT MANSFIELD	525	3.9
POST	4,430	1.6
PRAIRIE HILL	200	2.8
PREMONT	3,049	.7
PRESIDIO	1,072	.9
PROSPER	375	4.3
PURDON	125	4.0
PYOTE	300	3.0
QUANAH	4,610	.8
QUITAQUE	1,168	3.4

STATE AND COMMUNITY POPULATION FLUORIDE CONTENT IN PPM

TEXAS CONT

STATE AND COMMUNITY	POPULATION	FLUORIDE CONTENT IN PPM
LOS FRESNOS	1,500	1.0
LOTT	780	3.3
LOVING	350	.9
LUBBOCK	161,000	1.1
LYFORD	1,554	.9
LYONS	450	.7
LYTLE	850	3.2
MAGNOLIA	280	.8
MALONE	255	1.2
MANOR	766	4.5
MARFA	3,400	3.3
MARION	557	1.2
MARQUEZ	194	.7
MART	2,196	2.1
MASON	1,750	.8
MATADOR	1,384	1.1
MATHIS	6,075	.9
MATOGORDA	700	1.6
MAYPEARL	350	2.2
MCALLEN	38,600	.7
MCCAMEY	3,350	1.7
MCGREGOR	4,825	1.5
MEADOW	484	5.0
MELISSA	375	2.2
MELVIN	401	.9
MERCEDES	11,143	1.9
MERTENS	104	3.2
MIDLAND	67,717	5.1
MIDLOTHIAN	1,800	1.5
MIDWAY	400	2.1
MILDRED	75	.8
MILES	650	2.2
MILFORD	590	3.2
MIRANDO CITY	720	.9
MISSION	14,281	1.0
MONAHANS	10,500	1.6
MONT BELVIEU	500	1.2
MONTE ALTO	650	.7
MOODY	1,410	1.4
MORSE	200	1.5
MORTON	3,010	4.7
MOUNT CALM	413	3.1
MULESHOE	4,150	2.5
MUNDAY	1,978	4.5
NAVARRO	75	.8
NAVASOTA	4,950	.8
NEW DEAL	500	2.6
NEW HOME	200	6.0

Figure 3.—Distribution of Communities With 0.7 PPM or More Natural Fluoride in Community Water Supply Systems, 1969

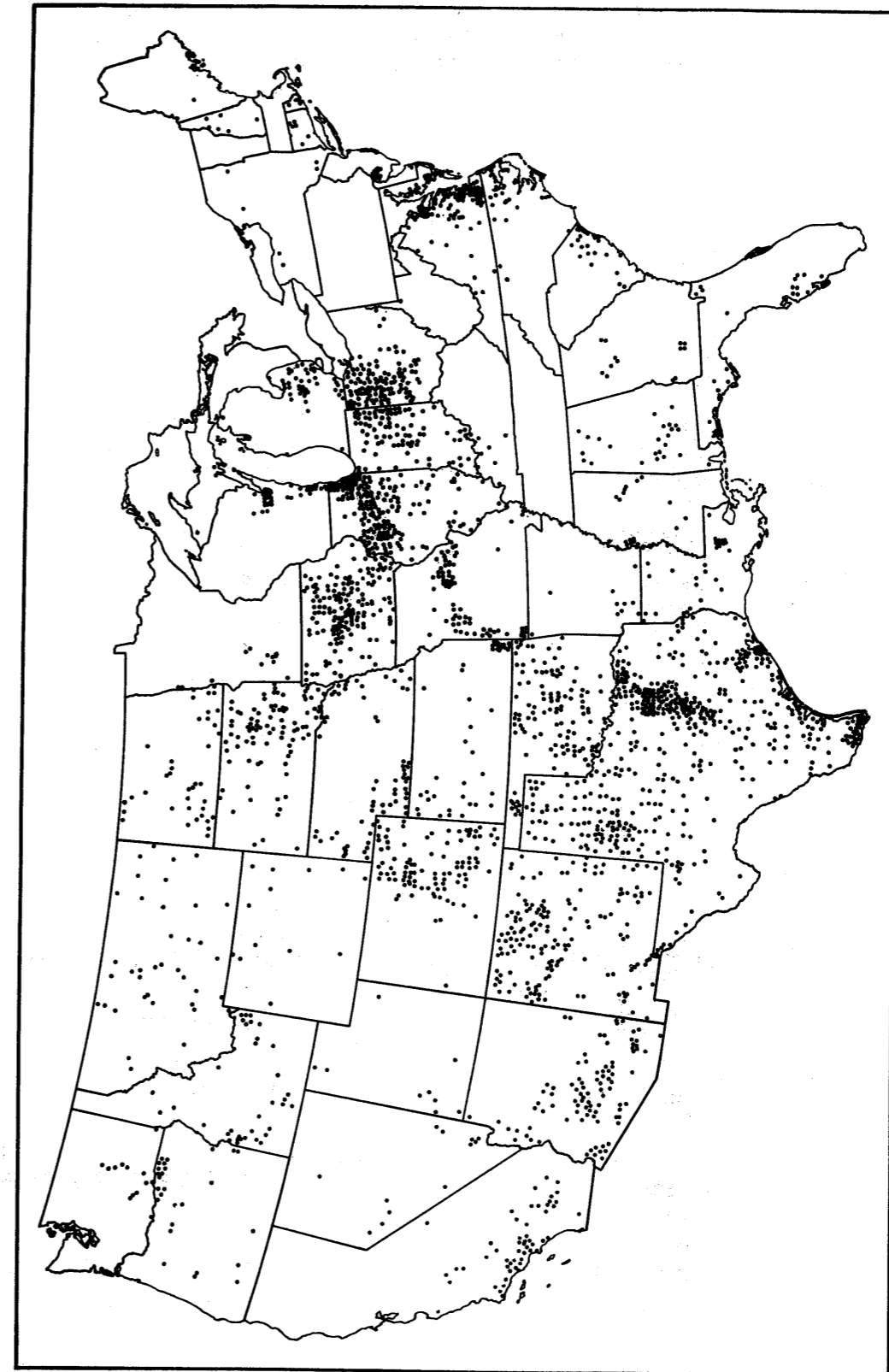
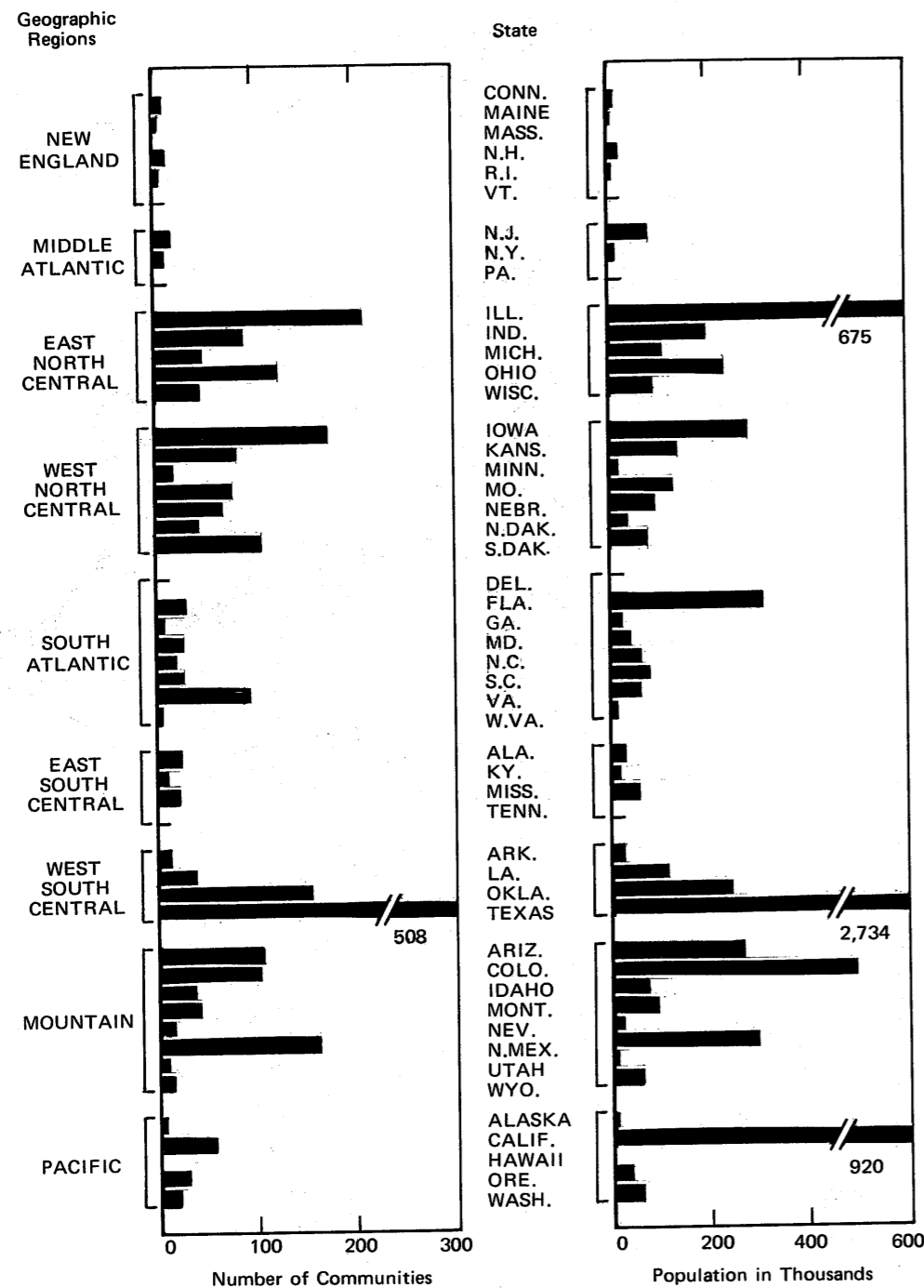


Figure 4.—NUMBER OF COMMUNITIES WITH 0.7 PPM OR MORE NATURAL FLUORIDE IN THEIR WATER SYSTEMS, AND THEIR POPULATION, BY STATE AND GEOGRAPHIC REGION



STATE AND COMMUNITY POPULATION FLUORIDE CONTENT IN PPM

TEXAS CONT

STATE AND COMMUNITY	POPULATION	FLUORIDE CONTENT IN PPM
KENEDY	4,235	1.0
KENNEDALE	1,800	.8
KERMIT	10,300	1.1
KERRVILLE	11,300	1.4
KINGSVILLE	26,900	.7
KLEBERG	5,230	3.6
KNIPPA	360	3.7
KNOX CITY	1,800	1.1
KRESS	438	1.7
KYLE	1,460	3.7
LA FERIA	3,970	1.7
LA GRANGE	3,600	1.1
LA MARQUE	15,486	1.3
LA PORTE	5,200	1.0
LA VILLA	1,261	.9
LACY LAKEVIEW	2,950	1.6
LADONIA	790	3.5
LAGUNA HEIGHTS	840	1.2
LAGUNA VISTA	260	1.2
LAKE BARBARA	500	.7
LAKE DALLAS	450	1.5
LAKE VIEW	419	.7
LAKE WORTH VILLAGE	3,833	2.8
LAKESIDE VILLAGE	200	.8
LAMESA	14,500	4.8
LAMPASAS	5,670	1.6
LANCASTER	9,300	2.3
LANNIUS	70	1.7
LAREDO	64,600	1.0
LAWN	310	1.5
LEAGUE CITY	2,622	.8
LEAKEY	671	3.5
LEONARD	1,117	1.5
LEROY	230	1.8
LEVELLAND	10,200	5.3
LEVI	65	1.2
LEWISVILLE	6,700	1.0
LIBERTY HILL	300	1.2
LITTLE RIVER	200	2.0
LITTLEFIELD	8,000	2.1
LOCKNEY	2,490	3.3
LOHN	100	.8
LOMETA	655	1.2
LONE OAK	1,100	4.8
LOOP	315	5.7
LORAIN	860	1.8
LORENA	437	1.3
LORENZO	1,200	3.0

STATE AND COMMUNITY POPULATION FLUORIDE CONTENT IN PPM

TEXAS CONT

STATE AND COMMUNITY	POPULATION	FLUORIDE CONTENT IN PPM
GROVETON	1,160	.9
GRUVER	1,500	2.3
HALE CENTER	2,128	3.7
HALLETTSVILLE	2,800	.7
HALLSBURG	150	2.4
HALTOM CITY	32,100	1.5
HAMILTON	3,050	1.0
HAPPY	700	3.5
HARLINGEN	41,100	.8
HARRISON	25	2.4
HART	700	1.8
HASKELL	4,016	1.9
HEBBRONVILLE	4,500	2.9
HEDLEY	494	1.2
HEDWIG VILLAGE	1,450	.8
HEIDENHEIMER	150	1.8
HEREFORD	10,100	3.8
HERMLEIGH	671	1.6
HEWITT	79	1.2
HIDALGO	800	.7
HILLSBORD	7,830	2.0
HILLTOP	200	1.6
HILSHIRE VILLAGE	630	.8
HITHCOCK	5,216	.9
HOLLAND	650	4.0
HONEY GROVE	2,071	1.5
HOWE	680	1.5
HUBBARD	1,672	3.1
HUNTERS CREEK VILLAGE	3,000	.8
HUNTINGTON	1,091	.7
HURST	16,750	1.4
HUTCHINS	1,450	3.0
HUTTO	400	4.9
IDALOU	1,650	3.5
IMPERIAL	600	1.8
IRAAN	1,200	1.5
IRENE	100	4.3
IRVING	71,200	2.5
ITALY	1,500	3.0
ITASCA	1,439	.9
JACKSONVILLE	11,346	.7
JEAN	300	4.0
JOAQUIN	528	2.2
JONESBORO	378	1.0
JONESTOWN	300	1.6
KARNES CITY	2,795	2.2
KEENE	1,700	.8
KEMAH	550	2.0

Figure 5.—NUMBER OF COMMUNITIES WITH NATURAL FLUORIDE-BEARING WATER AND POPULATION SERVED ACCORDING TO RANGE OF FLUORIDE CONCENTRATION IN WATER SUPPLIES

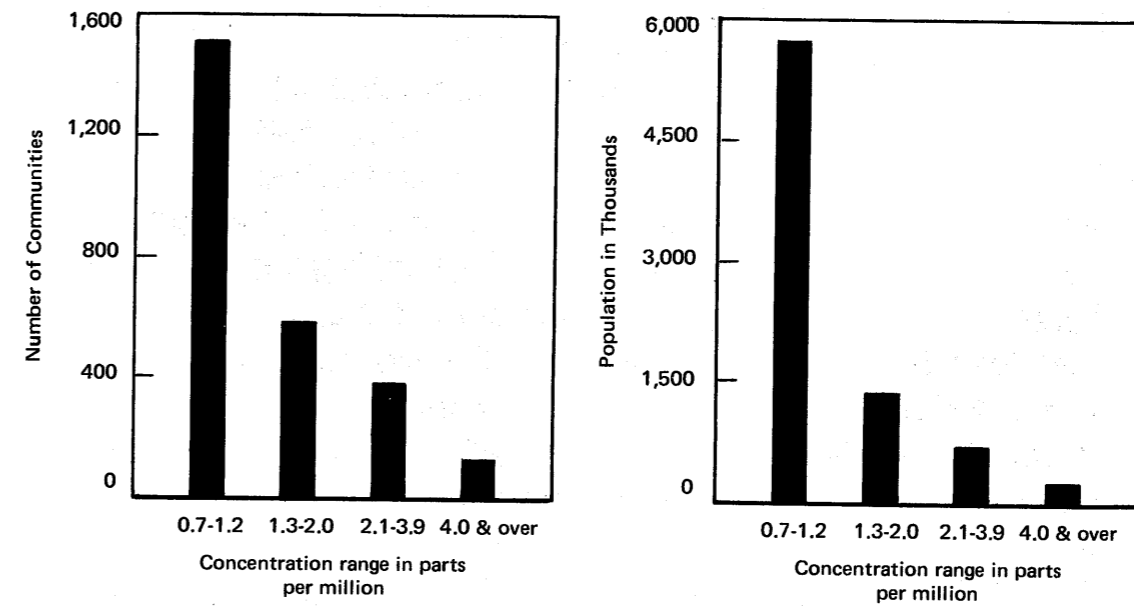


Table 6.—PERCENT OF POPULATION CONSUMING NATURAL FLUORIDE-BEARING WATER, BY CONCENTRATION RANGE

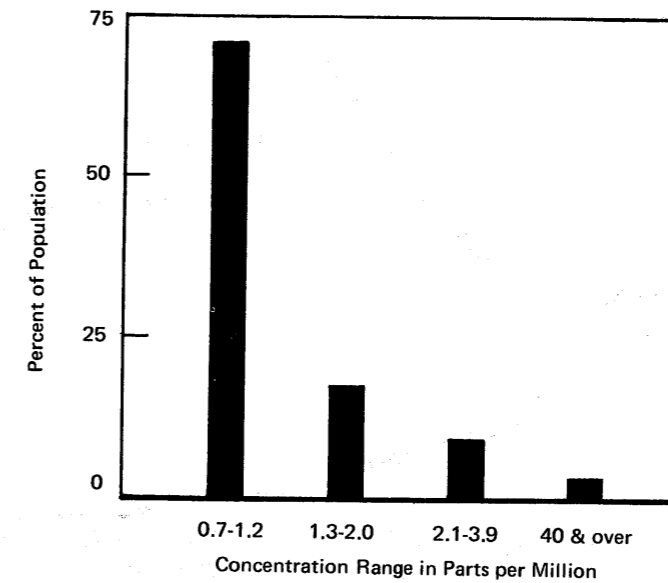


Figure 7.—NUMBER AND SIZE OF COMMUNITIES WITH 0.7 PPM OR MORE NATURALLY OCCURRING FLUORIDE IN THE WATER SUPPLIES

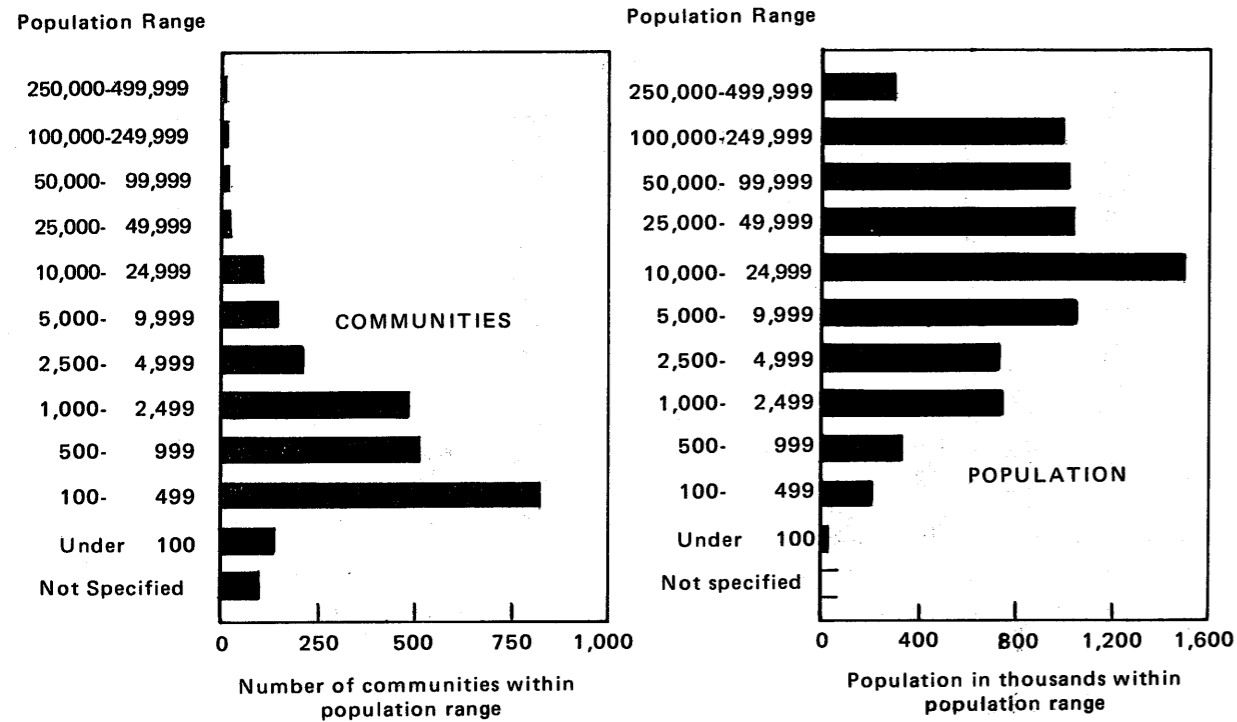
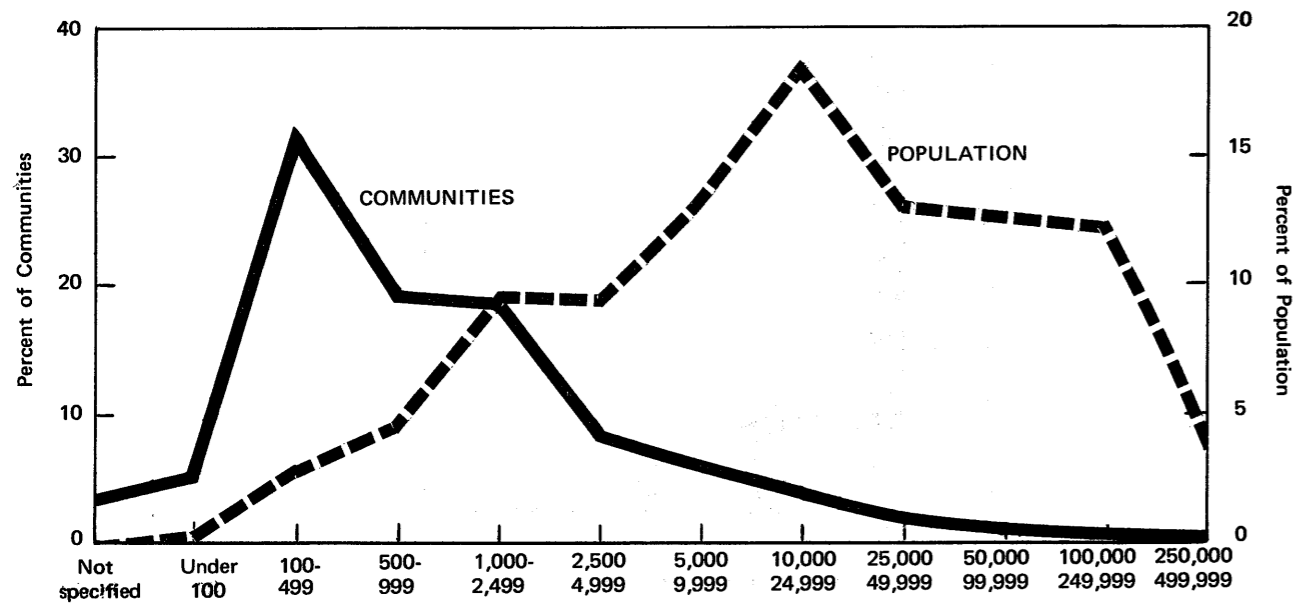


Figure 8.—DISTRIBUTION OF COMMUNITIES WITH NATURAL FLUORIDE-BEARING WATER BY POPULATION RANGE



STATE AND COMMUNITY POPULATION FLUORIDE CONTENT IN PPM

TEXAS CONT

EARTH	1,450	2.7
ECTOR	519	3.0
EDCOUCH	2,805	1.2
EDDY	600	2.0
EDEN	1,500	1.0
EDINBURG	19,500	.9
EL CARY	250	1.0
EL INDIO	380	.7
EL LAGO	750	1.0
EL PASO	313,900	.8
ELDORADO	2,790	2.5
ELK	300	2.0
ELSA	3,847	1.0
EMHOUSE	150	3.2
ESTELLINE	400	.9
EULESS	12,500	2.5
EVERMAN	1,700	.7
FALFURRIAS	6,707	.8
FALLS CITY	462	.8
FARWELL	1,544	3.3
FERRIS	1,807	4.7
FLORENCE	600	1.2
FLOYDADA	4,435	4.1
FOLLETT	564	1.0
FOREST HILLS	3,800	1.8
FORRESTON	350	5.4
FORSAN	585	1.2
FORT GATES	300	2.0
FORT STOCKTON	7,500	2.1
FREER	2,724	1.4
FRIENDSTOWN	75	.8
FRIONA	2,400	3.1
FROST	495	4.1
GALVESTON	69,900	.9
GANADO	1,626	2.3
GATESVILLE	7,500	2.3
GEORGE WEST	1,878	1.2
GERALD	700	1.8
GIDDINGS	3,020	.8
GOLDWAITE	1,383	1.0
GOODRICH	300	1.1
GOREE	543	1.5
GORMAN	990	.8
GRAND PRAIRIE	42,700	1.0
GRANDFALLS	1,000	2.5
GRANDVIEW	1,000	.7
GRANGER	1,400	3.0
GROOM	679	1.0

STATE AND COMMUNITY POPULATION FLUORIDE CONTENT IN PPM

TEXAS CONT

Community	Population	Fluoride Content (ppm)
CHARLOTTE	1,400	.7
CHILDRESS	6,550	.7
CHILLICOTHE	1,240	.8
CHILTON	786	2.3
CHINA GROVE	223	3.6
CHINA SPRINGS	700	1.3
CLAUDE	1,035	1.5
CLAY	100	1.9
CLEBURNE	16,500	.8
CLIFTON	2,230	.7
CLOVERLEAF	5,000	1.3
CLUTE	5,800	.8
CLYDE	1,116	.9
COAHOMA	1,545	1.0
COLORADO CITY	6,730	.8
COMBES	510	.8
COMFORT	1,650	2.0
COPPELL	1,015	3.0
CORSICANA	21,500	.8
COTTON CENTER	475	3.0
COTULLA	3,860	1.0
COVINGTON	405	2.6
CRANFILLS GAP	525	1.0
CRAWFORD	580	2.3
CROSBYTON	2,650	2.8
CROWELL	1,710	.9
CUERO	7,250	1.0
DALHART	5,280	2.4
DALWORTHINGTON GARDENS	630	1.0
DANIELDALE	2,000	2.4
DARROUZETT	393	1.2
DE SOTO	4,950	2.5
DEER PARK	6,300	1.0
DELL CITY	950	1.7
DENVER CITY	4,900	2.9
DETROIT	425	4.1
DICKENS	400	.9
DICKINSON	4,715	.8
DILLEY	2,318	.9
DIMMITT	4,250	2.8
DODD CITY	239	1.0
DODSON	305	1.4
DONNA	7,650	.7
DRIPPING SPRINGS	400	3.2
DUBLIN	2,490	.7
DUMAS	10,547	1.5
DUNCANVILLE	9,982	1.1
EAGLE PASS	13,750	1.1

Table 2.--Number of communities with natural fluoride content of 0.7 ppm or more in water supply systems showing population by single and multiple concentrations reported and by range of concentrations reported, by State

State	Number of Communities	Population	Single Concentration Reported		Multiple Concentration Reported		Communities With Maximum and Minimum Fluoride Content Reported	
			Communities	Population	Communities	Population	Communities	Population
Total	2,630	8,106,435	2,459	6,867,432	107	267,527	64	971,476
Alabama	20	29,236	19	21,859	1	7,377	-	-
Alaska	2	530	2	530	-	-	-	-
Arizona	105	270,430	58	107,811	47	162,639	-	-
Arkansas	9	17,345	9	17,345	-	-	-	-
California	54	920,320	8	25,550	-	-	46	894,770
Colorado	100	485,963	100	485,963	-	-	-	-
Connecticut	6	2,180	6	2,180	-	-	-	-
Delaware	-	-	-	-	-	-	-	-
Dist. of Col.	-	-	-	-	-	-	-	-
Florida	26	300,446	14	225,485	-	-	12	74,961
Georgia	7	16,670	7	16,670	-	-	-	-
Hawaii	-	-	-	-	-	-	-	-
Idaho	35	67,606	35	67,606	-	-	-	-
Illinois	212	675,854	211	674,789	1	1,065	-	-
Indiana	88	182,722	88	182,722	-	-	-	-
Iowa	163	276,035	162	275,365	1	670	-	-
Kansas	85	139,957	85	139,957	-	-	-	-
Kentucky	8	14,220	8	14,220	-	-	-	-
Louisiana	36	98,377	12	82,111	24	16,266	-	-
Maine	1	712	1	712	-	-	-	-
Maryland	26	32,811	26	32,811	-	-	-	-
Massachusetts	-	-	-	-	-	-	-	-
Michigan	47	95,965	47	95,965	-	-	-	-
Minnesota	12	3,813	11	3,351	1	462	-	-
Mississippi	18	57,730	14	5,855	4	51,875	-	-
Missouri	72	125,240	72	125,240	-	-	-	-
Montana	39	83,950	39	83,950	-	-	-	-
Nebraska	65	83,971	65	83,971	-	-	-	-
Nevada	13	10,641	13	10,641	-	-	-	-
New Hampshire	8	10,996	8	10,996	-	-	-	-
New Jersey	16	83,000	16	83,000	-	-	-	-
New Mexico	161	291,396	161	291,396	-	-	-	-
New York	6	1,745	-	-	-	-	6	1,745
North Carolina	18	55,500	18	55,500	-	-	-	-
North Dakota	38	33,515	38	33,515	-	-	-	-
Ohio	127	231,279	127	231,279	-	-	-	-
Oklahoma	158	246,383	158	246,383	-	-	-	-
Oregon	29	30,994	29	30,994	-	-	-	-
Pennsylvania	-	-	-	-	-	-	-	-
Rhode Island	2	600	2	600	-	-	-	-
South Carolina	24	75,270	24	75,270	-	-	-	-
South Dakota	109	67,818	106	67,131	3	687	-	-
Tennessee	-	-	-	-	-	-	-	-
Texas	508	2,734,362	508	2,734,362	-	-	-	-
Utah	9	2,874	9	2,874	-	-	-	-
Vermont	-	-	-	-	-	-	-	-
Virginia	96	57,577	76	42,286	20	15,291	-	-
Washington	15	47,727	15	47,727	-	-	-	-
West Virginia	1	400	1	400	-	-	-	-
Wisconsin	44	84,100	42	77,850	2	6,250	-	-
Wyoming	12	58,155	9	53,210	3	4,945	-	-

Table 3.—Number of communities with natural fluoride content of 0.7 ppm or more in water supply systems by range of fluoride concentration within water supply systems, by State

State	Fluoride Content in PPM							
	0.7 — 1.2		1.3 — 2.0		2.1 — 3.9		4.0 and over	
	Communities	Population	Communities	Population	Communities	Population	Communities	Population
Total	1,517	5,782,628	589	1,366,533	386	712,253	138	245,021
Alabama	11	11,447	5	10,984	3	6,555	1	250
Alaska	-	-	1	30	1	500	-	-
Arizona	57	187,346	19	61,601	18	10,624	11	10,879
Arkansas	8	16,595	1	750	-	-	-	-
California	50	885,420	4	34,900	-	-	-	-
Colorado	58	321,703	26	30,917	15	133,143	1	200
Connecticut	3	920	2	960	1	300	-	-
Delaware	-	-	-	-	-	-	-	-
Dist. of Col.	-	-	-	-	-	-	-	-
Florida	15	252,107	10	47,739	1	600	-	-
Georgia	5	16,350	1	-	1	320	-	-
Hawaii	-	-	-	-	-	-	-	-
Idaho	26	60,425	5	6,319	3	589	1	273
Illinois	141	554,275	40	76,241	25	26,327	6	19,011
Indiana	73	158,255	13	21,949	1	248	1	2,270
Iowa	78	187,259	48	64,965	33	20,755	4	3,056
Kansas	58	104,430	21	32,462	5	2,890	1	175
Kentucky	8	14,220	-	-	-	-	-	-
Louisiana	31	87,266	2	2,611	2	3,000	1	5,500
Maine	-	-	1	712	-	-	-	-
Maryland	16	25,226	6	2,240	2	5,130	2	215
Massachusetts	-	-	-	-	-	-	-	-
Michigan	41	89,400	6	6,565	-	-	-	-
Minnesota	9	2,923	1	268	2	622	-	-
Mississippi	16	55,785	2	1,945	-	-	-	-
Missouri	45	108,274	13	10,799	11	5,470	3	697
Montana	25	75,366	9	6,036	4	1,928	1	620
Nebraska	56	80,402	9	3,569	-	-	-	-
Nevada	5	4,877	5	3,383	1	458	2	1,923
New Hampshire	7	9,196	1	1,800	-	-	-	-
New Jersey	14	70,800	2	12,200	-	-	-	-
New Mexico	100	201,502	32	49,148	19	39,183	10	1,563
New York	3	1,365	2	280	1	100	-	-
North Carolina	12	43,200	4	8,600	2	3,700	-	-
North Dakota	13	12,237	11	12,309	9	3,618	5	5,351
Ohio	69	151,123	56	78,004	2	2,152	-	-
Oklahoma	85	125,384	57	109,556	11	9,959	5	1,484
Oregon	23	23,235	5	6,819	1	940	-	-
Pennsylvania	-	-	-	-	-	-	-	-
Rhode Island	1	200	1	400	-	-	-	-
South Carolina	10	29,085	3	3,100	9	32,005	2	11,080
South Dakota	21	12,978	20	9,840	56	40,936	12	4,064
Tennessee	-	-	-	-	-	-	-	-
Texas	238	1,649,261	108	602,281	111	316,096	51	166,724
Utah	7	2,563	2	311	-	-	-	-
Vermont	-	-	-	-	-	-	-	-
Virginia	29	30,581	19	6,937	30	10,373	18	9,686
Washington	11	42,066	4	5,661	-	-	-	-
West Virginia	1	400	-	-	-	-	-	-
Wisconsin	27	19,176	11	31,192	6	33,732	-	-
Wyoming	11	58,005	1	150	-	-	-	-

STATE AND COMMUNITY

POPULATION

FLUORIDE CONTENT IN PPM

TEXAS CONT

BELLS	707	.9
BELLVILLE	2,790	.7
BELTON	9,300	4.1
BEN FRANKLIN	150	3.8
BENAVIDES	2,250	1.2
BENJAMIN	308	1.9
BIG LAKE	3,098	1.5
BIG SPRING	34,800	1.0
BISHOP	4,050	1.1
BLED SOE	143	2.0
BLOOMING GROVE	675	5.0
BLOOMINGTON	1,850	1.3
BLUE RIDGE	330	.7
BOERNE	2,200	2.0
BONHAM	7,410	1.3
BOOKER	1,025	1.2
BORGER	21,000	1.9
BOVINA	1,250	1.2
BOYCE	80	4.3
BRACKETTVILLE	1,500	1.5
BRADY	6,200	.9
BRAZORIA	1,100	.8
BRISTOL	160	5.5
BRONSON	600	1.0
BROWNFIELD	11,100	4.1
BROWNVILLE	52,800	.7
BRUCEVILLE	210	3.8
BRUNI	275	.8
BRYSON	545	.8
BUCKHOLTS	900	2.9
BUCKINGHAM	225	3.5
BUFFALO LAKES	700	2.9
BURKBURNETT	8,750	.7
BURLESON	2,445	1.0
BURNETT	2,254	2.0
BYNUM	270	5.0
CALLIHAN	300	1.2
CAMPBELLTON	271	.8
CANADIAN	2,425	1.6
CANUTILLO	1,425	1.4
CANYON	7,790	3.0
CARLSBAD	400	.9
CEDAR HILL	2,500	1.6
CELESTE	918	1.6
CELINA	1,325	.7
CHALK BLUFF	1,150	1.4
CHANNELVIEW	7,860	.7
CHANNING	390	.7

STATE AND COMMUNITY POPULATION FLUORIDE CONTENT IN PPM

SOUTH DAKOTA CONT

WOLSEY	354	2.6
YALE	171	2.5

TENNESSEE

NONE

TEXAS

2,734,362

ABBOTT	330	1.1
ABERNATHY	2,491	2.4
AGUA DULCE	667	.8
ALAMO	4,010	1.0
ALLEN	1,300	3.1
ALPINE	5,200	2.4
ALTO	1,500	.7
ALTO LOMA	1,020	.8
ALVARADO	1,775	3.1
ALVIN	7,600	1.0
AMARILLO	164,774	1.4
AMHERST	875	1.1
ANDREWS	11,740	5.6
ANGLETON	9,300	1.1
ANNA	605	1.0
ANTHONY	1,125	.9
ANTON	1,368	1.1
AQUILLA	124	6.5
ARLINGTON	60,600	1.0
ARP	1,010	.9
AUBREY	560	.9
AXTELL	300	2.7
BACLIFF	1,782	1.1
BAGWELL	195	3.0
BALCH SPRINGS	10,200	1.1
BALMORHEA	604	1.6
BANDERA	1,065	1.8
BANQUETE	350	1.1
BARDWELL	220	6.3
BARNHART	98	.9
BARRY	168	5.4
BARSTOW	600	1.8
BARTLETT DEFLUORIDATING	1,641	1.0
BAYTOWN	38,000	1.0
BEDFORD	5,750	2.5
BEEVILLE	14,100	.8
BELFALLS	50	2.4
BELLEVUE	289	2.0
BELLMEAD	8,158	1.0

60

Table 4.—Number of communities with natural fluoride concentration of 0.7 ppm or more, by specific fluoride concentration

Fluoride content in PPM	Number of communities	Population	Single concentration reported		Multiple concentration reported		Communities with maximum and minimum fluoride content reported	
			Communities	Population	Communities	Population	Communities	Population
Total	2,630	8,106,435	2,459	6,867,432	107	267,527	64	971,476
.7	338	1,412,692	288	1,059,058	30	31,843	20	321,791
.8	323	1,221,913	307	1,034,924	9	105,739	7	81,250
.9	257	858,122	239	665,400	10	4,402	8	188,320
1.0	278	1,276,329	262	990,232	9	21,798	7	264,299
1.1	158	607,433	150	593,712	4	8,535	4	5,186
1.2	163	406,139	154	372,737	3	1,528	6	31,874
1.3	96	151,101	93	146,247	1	2,141	2	2,713
1.4	110	344,776	103	335,495	3	1,577	4	7,704
1.5	81	340,018	77	252,446	3	53,489	1	34,083
1.6	82	165,267	81	165,217	1	50	-	-
1.7	39	70,306	34	48,574	2	1,576	3	20,156
1.8	79	108,492	78	107,060	1	1,432	-	-
1.9	30	73,625	30	73,625	-	-	-	-
2.0	72	112,948	62	83,878	9	15,070	1	14,000
2.1	21	152,513	20	152,413	-	-	1	100
2.2	38	46,157	37	46,157	1	-	-	-
2.3	30	45,116	28	44,472	2	644	-	-
2.4	41	54,092	41	54,092	-	-	-	-
2.5	29	133,247	29	133,247	-	-	-	-
2.6	30	31,363	27	25,093	3	6,270	-	-
2.7	16	18,563	16	18,563	-	-	-	-
2.8	25	23,684	23	23,256	2	428	-	-
2.9	18	24,638	18	24,638	-	-	-	-
3.0	39	42,141	37	41,683	2	458	-	-
3.1	15	18,394	15	18,394	-	-	-	-
3.2	10	9,909	9	7,972	1	1,937	-	-
3.3	7	13,304	7	13,304	-	-	-	-
3.4	10	4,306	9	4,306	1	-	-	-
3.5	21	34,337	19	33,887	2	450	-	-
3.6	17	13,925	16	13,496	1	429	-	-
3.7	7	4,633	7	4,633	-	-	-	-
3.8	9	26,906	9	26,906	-	-	-	-
3.9	3	15,025	3	15,025	-	-	-	-
4.0	19	25,188	19	25,188	-	-	-	-
4.1	12	28,743	11	28,743	1	-	-	-
4.2	5	2,458	5	2,458	-	-	-	-
4.3	10	9,225	10	9,225	-	-	-	-
4.4	6	2,311	4	499	2	1,812	-	-
4.5	9	20,733	9	20,733	-	-	-	-
4.6	5	1,943	4	1,901	1	42	-	-
4.7	3	4,841	3	4,841	-	-	-	-
4.8	4	17,103	4	17,103	-	-	-	-
4.9	1	400	1	400	-	-	-	-
5.0	9	9,417	9	9,417	-	-	-	-
5.1	4	68,907	3	68,868	1	39	-	-
5.2	4	2,108	3	1,770	1	338	-	-
5.3	2	10,474	2	10,474	-	-	-	-
5.4	4	2,116	4	2,116	-	-	-	-
5.5	5	13,324	4	7,824	1	5,500	-	-
5.6	5	15,603	5	15,603	-	-	-	-

Table 4.—Continued

Fluoride content in PPM	Number of communities	Population	Single concentration reported		Multiple concentration reported		Communities with maximum and minimum fluoride content reported	
			Commun- ities	Population	Commun- ities	Population	Commun- ities	Population
			5.7	1	315	1	315	-
5.8	4	1,418	4	1,418	-	-	-	-
6.0	4	2,078	4	2,078	-	-	-	-
6.1	1	42	1	42	-	-	-	-
6.2	1	105	1	105	-	-	-	-
6.3	1	220	1	220	-	-	-	-
6.5	1	124	1	124	-	-	-	-
6.8	2	1,030	2	1,030	-	-	-	-
7.0	2	-	2	-	-	-	-	-
7.2	2	2,245	2	2,245	-	-	-	-
7.5	1	250	1	250	-	-	-	-
7.6	1	450	1	450	-	-	-	-
7.8	1	397	1	397	-	-	-	-
7.9	2	-	2	-	-	-	-	-
8.2	1	378	1	378	-	-	-	-
8.5	1	291	1	291	-	-	-	-
9.4	1	150	1	150	-	-	-	-
9.6	1	64	1	64	-	-	-	-
9.7	1	-	1	-	-	-	-	-
11.0	1	8	1	8	-	-	-	-
13.6	1	562	1	562	-	-	-	-

Table 5.—Number of communities with natural fluoride content of 0.7 ppm or more in community water supplies, by population range of communities

Population size	Number of communities	Population	Single concentration reported		Multiple concentrations reported		Communities with maximum and minimum fluoride content reported	
			Commun- ities	Population	Commun- ities	Population	Commun- ities	Population
			Total	2,630	8,106,435	2,459	6,867,432	107
250,000 to 499,999	1	313,900	1	313,900	-	-	-	-
100,000 to 249,999	7	1,006,204	5	749,504	-	-	2	256,700
50,000 to 99,999	16	1,020,502	11	715,569	2	105,033	3	199,900
25,000 to 49,999	31	1,052,360	24	809,675	1	41,502	6	201,183
10,000 to 24,999	108	1,509,731	95	1,312,114	1	12,370	12	185,247
5,000 to 9,999	154	1,070,003	135	945,913	6	39,869	13	84,221
2,500 to 4,999	218	755,068	204	705,181	7	24,788	7	25,099
1,000 to 2,499	492	770,242	464	728,312	20	29,607	8	12,323
500 to 999	516	364,657	499	351,838	9	6,796	8	6,023
100 to 499	843	235,751	810	227,635	28	7,336	5	780
Under 100	144	8,017	138	7,791	6	226	-	-
Not Specified	100	-	73	-	27	-	-	-

STATE AND COMMUNITY POPULATION FLUORIDE CONTENT IN PPM

SOUTH DAKOTA CONT

MANSFIELD	114	2.2		
MCINTOSH	568	1.3		
MEADOW	35	1.3		
MELLETTE	208	3.0		
MENNO	837	2.8		
MILLER	2,081	2.4		
MISSION HILL	165	2.8		
MORRISTOWN	219	3.1		
MOUND CITY	144	2.9		
MOUNT VERNON	379	1.5		
NEW UNDERWOOD	462	.8		
NEWELL	797	1.3		
NORTHVILLE	153	3.5		
OACOMA	312	2.9		
OLDHAM	291	8.5		
ONIDA	843	2.0		
ORIENT	133	2.9		
PARKER	1,142	1.0		
PHILIP	1,114	.9		
PIERPONT	258	5.6	.4	2.9
PLANKINTON	644	1.2		
PLATTE	1,167	2.7		
PRESHO	881	2.6		
PUKWANA	247	3.2	.7	
QUINN	162	1.2		
RAMONA	247	1.2		
RAYMOND	168	5.6		
REDFIELD	2,952	2.9		
RELIANCE	201	3.0		
ROCKHAM	197	3.4		
ROSCOE	532	2.9		
ROSWELL	39	2.8		
SINAI	166	1.7		
SPRINGFIELD	1,194	2.9		
STICKNEY	456	1.2		
STRATFORD	109	1.6		
TABOR	378	1.5		
TULARE	225	2.2		
TYNDALL	1,262	1.4		
UTICA	70	3.0		
VIBORG	699	1.1		
VIRGIL	81	2.4		
VOLIN	171	2.8		
WALL	629	2.0		
WENTWORTH	211	1.3		
WESSINGTON	378	1.0		
WETONKA	46	2.5		
WHITE LAKE	397	2.8		

STATE AND COMMUNITY POPULATION FLUORIDE CONTENT IN PPM

SOUTH DAKOTA CONT

STATE AND COMMUNITY	POPULATION	FLUORIDE CONTENT IN PPM
BRENTFORD	96	3.4
BRITTON DEFLUORIDATING	1,442	1.2
BROADLAND	10,558	3.0
BRYANT	522	4.6
CANOVA	247	1.0
CANTON	2,511	1.2
CARTHAGE	368	3.0
CAVOUR	140	.9
CHANCELLOR	214	1.5
CLAREMONT	247	3.7
COLOME	398	.9
CONDE	388	4.3
CORSICA	479	2.2
CRESBARD	229	2.2
CROOKS	167	.9
DELMONT	363	1.8
DOLAND	481	2.9
DRAPER	215	2.9
DUPREE	548	4.1
EAGLE BUTTE	495	4.3
ELK POINT	1,278	2.3
EMERY	502	.8
ESMOND	19	4.0
ETHAN	297	1.4
EUREKA	1,555	3.6
FAULKTON	1,051	1.7
FERNEY	74	3.8
FORESTBURG	155	2.4
FRANKFORT	240	2.2
FRUITDALE	79	1.2
GANN VALLEY	93	3.0
GEDDES	380	1.5
GETTYSBURG	1,950	2.4
GROTON	1,063	2.4
HECLA	444	1.1
HITCHCOCK	193	2.8
HOUGHTON	120	5.0
HOWARD	1,208	2.7
IPSWICH	1,131	2.9
IROQUIS	385	3.4
KADOKA	840	1.4
KIMBALL	912	3.3
LAKE PRESTON	955	6.8
LANE	99	2.2
LANGFORD	397	7.8
LEMMON	2,412	2.5
LEOLA	833	2.2
LESTERVILLE	173	3.0

Listing of
Communities

KEY TO LISTING

- SD Sanitary District
- WD Water District
- PART Part of a community has water with at least 0.7 ppm natural fluoride
- BLENDING Blends sources to the optimal concentration
- DEFLUORIDATING Removes fluorides to the optimal concentration
- SUB Subdivision
- WC Water Company
- MAIN OPT Maintains the optimal fluoride concentration in the water supply system

STATE AND COMMUNITY	POPULATION	FLUORIDE CONTENT IN PPM		
PENNSYLVANIA				
NONE				
RHODE ISLAND				
	600			
BURRILLVILLE PART	400	1.4		
HOPKINTON PART	200	.8		
SOUTH CAROLINA				
	75,270			
AYNOR	640	3.8		
CHERRY GROVE BEACH	300	1.4		
CONWAY	10,000	2.5		
CRESCENT BEACH	650	3.6		
GARDEN CITY	600	3.2		
GEORGETOWN	15,200	3.8		
GREELEYVILLE	540	1.1		
HEMINGWAY	1,600	1.8		
JOHNSONVILLE	910	1.2		
KINGSTREE	5,000	1.0		
LITCHFIELD BEACH	440	3.1		
MONCK'S CORNER	2,700	.7		
MULLINS	7,600	.7		
MYRTLE BEACH	10,400	4.5		
OCEAN DRIVE BEACH	680	4.0		
OLANTA	500	1.2		
PAWLEYS ISLAND	475	3.6		
SCOTIA	120	.8		
SULLIVANS ISLAND	2,500	3.6		
SUMMERTON	1,465	.7		
SURFSIDE	1,500	3.4		
VARNVILLE	1,500	.8		
WALTERBORO	8,750	.7		
WINDY HILL BEACH	1,200	1.4		
SOUTH DAKOTA				
	67,818			
AGAR	139	2.8		
ALCESTER	479	2.8		
ALEXANDRIA	614	1.4		
ALPENA	407	2.3		
AMHERST	75	6.8		
ARMOUR	875	1.2		
ASHTON	182	2.2	2.4	2.6 2.2
AVON	637	.9		
BANCROFT	86	4.5		
BELVIDERE	232	1.1		
BISON	457	1.8		

STATE AND COMMUNITY POPULATION FLUORIDE CONTENT IN PPM

COMMUNITIES, BY STATE, HAVING NATURAL FLUORIDE CONTENT OF .7 PPM OR GREATER IN COMMUNITY WATER SUPPLY

OKLAHOMA CONT

STATE AND COMMUNITY	POPULATION	FLUORIDE CONTENT IN PPM
TURPIN	200	1.8
UNION CITY	329	1.8
VERDEN	405	.8
VIAN	930	.8
WAKITA	452	1.3
WARR ACRES	7,135	1.0
WAUKOMIS	516	2.0
WEATHERFORD	6,299	1.6
WELCH	557	2.2
WELLSTON	630	3.0
WETUMKA	1,798	1.3
WOODVILLE	98	1.8
WYNNEWOOD	2,509	1.0
YALE	1,369	2.2

OREGON

30,994

STATE AND COMMUNITY	POPULATION	FLUORIDE CONTENT IN PPM
ADAMS	225	.8
ARLINGTON	940	2.1
ATHENA	960	.7
BEL AIR HEIGHTS	51	.9
BELNAP HOT SPRINGS	25	1.2
BIG EDDY	210	.8
BOARDMAN	417	1.7
CHENOWITH	3,000	.9
ECHO	510	.7
FORT KLAMATH	200	.8
FOSSIL	528	1.6
GRIFFIN	100	1.0
HEPPNER	1,561	.9
HERMISTON	4,850	1.8
HINKLE	500	1.2
HUNTINGTON	634	.7
JAN REE GARDENS	800	.9
LAKEVIEW	4,000	.7
MADRONA ESTATES	50	1.0
MAYVILLE	234	.8
MCNARY	300	1.3
MORROW COURT HOUSE	130	.8
NYSSA	2,500	1.1
ONTARIO	5,350	1.0
ORDINANCE	1,000	.9
POWER CITY	50	.9
SENECA	400	.7
STANFIELD	745	.8
UMATILLA	724	1.8

STATE AND COMMUNITY POPULATION FLUORIDE CONTENT IN PPM

ALABAMA

29,236

STATE AND COMMUNITY	POPULATION	FLUORIDE CONTENT IN PPM
BRUNDIDGE	2,523	1.4
CAMDEN	1,121	1.2
CHAPMAN	617	.8
COURTLAND	495	1.0
DEMOPOLIS	7,377	1.2 2.8
EUTAW	2,784	1.1
FAUNSDALE	124	1.3
GEORGIANA	2,093	1.2
HICKORY HILLS	100	.8
LETOHATCHEE	250	7.5
LINDEN	2,516	3.2
LITTLEVILLE	460	1.8
MT. VERNON	553	.9
NEW HOPE	953	1.0
ORRVILLE	422	.9
PINE APPLE	355	.9
RAMER	500	1.6
RED BAY	1,954	.7
THOMASTON	857	2.8
THOMASVILLE	3,182	2.4

ARIZONA

270,450

STATE AND COMMUNITY	POPULATION	FLUORIDE CONTENT IN PPM
AGUILA	250	2.7 2.4
AJO	7,049	5.0
ANTEL MESA DEV CO.		2.7
APACHE COUNTRY CLUB EST.		3.2 .9
APACHE JUNCTION	900	1.2 1.3 3.1
ARBIZO & CALDERON WC		.8
ARIZONA CITY		2.3
BAGDAD	1,462	3.0
BUCKEYE	2,286	1.0
BULLHEAD CITY	250	.7
CAMP VERDE	600	2.4
CARAVAN OASIS SUB		9.7
CAREFREE		1.0
CASA GRANDE	8,485	1.8 .8 1.3 .9
CAVE CREEK	450	1.0 1.0 1.0 1.1 1.1
CHANDLER	12,181	.8
CHLORIDE	135	1.4
CIRCLE CITY WC		.9
CLIFTON	4,191	.9
COCHISE	90	.7

STATE AND COMMUNITY	POPULATION	FLUORIDE CONTENT IN PPM				
ARIZONA CONT						
COCHISE RANCHETTES SUB.		1.0				
COLDWATER SUB.		.4	2.8	.3	.4	
COOLIDGE	5,012	1.3	.7	1.0		
DEL LAGO SUB.		2.6				
DESERT CARMEL SUB.		2.3				
DESERT ROSE		.5	3.5			
DESERT VISTA SUB.		1.7				
DOUGLAS	12,370	.8	.7	1.0	2.1	.5
DRAGON	100	.9				
DUNCAN	862	1.8				
ELFRIDA	200	1.0	.8			
ESTRELLA DELLS PART		.7	.7			
FLORENCE	2,141	.8	1.4	1.6		
FORT THOMAS	200	.8	.8	1.4		
FORTY NINER SUB.		2.6				
GARDEN CITY		2.0				
GILA BEND	1,938	7.2				
GLENDALE	30,760	.7				
GOODYEAR FARMS		.4	1.1	.6	1.0	1.4
GUADALUPE	1,200	.9	1.5	.9	.9	.4
HAYDEN	1,760	1.0	1.0	1.1	2.2	2.0
HIDDEN VALLEY SUB.		.8				
HUMBOLT	450	.7				
IRON SPRINGS	5	2.7				
JOSEPH CITY	500	.5	.8			
KINGMAN	6,021	.7				
KINGS RANSOM SUB.		2.7				
LAKE HAVASU CITY		1.5	1.4			
LAKESIDE		.8				
LAKESIDE SUB.		4.2				
LITCHFIELD PARK	900	1.0				
LITTLEFIELD	50	.7				
LONG MOUNTAIN		.9				
LUKEVILLE CO., INC.		5.0				
MAMMOTH	1,612	5.5	3.3			
MARICOPA	400	.7				
MARINA VILLAGE SUB.		1.4				
MCNEAL	50	1.1				
MESA PARTS	50,529	6.9	1.0	1.6		
MORENCI	2,431	1.0				
NEW MAMMOTH		3.4				
PALM SPRINGS SUB.		1.5				
PALO VERDE SUB.		1.0	1.2			
PARADISE VALLEY	4,650	.7				
PARKER	1,937	4.4	2.0	3.3		
PAYSON	800	1.4	.8	.3	.7	.5
PEORIA PART	3,002	2.2	3.0			
PIMA	1,072	.8				

STATE AND COMMUNITY	POPULATION	FLUORIDE CONTENT IN PPM
OKLAHOMA CONT		
MIAMI	12,869	1.3
MORELAND	871	2.3
MORRIS	982	.8
MORRISON	256	1.6
MOUNTAIN PARK	403	.9
MULHALL	253	1.1
MUSTANG	198	.9
NASH	230	.8
NEWKIRK	2,092	.9
OCHELATA	312	1.2
OKAY	419	.8
OKEENE	1,165	1.0
OKMULGEE	15,591	1.9
OLUSTEE	463	1.5
OPTIMA	64	1.9
OWASSO	2,032	.8
PAOLI	358	1.5
PARK HILL	150	1.5
PAULS VALLEY	6,856	1.4
PERRY	5,210	1.2
PICHER	2,553	1.1
POND CREEK	935	.8
PRAGUE	1,545	.9
QUAPAW	850	.8
RALSTON	411	1.0
RAVIA	307	1.8
RINGLING	1,170	1.2
RIPLEY	263	1.6
ROCKY	343	1.3
ROFF	638	.8
ROLAND	100	1.3
ROOSEVELT	495	1.0
SAINT LOUIS	76	1.6
SAVANNA	620	.9
SENTINEL	1,154	.8
SKIATOOK	2,503	1.1
SOUTH COFFEYVILLE	622	3.0
SPERRY	883	.8
STERLING	562	13.6
STRINGTON	414	.8
STRONG CITY	51	1.4
STROUD	2,456	1.5
TERRAL	585	1.0
TEXHOMA	911	1.8
TEXOLA	202	.9
THOMAS	1,211	.8
TIPTON	1,117	.8
TURLEY	4,000	.8

STATE AND COMMUNITY POPULATION FLUORIDE CONTENT IN PPM

OKLAHOMA CONT

STATE AND COMMUNITY	POPULATION	FLUORIDE CONTENT IN PPM
FORAKER	74	2.5
FOSS	389	1.0
FRANCIS	286	1.9
FREDERICK	5,879	.9
GANS	234	.7
GARBER	905	1.2
GEARY	1,416	1.8
GOLTRY	313	.8
GOODWELL	771	1.8
GOTEBO	538	.9
GREENFIELD	128	1.1
GROVE	975	.9
GUYMON	5,768	1.8
HALLETT	132	.8
HARDESTY	187	1.3
HARRAH	934	1.0
HEALDTON	2,898	2.3
HENRYETTA	6,551	2.0
HINTON	907	.8
HOBART	5,132	.8
HOLLIS	3,006	.8
HUNTER	203	1.9
INDIAHOMA	378	8.2
INOLA	584	1.4
JET	339	1.5
KEOTA	579	.9
KEYES	627	1.4
KONAWA	1,555	.8
KREMLIN	128	1.2
LAMAR	150	2.3
LAMONT	543	1.1
LANGSTON	780	3.0
LAVERNE	1,937	1.4
LENAPAH	322	1.6
LITTLE CITY	102	1.8
LONE GROVE	500	2.0
LONE WOLF	617	.8
LOVELAND	90	1.1
MANITOU	269	1.5
MANNFORD	358	1.0
MARLOW	4,027	1.0
MARSHALL	363	1.4
MARTHA	242	1.3
MAUD	1,137	1.5
MAYSVILLE	1,530	1.0
MEDFORD	1,223	1.4
MEEKER	664	1.1
MENO	118	.8

STATE AND COMMUNITY POPULATION FLUORIDE CONTENT IN PPM

ARIZONA CONT

STATE AND COMMUNITY	POPULATION	FLUORIDE CONTENT IN PPM
PINE LAKE		.8
POMERENE	150	.7
PONDEROSA SUB.		1.0 .8
RAINBOW VALLEY		5.3 .3 6.8
RANDOLPH	400	.9
RIMROCK	20	.8
RIVER PARK		.7
ROCKY LANE SUB.		2.0
ROSE VALLEY WC		1.5
SAHUARO HILLS		4.6 2.8 1.0
SALOME	200	4.6 2.1 2.3
SAN MANUEL	4,524	2.0 3.3 1.6 2.0
SAN SIMON	200	4.7 4.1
SANTA CRUZ SUB.		1.2 1.0
SCOTTSDALE	54,504	.6 .5 .6 1.0 1.0
SO. PAC. R R MARICOPA		7.0
SOMERTON	2,119	.8 .6
SPRINGERVILLE	963	.8
ST. JOHNS	1,310	1.0 .8
STEPHENS SUB		1.2
TACNA	150	1.0 6.0
TANQUE VERDE	1,053	.6 1.8
TOLTEC	50	1.1 1.5 2.0
TONOPAH HEIGHTS	30	1.0
TONTO HILLS		4.0
TOPOCK	80	4.1
WEELTON	700	1.6 1.9
WEST WELLTON		2.0 1.9 2.0
WESTWAY SUB.		.7
WHITE TANK	25	.5 1.0 1.1 2.4
WICKENBURG	2,445	.5 .6 1.6
WILLCOX	3,018	2.1 5.7 1.2 2.0 1.9
WILLOW VALLEY		.7
WINKELMAN	1,123	1.1 .1 1.3
YUCCA	100	.9 .9 .8
YUKON WATER CO.		2.4
YUMA BLENDED	28,005	.7

ARKANSAS

STATE AND COMMUNITY	POPULATION	FLUORIDE CONTENT IN PPM
BRADLEY	712	1.1
GRAVETTE	855	1.0
HOPE BLENDED	8,399	.8
NORTH CROSSETT	750	1.6
OAKHAVEN BLENDED	87	.8
PRESCOTT BLENDED	3,533	.8
ROSSTON	500	.8
SPARKMAN BLENDED	787	.9

STATE AND COMMUNITY POPULATION FLUORIDE CONTENT IN PPM

ARKANSAS CONT

WALDO BLENDED 1,722 .8

CALIFORNIA 920,320

ALISAL 14,000 .1 4.0
 ALTADENA 30,500 .3 2.0
 APPLE VALLEY 4,500 .4 1.2
 ARCADIA 41,600 .4 1.0
 ARMONA 1,500 .6 .8
 BARSTOW 12,000 .4 .8
 BIG BEAR LAKE 7,200 .5 .9
 BISHOP 3,700 .1 3.5
 BORON 2,900 .8 1.0
 BORREGO SPRINGS 700 .5 1.5
 BUELLTON 1,200 .9
 CALIMESA 4,500 .8
 COACHELLA 5,500 .7 .9
 COALINGA 6,000 .1 .7
 COSTA MESA 51,500 .2 1.2
 DESERT HOT SPRINGS 5,000 1.1 1.3
 EAST PASADENA 8,500 .6 1.1
 FILLMORE 4,000 .7 .8
 FLORENCE 4,200 .6 .8
 FRAZIER PARK 2,000 .7 1.6
 INDIO 10,100 .5 1.0
 LANCASTER 30,000 .5 1.2
 LEMOORE 2,700 .6 1.3
 LENWOOD 1,800 .5 1.0
 MALIBU 6,300 .7 2.4
 MONTECITO 7,000 .3 1.5
 MOORPARK 3,000 .8
 NEW CUYAMA 750 1.0
 NORTH PALM SPRINGS 800 .3 1.9
 OXNARD 35,000 .6 .8
 PALMDALE 22,000 .2 1.0
 PASADENA 137,100 .2 1.6
 PERRIS 3,000 1.1
 PIRU 1,200 .9
 PORT HUENEME 6,000 .7
 RIDGECREST 6,000 .7 1.5
 RIVERSIDE 88,400 .3 1.8
 ROSEMEAD 20,000 .7 1.0
 SAN BERNARDINO 119,600 .1 2.2
 SAN GABRIEL 30,000 .3 .9
 SANTA BARBARA 60,000 .3 1.5
 SANTA PAULA 17,000 .5 .9
 SANTA SUSANA 16,000 .5 1.5
 SATICOY 5,900 .7

STATE AND COMMUNITY POPULATION FLUORIDE CONTENT IN PPM

OKLAHOMA 246,383

ADAMS 165 1.0
 AFTON 1,111 1.8
 ALLEN 1,005 2.7
 ANADARKO 6,299 .9
 ARAPAHO 351 1.0
 BAKER 70 5.2
 BEGGS 1,114 1.5
 BESSIE 226 1.8
 BETHANY 12,342 .9
 BLACKWELL 9,588 1.0
 BLANCHARD 1,377 1.0
 BLUE JACKET 274 5.3
 BOISE CITY 1,987 2.0
 BOKCHITO 620 .8
 BOKOSHE 431 .8
 BOWLEGS 200 5.2
 BOYNTON 604 1.0
 BRAMAN 336 1.4
 BRIDGEPORT 139 1.0
 BUFFALO 1,618 1.2
 BURLINGTON 174 1.0
 BUTLER 351 1.1
 BYARS 256 1.4
 CACHE 1,003 2.2
 CARNEGIE 1,500 1.7
 CATOOSA 638 1.2
 CHANDLER 2,524 .8
 CHECOTAH 2,614 .8
 CHELSEA 1,541 1.4
 CHOUTEAU 958 1.4
 CORDELL 3,589 .9
 CORN 317 .8
 COVINGTON 687 1.5
 COYLE 292 1.0
 CUSHING 8,619 1.5
 DAVENPORT 813 1.1
 DAVIDSON 429 1.1
 DELAWARE 540 1.3
 DEVOL 117 1.2
 DRUMMOND 281 1.8
 DRUMRIGHT 4,190 1.8
 DUKE 333 1.0
 EARLSBORO 257 .9
 EDMOND 12,577 1.7
 ELMORE CITY 982 .8
 EUCHA 150 1.1
 EUFAULA 2,382 .9
 FAIRLAND 646 1.0

OHIO CONT

STATE AND COMMUNITY	POPULATION	FLUORIDE CONTENT IN PPM
NEW VIENNA	928	.9
NORTH BALTIMORE	3,185	1.0
NORTH HAMPTON	537	1.3
NORTH LEWISBURG	893	1.2
OAKWOOD	822	1.7
OBLUFFTON	2,775	1.3
OHIO CITY	854	1.2
OTTAWA	3,654	1.8
OTTOVILLE	957	1.4
PANDORA	826	1.4
PATASKALA	1,510	1.2
PAYNE	1,360	1.0
PEMBERVILLE	1,339	1.0
PETTISVILLE	320	1.5
PIONEER	890	.9
PLAIN CITY	2,458	1.6
RAWSON	420	1.1
REPUBLIC	809	.8
RICHWOOD	2,333	1.0
ROCKFORD	1,184	1.6
RUSSELL POINT	1,256	.9
SABINA	2,422	1.0
SHANESVILLE	538	.8
SHERWOOD	684	.7
SOUTH CHARLESTON	1,564	1.3
SOUTH SOLON	444	.7
SOUTH VIENNA	459	1.5
SPENCERVILLE	2,235	1.7
ST. HENRY	1,148	1.7
ST. PARIS	1,489	1.7
STRYKER	1,335	1.0
SYCAMORE	1,042	.8
UNION CITY	2,696	.8
VERONA	632	1.1
WAPAKONETA	7,581	1.2
WAYNE	1,040	1.3
WAYNESFIELD	837	2.0
WEST ALEXANDRIA	1,616	1.0
WEST JEFFERSON	3,545	1.2
WEST LEIPSIC	353	1.8
WEST MANCHESTER	477	1.2
WEST MANSFIELD	817	.9
WEST UNITY	1,620	.9
WHITEHOUSE	1,360	1.4
WILLARD	5,953	.8

CALIFORNIA CONT

STATE AND COMMUNITY	POPULATION	FLUORIDE CONTENT IN PPM
SEAL BEACH	7,000	.5 1.0
SIERRA MADRE	10,900	1.1 2.4
SUMMERLAND	720	.3 1.5
SUSANA KNOLLS	1,000	.2 1.4
TEMPLE CITY VICINITY	24,000	.8 1.0
TRANQUILITY	950	.9 1.4
TWENTY-NINE PALMS	7,000	.8 1.7
VAL VERDE	1,000	.8 1.6
WEST RIVERSIDE	14,000	.2 1.0
YUCAIPA	13,100	.4 1.4

COLORADO

485,963

STATE AND COMMUNITY	POPULATION	FLUORIDE CONTENT IN PPM
ALAMOSA	6,700	2.0
APPLEWOOD UTILITIES	2,000	.7
BAKER WATER SD	18,000	.9
BASELINE HEIGHTS WD	410	2.6
BENNETT	319	1.8
BETHUNE	83	.9
BEULAH WD	396	.8
BLENDE WD	160	1.1
BOONE WD	600	.9
BRIGHTON	8,200	1.2
BRISTOW WD	200	1.3
BROADMOOR WD	5,000	1.8
BUENA VISTA	2,500	.7
BURLINGTON	2,900	1.3
BYERS	500	.8
CALHAN	410	3.0
CAMPO	235	1.2
CASCADE TOWN CO	750	2.6
CHEYENNE WELLS	1,020	.7
COLORADO SPRINGS	118,500	2.1
CRIPPLE CREEK	550	2.6
CROOK	275	.9
CROWLEY	250	2.0
DACONO	350	2.6
EADS	1,000	1.9
EAST LAKE WD	200	1.1
ENGLEWOOD	36,650	.8
EUREKA WD	382	1.4
FIRESTONE	325	1.7
FLEMING	384	.7
FLORENCE GARDENS	100	2.4
FORT LUPTON	2,532	1.2
FORT MORGAN	7,800	.9
FOUNTAIN	2,754	2.4
FOWLER	1,400	1.5

STATE AND COMMUNITY POPULATION FLUORIDE CONTENT IN PPM

COLORADO CONT

STATE AND COMMUNITY	POPULATION	FLUORIDE CONTENT IN PPM
GILCREST	415	1.3
GLENDAL	2,000	.7
GRANADA	618	.8
GRANADA WATER ASSOC	350	1.8
HARTMAN	130	1.4
HASWELL	175	2.0
HAXTUN	1,000	.7
HIGH PLAINS WD	150	1.2
HOLLY	1,160	.9
HOLYOKE	1,700	.8
HUGO	890	.9
ILIFF	240	1.1
JAMESTOWN	186	1.2
JULESBURG	1,840	.7
KEENESBURG	450	3.5
KERSEY	446	1.8
KIM WATER ASSOC	100	1.1
KIT CARSON	360	2.0
LA JUNTA	9,000	1.0
LA SALLE	1,175	1.3
LAMAR	8,750	.7
LAS ANIMAS	3,500	1.4
LIMON	2,000	.9
LOG LANE VILLAGE	310	.9
LOUVIERS	500	1.4
MANITOU SPRINGS	5,000	2.6
MANZANOLA	562	.8
MERINO	250	.8
MILLS SUB	100	1.1
MONUMENT	550	.7
OLNEY SPRINGS	269	2.6
ORDWAY	1,200	2.6
OTIS	500	.7
OVID	540	.7
PALMER LAKE	1,000	2.6
PEETZ	225	1.1
PENROSE WD	1,100	2.4
PLATTEVILLE	660	1.0
PRITCHETT	180	1.2
PUEBLO	104,200	.9
ROCKVALE	432	.8
ROCKY FORD	5,400	1.1
SALIDA	4,900	1.2
SALT CREEK WD	750	1.4
SECURITY WD	11,500	1.2
SEDALIA	260	.7
SIMLA	490	.7
SOUTH ADAMS WD	25,000	.7

STATE AND COMMUNITY POPULATION FLUORIDE CONTENT IN PPM

OHIO CONT

STATE AND COMMUNITY	POPULATION	FLUORIDE CONTENT IN PPM
FLETCHER	599	1.4
FOREST	1,380	.9
FORT LORAMIE	875	1.3
FORT RECOVERY	1,382	.7
FRANKFORT	875	.8
GENOA	2,162	1.0
GIBONSBURG	2,748	.9
GREEN SPRINGS	1,340	.9
HAMLER	654	2.3
HEATH	6,849	.7
HICKSVILLE	3,471	1.0
HILLIARD	8,212	.9
HOLGATE	1,498	2.4
JACKSON CENTER	1,153	1.0
JAMESTOWN	1,981	.9
JEFFERSONVILLE	918	1.5
KALIDA	828	1.4
KENTON	8,875	.8
KETTLERSVILLE	238	1.3
KINGSTON	1,146	.7
LA RUE	878	1.2
LAKEVIEW	1,074	1.1
LAURA	617	1.0
LAWRENCEVILLE	296	1.7
LEESBURG	974	.7
LEIPSIC	1,874	1.8
LIBERTY CENTER	969	1.4
LINDSEY	617	1.0
LONDON	7,094	.7
LYONS	630	1.5
MCCLURE	720	1.3
MCGUFFEY	674	1.8
MENDON	711	1.4
MIDDLE POINT	580	1.2
MILFORD CENTER	825	1.4
MINGO JUNCTION	5,287	.7
MINSTER	2,375	1.4
MONTPELIER	4,319	.9
MT. BLANCHARD	478	.9
MT. GILEAD	3,386	.9
MT. STERLING	1,496	1.0
MT. VICTORY	636	2.0
NEVADA	991	1.0
NEW ATHENS	482	.9
NEW BREMEN	2,208	1.7
NEW HOLLAND	822	1.4
NEW LEBANON	3,283	1.1
NEW PARIS	2,093	.7

STATE AND COMMUNITY POPULATION FLUORIDE CONTENT IN PPM

NORTH DAKOTA CONT

STATE AND COMMUNITY	POPULATION	FLUORIDE CONTENT IN PPM
NEW LEIPZIG	390	1.1
NEW SALEM	986	.8
NOONAN	625	4.0
REEDER	321	3.5
REGENT	388	1.4
RICHARDTON	792	3.6
SCRANTON	358	3.6
SOUTHWEST FARGO	3,328	.7
TURTLE LAKE	792	1.0
VERONA	162	3.6
WAHPETON	6,453	1.8

OHIO

231,279

STATE AND COMMUNITY	POPULATION	FLUORIDE CONTENT IN PPM
ADA	4,460	1.3
ALGER	1,194	1.6
ANNA	810	1.1
ANTWERP	1,683	1.9
ARLINGTON	1,039	1.6
BALTIMORE	2,386	1.6
BEAVERDAM	558	1.4
BETTSVILLE	841	1.4
BLOOMDALE	727	2.0
BLOOMINGBURG	804	1.5
BLOOMVILLE	894	1.4
BLUFFTON	2,775	1.3
BOTKINS	1,020	1.1
BOWERSVILLE	356	1.9
BROOKVILLE	4,029	1.4
BRYAN	7,907	1.1
BUCKEYE LAKE	2,129	.8
CENTERBURG	1,158	1.5
CHRISTIANSBURG	857	1.1
CLARKSBURG	474	2.0
COLDWATER	3,165	1.2
COLUMBUS GROVE	2,230	1.1
CONTINENTAL	1,210	1.9
CONVOY	1,027	1.1
CRIDERSVILLE	1,295	1.4
DEGRAFF	1,055	.7
DELPHOS	7,517	1.4
DESLER	1,969	1.4
DUNKIRK	1,039	1.4
EATON	5,724	1.0
EDON	835	.7
ELDORADO	507	1.2
ELIDA	1,455	1.1
ELMORE	1,380	1.9

STATE AND COMMUNITY POPULATION FLUORIDE CONTENT IN PPM

COLORADO CONT

STATE AND COMMUNITY	POPULATION	FLUORIDE CONTENT IN PPM
SPRINGFIELD	2,000	1.2
STERLING	11,000	.7
SUGAR CITY	410	1.8
SWINK	500	1.8
THORNTON	14,500	.7
TOWN & COUNTRY WD	500	.9
URAVAN	1,000	.8
VALLEY WD	750	1.5
VICTOR	330	2.0
WALSH	1,000	1.3
WEST LAKE WD	200	4.0
WESTCLIFFE	300	.7
WESTMINSTER	20,625	.7
WILEY	300	2.2
WOODLAND PARK	1,650	1.6
WRAY	2,350	.9
YUMA	2,200	.9

CONNECTICUT

2,180

STATE AND COMMUNITY	POPULATION	FLUORIDE CONTENT IN PPM
COLUMBIA	120	.7
COVENTRY-LAKEVIEW TERR	440	.9
COVENTRY-LAKWOOD HGTS	300	2.1
COVENTRY-NATHAN HALE	160	1.6
SOUTHBURY	360	.7
TORRINGTON	800	1.3

DELAWARE

NONE

DISTRICT OF COLUMBIA

NONE

FLORIDA

300,446

STATE AND COMMUNITY	POPULATION	FLUORIDE CONTENT IN PPM
ANNA MARIA	690	1.5
APALACHICOLA	3,099	.9 1.1
ARCADIA	5,889	.6 1.8
BLOUNTSTOWN	2,375	.7
BRADENTON BEACH	1,124	1.2 1.8
FERNANDINA BEACH	7,276	.6 .9
FORT MYERS BEACH	2,463	.9 1.6
FORT WALTON BEACH	12,147	.9 1.5
HOLMES BEACH	1,143	1.5
JACKSONVILLE	201,030	.7
JACKSONVILLE BEACH	12,049	.9

STATE AND COMMUNITY POPULATION FLUORIDE CONTENT IN PPM

FLORIDA CONT

LONG BEACH	66	1.0	
MAYPORT	450	.7	
MEXICO BEACH	600	2.4	
ONECO	1,530	1.6	
PALM VALLEY	300	.9	
PALMA SOLA	900	2.0	
PALMETTO	5,556	1.3	2.2
PONTE VERDE BEACH	800	.7	1.1
RIVER CITY		1.4	
SANIBEL	250	.6	2.0
SARASOTA	34,083	1.2	1.8
TRENTON	941	1.2	
WAUCHULA	3,411	.7	
WEWAHITCHKA	1,436	.7	1.5
ZOLFO SPRINGS	838	1.1	1.4

GEORGIA

16,670

FORT GAINES	15,000	.8	
INDIAN SPRINGS		1.7	
MOULTRIE COTTON MILLS	350	1.1	
PEACHTREE HILLS APTS.	700	.9	
SILOAM	320	3.5	
TRANSCONTINENTAL P L CO		.7	
VEREEN MEMORIAL HOSP.	300	.7	

IDAHO

67,606

ABERDEEN	1,484	.7	
ASHTON	1,256	.8	
BLISS	91	.7	
BRUNEAU	120	2.0	
BUHL	3,059	1.9	
CALDWELL	12,694	.7	
CASTLEFORD	274	1.2	
DRUMMOND	31	1.8	
EILER	1,247	1.2	
ELK CITY	65	.7	
EMMETT	3,769	1.0	
FRUITLAND	1,343	.9	
GRANDVIEW	110	2.1	
GREENLEAF	200	.7	
HAMER	140	.8	
HOLLISTER	80	2.2	
HOMEDALE	1,381	.7	
KINGHILL	110	.7	
KUNA	516	1.0	
MACKS INN	82	.7	

STATE AND COMMUNITY POPULATION FLUORIDE CONTENT IN PPM

NORTH CAROLINA

55,500

AYDEN	3,100	.9
BAILEY	800	.7
BELHAVEN	2,000	.7
EDENTON	5,000	.9
FARMVILLE	5,000	.9
HAMILTON	500	.7
JACKSONVILLE	15,000	1.1
KING	800	2.0
LITTLETON	2,000	1.2
PLYMOUTH	5,000	.8
POWELLSVILLE	200	1.2
RICH SQUARE	1,200	2.1
ROBERSONVILLE	1,800	1.0
TABOR CITY	2,800	.7
WENTWORTH	100	1.8
WILLIAMSTON	7,000	1.4
WINDSOR	2,500	2.9
WINTON	700	1.4

NORTH DAKOTA

33,515

ABERCROMBIE	244	2.6
ALMONT	190	.9
BELFIELD	1,064	1.8
BERTHOLD	431	1.5
BOWMAN	1,730	1.6
COGSWELL	305	3.6
COLUMBUS	672	1.7
ELLIOT	62	2.7
FLASHER	515	2.0
FLAXTON	375	1.0
FORBES	138	2.0
FULLERTON	181	1.8
GLEN ULLIN	1,210	3.5
GOODRICH	392	1.3
HALLIDAY	509	.7
HEBRON	1,340	4.0
HETTINGER	1,769	4.5
KENMARE	2,463	.9
LEEDS	797	1.2
LEHR	381	1.2
LITCHVILLE	345	1.3
MAPLETON	180	.9
MCCLUSKEY	751	1.0
MERCER	154	4.6
MOORETON	164	2.2
MOTT	1,463	5.4
NEW ENGLAND	1,095	.8

STATE AND COMMUNITY POPULATION FLUORIDE CONTENT IN PPM

NEW MEXICO CONT

STATE AND COMMUNITY	POPULATION	FLUORIDE CONTENT IN PPM
RUIDOSO DOWNS	407	.7
SAN JON	411	3.8
SAN JOSE	356	1.9
SAN MATEO	230	.9
SAN MIGUEL	150	9.4
SAN RAFAEL	600	1.0
SAN YSIDRO	26	1.8
SANTA CRUZ	600	1.3
SANTA RITA	1,772	.8
SANTO DOMINGO	900	1.0
SEAMA VILLAGE	250	1.3
SEBOYETITA	140	.8
SOCORRO	5,271	.7
SOHAM	210	1.3
SOUTH OJO CALIENTE	208	1.1
STANDING ROCK		3.6
SUNLAND PARK	600	1.1
TATUM	1,168	1.1
TEXICO	889	1.6
TOHATCHI	200	1.2
TORREON		3.8
TRUCHAS	400	.8
TRUTH OR CONSEQUENCES	4,269	.8
TUCUMARI	8,143	1.5
TULAROSA	2,300	1.0
TWIN LAKES		.7
UPPER CAPULIN	70	.9
VADO	90	1.0
VANADIUM	300	.8
VAUGHN	1,170	2.6
WATERFLOW	15	.8
WATROUS	150	1.2
WHITE HORSE		1.1
WIMATTVILLE	130	1.2
YOUNGSVILLE	20	2.4
ZUNI PUEBLO	3,585	2.1

NEW YORK

STATE AND COMMUNITY	POPULATION	FLUORIDE CONTENT IN PPM
CASTORLAND	100	2.1
CHILI MEADOWS	150	.8
ELBA	615	.7
LAKE SAPPHIRE	150	1.4
WINEBROOK HILLS	600	.7
WINONA LAKE	130	1.4

STATE AND COMMUNITY POPULATION FLUORIDE CONTENT IN PPM

IDAHO CONT

STATE AND COMMUNITY	POPULATION	FLUORIDE CONTENT IN PPM
MARSING	555	1.9
NAMPA	19,961	1.1
NEW MEADOWS	647	1.0
NEW PLYMOUTH	998	1.0
NEWDALE	273	4.2
PARMA	1,245	.9
PATTERSON	80	.7
REXBURG	7,025	.8
ROBERTS	420	.8
RUPERT	4,119	.8
ST. ANTHONY	2,554	1.6
TETON	399	2.3
WHITE BIRD	250	1.1
WILDER	603	1.0
WINCHESTER	425	1.1

ILLINOIS

STATE AND COMMUNITY	POPULATION	FLUORIDE CONTENT IN PPM	
ABINGDON	3,469	2.6	1.4
ALEDO	3,080	1.2	
ALEXIS	878	1.2	
ALHAMBRA	537	1.1	
ALPHA	637	1.0	
ALTONA	505	2.4	
ANCHOR	194	.7	
ANDOVER	295	1.6	
ANTIOCH	2,268	1.0	.8
ARCOLA	2,273	.9	.4
ARLINGTON HEIGHTS	27,878	1.1	
ARROWSMITH	319	.9	
ATKINSON	944	.7	
AURORA	67,715	1.2	
BARDOLPH	266	2.5	
BARRINGTON WOODS	285	.9	
BATAVIA	7,496	1.1	
BAYLIS	284	1.6	
BEECHER	1,367	.8	
BELMONT	320	1.0	
BELWOOD	20,729	1.2	2.1
BENSENVILLE	9,141	1.0	
BIGGSVILLE	345	2.5	.3
BLOOMINGDALE	1,262	4.3	
BLUE MOUND	1,038	1.4	.2
BONA TERRA	136	.8	
BRACEVILLE	558	1.4	
BRADFORD	857	1.7	
BRAIDWOOD	1,944	1.4	
BRIMFIELD	656	3.2	2.8

STATE AND COMMUNITY POPULATION FLUORIDE CONTENT IN PPM

ILLINOIS CONT

STATE AND COMMUNITY	POPULATION	FLUORIDE CONTENT IN PPM	
BROADLANDS	344	.7	
BUDA	732	1.2	
BUFFALO GROVE	1,492	.8	
BUREAU JUNCTION	401	5.5	
BUSHNELL	3,710	2.6	3.0
CABERY	293	1.8	
CALHOUN	188	.9	
CAMBRIDGE	1,665	1.1	
CAMP GROVE	255	2.1	
CARBON CLIFF	1,268	1.1	
CARBON HILL	236	.8	
CEDAR POINT	308	1.2	
CHENOA	1,423	1.2	.7
CLAREMONT	223	.7	
COAL CITY	2,852	.7	
COAL VALLEY	435	.7	
COOKSVILLE	221	1.3	
CORNELL	524	.8	
CUBA	1,380	2.8	3.5
CULLOM	555	.8	
DANFORTH	394	1.8	.9
DEPUE	1,920	.8	
DIAMOND	250	.8	
DONOVAN	320	.7	
DUNLAP	564	1.5	
EAST MOLINE	16,732	1.0	
EDELSTEIN	56	.7	
EILEEN	384	.7	
ELBURN	960	.7	
ELKGROVE VILLAGE	6,680	.9	
ELLIOTT	343	.7	
ELLSWORTH	224	.8	
ELMHURST	36,991	1.2	
ELMWOOD	1,882	3.1	2.9
ENFIELD	791	3.0	
FAIRVIEW	544	2.7	
FARMINGTON	2,831	2.3	
FERNDAL HEIGHTS	400	1.2	
FINDLAY	759	1.7	
GALVA	3,060	1.6	2.6
GARDNER	1,041	1.4	
GENEVA	7,646	1.0	
GILCREST	35	1.9	
GLASFORD	1,012	2.9	3.4
GLEN ELLYN HEIGHTS	15,972	4.0	
GRAND RIDGE	659	1.0	
GRANDWOOD PARK	1,453	.8	
GRANVILLE	1,048	1.2	1.4

STATE AND COMMUNITY POPULATION FLUORIDE CONTENT IN PPM

NEW MEXICO CONT

STATE AND COMMUNITY	POPULATION	FLUORIDE CONTENT IN PPM
LOCO HILLS	125	.8
LORDBURG	3,436	3.3
LOS ALAMOS	13,200	.7
LOS CHAVES		.8
LOS LUNAS	1,186	.9
LOS SISNEROS	50	1.3
LOVINGTON	9,660	1.1
MALAGA	50	3.0
MARQUES	35	.8
MAXWELL	392	.7
MAYHILL	100	1.0
MELROSE	698	2.0
MENTMORE	90	1.3
MESILLA	1,264	.8
MONTECITO	64	9.6
MONTICELLO	150	1.6
MORIARTY	720	1.0
MOSQUERO	310	1.2
NAMBE PUEBLO	350	2.4
NASCHITTI	50	1.2
NENAHNEZED		.8
NEW LAGUNA	150	1.3
NEWCOMB	5	1.6
NOGAL	20	1.0
NORTH CLEVELAND	96	.9
NORTH LACUEVA	40	.7
OBAR		1.5
OJITO	10	.9
OJO CALIENTE	204	1.3
OJO ENCINO		.9
ORGAN	110	1.3
PARADISE HILLS		.7
PASTURA	30	.9
PORTALES		7.9
PUEBLO PINTADO		7.9
PUNTA DE AGUA		7.0
QUEMADO	150	2.3
QUESTA	900	1.4
RANCHOS DE TAOS	1,668	.7
RESERVE	300	.9
RIBERA	350	1.9
RINCON	300	5.8
RIO CHIQUITO	56	1.2
ROCK SPRINGS		1.0
RODEO	150	2.6
ROSWELL	42,000	.8
ROWE	350	1.8
ROY	633	1.6

STATE AND COMMUNITY	POPULATION	FLUORIDE CONTENT IN PPM
NEW MEXICO CONT		
DIXON	800	1.1
DULCE	500	1.0
EL ANCON	100	1.2
EL CORUCO	72	1.6
ELIDA	534	6.0
ENCINO	346	2.6
ESPANOLA	1,976	2.4
EUNICE	3,531	1.7
FAIRVIEW	900	1.0
FARLEY	60	1.4
FLOYD	200	4.4
FORT SUMNER	1,809	2.6
GABALDON	5	.7
GALISTEO	125	1.2
GALLUP	14,089	.8
GAMERCO	300	.7
GRADY	100	1.0
GRANTS	10,274	.7
GREENFIELD	100	1.1
GRENVILLE	55	1.5
HACHITA	200	3.7
HAGERMAN	1,144	1.3
HAPPY VALLEY		.8
HATCH	888	.9
HOBBS	28,500	1.4
HOLMAN	250	2.3
HOPE	108	.8
HUERFANO		1.2
HURLEY	1,851	1.1
ILFELD	60	1.5
JAL	3,051	1.0
JEMEZ PUEBLO	900	1.1
KINEBETO		1.3
KTATUM	1,168	1.1
LA HUERTA		1.0
LA LUZ	250	.8
LAGUNA	650	1.5
LAKE ARTHUR	387	1.2
LAKE VALLEY	8	11.0
LAMY	195	.9
LAS GALLINAS	80	.8
LEDOUX	100	.8
LINCOLN	150	.9
LINDRITH	196	1.2
LITTLE WATER	5	1.3
LLANO ABEYTA	200	.8
LLANO CHIMAYO	76	3.4
LLANO QUEMADO	204	3.5

STATE AND COMMUNITY	POPULATION	FLUORIDE CONTENT IN PPM
ILLINOIS CONT		
GRAYSLAKE	3,762	1.0
GRIDLEY	889	.7
GURNEE	1,831	1.0
HAMEL	362	.9
HANNA CITY	1,056	3.0
HANOVER PARK	451	1.1
HECKER	313	3.4
HENDERSON	212	2.2
HERSCHER	658	1.4
HICKORY HILLS	2,707	1.0
HIGHLAND LAKE	392	1.0
HOFFMAN ESTATES	8,296	1.0
HOMWOOD	13,371	.9
IPAVA	623	4.0
ISLAND TRACT DEVELOPMENT	88	1.0
JEFFERSONVILLE	360	.9
JOLIET	66,780	1.1
JOY	503	.8
KANGLEY	267	.7
KEMPTON	252	1.0
KEWANEE	16,324	1.0
KINSMAN	134	.7
KIRKWOOD	771	.9
KNOXVILLE	2,560	1.2
LADD PART	1,255	.7
LAFAYETTE	269	1.4
LAKE VILLA	903	1.0
LAKE ZURICH	3,458	.8
LATHAM	389	.8
LEE	228	.8
LEMON ST. WELL CO.	105	.7
LEMONT	3,397	.7
LEONORE	195	.7
LIBERTYVILLE	8,560	.9
LINCOLNSHIRE	555	1.2
LINDENHURST	1,259	.8
LIVINGSTON	964	.8
LOCKPORT	7,560	1.3
LOMBARD	22,561	.7
LONETREE SUB.	250	1.3
LORAIN	303	1.1
LOSTANT	460	1.0
MAPLETON	309	1.8
MAQUON	386	3.5
MARK	445	1.4
MATHEVILLE	612	1.5
MCCLEAN	758	.7
MELVIN	559	.7

STATE AND COMMUNITY	POPULATION	FLUORIDE CONTENT IN PPM	
ILLINOIS CONT			
MILAN	3,065	.3	1.7
MILLSTADT	1,830	.8	
MILTON	309	.7	
MINERAL	330	.7	.6
MINONK	2,001	2.2	
MINOOKA	539	.9	
MONMOUTH	10,372	2.0	1.6
MONTGOMERY	2,122	1.4	
MOUND CITY	1,669	1.1	
MT. PROSPECT	18,906	1.0	.6
MUNDELEIN	10,526	.7	
NAPLATE	738	.7	
NIANTIC	629	.7	
NORRIS	307	2.0	
NORTH AURORA	2,088	1.1	
NORTH HENDERSON	210	1.9	
NUNDA UTILITY	125	.8	
ODELL	936	1.6	2.5
OGELSBY	4,215	.8	
OLYMPIA FIELDS	1,503	.7	
OMAHA	312	1.2	
ONEIDA	672	1.8	
OPHIEM	100	1.0	
OREGON	3,732	1.2	
OSWEGO	1,510	1.2	
OTTAWA	19,408	.7	
PALATINE	11,504	1.0	
PALOS HEIGHTS	3,775	.9	
PARKERSBURG	253	5.8	
PERU	10,460	.8	
PLAINFIELD	2,183	.9	.6 1.2
PRAIRIE CITY	613	3.0	
PRINCEVILLE	1,281	2.4	
RANSOM	415	.9	
RARITAN	182	2.4	
RAYNOR HILLS	1,144	1.1	
REDDICK	205	1.8	
REYNOLDS	494	.7	
RIDGELAND SUBD		.9	
RIO	177	2.0	
RIVERWOODS	96	1.1	
ROCKDALE	1,272	1.0	1.2
ROLLING MEADOWS	10,879	1.0	
ROSEVILLE PART	1,065	.8	.2
ROUND LAKE	997	1.0	.5
ROUND LAKE BEACH	5,011	1.0	
ROUND LAKE PARK	2,565	1.0	
RUMA	138	.9	1.3

STATE AND COMMUNITY	POPULATION	FLUORIDE CONTENT IN PPM	
NEW JERSEY			
	83,000		
CLAYTON	4,400	1.0	
EAST GREENWICH	3,500	1.0	
ELMER	1,600	.7	
GLASSBORO	13,000	1.2	
HARRISON TWP.	1,200	1.1	
MANTUA-EDENWOOD WC.	2,000	1.0	
MANTUA-MANTUA-WC.	1,500	1.0	
MANTUA-SEWELL WC.	2,200	1.4	
NATIONAL PARK	3,800	.7	
PITMAN	10,000	2.0	
W. DEPT FORD TWP.	13,000	.9	
WASHINGTON TWP-M.U.A.	4,000	.8	
WASHINGTON TWP-F.M.W. CD	1,500	.7	
WENONAH	2,300	1.0	
WOODBURY	16,000	.7	
WOODSTOWN	3,000	1.2	
NEW MEXICO			
	291,396		
ABIQUIU DAM	12	.9	
ACOMA	300	1.0	
ADOBE ACRES		1.1	
ALAMOGORDO	24,000	.9	
ALBUQUERQUE PART	16,200	1.2	
ANAPRA		1.1	
ANCHO	10	.7	
ANTHONY	900	.7	
ANZAC VILLAGE		.9	
ARROYO SECO	50	.7	
ARTESIA	12,000	1.0	
BELÉN	5,031	.8	
BERNALILLO	2,574	.7	
BLUEWATER	700	.9	
BORREGO PASS		.9	
CANONES	90	.9	
CAUSEY	5	1.1	
CERRILLOS	150	.8	
CHAMISAL	300	.7	
CHIMAYO	700	1.4	
CLAYTON	3,312	1.1	
CLOVIS	25,000	2.2	
COLUMBUS	307	7.2	
CORONA	420	1.1	
COSTILLA	300	.8	
COYOTE CANYON	200	1.0	
DEMING	5,764	.8	
DES MOINES	207	1.4	
DEXTER	885	1.1	

STATE AND COMMUNITY POPULATION FLUORIDE CONTENT IN PPM

NEBRASKA CONT

STATE AND COMMUNITY	POPULATION	FLUORIDE CONTENT IN PPM
NORTH PLATTE	17,184	.8
OAKLAND	1,429	1.2
ODELL	358	.7
OGALLALA	4,250	.7
OSHKOSH	1,025	.7
PALISADE	544	.9
PAXTON	566	.7
PONCA	924	1.3
POTTER	554	.8
STOCKVILLE	91	.8
STRATTON	492	1.0
TRENTON	914	1.1
UEHLING	231	1.4
VERDEL	123	1.4
WALTHILL	844	1.0
WAUNETA	794	1.0
WHITNEY	98	1.0
WINNEBAGO	682	1.4

NEVADA

10,641

STATE AND COMMUNITY	POPULATION	FLUORIDE CONTENT IN PPM
BEATTY	1,153	4.0
CALIENTE	792	1.5
FALLON	2,734	1.0
GABBS	770	6.0
GLENDALE	150	2.0
GOLCONDA	150	.8
LOGANDALE	809	2.0
LUNING	78	1.0
MOAPA	432	2.0
OVERTON	1,200	2.0
PANACA	458	2.2
SCHURZ	415	.8
WEED HEIGHTS	1,500	.7

NEW HAMPSHIRE

10,996

STATE AND COMMUNITY	POPULATION	FLUORIDE CONTENT IN PPM
BETHLEHEM-ZELAND RIVER	1,600	.8
CENTER HARBOR-DANE EST	96	.9
EMERALD LAKE SHORES	450	1.2
GORHAM WATER WORKS	3,000	.7
GUILFORD WATER WORKS	300	.9
LINCOLN	1,400	.7
NORTH CONWAY	2,350	.7
WHITEFIELD DISTRICT #2	1,800	1.3

STATE AND COMMUNITY POPULATION FLUORIDE CONTENT IN PPM

ILLINOIS CONT

STATE AND COMMUNITY	POPULATION	FLUORIDE CONTENT IN PPM
RUTLAND	509	.9
SAUK VILLAGE	4,687	.7
SAUNEMIN	392	4.2 1.6
SCHAUMBURG CNT	986	.8
SEATON	235	1.0
SHELDON	1,137	.7
SILVIS	3,973	1.1 .8
SMITHTON	629	1.2
SOUTH WILMINGTON	730	2.0
ST. AUGUSTINE	201	.8
ST. CHARLES	9,269	1.0
STANDARD	282	1.5
STONINGTON	1,076	1.5 .3
TABLE GROVE	500	4.0
THORNTON PART	2,895	.9 .3
TIMEWELL	204	.9
TOLUCA	1,352	2.5
TONICA	750	.7
TOULON	1,213	1.8
TRENTON	1,866	1.0
VARNA	373	.4 1.5 1.2
VERNON HILLS	123	.7
VICTORIA	453	1.6
VIOLA	812	2.0
WATEGA	570	1.9
WENONA	1,005	2.5 .8
WESTERN SPG PART	10,838	.7 .3
WESTFIELD PART	636	1.0 .4
WESTON SUBDIVISION	150	.9
WILLIAMSFIELD	548	2.2 .7
WILMINGTON	4,210	1.1
WINDCREST SUB.	56	2.5
WINTHROP HARBOR	3,848	.9
WOODHULL	779	2.2
WYOMING	1,559	1.8
YATES CITY	802	2.4 .2
YORKVILLE	1,568	1.2 .9
ZION	11,941	1.6 1.0

INDIANA

182,722

STATE AND COMMUNITY	POPULATION	FLUORIDE CONTENT IN PPM
ADVANCE	463	1.2
ALBION	1,325	.8
AUBURN	6,350	.9
AVILLA	919	.9
BERNE	2,644	1.5
BLUFFTON	6,238	1.0
BROWNSBURG	4,478	.7

STATE AND COMMUNITY	POPULATION	FLUORIDE CONTENT IN PPM
INDIANA CONT		
BUNKER HILL	1,049	1.0
BUTLER	2,176	.9
CAMPBELLSBURG	612	.9
CHURUBUSCO	1,284	.9
CLEARWATER UTILITY	890	.8
COLUMBIA CITY	4,803	.8
CUMBERLAND	872	.8
DANVILLE	3,278	1.4
DECATUR	8,327	1.5
DECKER	317	.7
DUNKIRK	3,117	.9
ELBERFIELD	485	.7
ELWOOD	11,793	.8
FAIRMCUNT	3,080	.7
FARMLAND	1,102	1.0
FLOWING WELLS	450	1.0
FOREST HILLS UTILITY	35	.9
FOUNTAIN CITY	833	1.1
FRANCISCO	565	1.0
FRANKFORT	15,302	.8
GARRETT	4,364	.8
GENEVA	1,053	1.2
GLENWOOD	382	.7
GOODLAND	1,202	1.2
GRABILL	495	.8
GREENFIELD	9,049	1.0
HARTFORD CITY	8,053	1.0
JAMESTOWN	827	.9
KIRKLIN	767	.8
LAFONTAINE	779	1.3
LEBANON	9,523	.9
LEINNINGER	200	.9
LINDEN	619	.7
LOWELL	2,270	4.5
LYNN	1,260	1.0
MARENGO	803	1.3
MECCA	560	1.0
MEDARYVILLE	758	1.5
MILLTOWN	793	1.9
MONROE	499	1.3
MONROEVILLE	1,294	1.0
MORRISTOWN	704	.9
NEW SALISBURY	200	1.2
NEW WHITELAND	3,488	1.0
NORTH JUDSON	1,942	.8
ORLEANS	1,659	1.0
OSSIAN	1,108	1.0
PENNVILLE	730	1.2

STATE AND COMMUNITY	POPULATION	FLUORIDE CONTENT IN PPM
NEBRASKA		
	83,971	
ABIE	177	1.1
ALLEN	350	.7
ALLIANCE	7,845	1.1
ALVO	159	1.1
ARAPAHOE	1,084	.9
BARTLEY	309	.9
BEAVER CITY	818	.7
BENKELMAN	1,400	.8
BRULE	370	.7
BURCHARD	132	.9
BUSHNELL	266	.8
BUTTE	526	.7
CAMBRIDGE	1,090	.8
CENTRAL CITY	2,406	.8
CHADRON	5,079	.7
CHAPPELL	1,280	.8
CLARKS	439	.9
CRAWFORD	1,588	.7
CULBERTSON	803	.9
DIX	420	.9
DOUGLASS	197	1.0
EDISON	249	.8
FILLEY	149	.9
GRANT	1,166	.8
HAIGLER	268	.9
HAYES CENTER	283	.9
HEMINGFORD	904	.7
HENRY	138	.8
HERSHEY	504	1.1
HOLBROOK	354	.8
IMPERIAL	1,423	.8
INDIANOLA	754	1.0
JACKSON	224	1.3
JOHNSON	304	.8
KIMBALL	4,384	.9
LEBANON	143	.8
LEIGH	502	1.6
LODGEPOLE	492	.8
LYMAN	626	1.3
MACY	203	1.4
MADRID	271	.7
MASKELL	54	1.5
MCCOOK	8,301	.9
MINATARE	894	.7
MITCHELL	1,920	.7
MORRILL	884	.8
NIOBRARA	736	.8

STATE AND COMMUNITY	POPULATION	FLUORIDE CONTENT IN PPM
MISSOURI CONT		
WARRENTON	2,110	1.3
WENTZVILLE	2,850	.7
WHITEMAN AFB		.8
WRIGHT CITY	730	1.2
MONTANA		
	83,950	
BIRNEY	20	1.7
BROADVIEW	160	1.0
CASCADE	604	.9
CIRCLE	1,117	1.4
CLYDE PARK	253	.9
CULBERTSON	919	.7
DENTON	410	1.2
FAIRFIELD	752	.8
FAIRVIEW	1,006	1.5
FORSYTH	2,032	.7
FORT BENTON	1,887	.8
FROMBERG	367	.9
GALEN	501	.9
GARDINER	650	1.0
GERALDINE	364	3.0
GREAT FALLS	55,357	1.0
HARLOWTON	1,734	1.7
HINGHAM	254	1.5
HOT SPRINGS	585	1.3
JORDAN	557	1.0
JUDITH GAP	185	.9
KEVIN	375	.8
LOMA	125	.8
MOORE	216	1.0
NASHUA	796	.9
OPHEIM	457	1.4
PLEVNA	263	2.0
RICHEY	480	2.8
ROUND BUTTE	350	.8
ROUNDUP	2,842	1.0
RUDYARD	600	1.5
SAND COULEE	300	1.1
SUNBURST	882	.7
THREE FORKS	1,161	.8
TRIDENT	100	.8
VALIER	724	3.5
WEST YELLOWSTONE	620	5.0
WINNETT	360	3.6
WOLF POINT	3,585	.8

STATE AND COMMUNITY	POPULATION	FLUORIDE CONTENT IN PPM
INDIANA CONT		
PIERCETON	1,186	.8
PITTSBORO	826	.9
PLAINFIELD	5,460	1.0
PORTLAND	6,999	1.0
PURITAN UTILITIES	810	1.0
RAMSEY	100	1.6
REDKEY	1,746	1.3
RILEY	248	2.2
ROANOKE	935	1.0
ROYAL CENTER	966	.7
SCHERERVILLE	2,875	1.0
SCHNEIDER	405	.7
SHADED ACRES	200	.8
SHARPESVILLE	663	.7
SHERIDAN	2,165	1.1
SHIRLEY	1,038	1.0
SILVER LAKE	514	1.2
SPURGEON	269	2.0
ST. JOE	499	.7
STAUNTON	490	.7
SUMMITVILLE	1,048	.8
SWAYZEE	863	.9
UNION CITY	4,047	.9
UPLAND	1,999	1.2
VAN BUREN	929	.8
WALTON	1,079	1.1
WATERLOO	1,432	.9
WEST HARISON	341	.7
WEST LEBANON	720	.9
WHEATLAND	614	.7
WHITELAND	1,368	1.3
WINDFALL	1,135	.7
WOODBURY	585	1.8
IOWA		
	276,035	
ACKLEY	1,731	1.0
ADAIR	742	3.3
ALBIA	4,582	1.0
ALTOONA	1,458	1.6
ANKENY	2,964	1.0
ANTHON	681	.9
ARCADIA	437	2.2
BADGER	340	2.1
BEAVER	115	1.1
BLAIRSBURG	287	1.3
BLAIRSTOWN	583	1.8
BLOCKTON	343	.9

STATE AND COMMUNITY	POPULATION	FLUORIDE CONTENT IN PPM			
IOWA CONT					
BONDURANT	574	6.0			
BOXHOLM	250	3.1			
BOYDEN	562	.9	.7	.9	
BRANDON	322	1.5	.8		
BRIGHTON	724	1.4			
BURT	620	.8			
BUSSEY	557	1.1			
CALLENDER	358	1.6			
CASTALIA	216	1.1			
CHARLES CITY	9,964	.8	.8	1.1	1.2
CHESTER	211	.8			
CINCINNATI	583	.7			
CLARE	245	.7			
CLEGHORN	228	.9			
COLLINS	435	4.2			
COLO	574	1.1			
CORALVILLE	2,357	1.0			
CRAWFORDSVILLE	317	.6	1.4		
DANVILLE	579	2.8			
DAVIS CITY	346	2.4			
DAYTON	820	2.7			
DEWITT	3,224	1.1			
DEXTER	670	.4	.4	2.2	
DIKE	630	.8			
DONNELLSON	709	3.0			
DOWS	882	1.6			
DUMONT	719	.7			
DUNCOMBE	355	2.3			
DUNKERTON	507	.8			
DYSART	1,197	1.6			
ELBERON	211	2.0			
ELLSWORTH	493	1.1			
FAIRBANK	650	.6	1.2		
FARNHAMVILLE	409	2.1			
FERGUSON	186	.8			
FORT DODGE	28,399	.8			
FREDERICKSBURG	797	1.4			
GARDEN GROVE	335	2.6			
GARRISON	421	1.6			
GARWIN	546	.8			
GOWRIE	1,127	1.7			
GRAND JUNCTION	949	1.1			
GRANVILLE	381	1.1			
GRINNELL	7,367	1.8			
GRUNDY CENTER	2,403	1.6			
HAMPTON	4,501	1.9	1.2		
HANSELL	168	2.3			
HARCOURT	268	2.6			

STATE AND COMMUNITY	POPULATION	FLUORIDE CONTENT IN PPM	
MISSOURI CONT			
CREIGHTON	200	2.5	
DEEPWATER	703	1.0	
EAST LYNNE	243	.8	
ESSEX	511	1.0	
FARBER	350	2.5	
FULTON	10,911	.8	
GOODMAN	540	.9	
HALLSVILLE	335	1.1	
HARRISBURG	124	1.0	
HAWK POINT	270	.7	
HIGH HILL	173	2.5	
HOUSTONIA	242	.9	
HUGHESVILLE	125	.9	
HUME	335	1.5	
JONESBURG	385	2.5	
KINGSVILLE	150	4.0	
LADDONIA	671	1.1	
LAMONTE	801	1.2	
LANAGAN	275	.7	
LATHROP	1,006	.7	
LEETON	500	.7	
LIBERAL	612	1.4	
MADISON	517	1.2	
MARSTON	631	1.2	
MARTINSBURG	330	1.4	
MEXICO	12,700	.9	
MIDDLETOWN	193	1.8	
MINDENMINES	356	1.6	
MONTGOMERY CITY	1,723	2.0	
MONTROSE	496	2.5	
MOSCOW HILLS	350	2.5	
MOUNDVILLE	136	1.0	
NEVADA	8,500	.7	
NEW FLORENCE	411	2.5	
NOEL	775	1.2	
NORTH NOEL	95	.8	
O'FALLON	3,770	.9	
PINEVILLE	454	.7	
REYNOLDS CO. P.W.D. #1	225	.7	
RICH HILL	1,555	.9	
RUSH HILL	132	1.1	
SCHELL CITY	328	1.0	
SOUTHWEST CITY	504	.7	
ST. PETERS	385	1.9	
STURGEON	615	1.4	
TROY	1,650	2.2	
URICH	387	4.5	
VERNON CO. P.W.D. #1	250	2.8	

STATE AND COMMUNITY POPULATION FLUORIDE CONTENT IN PPM

MINNESOTA CONT

SHELLY 310 .8
 TROSKY 122 1.2
 WALNUT GROVE 886 1.1
 WANDA 160 3.6

MISSISSIPPI 57,730

ARCOLA 580 .8
 BELLEFONTAINE 300 .8
 DOUBLE SPRINGS 300 1.2
 GEORGETOWN 285 .8
 GLEN ALLEN 300 .8
 GREENVILLE 41,502 1.0 1.0 1.0 .6 .5
 HOLLANDALE 2,646 1.0 1.0
 LELAND 6,295 .8 .8
 METCALFE 200 1.2
 MIZE 371 1.1
 MONTICELLO 1,432 2.0 2.0 1.4
 MOUND BAYOU 1,345 .8
 RIVERSIDE 300 .8
 SCOوبا 513 1.6
 SHUQUALAK 550 .9
 STURGIS 358 .8
 WAKE FORREST 300 1.2
 WALTHALL 153 .7

MISSOURI 125,240

ANDERSON 950 .9
 ASHLAND 495 .7
 AUXVASSE 515 .7
 BELLFLOWER 245 .7
 BLAIRSTOWN 160 5.0
 BOONE CO. P.W.D. #1 265 1.1
 BOONE CO. P.W.D. #3 375 1.6
 BOONE CO. P.W.D. #4 400 1.0
 BOONE CO. P.W.D. #6 900 .7
 BOSWORTH 465 1.0
 BRONAUGH 155 3.0
 CARL JUNCTION 1,220 .8
 CEDAR CITY 570 .9
 CENTERVIEW 208 1.6
 CENTRALIA 3,207 1.5
 CHILHOWEE 440 1.2
 CLARK 350 1.6
 CLARKSVILLE 700 .9
 COLUMBIA 49,950 1.1
 CONCORDIA 1,050 3.5

STATE AND COMMUNITY POPULATION FLUORIDE CONTENT IN PPM

IOWA CONT

HARLAN 4,300 1.0
 HARRIS 258 .8
 HEDRICK 762 1.3
 HOLLAND 264 1.3
 HOLSTEIN 1,413 .9
 HOPKINTON 768 1.4
 HUBBARD 806 .9 1.2
 HUXLEY 486 .8
 INDIANOLA 7,062 1.6
 INWOOD 638 .8
 IONIA 265 .8
 KAMRAR 268 1.0
 KEOSAUQUA 1,023 2.2
 KEOTA 1,096 1.4
 KEYSTONE 522 1.6
 KLEMME 615 1.2
 KNOXVILLE 7,817 1.0
 LAPORTE CITY 1,953 1.1
 LARCHWOOD 531 1.0
 LAWLER 532 .8
 LEHIGH 846 2.4
 LEON 2,004 2.9
 LINCOLN 183 2.2
 LINDEN 258 5.5
 LINEVILLE 452 3.0
 LOCKRIDGE 206 1.6
 LOWDEN 641 1.0
 LUTHER 147 .6 3.5
 LYNNVILLE 411 1.0 1.6
 LYTTON 376 1.2
 MADRID 2,286 1.0
 MANSON 1,789 4.0
 MARCUS 1,307 1.2
 MASON CITY 30,642 .7
 MAXWELL 773 1.3 .8
 MCCALLSBURG 272 2.4
 MELBOURNE 517 1.7
 MERIDEN 192 .9
 MESERVEY 331 1.6
 MONROE 1,366 .8
 MOORLAND 281 .9
 MORNING SUN 875 2.9
 MOULTON 773 2.9
 MOUNT PLEASANT 7,339 1.6
 NEVADA 4,227 1.6
 NEW HAMPTON 3,456 .8
 NEW LONDON 1,694 1.5
 NEW PROVIDENCE 206 2.2

STATE AND COMMUNITY	POPULATION	FLUORIDE CONTENT IN PPM			
IOWA CONT					
NEWHALL	495	.8			
NORA SPRINGS	1,257	1.0			
NORTH ENGLISH	1,004	1.2			
OAKLAND	1,340	1.0			
ODEBOLT	1,331	1.7			
OELWEIN	8,282	.2	.2	1.0	1.0
OTHO	593	2.1			
OTTOSEN	92	1.0			
PARKERSBURG	1,468	.8			
PARNELL	200	1.5			
PILOT MOUND	196	.3	1.7		
PLEASANTVILLE	1,025	1.4			
PROTIVIN	302	1.3			
RANDALL	201	2.2			
REINBECK	1,621	1.6			
RICHLAND	546	1.2			
ROCKWELL	772	2.6	2.0		
ROCKWELL CITY	2,313	1.1			
ROLAND	748	1.6			
RUNNELLS	322	1.0			
RUSSELL	577	3.4			
SALEM	442	3.0	.9		
SEARSBORO	165	.8			
SERGEANT BLUFF	813	1.8			
SHELLSBURG	625	1.4			
SPILLVILLE	389	.4	1.3		
STANHOPE	461	2.2			
STORY CITY	1,773	1.8			
STOUT	145	.8			
STRATFORD	703	2.5			
STUART	1,486	2.6	.3	1.8	
SULLY	508	1.6			
SUMNER	2,170	.7	1.1		
THORNTON	449	1.8			
TITONKA	647	.8			
TRAEER	1,623	.7			
URBANA	544	.8			
VAN HORNE	554	2.3			
VARINA	162	1.9			
VINTON	4,781	1.2			
W. DES MOINES MAIN OPT	11,949	1.0			
WALNUT	777	3.0			
WASHINGTON	6,037	1.2			
WAUKEE	687	3.0			
WAVERLY	6,357	1.7	1.8	.2	.2
WAYLAND	597	1.5			
WEBSTER CITY	8,520	.9			
WELLMAN	1,085	1.4			

STATE AND COMMUNITY	POPULATION	FLUORIDE CONTENT IN PPM	
MICHIGAN CONT			
CASS CITY	1,987	.7	
CHEBOYGAN	6,000	.8	
CLIO	2,212	.8	
CLYDE TWP	150	1.6	
COLUMBIAVILLE	789	1.1	
CORUNNA	2,800	1.0	
DAVIDSON	3,761	.8	
DRYDEN	476	1.0	
FARMINGTON TWP PART	1,275	1.0	
FLINT TWP	300	1.0	
FORD RIVER TWP	100	.7	
FOWLER	854	.9	
FRASER	12,300	1.2	
FREELAND	900	.7	
GAGETOWN	400	1.0	
GARDEN	400	1.3	
GENESEE & MT. MORRIS TWP	40	.9	
GRAND BLANC TWP PART	640	.8	
INDEPENDENCE TWP PART	410	.9	
LA SALLE TWP	190	2.0	
MEMPHIS	1,060	1.0	
MINDEN CITY	375	1.3	
MORENCI	2,100	.8	
NEW LOTHROP	525	.9	
NILES TWP	1,200	.7	
ONTONAGON	2,358	1.0	
OTISVILLE	701	1.0	
PALMYRA TWP	200	1.1	
PECK	640	.7	
PENTWATER	1,100	.8	
PETERSBURG	1,300	1.1	
PORT AUSTIN	706	1.0	
RICHMOND	2,025	.9	
SOUTH HAMPTON SUB	120	.7	
SOUTHFIELD PART	175	.9	
UNIONVILLE	620	.9	
WILDWOOD SUB	320	.7	
MINNESOTA		3,813	
BELVIEW	400	1.0	
CAMPBELL	365	1.1	
HANLEY FALLS	334	.8	
HENDRUM	305	1.2	
MILROY	268	1.9	
PRINSBERG	462	1.9	2.6
REVERE	201	.9	
ROSELAND		.8	

STATE AND COMMUNITY	POPULATION	FLUORIDE CONTENT IN PPM
MAINE	712	
NEW SHARON	712	1.8
MARYLAND	32,811	
CAMBRIDGE	12,200	1.0
CRISFIELD	5,000	3.9
EASTON	6,400	1.0
EWELL	450	1.8
FORD HEIGHTS	80	1.0
FRENCHTOWN	65	4.5
GLYMONT CREST	16	.9
GREEN MEADOWS	150	.9
HAWTHORNE	50	1.6
INDIAN HEAD	800	.7
INDIAN HEAD MANOR	320	1.0
JENKINS LANE	160	1.0
LA PLATA	1,500	1.3
MT CARMEL WOODS	100	.8
N INDIAN HEAD ESTATES	1,500	.9
NEWTON WC	50	1.4
POMFRET ESTATES	40	1.3
POTOMAC HEIGHTS	2,700	.9
QUIET ACRES	50	1.1
RED HILL ESTATES	125	1.0
RHODES POINT	150	1.7
RUMBLEY	150	4.1
SECRETARY	400	1.0
STRAWBERRY HILLS	100	.8
TEATES SUPPLY	125	1.0
TYLERTON	130	2.4
MASSACHUSETTS		
NONE		
MICHIGAN	95,965	
ADDISON	960	.7
AKRON	450	1.6
ARMADA	961	.9
BEDFORD TWP	650	1.1
BRIDGEPORT TWP	5,000	1.3
BRITTON	750	1.2
BROWN CITY	1,050	1.2
BURTON TWP	29,700	1.0
CAPAC PART	1,235	1.1
CARD	3,700	.7

STATE AND COMMUNITY	POPULATION	FLUORIDE CONTENT IN PPM
IOWA CONT		
WELLSBURG	827	1.4
WESLEY	514	.9
WEST BURLINGTON	2,560	2.1
WEST LIBERTY	2,042	1.4
WEST POINT	768	2.4
WILLIAMS	490	1.2
WINFIELD	862	1.5
KANSAS	139,957	
ARCADIA	450	.8
ARMA	1,500	.7
ATWOOD	1,800	1.3
BIRD CITY	700	1.4
BREWSTER	353	1.6
BURDETT	360	1.6
BURNS	300	2.0
CAPALDO	125	.8
CHEROKEE	825	.8
CHEROKEE RWD #1	275	.7
CIRCLEVILLE	173	.8
COLBY	4,700	1.5
COLUMBUS	3,700	1.3
COOLIDGE	120	.8
CRAWFORD RWD #3	300	1.4
CRAWFORD RWD #4	780	.7
CRAWFORD RWD #2	400	2.4
DAMAR	360	.7
DEERFIELD	471	1.0
DERBY	7,719	.7
DIGHTON	1,750	3.2
DODGE CITY	14,700	1.0
ELLINWOOD	2,852	.7
FOWLER	735	.7
GARDEN CITY	15,200	.7
GIRARD	2,600	.8
GOODLAND	6,000	1.4
GRAINFIELD	410	1.1
GREAT BEND	18,244	.7
GRINNELL	450	.9
HANSTON	310	.7
HERNDON	300	.7
HILL CITY	2,330	.7
HILLSBORO	2,638	.8
HOLCOMB	290	.8
HOXIE	1,350	1.1
JOHNSON CITY	1,154	1.0
KANORADO	224	1.3

STATE AND COMMUNITY	POPULATION	FLUORIDE CONTENT IN PPM
KANSAS CONT		
KISMET	300	.7
LAKIN	1,525	1.1
LANE RWD #1	245	2.2
LARNED	5,200	.7
LATHAM	150	1.3
LEOTI	2,000	1.3
LIEBENTHAL	175	4.0
MAHASKA	160	1.2
MANTER	185	1.0
MCCRACKEN	480	.7
MCCUNE	421	1.4
MCDONALD	311	1.6
MEADE	2,150	.7
MELVERN	425	2.4
MOSCOW	237	1.2
MULBERRY	750	.7
NARKA	140	1.2
NESS CITY	2,050	.7
NICKERSON	1,239	.7
OFFERLE	233	1.1
OLMITZ	160	1.9
OSAGE RWD #2	150	.9
OSAGE RWD #4	350	.9
OVERBROOK	667	.7
PARADISE	161	.7
PLAINS	902	.8
QUINTER	900	.7
REXFORD	254	1.8
ROSEHILL	431	.8
SATANTA	1,178	1.1
SCAMMON	550	.7
SCOTT CITY	4,297	1.9
SELDEN	345	1.1
SHARON SPRINGS	1,137	.9
SPEARVILLE	742	1.0
ST. FRANCIS	1,837	1.4
STERLING	2,000	1.0
SUBLETTE	1,339	.7
SUMMERFIELD	287	1.2
SUSANK	70	2.8
TRIBUNE	1,200	1.0
ULYSSES	3,965	1.7
WALLACE	120	1.1
WALLACE RWD #1	210	.8
WALNUT	355	1.9
WEIR	751	.7
WEST MINERAL	275	1.3

STATE AND COMMUNITY	POPULATION	FLUORIDE CONTENT IN PPM
KENTUCKY		
	14,220	
BEAVER DAM	1,648	1.2
EKRON	205	1.1
GEORGETOWN	9,000	.9
IRVINGTON	1,190	.8
PARK CITY	625	1.0
SALEM	480	.7
WHITE PLAINS WD.	359	1.1
WHITESVILLE	713	.9
LOUISIANA		
	98,377	
ALEXANDRIA	50,000	1.2
ANACOCO		
BAKER	8,000	.7
BENTON	1,600	3.1
BOYCE	1,150	
BROWN HEIGHTS SUB.		
BUNKIE	5,500	3.0 8.0
CELLINSTON		
CHARMINGDALE SUB.	120	
CHENEYVILLE	1,050	.9
CLARKS	1,000	
CONVERSE	311	1.4
EVERGREEN		
FARMERVILLE BLENDED	2,700	1.0
FRANKLINTON	4,000	.8
IDA		
KINDER	2,300	2.0
LAKE PROVIDENCE	5,400	1.0
LAKWOOD SUB.	120	
MAMOU	3,250	
MANY	4,000	.8
MARINGOUIN		
MER ROUGE	900	1.0
NOBLE		
NORTH MONROE SUB.	450	
NORTH PARK VILLAGE	200	
PLAIN DEALING	1,400	2.4
SABINE		
SOUTH BROADMOOR SUB.		
SOUTHEAST HAMMOND W C	1,000	
STERLINGTON	500	
TANGLEWOOD SUB.		
TREASURE ISLAND SUB	100	
VENTRESS	1,826	
ZACHARY		
ZWOLLE BLENDED	1,500	1.0

