

Supplementary Table 1. Missing Data

| <b>Filtered First<br/>(N=21)</b> | T1, V1<br>(N=21) | T1, V2<br>(N=21) | T2, V1<br>(N=17) | T2, V2<br>(N=17) |
|----------------------------------|------------------|------------------|------------------|------------------|
| mCEQ                             | 0                | 0                | 4 <sup>a</sup>   | 0                |
| Smoking<br>Perceptions           | 0                | 0                | 4 <sup>a</sup>   | 0                |
| CPD                              | 0                | 0                | 4 <sup>a</sup>   | 0                |
| Cotinine                         | 0                | 0                | 4 <sup>a</sup>   | 4 <sup>b</sup>   |
| Quit intention                   | 0                | 0                | 4 <sup>a</sup>   | 0                |
| FTND                             | 0                | 0                | 4 <sup>a</sup>   | 0                |

| <b>Unfiltered First<br/>(N=22)</b> | T1, V1<br>(N=21)                | T1, V2<br>(N=21) | T2, V1<br>(N=20) | T2, V2<br>(N=19)                |
|------------------------------------|---------------------------------|------------------|------------------|---------------------------------|
| mCEQ                               | 1 <sup>ac</sup>                 | 0                | 1 <sup>ac</sup>  | 1 <sup>ac</sup>                 |
| Smoking<br>Perceptions             | 1 <sup>ac</sup>                 | 0                | 1 <sup>ac</sup>  | 1 <sup>ac</sup>                 |
| CPD                                | 1 <sup>ac</sup>                 | 0                | 1 <sup>ac</sup>  | 1 <sup>ac</sup>                 |
| Cotinine                           | 1 <sup>ac</sup> ,1 <sup>b</sup> | 0                | 1 <sup>ac</sup>  | 1 <sup>ac</sup> ,4 <sup>b</sup> |
| Quit intention                     | 1 <sup>ac</sup>                 | 0                | 1 <sup>ac</sup>  | 1 <sup>ac</sup>                 |
| FTND                               | 1 <sup>ac</sup>                 | 0                | 1 <sup>ac</sup>  | 1 <sup>ac</sup>                 |

<sup>a</sup>due to drop-out/loss to follow-up/withdrawal; <sup>b</sup>due to COVID protocol adaptation; <sup>c</sup>unique participant

Supplemental Table 2. Study Participant Demographics and Baseline Characteristics

| Demographic/Characteristic                           | Total<br>N =43 | Filtered<br>First<br>N = 21 | Unfiltered First<br>N = 22 |
|--|----------------|-----------------------------|----------------------------|
|  | n (%)          | n (%)                       | n (%)                      |
| Age, Mean (SD)                                       | 36.7 (9.9)     | 36.6 (10.6)                 | 36.9 (9.5)                 |
| Sex  |                |                             |                            |
| Female   | 18 (41.9)      | 9 (42.9)                    | 9 (40.9)                   |
| Male   | 25 (58.1)      | 12 (57.1)                   | 13 (59.1)                  |
| Ethnicity  |                |                             |                            |
| Not Hispanic / Latino                                | 35 (81.4)      | 17 (81.0)                   | 18 (81.8)                  |
| Hispanic/Latino                                      | 8 (18.6)       | 4 (19.0)                    | 4 (18.2)                   |
| Mexican  | 5 (11.6)       | 2 (9.5)                     | 3 (13.6)                   |
| Puerto Rican   | 2 (4.7)        | 1 (4.8)                     | 1 (4.6)                    |
| Another Hispanic / Latino origin                     | 1 (2.3)        | 1 (4.8)                     | 0                          |
| Race   |                |                             |                            |
| White  | 30 (69.8)      | 15 (71.4)                   | 15 (68.2)                  |
| Multiple races                                       | 5 (11.6)       | 2 (9.5)                     | 3 (13.6)                   |
| Asian American                                       | 3 (7.0)        | 1 (4.8)                     | 2 (9.1)                    |
| African American                                     | 2 (4.7)        | 2 (9.5)                     | 0                          |
| Native Hawaiian or Other Pacific Islander            | 0              | 0                           | 0                          |
| American Indian or Alaska Native                     | 0              | 0                           | 0                          |
| Unknown  | 3 (7.0)        | 1 (4.8)                     | 2 (9.1)                    |
| Education  |                |                             |                            |
| High school or below                                 | 11 (25.6)      | 8 (38.1)                    | 3 (13.6)                   |
| Some college or technical school                     | 21 (48.8)      | 7 (33.3)                    | 14 (63.6)                  |
| College graduate or above                            | 11 (25.6)      | 6 (28.6)                    | 5 (22.7)                   |
| Income (in \$1000s), Mean (SD)                       | 38.7 (35.4)    | 36.5 (30.4)                 | 41.8 (41.0)                |
| # years smoked cigarettes, Mean (SD)                 | 17.19 (9.6)    | 17.86 (10.0)                | 16.55 (9.4)                |
| # days smoked in past 30 days, Mean (SD)             | 30.00 (0.0)    | 30.00 (0.0)                 | 30.00 (0.0)                |
| # cigarettes smoked per day, past 30 days, Mean (SD) | 14.51 (6.7)    | 12.10 (5.6)                 | 16.82 (7.0)                |

Supplemental Table 3. Full Model: mCEQ questionnaire

| Predictors            | SS        |              |        | PR        |              |        | AV        |               |              | EN        |               |              | CR        |               |              |
|-----------------------|-----------|--------------|--------|-----------|--------------|--------|-----------|---------------|--------------|-----------|---------------|--------------|-----------|---------------|--------------|
|                       | Estimates | CI           | p      | Estimates | CI           | p      | Estimates | CI            | p            | Estimates | CI            | p            | Estimates | CI            | p            |
| (Intercept)           | 3.50      | 2.97 – 4.03  | <0.001 | 3.34      | 2.76 – 3.92  | <0.001 | 1.99      | 1.41 – 2.57   | <0.001       | 3.60      | 3.03 – 4.18   | <0.001       | 4.12      | 3.50 – 4.73   | <0.001       |
| Treatment<br>[F v. U] | 0.56      | 0.32 – 0.81  | <0.001 | 0.15      | -0.06 – 0.37 | 0.159  | -0.28     | -0.52 – -0.03 | <b>0.029</b> | 0.52      | 0.25 – 0.80   | <0.001       | -0.38     | -0.70 – -0.06 | <b>0.020</b> |
| Arm<br>[FU v. UF]     | -0.12     | -0.67 – 0.42 | 0.651  | -0.31     | -0.95 – 0.33 | 0.330  | -0.02     | -0.64 – 0.60  | 0.948        | -0.25     | -0.83 – 0.32  | 0.382        | 0.21      | -0.37 – 0.78  | 0.478        |
| Visit                 | -0.08     | -0.17 – 0.01 | 0.085  | -0.07     | -0.15 – 0.01 | 0.073  | 0.01      | -0.08 – 0.11  | 0.782        | -0.12     | -0.22 – -0.01 | <b>0.028</b> | -0.16     | -0.28 – -0.04 | <b>0.011</b> |
| Sequence              | 0.24      | -0.17 – 0.65 | 0.255  | 0.16      | -0.20 – 0.52 | 0.385  | 0.01      | -0.40 – 0.43  | 0.958        | 0.18      | -0.29 – 0.64  | 0.453        | 0.73      | 0.20 – 1.27   | <b>0.008</b> |

|                 |       |              |       |      |              |       |      |              |       |       |              |       |      |              |       |
|-----------------|-------|--------------|-------|------|--------------|-------|------|--------------|-------|-------|--------------|-------|------|--------------|-------|
| Sex<br>[F v. M] | -0.05 | -0.60 – 0.50 | 0.857 | 0.08 | -0.57 – 0.72 | 0.813 | 0.28 | -0.34 – 0.91 | 0.361 | -0.21 | -0.79 – 0.38 | 0.477 | 0.52 | -0.06 – 1.11 | 0.078 |
|-----------------|-------|--------------|-------|------|--------------|-------|------|--------------|-------|-------|--------------|-------|------|--------------|-------|

**Random Effects**

|             |                    |  |                    |  |                    |  |                    |  |                    |
|-------------|--------------------|--|--------------------|--|--------------------|--|--------------------|--|--------------------|
| $\sigma^2$  | 0.63               |  | 0.49               |  | 0.65               |  | 0.81               |  | 1.10               |
| $\tau_{00}$ | 0.69 <sub>ID</sub> |  | 1.00 <sub>ID</sub> |  | 0.90 <sub>ID</sub> |  | 0.76 <sub>ID</sub> |  | 0.72 <sub>ID</sub> |
| ICC         | 0.52               |  | 0.67               |  | 0.58               |  | 0.48               |  | 0.40               |
| N           | 43 <sub>ID</sub>   |  | 43 <sub>ID</sub>   |  | 43 <sub>ID</sub>   |  | 43 <sub>ID</sub>   |  | 43 <sub>ID</sub>   |

---

|                |       |  |       |  |       |  |       |  |       |
|----------------|-------|--|-------|--|-------|--|-------|--|-------|
| Observations   | 317   |  | 317   |  | 317   |  | 317   |  | 317   |
| R <sup>2</sup> | 0.552 |  | 0.680 |  | 0.590 |  | 0.526 |  | 0.432 |

Note. SS=smoking satisfaction; PR=psychological rewards, AV=aversion, EN=enjoyment of respiratory tract sensation; CR=craving

Supplemental Table 4. Full Model: Single-Item Perceptions Questionnaire

| <i>Predictors</i>     | <b>Addiction</b> |                |          | <b>Taste</b>     |                |          | <b>Harshness</b> |                 |          | <b>Draw</b>      |               |          | <b>Potency</b>   |                |          |
|-----------------------|------------------|----------------|----------|------------------|----------------|----------|------------------|-----------------|----------|------------------|---------------|----------|------------------|----------------|----------|
|                       | <i>Estimates</i> | <i>CI</i>      | <i>p</i> | <i>Estimates</i> | <i>CI</i>      | <i>p</i> | <i>Estimates</i> | <i>CI</i>       | <i>p</i> | <i>Estimates</i> | <i>CI</i>     | <i>p</i> | <i>Estimates</i> | <i>CI</i>      | <i>p</i> |
| (Intercept)           | 72.87            | 62.22 – 83.51  | <0.001   | 39.50            | 27.77 – 51.22  | <0.001   | 63.59            | 53.49 – 73.68   | <0.001   | 65.83            | 54.42 – 77.25 | <0.001   | 51.70            | 38.53 – 64.87  | <0.001   |
| Treatment<br>[F v. U] | 0.95             | -2.29 – 4.18   | 0.565    | 13.33            | 8.41 – 18.26   | <0.001   | -21.25           | -27.00 – -15.50 | <0.001   | -5.10            | -11.68 – 1.48 | 0.128    | -14.83           | -19.81 – -9.84 | <0.001   |
| ARM<br>[FU v. UF]     | -0.65            | -12.84 – 11.55 | 0.915    | -1.36            | -13.82 – 11.11 | 0.827    | 3.65             | -5.28 – 12.57   | 0.414    | 1.94             | -7.94 – 11.83 | 0.693    | 7.22             | -7.20 – 21.65  | 0.318    |
| Visit                 | -0.43            | -1.65 – 0.79   | 0.484    | -1.52            | -3.37 – 0.32   | 0.105    | 2.58             | 0.41 – 4.75     | 0.020    | -1.96            | -4.45 – 0.52  | 0.120    | -0.09            | -1.97 – 1.79   | 0.927    |
| Sequence              | -0.15            | -5.59 – 5.29   | 0.957    | 6.39             | -1.86 – 14.63  | 0.128    | -8.39            | -18.06 – 1.29   | 0.089    | 8.04             | -3.06 – 19.14 | 0.155    | 1.90             | -6.49 – 10.28  | 0.656    |

|                       |                      |               |       |                      |               |       |                      |               |       |                      |               |       |                      |               |       |
|-----------------------|----------------------|---------------|-------|----------------------|---------------|-------|----------------------|---------------|-------|----------------------|---------------|-------|----------------------|---------------|-------|
| Sex<br>[F v. M]       | 4.78                 | -7.57 – 17.13 | 0.439 | 4.10                 | -8.52 – 16.71 | 0.515 | 2.95                 | -6.07 – 11.97 | 0.512 | -0.65                | -10.64 – 9.34 | 0.896 | 13.87                | -0.74 – 28.47 | 0.062 |
| <b>Random Effects</b> |                      |               |       |                      |               |       |                      |               |       |                      |               |       |                      |               |       |
| $\sigma^2$            | 111.93               |               |       | 256.65               |               |       | 355.66               |               |       | 464.82               |               |       | 266.02               |               |       |
| $\tau_{00}$           | 374.46 <sub>ID</sub> |               |       | 370.83 <sub>ID</sub> |               |       | 158.15 <sub>ID</sub> |               |       | 188.86 <sub>ID</sub> |               |       | 508.02 <sub>ID</sub> |               |       |
| ICC                   | 0.77                 |               |       | 0.59                 |               |       | 0.31                 |               |       | 0.29                 |               |       | 0.66                 |               |       |
| N                     | 43 <sub>ID</sub>     |               |       | 43 <sub>ID</sub>     |               |       | 43 <sub>ID</sub>     |               |       | 43 <sub>ID</sub>     |               |       | 43 <sub>ID</sub>     |               |       |
| Observations          | 317                  |               |       | 316                  |               |       | 317                  |               |       | 311                  |               |       | 317                  |               |       |
| R <sup>2</sup>        | 0.773                |               |       | 0.620                |               |       | 0.442                |               |       | 0.295                |               |       | 0.697                |               |       |

Note. Linear mixed-effects model fit by REML with Arm, Visit, Sequence, Treatment and Sex as fixed effects; ID as random effect

Supplemental Table 5: Full Model: Fagerstrom Test of Nicotine Dependence (FTND)

| <i>Predictors</i>      | <b>Score</b>     |               |                  |
|------------------------|------------------|---------------|------------------|
|                        | <i>Estimates</i> | <i>CI</i>     | <i>p</i>         |
| (Intercept)            | 6.72             | 4.96 – 8.47   | <b>&lt;0.001</b> |
| Treatment [F v. U]     | 0.15             | -0.22 – 0.52  | 0.421            |
| Arm [FU v. UF]         | -0.59            | -1.29 – 0.11  | 0.094            |
| Visit                  | -0.13            | -0.27 – 0.00  | 0.058            |
| Sequence               | -0.81            | -1.43 – -0.20 | <b>0.010</b>     |
| Sex [F v. M]           | 0.81             | 0.11 – 1.52   | <b>0.025</b>     |
| <b>Random Effects</b>  |                  |               |                  |
| $\sigma^2$             | 1.45             |               |                  |
| $\tau_{00 \text{ ID}}$ | 1.07             |               |                  |
| ICC                    | 0.42             |               |                  |
| $N_{\text{ID}}$        | 43               |               |                  |
| Observations           | 317              |               |                  |
| $R^2$                  | 0.486            |               |                  |

Footnote. The FTND scale ranges from 0-10 with a higher score indicative of greater nicotine dependence. Model fit using REML with participant ID as a random effect, arm, treatment, visit, condition and sex as fixed effects, compound symmetry correlation structure and degrees of freedom for the factor t-tests were estimated using the Satterthwaite approximation.



Supplemental Table 6. Full Model: Cigarettes smoked per day

| <b>Cigarettes</b>      |                  |               |                  |
|------------------------|------------------|---------------|------------------|
| <i>Predictors</i>      | <i>Estimates</i> | <i>CI</i>     | <i>p</i>         |
| (Intercept)            | 15.59            | 12.87 – 18.32 | <b>&lt;0.001</b> |
| Treatment [F v. U]     | 0.66             | 0.01 – 1.30   | <b>0.047</b>     |
| Arm [FU v. UF]         | -3.45            | -6.66 – -0.23 | <b>0.037</b>     |
| Visit                  | -0.36            | -0.60 – -0.12 | <b>0.004</b>     |
| Sequence               | 0.47             | -0.62 – 1.55  | 0.396            |
| Sex [F v. M]           | -1.62            | -4.88 – 1.64  | 0.321            |
| <b>Random Effects</b>  |                  |               |                  |
| $\sigma^2$             | 4.41             |               |                  |
| $\tau_{00 \text{ ID}}$ | 26.58            |               |                  |
| ICC                    | 0.86             |               |                  |
| $N_{\text{ID}}$        | 43               |               |                  |
| Observations           | 314              |               |                  |
| $R^2$                  | 0.875            |               |                  |

Footnote. Model fit using REML with participant ID as a random effect, arm, treatment, visit, condition and sex as fixed effects, compound symmetry correlation structure and degrees of freedom for the factor t-tests were estimated using the Satterthwaite approximation

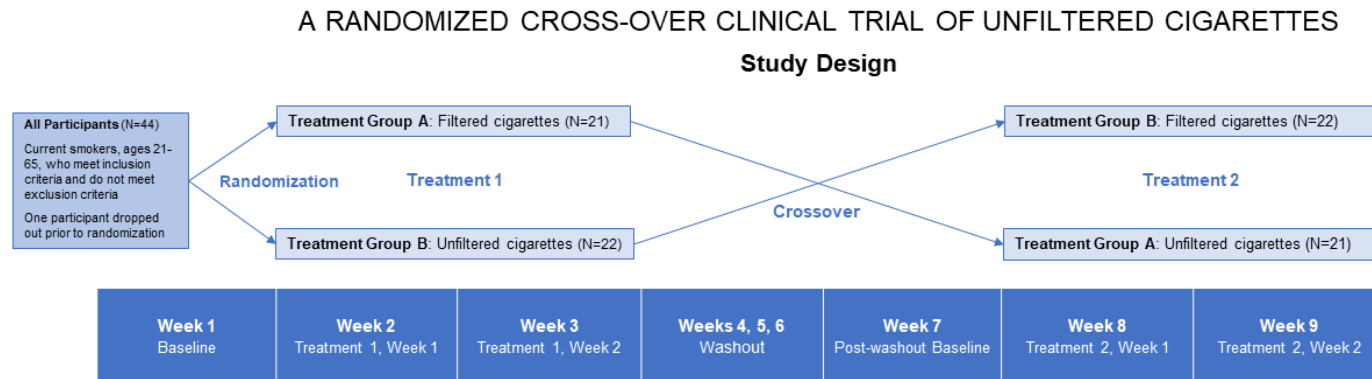
Supplemental Table 7: Ordinal Logistic Regression Model for Quit Intention

| Predictor               | Odds Ratio | 95% CI       | Chi-Square | P-value |
|-------------------------|------------|--------------|------------|---------|
| Treatment (F v. U)      | 0.96       | 0.56 - 1.66  | 0.02       | 0.89    |
| Arm (FU v. UF)          | 4.62       | 1.48 - 14.47 | 6.91       | 0.01    |
| Visit                   | 1.38       | 1.08 - 1.78  | 6.49       | 0.01    |
| Sequence                | 0.59       | 0.25 - 1.39  | 1.45       | 0.23    |
| Sex (F v. M)            | 1.89       | 0.62 - 5.78  | 1.23       | 0.26    |
| Quit intention $\geq 3$ | 0.01       | 0.00 - 0.07  | -4.74*     | <0.01   |
| Quit intention $\geq 2$ | 0.09       | 0.02 - 0.40  | -3.15*     | <0.01   |
| Quit intention $\geq 1$ | 5.82       | 1.39 - 24.46 | 2.41*      | 0.02    |

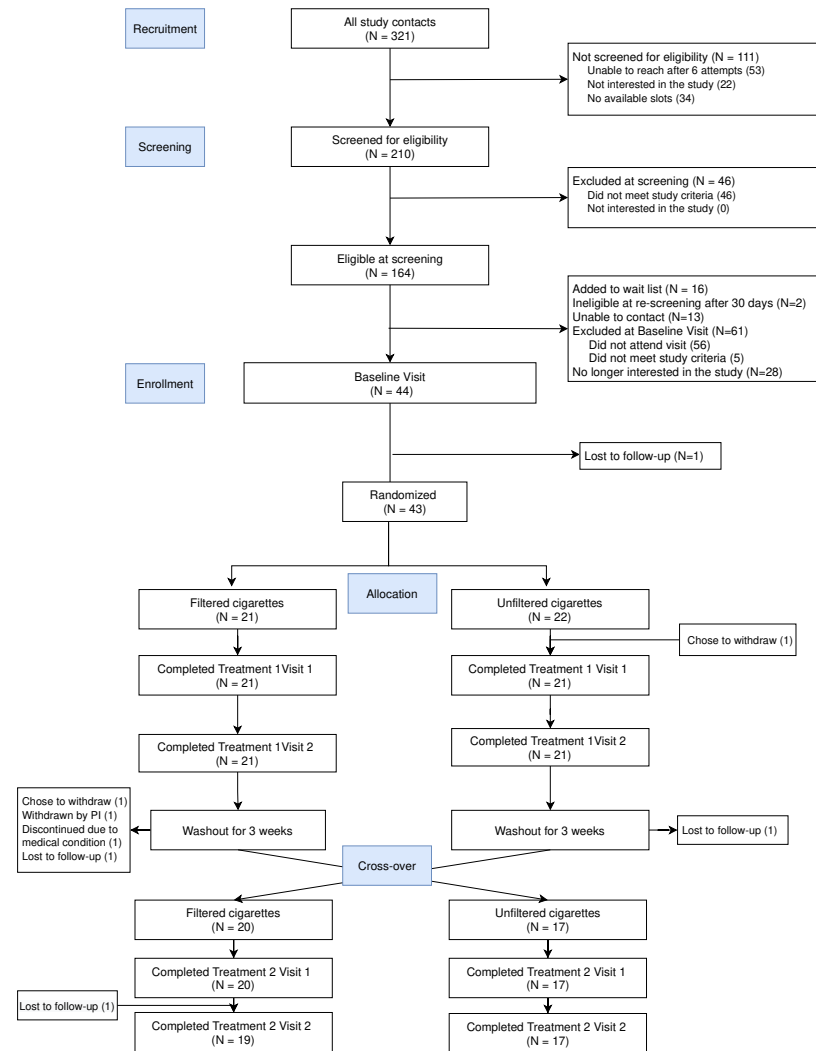
The quit intention scale ranges from 1-4 with a higher score indicative of more immediate intention to quit. The ordinal logistic regression is modeling the probabilities of a lower score.

\*Z score from GEE

Supplemental Figure 1. Trial Design



Supplemental Figure 2. CONSORT Diagram of Participant Flow Through Trial



Supplemental Figure 3. Modified Cigarette Evaluation Questionnaire (mCEQ) Model Results

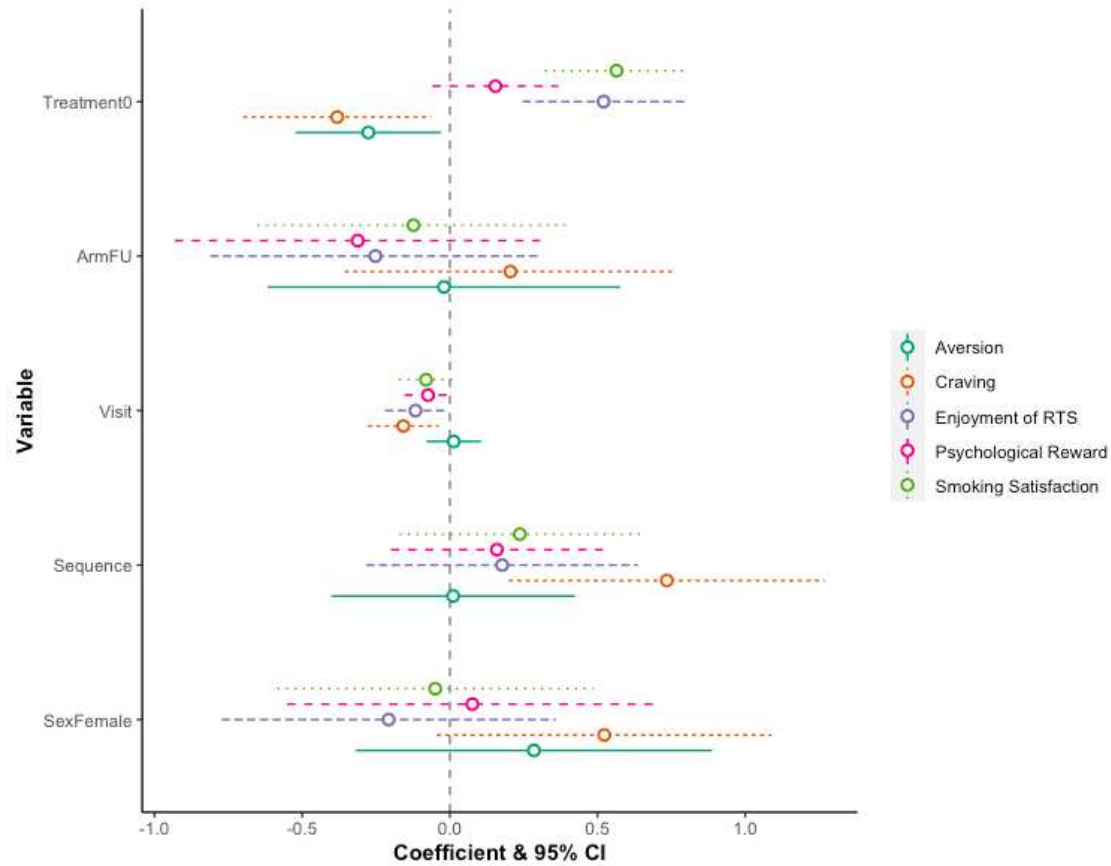


Figure Footnote: The figure displays the estimated coefficients and 95% confidence intervals from the linear mixed effects models for each of the five mCEQ domains. The 'Treatment0' variable corresponds to the comparison between filtered and unfiltered smoking status.

Supplemental Figure 4. Cigarette Perception Question Model Results

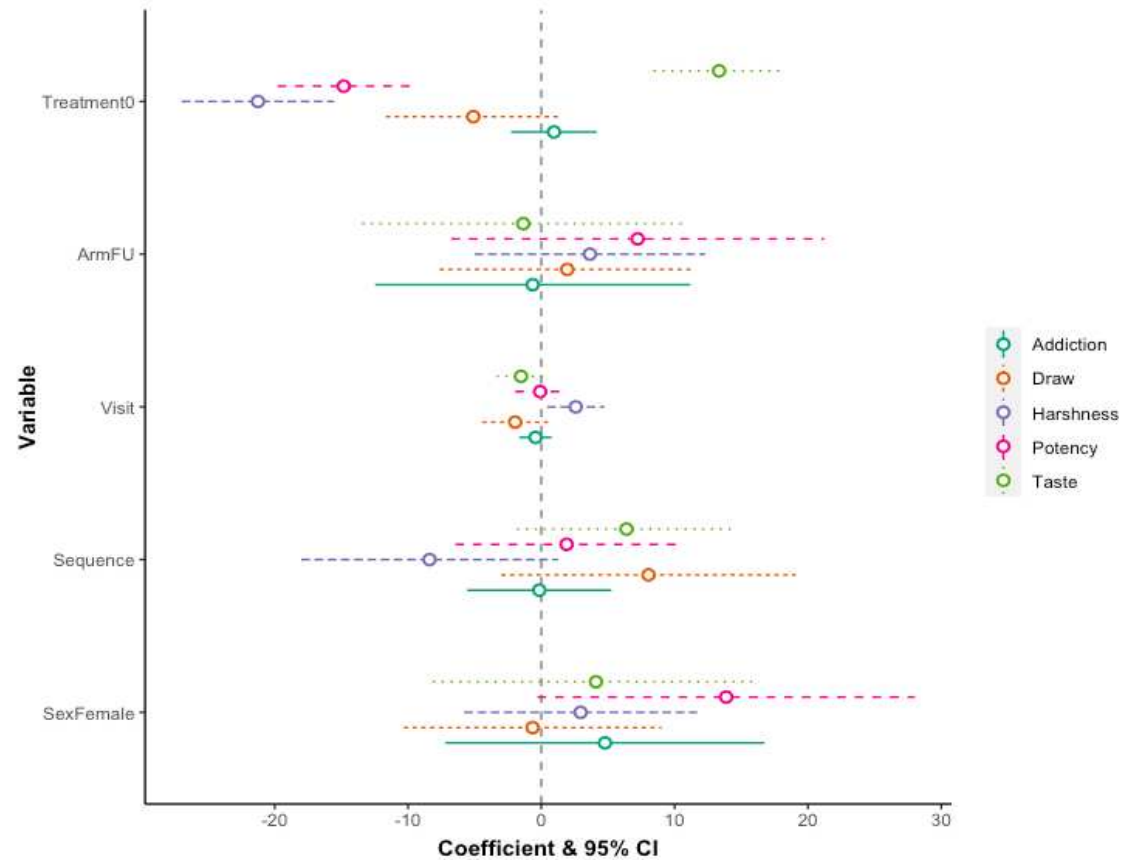


Figure Footnote: The figure displays the estimated coefficients and 95% confidence intervals from the linear mixed effects models for each of the five perception questions. The 'Treatment0' variable corresponds to the comparison between filtered and unfiltered smoking status.

Supplemental Figure 5. Model Results for Cigarette Consumption and FTND

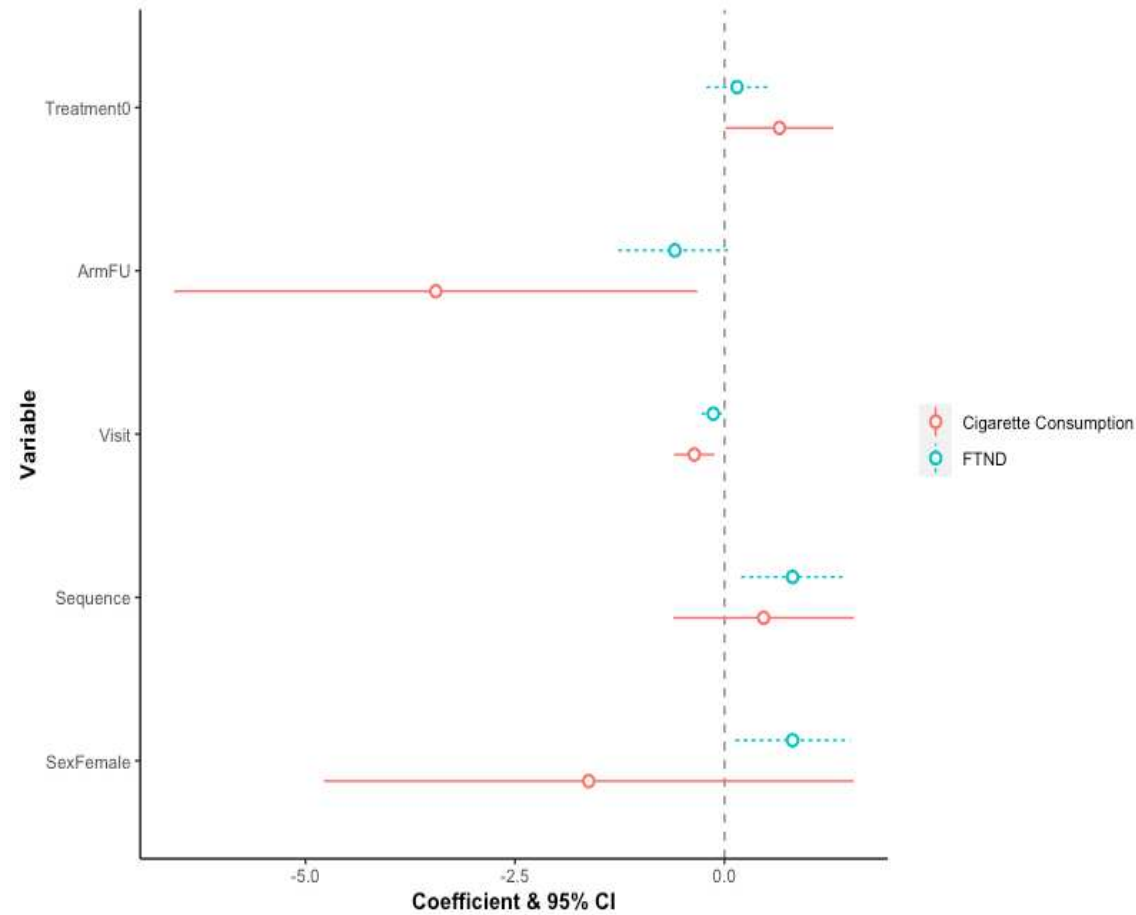


Figure Footnote: The figure displays the estimated coefficients and 95% confidence intervals from the linear mixed effects models for the cigarette consumption and FTND questionnaires. The 'Treatment0' variable corresponds to the comparison between filtered and unfiltered smoking status.