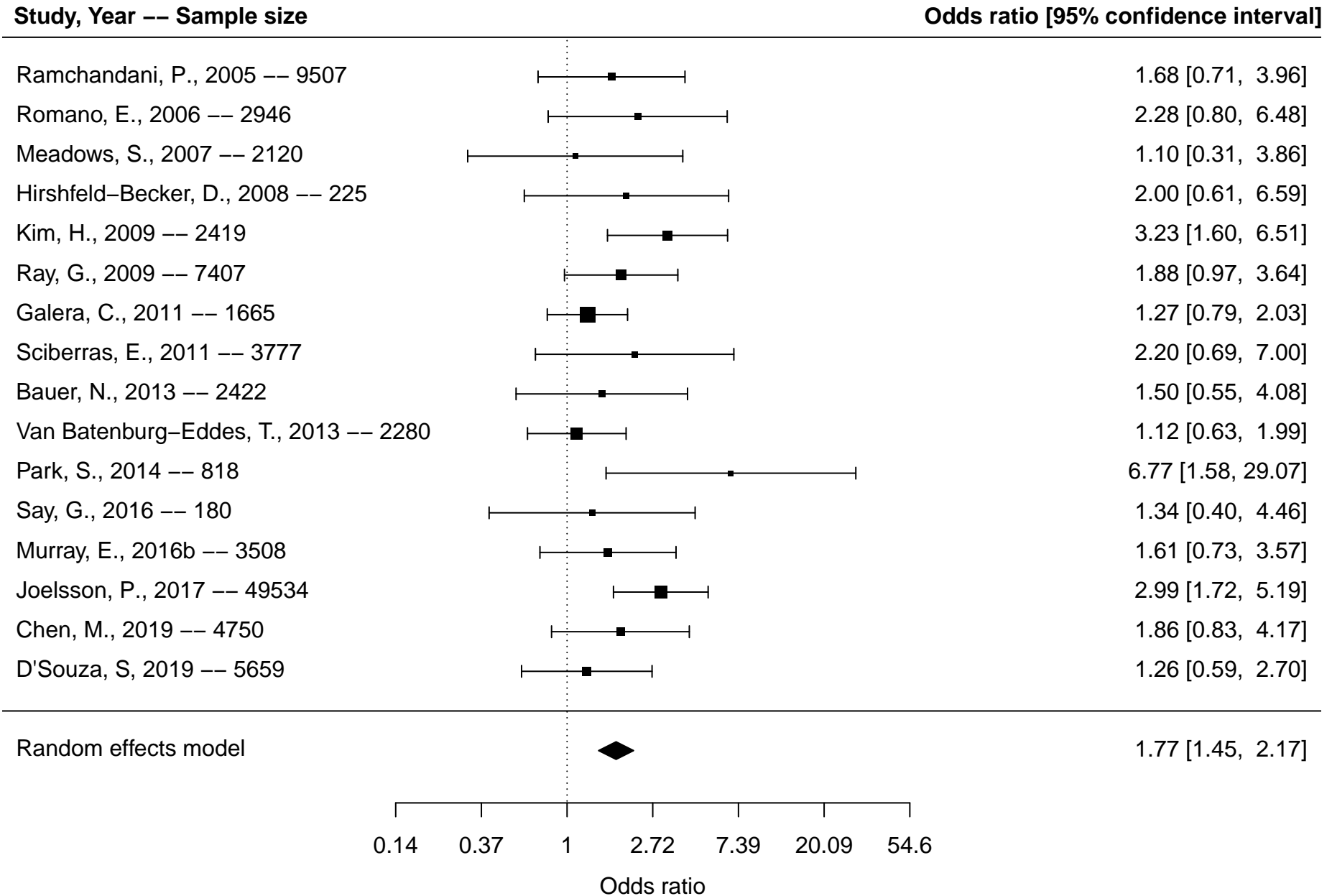


Table of Contents: Supplemental Forest plots of meta-analyses on the associations between parental mental health and ADHD

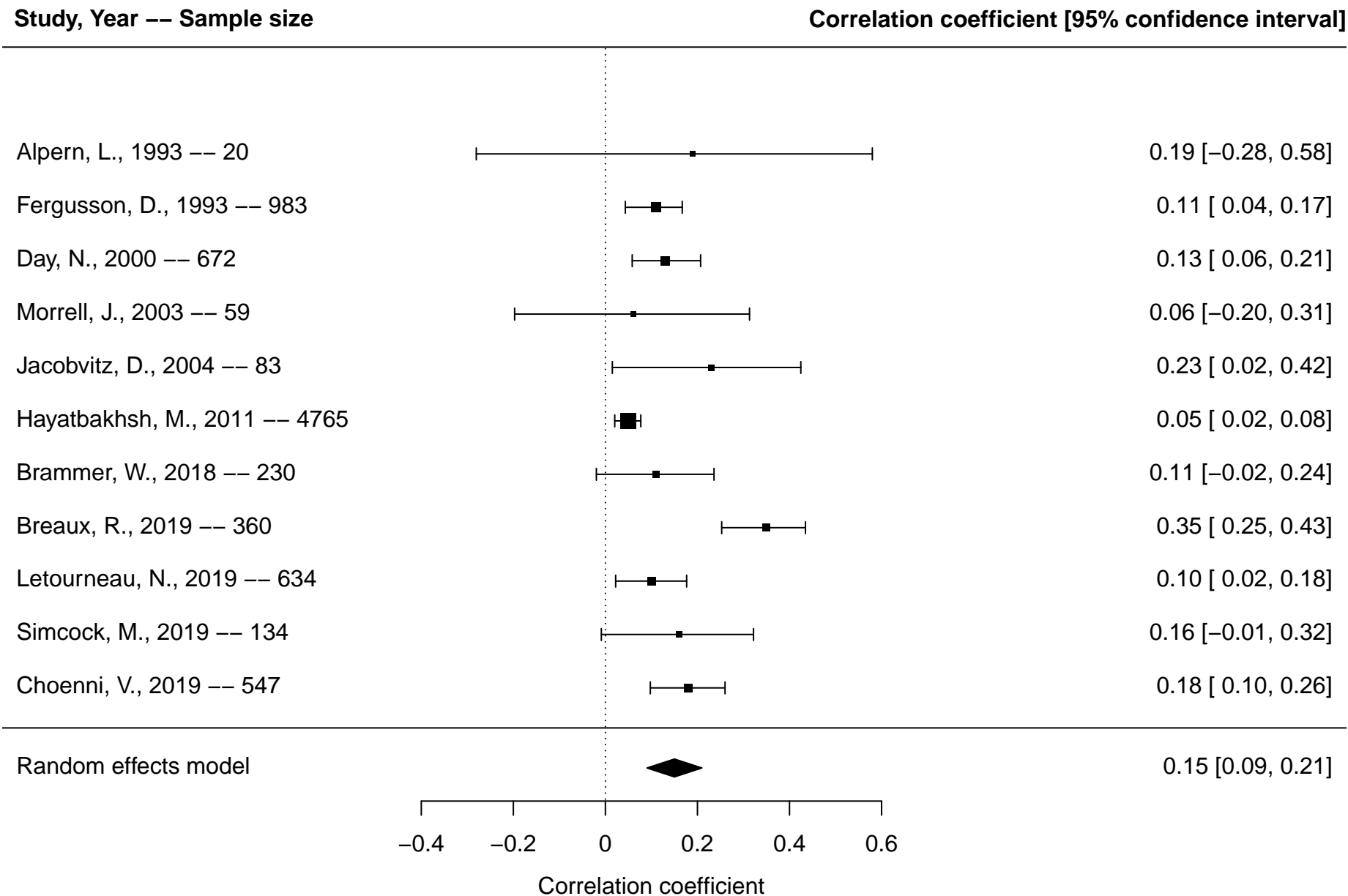
Figure S1. Parental depression and ADHD overall, dichotomous outcomes.....	2
Figure S2. Parental depression and ADHD overall, continuous outcomes.....	3
Figure S3. Parental depression and ADHD diagnosis, dichotomous outcomes	4
Figure S4. Maternal depression and ADHD overall, dichotomous outcomes	5
Figure S5. Paternal depression and ADHD overall, dichotomous outcomes.....	6
Figure S6. Maternal post-partum depression and ADHD overall, dichotomous outcomes	7
Figure S7. Parental depression and inattention, continuous outcomes	8
Figure S8. Parental depression and hyperactivity/impulsivity, continuous outcomes	9
Figure S9. Parental depression and hyperactivity/impulsivity, dichotomous outcomes	10
Figure S10. Maternal depression and hyperactivity/impulsivity, dichotomous outcomes	11
Figure S11. Prenatal antidepressant exposure and ADHD overall, dichotomous outcomes	12
Figure S12. Prenatal antidepressant exposure and ADHD overall, continuous outcomes.....	13
Figure S13. Parental stress and anxiety and ADHD overall, dichotomous outcomes	14
Figure S14. Parental stress and anxiety and ADHD overall, continuous outcomes	15
Figure S15. Parental stress and anxiety and ADHD diagnosis, dichotomous outcomes.....	16
Figure S16. Maternal stress and anxiety and ADHD overall, dichotomous outcomes.....	17
Figure S17. Paternal stress and anxiety and ADHD overall, dichotomous outcomes	18
Figure S18. Maternal prenatal stress and anxiety and ADHD overall, dichotomous outcomes.....	19
Figure S19. Parental antisocial personality disorder and ADHD overall, dichotomous outcomes	20
Figure S20. Parental antisocial personality disorder and ADHD diagnosis, dichotomous outcomes .	21
Figure S21. Maternal antisocial personality disorder and ADHD overall, dichotomous outcomes	22
Figure S22. Paternal antisocial personality disorder and ADHD overall, dichotomous outcomes	23

Figure S1. Forest plot of meta-analysis of parental depression and attention-deficit/hyperactivity disorder (ADHD) overall* based on studies reporting dichotomous outcomes



*Overall includes studies reporting on any included ADHD outcomes (diagnosis, ADHD symptoms, inattention, hyperactivity/impulsivity)

Figure S2. Forest plot of meta-analysis of parental depression and attention-deficit/hyperactivity disorder (ADHD) overall* based on studies reporting continuous outcomes



*Overall includes studies reporting on any included ADHD outcomes (diagnosis, ADHD symptoms, inattention, hyperactivity/impulsivity)

Figure S3. Forest plot of meta-analysis of parental depression and attention-deficit/hyperactivity disorder (ADHD) diagnosis based on studies reporting dichotomous outcomes

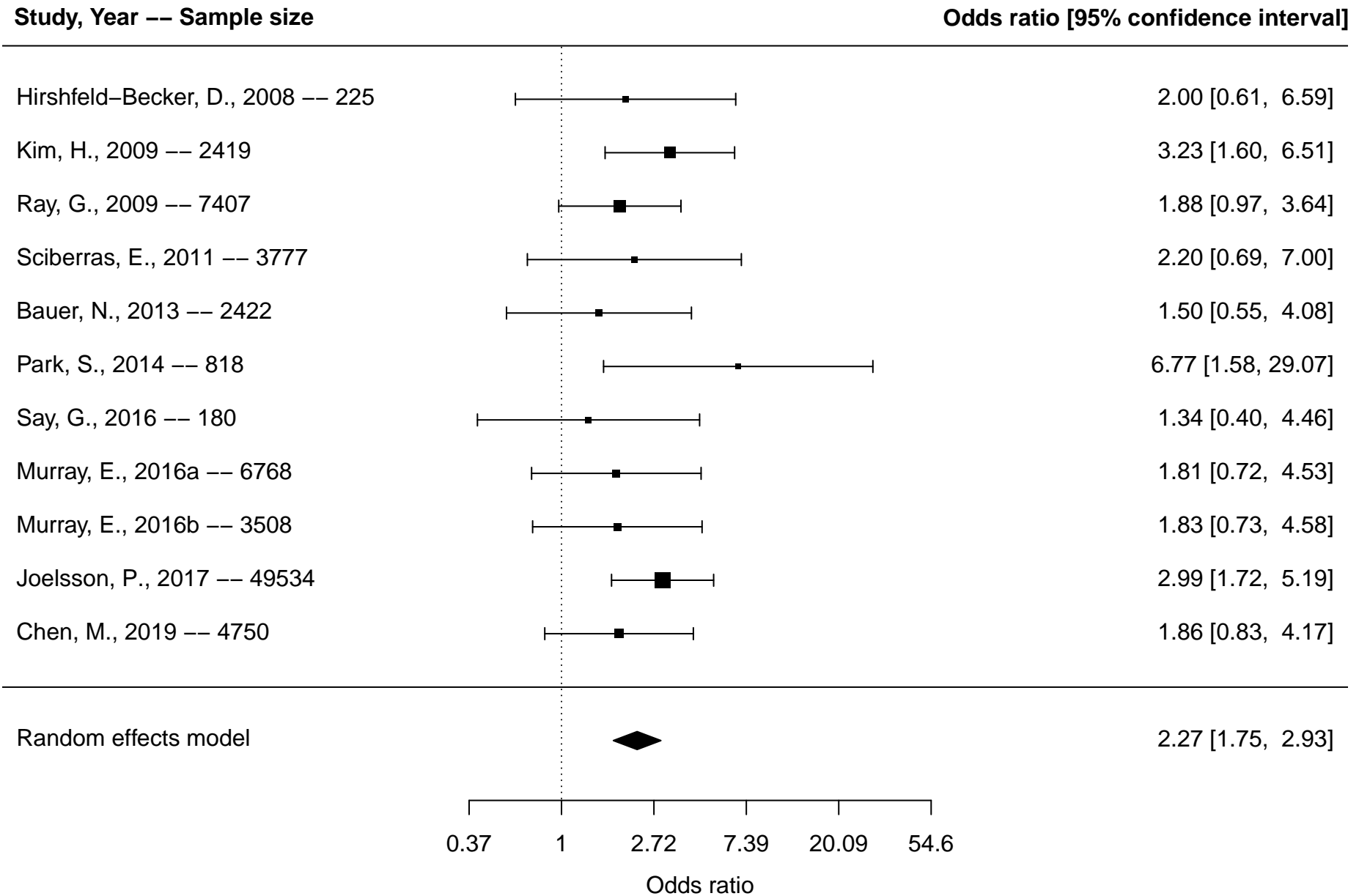
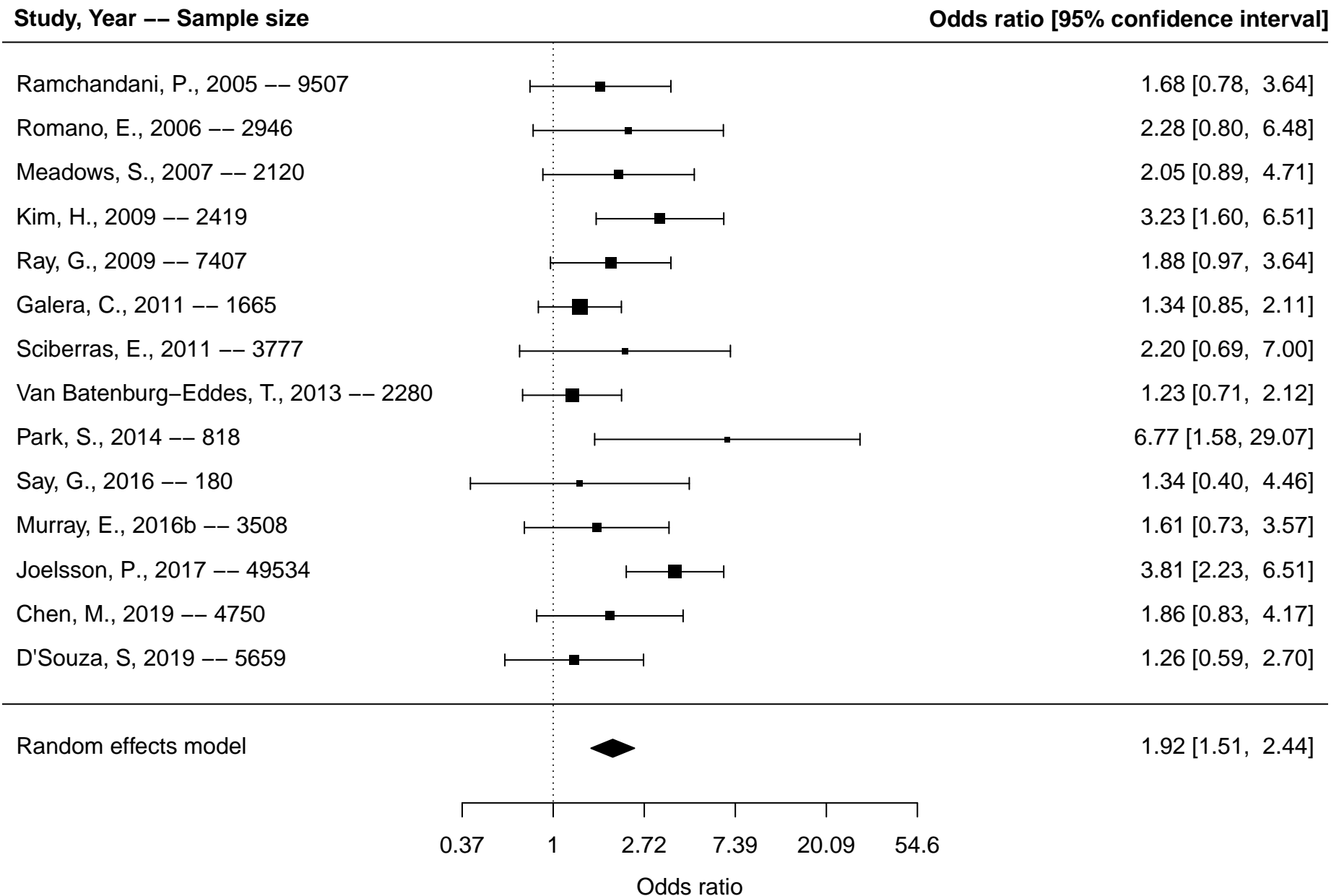


Figure S4. Forest plot of meta-analysis of maternal depression and attention-deficit/hyperactivity disorder (ADHD) overall* based on studies reporting dichotomous outcomes

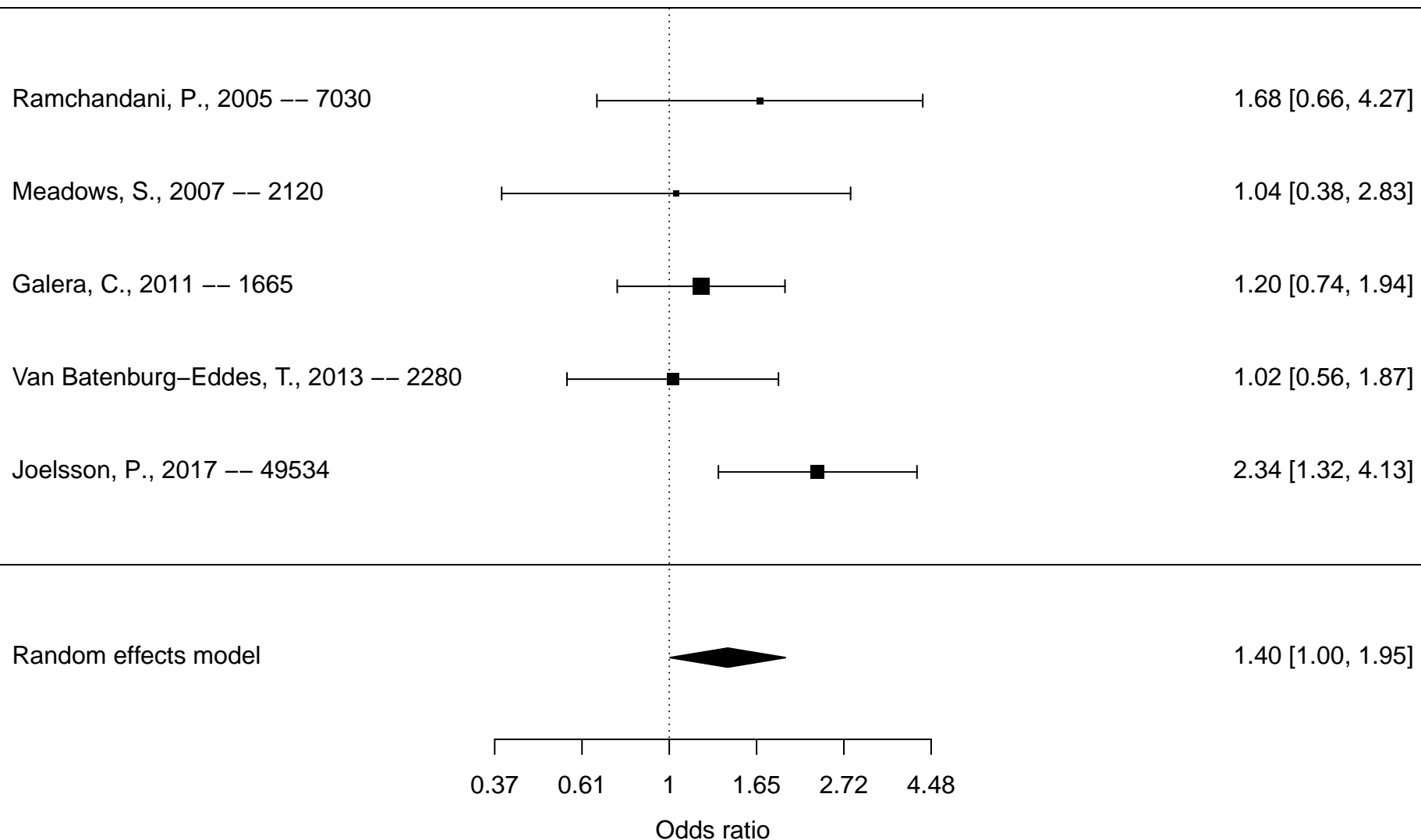


*Overall includes studies reporting on any included ADHD outcomes (diagnosis, ADHD symptoms, inattention, hyperactivity/impulsivity)

Figure S5. Forest plot of meta-analysis of paternal depression and attention-deficit/hyperactivity disorder (ADHD) overall* based on studies reporting dichotomous outcomes

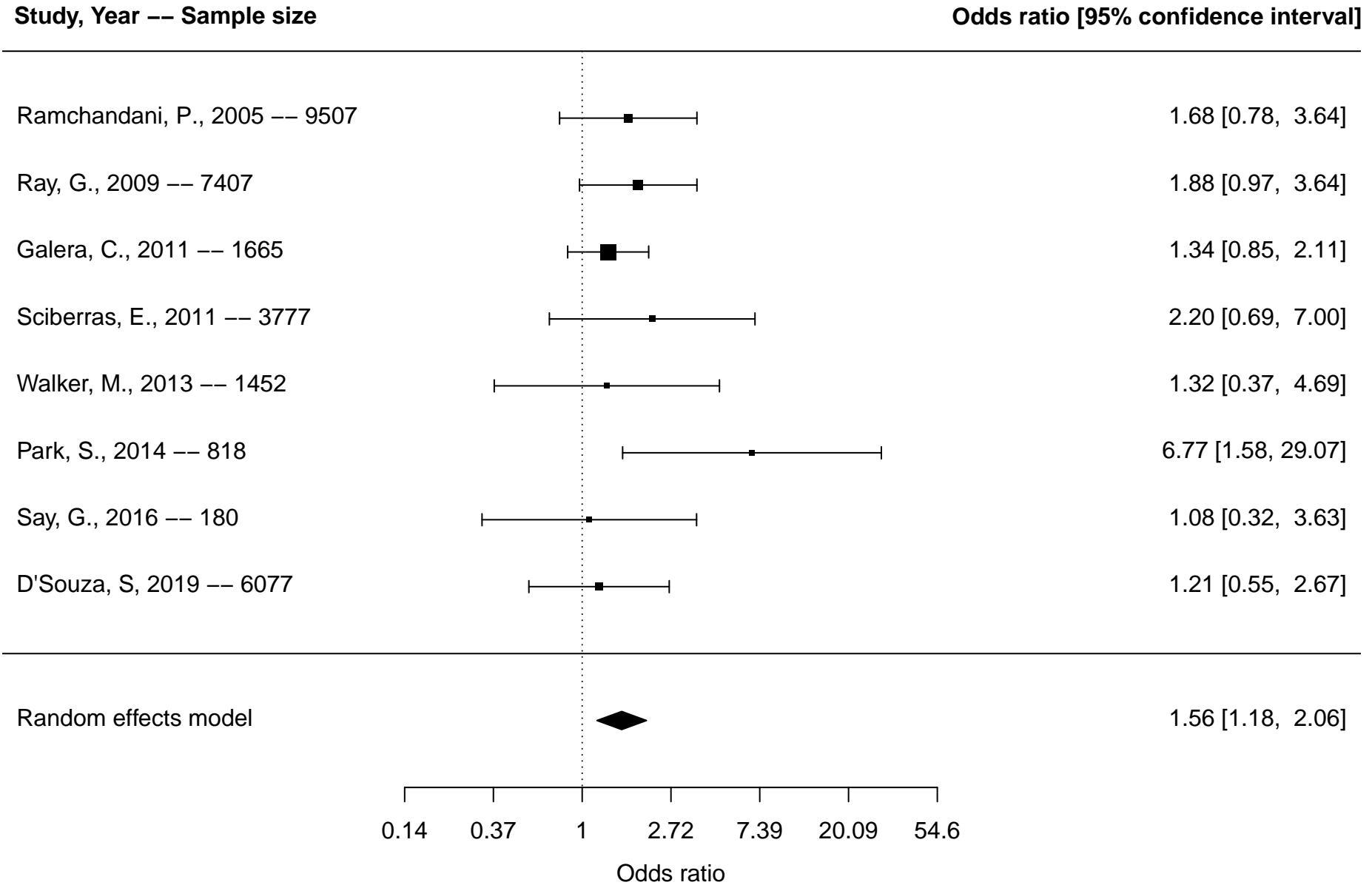
Study, Year -- Sample size

Odds ratio [95% confidence interval]



*Overall includes studies reporting on any included ADHD outcomes (diagnosis, ADHD symptoms, inattention, hyperactivity/impulsivity)

Figure S6. Forest plot of meta-analysis of maternal post-partum depression and attention-deficit/hyperactivity disorder (ADHD) overall* based on studies reporting dichotomous outcomes



*Overall includes studies reporting on any included ADHD outcomes (diagnosis, ADHD symptoms, inattention, hyperactivity/impulsivity)

Figure S7. Forest plot of meta-analysis of parental depression and inattention based on studies reporting continuous outcomes

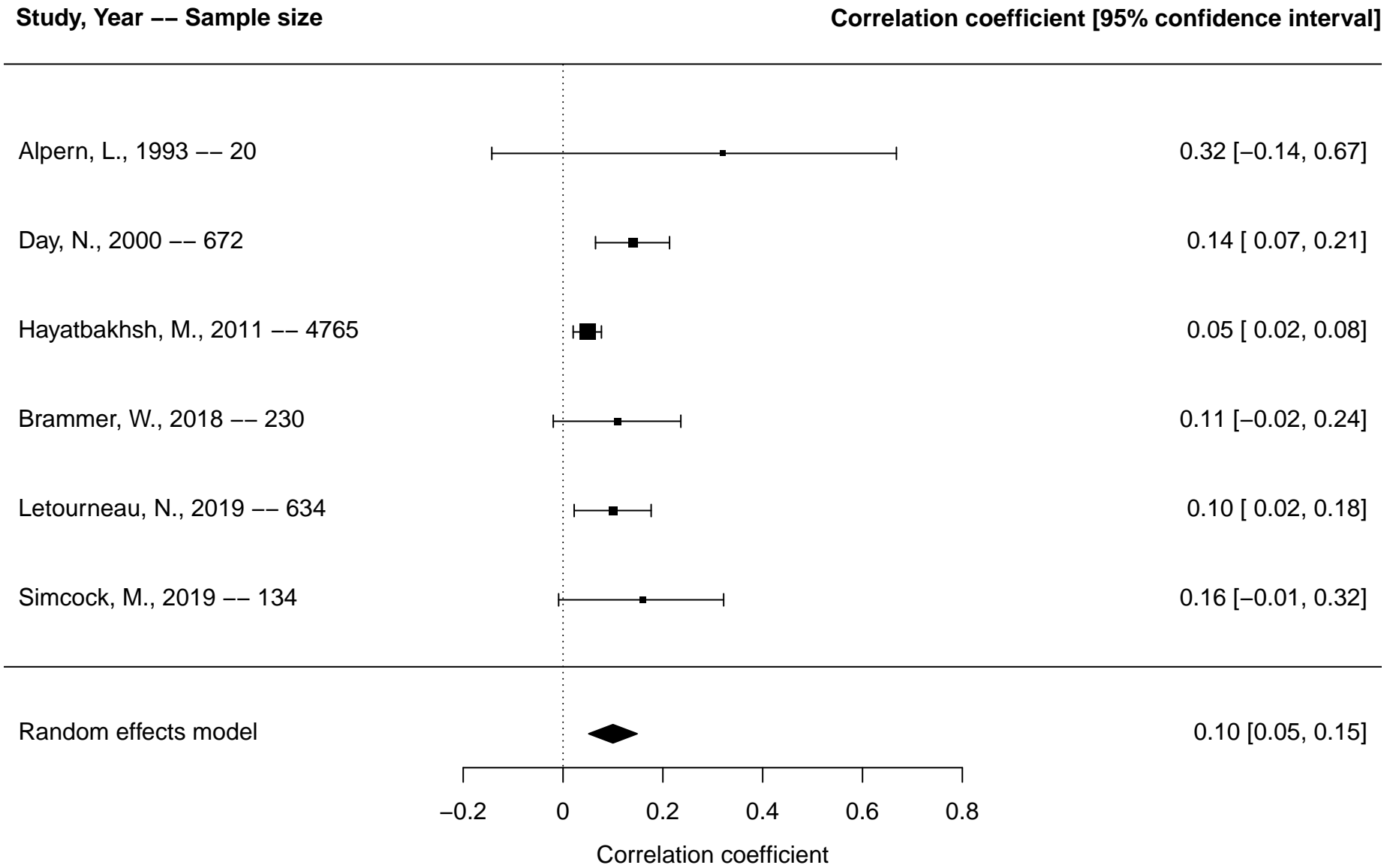


Figure S8. Forest plot of meta-analysis of parental depression and hyperactivity/impulsivity based on studies reporting continuous outcomes

Study, Year -- Sample size

Correlation coefficient [95% confidence interval]

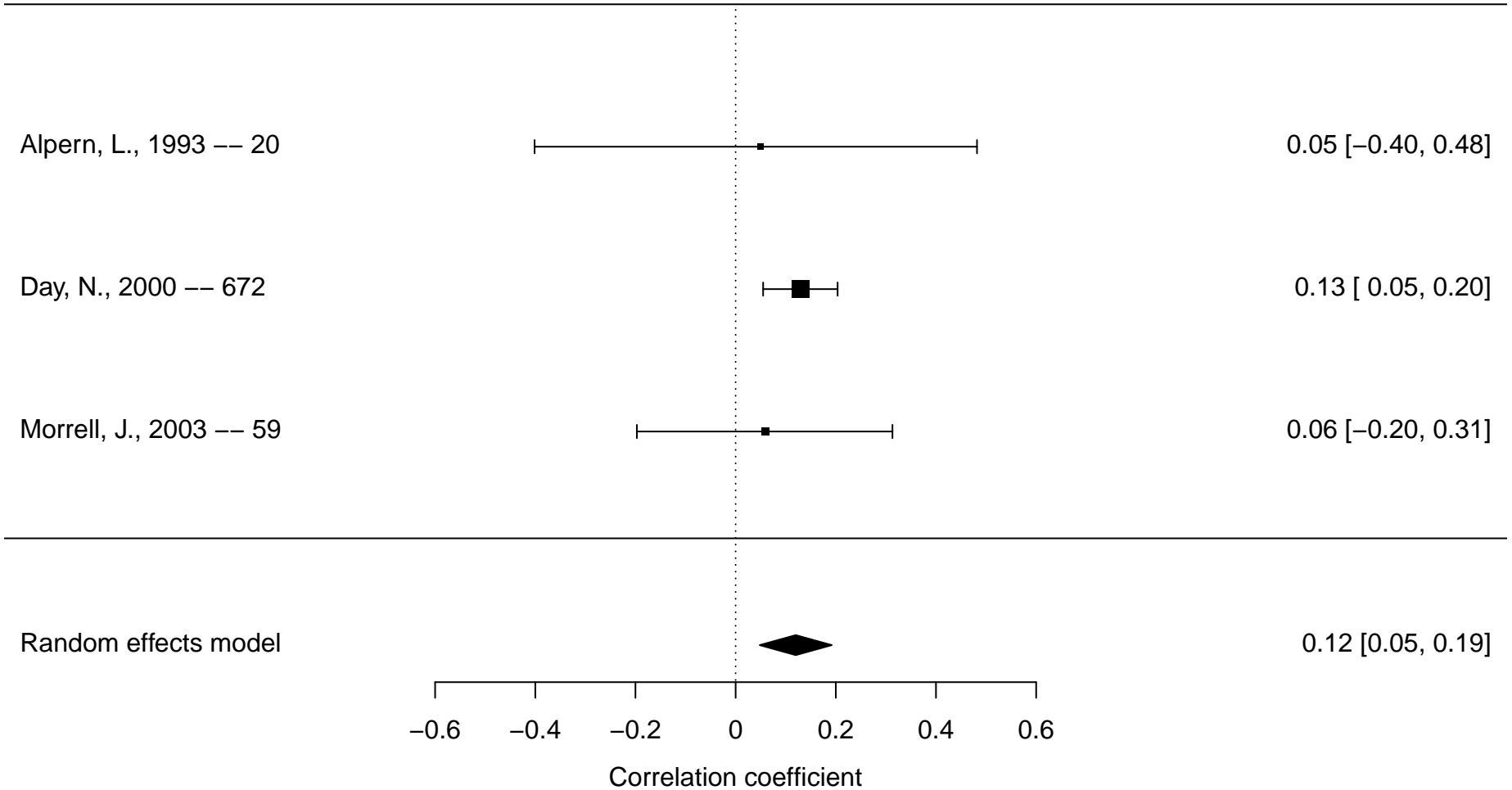


Figure S9. Forest plot of meta-analysis of parental depression and attention-deficit/hyperactivity disorder (ADHD) symptoms based on studies reporting dichotomous outcomes

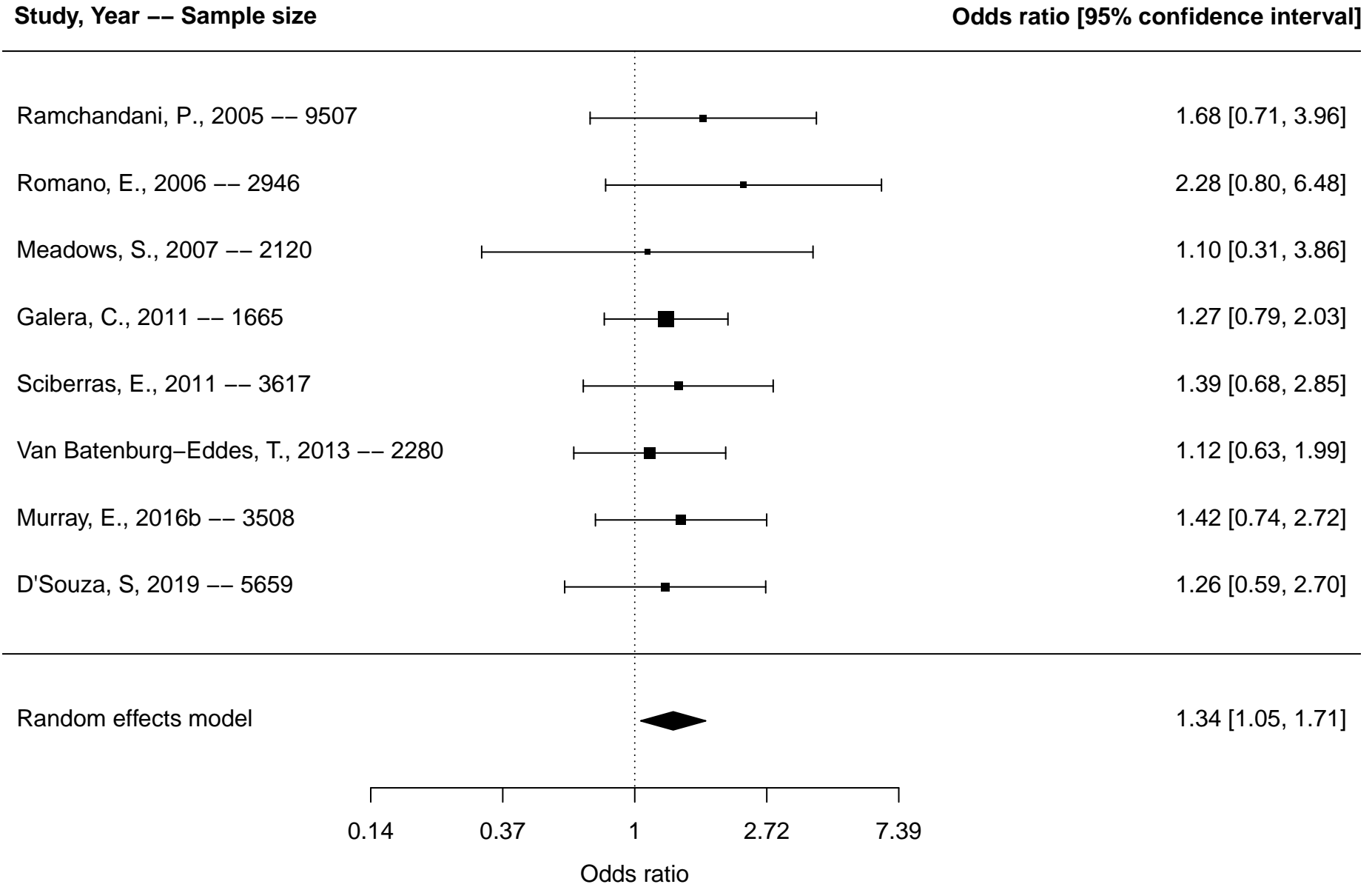


Figure S10. Forest plot of meta-analysis of maternal depression and hyperactivity/impulsivity symptoms based on studies reporting dichotomous outcomes

Study, Year -- Sample size

Odds ratio [95% confidence interval]

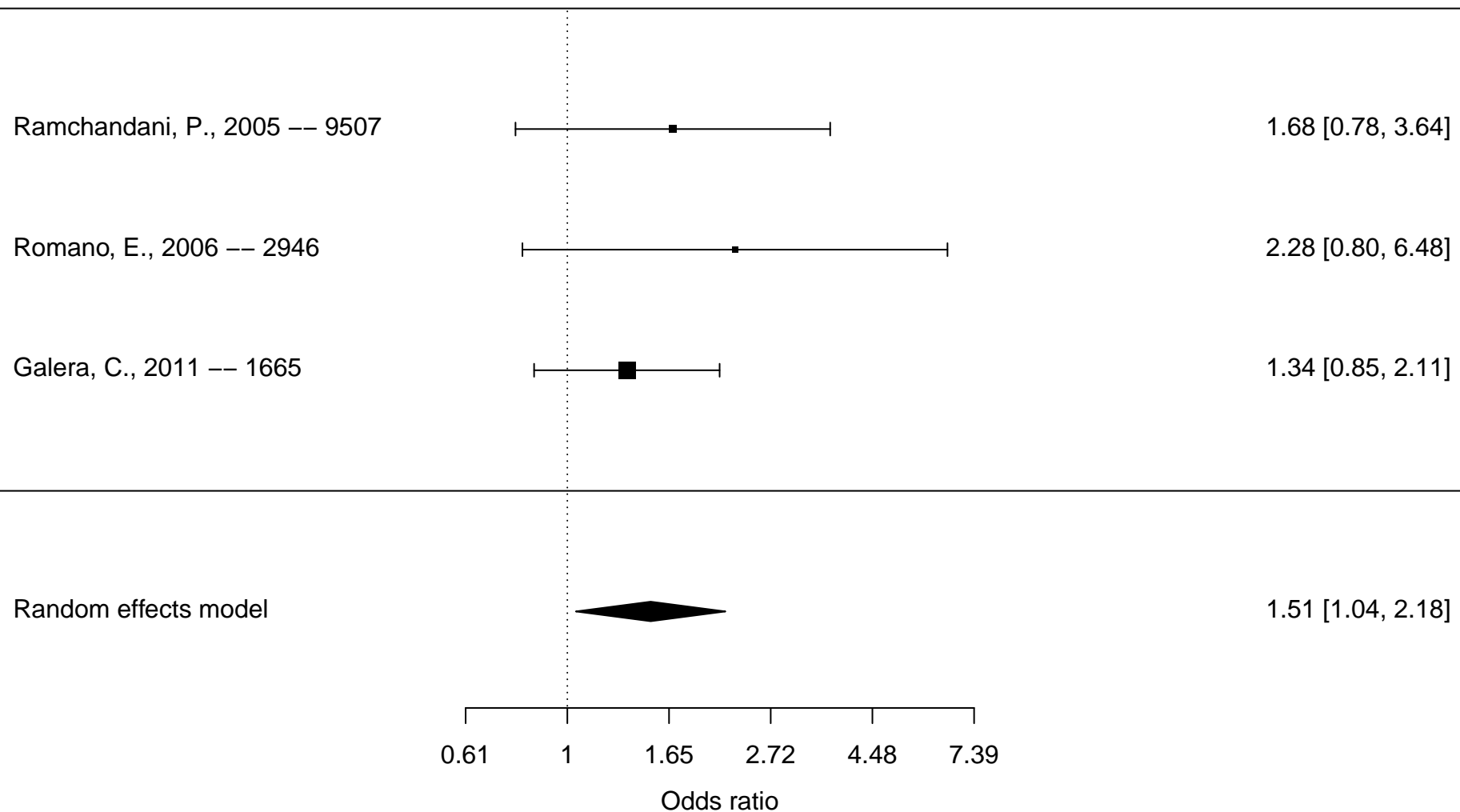
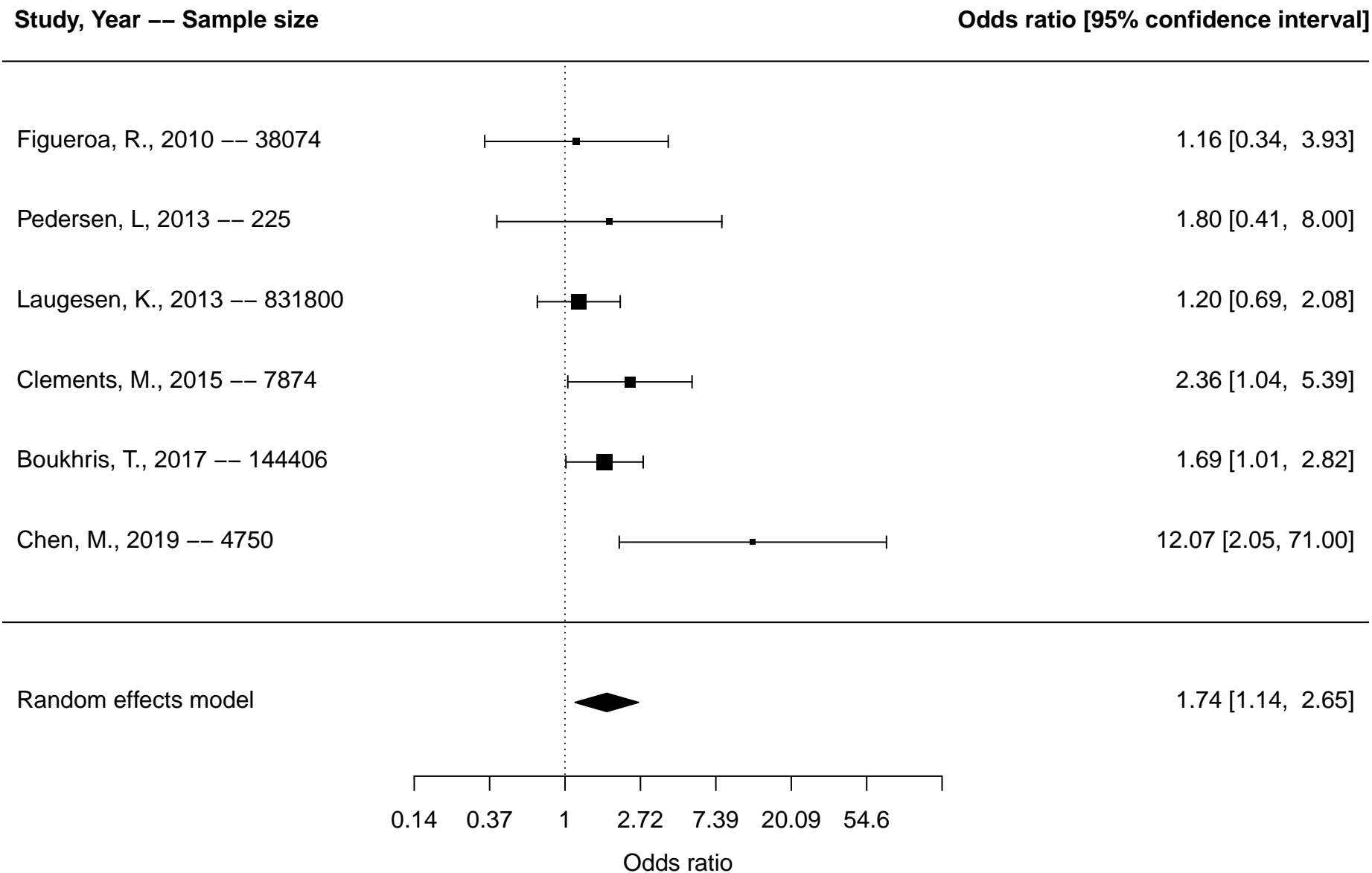
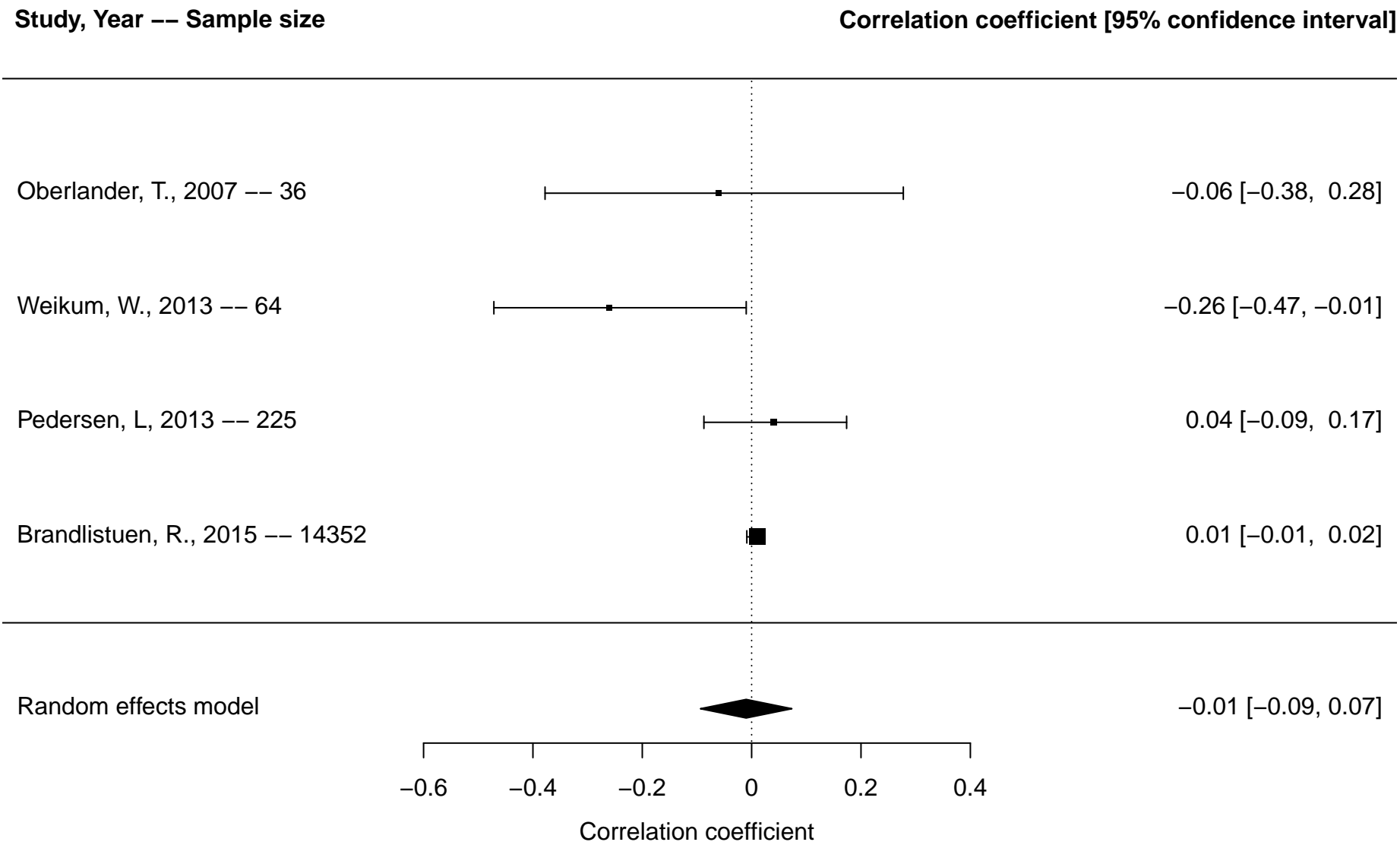


Figure S11. Forest plot of meta-analysis of prenatal antidepressant exposure and attention-deficit/hyperactivity disorder (ADHD) overall* based on studies reporting dichotomous outcomes



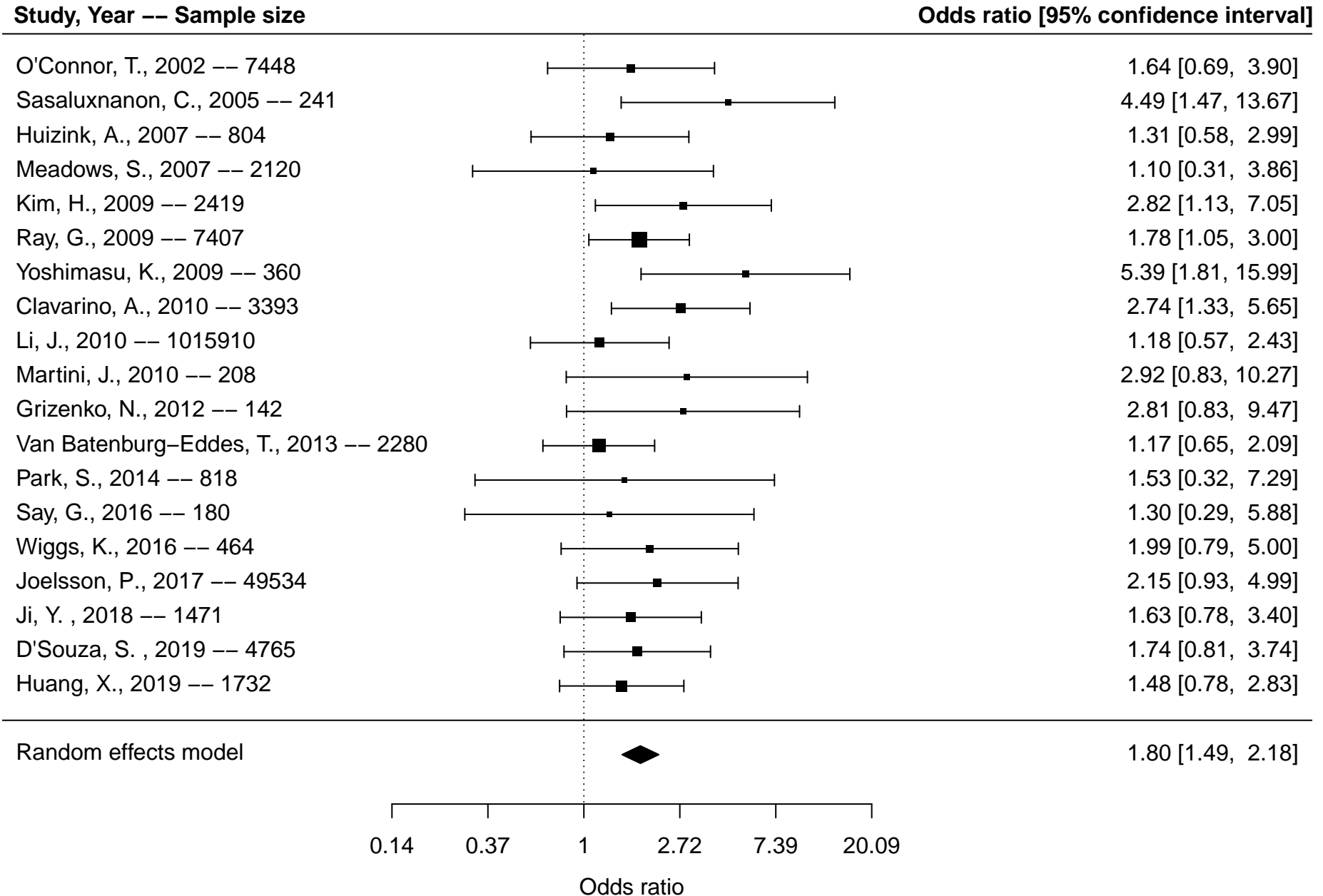
*Overall includes studies reporting on any included ADHD outcomes (diagnosis, ADHD symptoms, inattention, hyperactivity/impulsivity)

Figure S12. Forest plot of meta-analysis of prenatal antidepressant exposure and attention-deficit/hyperactivity disorder (ADHD) overall* based on studies reporting continuous outcomes



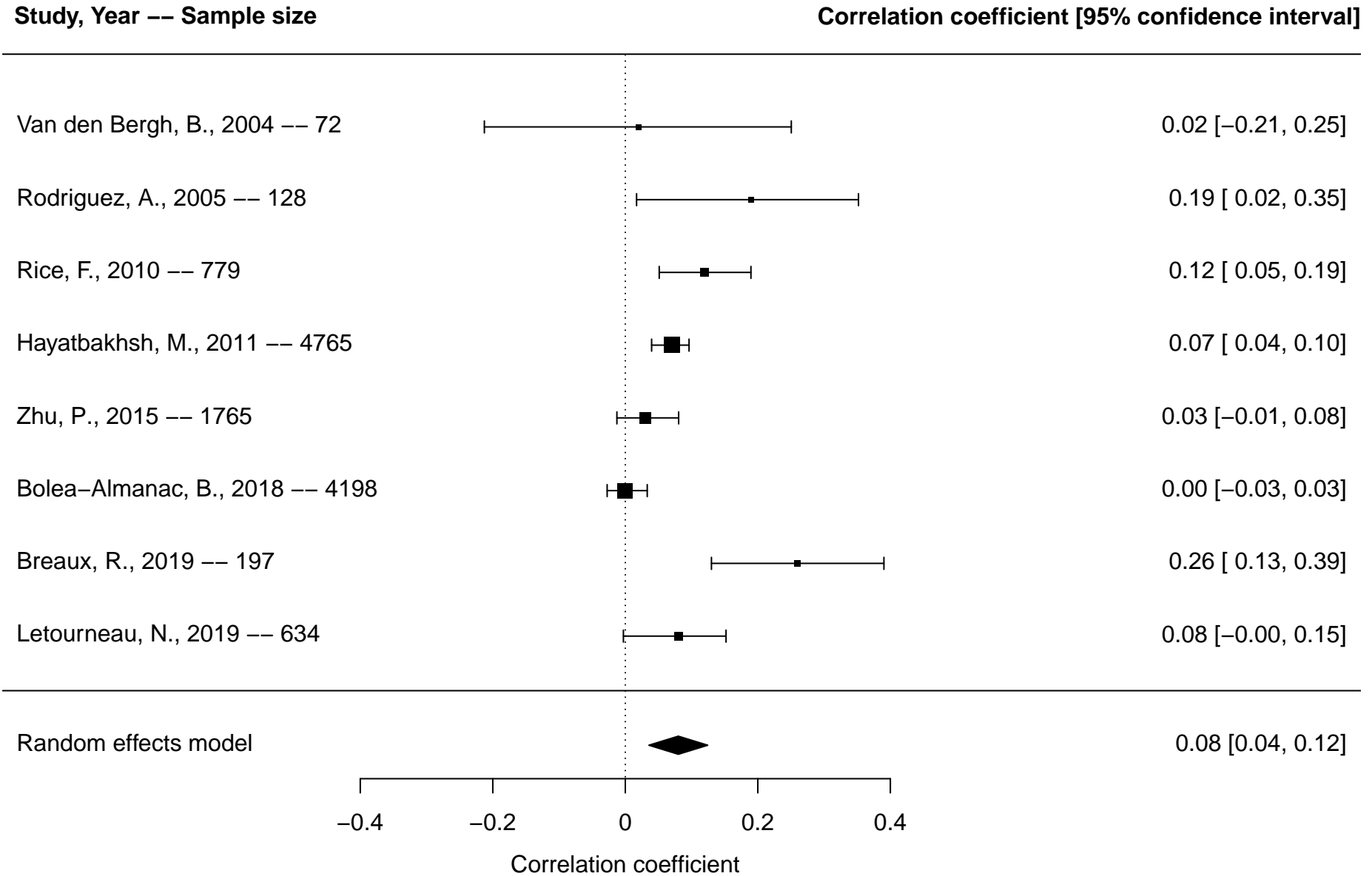
*Overall includes studies reporting on any included ADHD outcomes (diagnosis, ADHD symptoms, inattention, hyperactivity/impulsivity)

Figure S13. Forest plot of meta-analysis of parental stress and anxiety and attention-deficit/hyperactivity disorder (ADHD) overall* based on studies reporting dichotomous outcomes



*Overall includes studies reporting on any included ADHD outcomes (diagnosis, ADHD symptoms, inattention, hyperactivity/impulsivity)

Figure S14. Forest plot of meta-analysis of parental stress and anxiety and attention-deficit/hyperactivity disorder (ADHD) overall* based on studies reporting continuous outcomes



*Overall includes studies reporting on any included ADHD outcomes (diagnosis, ADHD symptoms, inattention, hyperactivity/impulsivity)

Figure S15. Forest plot of meta-analysis of parental stress and anxiety and attention-deficit/hyperactivity disorder (ADHD) diagnosis based on studies reporting dichotomous outcomes

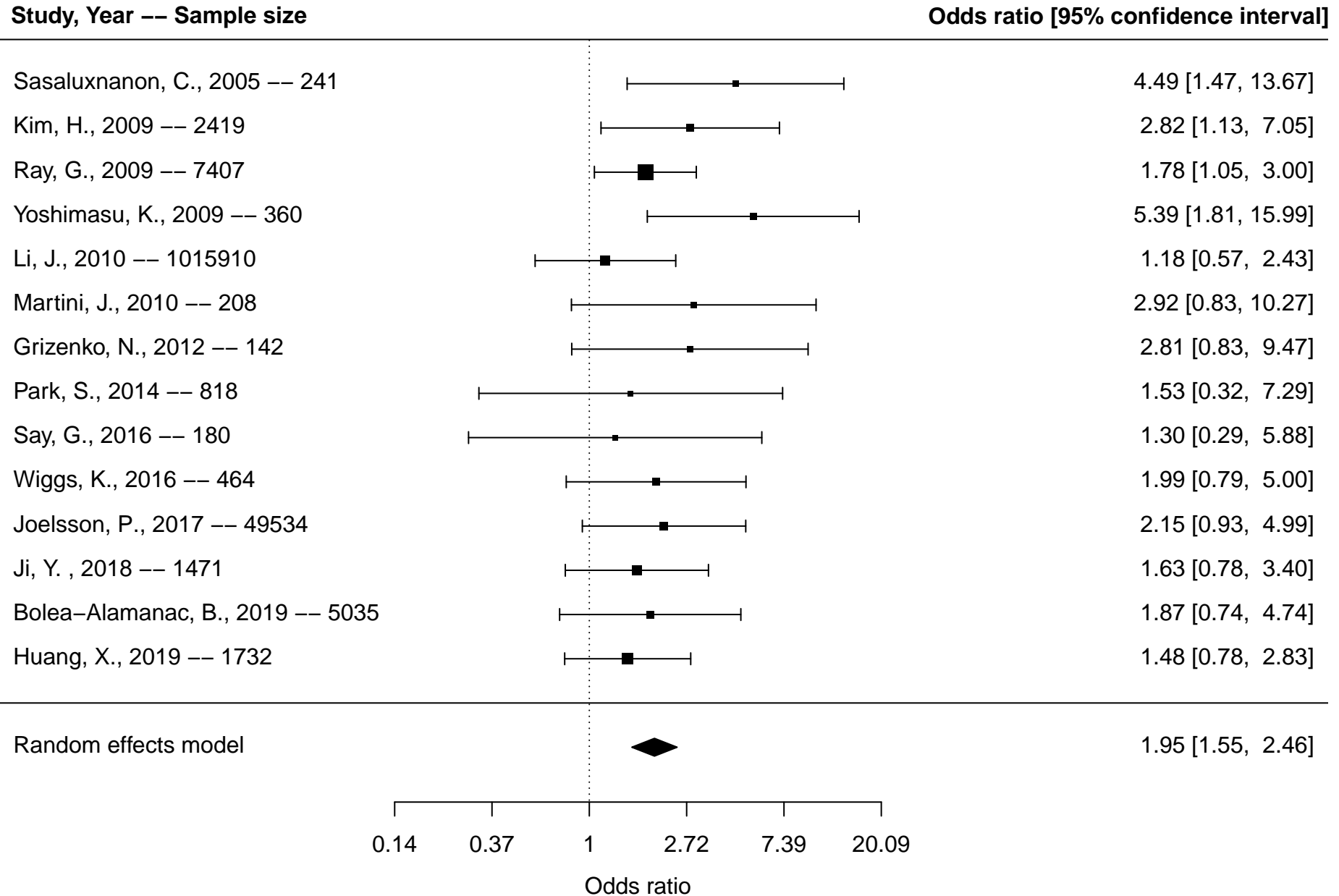
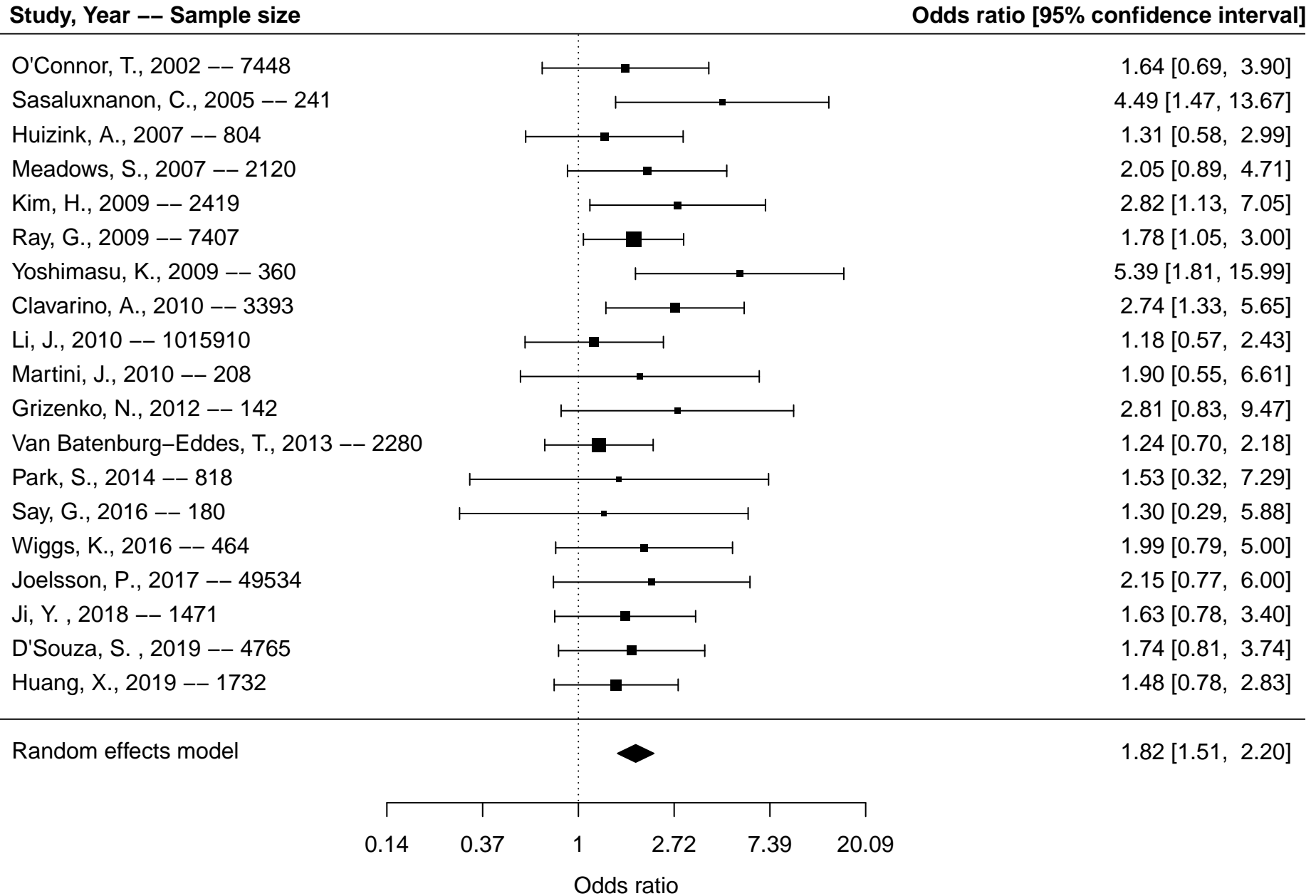
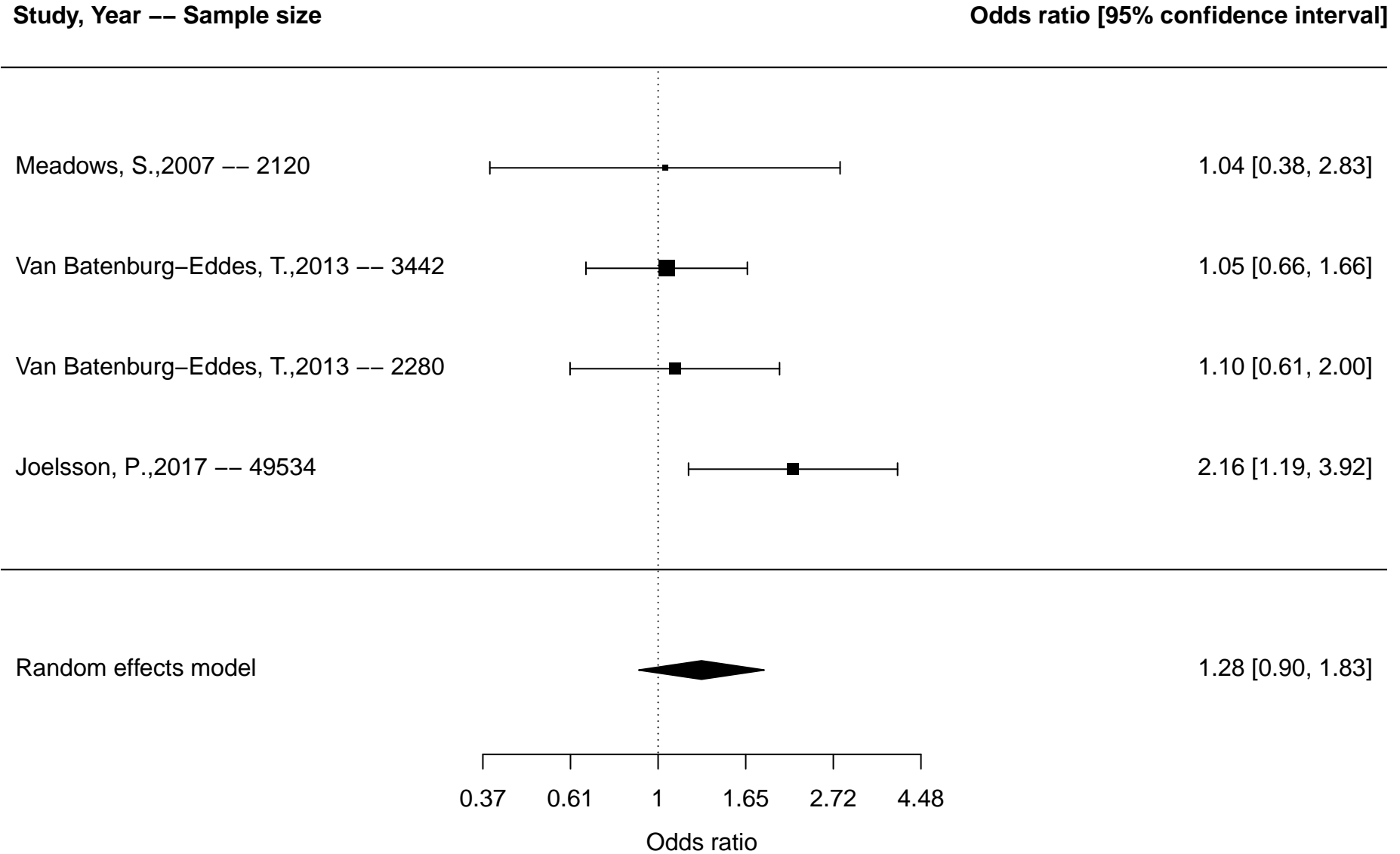


Figure S16. Forest plot of meta-analysis of maternal stress and anxiety and attention-deficit/hyperactivity disorder (ADHD) overall* based on studies reporting dichotomous outcomes



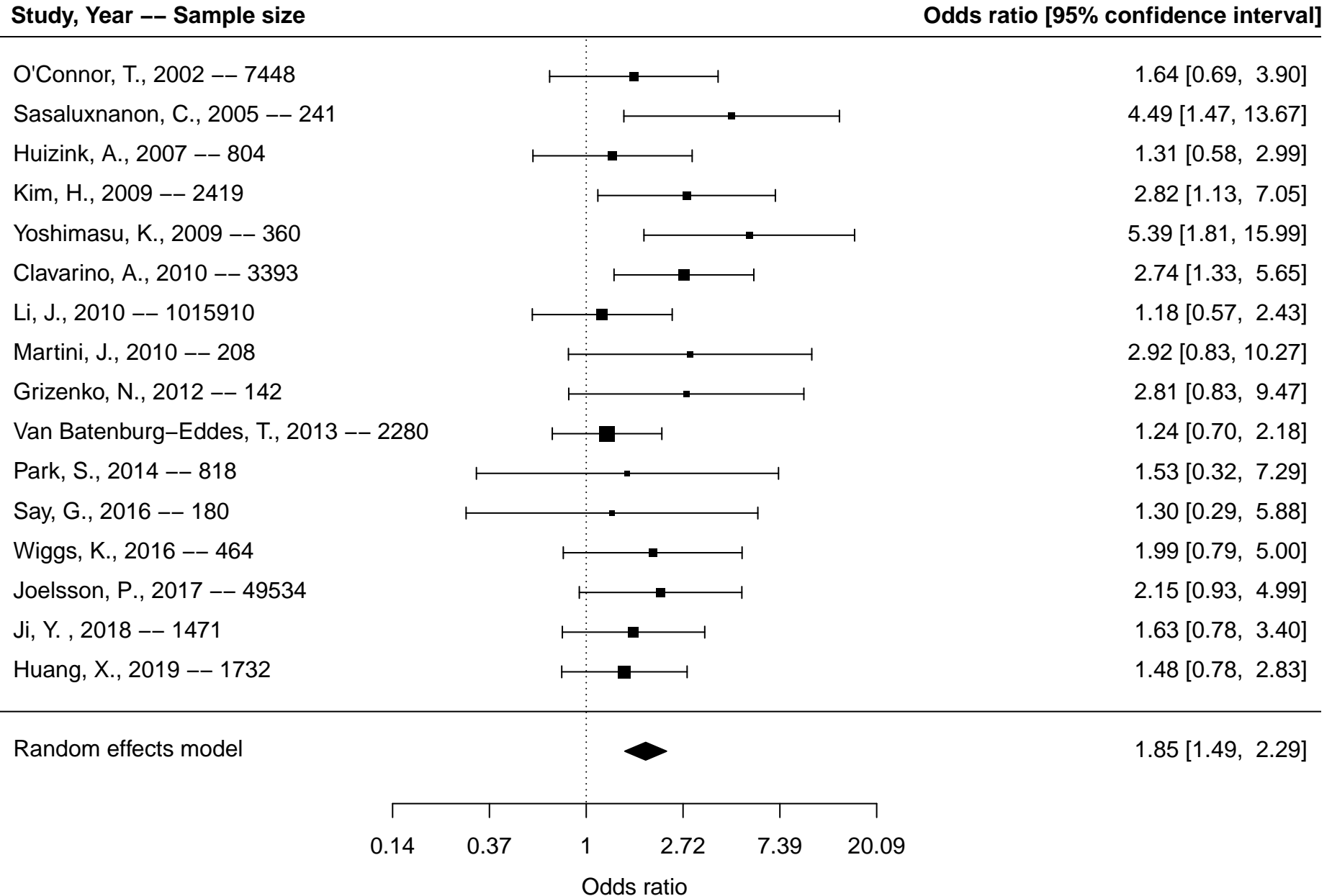
*Overall includes studies reporting on any included ADHD outcomes (diagnosis, ADHD symptoms, inattention, hyperactivity/impulsivity)

Figure S17. Forest plot of meta-analysis of paternal stress and anxiety and attention-deficit/hyperactivity disorder (ADHD) overall* based on studies reporting dichotomous outcomes



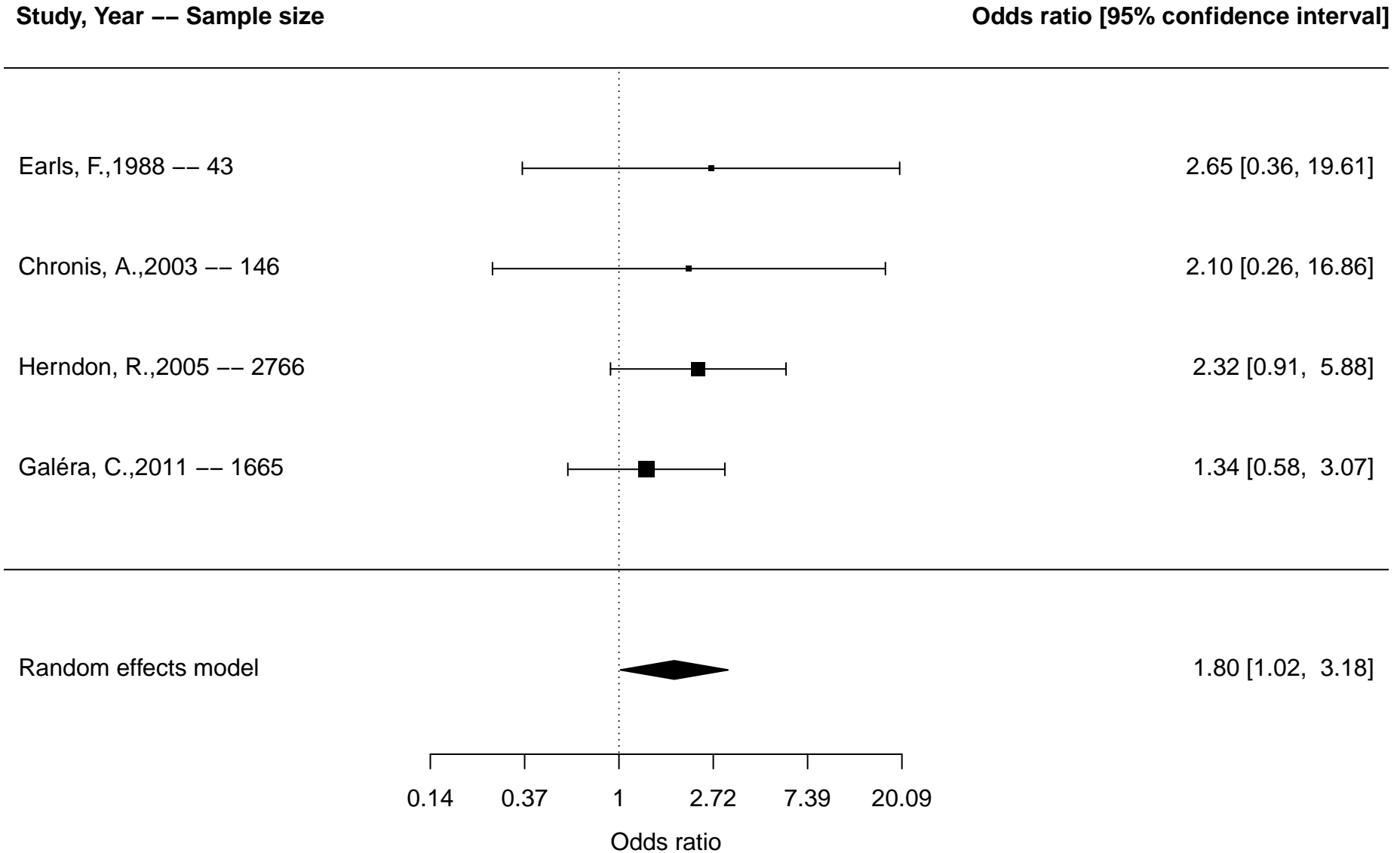
*Overall includes studies reporting on any included ADHD outcomes (diagnosis, ADHD symptoms, inattention, hyperactivity/impulsivity)

Figure S18. Forest plot of meta-analysis of maternal prenatal stress and anxiety and attention-deficit/hyperactivity disorder (ADHD) overall* based on studies reporting dichotomous outcomes



*Overall includes studies reporting on any included ADHD outcomes (diagnosis, ADHD symptoms, inattention, hyperactivity/impulsivity)

Figure S19. Forest plot of meta-analysis of parental antisocial personality disorder and attention-deficit/hyperactivity disorder (ADHD) overall* based on studies reporting dichotomous outcomes



*Overall includes studies reporting on any included ADHD outcomes (diagnosis, ADHD symptoms, inattention, hyperactivity/impulsivity)

Figure S20. Forest plot of meta-analysis of parental antisocial personality disorder and attention-deficit/hyperactivity disorder (ADHD) diagnosis based on studies reporting dichotomous outcomes

Study, Year -- Sample size

Odds ratio [95% confidence interval]

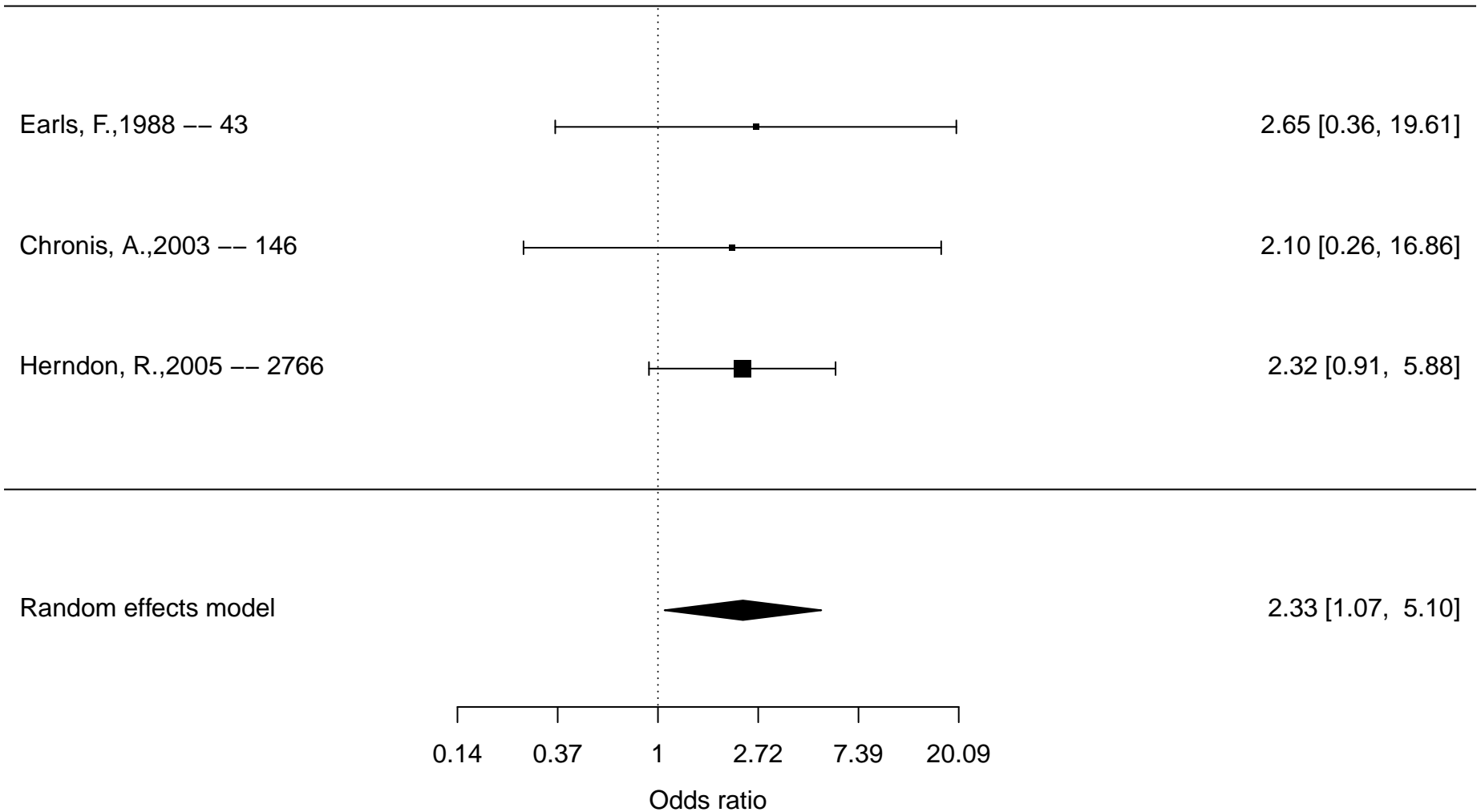
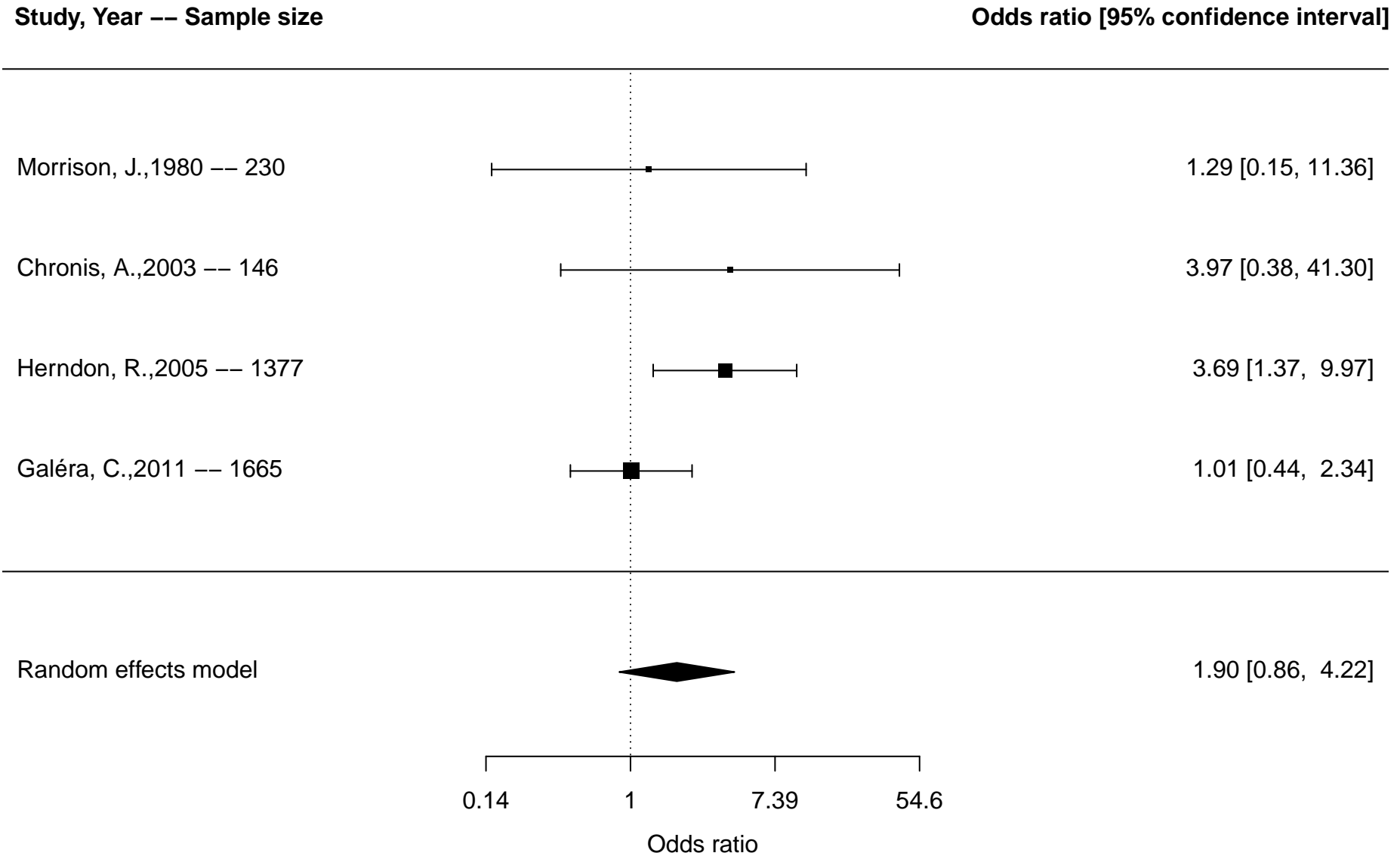
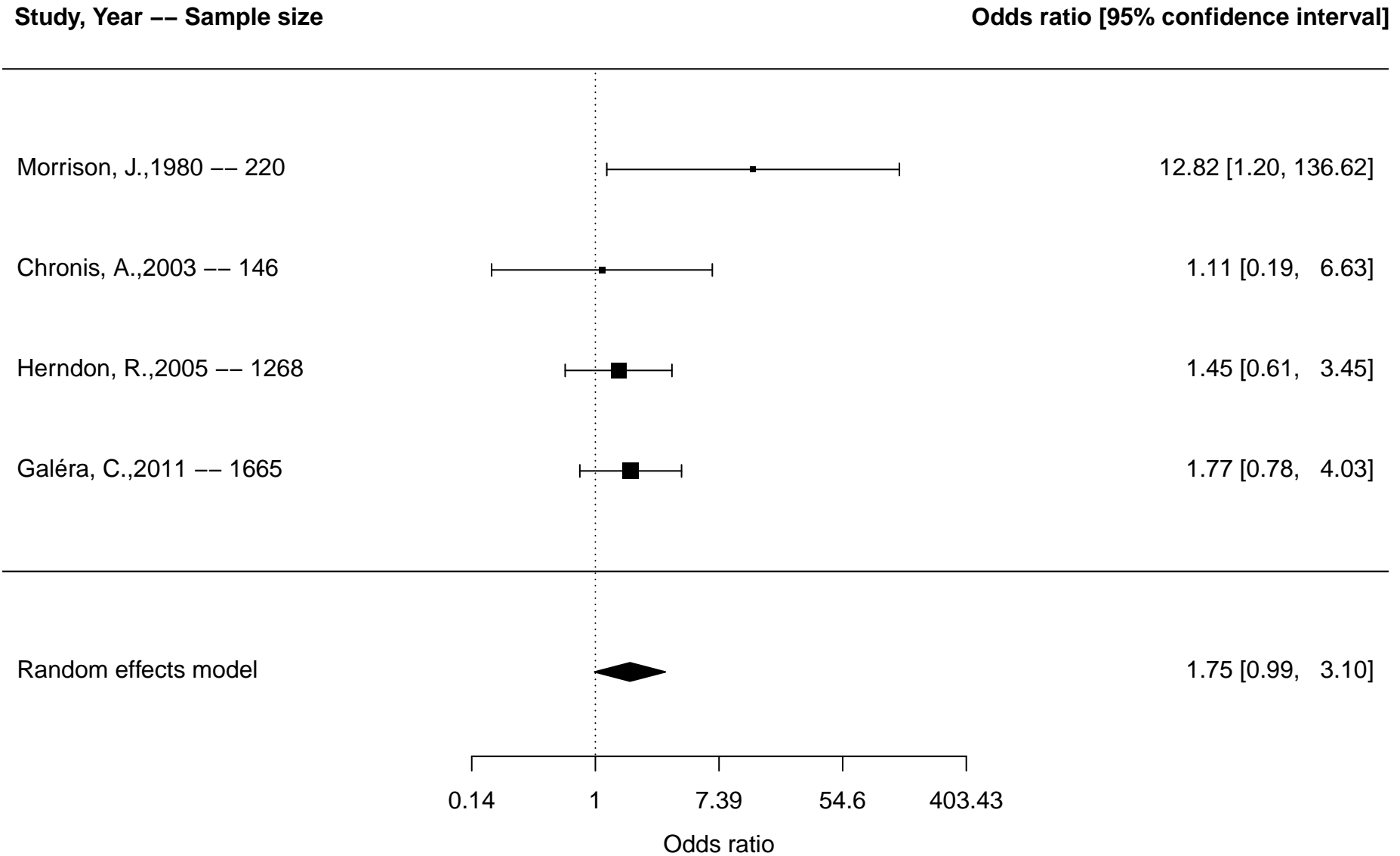


Figure S21. Forest plot of meta-analysis of maternal antisocial personality disorder and attention-deficit/hyperactivity disorder (ADHD) overall* based on studies reporting dichotomous outcomes



*Overall includes studies reporting on any included ADHD outcomes (diagnosis, ADHD symptoms, inattention, hyperactivity/impulsivity)

Figure S22. Forest plot of meta-analysis of paternal antisocial personality disorder and attention-deficit/hyperactivity disorder (ADHD) overall* based on studies reporting dichotomous outcomes



*Overall includes studies reporting on any included ADHD outcomes (diagnosis, ADHD symptoms, inattention, hyperactivity/impulsivity)