

# South Carolina, 2007

## Primary and secondary syphilis

- **CASES:** South Carolina reported 91 cases in 2007.
- **RATES:** South Carolina ranked 27 among 50 states, DC, and 3 territories with 2.1 cases per 100,000 population compared to the total rate of 3.8 cases per 100,000 population.

## Rates of primary and secondary syphilis, by sex

- In South Carolina, the rate among males was 3.9 per 100,000 population compared to the total male rate of 6.6 per 100,000.
- The rate among females was 0.5 per 100,000 compared to the total female rate of 1.1 per 100,000.

## Rates of primary and secondary syphilis, by race/ethnicity

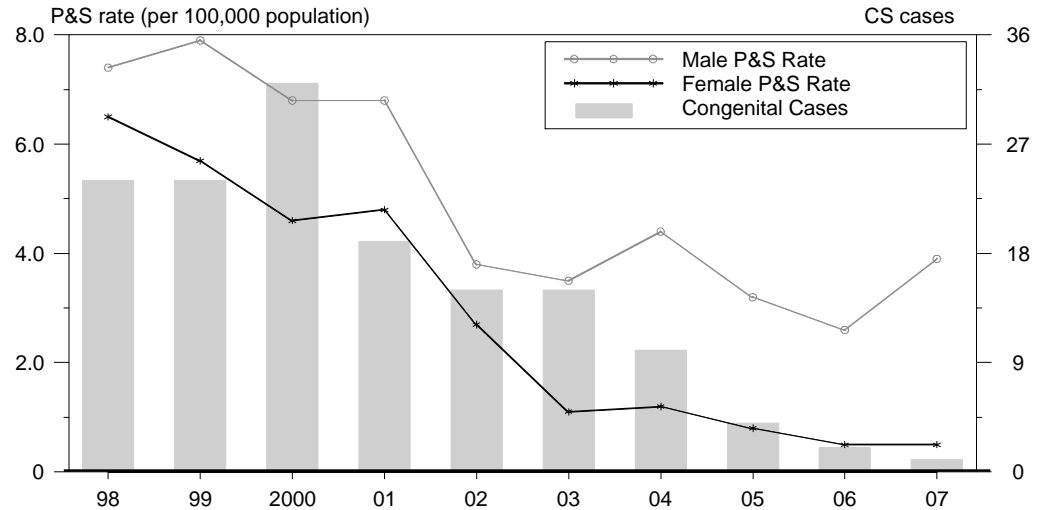
In South Carolina, the race/ethnicity adjusted rates per 100,000 population were 1.0 among whites, 4.7 among blacks, 2.6 among Hispanics, 0.0 among Asian/Pacific Islanders, and 0.0 among American Indians/Alaska Natives.

- The rate among blacks was 4.7 times that of whites.
- The rate among Hispanics was 2.6 times that of whites.

## Congenital syphilis

- **CASES:** South Carolina reported 1 case in 2007.
- **RATES:** South Carolina ranked 30 among 31 states, DC, and 2 territories reporting congenital syphilis cases with a rate of 1.8 cases per 100,000 live births compared to the total rate of 10.5 cases per 100,000.

## Syphilis: P&S Rates and Congenital Cases, South Carolina, 1998-2007



## Total P&S Syphilis Rates by County, South Carolina, 2007

