

Mississippi, 2007

Primary and secondary syphilis

- **CASES:** Mississippi reported 133 cases in 2007.
- **RATES:** Mississippi ranked 13 among 50 states, DC, and 3 territories with 4.6 cases per 100,000 population compared to the total rate of 3.8 cases per 100,000 population.

Rates of primary and secondary syphilis, by sex

- In Mississippi, the rate among males was 7.0 per 100,000 population compared to the total male rate of 6.6 per 100,000.
- The rate among females was 2.3 per 100,000 compared to the total female rate of 1.1 per 100,000.

Rates of primary and secondary syphilis, by race/ethnicity

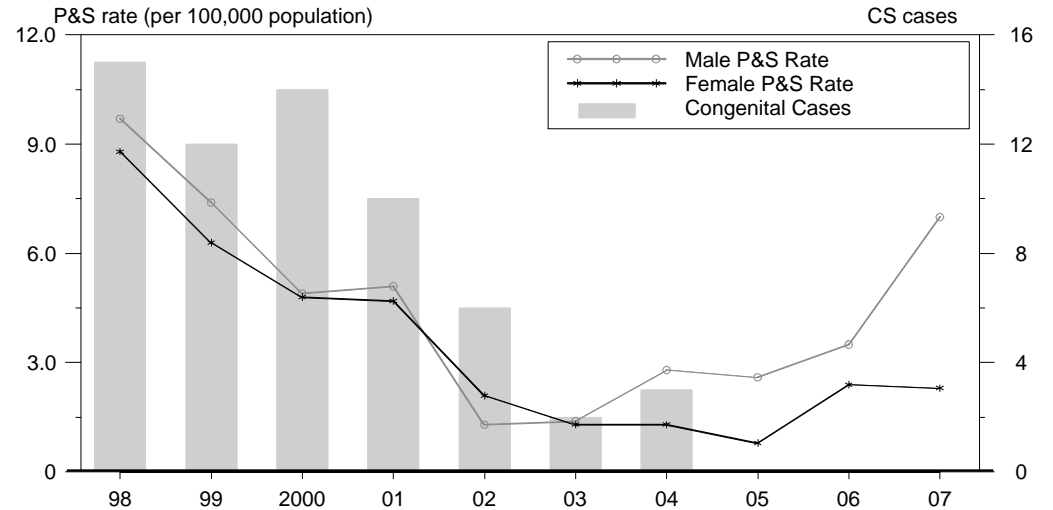
In Mississippi, the race/ethnicity adjusted rates per 100,000 population were 1.4 among whites, 9.9 among blacks, 0.0 among Hispanics, 4.1 among Asian/Pacific Islanders, and 0.0 among American Indians/Alaska Natives.

- The rate among blacks was 7.1 times that of whites.
- The rate among Asian/Pacific Islanders was 2.9 times that of whites.

Congenital syphilis

- **CASES:** Mississippi reported 0 cases in 2007.
- **RATES:** Mississippi had a rate of 0.0 cases per 100,000 live births compared to the total rate of 10.5 cases per 100,000.

Syphilis: P&S Rates and Congenital Cases, Mississippi, 1998-2007



Total P&S Syphilis Rates by County, Mississippi, 2007

