

Indiana, 2007

Primary and secondary syphilis

- **CASES:** Indiana reported 54 cases in 2007.
- **RATES:** Indiana ranked 41 among 50 states, DC, and 3 territories with 0.9 cases per 100,000 population compared to the total rate of 3.8 cases per 100,000 population.

Rates of primary and secondary syphilis, by sex

- In Indiana, the rate among males was 1.5 per 100,000 population compared to the total male rate of 6.6 per 100,000.
- The rate among females was 0.2 per 100,000 compared to the total female rate of 1.1 per 100,000.

Rates of primary and secondary syphilis, by race/ethnicity

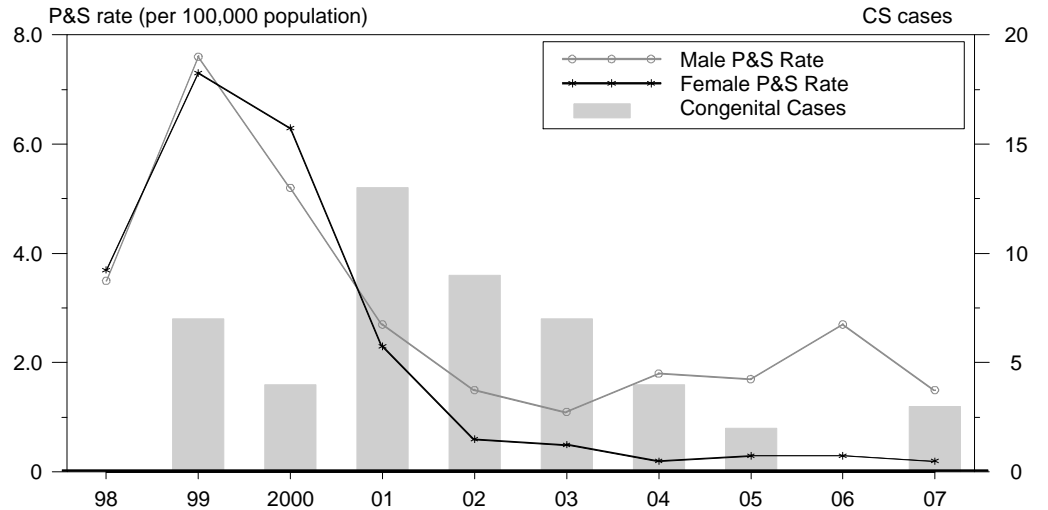
In Indiana, the race/ethnicity adjusted rates per 100,000 population were 0.5 among whites, 3.6 among blacks, 1.3 among Hispanics, 0.0 among Asian/Pacific Islanders, and 0.0 among American Indians/Alaska Natives.

- The rate among blacks was 7.2 times that of whites.
- The rate among Hispanics was 2.6 times that of whites.

Congenital syphilis

- **CASES:** Indiana reported 3 cases in 2007.
- **RATES:** Indiana ranked 26 among 31 states, DC, and 2 territories reporting congenital syphilis cases with a rate of 3.4 cases per 100,000 live births compared to the total rate of 10.5 cases per 100,000.

Syphilis: P&S Rates and Congenital Cases, Indiana, 1998-2007



Total P&S Syphilis Rates by County, Indiana, 2007

