

# Georgia, 2007

## Primary and secondary syphilis

- **CASES:** Georgia reported 680 cases in 2007.
- **RATES:** Georgia ranked 4 among 50 states, DC, and 3 territories with 7.3 cases per 100,000 population compared to the total rate of 3.8 cases per 100,000 population.

## Rates of primary and secondary syphilis, by sex

- In Georgia, the rate among males was 13.6 per 100,000 population compared to the total male rate of 6.6 per 100,000.
- The rate among females was 1.1 per 100,000 compared to the total female rate of 1.1 per 100,000.

## Rates of primary and secondary syphilis, by race/ethnicity

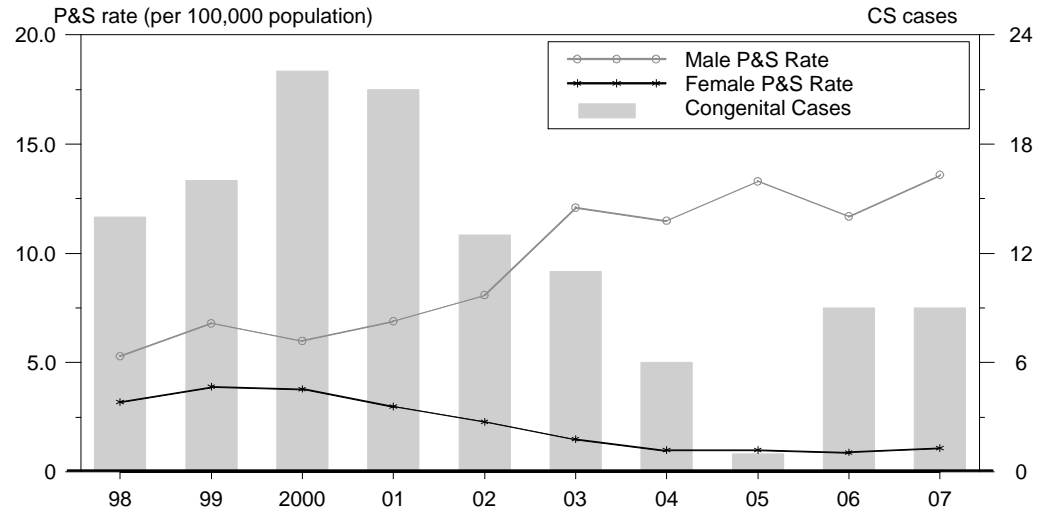
In Georgia, the race/ethnicity adjusted rates per 100,000 population were 2.3 among whites, 18.9 among blacks, 2.8 among Hispanics, 0.7 among Asian/Pacific Islanders, and 0.0 among American Indians/Alaska Natives.

- The rate among blacks was 8.2 times that of whites.
- The rate among Hispanics was 1.2 times that of whites.

## Congenital syphilis

- **CASES:** Georgia reported 9 cases in 2007.
- **RATES:** Georgia ranked 16 among 31 states, DC, and 2 territories reporting congenital syphilis cases with a rate of 6.5 cases per 100,000 live births compared to the total rate of 10.5 cases per 100,000.

## Syphilis: P&S Rates and Congenital Cases, Georgia, 1998-2007



## Total P&S Syphilis Rates by County, Georgia, 2007

