

Achieving Health Equity – Addressing the Social Determinants of Health



NATIONAL CENTER FOR CHRONIC DISEASE PREVENTION AND HEALTH PROMOTION



NATIONAL CENTER FOR CHRONIC DISEASE PREVENTION AND HEALTH PROMOTION

Our mission is to work with people and communities to **prevent chronic diseases and promote health and wellness for all.**

We work to make our vision of **healthy people living in healthy communities** a reality.

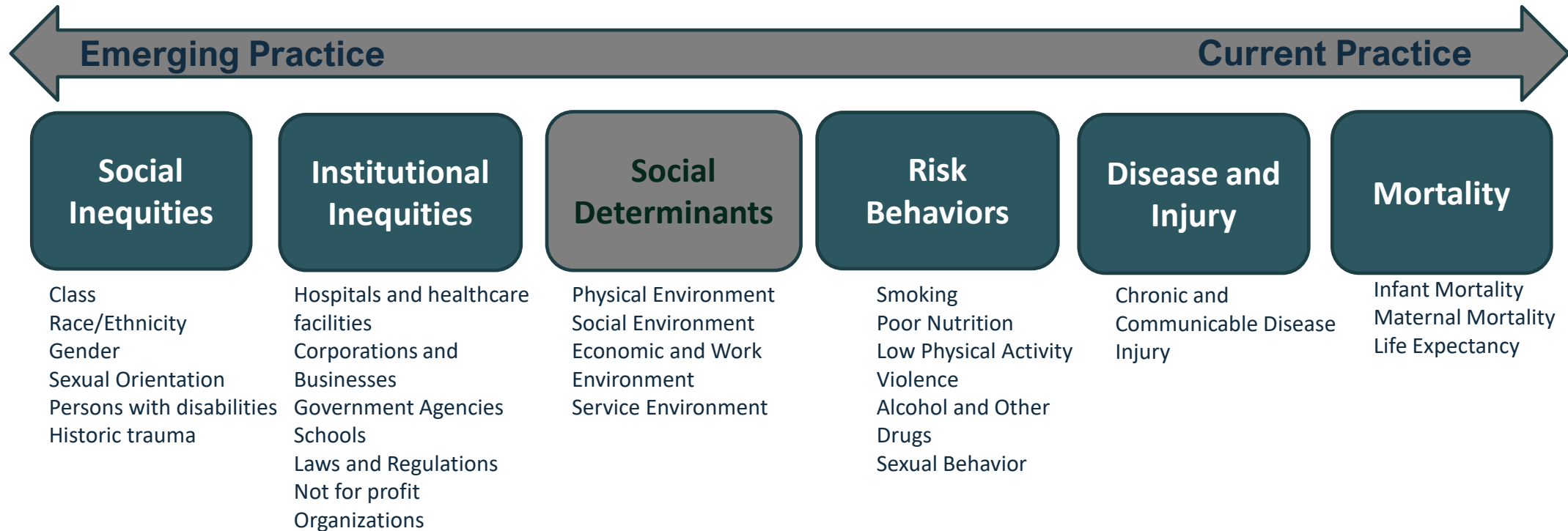
Addressing **social determinants of health** to achieve health equity is a strategic priority



Everyone has a fair and just opportunity to attain their highest level of health. Achieving this requires focused and ongoing societal efforts to address historical and contemporary injustices; overcome economic, social, and other obstacles to health and healthcare; and eliminate preventable health disparities.



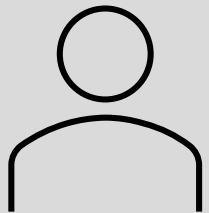
Addressing Social Determinants of Health is a Strategic Priority



SOCIAL DETERMINANTS VS SOCIAL NEEDS

Health Care System

Health-related Social Needs



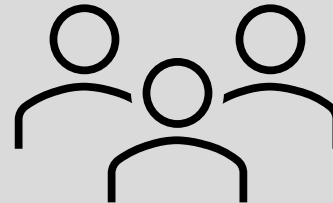
Addressing barriers to individual health:

- How do I get to the doctor?
- I don't have a place to live
- I lost my job
- I can't pay for food

Public Health

Social Determinants

Addressing policy, system, and environmental change to create healthy communities:



- Economic stability
- Education access and quality
- Neighborhood and built environment
- Health care access and quality
- Social and community context

ROLE OF PUBLIC HEALTH IN ADDRESSING SDOH

Convener

Foster multi-sectoral, multi-level partnerships

Integrator

Conduct surveillance and integrate data from multiple sources

Influencer

Lead approaches to develop upstream policies and solutions

Strong Foundation for Addressing Social Determinants of Health Across CDC

Research

Programs

Data and Tools

Policy



NCCDPHP History

REACH

Racial and Ethnic Approaches to Community Health



WISWOMAN™

Well-Integrated Screening and Evaluation
for WOMen Across the Nation

Healthy Tribes

TPWIC



Where Can NCCDPHP Lead?



Focus on primarily upstream, evidence-based, scalable interventions to advance health equity



Identify gaps in the evidence base, inform research priorities, and accelerate translation and implementation science to minimize health disparities



Foster multisectoral, multilevel partnerships to expand and scale interventions that address SDoH



Conduct high-quality surveillance and use datasets to identify disparities and equitably target funding, guidance, and technical assistance



Inform policymakers of the value in addressing SDoH to document and understand the economic and health impacts of interventions and policies on priority

A decorative horizontal bar at the bottom of the slide, consisting of a dark blue base with several colored segments: olive green, light blue, green, orange, cyan, yellow, and dark blue.

Focus Areas



**Food and Nutrition
Security**



Tobacco-Free Policy



Built Environment

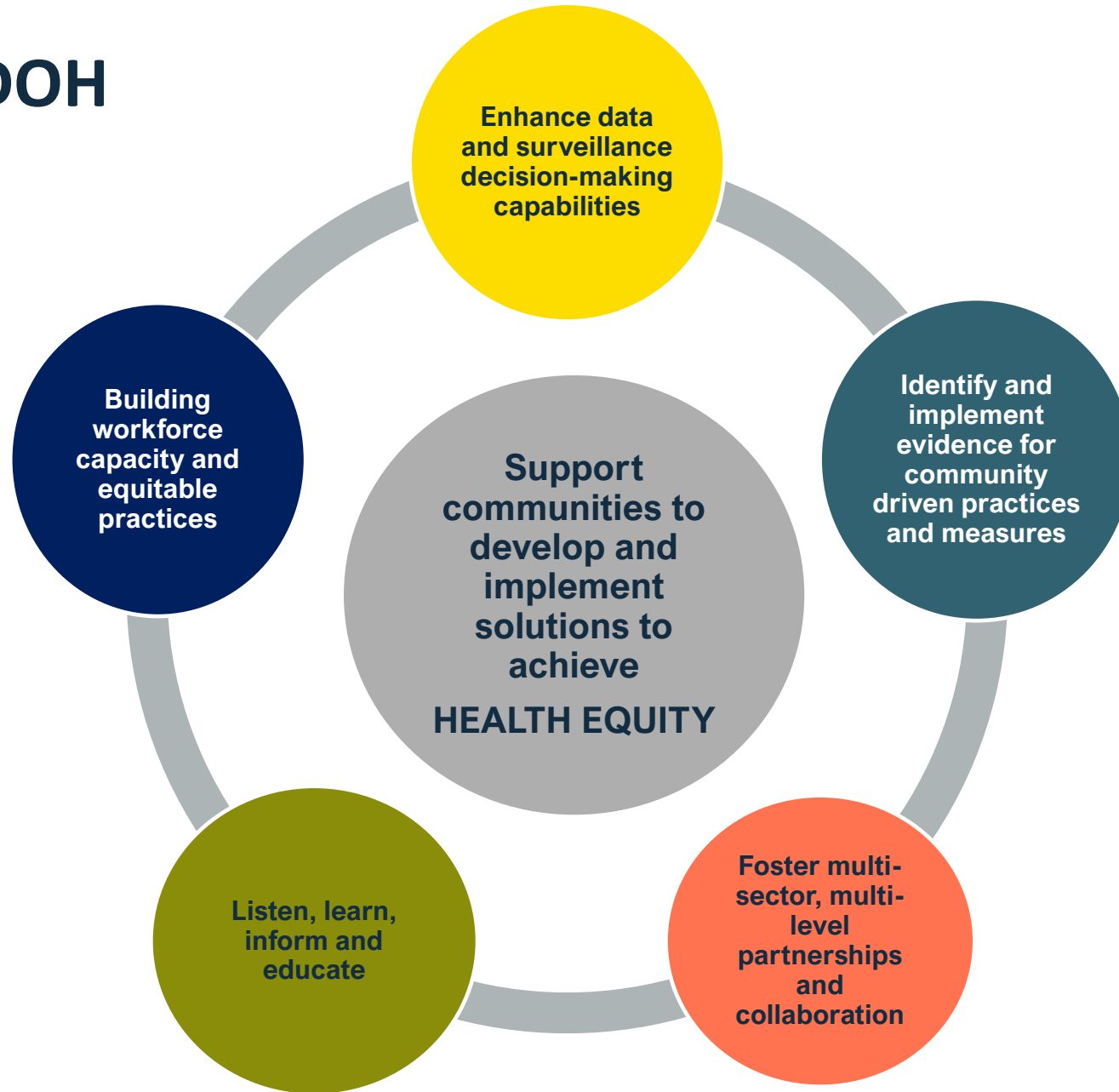


Social Connectedness



**Community-Clinical
Linkages**

NCCDPHP SDOH Approach



THE PATH FORWARD

- SDOH Accelerator NOFO
- Potential expansion of existing line item
- Healthy Tribes



DISCUSSION

- 1) What are the main social determinants that you feel are critical to work on?
 - 2) Do you have resources in place for these types of activities?
 - 3) What are the challenges and opportunities that you face in trying to address SDOH?
 - 4) What should we consider if we get additional SDOH resources vis a vis planning and implementation
-