

## Error processing SSI file

## Seasonal Influenza (Flu)

## Error processing SSI file

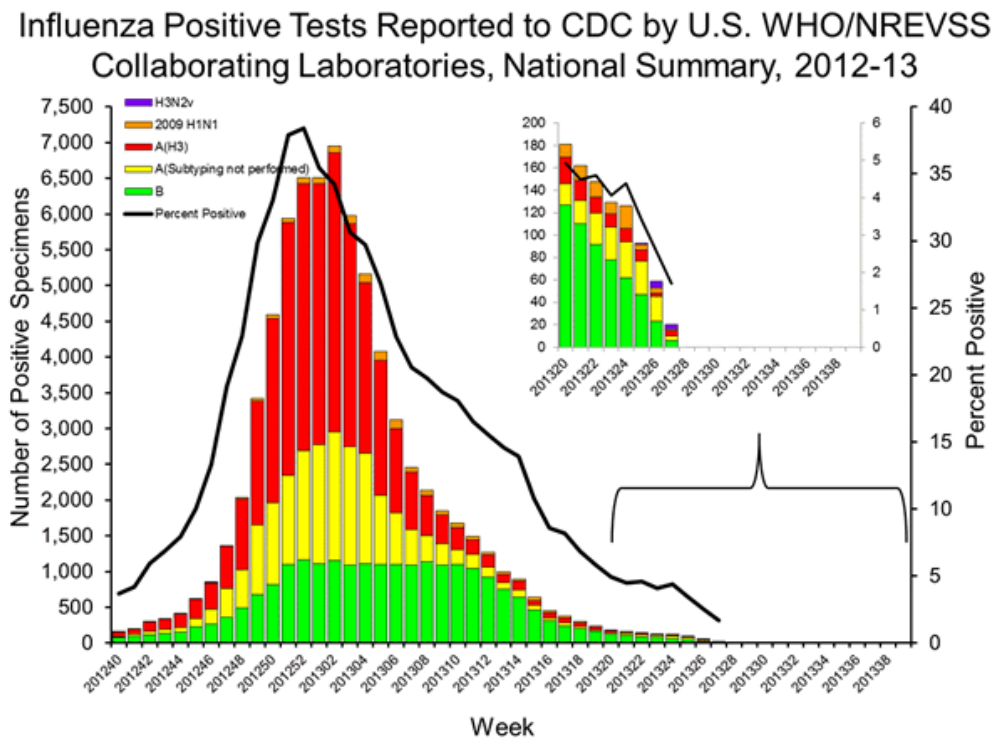


2012-2013 Influenza Season Week 27 ending July 6, 2013

*All data are preliminary and may change as more reports are received.*

## U.S. Virologic Surveillance:

WHO and NREVSS collaborating laboratories located in all 50 states and Washington, D.C. report to CDC the number of respiratory specimens tested for influenza and the number positive by influenza type and subtype. Region specific data are available at <http://gis.cdc.gov/grasp/fluview/fluportaldashboard.html>.



[View National and Regional Level Graphs and Data](#) | [View Chart Data](#) | [View Full Screen](#) | [View PowerPoint Presentation](#) 

## Novel Influenza A Viruses:

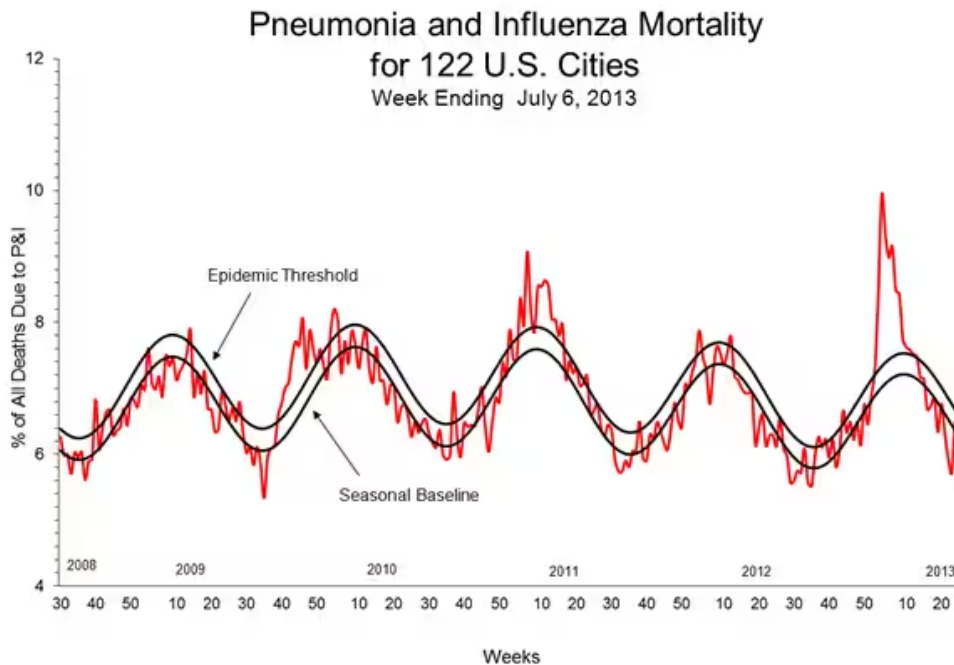
No new human infections with influenza A (H3N2) variant (H3N2v) virus were reported to CDC during week 27. A total of 12 H3N2v cases have been reported this summer. No hospitalizations or deaths have occurred. At this time no ongoing human-to-human transmission has been identified. Public health and agriculture officials are investigating the extent of disease among humans and swine, and additional cases may be identified as the investigation continues.


Because of reporting schedules, state totals posted by CDC may not always be consistent with those reported by state health departments. If there is a discrepancy between state and CDC case counts, data from the state health department should be used as the most accurate number.

Early identification and investigation of human infections with novel influenza A viruses is critical in order to evaluate the extent of the outbreak and possible human-to-human transmission. Additional information on influenza in swine, variant influenza infection in humans, and strategies to interact safely with livestock can be found at <http://www.cdc.gov/flu/swineflu/h3n2v-cases.htm>.

### Pneumonia and Influenza (P&I) Mortality Surveillance:

During week 27, 5.8% of all deaths reported through the 122-Cities Mortality Reporting System were due to P&I. This percentage was below the epidemic threshold of 6.4% for week 27.



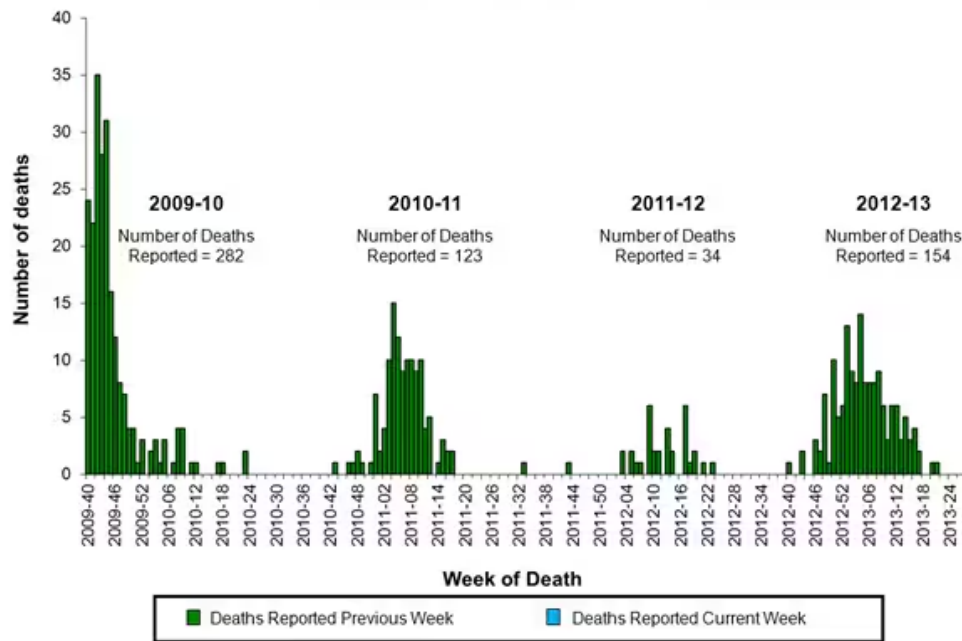
[View Full Screen](#) | [View PowerPoint Presentation](#) 

### Influenza-Associated Pediatric Mortality:

No influenza-associated pediatric deaths were reported to CDC during week 27. A total of 154 influenza-associated pediatric deaths have been reported during the 2012-2013 season.

Additional data can be found at: <http://gis.cdc.gov/GRASP/Fluview/PedFluDeath.html>.

## Number of Influenza-Associated Pediatric Deaths by Week of Death: 2009-10 season to present



[View Interactive Application](#) | [View Full Screen](#) | [View PowerPoint Presentation](#) 

### Influenza-Associated Hospitalizations:

The Influenza Hospitalization Surveillance Network (FluSurv-NET) conducts all age population-based surveillance for laboratory-confirmed influenza-related hospitalizations in select counties in the Emerging Infections Program (EIP) states and Influenza Hospitalization Surveillance Project (IHSP) states. Additional FluSurv-NET data can be found at: <http://gis.cdc.gov/GRASP/Fluview/FluHospRates.html> and <http://gis.cdc.gov/grasp/fluview/FluHospChars.html>.

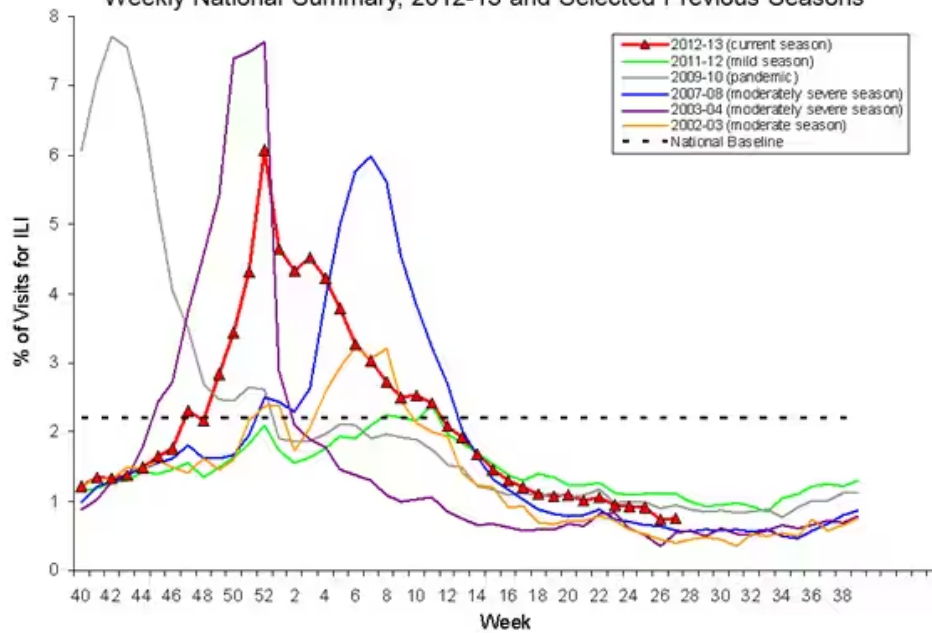
### Outpatient Illness Surveillance:

Nationwide during week 27, 0.8% of patient visits reported through the U.S. Outpatient Influenza-like Illness Surveillance Network (ILINet) were due to influenza-like illness (ILI). This percentage is below the national baseline of 2.2%.

*(ILI is defined as fever (temperature of 100°F [37.8°C] or greater) and cough and/or sore throat.)*

Additional data are available at <http://gis.cdc.gov/grasp/fluview/fluportaldashboard.html>.

Percentage of Visits for Influenza-like Illness (ILI) Reported by the U.S. Outpatient Influenza-like Illness Surveillance Network (ILINet), Weekly National Summary, 2012-13 and Selected Previous Seasons



[View National and Regional Level Graphs and Data](#) | [View Chart Data](#) | [View Full Screen](#) | [View PowerPoint Presentation](#)

## Additional National and International Influenza Surveillance Information

**FluView Interactive:** This season, FluView includes enhanced web-based interactive applications that can provide dynamic visuals of the influenza data collected and analyzed by CDC. These FluView Interactive applications allow people to create customized, visual interpretations of influenza data, as well as comparisons across flu seasons, regions, age groups and a variety of other demographics. To access these tools visit <http://www.cdc.gov/flu/weekly/fluviewinteractive.htm>.

**U.S. State and local influenza surveillance:** Click on a jurisdiction below to access the latest local influenza information.

- |                                |                               |                                |                                      |                               |
|--------------------------------|-------------------------------|--------------------------------|--------------------------------------|-------------------------------|
| <a href="#">Alabama</a>        | <a href="#">Alaska</a>        | <a href="#">Arizona</a>        | <a href="#">Arkansas</a>             | <a href="#">California</a>    |
| <a href="#">Colorado</a>       | <a href="#">Connecticut</a>   | <a href="#">Delaware</a>       | <a href="#">District of Columbia</a> | <a href="#">Florida</a>       |
| <a href="#">Georgia</a>        | <a href="#">Hawaii</a>        | <a href="#">Idaho</a>          | <a href="#">Illinois</a>             | <a href="#">Indiana</a>       |
| <a href="#">Iowa</a>           | <a href="#">Kansas</a>        | <a href="#">Kentucky</a>       | <a href="#">Louisiana</a>            | <a href="#">Maine</a>         |
| <a href="#">Maryland</a>       | <a href="#">Massachusetts</a> | <a href="#">Michigan</a>       | <a href="#">Minnesota</a>            | <a href="#">Mississippi</a>   |
| <a href="#">Missouri</a>       | <a href="#">Montana</a>       | <a href="#">Nebraska</a>       | <a href="#">Nevada</a>               | <a href="#">New Hampshire</a> |
| <a href="#">New Jersey</a>     | <a href="#">New Mexico</a>    | <a href="#">New York</a>       | <a href="#">North Carolina</a>       | <a href="#">North Dakota</a>  |
| <a href="#">Ohio</a>           | <a href="#">Oklahoma</a>      | <a href="#">Oregon</a>         | <a href="#">Pennsylvania</a>         | <a href="#">Rhode Island</a>  |
| <a href="#">South Carolina</a> | <a href="#">South Dakota</a>  | <a href="#">Tennessee</a>      | <a href="#">Texas</a>                | <a href="#">Utah</a>          |
| <a href="#">Vermont</a>        | <a href="#">Virginia</a>      | <a href="#">Washington</a>     | <a href="#">West Virginia</a>        | <a href="#">Wisconsin</a>     |
| <a href="#">Wyoming</a>        | <a href="#">New York City</a> | <a href="#">Virgin Islands</a> |                                      |                               |

**Google Flu Trends:** Google Flu Trends uses aggregated Google search data in a model created in collaboration with CDC to estimate influenza activity in the United States. For more information and activity estimates from the U.S. and worldwide, see <http://www.google.org/flutrends/>

**World Health Organization:** Additional influenza surveillance information from participating WHO member nations is available through [FluNet](#) and the [Global Epidemiology Reports](#).

**WHO Collaborating Centers for Influenza** located in [Australia](#), [China](#), [Japan](#), and the [United Kingdom](#).

**Europe:** for the most recent influenza surveillance information from Europe, please see WHO/Europe at <http://www.euroflu.org/index.php> and visit the European Centre for Disease Prevention and Control at [http://ecdc.europa.eu/en/publications/surveillance\\_reports/influenza/Pages/weekly\\_influenza\\_surveillance\\_overview.aspx](http://ecdc.europa.eu/en/publications/surveillance_reports/influenza/Pages/weekly_influenza_surveillance_overview.aspx)

**Public Health Agency of Canada:** The most up-to-date influenza information from Canada is available at <http://www.phac-aspc.gc.ca/fluwatch/>

**Health Protection Agency (United Kingdom):** The most up-to-date influenza information from the United Kingdom is available at <http://www.hpa.org.uk/Topics/InfectiousDiseases/InfectionsAZ/SeasonalInfluenza/>

**Any links provided to non-Federal organizations are provided solely as a service to our users. These links do not constitute an endorsement of these organizations or their programs by CDC or the Federal Government, and none should be inferred. CDC is not responsible for the content of the individual organization web pages found at these links.**

---

A description of surveillance methods is available at: <http://www.cdc.gov/flu/weekly/overview.htm>

#### **Error processing SSI file**

Page last reviewed: July 12, 2013

Page last updated: July 12, 2013

Content source: [Centers for Disease Control and Prevention](#)

---

Centers for Disease Control and Prevention 1600 Clifton Road Atlanta, GA 30329-4027, USA  
800-CDC-INFO (800-232-4636) TTY: (888) 232-6348 - [Contact CDC-INFO](#)

