

Error processing SSI file

Seasonal Influenza (Flu)

Error processing SSI file



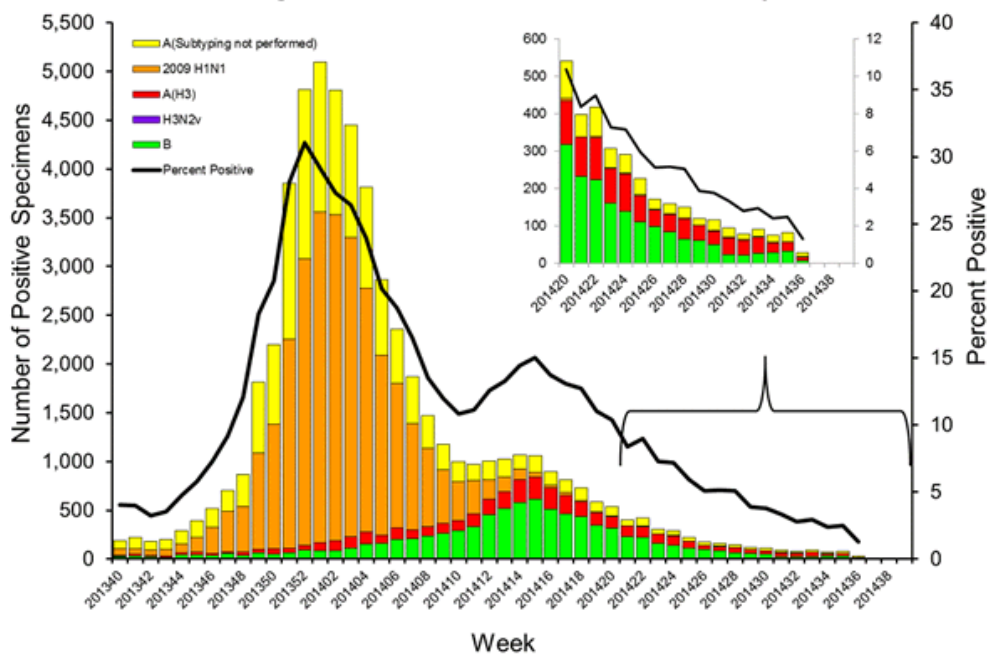
2013-2014 Influenza Season Week 36 ending September 6, 2014

All data are preliminary and may change as more reports are received.

U.S. Virologic Surveillance:

WHO and NREVSS collaborating laboratories located in all 50 states and Washington, D.C. report to CDC the number of respiratory specimens tested for influenza and the number positive by influenza type and subtype. Region specific data are available at <http://gis.cdc.gov/grasp/fluview/fluportaldashboard.html>.

Influenza Positive Tests Reported to CDC by U.S. WHO/NREVSS Collaborating Laboratories, National Summary, 2013-14



[View National and Regional Level Graphs and Data](#) | [View Chart Data](#) | [View Full Screen](#) | [View PowerPoint Presentation](#) 

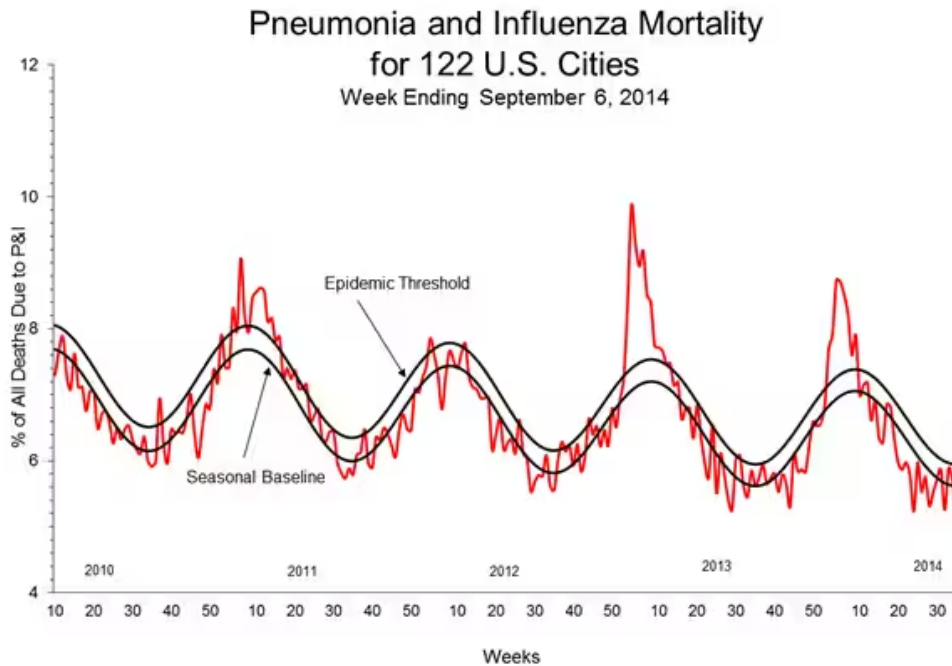
Novel Influenza A Viruses:


No additional human infections with novel influenza A viruses were reported during week 36. A total of two H3N2v cases have been reported in 2014 and are not epidemiologically linked.

Early identification and investigation of human infections with novel influenza A viruses is critical in order to evaluate the extent of the outbreak and possible human-to-human transmission. Additional information on influenza in swine, variant influenza infection in humans, and strategies to interact safely with livestock can be found at <http://www.cdc.gov/flu/swineflu/h3n2v-cases.htm>.

Pneumonia and Influenza (P&I) Mortality Surveillance:

During week 36, 5.7 % of all deaths reported through the 122-Cities Mortality Reporting System were due to P&I. This percentage was below the epidemic threshold of 6.0% for week 36.



[View Full Screen](#) | [View PowerPoint Presentation](#) 

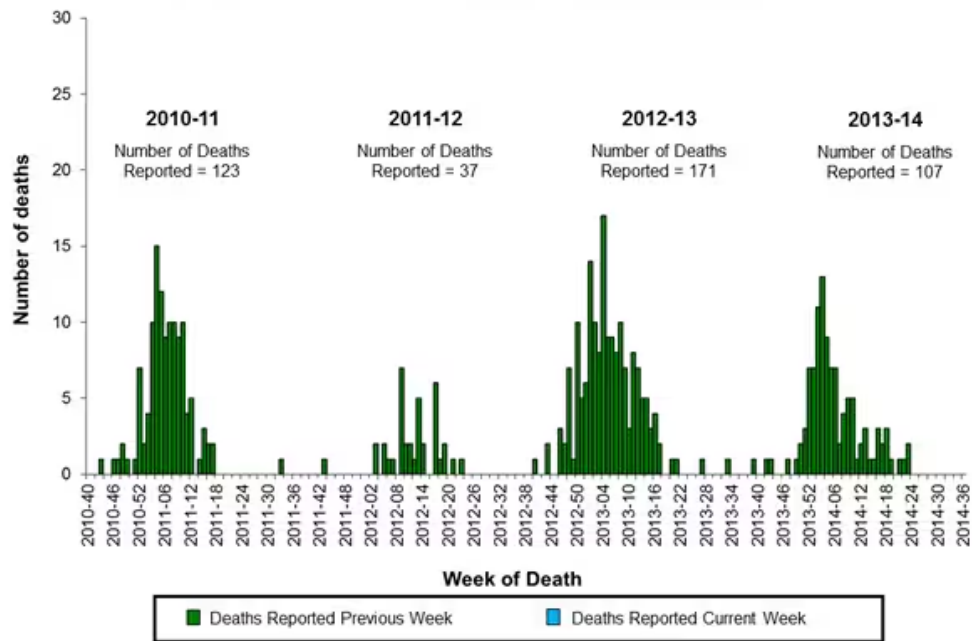
Influenza-Associated Pediatric Mortality:

No influenza-associated pediatric deaths that occurred during the 2013-14 season were reported to CDC during week 36. A total of 107 influenza-associated pediatric deaths have been reported during the 2013-2014 season.

One influenza-associated pediatric death occurring in the 2008-09 influenza season was reported during week 36. This brings the total number of deaths reported during the 2008-09 season to 137.

Additional data can be found at: <http://gis.cdc.gov/GRASP/Fluview/PedFluDeath.html>.

Number of Influenza-Associated Pediatric Deaths by Week of Death: 2010-11 season to present



[View Interactive Application](#) | [View Full Screen](#) | [View PowerPoint Presentation](#) 

Influenza-Associated Hospitalizations:

The Influenza Hospitalization Surveillance Network (FluSurv-NET) conducts all age population-based surveillance for laboratory-confirmed influenza-related hospitalizations in select counties in the Emerging Infections Program (EIP) states and Influenza Hospitalization Surveillance Project (IHSP) states. Additional FluSurv-NET data are available at: <http://gis.cdc.gov/GRASP/Fluview/FluHospRates.html> and <http://gis.cdc.gov/grasp/fluview/FluHospChars.html>.

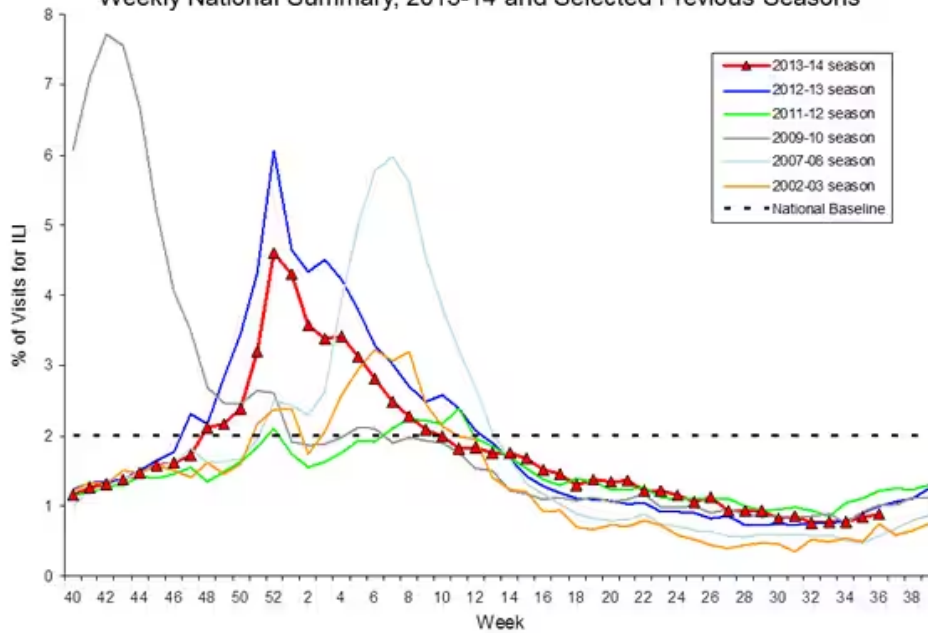
Outpatient Illness Surveillance:


Nationwide during week 36, 0.9% of patient visits reported through the U.S. Outpatient Influenza-like Illness Surveillance Network (ILINet) were due to influenza-like illness (ILI). This percentage is below the national baseline of 2.0%.

(ILI is defined as fever (temperature of 100°F [37.8°C] or greater) and cough and/or sore throat.)

Additional data are available at <http://gis.cdc.gov/grasp/fluview/fluportaldashboard.html>.

Percentage of Visits for Influenza-like Illness (ILI) Reported by the U.S. Outpatient Influenza-like Illness Surveillance Network (ILINet), Weekly National Summary, 2013-14 and Selected Previous Seasons




[View National and Regional Level Graphs and Data](#) | [View Chart Data](#) | [View Full Screen](#) | [View PowerPoint Presentation](#) 

Additional National and International Influenza Surveillance Information

FluView Interactive: FluView includes enhanced web-based interactive applications that can provide dynamic visuals of the influenza data collected and analyzed by CDC. These FluView Interactive applications allow people to create customized, visual interpretations of influenza data, as well as make comparisons across flu seasons, regions, age groups and a variety of other demographics. To access these tools visit <http://www.cdc.gov/flu/weekly/fluviewinteractive.htm>.

U.S. State and local influenza surveillance: Click on a jurisdiction below to access the latest local influenza information.

- | | | | | |
|--|---|--|--|---|
| Alabama  | Alaska  | Arizona  | Arkansas  | California  |
| Colorado  | Connecticut  | Delaware  | District of Columbia  | Florida  |
| Georgia  | Hawaii  | Idaho  | Illinois  | Indiana  |
| Iowa  | Kansas  | Kentucky  | Louisiana  | Maine  |
| Maryland  | Massachusetts  | Michigan  | Minnesota  | Mississippi  |
| Missouri  | Montana  | Nebraska  | Nevada  | New Hampshire  |
| New Jersey  | New Mexico  | New York  | North Carolina  | North Dakota  |
| Ohio  | Oklahoma  | Oregon  | Pennsylvania  | Rhode Island  |
| South Carolina  | South Dakota  | Tennessee  | Texas  | Utah  |
| Vermont  | Virginia  | Washington   | West Virginia  | Wisconsin  |
| Wyoming  | New York City  | Virgin Islands  | | |

Google Flu Trends: Google Flu Trends uses aggregated Google search data in a model created in collaboration with CDC to estimate influenza activity in the United States. For more information and activity estimates from the U.S. and worldwide, see <http://www.google.org/flutrends/> 

World Health Organization: Additional influenza surveillance information from participating WHO member nations is available through [FluNet](#) and the [Global Epidemiology Reports](#).

WHO Collaborating Centers for Influenza located in [Australia](#), [China](#), [Japan](#), the [United Kingdom](#), and the [United States](#) (CDC in Atlanta, Georgia).

Europe: for the most recent influenza surveillance information from Europe, please see WHO/Europe at <http://www.euroflu.org/index.php> and visit the European Centre for Disease Prevention and Control at http://ecdc.europa.eu/en/publications/surveillance_reports/influenza/Pages/weekly_influenza_surveillance_overview.aspx

Public Health Agency of Canada: The most up-to-date influenza information from Canada is available at <http://www.phac-aspc.gc.ca/fluwatch/>

Health Protection Agency (United Kingdom): The most up-to-date influenza information from the United Kingdom is available at <http://www.hpa.org.uk/Topics/InfectiousDiseases/InfectionsAZ/SeasonalInfluenza/>

Any links provided to non-Federal organizations are provided solely as a service to our users. These links do not constitute an endorsement of these organizations or their programs by CDC or the Federal Government, and none should be inferred. CDC is not responsible for the content of the individual organization web pages found at these links.

A description of surveillance methods is available at: <http://www.cdc.gov/flu/weekly/overview.htm>

Error processing SSI file

Page last reviewed: September 12, 2014

Page last updated: September 12, 2014

Content source: [Centers for Disease Control and Prevention](#)

Centers for Disease Control and Prevention 1600 Clifton Road Atlanta, GA 30329-4027, USA
800-CDC-INFO (800-232-4636) TTY: (888) 232-6348 - [Contact CDC-INFO](#)

