

Error processing SSI file



Seasonal Influenza (Flu).

Error processing SSI file



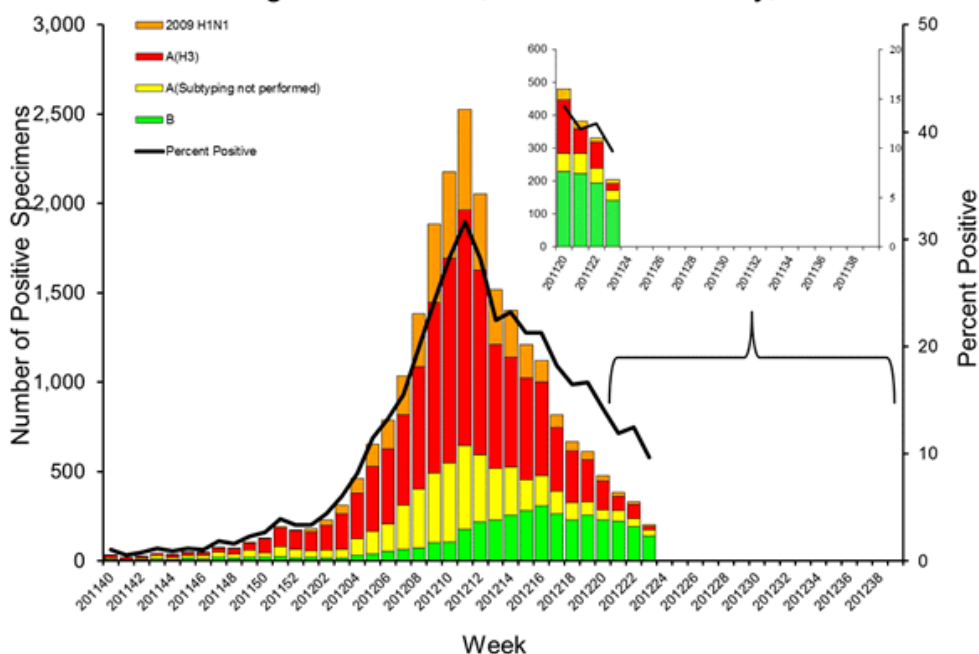
2011-2012 Influenza Season Week 23 ending June 9, 2012

All data are preliminary and may change as more reports are received.

U.S. Virologic Surveillance:

WHO and NREVSS collaborating laboratories located in all 50 states and Washington, D.C. report to CDC the number of respiratory specimens tested for influenza and the number positive by influenza type and subtype. Region specific data can be found at <http://gis.cdc.gov/grasp/fluview/fluportaldashboard.html>.

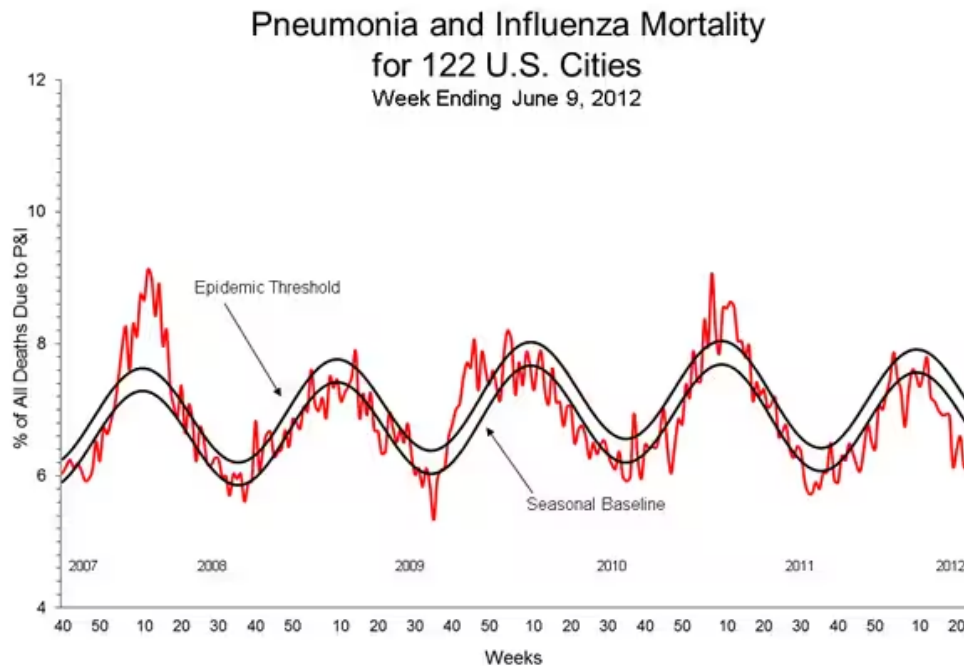
Influenza Positive Tests Reported to CDC by U.S. WHO/NREVSS
Collaborating Laboratories, National Summary, 2011-12



[View National and Regional Level Graphs and Data](#) | [View Chart Data](#) | [View Full Screen](#) | [View PowerPoint Presentation](#)

Pneumonia and Influenza (P&I) Mortality Surveillance:

During week 23, 6.3% of all deaths reported through the 122-Cities Mortality Reporting System were due to P&I. This percentage was below the epidemic threshold of 7.1% for week 23.

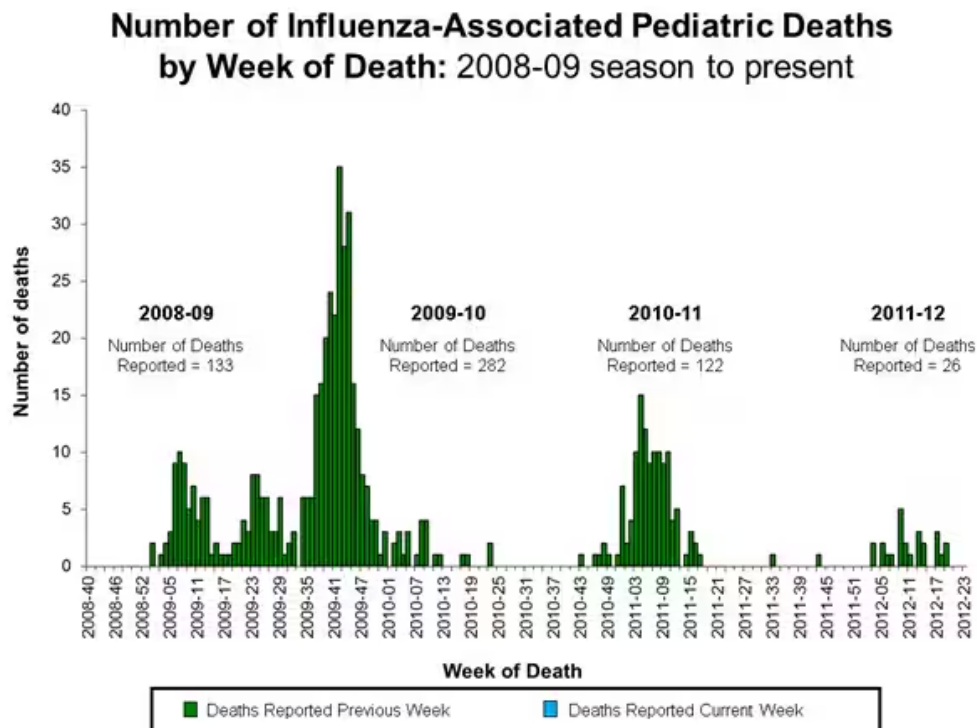


[View Full Screen](#) | [View PowerPoint Presentation](#) 

Influenza-Associated Pediatric Mortality:

No influenza-associated pediatric deaths were reported to CDC during week 23. A total of 26 influenza-associated pediatric deaths have been reported during the 2011-2012 season. Additional data can be found at:

<http://gis.cdc.gov/GRASP/Fluview/PedFluDeath.html>.



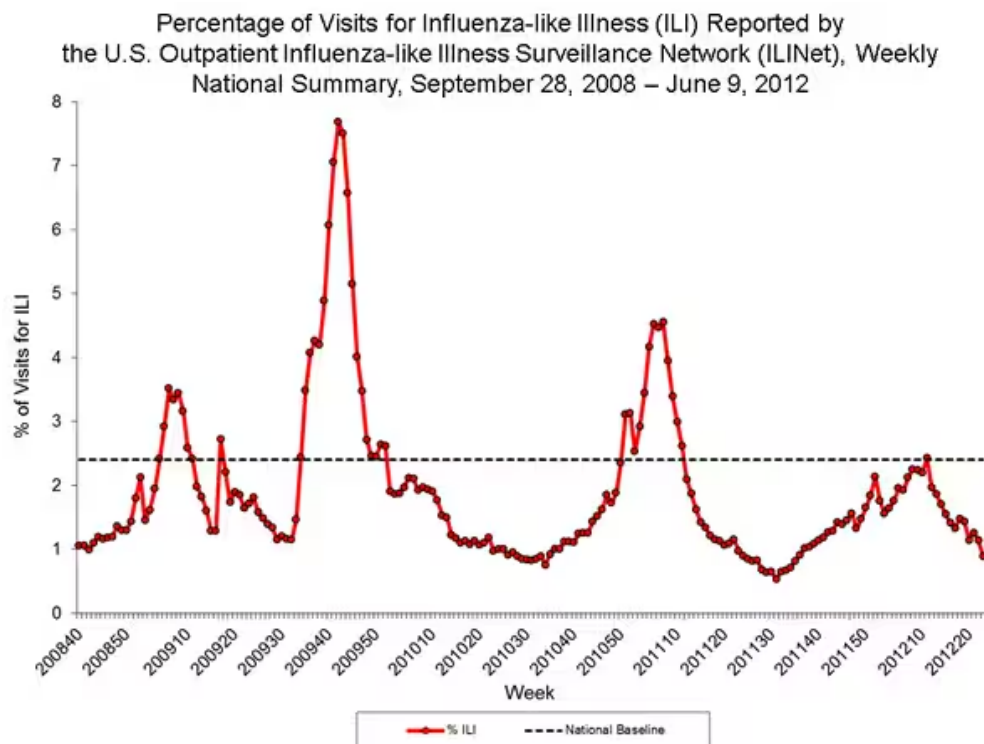
[View Interactive Application](#) | [View Full Screen](#) | [View PowerPoint Presentation](#) 

Influenza-Associated Hospitalizations:

The Influenza Surveillance Network (FluSurv-NET) conducts all age population-based surveillance for laboratory-confirmed influenza-related hospitalizations in select counties in the Emerging Infections Program (EIP) states and Influenza Hospitalization Surveillance Project (IHSP) states. Additional FluSurv-NET data can be found at: <http://gis.cdc.gov/GRASP/Fluview/FluHospRates.html>.


Outpatient Illness Surveillance:



Nationwide during week 23, 0.9% of patient visits reported through the U.S. Outpatient Influenza-like Illness Surveillance Network (ILINet) were due to influenza-like illness (ILI). This percentage is below the national baseline of 2.4%. (*ILI is defined as fever (temperature of 100°F [37.8°C] or greater) and cough and/or sore throat.*) Region specific data can be found at <http://gis.cdc.gov/grasp/fluview/fluportaldashboard.html>.






[View National and Regional Level Graphs and Data](#) | [View Chart Data](#) | [View Full Screen](#) | [View PowerPoint Presentation](#) 

Additional National and International Influenza Surveillance Information

Google Flu Trends: Google Flu Trends uses aggregated Google search data in a model created in collaboration with CDC to estimate influenza activity in the United States. For more information and activity estimates from the U.S. and worldwide, see <http://www.google.org/flutrends/> 

Europe: for the most recent influenza surveillance information from Europe, please see WHO/Europe at <http://www.euroflu.org/index.php>  and visit the European Centre for Disease Prevention and Control at http://ecdc.europa.eu/en/publications/surveillance_reports/influenza/Pages/weekly_influenza_surveillance_overview.aspx 

Public Health Agency of Canada: The most up-to-date influenza information from Canada is available at <http://www.phac-aspc.gc.ca/fluwatch/> 

World Health Organization FluNet: Additional influenza surveillance information from participating WHO member nations is available at [FluNet](#)  and the [Global Epidemiology Reports](#) 

A description of surveillance methods is available at: <http://www.cdc.gov/flu/weekly/overview.htm>

Error processing SSI file

Page last reviewed: June 15, 2012

Page last updated: June 15, 2012

Content source: [Centers for Disease Control and Prevention](#)

Centers for Disease Control and Prevention 1600 Clifton Road Atlanta, GA 30329-4027, USA
800-CDC-INFO (800-232-4636) TTY: (888) 232-6348 - [Contact CDC-INFO](#)

