

Error processing SSI file

Seasonal Influenza (Flu)

Error processing SSI file



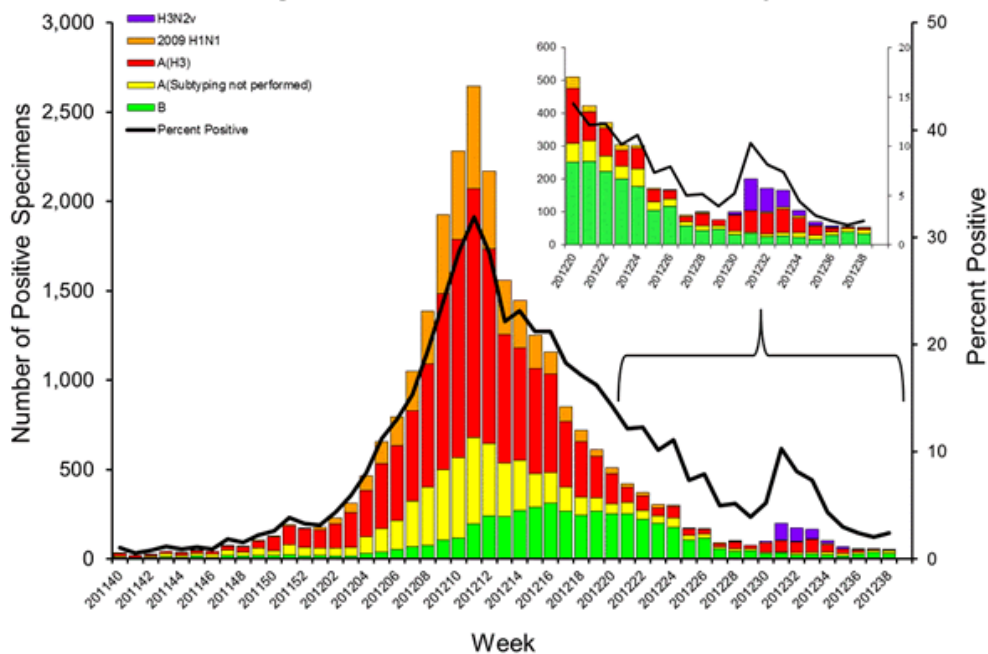
2011-2012 Influenza Season Week 38 ending September 22, 2012

All data are preliminary and may change as more reports are received.

U.S. Virologic Surveillance:

WHO and NREVSS collaborating laboratories located in all 50 states and Washington, D.C. report to CDC the number of respiratory specimens tested for influenza and the number positive by influenza type and subtype. Region specific data can be found at <http://gis.cdc.gov/grasp/fluview/fluportaldashboard.html>.

Influenza Positive Tests Reported to CDC by U.S. WHO/NREVSS Collaborating Laboratories, National Summary, 2011-12



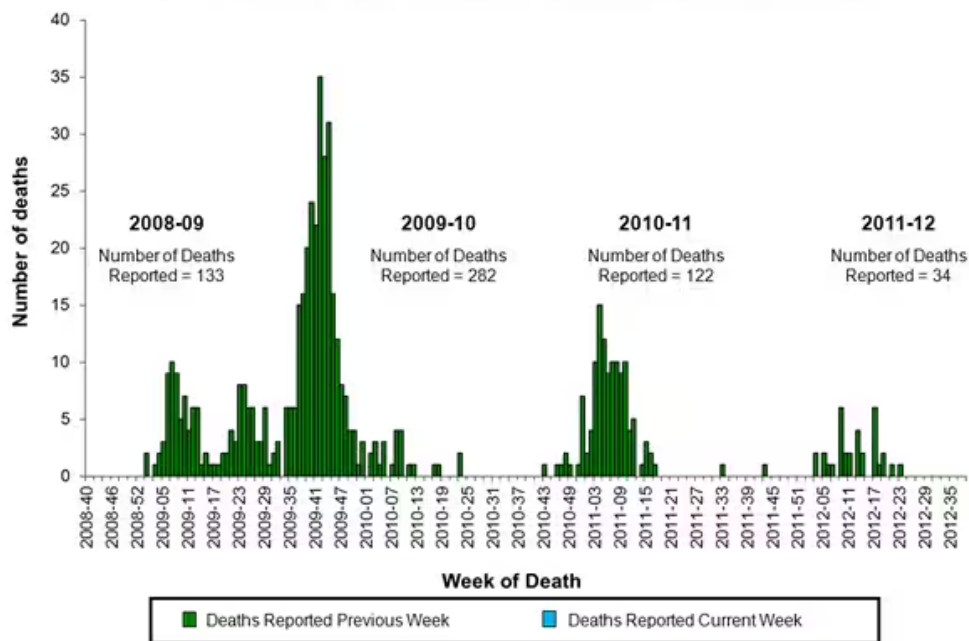
[View National and Regional Level Graphs and Data](#) | [View Chart Data](#) | [View Full Screen](#) | [View PowerPoint Presentation](#) 

Novel Influenza A Virus:

From July 12 through October 4, 2012, a total of 306 infections with influenza A (H3N2) variant (H3N2v) viruses have been reported from ten states. No new cases been reported since last week's update. Cumulative totals by state since July 12 are: Hawaii [1], Illinois [4], Indiana [138], Maryland [12], Michigan [6], Minnesota [4], Ohio [107], Pennsylvania [11], West Virginia [3], and Wisconsin [20]. Sixteen H3N2v-associated hospitalizations and one H3N2v-associated death have been reported. The vast majority of cases have occurred after prolonged swine exposure, though instances of likely human-to-human transmission have been identified. At this time no ongoing human-to-human transmission has been identified.

As a result of enhanced surveillance activities for H3N2v, one infection with an influenza A (H1N1) variant (H1N1v) virus and three infections with influenza A (H1N2) variant (H1N2v) virus have been detected since July 2012, bringing the total

Number of Influenza-Associated Pediatric Deaths by Week of Death: 2008-09 season to present



[View Interactive Application](#) | [View Full Screen](#) | [View PowerPoint Presentation](#) 

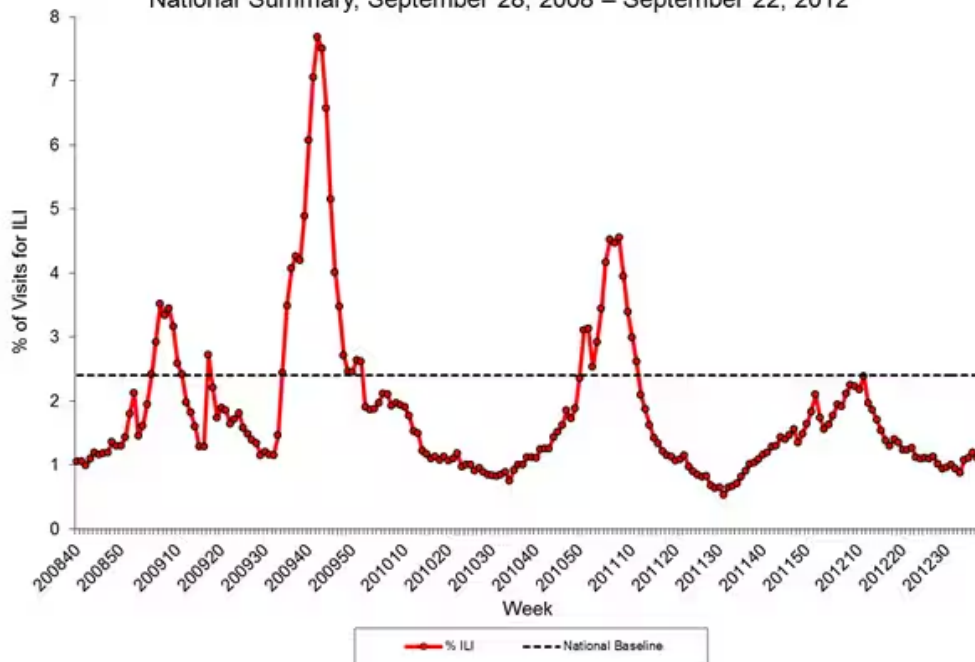
Influenza-Associated Hospitalizations:

The Influenza Hospitalization Surveillance Network (FluSurv-NET) conducts all age population-based surveillance for laboratory-confirmed influenza-related hospitalizations in select counties in the Emerging Infections Program (EIP) states and Influenza Hospitalization Surveillance Project (IHSP) states. Additional FluSurv-NET data can be found at: <http://gis.cdc.gov/GRASP/Fluview/FluHospRates.html>.

Outpatient Illness Surveillance:

Nationwide during week 38, 1.0% of patient visits reported through the U.S. Outpatient Influenza-like Illness Surveillance Network (ILINet) were due to influenza-like illness (ILI). This percentage is below the national baseline of 2.4%. (*ILI is defined as fever (temperature of 100F [37.8C] or greater) and cough and/or sore throat.*) Region specific data can be found at <http://gis.cdc.gov/grasp/fluview/fluportaldashboard.html>.

Percentage of Visits for Influenza-like Illness (ILI) Reported by the U.S. Outpatient Influenza-like Illness Surveillance Network (ILINet), Weekly National Summary, September 28, 2008 – September 22, 2012



[View National and Regional Level Graphs and Data](#) | [View Chart Data](#) | [View Full Screen](#) | [View PowerPoint Presentation](#)

Additional National and International Influenza Surveillance Information

Google Flu Trends: Google Flu Trends uses aggregated Google search data in a model created in collaboration with CDC to estimate influenza activity in the United States. For more information and activity estimates from the U.S. and worldwide, see <http://www.google.org/flutrends/>

Europe: for the most recent influenza surveillance information from Europe, please see WHO/Europe at <http://www.euroflu.org/index.php> and visit the European Centre for Disease Prevention and Control at http://ecdc.europa.eu/en/publications/surveillance_reports/influenza/Pages/weekly_influenza_surveillance_overview.aspx

Public Health Agency of Canada: The most up-to-date influenza information from Canada is available at <http://www.phac-aspc.gc.ca/fluwatch/>

World Health Organization FluNet: Additional influenza surveillance information from participating WHO member nations is available at [FluNet](#) and the [Global Epidemiology Reports](#)

A description of surveillance methods is available at: <http://www.cdc.gov/flu/weekly/overview.htm>

Error processing SSI file

Page last reviewed: September 28, 2012

Page last updated: September 28, 2012

Content source: [Centers for Disease Control and Prevention](#)

Centers for Disease Control and Prevention 1600 Clifton Road Atlanta, GA 30329-4027, USA
800-CDC-INFO (800-232-4636) TTY: (888) 232-6348 - [Contact CDC-INFO](#)

