

Error processing SSI file

[Skip directly to search](#) [Skip directly to A to Z list](#) [Skip directly to site content](#)

[CDC Home](#)



Centers for Disease Control and Prevention

CDC 24/7: Saving Lives. Protecting People.™

[CDC 24/7: Saving Lives. Protecting](#)

[People.™](#)

<input type="text" value="SEARCH"/>	Search The CDC
	<input type="button" value="SEARCH"/>

Seasonal Influenza (Flu)

Error processing SSI file

Error processing SSI file

Error processing SSI file

- -
- -
- -
- -

Error processing SSI file



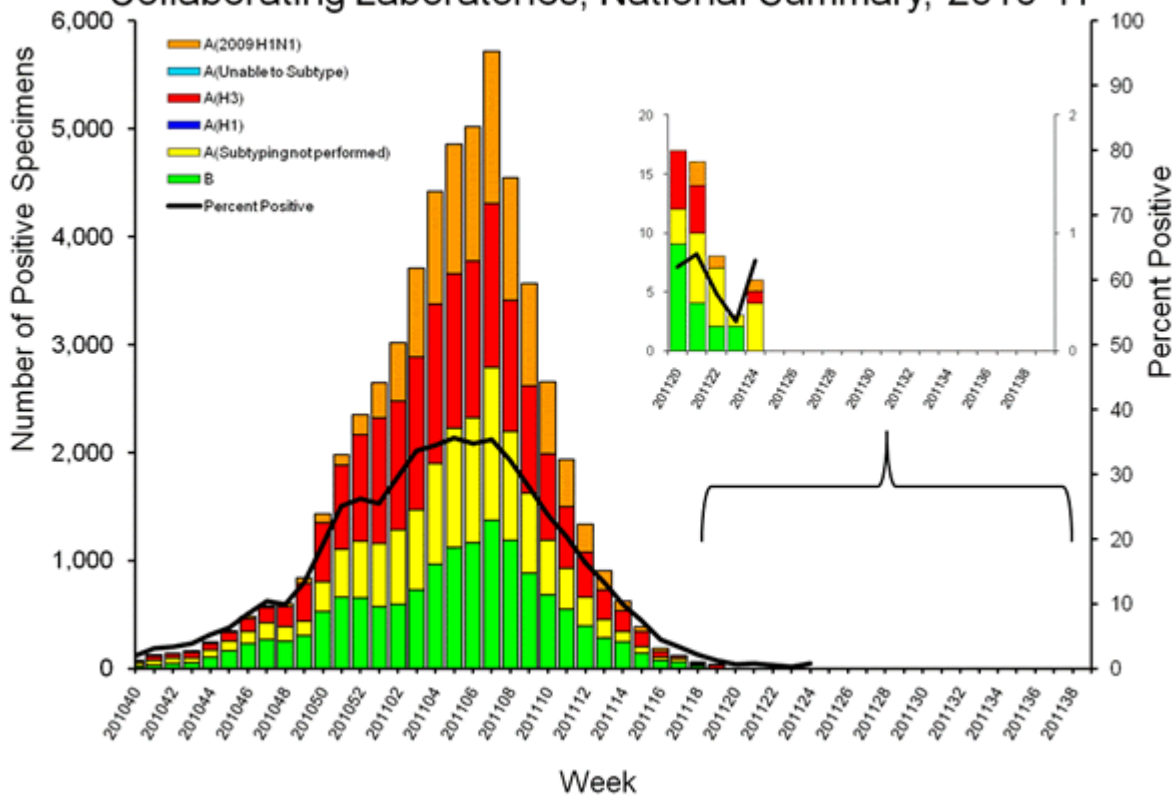
2010-2011 Influenza Season Week 24 ending June 18, 2011

All data are preliminary and may change as more reports are received.

U.S. Virologic Surveillance:

WHO and NREVSS collaborating laboratories located in all 50 states and Washington, D.C. report to CDC the number of respiratory specimens tested for influenza and the number positive by influenza type and subtype.

Influenza Positive Tests Reported to CDC by U.S. WHO/NREVSS Collaborating Laboratories, National Summary, 2010-11

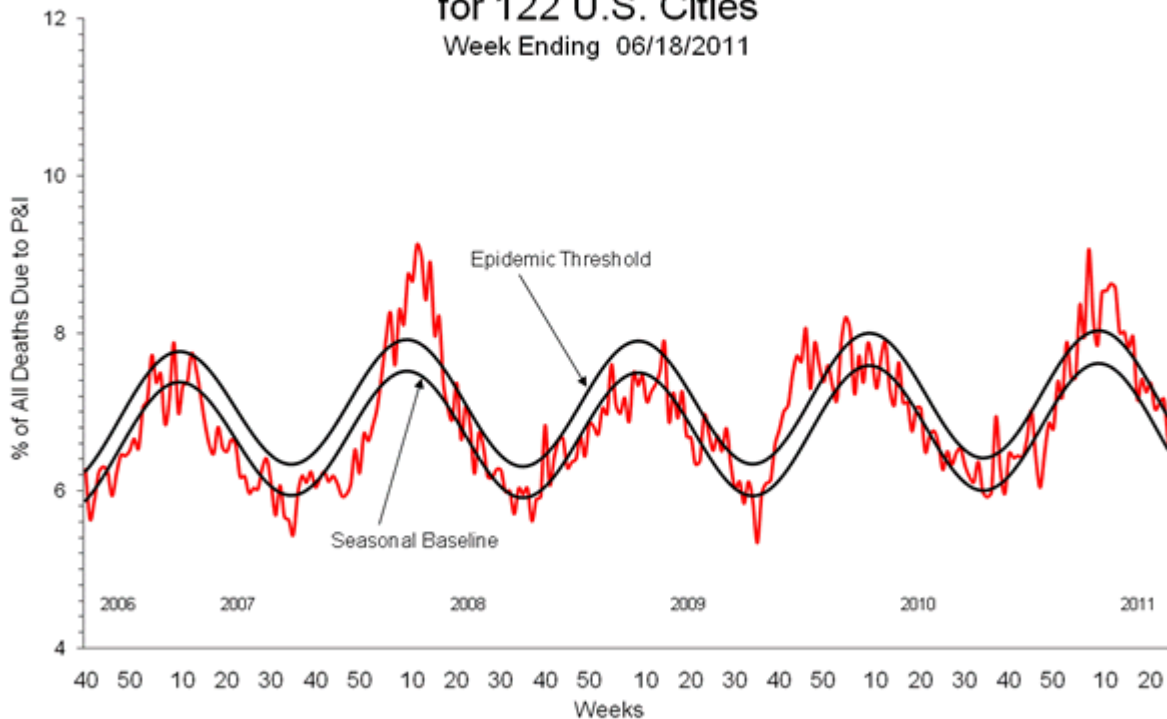


[View Chart Data](#) | [View Full Screen](#) | [View PowerPoint Presentation](#)

[Pneumonia and Influenza \(P&I\) Mortality Surveillance](#)

During week 24, 6.6% of all deaths reported through the 122-Cities Mortality Reporting System were due to P&I. This percentage was below the epidemic threshold of 6.9% for week 24.

Pneumonia and Influenza Mortality for 122 U.S. Cities Week Ending 06/18/2011



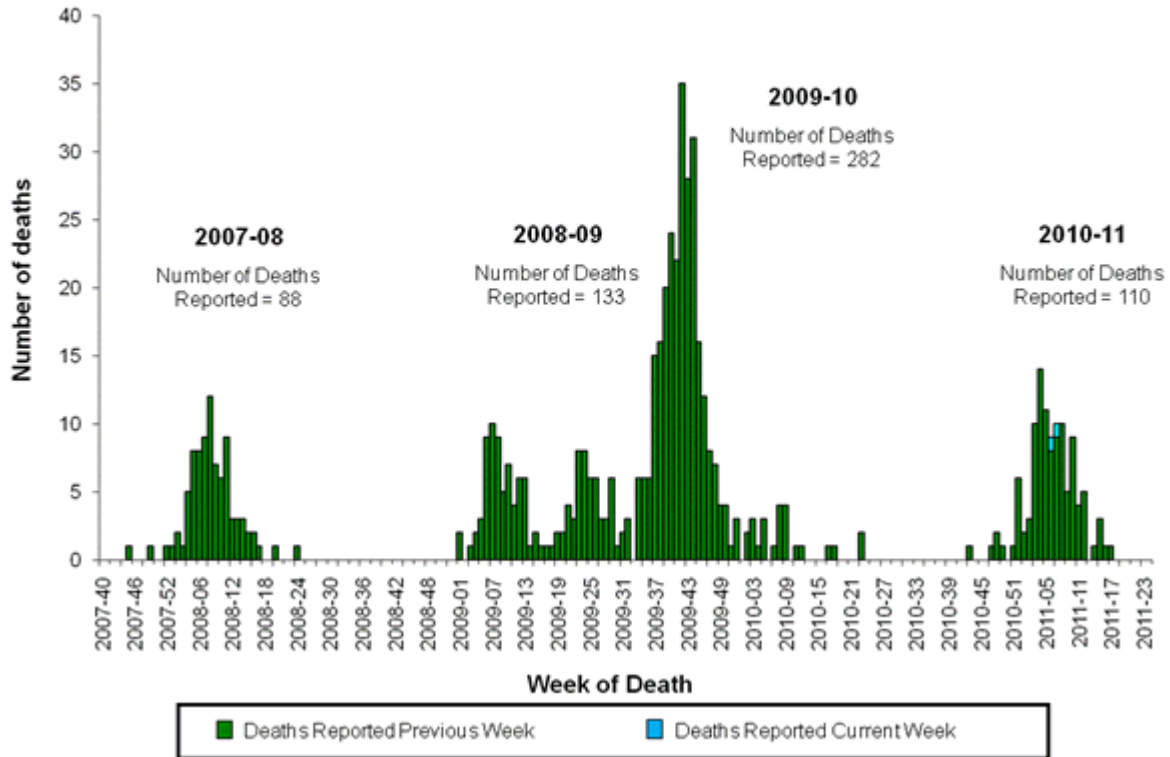
[View Full Screen](#) | [View PowerPoint Presentation](#)

[Influenza-Associated Pediatric Mortality](#)

Two influenza-associated pediatric deaths were reported to CDC during week 24. One death was associated with an influenza A (H3) virus and one was associated with an influenza B virus.

This season, 110 laboratory-confirmed influenza-associated pediatric deaths from 33 states, Chicago, and New York City have been reported. Forty-two of the 110 deaths reported were associated with influenza B viruses; 29 were associated with 2009 influenza A (H1N1) viruses; 19 deaths reported were associated with influenza A (H3N2) viruses, and 20 were associated with an influenza A virus for which the subtype was not determined.

Number of Influenza-Associated Pediatric Deaths by Week of Death: 2007-08 season to present

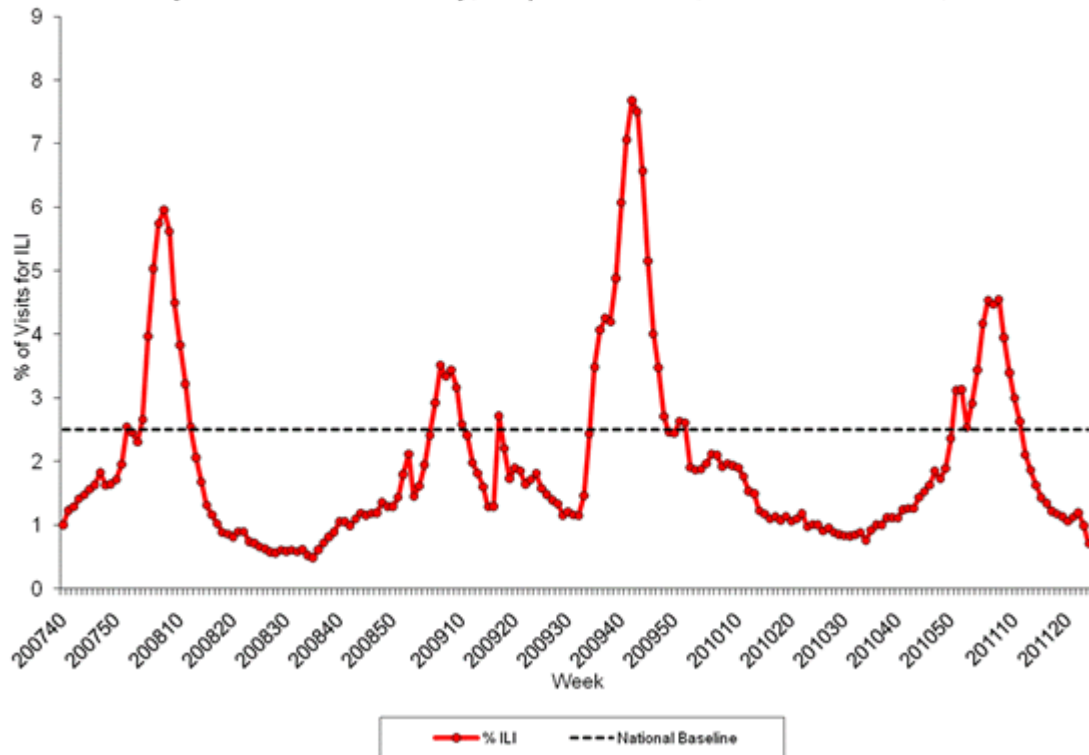


[View Full Screen](#) | [View PowerPoint Presentation](#)

Outpatient Illness Surveillance:

Nationwide during week 24, 0.7% of patient visits reported through the U.S. Outpatient Influenza-like Illness Surveillance Network (ILINet) were due to influenza-like illness (ILI). This percentage is below the national baseline of 2.5%.

Percentage of Visits for Influenza-like Illness (ILI) Reported by the U.S. Outpatient Influenza-like Illness Surveillance Network (ILINet), Weekly National Summary, September 30, 2007 – June 18, 2011



[View Chart Data](#) | [View Full Screen](#) | [View PowerPoint Presentation](#)

A description of surveillance methods is available at: <http://www.cdc.gov/flu/weekly/overview.htm>

File Formats Help:

- 
- 
- 
- 
- 
- 
- 
- 

[How do I view different file formats \(PDF, DOC, PPT, MPEG\) on this site? »](#)

- [Email](#)
- [Print](#)
- [Share](#)
- [Updates](#)

- [Subscribe](#)
- [Listen](#)

Error processing SSI file

- Page last reviewed: June 24, 2011
- Page last reviewed: June 24, 2011
- Content source: [Centers for Disease Control and Prevention](#)

- [Home](#)
- [A-Z Index](#)
- [Policies](#)
- [Using this Site](#)
- [Link to Us](#)
- [Contact CDC](#)



Centers for Disease Control and Prevention 1600 Clifton Road Atlanta, GA 30329-4027, USA
800-CDC-INFO (800-232-4636) TTY: (888) 232-6348 - [Contact CDC-INFO](#)

A-Z Index

1. [A](#)
2. [B](#)
3. [C](#)
4. [D](#)
5. [E](#)
6. [F](#)
7. [G](#)
8. [H](#)
9. [I](#)
10. [J](#)
11. [K](#)
12. [L](#)
13. [M](#)
14. [N](#)
15. [O](#)
16. [P](#)
17. [Q](#)
18. [R](#)
19. [S](#)
20. [T](#)
21. [U](#)
22. [V](#)
23. [W](#)
24. [X](#)
25. [Y](#)
26. [Z](#)
27. <#>