

Error processing SSI file

[Skip directly to search](#) [Skip directly to A to Z list](#) [Skip directly to site content](#)

[CDC Home](#)



Centers for Disease Control and Prevention

CDC 24/7: Saving Lives. Protecting People.™

[CDC 24/7: Saving Lives. Protecting](#)

[People.™](#)

Search The CDC



Search

[Seasonal Influenza \(Flu\)](#)

Error processing SSI file

Error processing SSI file

Error processing SSI file

- -
- -
- -
- -

Error processing SSI file



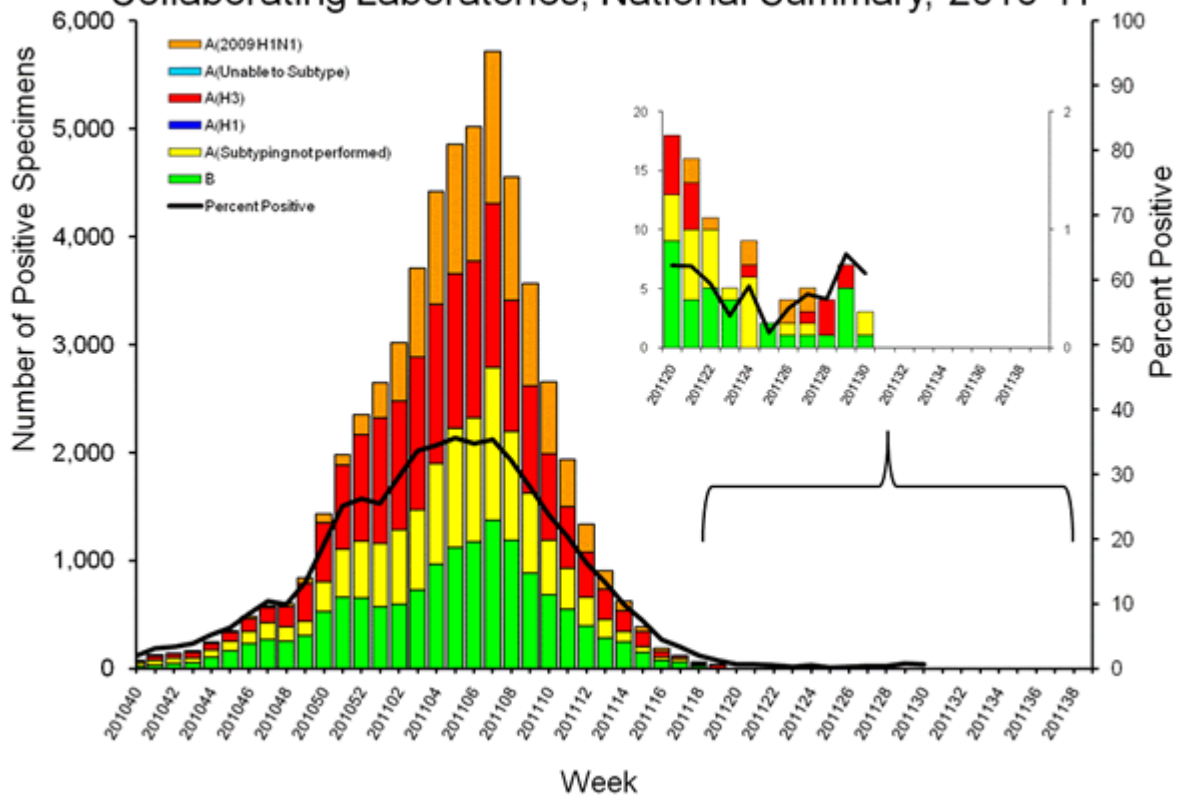
2010-2011 Influenza Season Week 30 ending July 30, 2011

All data are preliminary and may change as more reports are received.

[U.S. Virologic Surveillance:](#)

WHO and NREVSS collaborating laboratories located in all 50 states and Washington, D.C. report to CDC the number of respiratory specimens tested for influenza and the number positive by influenza type and subtype.

Influenza Positive Tests Reported to CDC by U.S. WHO/NREVSS Collaborating Laboratories, National Summary, 2010-11



[View Chart Data](#) | [View Full Screen](#) | [View PowerPoint Presentation](#)

[Pneumonia and Influenza \(P&I\) Mortality Surveillance](#)

During week 30, 6.4% of all deaths reported through the 122-Cities Mortality Reporting System were due to P&I. This percentage was below the epidemic threshold of 6.5% for week 30

for 122 U.S. Cities

Week Ending 07/30/2011

% of All Deaths Due to P&I

Epidemic Threshold

Seasonal Baseline

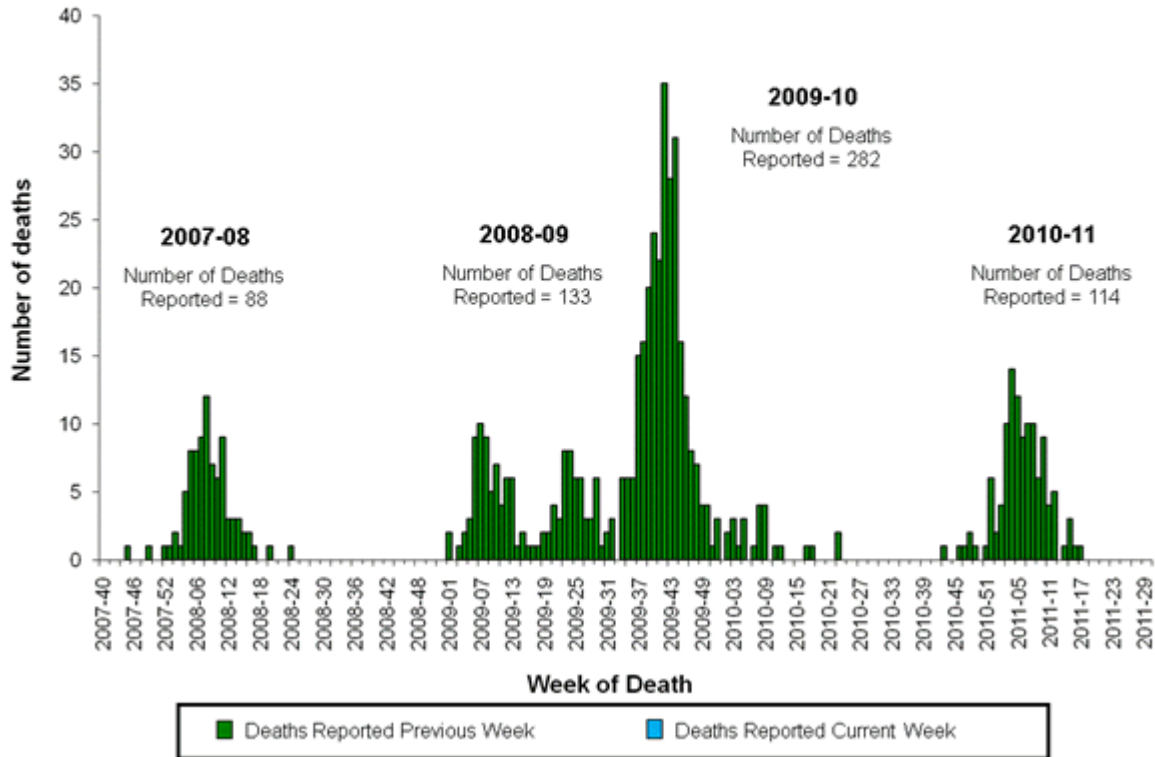
2006 2007 2008 2009 2010 2011

Weeks

Influenza-Associated Pediatric Mortality.

No influenza-associated pediatric deaths were reported to CDC during week 30. This season, 114 laboratory-confirmed influenza-associated pediatric deaths from 33 states, Chicago, and New York City have been reported. Forty-three of the 114 deaths reported were associated with influenza B viruses; 30 were associated with 2009 influenza A (H1N1) viruses; 21 deaths reported were associated with influenza A (H3N2) viruses, and 20 were associated with an influenza A virus for which the subtype was not determined.


Number of Influenza-Associated Pediatric Deaths by Week of Death: 2007-08 season to present



[View Full Screen](#) | [View PowerPoint Presentation](#)

Outpatient Illness Surveillance:

Nationwide during week 30, 0.6% of patient visits reported through the U.S. Outpatient Influenza-like Illness Surveillance Network (ILINet) were due to influenza-like illness (ILI). This percentage is below the national baseline of 2.5%.

 national levels of ILI and ARI

[View Chart Data](#) | [View Full Screen](#) | [View PowerPoint Presentation](#)

A description of surveillance methods is available at: <http://www.cdc.gov/flu/weekly/overview.htm>

File Formats Help:

- 
- 
- 
- 

-  [Flash](#)
-  [Zip Archive file](#)
-  [Apple Quicktime file](#)

[How do I view different file formats \(PDF, DOC, PPT, MPEG\) on this site? »](#)

- [Email](#)
- [Print](#)
- [Share](#)
- [Updates](#)
- [Subscribe](#)
- [Listen](#)

Error processing SSI file

- Page last reviewed: August 5, 2011
- Page last reviewed: August 5, 2011
- Content source: [Centers for Disease Control and Prevention](#)

- [Home](#)
- [A-Z Index](#)
- [Policies](#)
- [Using this Site](#)
- [Link to Us](#)
- [Contact CDC](#)



 [USA.gov: The U.S. Government's Official Web Portal](#)

Centers for Disease Control and Prevention 1600 Clifton Road Atlanta, GA 30329-4027, USA
 800-CDC-INFO (800-232-4636) TTY: (888) 232-6348 - [Contact CDC-INFO](#)

A-Z Index

1. [A](#)
2. [B](#)
3. [C](#)
4. [D](#)
5. [E](#)
6. [F](#)
7. [G](#)
8. [H](#)
9. [I](#)
10. [J](#)
11. [K](#)
12. [L](#)
13. [M](#)
14. [N](#)
15. [O](#)
16. [P](#)
17. [Q](#)
18. [R](#)
19. [S](#)
20. [T](#)

21. [U](#)
22. [V](#)
23. [W](#)
24. [X](#)
25. [Y](#)
26. [Z](#)
27. <#>