



2018-2019 Influenza Season Week 32 ending August 10, 2019

All data are preliminary and may change as more reports are received.

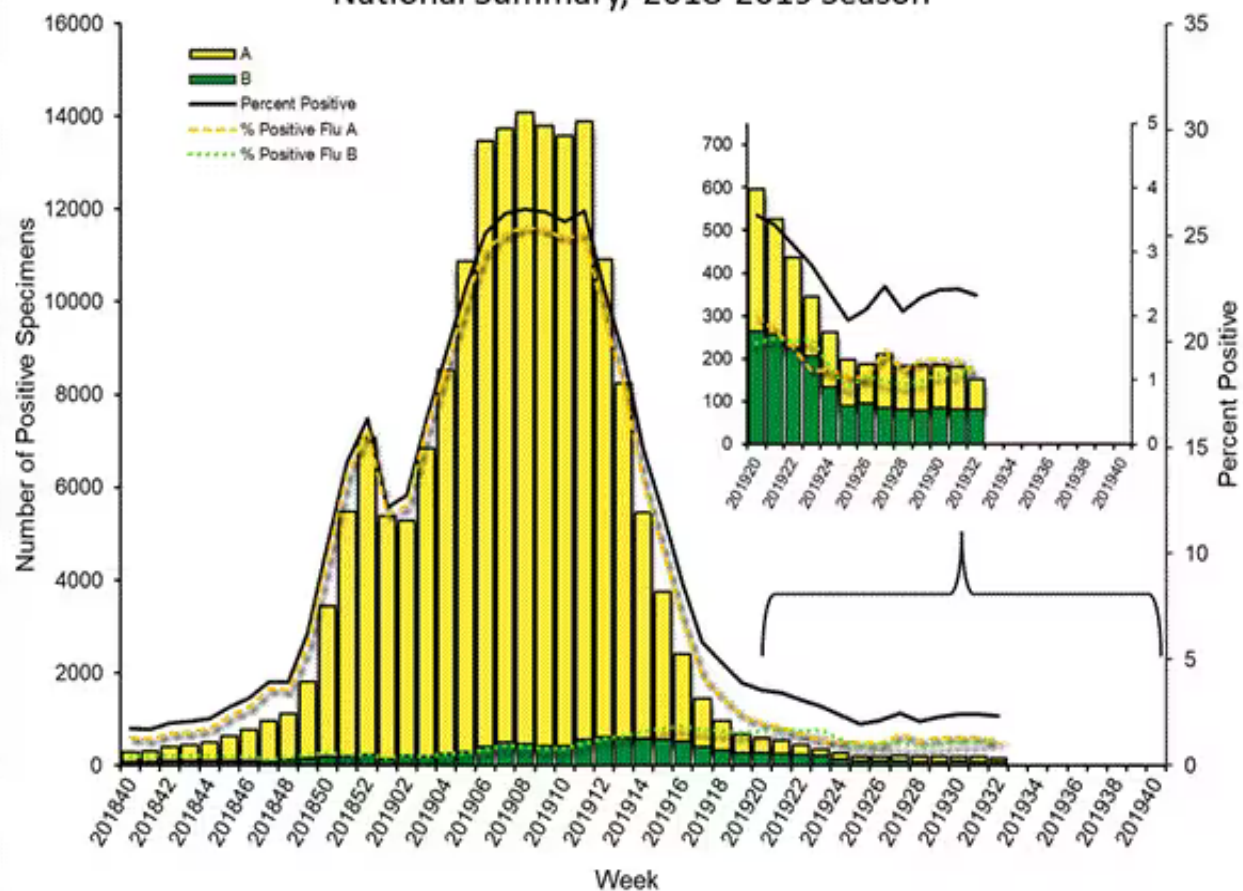
An overview of the CDC influenza surveillance system, including methodology and detailed descriptions of each data component, is available at <http://www.cdc.gov/flu/weekly/overview.htm>.

U.S. Virologic Surveillance:

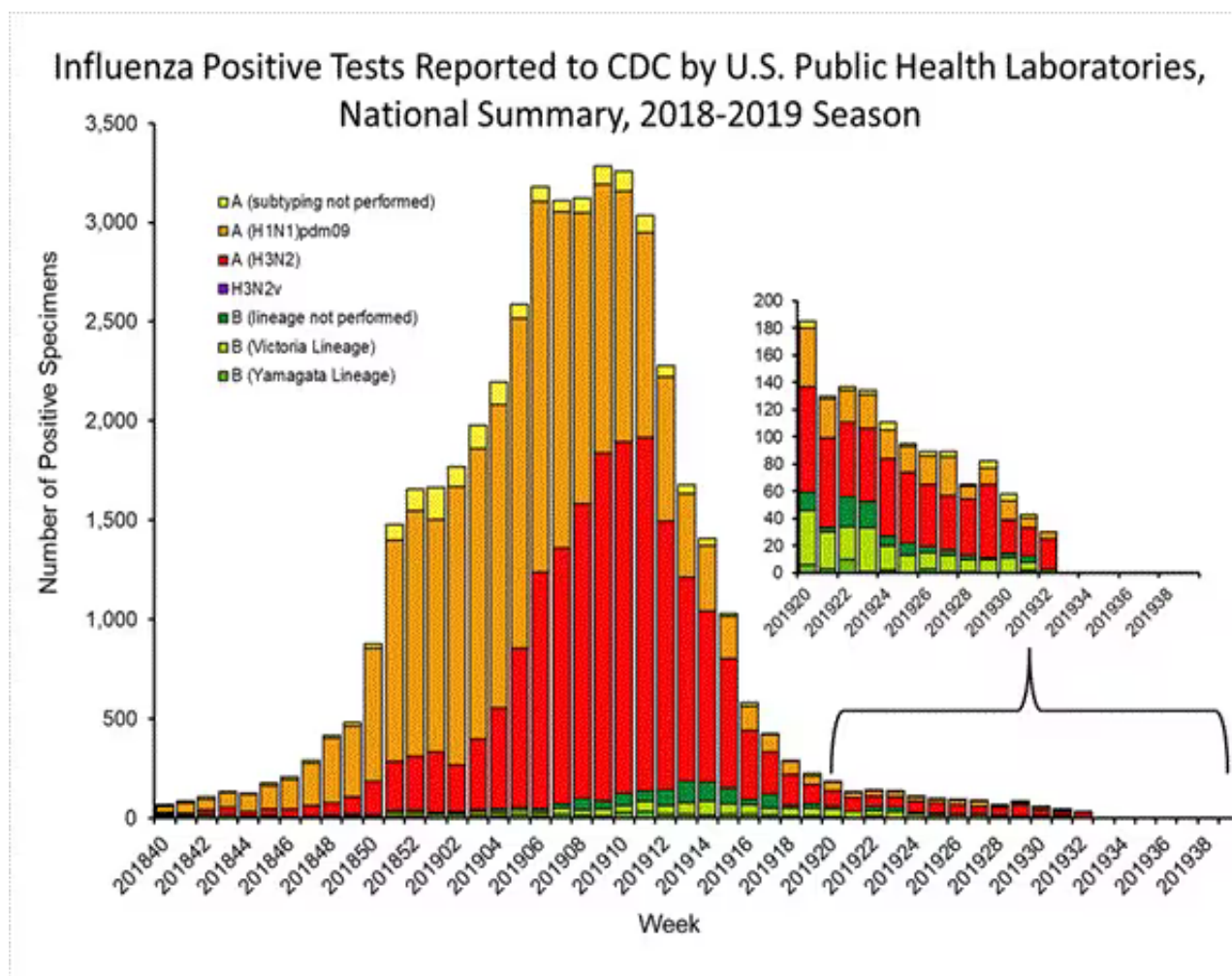
WHO and NREVSS collaborating laboratories, which include both public health and clinical laboratories located in all 50 states, Puerto Rico, Guam, and the District of Columbia, report to CDC the total number of respiratory specimens tested for influenza and the number positive for influenza by virus type. In addition, public health laboratories also report the influenza A subtype (H1 or H3) and influenza B lineage information of the viruses they test and the age or age group of the persons from whom the specimens were collected.

Additional virologic data, including national, regional and select state-level data, can be found at: <http://gis.cdc.gov/grasp/fluview/fluportaldashboard.html>. Age group proportions and totals by influenza subtype reported by public health laboratories can be found at: http://gis.cdc.gov/grasp/fluview/flu_by_age_virus.html.

Influenza Positive Tests Reported to CDC by U.S. Clinical Laboratories, National Summary, 2018-2019 Season



[View National and Regional Level Graphs and Data](#) | [View Chart Data](#) | [View Full Screen](#) | [View PowerPoint Presentation](#)



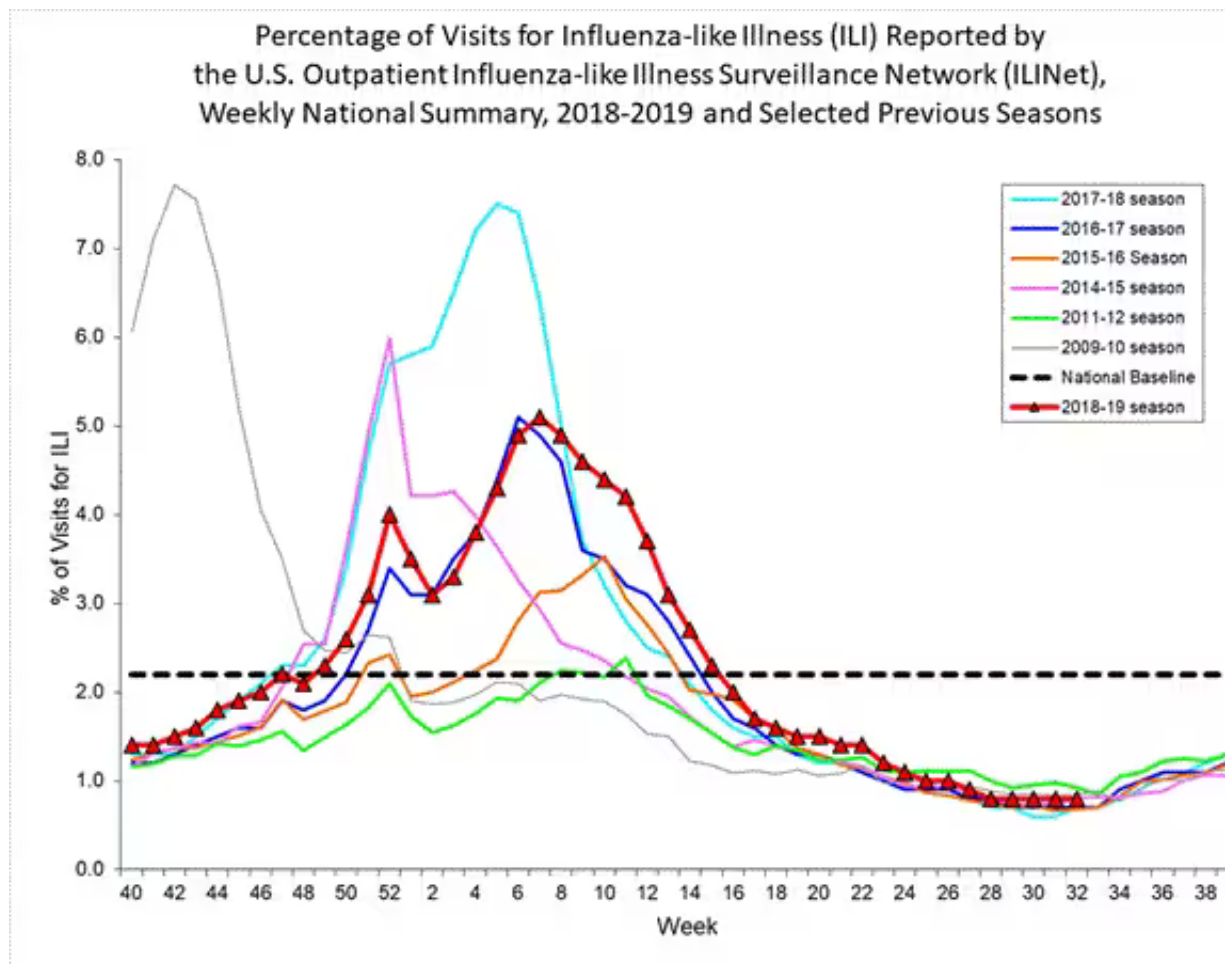
[View National and Regional Level Graphs and Data](#) | [View Chart Data](#) | [View Full Screen](#) | [View PowerPoint Presentation](#)

Outpatient Illness Surveillance:

Nationwide during week 32, 0.8% of patient visits reported through the U.S. Outpatient Influenza-like Illness Surveillance Network (ILINet) were due to influenza-like illness (ILI). This percentage is below the national baseline of 2.2%. (*ILI is defined as fever (temperature of 100°F [37.8°C] or greater) and cough and/or sore throat.*)

Additional data on medically attended visits for ILI for current and past seasons and by geography (national, HHS region, or select states) are available on FluView Interactive

<http://gis.cdc.gov/grasp/fluview/fluportaldashboard.html>.



[View National and Regional Level Graphs and Data](#) | [View Chart Data](#) | [View Full Screen](#) | [View PowerPoint Presentation](#)

Influenza-Associated Hospitalizations:

The Influenza Hospitalization Surveillance Network (FluSurv-NET) conducts all age population-based surveillance for laboratory-confirmed influenza-related hospitalizations in select counties in the Emerging Infections Program (EIP) states and Influenza Hospitalization Surveillance Project (IHSP) states.

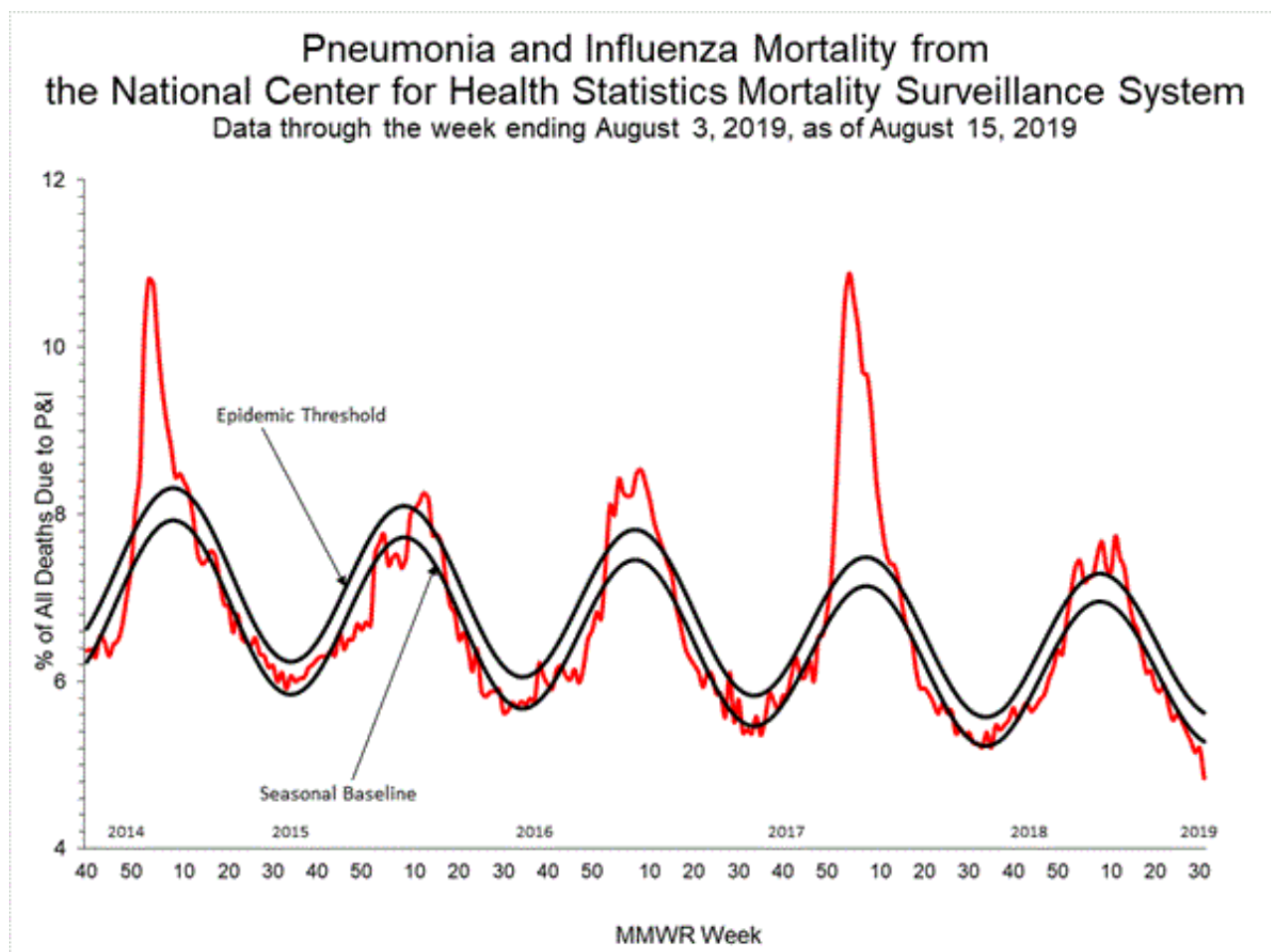
Additional FluSurv-NET data can be found at: <http://gis.cdc.gov/GRASP/Fluview/FluHospRates.html> and <http://gis.cdc.gov/grasp/fluview/FluHospChars.html>.

Pneumonia and Influenza (P&I) Mortality Surveillance:

Based on National Center for Health Statistics (NCHS) mortality surveillance data available on August 15,

2019, 4.8% of the deaths occurring during the week ending August 3, 2019 (week 31) were due to P&I. This percentage is below the epidemic threshold of 5.6% for week 31.

Additional pneumonia and influenza mortality data for current and past seasons and by geography (national, HHS region, or state) are available on FluView Interactive (<http://gis.cdc.gov/grasp/fluview/mortality.html>). Data displayed on the regional and state-level are aggregated by the state of residence of the decedent.



[View Regional and State Level Data](#) | [View Chart Data](#) | [View Full Screen](#) | [View PowerPoint Presentation](#)

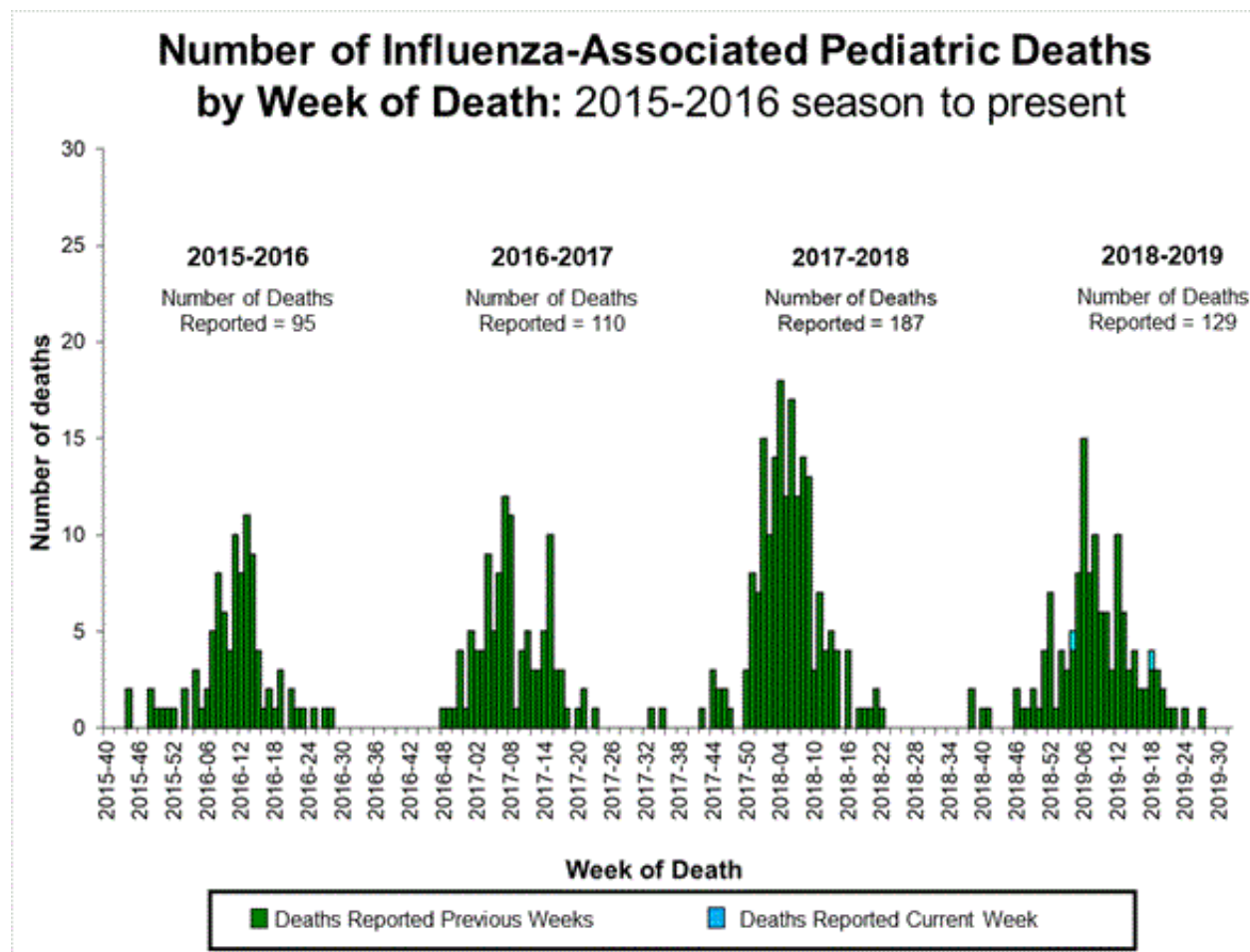
Influenza-Associated Pediatric Mortality:

Two influenza-associated pediatric deaths were reported to CDC during week 32. One death was associated with an influenza A (H3) virus and occurred during week 4 (the week ending January 26, 2019) and one death was associated with an influenza A (H1N1)pdm09 virus and occurred during week 18 (the week ending May 4, 2019).

A total of 129 influenza-associated pediatric deaths occurring during the 2018-2019 season have been reported to CDC.

Additional information on influenza-associated pediatric deaths including basic demographics, underlying

conditions, bacterial co-infections, and place of death for the current and past seasons, is available on FluView Interactive (<http://gis.cdc.gov/GRASP/Fluview/PedFluDeath.html>).



[View Interactive Application](#) | [View Full Screen](#) | [View PowerPoint Presentation](#)

Additional National and International Influenza Surveillance Information

FluView Interactive: FluView includes enhanced web-based interactive applications that can provide dynamic visuals of the influenza data collected and analyzed by CDC. These FluView Interactive applications allow people to create customized, visual interpretations of influenza data, as well as make comparisons across flu seasons, regions, age groups and a variety of other demographics. To access these tools, visit <http://www.cdc.gov/flu/weekly/fluviewinteractive.htm>.

U.S. State and local influenza surveillance: Click on a jurisdiction below to access the latest local influenza information.

Alabama	Alaska	Arizona	Arkansas	California
Colorado	Connecticut	Delaware	District of Columbia	Florida
Georgia	Hawaii	Idaho	Illinois	Indiana
Iowa	Kansas	Kentucky	Louisiana	Maine
Maryland	Massachusetts	Michigan	Minnesota	Mississippi
Missouri	Montana	Nebraska	Nevada	New Hampshire
New Jersey	New Mexico	New York	North Carolina	North Dakota
Ohio	Oklahoma	Oregon	Pennsylvania	Rhode Island
South Carolina	South Dakota	Tennessee	Texas	Utah
Vermont	Virginia	Washington	West Virginia	Wisconsin
Wyoming	New York City	Puerto Rico	Virgin Islands	

World Health Organization: Additional influenza surveillance information from participating WHO member nations is available through [FluNet](#) and the [Global Epidemiology Reports](#).

WHO Collaborating Centers for Influenza located in [Australia](#), [China](#), [Japan](#), the [United Kingdom](#), and the [United States](#) (CDC in Atlanta, Georgia).

Europe: For the most recent influenza surveillance information from Europe, please see WHO/Europe and the European Centre for Disease Prevention and Control at <http://www.flunewseurope.org/>.

Public Health Agency of Canada: The most up-to-date influenza information from Canada is available at <http://www.phac-aspc.gc.ca/fluwatch/>

Public Health England: The most up-to-date influenza information from the United Kingdom is available at <https://www.gov.uk/government/statistics/weekly-national-flu-reports>

Any links provided to non-Federal organizations are provided solely as a service to our users. These links do not constitute an endorsement of these organizations or their programs by CDC or the Federal Government, and none should be inferred. CDC is not responsible for the content of the individual organization web pages found at these links.

An overview of the CDC influenza surveillance system, including methodology and detailed descriptions of each data component, is available at: <http://www.cdc.gov/flu/weekly/overview.htm>.