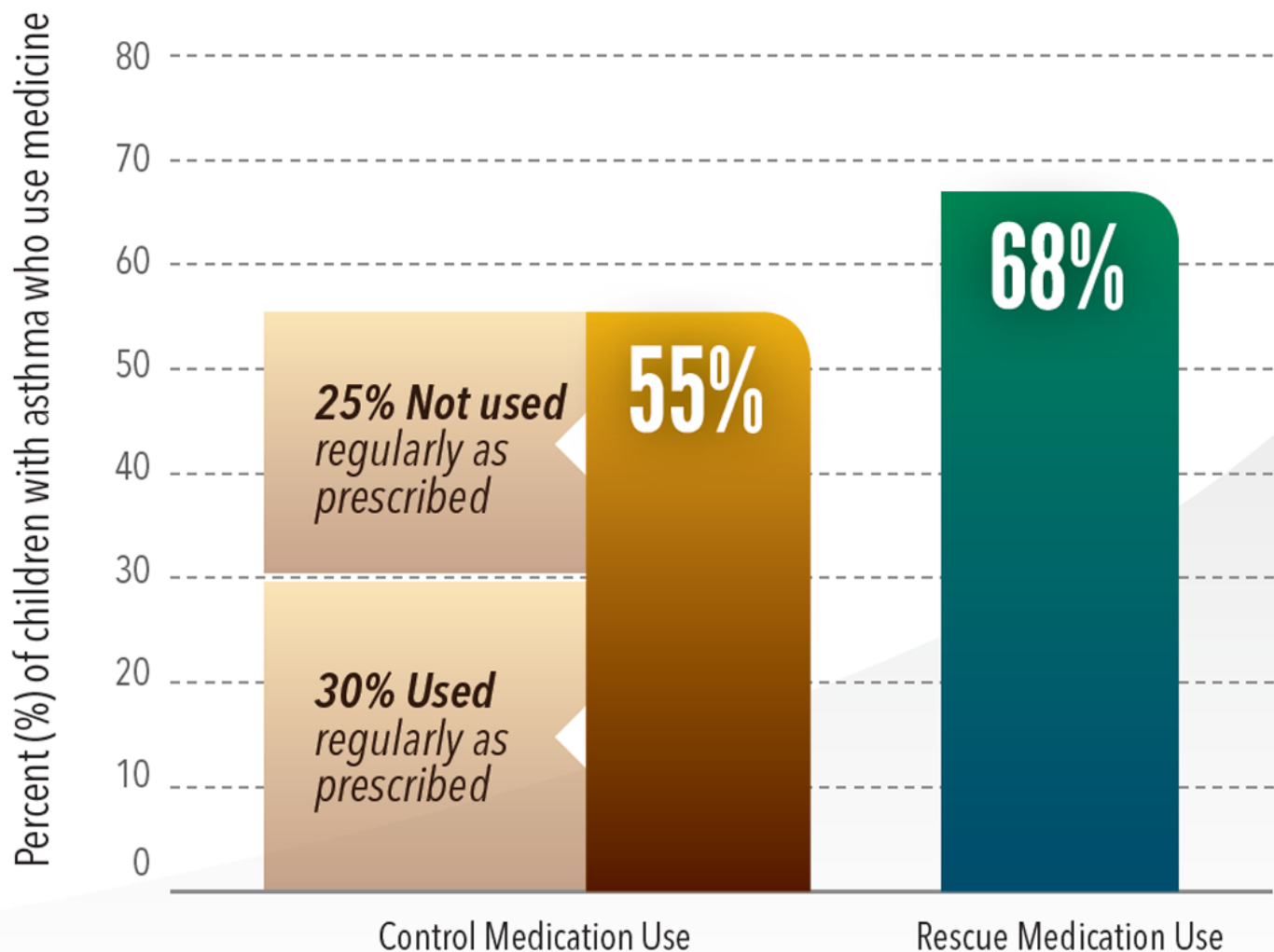


Asthma in children

Working together to get it under control

Asthma medication use among children with asthma in 2013.



Asthma medication use among children with asthma in 2013.

Percent (%) of children with asthma who use medicine

More than half (55%) of children with asthma used control medication.

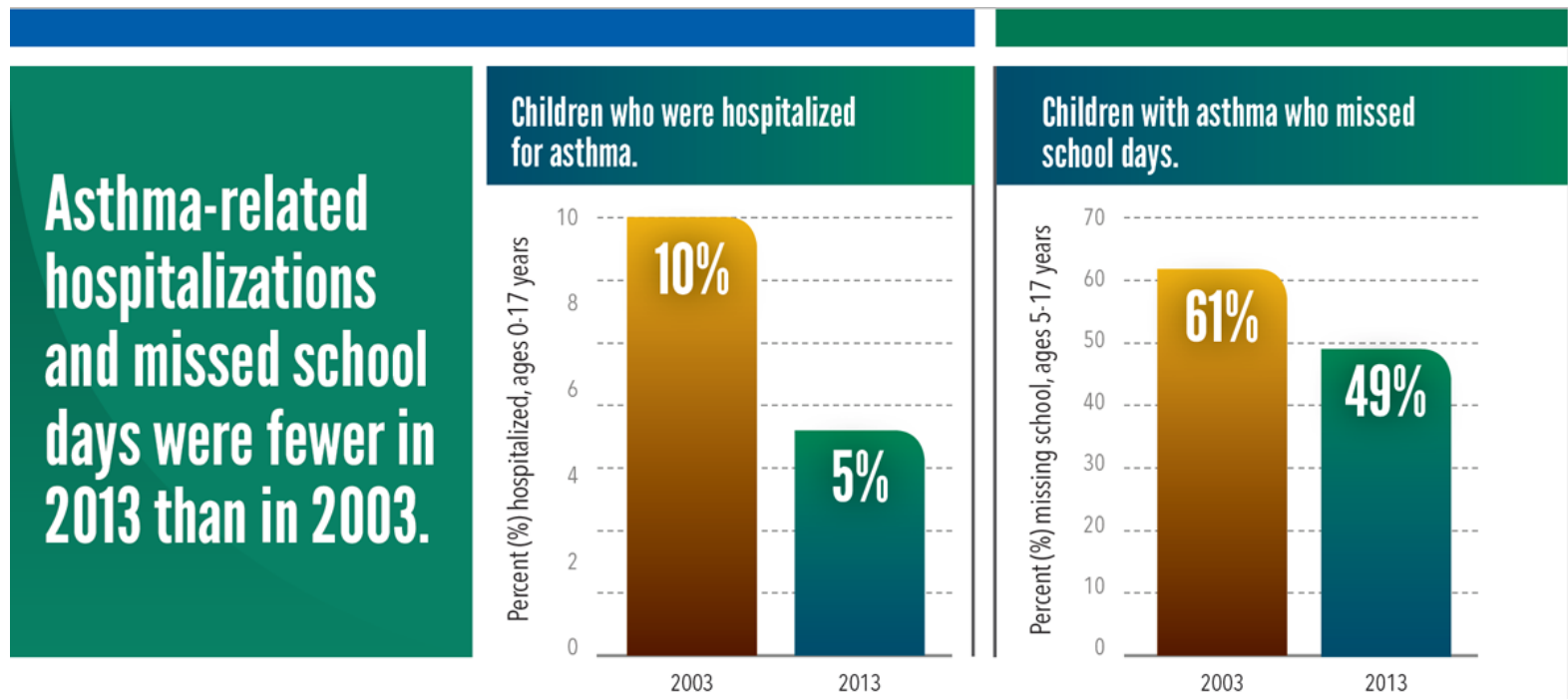
Twenty-five percent (25%) of children with asthma **did not** use control medication regularly as prescribed.

Thirty percent (30%) of children with asthma **used** control medication regularly as prescribed.

Sixty-eight percent (68%) of children with asthma used rescue medication.

SOURCE: National Health Interview Survey, 2013. <http://bit.ly/2xkU0GA>

(<https://web.archive.org/web/20180628120932/http://bit.ly/2xkU0GA>).



Asthma-related hospitalizations and missed school days were fewer in 2013 than in 2003.

Children who were hospitalized for asthma

Percent (%) hospitalized, ages 0-17 years

In 2003, 10% of children with asthma were hospitalized.

In 2013, 5% of children with asthma were hospitalized.

Children with asthma who missed school days

Percent (%) missing school, ages 5-17 years

In 2003, 61% of children with asthma missed school days.

In 2013, 49% of children with asthma missed school days.

SOURCE: National Health Interview Survey, 2003 and 2013. <http://bit.ly/2xkU0GA>

(<https://web.archive.org/web/20180628120932/http://bit.ly/2xkU0GA>).

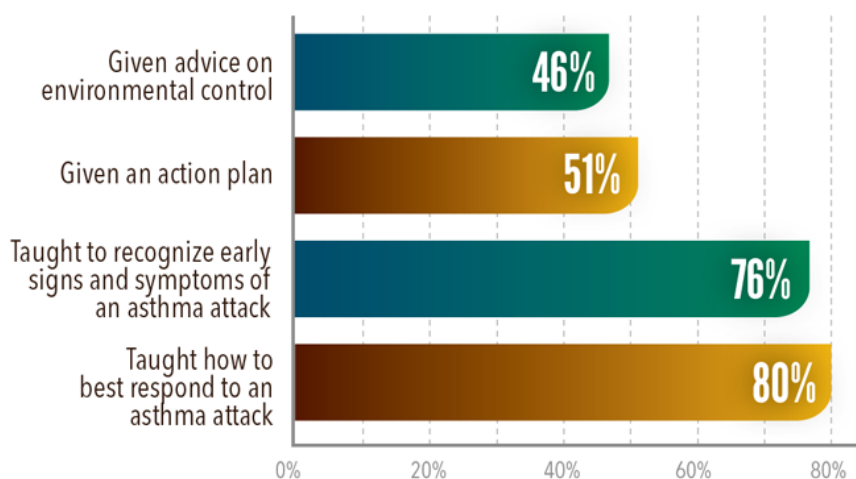


Average annual medical costs of asthma were nearly \$1,000 per child in 2012.

Average annual medical costs of asthma were nearly \$1,000 per child in 2012.

SOURCE: <http://bit.ly/2rtljBe> (<https://web.archive.org/web/20180628120932/http://bit.ly/2rtljBe>).

Healthcare provider asthma education of children in 2013.



SOURCE: National Health Interview Survey, 2013. <http://bit.ly/2xkU0GA>

Healthcare provider asthma education of children in 2013.

In 2013, healthcare providers reported providing the following asthma education to children with asthma:

Given advice on environmental control – 46%

Given an action plan – 51%

Taught to recognize early signs and symptoms of an asthma attack – 76%

Taught how to best respond to an asthma attack – 80%

SOURCE: National Health Interview Survey, 2013. <http://bit.ly/2xkU0GA>
(<https://web.archive.org/web/20180628120932/http://bit.ly/2xkU0GA>).

Page last updated: February 6, 2018

Content source: National Center for Environmental Health

(<https://web.archive.org/web/20180628120932/https://www.cdc.gov/nceh/default.htm>)

Page maintained by: Office of the Associate Director for Communications (OADC)