



Mpox

[Mpox Home](#)

2022-2023 Outbreak Cases and Data Data as of January 11 2024 at 2:00 pm EDT

EDT

As of January 10, 2024, this data will no longer be updated. For updated case data please check [Weekly Statistics](#) from the [National Notifiable Diseases Surveillance System \(NNDSS\)](#).

U.S. Cases

Total Cases
31,689

U.S. Deaths

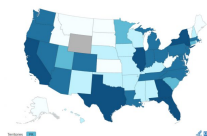
Total Cases
56

Global Cases

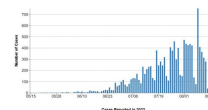
Total Cases
93,497

Disclaimer: The weekly average can contain historical data and may not reflect the exact number of new cases and deaths for the week.

U.S. Map & Case Count



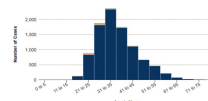
U.S. Case Trends



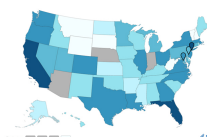
Global Map & Case Count



Cases by Demographics



Vaccine Administration & Effectiveness



Laboratory Testing



Archived Mpox Data

- [TPOXX Patient Data](#) >
- [Lab Testing Data by HHS Region](#) >
- [Lab Testing by Demographics](#) >
- [Outbreak Reproduction Estimates](#) >
- [Mpox Technical Reports](#) >
- [CDC Archive](#) >