

PREVENTING CHRONIC DISEASE

PUBLIC HEALTH RESEARCH, PRACTICE, AND POLICY



2022 Year in Review



U.S. Department of
Health and Human Services
Centers for Disease
Control and Prevention

A WORD FROM THE EDITOR IN CHIEF

Preventing Chronic Disease (PCD) had its most successful year to date in 2022. The journal's impact factor increased from 2.803 in 2020 to 4.354 in 2021, beating last year's record for the biggest increase in PCD's history. PCD's overall rankings have improved in every category. PCD's 5-year impact factor increased from 3.215 to 4.041. The journal ranked 4th out of 30 US open-access journals and ranked 76th out of 585 journals worldwide in the Public Health, Environmental, and Occupational Health open-access journal category by Scimago. One of PCD's major accomplishments this past year was reaching the top 10% of more than 27,000 journals indexed by Scimago. PCD credits these successes to support from CDC's National Center for Chronic Disease Prevention and Health Promotion leadership, along with the journal's growing team of Associate Editors and its Editorial Board and Statistics Review Committee members, who are all committed to ensuring that PCD maintains a high bar in terms of the quality and integrity of its scientific content.

PCD continued to publish rigorous peer-reviewed articles on a variety of critical topics in public health: COVID-19 and chronic diseases; mental health; public health surveillance; use of GIS for public health planning; advancing health equity science research; and public health approaches to addressing cardiovascular health. PCD's acceptance rate remained consistent, from 21.5% in 2021 to 22% in 2022, a reflection of PCD's continued emphasis on manuscripts of the highest quality and scientific rigor. PCD was also consistent in maintaining its primary focus on providing insights on the development, implementation, and evaluation of population-based interventions to prevent chronic diseases and control disease effects on quality of life, morbidity, and mortality.

In 2022, PCD published 4 collections addressing long-standing and emerging public health challenges. In June, PCD published a collection entitled "Geospatial Perspectives on the Intersection of Chronic Disease and COVID-19." This collection brought together scientists and practitioners from the breadth of public health and the social sciences in 11 peer-reviewed articles. These articles provided examples on how geospatial perspectives can contribute to understanding and addressing the intersection of chronic disease and COVID-19, a respiratory disease caused by the SARS-CoV-2 virus. In April, PCD published "Cancer Screening Prevalence and Associated Factors Among US Adults," a collection that featured 11 peer-reviewed articles presenting research on cancer screening trends, determinants of cancer screening, and public health practices that increase cancer screening uptake in specific populations. The collection also included a podcast interview with the authors. In November, the journal published the "2022 Student Paper Contest Collection," a collection of 8 peer-reviewed papers generated by students and their mentors that offers insights into the ways students are developing skills at conceptualizing research, collecting, analyzing, and reporting data, and discussing the public health implications of research findings. In December, PCD published "Global Responses to Prevent, Manage, and Control Cardiovascular Disease," a collection of 21 peer-reviewed articles that advances our understanding of three broad areas of cardiovascular disease (CVD): factors contributing to increases in CVD, factors contributing to disparities in CVD, and collaborative programmatic efforts to decrease CVD risk. This collection offers insight into both the successes and challenges of public health strategies to improve cardiovascular health through prevention, detection, and treatment.

PCD's tremendous success in 2022 would not have been possible without the contributions of its rich pool of qualified peer reviewers. PCD peer reviewers provide their expertise to the journal on a voluntary basis. Several hundred peer reviewers offered their time and service to the journal in 2022, contributing their expertise to make the most informed decisions on papers submitted to the journal. We can't thank our peer reviewers enough for their contribution to PCD's successes this past year. We would also like to thank the journal's Editorial Board, Associate Editors, Statistics Review Committee members, PCD staff, subscribers, and senior leadership in the National Center for Chronic Disease Prevention and Health Promotion for their unwavering support of the journal. As a result of the journal's tremendous support, PCD is well positioned to continue its mission to provide the public health community with peer-reviewed research, evaluation, and practice content.

Leonard Jack, Jr, PhD, MSc



METRICS

PDF
Downloads:
27,049

Manuscripts
Published: **87**

**5-Year
Impact
Factor**
4.041 (2021)

Collections
Published: **4**

**Current
Impact
Factor**
4.354 (2021)

Manuscripts
Received: **423**

**Total
Web
Views**
2,117,396

**Total
Subscribers**
44,762

International Scope
106 manuscripts submitted
from 33 countries

CME
Continuing Medical
Education Offered: **8**



SCOPE AND FOCUS

PCD's versatile electronic publication platform and relevant, rigorous research continue to set it apart from other journals in the public health arena. With each weekly release of articles, PCD continues its mission to promote dialogue among researchers, practitioners, and policy makers worldwide on the integration and application of research findings and practical experience to improve population health. PCD has released 5 Calls for Papers in 2022. The following major topic areas are of great interest to the journal:

1. Sleep Deprivation, Sleep Disorders, and Chronic Disease

Preventing Chronic Disease (PCD) welcomes submissions for its upcoming collection, "Sleep Deprivation, Sleep Disorders, and Chronic Disease." Sleep is an essential daily behavior that supports physical, emotional, and psychological well-being. Nearly every system of the body depends on satisfactory sleep quality and quantity for routine healing, repair, and restoration. Factors that negatively affect health include sleep deprivation, poor sleep routines, and negative life events, as well as sleep disorders (eg, restless legs syndrome, insomnia). In addition, particularly short sleep duration may be associated with chronic diseases. Research shows that insufficient sleep is linked to an increased risk for the development of type 2 diabetes, and sleep duration and sleep quality have emerged as predictors of hemoglobin A1c level, a key marker of blood sugar control. Hypertension, stroke, coronary heart disease, and irregular heartbeat are more common among those with disordered sleep than those without sleep abnormalities. The link between psychological health and sleep has received attention as well; depressive symptoms can decrease when sleep apnea is effectively treated and sufficient sleep is restored. In addition, emerging studies are showing how the COVID-19 pandemic has led to significant changes in daily routines, mental health, and an increase among the general population in the prevalence of sleep disturbances during periods of quarantine.

PCD is interested in publishing papers from around the world that bring increased attention to the relationship between sleep and chronic disease and offer insight into successes and challenges of public health strategies to improve the quality of sleep. For this collection, PCD encourages the submission of manuscripts covering diverse topics using various PCD article types. Please refer to the Types of Articles page on PCD's website for specifications of each article type. Examples of topics include but are not limited to the following:

- Prevalence of healthy and unhealthy sleep duration among children, adolescents, adults, and older adults
- Latest research on causes, symptoms, and treatment of sleep deprivation and sleep disorders
- Differences in the amount, frequency, time, efficiency, and quality of sleep among racial and ethnic groups
- Research on the link between insufficient sleep and an increased risk for the development of type 2 diabetes
- Effects of the COVID-19 pandemic on sleep quality among the general population
- Effects of the COVID-19 pandemic on sleep quality among racial and ethnic groups
- Effects of social determinants (eg, job stress, neighborhood characteristics, education) on sleep quality and overall health
- The influence of discrimination and racism to racial and ethnic disparities on sleep quality
- The influence of alcohol consumption on sleep, including strategies to intervene on chronic drinking to improve sleep quality
- Effects of TV, internet, and other screen time on quality of life among children, adolescents, and adults
- Research exploring ways to optimize sleep duration and quality to improve blood sugar control in those with type 2 diabetes
- The link between hypertension, stroke, and coronary heart disease and disordered sleep
- Innovative interventions to reduce TV, internet, and other screen time among children, adolescents, and adults
- The relationship between psychological health, sleep deprivation, and sleep disorders

- Psychologically informed behavior-change approaches that contribute to improved sleep quality and improved chronic disease management
- Practical “how-to” tips based on the latest research on ways to improve sleep quality
- Public health awareness campaigns that promote good sleep hygiene, including behaviors that ensure sufficient, high-quality sleep
- Multilevel approaches for addressing disparities in sleep health, such as individual-level behavioral recommendations and health promotion interventions at multiple contextual levels (eg, family, schools, workplaces, media, and policy) among those diagnosed with chronic disease
- Clinical and population-based approaches to promote sleep health among children, adolescents, adults, and older adults
- The do’s and don’ts of healthy napping among children, adolescents, adults, and older adults
- Clinical, translational, and population-based research in pediatric sleep medicine

Learn more about this [Call for Papers](#).

2. Advancing Chronic Disease Data Modernization Enhancements to Meet Current and Future Public Health Challenges

Preventing Chronic Disease (PCD) welcomes submissions for its upcoming collection, “Advancing Chronic Disease Data Modernization Enhancements to Meet Current and Future Public Health Challenges.” The nation’s health data systems are often antiquated, resulting in a myriad of negative effects on chronic disease prevention and health promotion efforts. In addition, antiquated data management systems often become difficult to support, maintain, scale, or integrate into new platforms. Enhancing the nation’s data systems will require making important changes to ensure skilled individuals are in place, new operational processes are adopted, and appropriate policies are established to facilitate monitoring and evaluation of data modernization action plans. This collection will feature peer-reviewed papers showcasing efforts under way by federal, state, tribal, local, and territorial public health agencies to collect, use, and share data. PCD is interested in publishing papers describing and highlighting data management infrastructure transformations that support response-ready systems capable of meeting current and future health challenges.

For this collection, PCD encourages the submission of manuscripts covering diverse topics using various PCD article types. Please refer to the Types of Articles page on PCD’s website for specifications of each article type. Examples of topics of interest include but are not limited to the following:

- Frameworks that guide data modernization changes and position data systems to improve reliability, serviceability, and trustworthiness
- Methodologies used to monitor, evaluate, and report effectiveness of data management systems
- Scientific documentation that tracks progress of continuous improvements and provides accountability
- Identification of key outputs and outcomes (ie, specific metrics) to track and monitor from inception that provide insights into what is working and/or what needs modification
- Strategies to maintain higher quality, more accessible, and more complete health data collection to ensure data is representative of all people
- Improving equity-centered data systems to collect data on social factors that impact health
- Identification of privacy-enhancing technologies that increase public confidence in data governance and reporting
- Protecting privacy-related policies governing the release of public health data

- Strategies to improve timeliness, completeness, and quality of critical data for public health responses
- The application of data modernization on public health efforts to improve chronic disease prevention and control

Learn more about this [Call for Papers](#).

3. Tools and Techniques to Effectively and Suitably Conduct Program Evaluation

Preventing Chronic Disease (PCD) welcomes submissions for its upcoming collection, “**Tools and Techniques to Effectively and Suitably Conduct Program Evaluation**.” Evaluation is one of the 10 essential public health functions and critical to effective public health practice, especially given its importance in monitoring and measuring the quality, pace, and direction of interventions and/or tracking the progress and impact of implementation. Stakeholders drive evaluations, unlike research, and should therefore be adapted to the contexts (ie, community, organization, or setting) being evaluated and to outcomes of interest. Evaluations should be flexible and adaptable and provide staff and stakeholders with reliable, high-quality information designed to address real-world issues.

For this collection, PCD encourages the submission of manuscripts covering diverse topics using PCD’s article type, **Tools for Public Health Practice**. Examples of topics of interest include but are not limited to the following:

- Identification of challenges in conducting performance monitoring and tips on how to overcome those challenges
- Adopting the appropriate theory of change to ensure alignment with data collection
- Identifying attributes, skills, and abilities in securing experts to assist with performance monitoring and program evaluation
- Frameworks and/or guides to assist program management with performance monitoring and program evaluation efforts
- Training and development of program staff to increase awareness of what is required to create tailored evaluation plans prior to program implementation
- How to conduct literature searches to develop plans for performance monitoring and program evaluation
- Tools to obtain outputs and outcomes of interest to key stakeholders
- Strategies to increase workforce capacity in performance monitoring and program evaluation
- Requirements necessary to design, implement, and value multisite evaluation
- Development of performance monitoring systems that capture and report data on how well aspects of public health programs are being implemented, including both barriers and enablers to implementation
- How to conduct multisite evaluations under various scenarios:
 - When using common interventions versus differing interventions
 - Generating and reporting findings with measures are standardized, while others are markedly different across sites (ie, some findings examine whether anything worked, while other findings compare the relative effectiveness of programs already shown to be successful)

Learn more about this [Call for Papers](#).

4. 2023 PCD Student Paper Contest

Preventing Chronic Disease (PCD) welcomes submissions from students at the high school, undergraduate, and graduate levels, recent postgraduates, and medical residents for PCD's annual Student Paper Contest. PCD is interested in publishing papers relevant to the prevention, screening, surveillance, and population-based intervention of chronic diseases, including but not limited to arthritis, asthma, cancer, depression, diabetes, obesity, CVD, and COVID-19 and chronic conditions. The journal is also interested in research examining the role that social determinants exact on health, including the less explored determinant of racism.

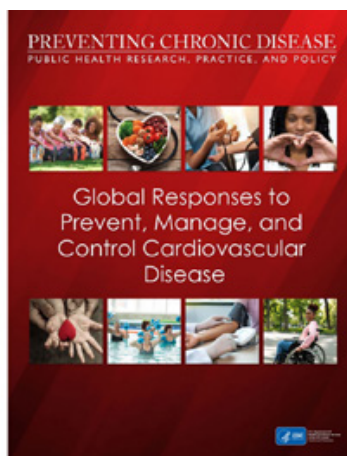
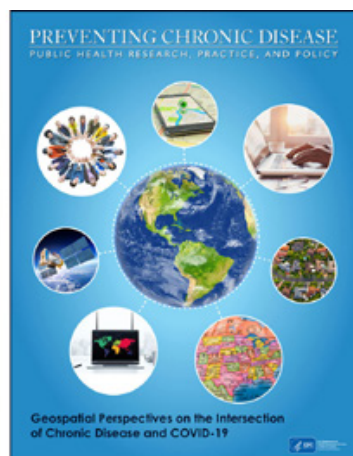
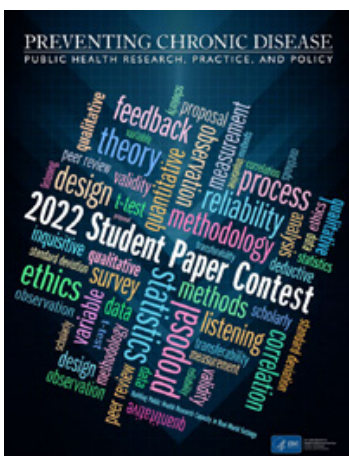
Learn more about this [Call for Papers](#).

5. Implementing and Sustaining Policy, Systems, and Environmental (PSE) Approaches to Support Healthy Behaviors in Diverse Settings

Preventing Chronic Disease (PCD) welcomes submissions for its upcoming collection, "**Implementing and Sustaining Policy, Systems, and Environmental (PSE) Approaches to Support Healthy Behaviors in Diverse Settings.**" Over the past decade, there has been increased understanding that health behaviors are not only shaped by individual choices but also influenced heavily by the environments in which they occur. The use of PSE approaches have emerged as a possible avenue to reach populations by implementing a combination of strategies that create supportive conditions for individuals to adopt and sustain healthier behaviors to prevent or manage chronic disease. PSE approaches seek to create settings, environments, and/or conditions that are readily available and easily accessible, thus helping individuals to make healthy choices in schools, communities, worksites, hospitals, restaurants, and beyond. approaches include developing policies at the legislative or organizational level that institutionalize new rules or procedures, such as laws, ordinances, mandates, or regulations. Systems approaches involve changes made to rules, processes, and infrastructure within a given setting. *Environmental* approaches seek to make changes to physical, social, and economic environments. Key to the use of PSE approaches is the identification and implementation of strategies across all 3 domains to achieve the greatest potential to collectively enhance conditions that improve population health.

For this collection, PCD encourages the submission of manuscripts covering diverse topics using various PCD article types. Please refer to the [Types of Articles](#) page on PCD's website for specifications of each article type. This collection of papers will focus primarily on the impact (evaluation) of PSE interventions with less focus on papers that are descriptive in nature. For example, papers that focus on implementation and scaling up of novel PSE approaches and their impact on chronic diseases and risk factors will be prioritized. Special consideration will also be given for papers that incorporate principles of health equity.

Learn more about this [Call for Papers](#).



10 Most Popular Articles of 2022

PCD is excited to announce its most popular articles published in 2022 as rated by Altmetric. Thousands of conversations about scholarly content happen online every day. Altmetric tracks a range of sources to capture, collate, and score this activity.

01. **Adults Who Have Never Been Screened for Colorectal Cancer, Behavioral Risk Factor Surveillance System, 2012 and 2020**
02. **Association of Burden and Prevalence of Arthritis With Disparities in Social Risk Factors, Findings From 17 US States**
03. **Challenges to Adolescent HPV Vaccination and Implementation of Evidence-Based Interventions to Promote Vaccine Uptake During the COVID-19 Pandemic: “HPV Is Probably Not at the Top of Our List”**
04. **Health Care Access and Use Among Adults With and Without Vision Impairment: Behavioral Risk Factor Surveillance System, 2018**
05. **Out of School Time Providers Innovate to Support School-Aged Children During the COVID-19 Pandemic**
06. **Rapid Evaluations of Telehealth Strategies to Address Hypertension: A Mixed-Methods Exploration at Two US Health Systems During the COVID-19 Pandemic**
07. **Changes Among Mexican Adults in Physical Activity and Screen Time During the COVID-19 Lockdown Period and Association With Symptoms of Depression, Anxiety, and Stress, May 29–July 31, 2020**
08. **Intentions and Attempts to Quit JUUL E-Cigarette Use: The Role of Perceived Harm and Addiction**
09. **Chronic Disease Management Service Opportunities for Community Pharmacists During the COVID-19 Pandemic**
10. **Prevalence of Chronic Diseases, Depression, and Stress Among US Childcare Professionals During the COVID-19 Pandemic**

About the Journal

PCD is a peer-reviewed public health journal sponsored by the Centers for Disease Control and Prevention and authored by experts worldwide. PCD was established in 2004 by the National Center for Chronic Disease Prevention and Health Promotion with a mission to promote dialogue among researchers, practitioners, and policy makers worldwide on the integration and application of research findings and practical experience to improve population health.

PCD's vision is to serve as an influential journal in the dissemination of proven and promising public health findings, innovations, and practices with editorial content respected for its integrity and relevance to chronic disease prevention.

PCD Staff

Brandi Baker, MBA

Production Coordinator
Contractor, Akima Data Management

Kim Bright, PMP

Information Technology
Project Manager
Contractor, Akima Data Management

Alicia Earl, MS, MEd, CCC-SLP

Marketing and
Communications Writer/
Editor
Contractor, Akima Data Management

Kate Harris, BA

Technical Editor
Contractor, Akima Data Management

Leonard Jack, Jr, PhD, MSc

Editor in Chief

Ivory M. Jones, MS

Editorial Assistant
Contractor, Akima Data Management

Shawn Jones

Software Engineer
Contractor, Akima Data Management

Camille Martin, RD, LD

Senior Technical Editor

Susan McKeen, BA

Senior Software Engineer
Contractor, Akima Data Management

Lesli Mitchell, MA

Managing Editor

Melissa Newton, BS, CCPH

Marketing and
Communications
Specialist
Contractor, Akima Data Management

Rosemarie Perrin

Technical Writer-Editor
Contractor, Akima Data Management

Sasha Ruiz, BBA

Health Communications
Specialist

Robin Sloan, MA

Technical Editor
Contractor, Akima Data Management

Martin Steib

Multimedia Specialist
Contractor, Akima Data Management

Ellen Taratus, MS

Senior Technical Editor
Contractor, Akima Data Management

Caran Wilbanks, BA

Lead Technical Writer-
Editor



Associate Editors

Arsham Alamian, PhD, MSc, FACE

Associate Dean for Health Studies
Associate Professor
University of Miami
School of Nursing and Health Studies
Coral Gables, Florida

Semra Aytur, PhD, MPH

Associate Professor
Department of Health Management and Policy
University of Miami
University of New Hampshire
Durham, New Hampshire

Ronny A. Bell, PhD, MS

Professor, Department of Social Sciences and Health Policy
Wake Forest School of Medicine
Director, Office of Cancer Health Equity
Wake Forest Health Comprehensive Cancer Center
Winston-Salem, North Carolina

Erin Bouldin, PhD, MPH

Assistant Professor
Department of Health and Exercise Science
Beaver College of Health Sciences
Appalachian State University
Boone, North Carolina

Tammy Calise, DrPH

Director, John Snow, Inc. Healthy Communities
Boston, Massachusetts

Vinay Cheruvu, PhD

Associate Professor of Biostatistics
Division of Biostatistics, Environmental Health Sciences, and Epidemiology
College of Public Health, Kent State University
Kent, Ohio

Pyone Cho, MD, MPH

Epidemiologist
Division of Diabetes Translation
National Center for Chronic Disease Prevention and Health Promotion
Centers for Disease Control and Prevention
Atlanta, Georgia

Sarah Conderino, MPH

Data Scientist
Department of Population Health
NYU Grossman School of Medicine
New York, New York

Patricia Da Rosa, DDS, MPH, MSc

Research Associate/Public Health & Health Outcomes Data Analyst
Population Health Evaluation Center
Office of Nursing Research
South Dakota State University
Brookings, South Dakota

Julia Dilley, PhD, MES

Senior Research Scientist/Epidemiologist
Multnomah County Health Department and Oregon Public Health Division
Portland, Oregon

Z. Tuba Suzer Gurtekin, PhD, MS, MBA

Assistant Research Scientist
University of Michigan Institute for Social Research
Ann Arbor, Michigan

Jeanette Gustaf, PhD, MPH

Associate Professor
Department of Epidemiology, Tulane Prevention Research Center
School of Public Health and Tropical Medicine
Tulane University
New Orleans, Louisiana

Daikwon Han, PhD

Associate Professor
Department of Epidemiology and Biostatistics
Texas A&M University
College Station, Texas

Nikki A. Hawkins, PhD

Lead Health Scientist
Office on Smoking and Health
National Center for Chronic Disease Prevention and Health Promotion
Centers for Disease Control and Prevention
Atlanta, Georgia

Linda D. Highfield, PhD, MS

Associate Professor of Community Health
Practice & Epidemiology
UTHealth School of Public Health
Associate Professor of Internal Medicine
UTHealth McGovern Medical School
Houston, Texas

Elizabeth Winter Holt, PhD, MPH

Assistant Professor
Department of Health Sciences
Furman University
Greenville, South Carolina

Brittney Keller-Hamilton, MPH, PhD

Program Manager
Division of Epidemiology
College of Public Health
The Ohio State University
Columbus, Ohio

Robert Krikorian, PhD

Professor, Department of Psychiatry &
Behavioral Neuroscience
Director, Cognitive Aging Program
University of Cincinnati Academic Health
Center
Cincinnati, Ohio

Bian Liu, PhD, MS

Assistant Professor
Department of Population Health Science
and Policy
Institute for Translational Epidemiology
Department of Environmental Medicine and
Public Health
Icahn School of Medicine at Mount Sinai
New York, New York

Zhen-qiang Ma, MD, MPH, MS

Division Director
Division of Community Epidemiology
Bureau of Epidemiology
Pennsylvania Department of Health
Harrisburg, Pennsylvania
Adjunct Assistant Professor
Graduate School of Public Health
University of Pittsburgh
Pittsburgh, Pennsylvania

Sarah L. Martin, PhD, MS

Adjunct Faculty University of Maine
Department of Community Health Education
Farmington, Maine

Kevin Matthews, PhD, MS

Health Geographer
National Center for Chronic Disease
Prevention and Health Promotion
Centers for Disease Control and Prevention
Atlanta, Georgia

Katerina Maximova, PhD

Murphy Family Foundation Chair in Early
Life Interventions
Scientist, MAP Centre for Urban Health
Solutions at St. Michael's Hospital
Associate Professor
Dalla Lana School of Public Health
University of Toronto
Toronto, Ontario, Canada

Jane A. McElroy, PhD

Associate Professor
University of Missouri, Family and
Community Medicine Department
Columbia, Missouri

Jeremy Mennis, PhD, MS

Professor
Department of Geography and Urban
Studies
Temple University
Philadelphia, Pennsylvania

Michael J. Parks, PhD

Research Associate, Institute for
Translational Research in Children's Mental
Health, University of Minnesota
Senior Research Scientist, Health Promotion
and Chronic Disease Division, Minnesota
Department of Health
Minneapolis, Minnesota

Anna Porter, PhD, MPH

Consultant, Ramboll
Raleigh, North Carolina

Austin Porter III, DrPH, MPH

Deputy Chief Science Officer, Arkansas
Department of Health
Assistant Professor, Health Policy and
Management
Fay W. Boozman College of Public Health
University of Arkansas for Medical Sciences
Little Rock, Arkansas

Terrinieka Williams Powell, PhD

Associate Professor
Department of Population, Family &
Reproductive Health
Johns Hopkins University Bloomberg School of
Public Health
Baltimore, Maryland

Irene Prabhu Das, PhD, MPH

Health Scientist Administrator
Division of Scientific Programs
All of Us Research Program
Office of the Director
National Institutes of Health
Rockville, Maryland

Jessica M. Robbins, PhD

Public Health Epidemiologist/IRB
Administrator
Philadelphia Department of Public Health
Philadelphia, Pennsylvania

Daniel Sarpong, PhD

Director, Center for Minority Health Disparities
Research & Education
Endowed Chair of Health Disparities
Professor of Biostatistics, College of Pharmacy
Xavier University
New Orleans, Louisiana

Deborah Salvo, PhD

Assistant Professor of Public Health
George Warren Brown School
Washington University in St. Louis
St. Louis, Missouri

Charlotte D. Smith, PhD

UC Berkeley School of Public Health
Environmental Health Sciences
Berkeley, California

Sergey Sotnikov, PhD

Economist
Performance Development, Evaluation, and
Training Branch
Division of Performance Improvement and
Field Services
Center for State, Tribal, Local, and Territorial
Support
Centers for Disease Control and Prevention
Atlanta, Georgia

Mikiko Terashima, PhD, MSc

School of Planning
Healthy Populations Institute
Department of Community Health and
Epidemiology
Dalhousie University
Halifax, Nova Scotia, Canada

Tung-Sung Tseng, PhD, MPH

Associate Professor
Behavioral and Community Health Sciences
Department
School of Public Health
Louisiana State University Health Sciences
Center
New Orleans, Louisiana

Camille Vaughan, MD, MS

Associate Section Chief for Research in
Geriatrics and Gerontology
Emory School of Medicine
Atlanta, Georgia

Trang VoPham, PhD, MS, MPH

Epidemiology Program
Division of Public Health Sciences
Fred Hutchinson Cancer Research Center
Seattle, Washington

Yan Wang, PhD

Epidemiologist
Division of Population Health
National Center for Chronic Disease
Prevention and Health Promotion
Centers for Disease Control and Prevention
Atlanta, Georgia

Korede Yusuf, MBBS, MPH, PhD

Assistant Professor
Adelphi University College of Nursing and
Public Health
Garden City, New York

Janice C. Zgibor, RPh, PhD, CPH, FACE

Associate Dean for Academic Affairs
Director of the DrPH Program
Professor of Epidemiology
College of Public Health
University of South Florida

EDITORIAL BOARD

Sergio Aguilar-Gaxiola, MD, PhD

Professor of Clinical Internal Medicine
School of Medicine, University of California,
Davis
Sacramento, California

Collins O. Airhihenbuwa, PhD, MPH

Professor
Health Policy and Behavioral Sciences
Global Research Against
Noncommunicable Diseases
Georgia State University of Public Health
Atlanta, Georgia

Philip M. Alberti, PhD

Senior Director, Health Equity Research and
Policy
Association of American Medical Colleges
Washington, DC

Zachary Brian, DMD, MHA

Director
North Carolina Oral Health Collaborative
Cary, North Carolina

Pamela L. Carter-Nolan, PhD, MPH

Director, Master of Public Health Program
Howard University Graduate School
Washington, DC

Oliver Ezechi, MD, MPH, MSc, PhD

Director of Research
Nigerian Institute of Medical Research
Lagos, Nigeria

Tiana Garrett-Cherry, PhD, MPH

Consultant and Owner
Indices Consulting
Alexandria, Virginia

Jeffrey E. Hall, PhD, MA, MSPH, CPH

Deputy Director, Office of Minority Health
and Health Equity and Chief of the Minority
Health and Health Equity Team
Office of Minority Health and Health Equity
Centers for Disease Control and Prevention
Atlanta, Georgia

Vida Henderson, PhD, PharmD, MPH, MFA

Director, Community Engagement and
Health Equity Office, University of Illinois
Cancer Center
Research Assistant Professor, University of
Illinois School of Public Health
Chicago, Illinois

Kathleen Hoke, JD

Professor, University of Maryland Carey
School of Law
Director, Network for Public Health Law–
Eastern Region
Director, Legal Resource Center for Public
Health Policy
Baltimore, Maryland

Sara L. Huston, PhD

Lead Chronic Disease Epidemiologist
Maine Center for Disease Control and
Prevention
Augusta, Maine

Udhayashankar Kanagasabai, MD, MPH, MSc

Health Scientist, Gender and Youth Team
Division of Global HIV and Tuberculosis
Centers for Disease Control and Prevention
Atlanta, Georgia

Rachel Kaufman, PhD, MPH

Associate Director for Science
National Center for Chronic Disease
Prevention and Health Promotion
Centers for Disease Control and Prevention
Atlanta, Georgia

Lloyd Michener, MD

Professor, Department of Family Medicine
& Community Health, Duke School of
Medicine
Clinical Professor, Duke School of Nursing
Adjunct Professor, Public Health
Leadership, UNC Gillings School of Global
Public Health

Christine Riedy Murphy, PhD, MPH

Delta Dental Associate Professor and Chair
Department of Oral Health Policy and
Epidemiology
Harvard School of Dental Medicine
Boston, Massachusetts

Shamarial Roberson, DrPH, MPH

President of Indelible Business Solutions
Health and Human Services
Consultant and Owner of DSR Consulting
and Management, LLC
Tallahassee, Florida

Magaly Rodriguez de Bittner, PharmD

Professor and Associate Dean for Clinical
Services and Practice Transformation
Department of Pharmacy Practice and
Science
University of Maryland School of Pharmacy
Baltimore, Maryland

Gia Rutledge, MPH

Lead Health Scientist, Division of Diabetes
Translation
National Center for Chronic Disease
Prevention and Health Promotion
Centers for Disease Control and Prevention
Atlanta, Georgia

Victor D. Sutton, PhD, MPPA

Director for the Office of Preventive Health
and Health Equity
Mississippi State Department of Health
Ridgeland, Mississippi

Susan Swider, PhD, PHNA-BC, FAAN

Professor, Department of Community,
Systems and Mental Health Nursing
Rush University
Chicago, Illinois

Vetta Sanders Thompson, PhD

E. Desmond Lee Professor of Racial and
Ethnic Studies
George Warren Brown School of Social Work
Washington University in St. Louis
St. Louis, Missouri

Raegan Tuff, PhD, MPH

Public Health Analyst
Office of Informatics and Information
Resources Management
National Center for Chronic Disease
Prevention and Health Promotion, Office of
the Director
Centers for Disease Control and Prevention
Atlanta, Georgia

Matthew Valliere, MPA

Chief Executive Officer
CareSouth Medical & Dental
Baton Rouge, Louisiana



STATISTICS REVIEW COMMITTEE

Laurie K. Barker, MPH

Health Statistician
Division of Viral Hepatitis
National Center for HIV,
Viral Hepatitis, STD, and TB Prevention
Centers for Disease Control
and Prevention
Atlanta, Georgia

Vinay Cheruvu, PhD

Associate Professor of Biostatistics
Division of Biostatistics, Environmental
Health Sciences, and Epidemiology
College of Public Health
Kent State University
Kent, Ohio

B. Rey de Castro, ScD

Mathematical Statistician
Quantitative Sciences & Data
Management Branch
Division of Tuberculosis Elimination
National Center for HIV/AIDS, Viral
Hepatitis, STD, and TB Prevention
Centers for Disease Control and
Prevention
Atlanta, Georgia

Jenine K. Harris, PhD

Associate Professor
George Warren Brown School of Social
Work
Washington University in St. Louis
St. Louis, Missouri

Tao He, PhD

Assistant Professor
Department of Mathematics
San Francisco State University
San Francisco, California

Yi-An Ko, PhD

Assistant Research Professor
Department of Biostatistics and
Bioinformatics
Rollins School of Public Health
Lead Biostatistician
Division of Cardiology
School of Medicine
Emory University
Atlanta, Georgia

Rui Li, PhD, MM, BM

Senior/Lead Economist
Office of the Director
Division of Reproductive Health
National Center for Chronic Disease Prevention
and Health Promotion
Centers for Disease Control and Prevention
Atlanta, Georgia

Zhen-qiang Ma, MD, MPH, MS

Division Director
Division of Community Epidemiology
Bureau of Epidemiology
Pennsylvania Department of Health
Harrisburg, Pennsylvania
Adjunct Assistant Professor
Graduate School of Public Health
University of Pittsburgh
Pittsburgh, Pennsylvania

Shelley H. Liu, PhD

Assistant Professor
Department of Population Health Sciences
and Policy
Icahn School of Medicine at Mount Sinai
New York, New York

Lazarous Mbulo, PhD

Health Scientist
Office on Smoking and Health
National Center for Chronic Disease Prevention
and Health Promotion
Centers for Disease Control and Prevention
Atlanta, Georgia

Michael J. Monsour, PhD

Women's Health and Fertility Branch
Division of Reproductive Health
National Center for Chronic Disease Prevention
and Health Promotion
Centers for Disease Control and Prevention
Atlanta, Georgia

Brian H. Nathanson, PhD

Chief Executive Officer
OptiStatim, LLC
Longmeadow, Massachusetts
Enteric Diseases Epidemiology Branch
Division of Foodborne, Waterborne, and
Environmental Diseases
National Center for Emerging and Zoonotic
Infectious Diseases
Centers for Disease Control and Prevention
Atlanta, Georgia

James S. Parrott, PhD

Director
Methodology and Statistics Support Team
School of Health Professions
Rutgers University
Piscataway, New Jersey

LaTonia Richardson, PhD, MS

Statistician
Analytics Team
Enteric Diseases Epidemiology Branch
Division of Foodborne, Waterborne, and
Environmental Diseases
National Center for Emerging and Zoonotic
Infectious Diseases
Centers for Disease Control and Prevention
Atlanta, Georgia

Daniel Sarpong, PhD

Director, Center for Minority Health
Disparities Research and Education
Endowed Chair of Health Disparities
Professor of Biostatistics
College of Pharmacy
Xavier University
New Orleans, Louisiana

Sanjay Shete, PhD

Betty B. Marcus Chair in Cancer Prevention
The University of Texas MD Anderson
Cancer Center
Department of Biostatistics
Houston, Texas

Kate M. Shaw, PhD

Health Scientist
Office of the Associate Director for Science
National Center for Injury Prevention and
Control
Centers for Disease Control and Prevention
Atlanta, Georgia

Ruben A. Smith, PhD, MS

Senior Statistician
Women's Health and Fertility Branch
Division of Reproductive Health
National Center for Chronic Disease
Prevention and Health Promotion
Centers for Disease Control and Prevention
Atlanta, Georgia

Tyler C. Smith, PhD

Chair and Professor
Department of Community Health
School of Health and Human Services
National University
San Diego, California

Carmen D. Tekwe, PhD

Associate Professor of Biostatistics
Department of Epidemiology and
Biostatistics
School of Public Health
Indiana University – Bloomington
Bloomington, Indiana

Machell Town, PhD

Branch Chief
Population Health Surveillance Branch
Division of Population Health
National Center for Chronic Disease
Prevention and Health Promotion
Centers for Disease Control and Prevention
Atlanta, Georgia

Ming Wang, PhD

Associate Professor
Division of Biostatistics and Bioinformatics
Department of Public Health Sciences
College of Medicine
Pennsylvania State University
Hershey, Pennsylvania

Ying Zhang, MD, MS, PHD

Associate Professor of Biostatistics
Director, Center for American Indian
Health Research
Department of of Biostatistics and
Epidemiology
Hudson College of Public Health
The University of Oklahoma Health
Sciences Center
Oklahoma City, Oklahoma



PCD
**PREVENTING
CHRONIC DISEASE**

Leonard Jack, Jr, PhD, MSc
Editor in Chief
Preventing Chronic Disease
(404) 645-3355
pcdeditor@cdc.gov

4770 Buford Highway, NE
Mailstop F-80
Atlanta, GA, 30341-3717

www.cdc.gov/pcd