

# Collaborative Practice Agreements and Pharmacists' Patient Care Services

**A RESOURCE FOR DECISION MAKERS**



Pharmacists can improve patients' health and the health care delivery system if they are part of the patient's health care team. One way to meet this goal is with a collaborative practice agreement (CPA) between pharmacists and other health care providers.<sup>1</sup> Patient care services provided by pharmacists can reduce fragmentation of care, lower health care costs, and improve health outcomes.<sup>1</sup> A 2010 study found that patient health improves significantly when pharmacists work with doctors and other providers to manage patient care.<sup>2</sup> The Community Preventive Services Task Force also found strong evidence that team-based care can improve blood pressure control when a pharmacist is included on the team.<sup>3</sup>

States regulate pharmacists' patient care services through "scope of practice" and other laws and related rules, including boards of pharmacy and medicine regulations. Depending on each state's laws, pharmacists can work with other health care providers through CPAs to perform an array of patient care services (Figure 1).

In January 2012, the American Pharmacists Association (APhA) Foundation brought together a group of 22 national subject

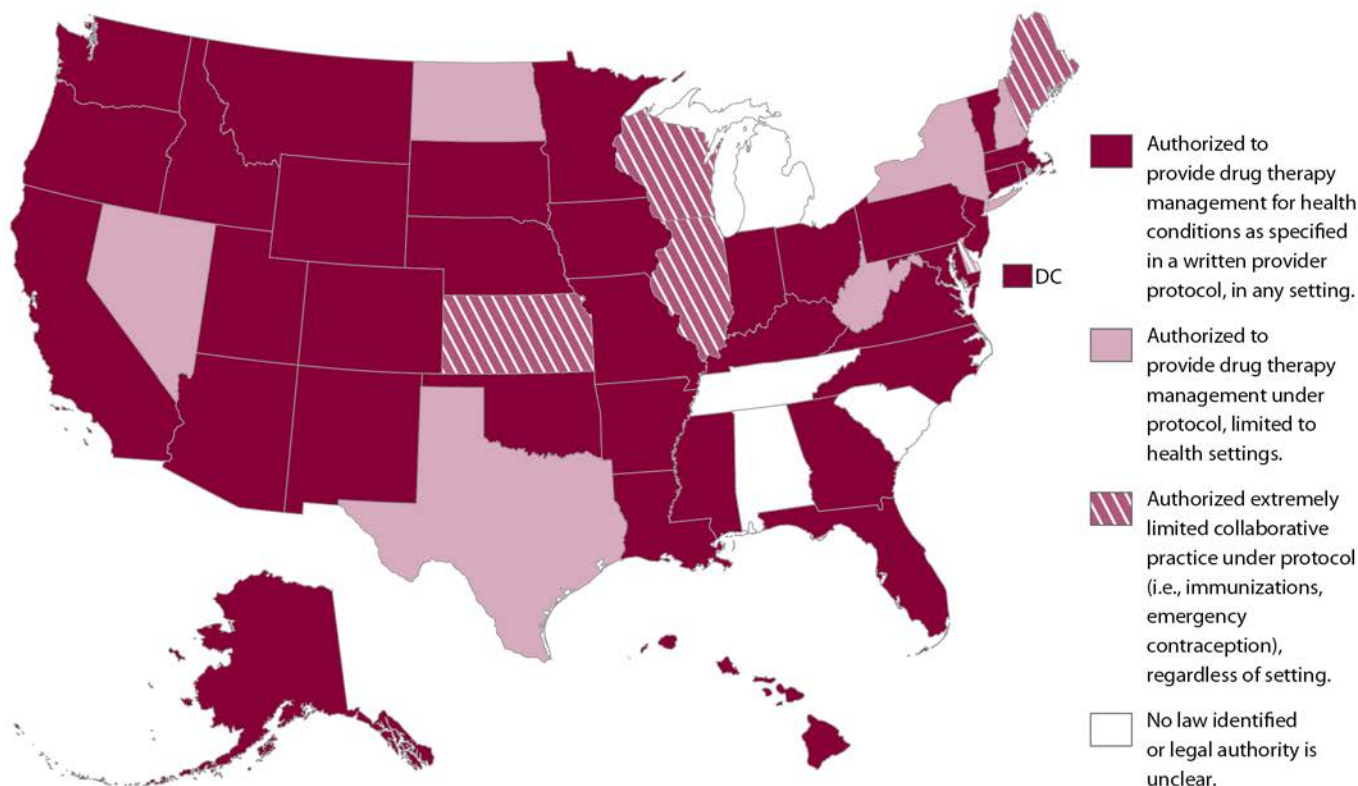
### Pharmacist Collaborative Practice Agreement (CPA)

A formal agreement in which a licensed provider makes a diagnosis, supervises patient care, and refers patients to a pharmacist under a protocol that allows the pharmacist to perform specific patient care functions.

matter experts to identify evidence for effective policies, practices, and key supports and barriers to expanding the role of pharmacists in delivering patient care services and entering into CPAs.<sup>4</sup>

Consistent with the findings of the Office of the Chief Pharmacist 2011 Report to the U.S. Surgeon General,<sup>1</sup> the group found that broad access to patient care services delivered by pharmacists is limited by policy and compensation barriers. The group proposed several strategies for expanding pharmacists' patient care services through team-based care and CPAs.<sup>4</sup> Decision makers can use these strategies to build

**Figure 1.** Map of States with Laws Explicitly Authorizing Pharmacist Collaborative Practice Agreements, 2012



Note: Physician delegation is considered permissive in MI and WI, allowing physicians and pharmacists to enter into CPAs.

and strengthen partnerships between pharmacists and other health care providers to improve patient care.

### Strategies for Advancing Pharmacists' Patient Care Services

**Create and expand an infrastructure that embeds pharmacists' patient care services and collaborative practice agreements into care, while creating ease of access for patients.**

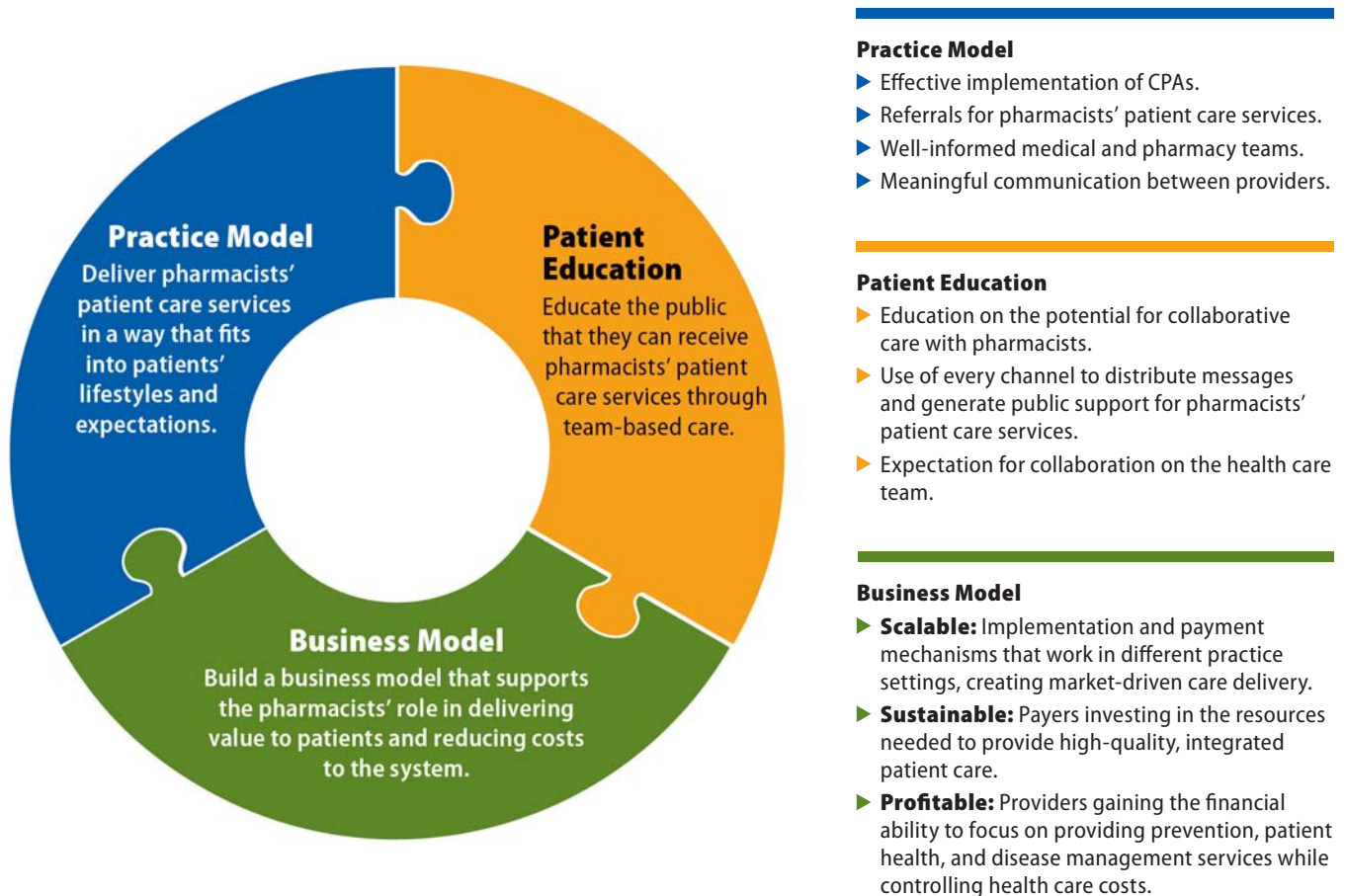
Pharmacists' patient care services, including those provided through CPAs, can reduce fragmentation of care and improve health outcomes if they are set up properly.<sup>1</sup> Infrastructure that embeds pharmacists' patient care services into current care processes and public education initiatives could help patients understand the services available to them. Processes may need to be changed within different practice settings to integrate pharmacists. Components of this infrastructure and associated process changes include the practice model, business model, and patient education (Figure 2).

### Terms Used to Describe Pharmacists' Patient Care Services

*Medication Therapy Management (MTM):* A distinct service or group of services that optimizes therapeutic outcomes for individual patients. MTM includes five core elements: medication therapy review, personal medication record, medication-related action plan, intervention and/or referral, and documentation and follow-up.<sup>6</sup>

*Collaborative Drug Therapy Management (CDTM):* A collaborative practice agreement between one or more providers and pharmacists in which qualified pharmacists working within the context of a defined protocol are permitted to assume professional responsibility for performing patient assessments, counseling, and referrals; ordering laboratory tests; administering drugs; and selecting, initiating, monitoring, continuing, and adjusting drug regimens.<sup>7</sup>

**Figure 2.** Infrastructure and Process Changes to Integrate Pharmacists' Patient Care Services





### Case Example: Iowa

Osterhaus Pharmacy in eastern Iowa provides immunizations to patients through CPAs with Maquoketa Family Clinic, a local medical group of family practice doctors and nurse practitioners. The pharmacy also provides MTM services to eligible Medicaid and Medicare Part D beneficiaries with chronic diseases. MTM services are provided through informal agreements with Maquoketa Family Clinic and another local clinic, Medical Associates of Maquoketa. To develop an effective process, the pharmacy created practice and business models that highlight the benefits of formal collaboration for those involved and build on existing informal relationships. For example, as part of the immunization protocol, pharmacists educate patients about their eligibility for these services by telephone, in person, or by fax, depending on which method is most convenient for the patient. The pharmacist administers the immunizations according to the terms of the CPA, documents these services in the pharmacy system, and communicates this information to the doctor as agreed. Osterhaus Pharmacy's staff believe the business model is sustainable because immunizations and MTM services are reimbursed by many private and public insurers.<sup>5</sup>

### ***Use simple, understandable, and empowering language when referring to pharmacists' patient care services.***

Different terms can be used to describe similar patient care services provided by pharmacists. Effective use of these precise terms can aid decision makers as they promote the creation of meaningful CPAs and the inclusion of pharmacists' services in routine patient care.

Pharmacists' clinical capabilities include the following:

- ▶ Communicating and collaborating with doctors and other prescribers to provide patient care.
- ▶ Improving the quality of medication management and health outcomes.<sup>2</sup>
- ▶ Improving public health outcomes.<sup>3</sup>

### ***Allow the health care providers who enter into the collaborative practice agreement to define the details of each agreement.***

Many successful collaborative relationships develop and evolve as pharmacists and other providers grow to trust each other.<sup>1</sup> As this trust grows, providers can modify CPAs to ensure that local partnerships are meeting patients' needs. Successful CPAs are written, executed, reviewed, and renewed on the terms set between the collaborating health care professionals. This approach allows different types of providers to find the best ways to set up these agreements and overcome local challenges, while still encouraging providers to practice to the fullest extent of their licenses.

### Case Example: Arizona

Since 2000, Arizona law has authorized CPAs between pharmacists and doctors in specified health facilities (ARS §32-1970 [A–D]). The law was amended in 2011 by Senate Bill (SB) 1298 (Ariz Sess Laws Ch 103 [2011]) to allow pharmacists in any setting to enter into CPAs with doctors and nurse practitioners.

Pharmacists at El Rio Community Health Center<sup>8</sup> have worked with local doctors since 2000. El Rio is the largest local provider of medical services to uninsured and Medicaid patients in Pima County. Each pharmacist and provider negotiates the terms of the CPA to allow the pharmacist to care for patients with diabetes, high blood pressure, and high cholesterol. Compared with other health centers, El Rio reports lower costs, more screenings, and fewer emergency room visits among its patients.<sup>9</sup>

SB 1298 allowed health care providers at El Rio to set up CPAs without changing their diabetes care protocol. It removed requirements to renew CPAs annually or obtain Board of Pharmacy approval for each protocol. El Rio staff found this change reduced the administrative burden and cost for pharmacists and providers. The new law also removed a requirement for a separate CPA for each health condition for each individual patient. This change allows pharmacists to work more efficiently with other providers to provide care to patients with multiple chronic conditions.<sup>10</sup>

***Examine and redesign health professional scope of practice laws, education curriculums, and operational policies to create synergy, promote collaboration, and make the best use of support staff.***

To make the best use of all providers on a health care team, different health professions can work together to examine and revise scope of practice laws. For example, in 2009, to reduce workforce shortages, Pennsylvania officials authorized changes in the scope of practice laws for nurses, physician assistants, and other licensed health care providers to allow them to practice to the full extent of their licensure and training.<sup>11</sup> If properly written, scope of practice laws can create an environment that can lead to successful CPAs and interdisciplinary teams, allowing all professionals to practice at the top of their licenses and allowing support staff to take on more roles as appropriate.<sup>1</sup> Laws, education, and policies can foster the integration of pharmacists and the services they provide into team-based care models.

To help make CPAs and the team-based care approach an integrated part of health care practice,

- ▶ Providers and student health professionals need education about the value of team-based care.
- ▶ Students who work on interdisciplinary teams should be taught how to work with other health professionals to improve patient care.

***Provide incentives and support for the adoption of electronic health records and the use of technology in pharmacists' patient care services.***

CPAs that bring together pharmacists and other providers depend on information being shared between all members of a health care team. Electronic health records (EHRs) and other health information technology (HIT) can support the expansion of this care model. Computer systems that can interact with each other and are integrated into current pharmacy and medical systems allow pharmacists to send and receive care notes, intervention records, lab and assessment values, and patient information.

A 2011 survey of Nebraska pharmacists found that only 8% of respondents could access the EHRs used by their patients' health care providers. In contrast, 80% thought they should be able to access these records.<sup>12</sup> Integrated systems allow for better medication reconciliation, hospital discharge, transitions of care, coordinated billing for services, patient referrals, and understanding of patient health status.<sup>13</sup>

**Health Information Technology Legislation and Incentives**

- ▶ Under the Health Information Technology for Economic and Clinical Health (HITECH) Act (PL 111-5), incentive payments are specifically tied to achieving advancements in health care processes and outcomes, also called "meaningful use" criteria.
- ▶ Pharmacists and pharmacies are not listed as eligible providers for aid through these incentive programs, which may impact their use of EHRs and HIT. Providing incentives to pharmacists could increase their use of EHRs, making it easier to participate in collaborative practice agreements.

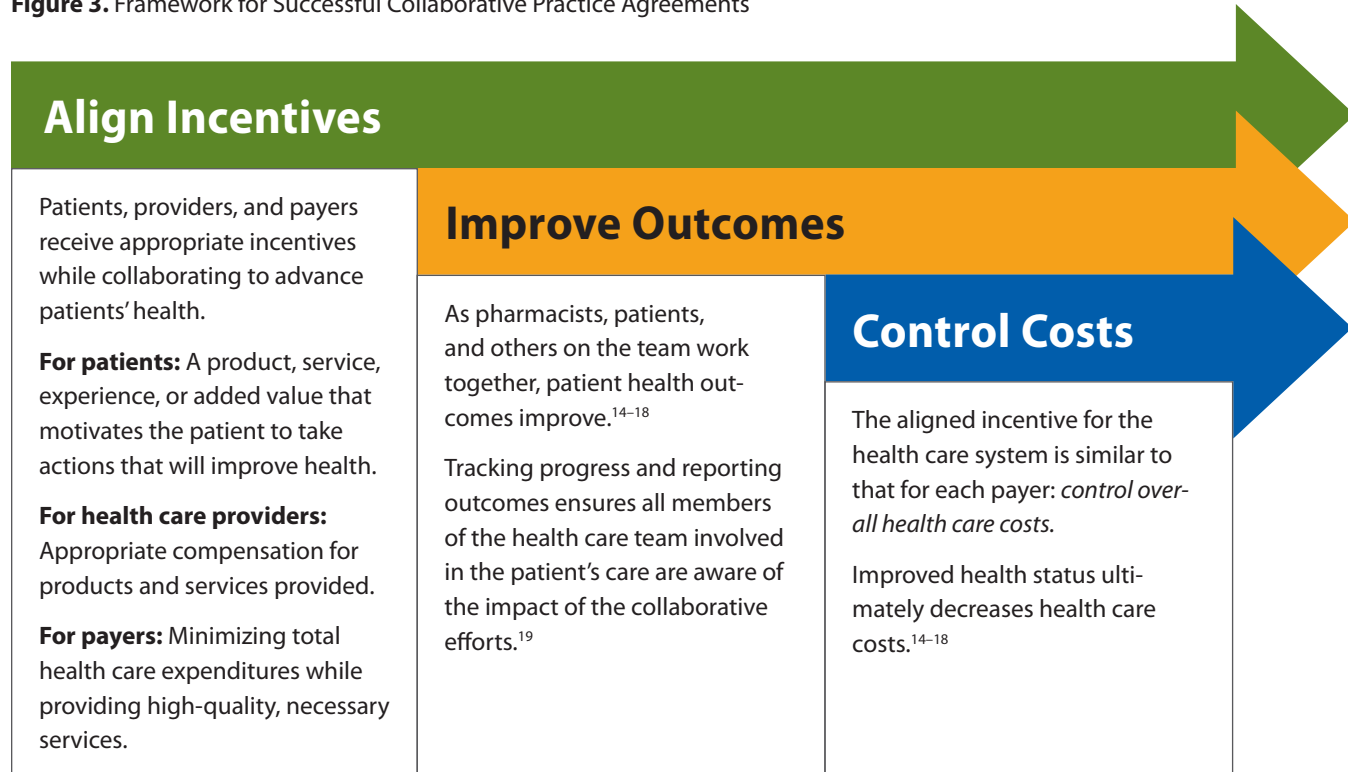
***Properly align incentives based on meaningful process and outcome measures for patients, payers, providers, and the health care system.***

Successful CPAs include two core components: (1) appropriate incentives, which in turn are based on (2) meaningful process and outcome measures for all providers involved in patient care.<sup>6</sup> A simple framework describes how this could be accomplished (Figure 3): *Align the incentives. Improve the outcomes. Control the costs.*

**Case Example: El Rio Community Health Center**

At Arizona's El Rio Community Health Center, switching to an EHR system helped providers set up CPAs with local pharmacists for the center's 800 patients who are receiving diabetes management services. Doctors and nurse practitioners refer patients to the pharmacist through the EHR. The pharmacist care plan is then documented in the EHR, along with a copy of the CPA. Changes to patients' medications—such as the introduction of a new medication or a change to a current prescription—are tracked in the system, and this information is accessible to the provider and pharmacist. The new system has created demand for more resources to be devoted to health information technology services and data collection and storage.<sup>10</sup>

**Figure 3.** Framework for Successful Collaborative Practice Agreements



### Case Examples: Pharmacist-Provided Care for Controlling Diabetes, High Blood Pressure, and High Cholesterol

The Asheville Project, the Patient Self-Management Program for Diabetes (PSMP), and the Diabetes Ten City Challenge (DTCC) were efforts by self-insured employers to provide education and mentoring for employees with chronic health problems such as diabetes, high blood pressure, and high cholesterol. Patients were enrolled in collaborative care programs that included a community pharmacist on their health care team.<sup>14-18</sup> When the programs were assessed, researchers found the following benefits:

#### *Savings on Overall Health Spending*

- ▶ **Asheville:** Average net savings of \$1,622–\$3,356 per person per year.<sup>14,15</sup>
- ▶ **PSMP:** Average net savings of \$918 per person per year.<sup>16</sup>
- ▶ **DTCC:** Average net savings of \$1,079 per person per year.<sup>17,18</sup>

#### *Improved Patient Health*

- ▶ **Asheville:** 50% average reduction in number of sick days.<sup>14,15</sup>
- ▶ **PSMP:** 100% of study participants had their glycosylated hemoglobin (A1C) level tested; 94% met the Health Plan Employer Data Information Set (HEDIS) goal of 7% or less for A1C.<sup>16</sup>
- ▶ **DTCC:** A1C and screening rates improved to 97%; 91% of patients achieved an A1C level that met the HEDIS goal.<sup>17,18</sup>

#### *Increased Preventive Care*

- ▶ **PSMP:** 78% of patients received flu shots and 82% received foot exams.<sup>16</sup>
- ▶ **DTCC:** 65% of patients received flu shots and 81% received foot exams.<sup>17,18</sup>

## Action Steps

State scope of practice laws can allow for broad, unrestricted CPAs between pharmacists and other providers. To build and strengthen collaborative practices, decision makers can implement the following strategies, which were proposed by the APhA Foundation's expert group:

- ▶ Learn about the types of patient care services that pharmacists can provide.
- ▶ Understand how policies can allow local providers to determine the scope of CPAs and include pharmacists on health care teams.
- ▶ Promote viable business models for pharmacists' patient care services.
- ▶ Support programs that educate patients about their pharmacist's role on their health care team.
- ▶ Set up interprofessional committees to discuss how scope of practice laws can expand the role of pharmacists and other health professionals in team-based care.
- ▶ Consider including pharmacists and pharmacies in HIT incentive programs.
- ▶ Align incentives for all members of the health care team to improve patient outcomes and control health care costs.

## Acknowledgments

The Centers for Disease Control and Prevention (CDC) would like to acknowledge Ben Bluml, Senior Vice President, Research and Innovation, and Lindsay Watson, Director, Applied Innovation, of the American Pharmacists Association Foundation as well as Dyann Matson Koffman, Health Scientist, CDC, and Siobhan Gilchrist, Columbus Technologies and Services, Inc., for their work developing these documents. CDC also would like to acknowledge the 22 national subject matter experts who contributed to the development of these documents through their participation in the American Pharmacists Association Foundation roundtable.<sup>4</sup>

## Suggested Citation

Centers for Disease Control and Prevention. *Collaborative Practice Agreements and Pharmacists' Patient Care Services: A Resource for Decision Makers*. Atlanta, GA: US Dept. of Health and Human Services, Centers for Disease Control and Prevention; 2013.

## References

1. Giberson S, Yoder S, Lee MP. *Improving Patient and Health System Outcomes through Advanced Pharmacy Practice. A Report to the U.S. Surgeon General*. Rockville, MD: Office of the Chief Pharmacist, US Public Health Service; 2011.
2. Chisholm-Burns MA, Kim Lee J, Spivey CA, Slack M, Herrer RN, Hall-Lipsy E, et al. US pharmacists' effect as team members on patient care: systematic review and meta-analyses. *Med Care*. 2010;48:923–33.
3. Guide to Community Preventive Services. Cardiovascular Disease Prevention and Control: Team-Based Care to Improve Blood Pressure Control. Guide to Community Preventive Services Web site. [www.thecommunityguide.org/cvd/teambasedcare.htm](http://www.thecommunityguide.org/cvd/teambasedcare.htm). Accessed June 27, 2013.
4. American Pharmacists Association Foundation, American Pharmacists Association. Consortium recommendations for advancing pharmacists' patient care services and collaborative practice agreements. *J Am Pharm Assoc*. 2013;53:e132–41.
5. ICF International. *Osterhaus Pharmacy CDTM Policy Implementation Case Study Report*. Atlanta, GA: ICF International; 2012.
6. American Pharmacists Association, National Association of Chain Drug Stores Foundation. Medication therapy management in pharmacy practice: core elements of an MTM service model (version 2.0). *J Am Pharm Assoc*. 2008;48:341–53.
7. Hammond RW, Schwartz AH, Campbell M J, Remington TL, Chuck S, Blair MM, et al. Collaborative drug therapy management by pharmacists—2003. *Pharmacotherapy*. 2003;23:1210–25.
8. Pharmacy Services. El Rio Community Health Center Web site. [www.elrio.org/pharmacy.html](http://www.elrio.org/pharmacy.html). Accessed June 27, 2013.
9. Felt-Lisk S, Harris L, Lee M, Nyman R. *Evaluation of HRSA's Clinical Pharmacy Demonstration Projects. Final Report, Vol II: Case Studies*. Bethesda, MD: Health Resources and Services Administration, US Dept of Health and Human Services; 2004. [ftp://ftp.hrsa.gov/bphc/pdf/opa/CPDPvolume2finalreport.pdf](http://ftp.hrsa.gov/bphc/pdf/opa/CPDPvolume2finalreport.pdf). Accessed June 27, 2013.
10. ICF International. *Arizona and El Rio Community Health Center CDTM Policy Enactment and Implementation Case Study Report*. Atlanta, GA; ICF International; 2012.
11. LeBuhn R, Swankin, DA. *Reforming Scopes of Practice: A White Paper*. Washington, DC: Citizen Advocacy Center; 2010. [www.ncsbn.org/ReformingScopesofPractice-WhitePaper.pdf](http://www.ncsbn.org/ReformingScopesofPractice-WhitePaper.pdf). Accessed June 27, 2013.
12. Fuji KT, Gait KA, Siracuse MV, Christoffersen JS. Electronic health record adoption and use by Nebraska pharmacists. *Perspect Health Inf Manag*. 2011;8:1d.
13. Pharmacy e-Health Information Technology Collaborative. *The Roadmap for Pharmacy Health Information Technology Integration in U.S. Health Care*. Alexandria, VA: Pharmacy e-Health Information Technology Collaborative; 2011. [www.pharmacyhit.org/pdfs/11-392\\_RoadMapFinal\\_singlepages.pdf](http://www.pharmacyhit.org/pdfs/11-392_RoadMapFinal_singlepages.pdf). Accessed June 27, 2013.

14. Cranor CW, Bunting BA, Christensen DB. The Asheville Project: long-term clinical and economic outcomes of community pharmacy diabetes care program. *J Am Pharm Assoc.* 2003;43:173–84.
15. Bunting BA, Smith BH, Sutherland SE. The Asheville Project: clinical and economic outcomes of a community-based long-term medication therapy management program for hypertension and dyslipidemia. *J Am Pharm Assoc.* 2008;48:23–31.
16. Garrett DG, Bluml BM. Patient self-management program for diabetes: first-year clinical, humanistic, and economic outcomes. *J Am Pharm Assoc.* 2005;45:130–7.
17. Fera T, Bluml BM, Ellis WM, Schaller CW, Garrett DG. The Diabetes Ten City Challenge: interim clinical and humanistic outcomes of a multisite community pharmacy diabetes care program. *J Am Pharm Assoc.* 2008;48:181–90.
18. Fera T, Bluml BM, Ellis WM. The Diabetes Ten City Challenge: final economic and clinical results. *J Am Pharm Assoc.* 2009;49:383–91.
19. Wright JS, Wall HK, Briss PA, Schooley M. Million Hearts—where population health and clinical practice intersect. *Circ Cardiovasc Qual Outcomes.* 2012;5:589–91.

For more information please contact Centers for Disease Control and Prevention  
 1600 Clifton Road NE, Atlanta, GA 30333  
 Telephone: 1-800-CDC-INFO (232-4636)/TTY: 1-888-232-6348  
 E-mail: [cdcinfo@cdc.gov](mailto:cdcinfo@cdc.gov) • Web: [www.cdc.gov](http://www.cdc.gov)  
 Publication date: 10/2013

The findings and conclusions in this report are those of the authors and do not necessarily represent the official position of the Centers for Disease Control and Prevention.