

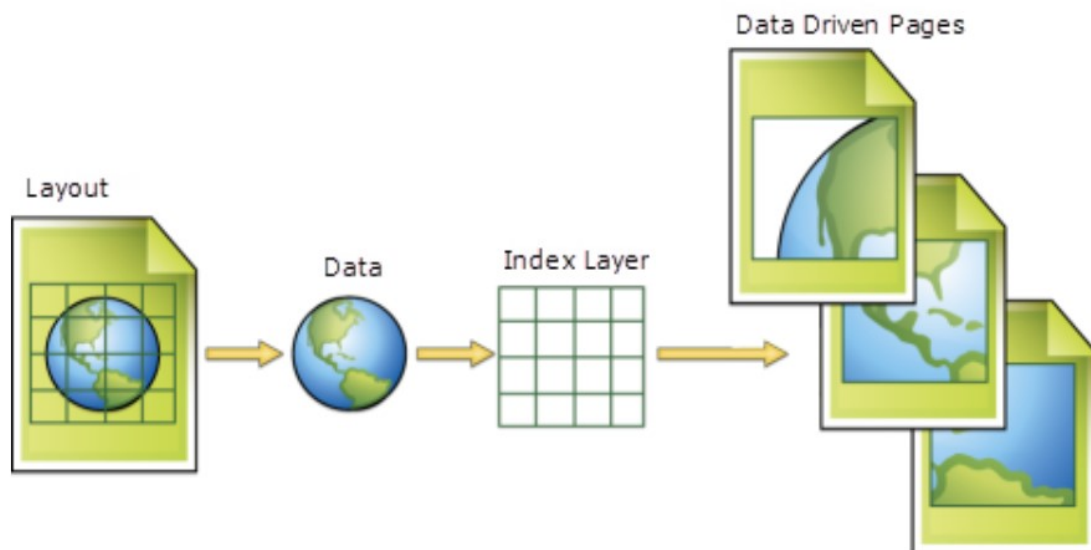
GIS Quick Tips

Presented by CDC's Division of Heart Disease and Stroke Prevention GIS Exchange

<https://www.cdc.gov/dhdsp/maps/gisx/index.html>

Creating Multiple Maps from a Single Map Document

Arcmap provides the capability for a user to easily create a series of close-up maps based on a single, larger map. This technique preserves the symbology of the original map, but allows the focus to shift to a smaller area of the larger map. This is accomplished using the Data Driven Pages feature in ArcMap. In order to run Data Driven pages, the large map must consist of polygon sections, or polygon boundaries that ArcMap can read as unique areas. ArcMap creates the smaller maps based on the polygon boundaries that exist within the larger map.



*image courtesy of ESRI.com



GIS Quick Tips

Presented by CDC's Division of Heart Disease and Stroke Prevention GIS Exchange

<https://www.cdc.gov/dhdsp/maps/gisx/index.html>

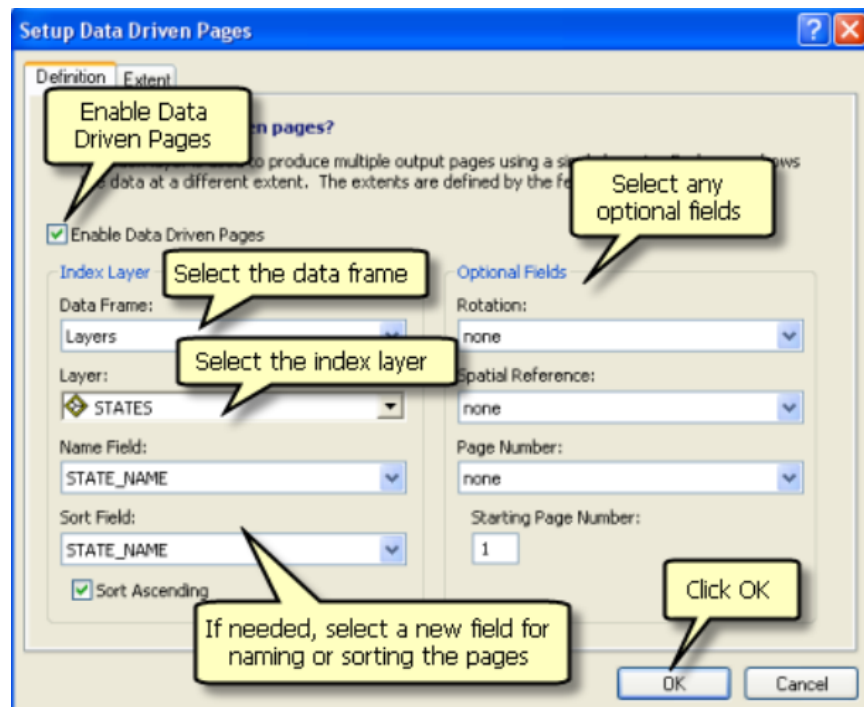
How to use Data Driven 'Pages

Go to the Customize Tab -> Toolbars -> Data Driven Pages to enable Data Driven Pages.

When the toolbar appears, click the icon to the far left



3. A dialogue box pops up



*image courtesy of ESRI.com

