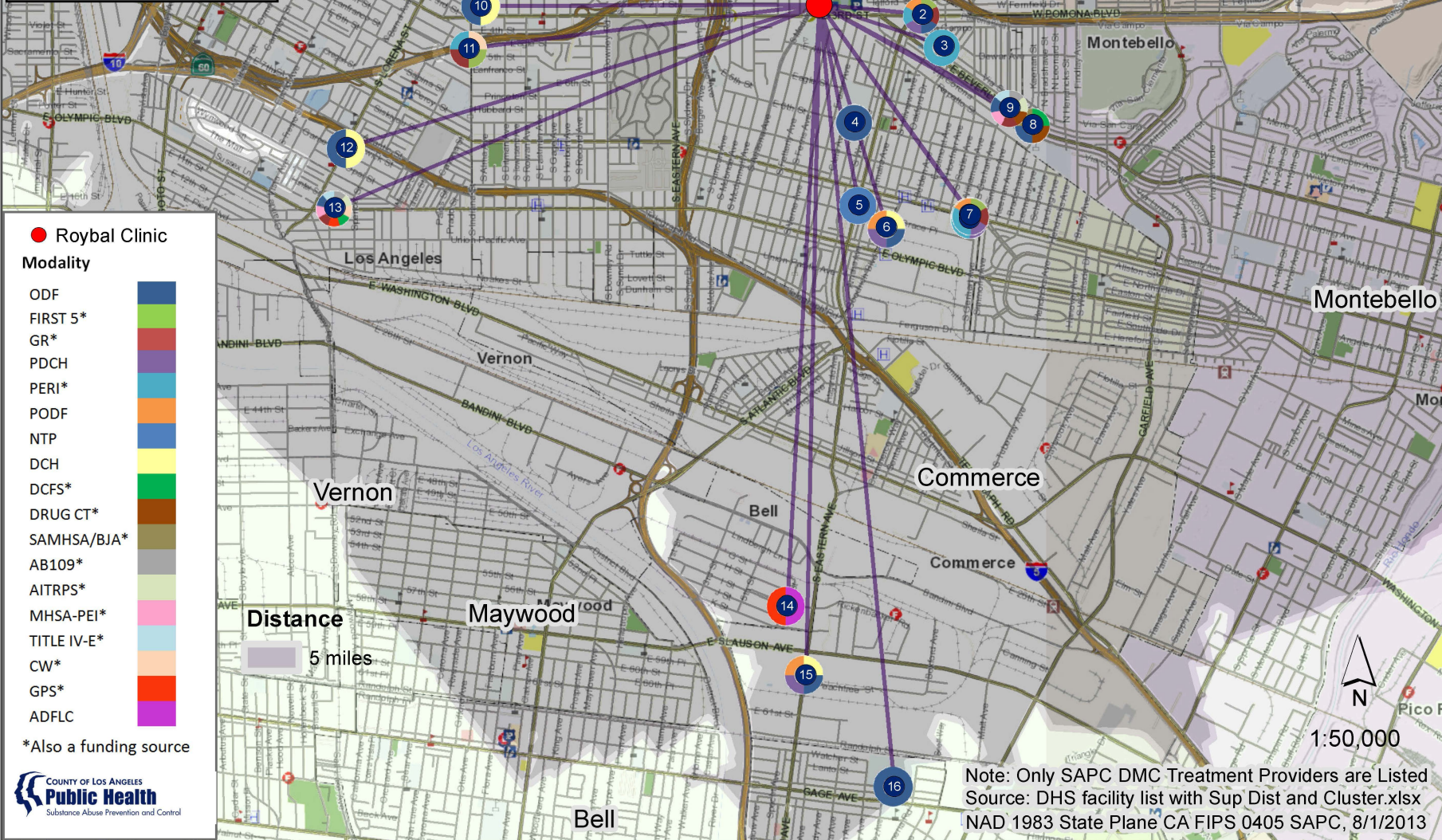
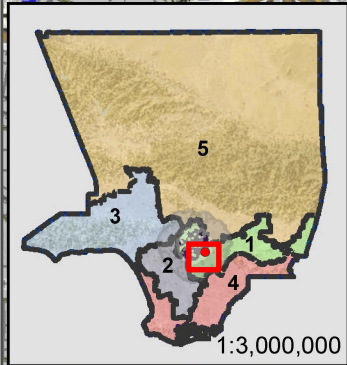


# Substance Abuse Prevention and Control

SAPC Treatment Providers Matched by Location  
with Edward R. Roybal Comprehensive Health Center



- Roybal Clinic
- Modality**
- ODF
- FIRST 5\*
- GR\*
- PDCH
- PERI\*
- PODF
- NTP
- DCH
- DCFS\*
- DRUG CT\*
- SAMHSA/BJA\*
- AB109\*
- AITRPS\*
- MHSA-PEI\*
- TITLE IV-E\*
- CW\*
- GPS\*
- ADFLC

\*Also a funding source



## Substance Use Disorders (SUD) Service Providers

1. Mela Counseling Services Center  
1260 S. Monterey Pass Road Monterey Park, CA 91754
2. Plaza Community Center  
5255 Pomona Blvd, Suites 2 & 5, Los Angeles, CA 90022
3. California Hispanic Commission on Alcohol and Drug Abuse  
5331 Via San Delarrio, Los Angeles, CA 90022
4. Plaza Community Center  
5101 East 6th St., Los Angeles, CA 90022
5. Narcotic Prevention Association  
942 Atlantic Blvd. Suite 100, Los Angeles, CA 90022
6. Circle of Help Foundation  
1011 Goodrich Blvd., Los Angeles, CA 90022
7. Mela Counseling Services Center  
5721-5723 Whittier Blvd. Los Angeles, CA 90022
8. California Hispanic Commission on Alcohol and Drug Abuse  
3514 W. Beverly Blvd., Los Angeles, CA 90640
9. California Hispanic Commission on Alcohol and Drug Abuse  
5801 E. Beverly Blvd., Los Angeles, CA 90022
10. Mela Counseling Services Center  
231 S. Alma Ave., Los Angeles, CA 90022
11. Social Model Recovery Systems  
453 S. Indiana St., Los Angeles, CA 90063
12. VIP Drug and Alcohol Education Center  
1114 S. Lorena St., Rm 204 & 205, Los Angeles, CA 90023
13. Behavioral Health Services  
3421 E. Olympic Blvd. Los Angeles, CA 90023
14. The Salvation Army  
5600 Rickenbacker Road, City of Bell, CA 90201
15. Hannah's First Step Treatment Center  
5900 S. Eastern Ave., Suites 140 & 142, Commerce, CA 90040
16. Mela Counseling Services Center  
6119 Agra Street, Bell Gardens, CA 90201

## County of Los Angeles Department of Public Health Substance Abuse Prevention & Control

1000 S. Fremont Ave. Bldg A9 East, 3rd Fl.  
Alhambra, CA 91803

<http://publichealth.lacounty.gov/sapc/>

Note: Only SAPC DMC Treatment Providers are Listed  
Source: DHS facility list with Sup Dist and Cluster.xlsx  
NAD 1983 State Plane CA FIPS 0405 SAPC, 8/1/2013