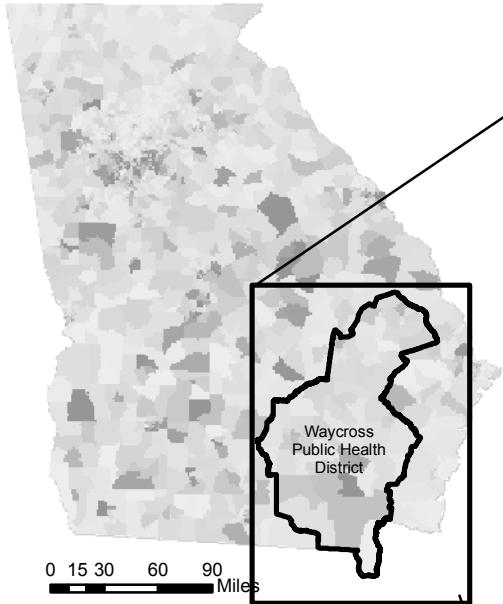


# Number of Individuals at Poverty Level\* Hospitalized due to Type II Diabetes (2009-2013), by Census Tract, and Health Care Services\*\*

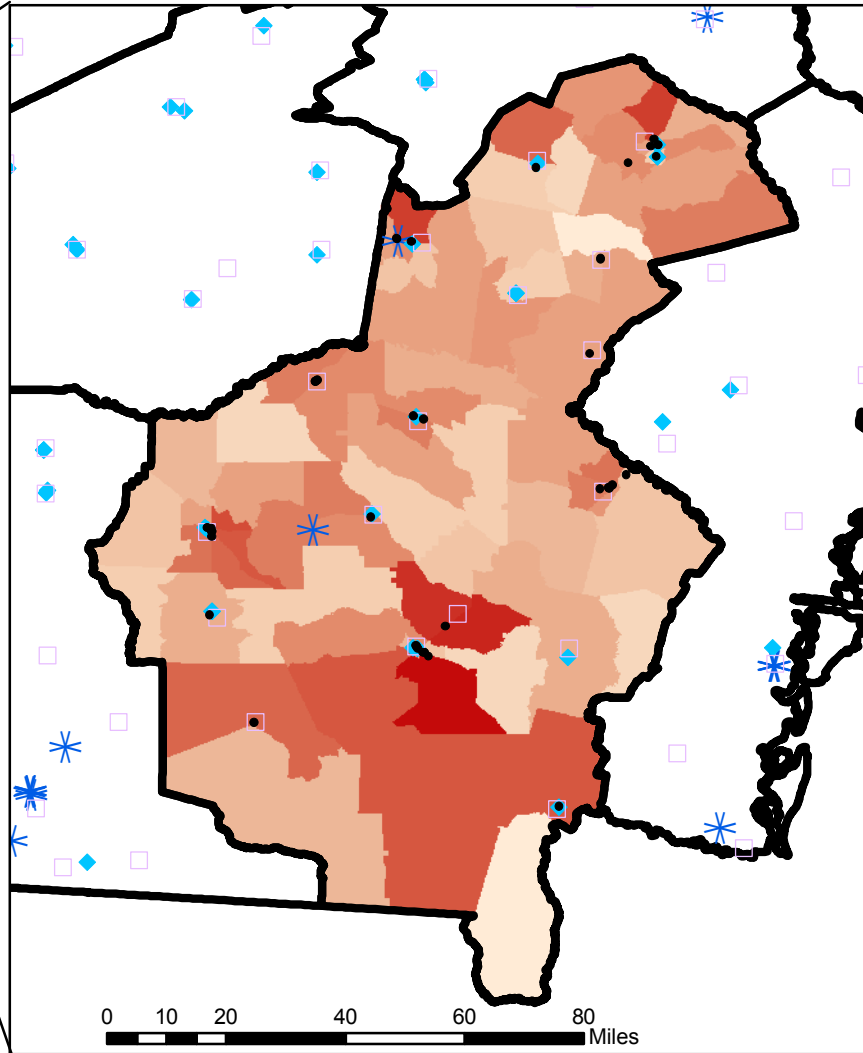
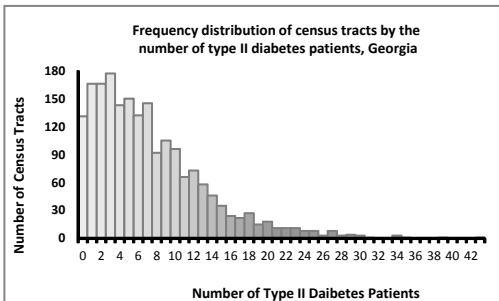


0 15 30 60 90 Miles

## Legend

### Diabetes Hospitalizations

Value  
High : 43  
Low : 0



## Legend

- Pharmacy
- Public Health Clinic
- ◆ FQHC
- ✱ DSME Site

### Diabetes Hospitalizations

Value  
High : 21  
Low : 0

\*Poverty level includes individuals who used Medicaid, Self-pay, PeachCare, or Other ( not including workers compensation) as payment source

\*\*Health Care Services Include: Pharmacies, Diabetes Self-Management Sites (DSME), Federally Qualified Health Centers (FQHC), and Public Health Clinics

