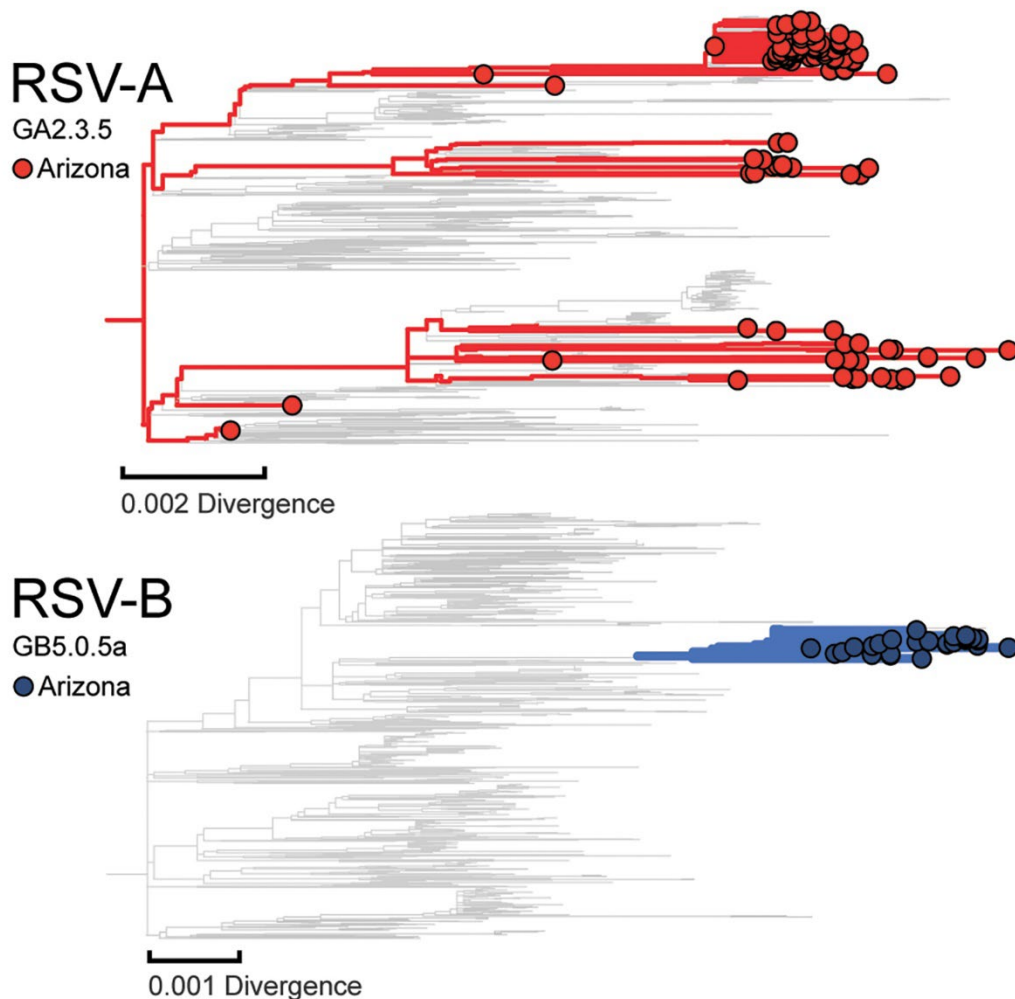
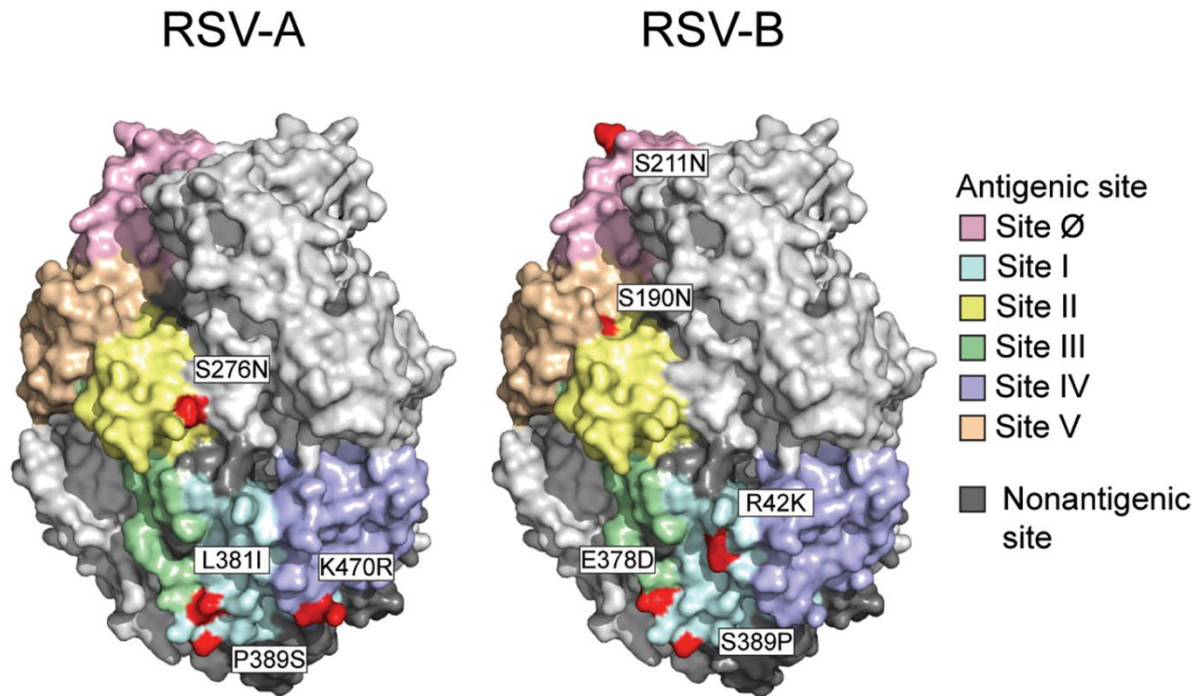


Genomic Sequencing Surveillance to Identify Respiratory Syncytial Virus Mutations, Arizona, USA

Appendix



Appendix Figure 1. Phylogeny of RSV-A GA2.3.5 (top) and RSV-B GB5.0.5a clades (bottom) of respiratory syncytial virus (RSV) in Arizona, USA, 2022–2023. Nodes and colored branches highlight sequences from Arizona.



Appendix Figure 2. Structure of RSV prefusion F protein with surface exposed RSV-A (left) and RSV-B (right) single nucleotide polymorphisms found in Arizona sequences labeled and highlighted in bold red. One protomer of each trimer model is colored by antigenic site, 2 additional protomers shown in white.