



Mpox

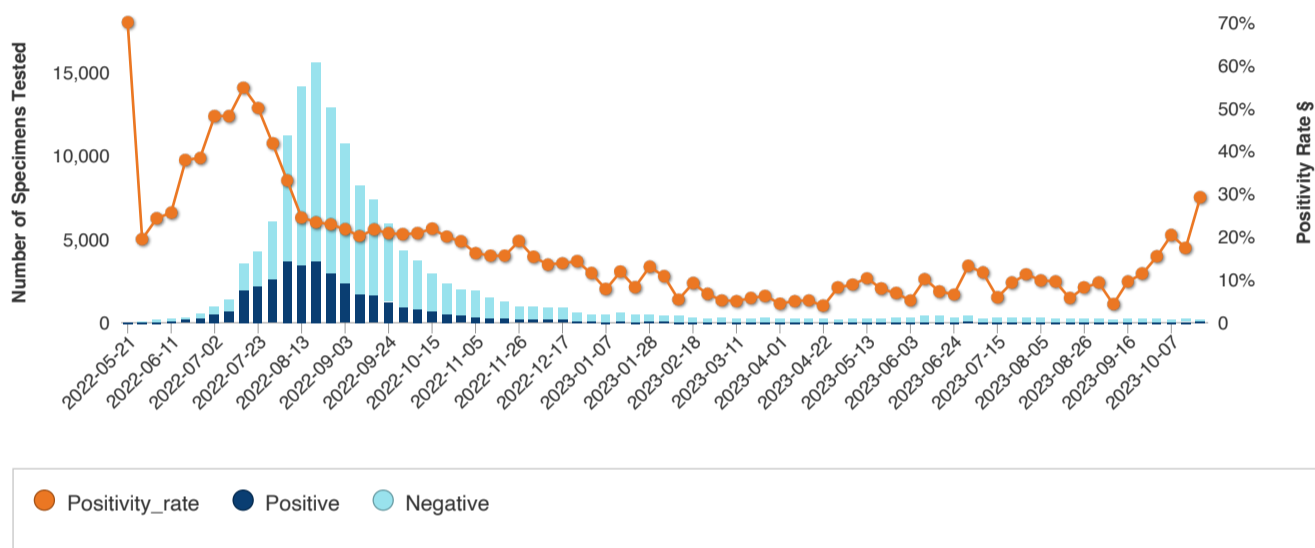
Non-Variola Orthopoxvirus and Mpox Virus Laboratory Testing Data

Data as of October 26 2023 at 2:00 pm EDT

As of October 26 2, laboratory testing data from one commercial laboratory for the period 7-16-2022 through 9-25-2022 have been updated, and data subsequent to 9-25-2022 have been added. The number of tests and test positivity rates reported may differ from previously published results.

Total Specimens Tested	Cumulative Positivity Rate
150,740	24.5%

Non-variola orthopoxvirus/mpox testing from public health and select commercial laboratories †



[Download Data \(CSV\)](#)

Data Table	2022-05-21	2022-05-28	Total #	2022-06-11	2022-06-18	2022-06-25	2022-07-
Negative	3	70	109	208	215	355	507
Positive	7	17	35	72	131	222	471
Positivity_rate	70%	20%	24%	26%	38%	39%	48%

Footnotes

† Data from Laboratory Response Network laboratories and 4 commercial laboratories using the CDC non-variola orthopoxvirus assay, and one commercial laboratory using a non-variola orthopoxvirus and mpox multiplex assay.

§ Positivity rate based on specimens tested, not patients. Most patients have multiple specimens tested. Positivity rate is calculated as (number of positive specimens)/(number of positive + negative specimens) per week. Results that are equivocal or inconclusive are not included. Changes in the week-to-week positivity rates may be related to sample size. Estimates derived from small sample sizes should be interpreted with caution.

Total includes all test results: equivocal, inconclusive, negative, positive.

Line-listed data replaced aggregate data for one commercial laboratory beginning with the week ending 7-16-2022. This resulted in updates to the number of specimens tested and positivity rates during these weeks.