

PUBLIC HEALTH INFRASTRUCTURE CENTER

CDC's National Center for State, Tribal, Local, and Territorial Public Health Infrastructure and Workforce provides effective and efficient delivery of public health infrastructure and workforce development services.

MISSION

To improve public health outcomes by strengthening the public health infrastructure and workforce of the United States

VISION

A U.S. public health system that delivers high-quality and equitable services to all communities

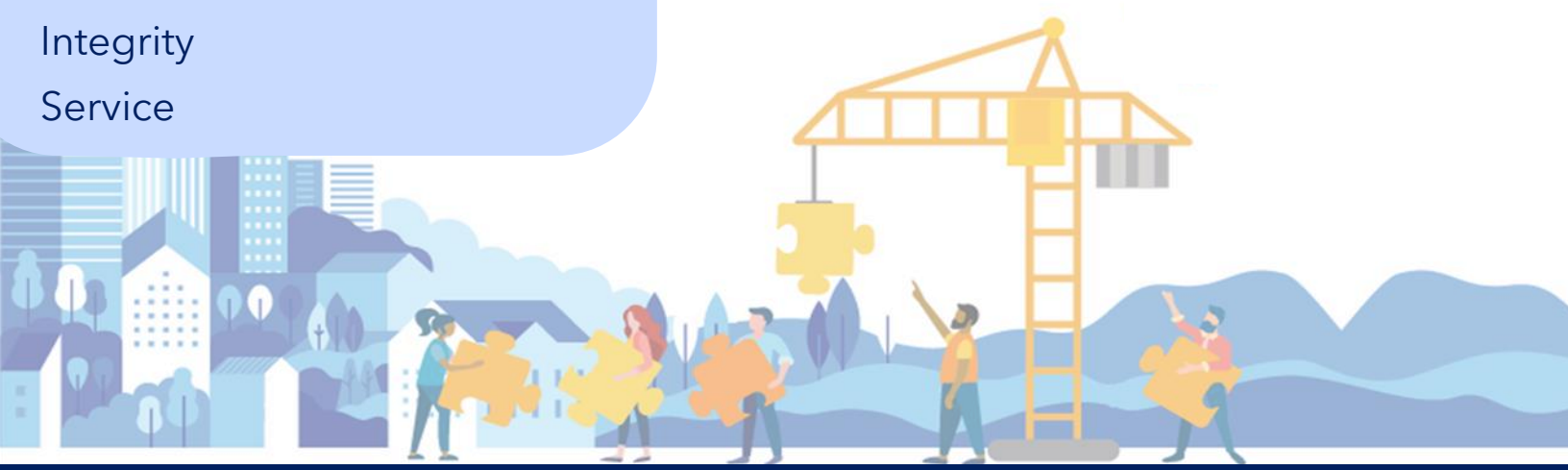
VALUES

Diversity, Equity, Inclusion,
Accessibility & Belonging
Collaboration
Integrity
Service

What Is Public Health Infrastructure?

Public Health Infrastructure is made up of the **people, services, and systems** needed to promote and protect health in every U.S. community.

The Public Health Infrastructure Center is committed to ensuring that *every community* enjoys the benefits and protections of effective public health services.



FUNCTIONS & DIVISIONS

Jurisdictional & Tribal Support



The **Division of Jurisdictional Support** coordinates CDC funding, strategy, and technical assistance to jurisdictions and Tribes through an approach grounded in customer service, trust, equity, and continual improvement.

Public Health Infrastructure Grant

Preventive Health and Health Services Block Grant Program

Strengthening Public Health Systems and Services in Indian Country

COVID Health Equity and Tribal COVID Grants

Partnerships & Technical Assistance



The **Division of Partnership Support** leverages partnerships to sustain and strengthen public health system capacity through technical assistance aimed at improving public health performance.

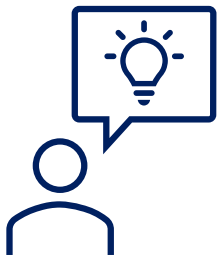
National Partner Umbrella Cooperative Agreement

Partner Capacity Building through Grants & Cooperative Agreements

Office of Public Health Law Services

Office of Island Affairs

Workforce Development



The **Division of Workforce Development** provides national leadership for recruiting, training, developing, retaining, and diversifying the public health workforce.

Fellowships, including the Epidemic Intelligence Service and Public Health Associate Program

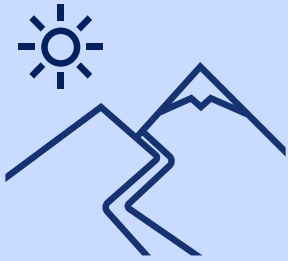
Public Health Workforce Research

Public Health AmeriCorps

Education and Training

REACHING EVERY COMMUNITY

CDC's Public Health Infrastructure Center aims to strengthen public health services in every community.



Tribes and Tribal Communities

The **Office of Tribal Affairs and Strategic Alliances** serves as CDC's lead liaison for American Indian and Alaska Native public health issues. The Office coordinates CDC's government-to-government relationships with tribes and provides expertise to CDC programs working in Indian Country.



Rural Communities

The **Office of Rural Health** leads the agency's work to improve health in America's rural communities by advancing a CDC rural public health strategy and integrating rural health approaches and science in CDC's major programs.



Territories and Freely Associated States

The **Office of Island Affairs** collaborates with federal and non-federal partners, CDC programs, and health officials to strengthen public health systems for U.S. territories and freely associated states.



3,000+ Health Departments

The **Office of Recipient Support and Coordination** assists thousands of state, local, territorial, and freely associated state health departments. The office leads coordination and executive-level engagement, providing a vital link between CDC and leadership on the frontlines of public health.

OUR APPROACH



An Enterprise Approach, Centered In Service

The Public Health Infrastructure Center is committed to a new way of doing business with jurisdictions, tribes, and partners.



Customer Service

The center advances new ways of serving jurisdictions and tribes to reduce administrative burden; strengthen peer-to-peer technical assistance; advance diversity, equity, inclusion, and accessibility; and further our shared public health missions.



Evaluation and Performance Management

Evaluation and assessment is baked into the center's work and programs, helping illuminate what works and how to continually improve CDC programs.



Partnerships

The center promotes results-based partnerships by leveraging partners to support jurisdictions, improving service to funded partners, and reducing barriers to partnering with CDC.



Working Across the Agency

Enterprise problems require enterprise solutions. The center collaborates across CDC programs to advance a cohesive, efficient strategy and approach to supporting jurisdictions, tribes, and partners.

Public Health Infrastructure Grant

The Public Health Infrastructure Grant embodies the center's new approach by trusting jurisdictions to define their own needs and priorities; integrating evaluation into every part of the program; leveraging partners to support health departments; and advancing an enterprise-wide approach to the program.

\$3.8B

Total funding

\$155M

To three national partners: ASTHO, NNPHI, and PHAB

107

State, local, territorial, and freely associated jurisdictions across the United States

Find out more: bit.ly/CDCInfrastructure