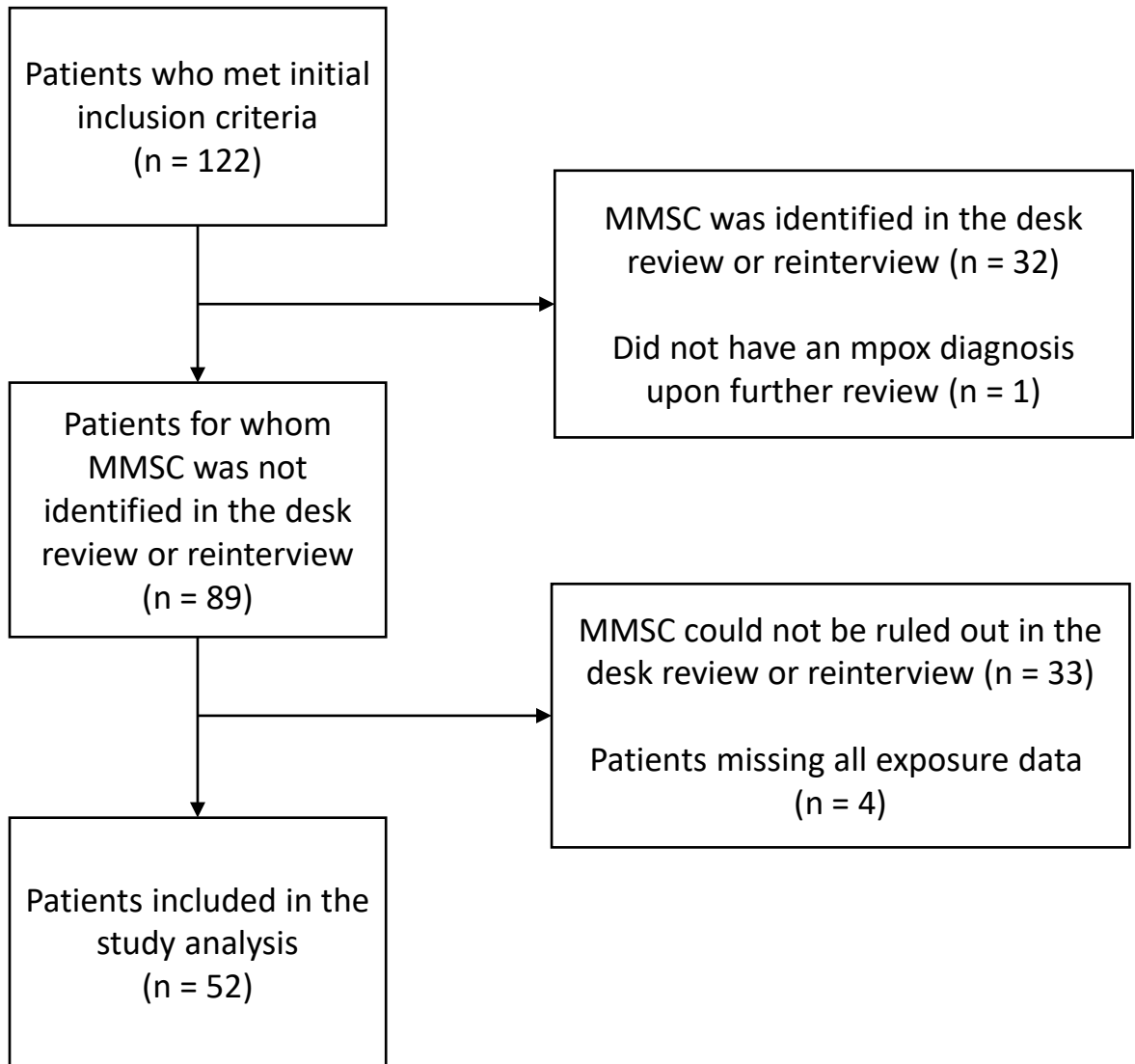


SUPPLEMENTARY FIGURE. Flow chart showing exclusion criteria for mpox patients aged ≥ 18 years who did not initially report male-to-male sexual contact (MMSC) — United States,* November 1–December 14, 2022



* Six state and city jurisdictional health departments included California (excluding Los Angeles County), Georgia, Louisiana, New York City, Pennsylvania (excluding Philadelphia), and Philadelphia