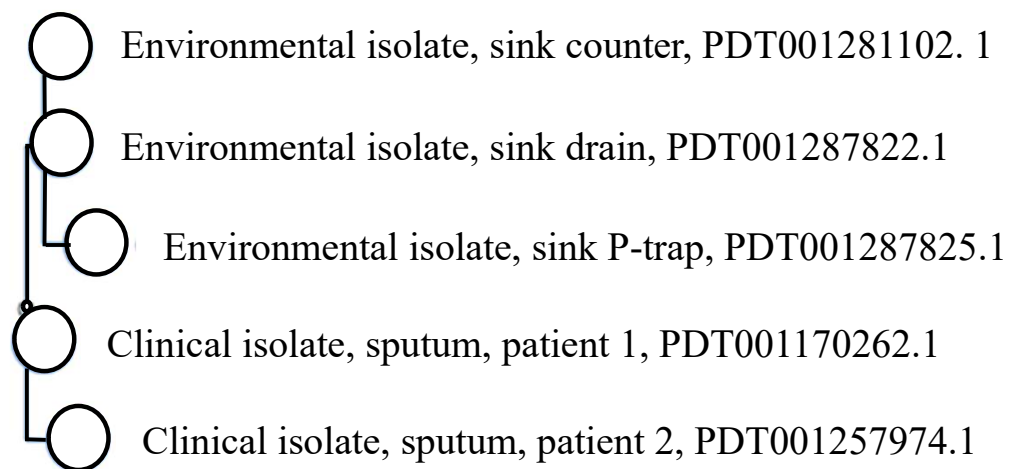


**SUPPLEMENTARY FIGURE. Phylogenetic tree of cluster PDS000105853.3\*, consisting of clinical isolates from two patients and hospital environmental isolates\*\* of IMP-producing *Pseudomonas aeruginosa*\*\*\* — Idaho, 2021–2022.**



\* All isolates were uploaded to BioProject PRJNA288601 and analyzed via Pathogen Detection. Pathogen Detection clustered all isolates into cluster PDS000105853.3 and did not include any other isolates as of May 23, 2023 ([https://www.ncbi.nlm.nih.gov/pathogens/tree/#Pseudomonas\\_aeruginosa/PDG000000036.853/PDS000105853.3](https://www.ncbi.nlm.nih.gov/pathogens/tree/#Pseudomonas_aeruginosa/PDG000000036.853/PDS000105853.3)). As of May 23, 2023, Pathogen Detection included 26,520 *Pseudomonas aeruginosa* isolates.

\*\* Clinical isolates from patient 1 and patient 2 are from sputum specimens collected while patients were being treated in intensive care unit (ICU) room X of hospital A. Environmental isolates are from one sink in the ICU room X of hospital A.

\*\*\* active-on-imipenem (IMP) metallo-beta-lactamase-producing *Pseudomonas aeruginosa*