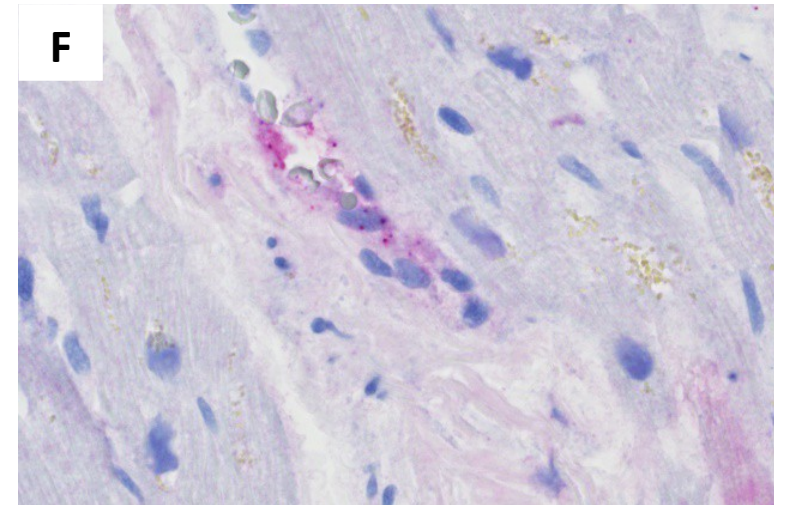
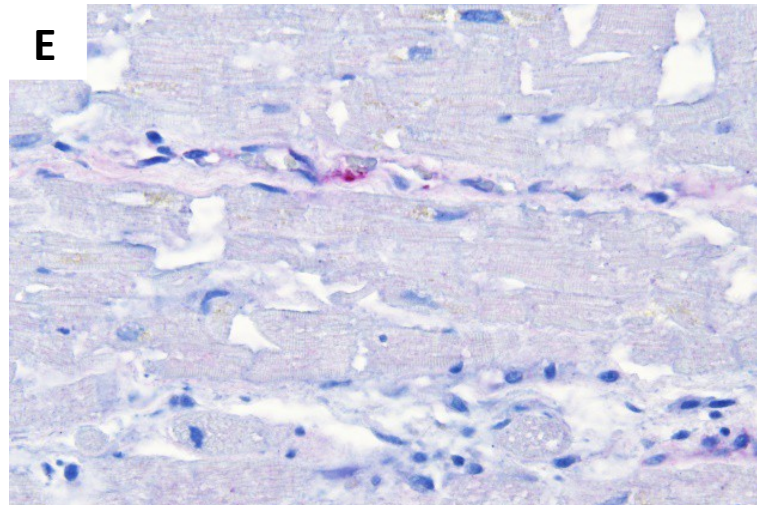
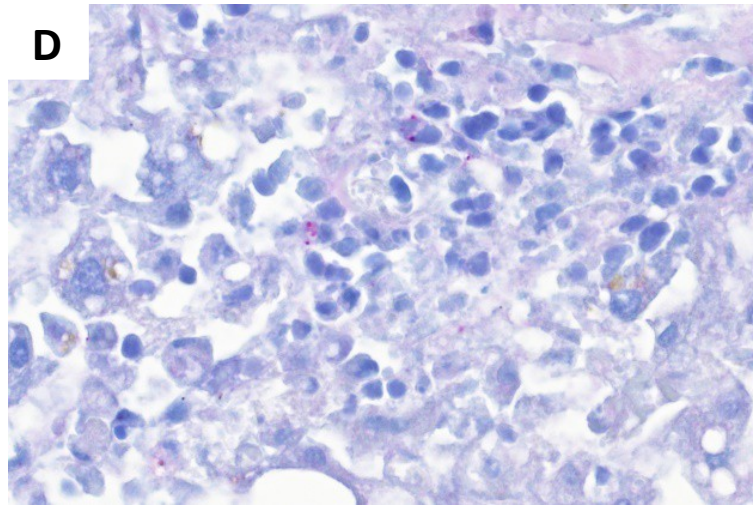
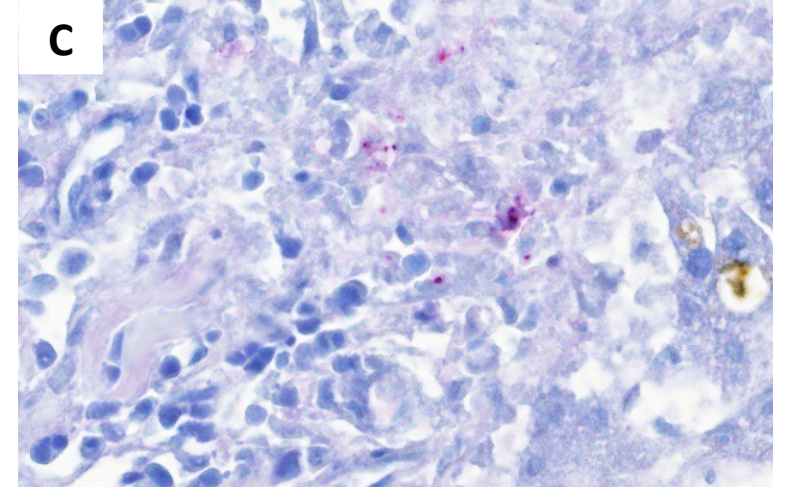
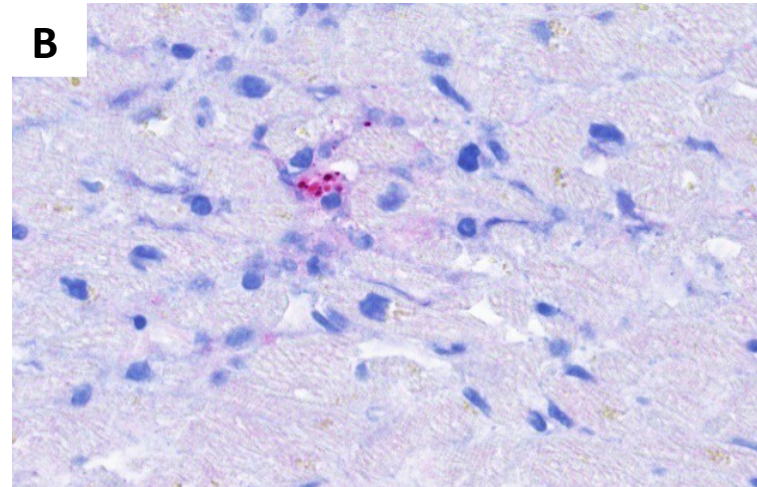
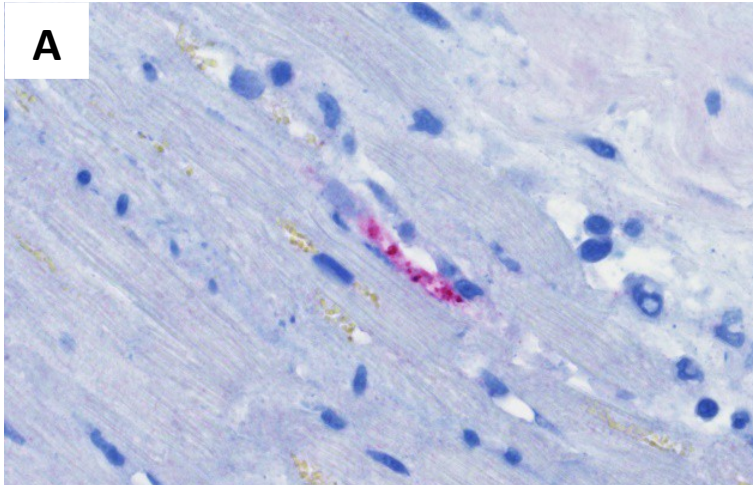


SUPPLEMENTARY FIGURE. Histologic evidence of rickettsial antigens* in heart (A–D) and liver (E, F) biopsy specimens in a patient with fatal fleaborne typhus — Los Angeles County, California, 2022



* Multifocal staining of rickettsial antigens in endothelial cells in small blood vessels of the heart (panels A–D) and less frequently in endothelial cells lining the sinusoidal spaces of the liver (panels E and F)