

COVID Data Tracker

Maps, charts, and data provided by CDC, updates Mondays and Thursdays by 8 p.m. ET

[COVID-19 Home >](#)

United States

At a Glance

Total Hospitalizations
6,209,122

Trend in Hospital Admissions
-0.9% in most recent week

Total Deaths
1,135,364

Trend in % COVID-19 Deaths
No change in most recent week

Vaccinations

Total Updated (Bivalent) Vaccine
Doses Distributed
144,182,870

Data Tracker Home

Trends

Maps

Hospitalizations

Deaths

Emergency Department
Visits

Vaccination Distribution &
Coverage

Vaccine Effectiveness

Variants & Genomic
Surveillance

Traveler-Based Genomic
Surveillance

Wastewater Surveillance

Post-COVID Conditions

Health Equity

Pediatric

Pregnancy

Seroprevalence

Social Impact

Other COVID-19 Data

Communications Resources

COVID-19 Home

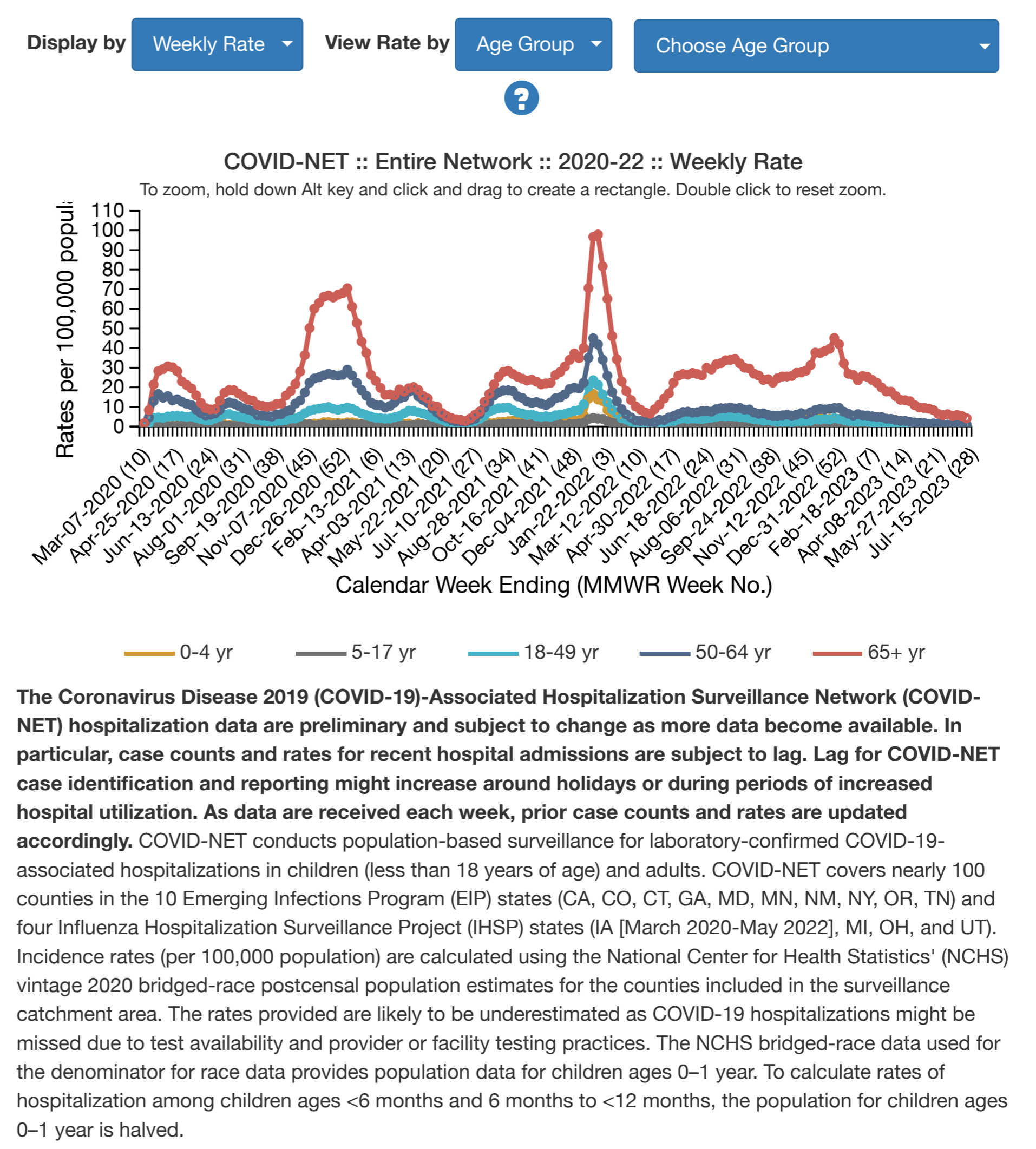
[< Back to Hospitalizations](#)

COVID-NET Laboratory-confirmed COVID-19 hospitalizations

COVID-NET is a population-based surveillance system that collects data on laboratory-confirmed COVID-19-associated hospitalizations among children and adults. The current network is comprised of over 300 acute-care hospitals in 13 states. Hospitalization rates are updated weekly. COVID-NET also provides important clinical information on COVID-19-associated hospitalizations, including age group, sex, race/ethnicity, and underlying health conditions.

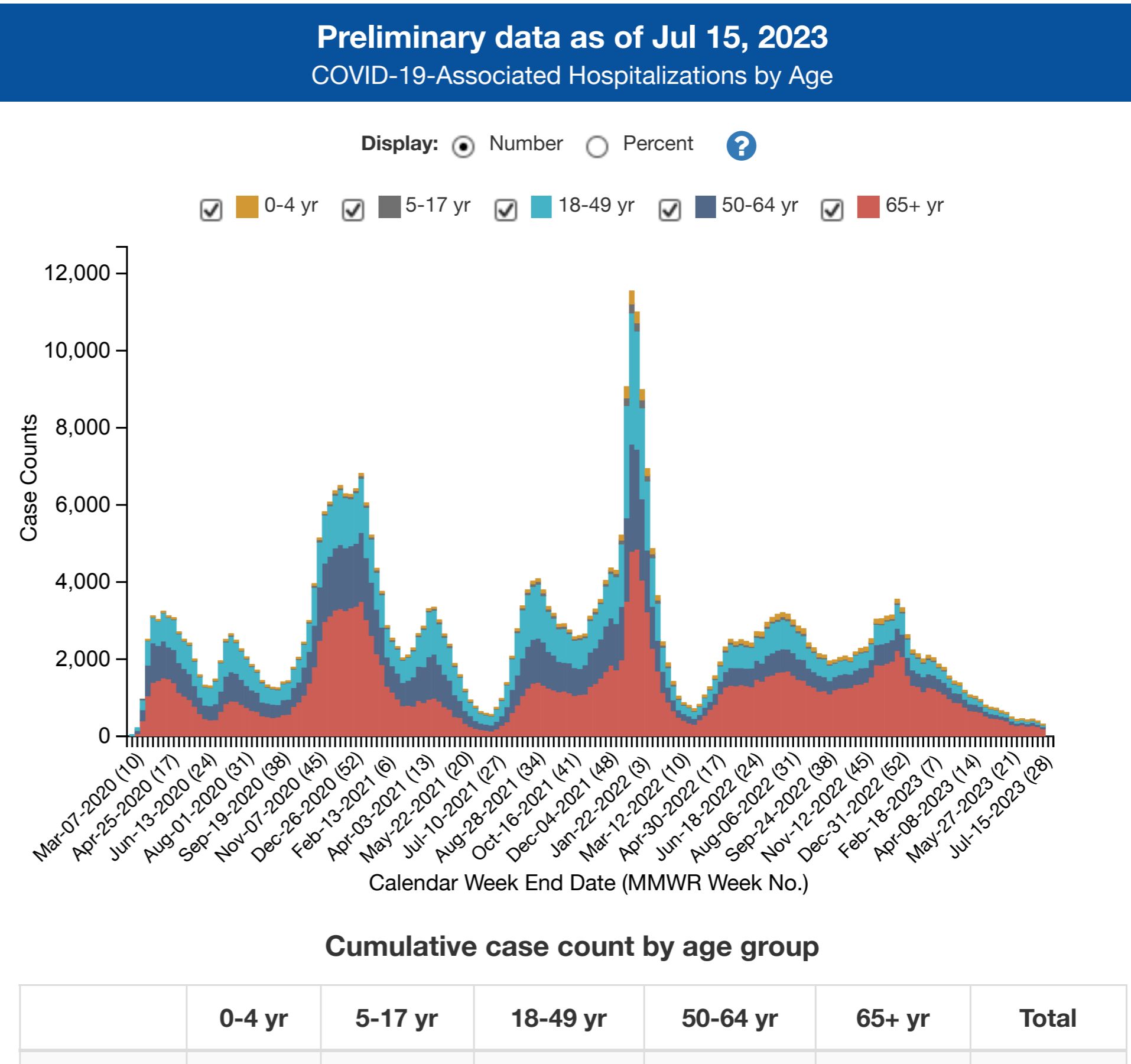
For more information about COVID-NET, please see

<https://www.cdc.gov/coronavirus/2019-ncov/covid-data/covid-net/purpose-methods.html>



Starting MMWR week 22 of 2022, IA data are removed from weekly rate calculations.

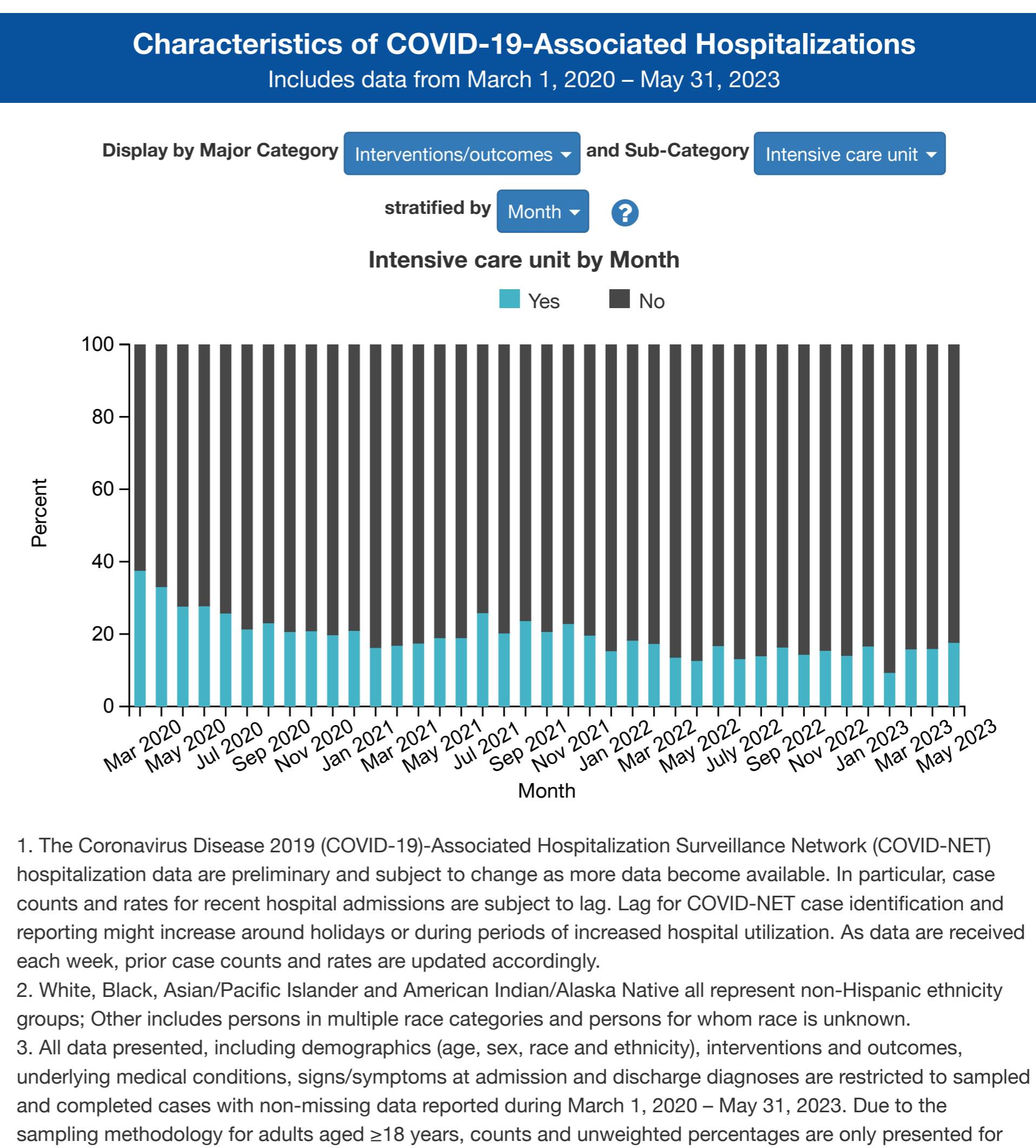
[View Complete Application](#) | [Download Data](#) | [Download Image](#)



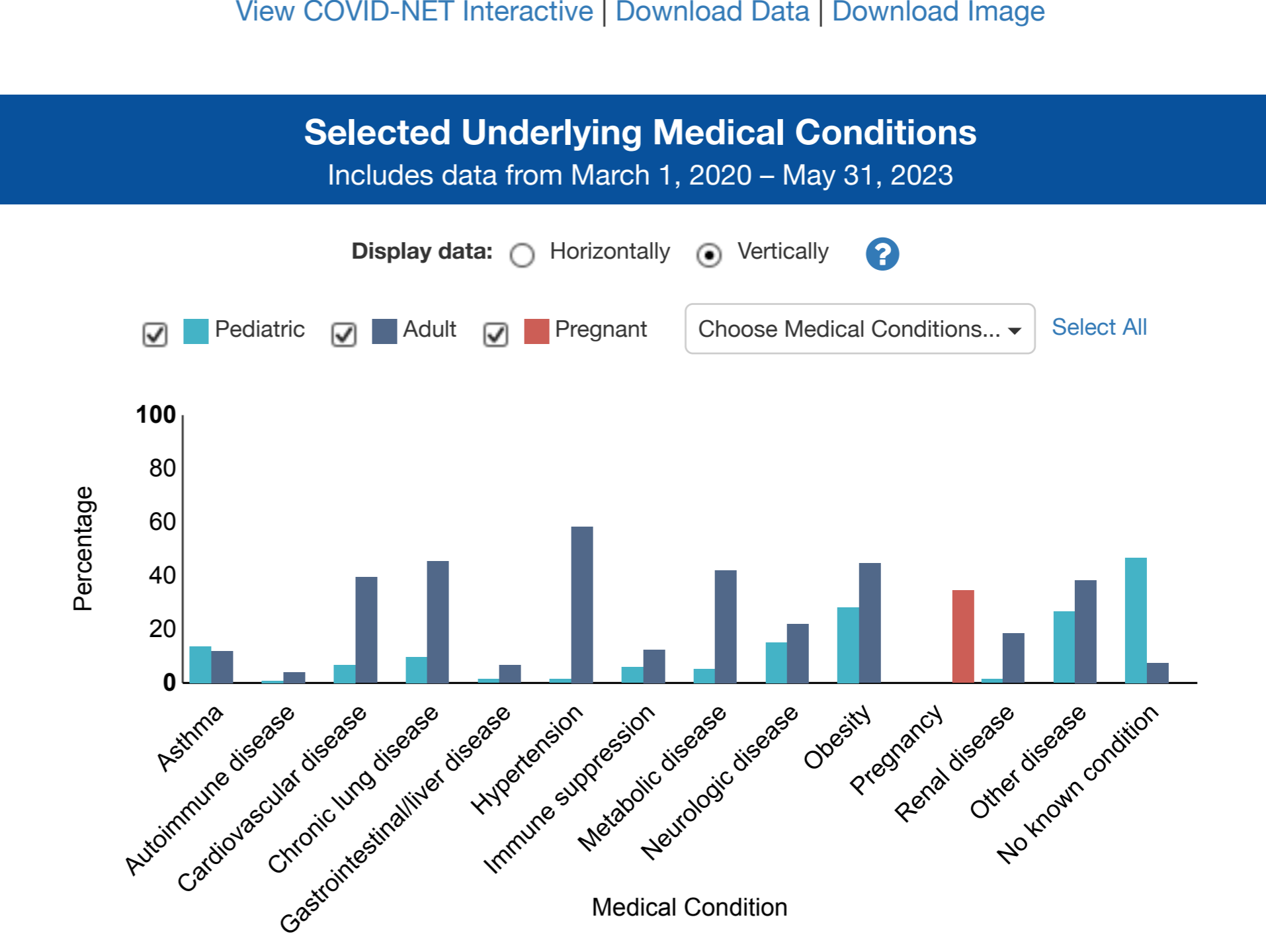
The Coronavirus Disease 2019 (COVID-19)-Associated Hospitalization Surveillance Network (COVID-NET) hospitalization data are preliminary and subject to change as more data become available. In particular, case counts and rates for recent hospital admissions are subject to lag. Lag for COVID-NET case identification and reporting might increase around holidays or during periods of increased hospital utilization. As data are received each week, prior case counts and rates are updated accordingly.

[View COVID-NET Interactive](#) | [Download Data](#) | [Download Image](#)

Additional data on disease severity among hospitalized COVID-19 patients from other sources are available [here](#).



[View COVID-NET Interactive](#) | [Download Data](#) | [Download Image](#)



[View COVID-NET Interactive](#) | [Download Data](#) | [Download Image](#)

Cite COVID Data Tracker

Centers for Disease Control and Prevention. COVID Data Tracker. Atlanta, GA: U.S. Department of Health and Human Services, CDC; 2023, July 22. <https://covid.cdc.gov/covid-data-tracker>

COVID-19 Home >

All COVID-19 topics including prevention, travel, work, and school

HAVE QUESTIONS?

- Visit CDC-INFO
- Call 800-232-4636
- Email CDC-INFO
- Open 24/7

CDC INFORMATION

- About CDC
- Jobs
- Funding
- Policies
- File Viewers & Players

Privacy

- FOIA
- No Fear Act
- OIG
- Nondiscrimination
- Accessibility

CONNECT WITH CDC

-
-