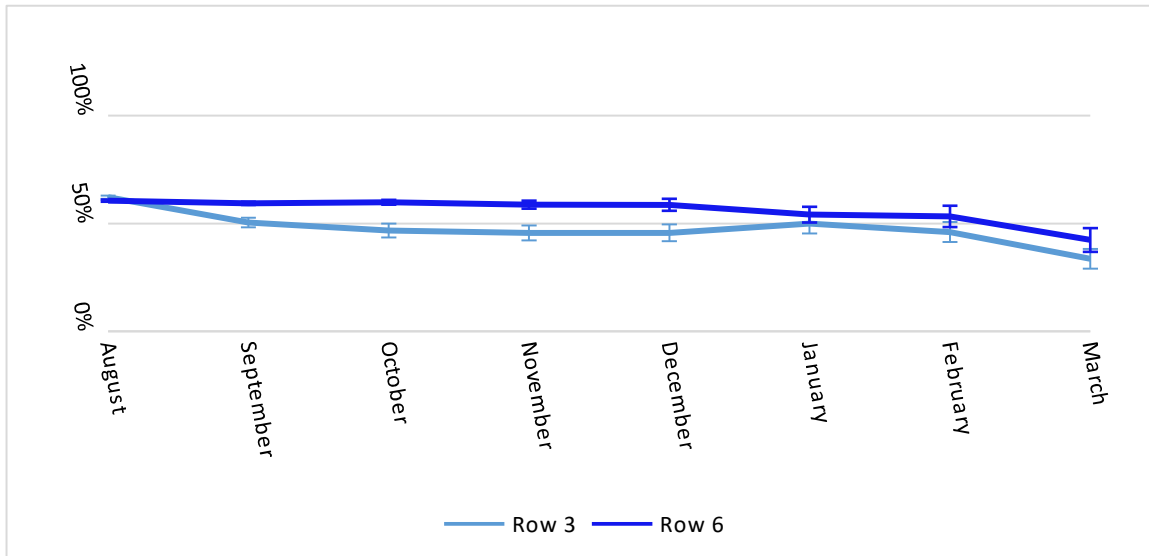


	August	September	October	November	December	January	February	March
SC First Dose								
Total	62.2%	50.5%	46.7%	45.6%	45.6%	50.0%	46.1%	33.7%
MOE	0.7%	2.2%	3.2%	3.4%	3.9%	4.6%	4.6%	4.6%
ID First Dose								
Total	60.6%	59.4%	59.9%	58.7%	58.6%	54.1%	53.3%	42.4%
MOE	0.5%	0.7%	1.2%	1.8%	2.8%	3.6%	4.9%	5.5%



Abbreviations: ID = intradermal; SC = subcutaneous

*The proportion of all persons in any given month who completed the vaccine series at least 24 days after their first dose

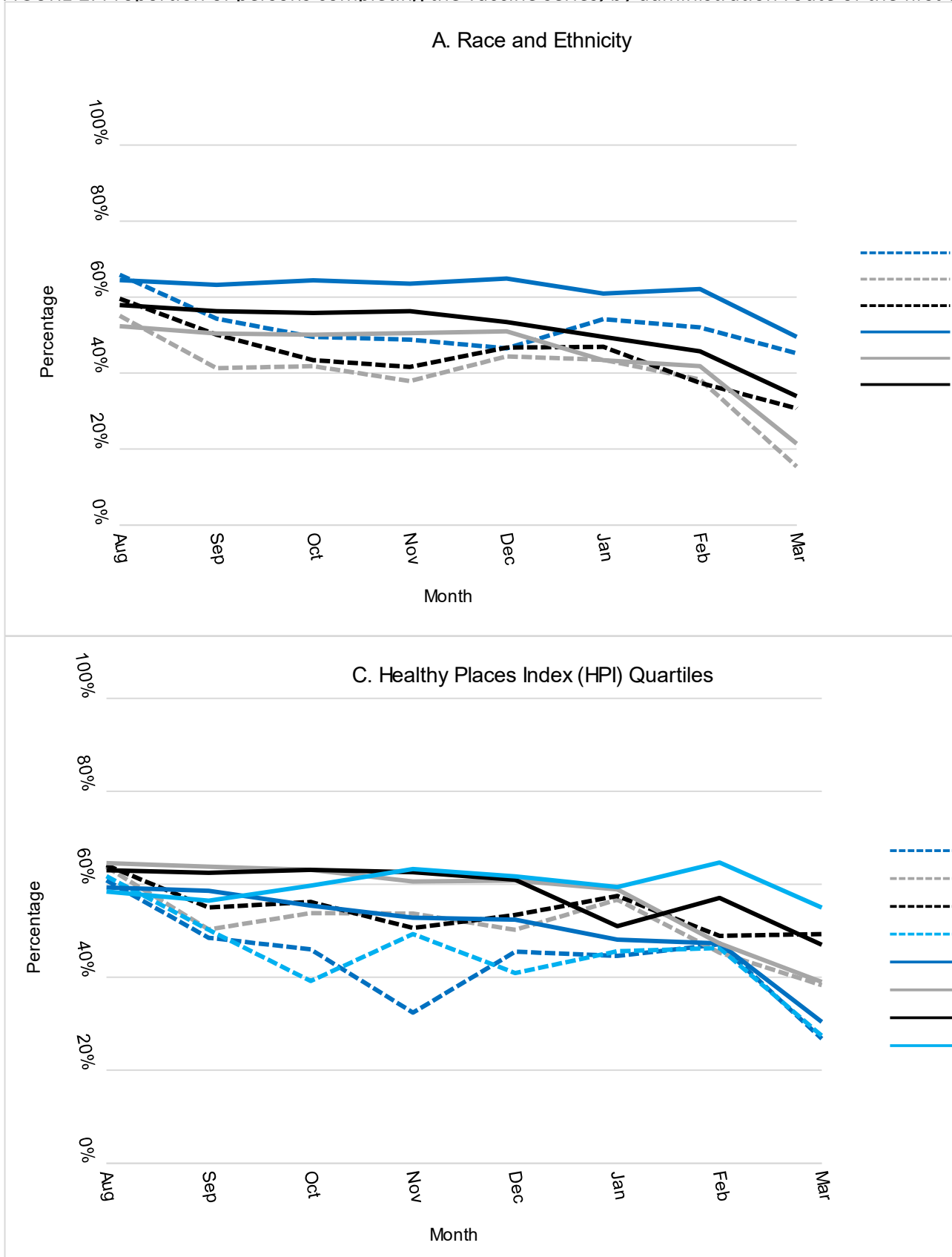
†August includes August 9-31, 2022 when both ID and SC administration was authorized. August 1-8, 2022 was excluded

use and no later than March 31, 2023, stratified by the route of administration of the first dose. For example, 51% and 5
ed.

59% of persons whose first dose was administered by SC and ID administration, respectively, in September 2022 compli

eted the vaccine series at some point in the futu

FIGURE 2. Proportion of persons completing the vaccine series, by administration route of the first c



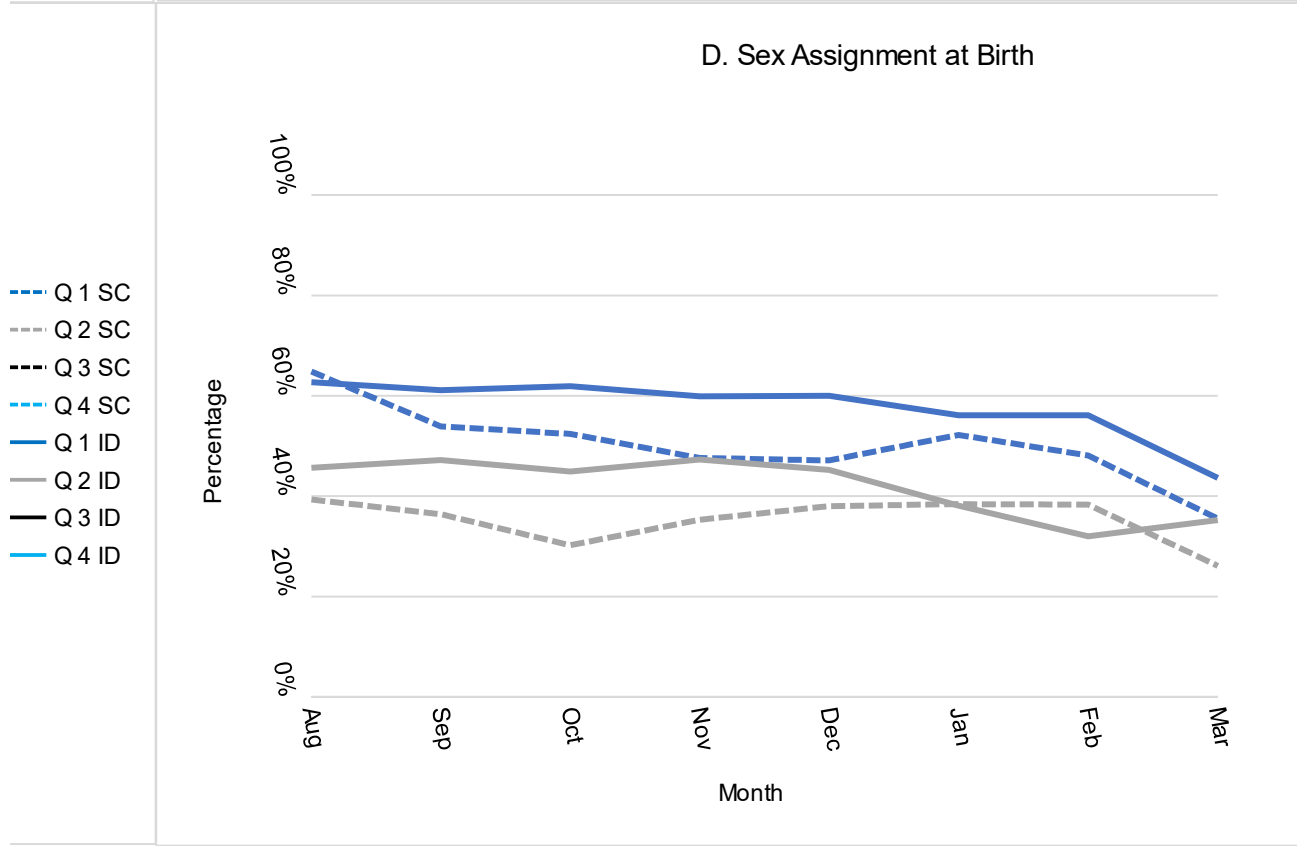
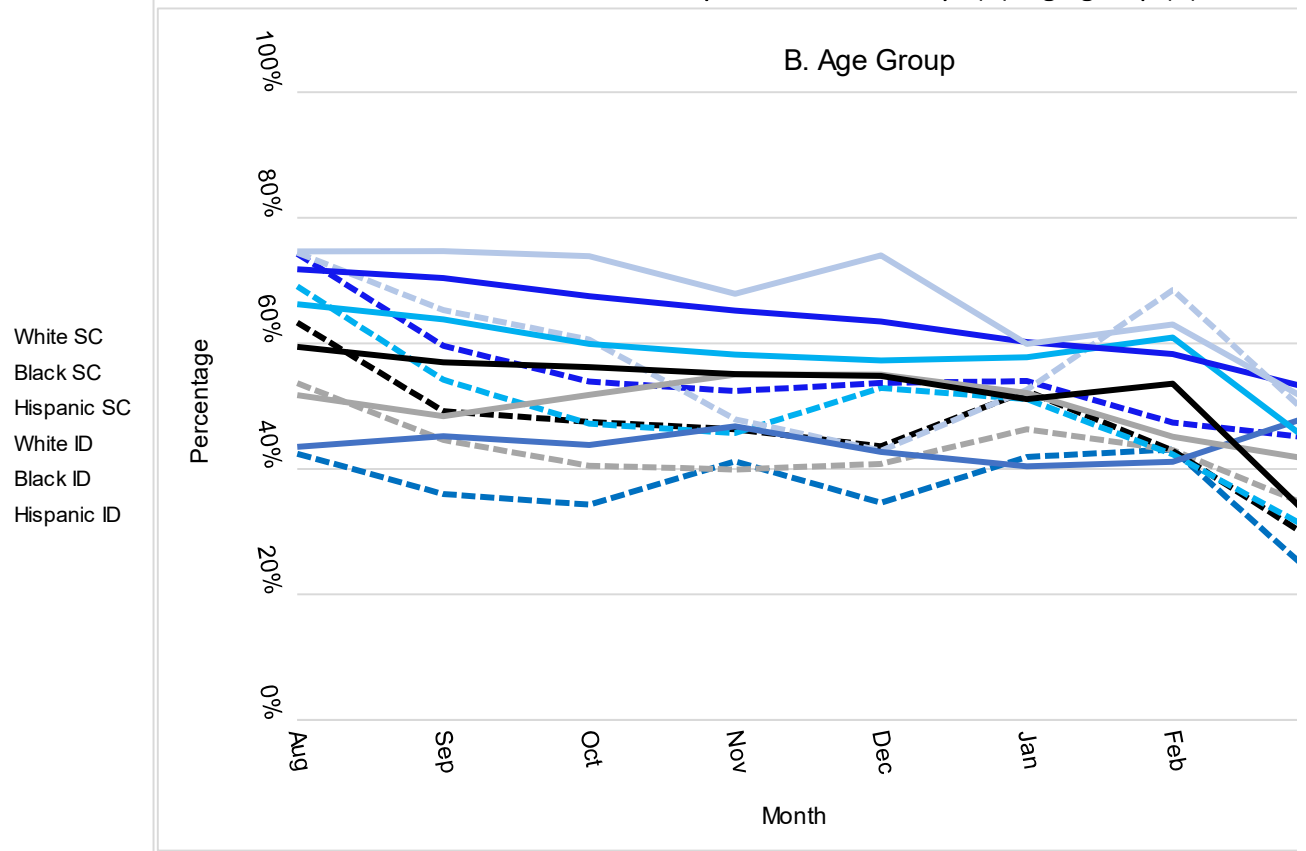
Abbreviations: ID = intradermal; SC = subcutaneous; Q = quartile

* The proportion of all persons in any given month who completed the vaccine series at least 24 days after their first d

† Hispanic persons could be of any race; other race groups are non-Hispanic.

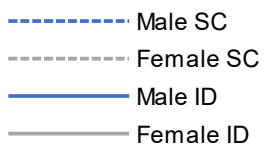
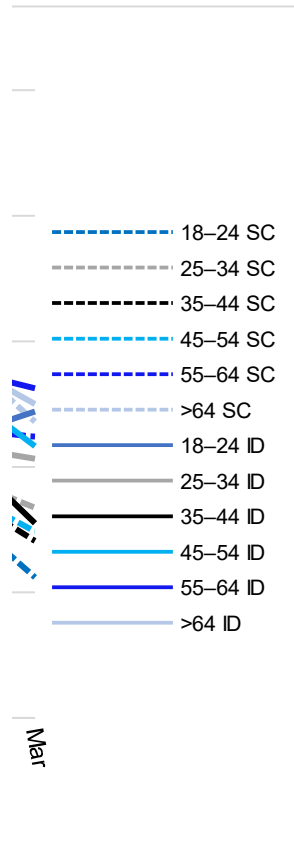
§ August includes August 9-31, 2022 when both ID and SC administration was authorized. August 1-8, 2022 was exclud

dose* and month of administration of the first dose, by race and ethnicity† (A), age group (B), Health



ose and no later than March 31, 2023, broken down by the route of administration of the first dose. For example, 61% of
ed.

ity Places Index quartile (C), and sex assigned at birth (D) — California, August 2022–March 2023⁵



of persons with male sex assignment at birth, whose first dose was administered intradermally in September 2022, con

Completed the vaccine series at some point in the future.

Variable	Legend	Aug	Sep	Oct	Nov	Dec	Jan
White	SC	66%	54%	50%	49%	47%	54%
Black	SC	55%	41%	42%	38%	44%	44%
Asian	SC	63%	55%	46%	53%	49%	54%
Other or Multiracial	SC	58%	43%	50%	45%	37%	47%
Hispanic	SC	60%	50%	43%	42%	47%	47%
White	ID	64%	63%	64%	64%	65%	61%
Black	ID	52%	50%	50%	51%	51%	43%
Asian	ID	61%	61%	65%	62%	61%	55%
Other or Multiracial	ID	55%	53%	51%	49%	53%	48%
Hispanic	ID	58%	56%	56%	56%	53%	50%

Feb	Mar
52%	45%
38%	15%
68%	43%
41%	22%
37%	31%
62%	50%
42%	21%
55%	65%
52%	41%
46%	34%

Variable	Legend	Aug	Sep	Oct	Nov	Dec	Jan	Feb
18–24	SC	42%	36%	34%	41%	35%	42%	43%
25–34	SC	54%	45%	41%	40%	41%	46%	43%
35–44	SC	63%	49%	48%	46%	44%	52%	43%
45–54	SC	69%	54%	47%	46%	53%	51%	42%
55–64	SC	74%	60%	54%	52%	54%	54%	47%
>64	SC	74%	65%	61%	48%	43%	53%	69%
18–24	ID	44%	45%	44%	47%	43%	40%	41%
25–34	ID	52%	48%	52%	55%	55%	52%	45%
35–44	ID	59%	57%	56%	55%	55%	51%	54%
45–54	ID	66%	64%	60%	58%	57%	58%	61%
55–64	ID	72%	70%	68%	65%	64%	60%	58%
>64	ID	75%	75%	74%	68%	74%	60%	63%

Mar
22%
34%
28%
30%
45%
47%
49%
41%
31%
43%
53%
50%

Variable	Legend	Aug	Sep	Oct	Nov	Dec	Jan	Feb
Q 1	SC	61%	49%	46%	32%	46%	45%	47%
Q 2	SC	64%	50%	54%	54%	50%	57%	45%
Q 3	SC	64%	55%	56%	51%	53%	58%	49%
Q 4	SC	62%	50%	39%	49%	41%	46%	46%
Q 1	ID	59%	59%	55%	53%	52%	48%	47%
Q 2	ID	65%	64%	63%	61%	61%	59%	47%
Q 3	ID	63%	63%	63%	63%	61%	51%	57%
Q 4	ID	58%	57%	60%	63%	62%	59%	65%

Mar
27%
38%
49%
27%
30%
39%
47%
55%

Variable	Legend	Aug	Sep	Oct	Nov	Dec	Jan	Feb
Male	SC	65%	54%	52%	48%	47%	52%	48%
Female	SC	39%	36%	30%	35%	38%	38%	38%
Male	ID	63%	61%	62%	60%	60%	56%	56%
Female	ID	46%	47%	45%	47%	45%	38%	32%

Mar
36%
26%
44%
35%

August

First Dose Administered Subcutaneously

Total	0.622416
Male	0.648389
Female	0.393357
White, Non	0.65868
Black, Non	0.550749
Asian, Non	0.625675
Other or N	0.579453
Hispanic	0.595853
18-24	0.424115
25-34	0.536428
35-44	0.632945
45-54	0.690883
55-64	0.742806
>64	0.744428
Quartile 1	0.608475
Quartile 2	0.637525
Quartile 3	0.641201
Quartile 4	0.617473

First Dose Administered Intradermally

Total	0.606061
Male	0.627159
Female	0.456435
White, Non	0.644454
Black, Non	0.523168
Asian, Non	0.607662
Other or N	0.554465
Hispanic	0.578893
18-24	0.435028
25-34	0.517577
35-44	0.594232
45-54	0.662368
55-64	0.718258
>64	0.746432
Quartile 1	0.593298
Quartile 2	0.6457
Quartile 3	0.630189
Quartile 4	0.584495