



Measles (Rubeola)

Measles Cases and Outbreaks

CDC updates this page monthly.

Measles cases in 2023

June 8, 2023, a total of 16 measles cases were reported by 11 jurisdictions. *

Measles cases in 2022

From January 1 to December 31, 2022, a total of 121 measles cases were reported by 6 jurisdictions. *

Measles cases in 2021

From January 1 to December 31, 2021, a total of 49 measles cases were reported by 5 jurisdictions. *

Measles cases in 2020

From January 1 to December 31, 2020, 13 individual cases of measles were confirmed in 8 jurisdictions.*

*Jurisdictions refer to any of the 50 states, New York City, and the District of Columbia.

Measles cases in 2019

- From January 1 to December 31, 2019, 1,274* individual cases of measles were confirmed in 31 states.
- This is the greatest number of cases reported in the U.S. since 1992. The majority of cases were among people who were not vaccinated against measles. Measles is more likely to spread and cause outbreaks in U.S. communities where groups of people are unvaccinated.
- For more information please see the following reports:
 - [Increase in Measles Cases – United States, January 1-April 26, 2019](#) *MMWR*. May 3, 2019
 - [National Update on Measles Cases and Outbreaks – United States, January 1-October 1, 2019](#). *MMWR*. October 11, 2019

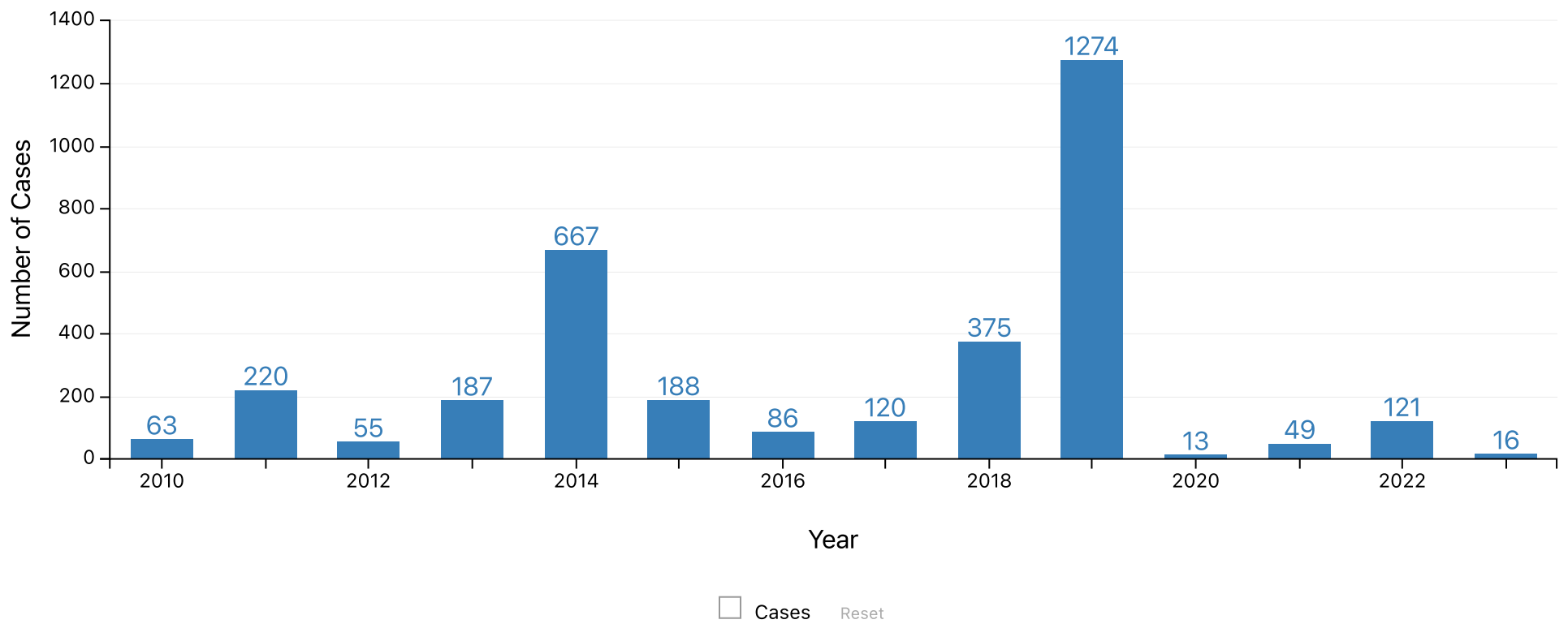
Number of measles cases reported by year

2010-2023* (as of June 8, 2023)



Did you know that measles can be found around the world?

[Global Measles Outbreaks](#)



Data Table

	2010	2011	2012	2013	2014	2015	2016	2017	2018	2019	2020	2021	2022	2023
Cases	63	220	55	187	667	188	86	120	375	1274	13	49	121	

Scroll for additional info

Download Table Data (csv)

*Case count is preliminary and subject to change.



Make sure you are vaccinated against measles before traveling internationally.

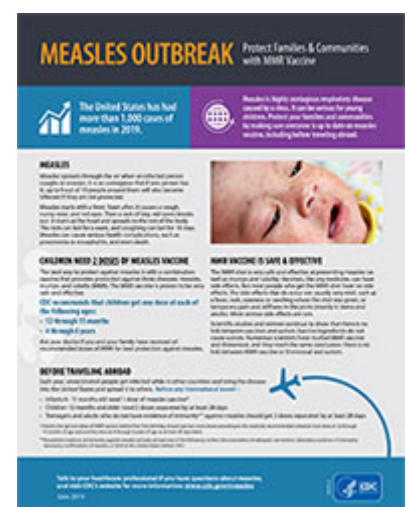
Measles outbreaks

In a given year, more measles cases can occur for any of the following reasons:

- an increase in the number of travelers who get measles abroad and bring it into the U.S., and/or
- further spread of measles in U.S. communities with pockets of unvaccinated people.

For specific information on measles cases in recent years please see the following reports:

Measles Outbreak Factsheet



Protect Families & Communities with MMR Vaccine [1 page, 508]

2018

- [Notes from the Field: Community Outbreak of Measles — Clark County, Washington, 2018–2019](#)
MMWR. May 17, 2019
- [Notes from the Field: Measles Outbreaks from Imported Cases in Orthodox Jewish Communities — New York and New Jersey, 2018–2019](#)
MMWR. May 17, 2019

2017



- [Measles Outbreak — Minnesota April–May 2017](#)
MMWR. July 14, 2017

2016



- [Notes from the Field: Measles Outbreak at a United States Immigration and Customs Enforcement Facility — Arizona, May–June 2016](#)
MMWR. May 26, 2017
- [Measles Outbreak of Unknown Source — Shelby County, Tennessee, April–May 2016](#)
MMWR. September 30, 2016

2015



- [Measles — United States, January 4–April 2, 2015](#)
MMWR. April 17, 2015
- [Measles Outbreak — California, December 2014–February 2015](#)
MMWR. Feb 20, 2015

2014



- [Measles Outbreak in an Unvaccinated Family and a Possibly Associated International Traveler — Orange County, Florida, December 2012–January 2013](#)
MMWR. Sep 12, 2014
- [Notes from the Field: Measles in a Micronesian Community — King County, Washington, 2014](#)
MMWR. Sep 12, 2014
- [Measles — United States, January 1–May 23, 2014](#)
MMWR May 29, 2014
- [Notes from the Field: Measles — California, January 1–April 18, 2014](#)
MMWR. Apr 25, 2014

2013



- [Measles — United States, January 1–August 24, 2013](#)
MMWR. Sep 13, 2013
- [Notes from the field: Measles outbreak among members of a religious community — Brooklyn, New York, March–June 2013](#)
MMWR. Vol 62, No 36;752-3 09/13/2013
- [Notes from the field: Measles outbreak associated with a traveler returning from India — North Carolina, April–May 2013](#)

2011



- [Measles — United States, January-May 20, 2011.](#)
MMWR. May 27, 2011.
-

Last Reviewed: June 9, 2023