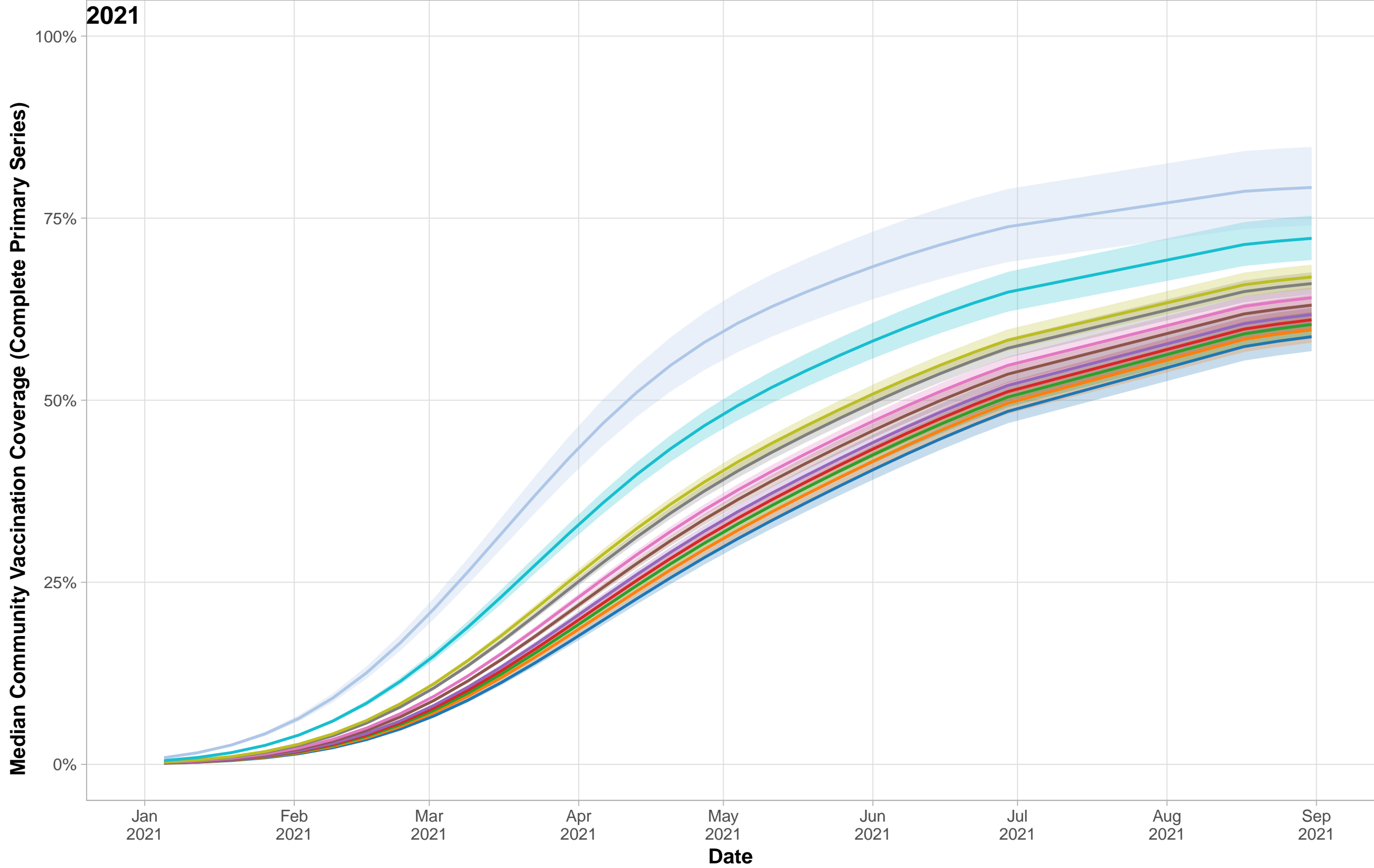


SUPPLEMENTARY FIGURE. Estimated community primary series* COVID-19 vaccination coverage† by deciles of median household income§ — 81 Los Angeles, California communities, January–September 2021



*Primary series means receipt of 2 doses of Pfizer BioNTech or Moderna vaccines or one dose of Johnson & Johnson vaccine.

† Calculated using multivariable mixed effects Poisson model, stratified by median community income correcting for community-level age, sex, foreign-born status, race, ethnicity, education, number of persons per household, insurance status, and an interaction term for income * time in months since data collection began in April 2020.

§ $p < 0.001$ for pairwise comparisons of median community vaccination coverage with completion of primary series between median community income strata in September 2021 using Wald's test with p -values adjusted for multiple comparisons.