



The National Respiratory and Enteric Virus Surveillance System (NREVSS)

RSV Census Regional Trends

Updated May 31, 2023

[« Back to Respiratory Syncytial Virus \(RSV\) Surveillance](#)

Participating laboratories report weekly to CDC the total number of RSV tests performed that week, and the number of those tests that were positive. Because reporting delays may be expected for some laboratories, data shown for the most recent weeks, in particular the most recent two weeks, may be less complete than others. The trend graphs below display by region the weekly average percent of diagnostic tests positive for RSV among all the diagnostic tests performed to detect RSV, as reported by participating laboratories.

In the United States, annual community outbreaks of RSV infections typically occur during late fall, winter, and early spring. There may be variation in the timing of outbreaks between regions, and between communities in the same region.



[About Census Regions and Divisions](#)  [1 MB, 2 pages] [↗](#)

Region 1: Northeast

Percent Positive

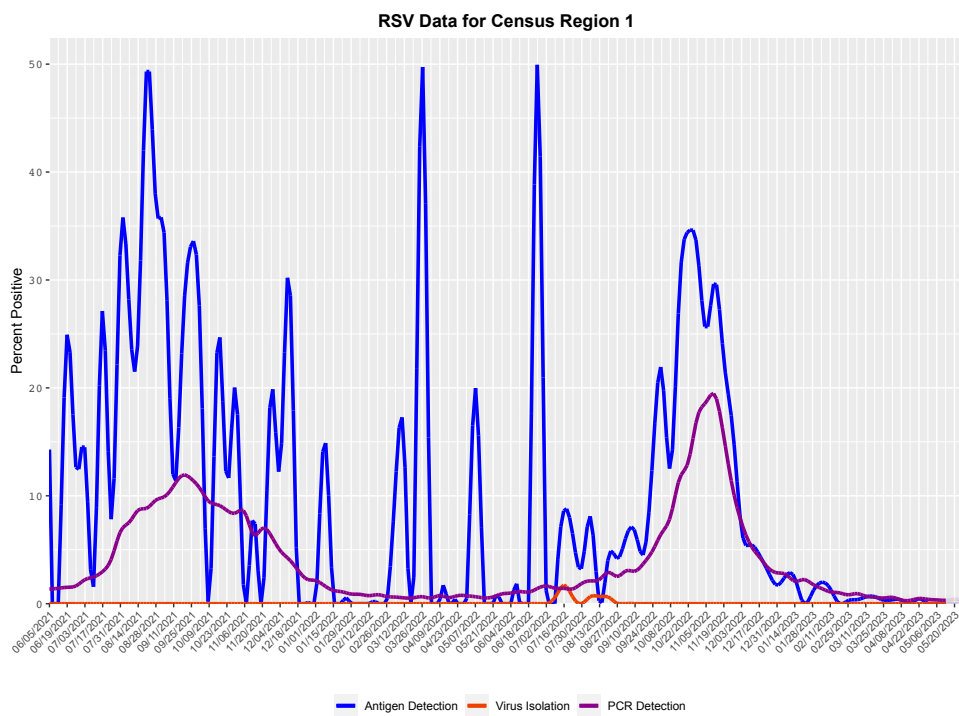


Table: Northeast United States percent positive RSV tests, by week

The gray line and gray bars indicate weeks when the data may be less complete.

Detections

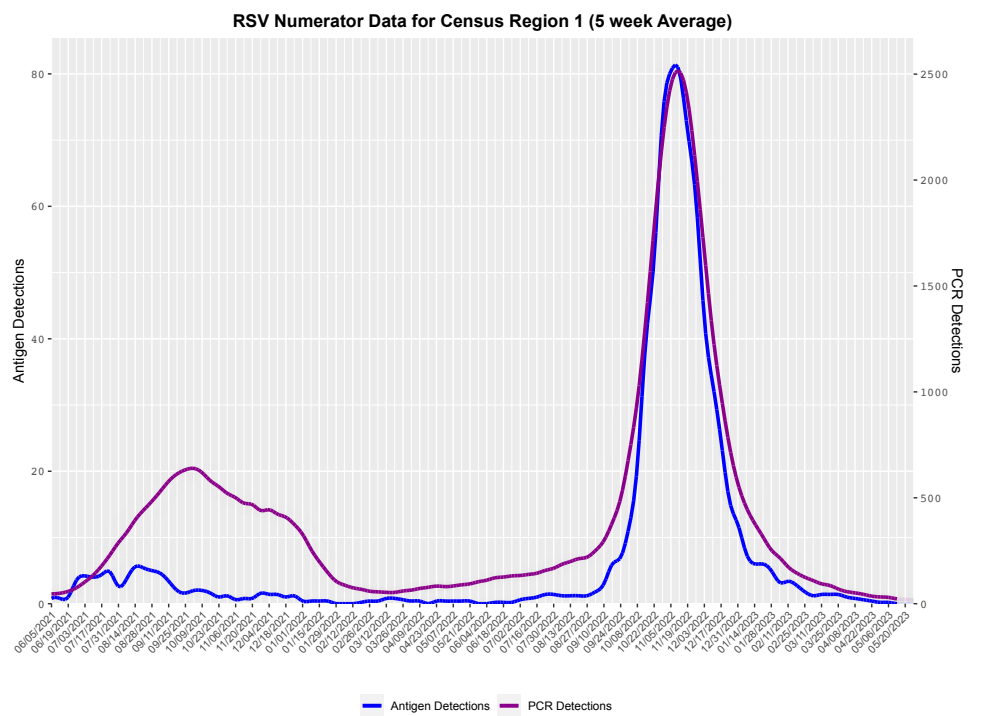


Table: Northeast United States RSV detections, by week

The gray line and gray bars indicate weeks when the data may be less complete.

Region 2: Midwest

Percent Positive

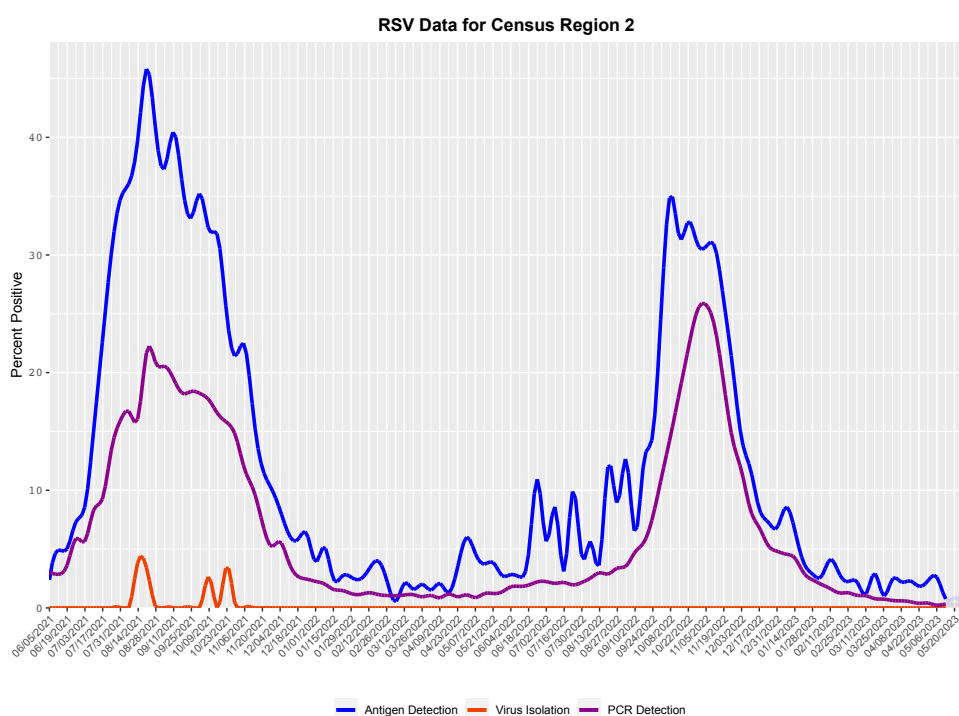


Table: Midwest United States percent positive RSV tests, by week

The gray line and gray bars indicate weeks when the data may be less complete.

Detections

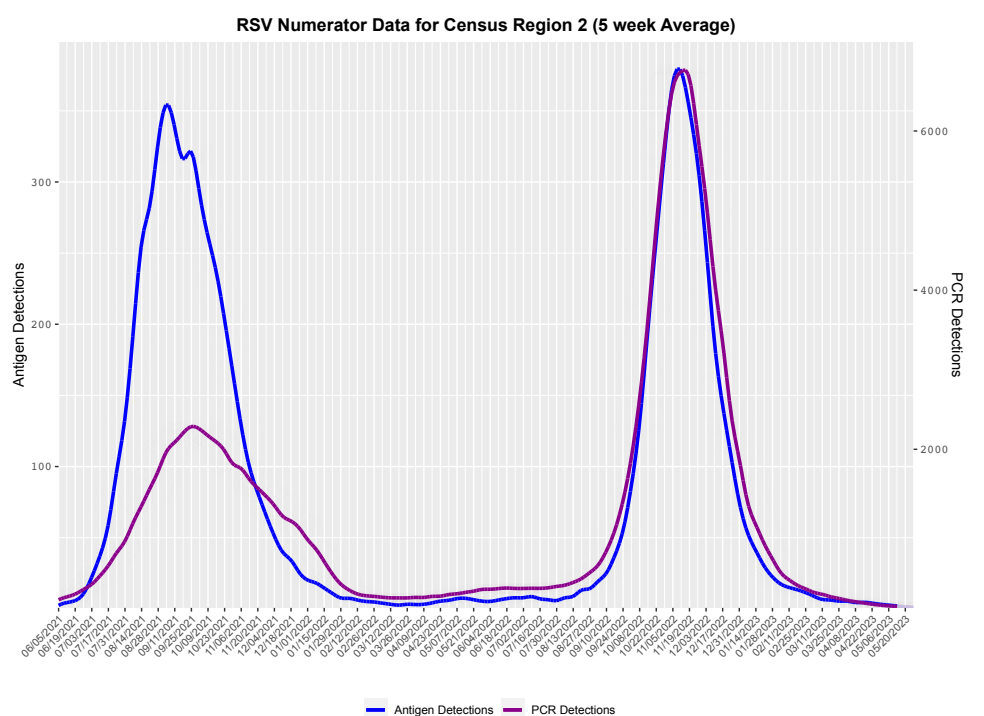


Table: Midwest United States RSV detections, by week

The gray line and gray bars indicate weeks when the data may be less complete.

Region 3: South

Percent Positive

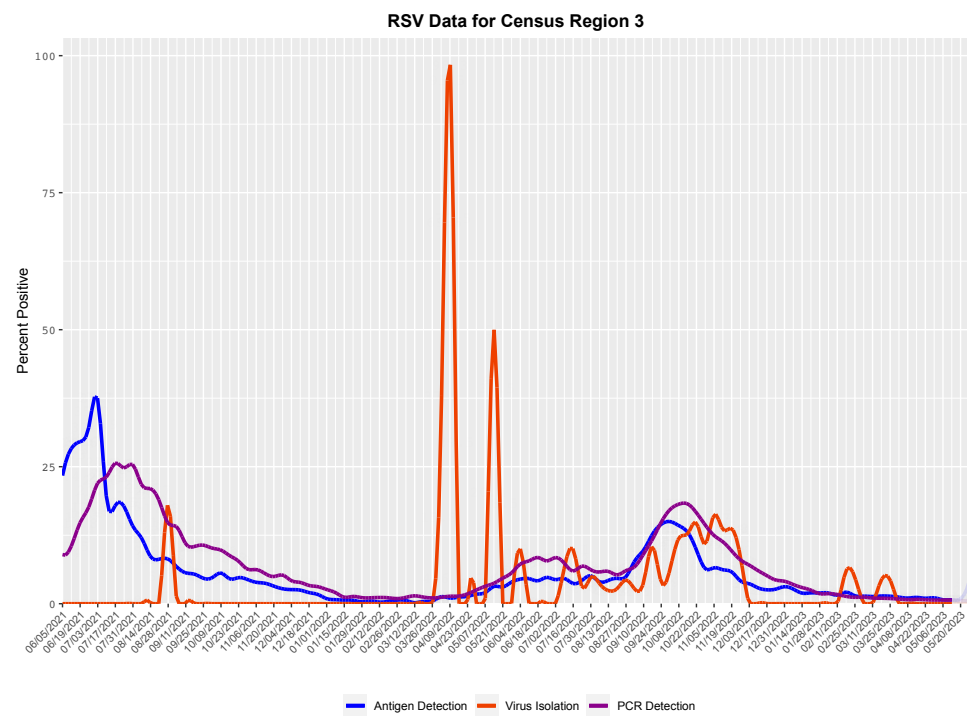


Table: South United States percent positive RSV tests, by week

The gray line and gray bars indicate weeks when the data may be less complete.

Detections

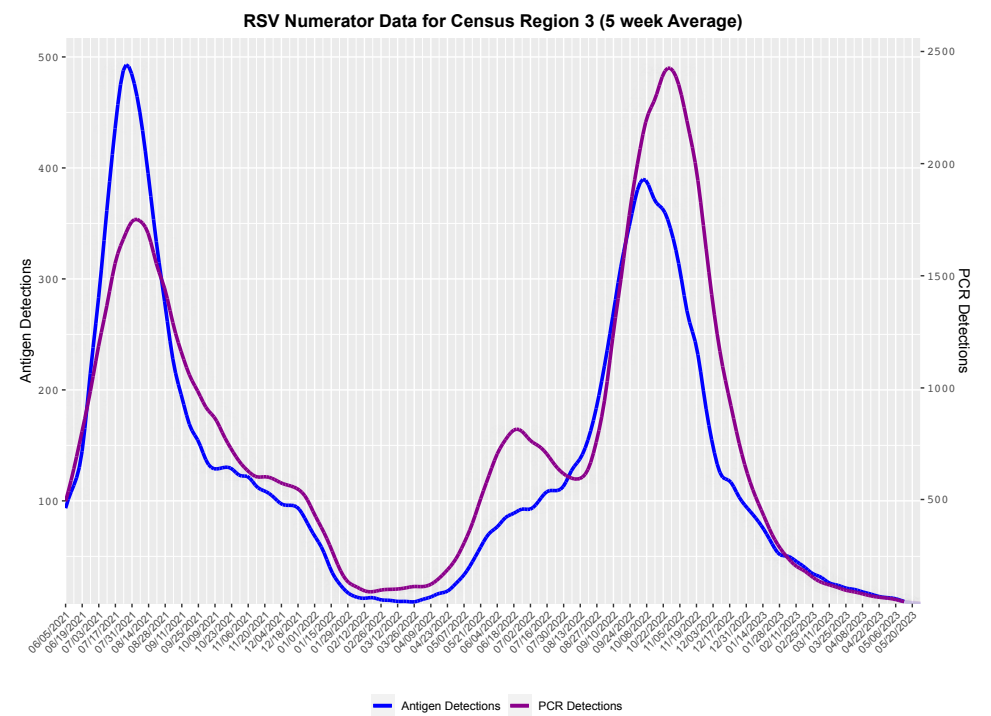


Table: South United States RSV detections, by week

The gray line and gray bars indicate weeks when the data may be less complete.

Region 4: West

Percent Positive

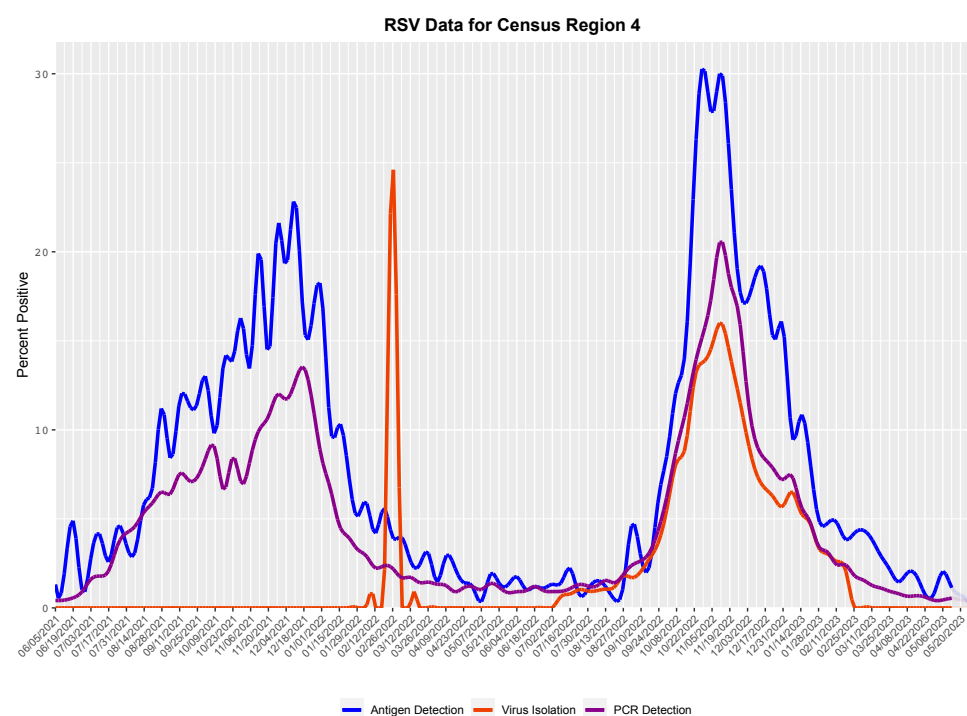


Table: West United States percent positive RSV tests, by week

The gray line and gray bars indicate weeks when the data may be less complete.

Detections

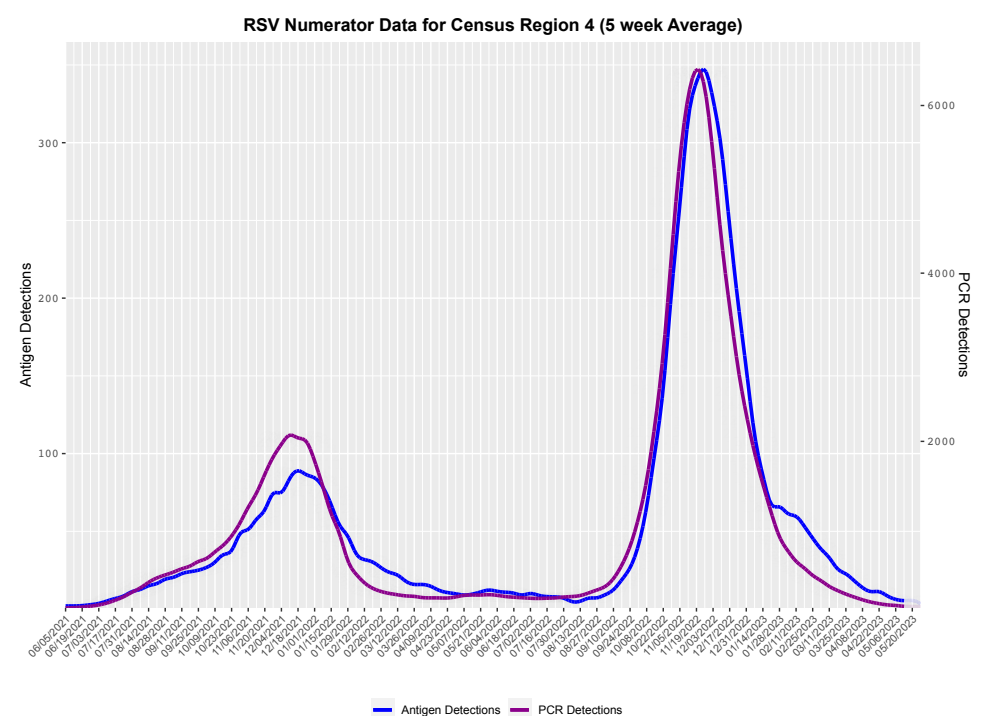
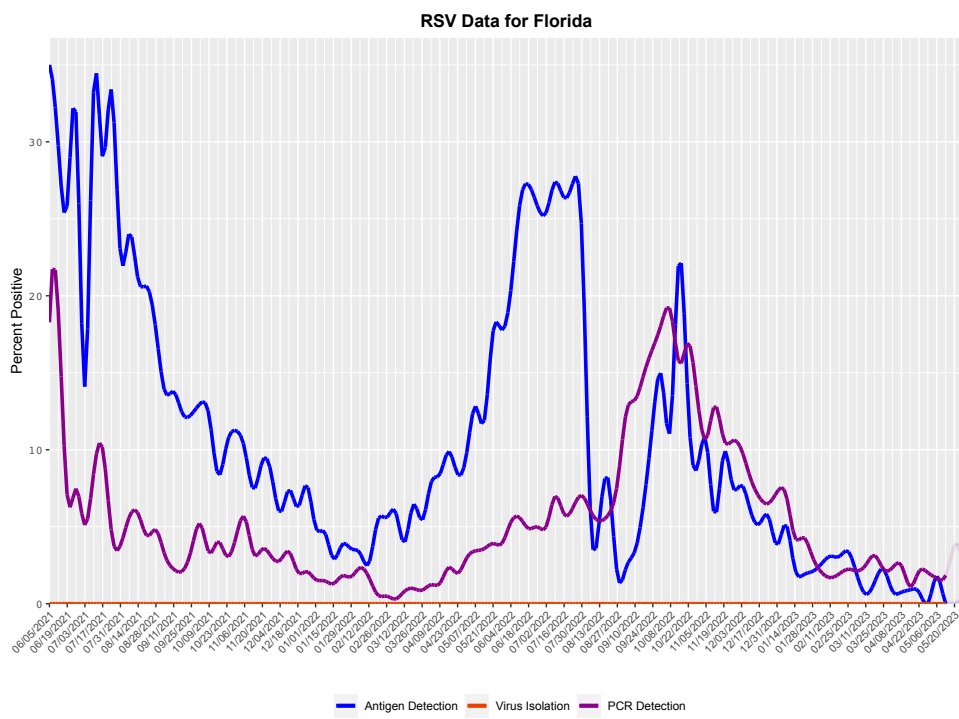


Table: West United States RSV detections, by week

The gray line and gray bars indicate weeks when the data may be less complete.

Florida State

Percent Positive



Detections

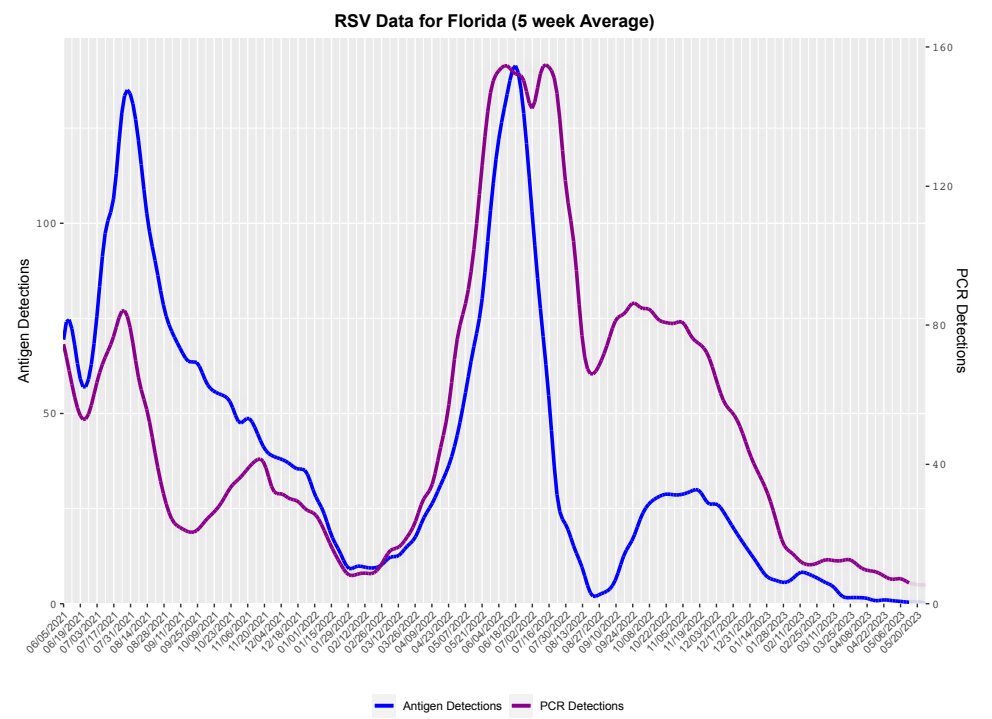


Table: Florida percent positive RSV tests, by week

The gray line and gray bars indicate weeks when the data may be less complete.

Table: Florida RSV detections, by week

The gray line and gray bars indicate weeks when the data may be less complete.

Last Reviewed: May 31, 2023

[Top of Page](#)