

Table S1. gDNA and cDNA library concentrations by sample type.

Sample type	gDNA concentration (ng/ $\mu$ L)	Bacterial cDNA (ng/ $\mu$ L)	Fungal cDNA (ng/ $\mu$ L)
OC-Sa1	23.35	35.35	11.70
OUT-Sa1	15.85	35.16	31.21
OC-Sa2	20.05	25.12	16.66
OUT-Sa2	24.49	44.81	10.99
OC-Sb1	21.7	19.54	21.16
OUT-Sb1	21.9	24.55	29.62
OC-Sb2	19.75	18.81	16.36
OUT-Sb2	24.05	27.08	33.08
OC-Sb3	26.15	14.23	21.08
OUT-Sb3	27.55	38.06	10.19
UOC-Sb4	34.15	3.20	18.80
OUT-Sb4	22.90	16.43	12.63
OC-Sc1	30.30	12.10	22.43
OUT-Sc1	33.25	29.96	29.09
OC-Sc2	24.80	11.45	26.81
OUT-Sc2	24.65	8.29	10.52
UOC-Sc3	24.20	37.23	14.12
OUT-Sc3	25.75	15.41	17.93

\* Only samples with cDNA concentration greater than 10 ng/ $\mu$ L were sequenced.



Figure S1. Lee et al.

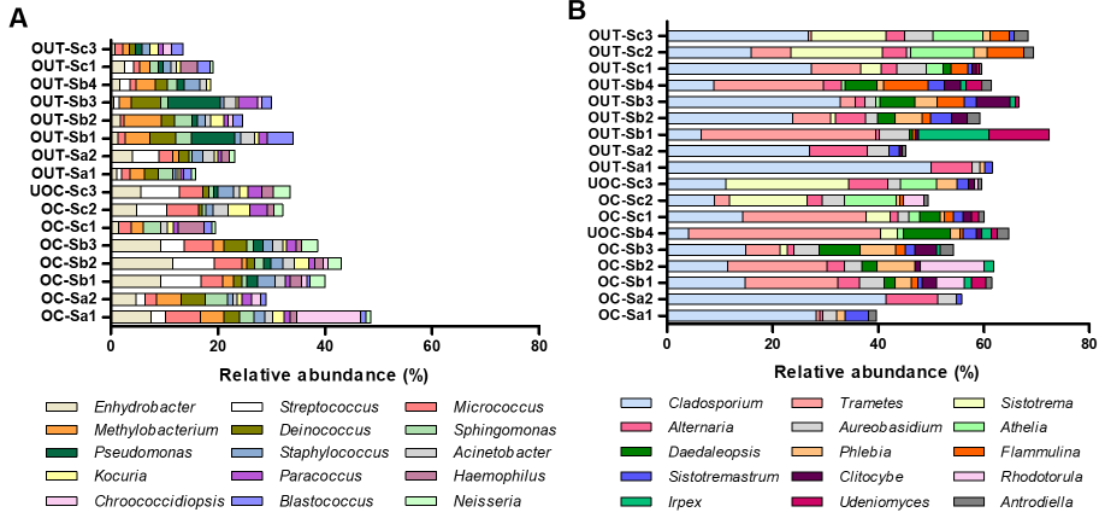


Figure S2. Lee et al.

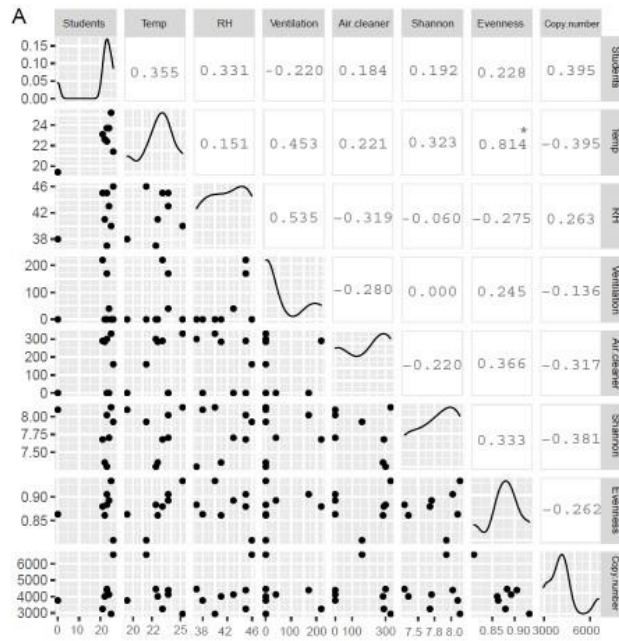


Figure S3A. Lee et al.

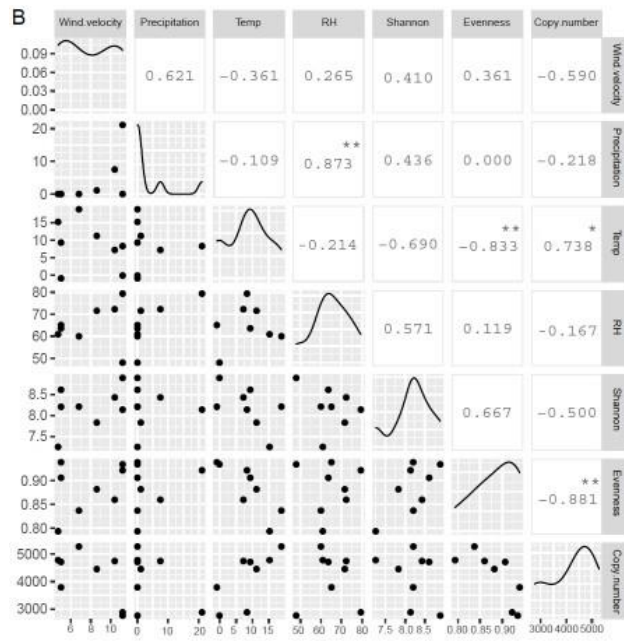


Figure S3B. Lee et al.

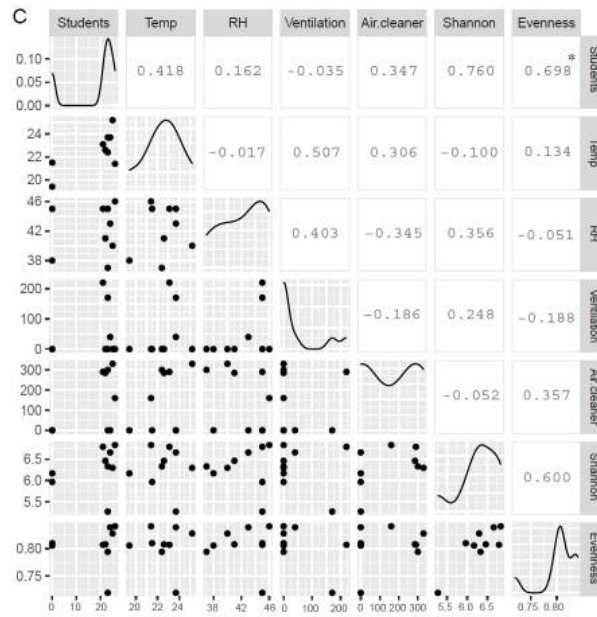


Figure S3C. Lee et al.

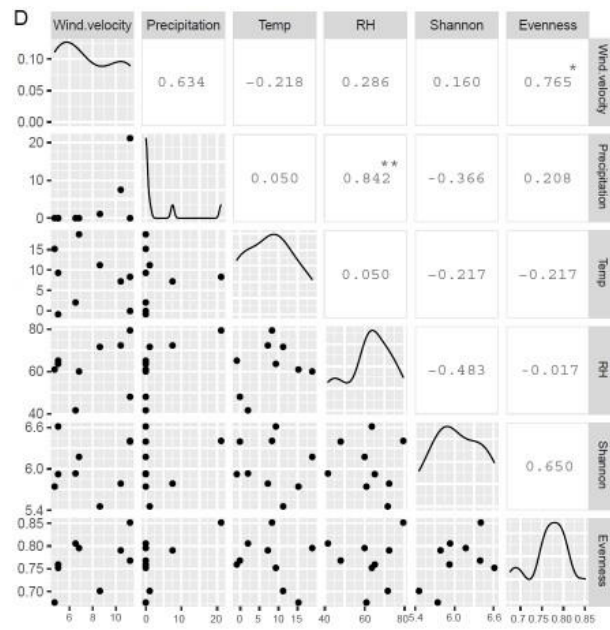


Figure S3D. Lee et al.