



HIV

CDC-Funded HIV Testing in the United States, Puerto Rico, and U.S. Virgin Islands

2021 ANNUAL HIV TESTING REPORT

OVERVIEW

The Centers for Disease Control and Prevention (CDC) receives, analyzes, and disseminates data on CDC-funded HIV testing and prevention activities reported through the National HIV Prevention Program Monitoring and Evaluation (NHM&E) data reporting system, EvaluationWeb®. These data are used to assess the impact of CDC-funded HIV testing efforts, inform programmatic activities, and document the progress of programs toward local, state, and national HIV prevention goals.

This report describes the demographics of persons tested, newly diagnosed with HIV, and linked to HIV medical care within 30 days in the United States, Puerto Rico, and U.S. Virgin Islands in 2021. Data presented in this report include HIV test-level data reported to CDC through EvaluationWeb® as of September 15, 2022 from 60 state and local health departments (HDs) and 150 community-based organizations (CBOs). It is important to note that many CDC-funded jurisdictions continued to experience interruptions in the provision and reporting of HIV testing and related services in 2021 due to the COVID-19 pandemic.



CDC-funded HIV testing by setting & site type*

A total of 1,736,850 CDC-funded HIV tests were conducted in 2021. Most tests were conducted in health care settings (74%) such as Sexually Transmitted Disease (STD) Clinics and Community Health Centers. The tables below show the number of tests conducted and the percentage of tests resulting in new diagnoses (newly diagnosed % positivity) by site type.

	TESTS (% POSITIVITY)		TESTS (% POSITIVITY)
Health care setting	1,278,274 (0.4%)	Non-health care setting	436,304 (0.7%)
Community Health Centers	410,981 (0.3%)	HIV Testing Sites	226,834 (0.8%)
STD Clinics	395,934 (0.5%)	Community Settings ^b	105,970 (0.5%)
Emergency Departments	198,641 (0.3%)	Correctional Facilities, Non-health care	15,250 (0.4%)
Correctional Clinics	54,535 (0.2%)	Other ^c	88,250 (0.5%)
Other ^a	218,183 (0.4%)		

* Not shown: 16,743 tests were conducted in mobile settings, 3,990 self-tests were reported, and 1,539 tests were missing information on site type.

^a Health care sites where medical services are provided other than those specified including primary care clinics, substance abuse treatment

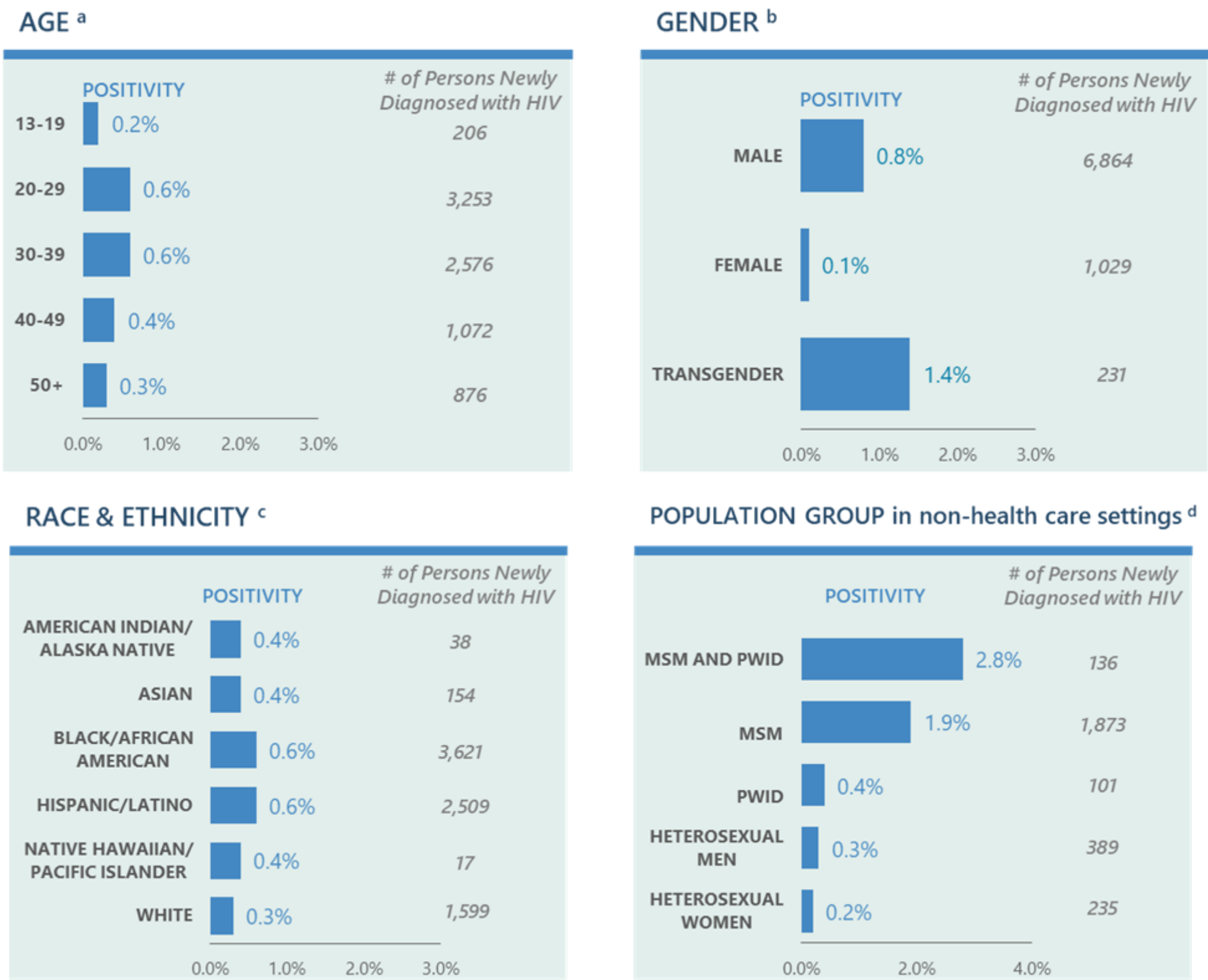
facilities, pharmacies, dental clinics, TB clinics, and inpatient hospitals.

^b Includes schools/educational facilities, church/mosque/synagogue/temple, commercial facilities, bar/club/adult entertainment, public areas, and individual residences.

^c Non-health care sites where prevention services are conducted other than those specified including health department field visits and syringe exchange programs.

Newly diagnosed HIV positivity by age, gender, race/ethnicity, and population group

Among the 1,736,850 CDC-funded HIV tests conducted, 8,149 (0.5%) persons were newly diagnosed with HIV. The figures below show newly diagnosed positivity (i.e., percentage of persons newly diagnosed with HIV among all CDC-funded tests conducted) by demographic characteristics and population groups. Additional information, including number of tests conducted by category, can be found in [Appendix Table 4](#).



^a “<13 years” category is not shown.

^b Transgender persons are defined as persons whose current gender identity differs from their sex assigned at birth. Persons with assigned sex at birth as “Male” and current gender identity as “Transgender – Female to Male”; assigned sex at birth as “Female” and current gender identity as “Transgender – Male to Female”; and records classified as “Unknown” are excluded.

^c All races are non-Hispanic/Latino. Hispanic/Latino ethnicity can be of any race. “More than one race” category is not shown.

^d Data on behaviors that define population groups are collected for all tests performed in non-health care settings and for HIV-positive persons in health care settings. Groups are mutually exclusive and based on behaviors in the past 12 months under the old (prior to 2018) NHM&E reporting requirements and in the past 5 years under the new NHM&E reporting requirements. MSM and PWID includes men who reported both male-to-male sexual contact and injection drug use. MSM includes men who reported male-to-male sexual contact. PWID includes persons who reported injection drug use.

CDC-funded HIV testing in 60 jurisdictions

Among 8,149 persons newly diagnosed with HIV, 78% were linked to HIV medical care within 30 days of their positive test and 75% were interviewed for partner services. The reported percentages varied by jurisdiction, as shown in [Table 1](#).



Data presented in this report include HIV test-level data from 60 state and local health departments (HDs) and 150 community-based organizations (CBOs) directly funded by CDC through 5 funding opportunities (PS15-1502, PS17-1704, PS18-1802, PS20-2010, and PS21-2102) and reported to CDC through EvaluationWeb® as of September 15, 2022. HDs funded through PS18-1802 and PS20-2010 and CBOs funded through PS17-1704 transitioned to new NHM&E data reporting requirements (i.e., required set of variables and program indicators) in 2018-2019. CBOs directly funded through PS15-1502 did not transition to new reporting requirements. CBOs directly funded through PS21-2102 utilized the new data reporting requirements. Test-level data reported under the old (prior to 2018) and new requirements were analyzed separately and resulting counts were combined in the tables and figures displayed.

DEFINITIONS AND INTERPRETING THIS REPORT

- An HIV test is defined as a sequence of one or more HIV tests conducted to determine a person's HIV status.
- Total number of tests includes only tests with negative or positive results; tests with discordant or inconclusive results are excluded.
- NHM&E data are collected at the test-level; therefore, data included in this report represent test records rather than individuals. Clients tested multiple times may be included in the data.
- A person with newly diagnosed HIV is a person who tests positive on the current test and has no indication of a previous positive test (includes persons with unconfirmed preliminary positive rapid tests and persons with confirmed positive tests).
- The reported percentage of persons linked to HIV medical care within 30 days is calculated by excluding tests with missing or unknown outcome data from the denominator, which likely overestimates actual linkage. Similarly, the reported percentage of persons interviewed for partner services is calculated by excluding tests with missing or unknown outcome data from the denominator, which likely overestimates the actual percentage interviewed.
- Procedures for data collection and verification vary among jurisdictions. For example, some jurisdictions accept a client's self-report as adequate evidence that the client is newly diagnosed or has been linked to HIV medical care; whereas others require a cross-check with the surveillance system to rule out prior diagnosis or to verify linkage to care.
- Jurisdictions vary considerably in resources available for HIV prevention and in the contexts in which they operate, which can affect program capacity. For example, some jurisdictions may receive state and local funds in addition to federal funds, whereas others may not. Examples of contextual issues that may affect program capacity include HIV prevalence, geography, political environment, laws and regulations, program infrastructure, surveillance system capacity, and accessibility to surveillance data to help guide program activities.
- Because the population accessing HIV testing services at publicly funded sites is not necessarily representative of all persons who are tested for HIV in the United States, these findings should not be applied to the general population.

ACKNOWLEDGEMENTS



Publication of this report would not have been possible without the hard work and dedication of state and local health departments and community-based organizations that collected and submitted the HIV test-level data. This report was prepared by Deesha Patel, Guoshen Wang, Arin Blake, and Carolyn Wright of the Translation and Evaluation Branch in the Division of HIV Prevention. We also acknowledge the contributions of Lisa Kimbrough and Yuko Mizuno of the Translation and Evaluation Branch; the Office of Informatics and Data Management; and the Program Development and Implementation Branch for their contribution toward monitoring and strengthening HIV prevention efforts in state and local health departments and community-based organizations.

Suggested citation: Centers for Disease Control and Prevention. *CDC-Funded HIV Testing in the United States, Puerto Rico, and the U.S. Virgin Islands, 2021*. <http://www.cdc.gov/hiv/library/reports/index.html>. Published April 2023. Accessed [Date].

For more information, contact:
Division of HIV Prevention
National Center for HIV, Viral Hepatitis, STD, and TB Prevention
U.S. Centers for Disease Control and Prevention
1600 Clifton Road NE, Atlanta, GA 30329
Phone: 1-800-CDC-INFO
Web address: <http://www.cdc.gov/HIV>

National HIV Prevention Program Monitoring and Evaluation Service Center
Phone: 1-855-374-7310, Email: NHMEservice@cdc.gov

TABLES

Table 1. CDC-funded HIV testing and outcomes among persons newly diagnosed with HIV in the United States, Puerto Rico, and U.S. Virgin Islands, 2021

	HIV tests			
CDC-funded jurisdiction	Number of HIV tests conducted in 2021	Number (%) of persons newly diagnosed with HIV	Percentage of persons newly diagnosed with HIV linked to HIV medical care within 30 days*	Percentage of persons newly diagnosed with HIV interviewed for partner services*
Alabama	60,250	323 (0.5%)	72%	69%
Alaska	426	2 (0.5%)	100%	100%
Arizona	59,817	238 (0.4%)	86%	89%
Arkansas	22,091	24 (0.1%)	76%	87%
California				
Los Angeles	54,816	389 (0.7%)	56%	26%
San Francisco	22,947	128 (0.6%)	45%	56%
California (excludes Los Angeles and San Francisco)	26,836	234 (0.9%)	85%	63%
Colorado	7,213	64 (0.9%)	81%	97%
Connecticut	77,201	109 (0.1%)	94%	98%
Delaware	4,754	15 (0.3%)	87%	87%
District of Columbia	15,104	114 (0.8%)	79%	36%
Florida	215,778	1,261 (0.6%)	77%	95%
Georgia	86,171	694 (0.8%)	79%	54%
Hawaii	1,717	10 (0.6%)	78%	100%
Idaho	6,047	11 (0.2%)	100%	100%
Illinois				
Chicago	6,479	33 (0.5%)	77%	73%
Illinois (excludes Chicago)	38,423	23 (0.1%)	91%	100%
Indiana	16,635	80 (0.5%)	65%	64%
Iowa	8,128	29 (0.4%)	92%	83%


	HIV tests			
CDC-funded jurisdiction	Number of HIV tests conducted in 2021	Number (%) of persons newly diagnosed with HIV	Percentage of persons newly diagnosed with HIV linked to HIV medical care within 30 days*	Percentage of persons newly diagnosed with HIV interviewed for partner services*
Kansas	14,382	40 (0.3%)	78%	95%
Kentucky	14,291	33 (0.2%)	43%	90%
Louisiana	91,510	245 (0.3%)	88%	100%
Maine	1,117	6 (0.5%)	50%	83%
Maryland				
Baltimore	25,774	49 (0.2%)	73%	84%
Maryland (excludes Baltimore)	21,468	26 (0.1%)	75%	22%
Massachusetts	39,124	90 (0.2%)	76%	59%
Michigan	22,908	149 (0.7%)	78%	73%
Minnesota	3,558	10 (0.3%)	88%	33%
Mississippi	28,214	122 (0.4%)	63%	92%
Missouri	11,707	77 (0.7%)	44%	92%
Montana	1,565	0 (0.0%)	N/A	N/A
Nebraska	4,274	16 (0.4%)	69%	63%
Nevada	18,633	132 (0.7%)	93%	90%
New Hampshire	430	0 (0.0%)	N/A	N/A
New Jersey	33,046	234 (0.7%)	87%	73%
New Mexico	6,048	32 (0.5%)	72%	75%
New York				
New York City	35,392	154 (0.4%)	84%	60%
New York (excludes New York City)	14,526	108 (0.7%)	84%	81%
North Carolina	23,427	70 (0.3%)	53%	79%
North Dakota	3,962	6 (0.2%)	50%	100%
Ohio	7,209	145 (2.0%)	78%	77%
Oklahoma	4,171	17 (0.4%)	100%	N/A
Oregon	7,146	33 (0.5%)	50%	90%
Pennsylvania				
Philadelphia	27,424	119 (0.4%)	84%	40%
Pennsylvania (excludes Philadelphia)	51,168	143 (0.3%)	81%	92%
Rhode Island	1,201	2 (0.2%)	50%	100%
South Carolina	60,124	274 (0.5%)	76%	65%
South Dakota	973	3 (0.3%)	67%	100%
Tennessee	63,275	499 (0.8%)	90%	96%

	HIV tests			
CDC-funded jurisdiction	Number of HIV tests conducted in 2021	Number (%) of persons newly diagnosed with HIV	Percentage of persons newly diagnosed with HIV linked to HIV medical care within 30 days*	Percentage of persons newly diagnosed with HIV interviewed for partner services*
Texas				
Houston	72,876	326 (0.4%)	84%	80%
Texas (excludes Houston)	227,018	841 (0.4%)	79%	52%
Utah	1,716	7 (0.4%)	43%	86%
Vermont	29	0 (0%)	N/A	N/A
Virginia	26,750	119 (0.4%)	82%	93%
Washington	10,080	40 (0.4%)	70%	72%
West Virginia	3,488	6 (0.2%)	100%	100%
Wisconsin	8,429	29 (0.3%)	79%	71%
Wyoming	3,033	1 (0.0%)	0%	100%
Puerto Rico	13,293	150 (1.1%)	87%	88%
U.S. Virgin Islands	1,258	15 (1.2%)	50%	77%
Total	1,736,850	8,149 (0.5%)	78%	75%

Data Source: National HIV Prevention Program Monitoring and Evaluation data reported through EvaluationWeb® as of September 15, 2022.

N/A= Not Applicable

* Reported percentages exclude tests without data to calculate the outcome (i.e., invalid, missing, or “Don’t Know”).

Appendix Table 1. Number of CDC-funded HIV tests and HIV positivity, 60 jurisdictions in the United States, Puerto Rico, and the U.S. Virgin Islands, 2021


		HIV-positive tests ^b							
	HIV tests ^a	Newly diagnosed HIV-positive tests ^c		Previously diagnosed HIV-positive tests ^d		Unable to determine prior HIV status ^e		Total	
CDC-funded jurisdiction	No.	No.	(%)	No.	(%)	No.	(%)	No.	(%)
Alabama	60,250	323	(0.5)	397	(0.7)	76	(0.1)	796	(1.3)
Alaska	426	2	(0.5)	1	(0.2)	0	(0.0)	3	(0.7)
Arizona	59,817	238	(0.4)	146	(0.2)	8	(0.0)	392	(0.7)
Arkansas	22,091	24	(0.1)	31	(0.1)	98	(0.4)	153	(0.7)
California									
Los Angeles	54,816	389	(0.7)	357	(0.7)	1	(0.0)	747	(1.4)
San Francisco	22,947	128	(0.6)	552	(2.4)	0	(0.0)	680	(3)
California (excludes Los Angeles and San Francisco)	26,836	234	(0.9)	139	(0.5)	14	(0.1)	387	(1.4)
Colorado	7,213	64	(0.9)	11	(0.2)	0	(0.0)	75	(1)
Connecticut	77,201	109	(0.1)	20	(0.0)	2	(0.0)	131	(0.2)

		HIV-positive tests ^b							
	HIV tests ^a	Newly diagnosed HIV-positive tests ^c		Previously diagnosed HIV-positive tests ^d		Unable to determine prior HIV status ^e		Total	
CDC-funded jurisdiction	No.	No.	(%)	No.	(%)	No.	(%)	No.	(%)
Delaware	4,754	15	(0.3)	12	(0.3)	1	(0.0)	28	(0.6)
District of Columbia	15,104	114	(0.8)	92	(0.6)	18	(0.1)	224	(1.5)
Florida	215,778	1,261	(0.6)	1,644	(0.8)	156	(0.1)	3,061	(1.4)
Georgia	86,171	694	(0.8)	265	(0.3)	27	(0.0)	986	(1.1)
Hawaii	1,717	10	(0.6)	2	(0.1)	0	(0.0)	12	(0.7)
Idaho	6,047	11	(0.2)	2	(0.0)	2	(0.0)	15	(0.2)
Illinois									
Chicago	6,479	33	(0.5)	28	(0.4)	0	(0.0)	61	(0.9)
Illinois (excludes Chicago)	38,423	23	(0.1)	10	(0.0)	7	(0.0)	40	(0.1)
Indiana	16,635	80	(0.5)	15	(0.1)	14	(0.1)	109	(0.7)
Iowa	8,128	29	(0.4)	5	(0.1)	1	(0.0)	35	(0.4)
Kansas	14,382	40	(0.3)	12	(0.1)	1	(0.0)	53	(0.4)
Kentucky	14,291	33	(0.2)	40	(0.3)	2	(0.0)	75	(0.5)
Louisiana	91,510	245	(0.3)	681	(0.7)	12	(0.0)	938	(1)
Maine	1,117	6	(0.5)	1	(0.1)	0	(0.0)	7	(0.6)
Maryland									
Baltimore	25,774	49	(0.2)	225	(0.9)	26	(0.1)	300	(1.2)
Maryland (excludes Baltimore)	21,468	26	(0.1)	30	(0.1)	1	(0.0)	57	(0.3)
Massachusetts	39,124	90	(0.2)	439	(1.1)	0	(0.0)	529	(1.4)
Michigan	22,908	149	(0.7)	56	(0.2)	17	(0.1)	222	(1)
Minnesota	3,558	10	(0.3)	10	(0.3)	4	(0.1)	24	(0.7)
Mississippi	28,214	122	(0.4)	59	(0.2)	0	(0.0)	181	(0.6)
Missouri	11,707	77	(0.7)	55	(0.5)	90	(0.8)	222	(1.9)
Montana	1,565	0	(0.0)	0	(0.0)	6	(0.4)	6	(0.4)
Nebraska	4,274	16	(0.4)	6	(0.1)	0	(0.0)	22	(0.5)
Nevada	18,633	132	(0.7)	136	(0.7)	11	(0.1)	279	(1.5)
New Hampshire	430	0	(0.0)	0	(0.0)	0	(0.0)	0	(0.0)
New Jersey	33,046	234	(0.7)	247	(0.7)	4	(0.0)	485	(1.5)
New Mexico	6,048	32	(0.5)	6	(0.1)	0	(0.0)	38	(0.6)
New York									
New York City	35,392	154	(0.4)	200	(0.6)	43	(0.1)	397	(1.1)
New York (excludes New York City)	14,526	108	(0.7)	232	(1.6)	40	(0.3)	380	(2.6)
North Carolina	23,427	70	(0.3)	102	(0.4)	0	(0.0)	172	(0.7)
North Dakota	3,962	6	(0.2)	1	(0.0)	1	(0.0)	8	(0.2)

		HIV-positive tests ^b							
	HIV tests ^a	Newly diagnosed HIV-positive tests ^c		Previously diagnosed HIV-positive tests ^d		Unable to determine prior HIV status ^e		Total	
CDC-funded jurisdiction	No.	No.	(%)	No.	(%)	No.	(%)	No.	(%)
Ohio	7,209	145	(2)	30	(0.4)	0	(0.0)	175	(2.4)
Oklahoma	4,171	17	(0.4)	4	(0.1)	83	(2)	104	(2.5)
Oregon	7,146	33	(0.5)	24	(0.3)	1	(0.0)	58	(0.8)
Pennsylvania									
Pennsylvania (excludes Philadelphia)	51,168	143	(0.3)	262	(0.5)	1	(0.0)	406	(0.8)
Philadelphia	27,424	119	(0.4)	160	(0.6)	50	(0.2)	329	(1.2)
Rhode Island	1,201	2	(0.2)	5	(0.4)	1	(0.1)	8	(0.7)
South Carolina	60,124	274	(0.5)	87	(0.1)	61	(0.1)	422	(0.7)
South Dakota	973	3	(0.3)	0	(0.0)	4	(0.4)	7	(0.7)
Tennessee	63,275	499	(0.8)	259	(0.4)	5	(0.0)	763	(1.2)
Texas									
Houston	72,876	326	(0.4)	667	(0.9)	1	(0.0)	994	(1.4)
Texas (excludes Houston)	227,018	841	(0.4)	1,168	(0.5)	2	(0.0)	2,011	(0.9)
Utah	1,716	7	(0.4)	2	(0.1)	0	(0.0)	9	(0.5)
Vermont	29	0	(0.0)	0	(0.0)	1	(3.4)	1	(3.4)
Virginia	26,750	119	(0.4)	73	(0.3)	3	(0.0)	195	(0.7)
Washington	10,080	40	(0.4)	15	(0.1)	3	(0.0)	58	(0.6)
West Virginia	3,488	6	(0.2)	9	(0.3)	46	(1.3)	61	(1.7)
Wisconsin	8,429	29	(0.3)	7	(0.1)	22	(0.3)	58	(0.7)
Wyoming	3,033	1	(0.0)	0	(0.0)	4	(0.1)	5	(0.2)
Puerto Rico	13,293	150	(1.1)	75	(0.6)	1	(0.0)	226	(1.7)
U.S. Virgin Islands	1,258	15	(1.2)	9	(0.7)	0	(0.0)	24	(1.9)
Total	1,736,850	8,149	(0.5)	9,123	(0.5)	972	(0.1)	18,244	(1.1)

Data Source: National HIV Prevention Program Monitoring and Evaluation data reported through EvaluationWeb® as of September 15, 2022.

^a Total number of tests includes only tests with negative or positive results; tests with discordant or inconclusive results are excluded.

^b A positive test includes unconfirmed preliminary positive rapid tests and confirmed positive tests.

^c A newly diagnosed HIV-positive test refers to a person who has a current HIV-positive test result (includes unconfirmed preliminary positive rapid tests and confirmed positive tests) and no indication of a previous HIV-positive test.

^d A previously diagnosed HIV-positive test is a test on a client who was previously reported to the HIV surveillance system or who reports a previous positive HIV test or evidence of a previous positive test is found on review of other data sources.

^e A positive test that was missing information on prior HIV status or was reported as unable to determine prior HIV status (i.e., the HIV surveillance system was not checked, no other data sources were reviewed, and there is no information from the client about previous HIV test results)

Appendix Table 2. Number of CDC-funded HIV tests and newly diagnosed HIV positivity in health care and non-health care settings, 60 jurisdictions in the United States, Puerto Rico, and the U.S. Virgin Islands, 2021

	Health care settings				Non-health care settings			
	HIV tests ^a		Newly diagnosed HIV-positive tests ^b		HIV tests ^a		Newly diagnosed HIV-positive tests ^b	
CDC-funded jurisdiction	No.	(%)	No.	(%)	No.	(%)	No.	(%)
Alabama	364	(0.6)	0	(0.0)	59,886	(99.4)	323	(0.5)
Alaska	234	(54.9)	2	(0.9)	166	(39)	0	(0.0)
Arizona	54,790	(91.6)	214	(0.4)	4,048	(6.8)	23	(0.6)
Arkansas	20,744	(93.9)	0	(0.0)	1,228	(5.6)	23	(1.9)
California								
Los Angeles	33,516	(61.1)	193	(0.6)	18,278	(33.3)	183	(1)
San Francisco	22,889	(99.7)	128	(0.6)	58	(0.3)	0	(0.0)
California (excludes Los Angeles and San Francisco)	17,655	(65.8)	148	(0.8)	5,547	(20.7)	39	(0.7)
Colorado	5,273	(73.1)	46	(0.9)	1,940	(26.9)	18	(0.9)
Connecticut	75,606	(97.9)	102	(0.1)	1,295	(1.7)	7	(0.5)
Delaware	3,006	(63.2)	8	(0.3)	1,424	(30)	7	(0.5)
District of Columbia	9,080	(60.1)	78	(0.9)	5,852	(38.7)	36	(0.6)
Florida	118,726	(55)	748	(0.6)	92,176	(42.7)	495	(0.5)
Georgia	53,854	(62.5)	237	(0.4)	31,675	(36.8)	456	(1.4)
Hawaii	466	(27.1)	2	(0.4)	1,197	(69.7)	8	(0.7)
Idaho	5,799	(95.9)	11	(0.2)	194	(3.2)	0	(0.0)
Illinois								
Chicago	3,955	(61)	16	(0.4)	2,522	(38.9)	17	(0.7)
Illinois (excludes Chicago)	31,736	(82.6)	14	(0.0)	6,687	(17.4)	9	(0.1)
Indiana	9,804	(58.9)	46	(0.5)	6,828	(41)	34	(0.5)
Iowa	6,489	(79.8)	26	(0.4)	1,639	(20.2)	3	(0.2)
Kansas	11,026	(76.7)	20	(0.2)	3,356	(23.3)	20	(0.6)
Kentucky	11,663	(81.6)	22	(0.2)	2,628	(18.4)	11	(0.4)
Louisiana	73,469	(80.3)	164	(0.2)	17,882	(19.5)	81	(0.5)
Maine	819	(73.3)	6	(0.7)	264	(23.6)	0	(0.0)
Maryland								
Baltimore	25,381	(98.5)	49	(0.2)	319	(1.2)	0	(0.0)
Maryland (excludes Baltimore)	19,011	(88.6)	22	(0.1)	2,441	(11.4)	4	(0.2)
Massachusetts	37,150	(95)	65	(0.2)	1,974	(5)	25	(1.3)
Michigan	20,170	(88)	116	(0.6)	2,307	(10.1)	32	(1.4)
Minnesota	682	(19.2)	0	(0.0)	2,865	(80.5)	10	(0.3)
Mississippi	25,891	(91.8)	114	(0.4)	2,167	(7.7)	7	(0.3)
Missouri	6,865	(58.6)	47	(0.7)	4,842	(41.4)	30	(0.6)
Montana	741	(47.3)	0	(0.0)	815	(52.1)	0	(0.0)
Nebraska	2,788	(65.2)	11	(0.4)	1,486	(34.8)	5	(0.3)

	Health care settings				Non-health care settings			
	HIV tests ^a		Newly diagnosed HIV-positive tests ^b		HIV tests ^a		Newly diagnosed HIV-positive tests ^b	
CDC-funded jurisdiction	No.	(%)	No.	(%)	No.	(%)	No.	(%)
Nevada	7,731	(41.5)	46	(0.6)	10,902	(58.5)	86	(0.8)
New Hampshire	243	(56.5)	0	(0.0)	187	(43.5)	0	(0.0)
New Jersey	19,133	(57.9)	149	(0.8)	13,913	(42.1)	85	(0.6)
New Mexico	4,520	(74.7)	19	(0.4)	1,528	(25.3)	13	(0.9)
New York								
New York City	32,772	(92.6)	128	(0.4)	2,088	(5.9)	25	(1.2)
New York (excludes New York City)	4,441	(30.6)	64	(1.4)	8,552	(58.9)	43	(0.5)
North Carolina	2,656	(11.3)	7	(0.3)	20,341	(86.8)	63	(0.3)
North Dakota	383	(9.7)	0	(0.0)	3,579	(90.3)	6	(0.2)
Ohio	4,518	(62.7)	101	(2.2)	2,689	(37.3)	44	(1.6)
Oklahoma	53	(1.3)	0	(0.0)	4,118	(98.7)	17	(0.4)
Oregon	5,452	(76.3)	22	(0.4)	1,660	(23.2)	11	(0.7)
Pennsylvania								
Pennsylvania (excludes Philadelphia)	46,626	(91.1)	128	(0.3)	4,293	(8.4)	15	(0.3)
Philadelphia	23,253	(84.8)	102	(0.4)	3,706	(13.5)	16	(0.4)
Rhode Island	3	(0.2)	0	(0.0)	872	(72.6)	2	(0.2)
South Carolina	51,504	(85.7)	186	(0.4)	8,423	(14)	85	(1)
South Dakota	675	(69.4)	3	(0.4)	298	(30.6)	0	(0.0)
Tennessee	58,262	(92.1)	422	(0.7)	4,868	(7.7)	77	(1.6)
Texas								
Houston	66,427	(91.2)	194	(0.3)	6,449	(8.8)	132	(2)
Texas (excludes Houston)	197,020	(86.8)	547	(0.3)	27,272	(12)	276	(1)
Utah	1,580	(92.1)	7	(0.4)	2	(0.1)	0	(0.0)
Vermont	2	(6.9)	0	(0.0)	27	(93.1)	0	(0.0)
Virginia	17,164	(64.2)	55	(0.3)	9,212	(34.4)	63	(0.7)
Washington	6,333	(62.8)	17	(0.3)	3,746	(37.2)	23	(0.6)
West Virginia	2,687	(77)	5	(0.2)	801	(23)	1	(0.1)
Wisconsin	3,810	(45.2)	10	(0.3)	4,619	(54.8)	19	(0.4)
Wyoming	3,033	(100)	1	(0.0)	0	(0.0)	0	(0.0)
Puerto Rico	7,648	(57.5)	134	(1.8)	5,618	(42.3)	15	(0.3)
U.S. Virgin Islands	703	(55.9)	13	(1.8)	555	(44.1)	2	(0.4)
Total	1,278,274	(73.6)	5,015	(0.4)	436,304	(25.1)	3,025	(0.7)

Data Source: National HIV Prevention Program Monitoring and Evaluation data reported through EvaluationWeb® as of September 15, 2022.

^a Total number of tests includes only tests with negative or positive results; tests with discordant or inconclusive results are excluded.

^b A newly diagnosed HIV-positive test refers to a person who has a current HIV-positive test result (includes unconfirmed preliminary positive rapid tests and confirmed positive tests) and no indication of a previous HIV-positive test.

Appendix Table 3. CDC-funded HIV testing and linkage to HIV medical care among persons with newly diagnosed HIV infection, 60 jurisdictions in the United States, Puerto Rico, and the U.S. Virgin Islands, 2021

	HIV tests			Linkage to HIV Medical Care in 30 days ^c					
CDC-funded jurisdiction	All HIV tests ^a	Newly diagnosed HIV-positive tests ^b	Newly diagnosed HIV-positive tests (%)	Linked	Not linked	Missing /invalid	Missing /invalid (%)	Denominator for report percentage ^d	Reported Percentage ^e (%)
Alabama	60,250	323	(0.5)	227	88	8	(2.5)	315	(72.1)
Alaska	426	2	(0.5)	2	0	0	(0.0)	2	(100.0)
Arizona	59,817	238	(0.4)	204	33	1	(0.4)	237	(86.1)
Arkansas	22,091	24	(0.1)	16	5	3	(12.5)	21	(76.2)
California									
Los Angeles	54,816	389	(0.7)	207	162	20	(5.1)	369	(56.1)
San Francisco	22,947	128	(0.6)	54	67	7	(5.5)	121	(44.6)
California (excludes Los Angeles and San Francisco)	26,836	234	(0.9)	180	32	22	(9.4)	212	(84.9)
Colorado	7,213	64	(0.9)	50	12	2	(3.1)	62	(80.6)
Connecticut	77,201	109	(0.1)	102	7	0	(0.0)	109	(93.6)
Delaware	4,754	15	(0.3)	13	2	0	(0.0)	15	(86.7)
District of Columbia	15,104	114	(0.8)	86	23	5	(4.4)	109	(78.9)
Florida	215,778	1,261	(0.6)	688	207	366	(29)	895	(76.9)
Georgia	86,171	694	(0.8)	505	132	57	(8.2)	637	(79.3)
Hawaii	1,717	10	(0.6)	7	2	1	(10)	9	(77.8)
Idaho	6,047	11	(0.2)	11	0	0	(0.0)	11	(100.0)
Illinois									
Chicago	6,479	33	(0.5)	17	5	11	(33.3)	22	(77.3)
Illinois (excludes Chicago)	38,423	23	(0.1)	21	2	0	(0.0)	23	(91.3)
Indiana	16,635	80	(0.5)	46	25	9	(11.3)	71	(64.8)
Iowa	8,128	29	(0.4)	24	2	3	(10.3)	26	(92.3)
Kansas	14,382	40	(0.3)	31	9	0	(0.0)	40	(77.5)
Kentucky	14,291	33	(0.2)	12	16	5	(15.2)	28	(42.9)
Louisiana	91,510	245	(0.3)	191	27	27	(11)	218	(87.6)
Maine	1,117	6	(0.5)	3	3	0	(0.0)	6	(50.0)
Maryland									
Baltimore	25,774	49	(0.2)	22	8	19	(38.8)	30	(73.3)
Maryland (excludes Baltimore)	21,468	26	(0.1)	6	2	18	(69.2)	8	(75.0)
Massachusetts	39,124	90	(0.2)	67	21	2	(2.2)	88	(76.1)
Michigan	22,908	149	(0.7)	115	33	1	(0.7)	148	(77.7)
Minnesota	3,558	10	(0.3)	7	1	2	(20.0)	8	(87.5)
Mississippi	28,214	122	(0.4)	77	45	0	(0.0)	122	(63.1)

	HIV tests			Linkage to HIV Medical Care in 30 days ^c					
CDC-funded jurisdiction	All HIV tests ^a	Newly diagnosed HIV-positive tests ^b	Newly diagnosed HIV-positive tests (%)	Linked	Not linked	Missing /invalid	Missing /invalid (%)	Denominator for report percentage ^d	Reported Percentage ^e (%)
Missouri	11,707	77	(0.7)	14	18	45	(58.4)	32	(43.8)
Montana	1,565	0	—	—	—	—	—	—	—
Nebraska	4,274	16	(0.4)	11	5	0	(0.0)	16	(68.8)
Nevada	18,633	132	(0.7)	107	8	17	(12.9)	115	(93.0)
New Hampshire	430	0	—	—	—	—	—	—	—
New Jersey	33,046	234	(0.7)	189	28	17	(7.3)	217	(87.1)
New Mexico	6,048	32	(0.5)	23	9	0	(0.0)	32	(71.9)
New York									
New York City	35,392	154	(0.4)	117	23	14	(9.1)	140	(83.6)
New York (excludes New York City)	14,526	108	(0.7)	91	17	0	(0.0)	108	(84.3)
North Carolina	23,427	70	(0.3)	37	33	0	(0.0)	70	(52.9)
North Dakota	3,962	6	(0.2)	3	3	0	(0.0)	6	(50.0)
Ohio	7,209	145	(2)	110	31	4	(2.8)	141	(78.0)
Oklahoma	4,171	17	(0.4)	16	0	1	(5.9)	16	(100.0)
Oregon	7,146	33	(0.5)	16	16	1	(3.0)	32	(50.0)
Pennsylvania									
Pennsylvania (excludes Philadelphia)	51,168	143	(0.3)	116	27	0	(0.0)	143	(81.1)
Philadelphia	27,424	119	(0.4)	99	19	1	(0.8)	118	(83.9)
Rhode Island	1,201	2	(0.2)	1	1	0	(0.0)	2	(50.0)
South Carolina	60,124	274	(0.5)	146	45	83	(30.3)	191	(76.4)
South Dakota	973	3	(0.3)	2	1	0	(0.0)	3	(66.7)
Tennessee	63,275	499	(0.8)	163	18	318	(63.7)	181	(90.1)
Texas									
Houston	72,876	326	(0.4)	188	35	103	(31.6)	223	(84.3)
Texas (excludes Houston)	227,018	841	(0.4)	643	170	28	(3.3)	813	(79.1)
Utah	1,716	7	(0.4)	3	4	0	(0.0)	7	(42.9)
Vermont	29	0	—	—	—	—	—	—	—
Virginia	26,750	119	(0.4)	94	21	4	(3.4)	115	(81.7)
Washington	10,080	40	(0.4)	26	11	3	(7.5)	37	(70.3)
West Virginia	3,488	6	(0.2)	4	0	2	(33.3)	4	(100)
Wisconsin	8,429	29	(0.3)	22	6	1	(3.4)	28	(78.6)
Wyoming	3,033	1	(0.0)	0	0	1	(100.0)	0	—
Puerto Rico	13,293	150	(1.1)	129	20	1	(0.7)	149	(86.6)
U.S. Virgin Islands	1,258	15	(1.2)	6	6	3	(20)	12	(50.0)
Total	1,736,850	8,149	(0.5)	5,367	1,546	1,236	(15.2)	6,913	(77.6)

Data Source: National HIV Prevention Program Monitoring and Evaluation data reported through EvaluationWeb® as of September 15, 2022.

^a Total number of tests includes only tests with negative or positive results; tests with discordant or inconclusive results are excluded.

^b A newly diagnosed HIV-positive test refers to a person who has a current HIV-positive test result (includes unconfirmed preliminary positive rapid tests and confirmed positive tests) and no indication of a previous HIV-positive test.

^c A newly diagnosed person is considered linked to HIV medical care within 30 days if they attended an appointment for HIV medical care within 30 days after diagnosis.

^d Number of persons with newly diagnosed HIV infection whose test records have valid and complete information on attendance and on

date of first appointment for HIV medical care within 30 days after diagnosis. This is the denominator used to calculate the reported percentage.

^e Reported percentages exclude tests without data to calculate the outcome (i.e., invalid, missing, or “Don’t Know”).

Appendix Table 4: CDC-funded HIV testing and linkage to HIV medical care among persons with newly diagnosed HIV infection by demographic characteristics, 60 jurisdictions in the United States, Puerto Rico, and the U.S. Virgin Islands, 2021

	HIV tests				Linkage to HIV medical care in 30 days ^c					
Characteristics	All tests ^a	Percent of all tests (%)	Newly diagnosed HIV-positive tests ^b	Newly diagnosed HIV-positive tests (%)	Linked	Not linked	Missing /invalid	Missing /invalid (%)	Denominator for report percentage ^d	Reported Percentage ^e (%)
Age at test (years)										
<13	2,910	(0.2)	2	(0.1)	1	0	1	(50.0)	1	(100.0)
13-19	88,767	(5.1)	206	(0.2)	148	34	24	(11.7)	182	(81.3)
20-29	583,150	(33.6)	3,253	(0.6)	2,263	587	403	(12.4)	2,850	(79.4)
30-39	466,054	(26.8)	2,576	(0.6)	1,724	516	336	(13.0)	2,240	(77.0)
40-49	257,568	(14.8)	1,072	(0.4)	663	223	186	(17.4)	886	(74.8)
50+	317,968	(18.3)	876	(0.3)	541	183	152	(17.4)	724	(74.7)
Missing/invalid	20,433	(1.2)	164	(0.8)	27	3	134	(81.7)	30	(90.0)
Gender										
Men	913,661	(52.6)	6,864	(0.8)	4,571	1,294	999	(14.6)	5,865	(77.9)
Women	798,644	(46.0)	1,029	(0.1)	628	191	210	(20.4)	819	(76.7)
Transgender	16,225	(0.9)	231	(1.4)	153	51	27	(11.7)	204	(75.0)
Another gender	4,263	(0.2)	16	(0.4)	9	7	0	0.0	16	(56.3)
Declined/not asked/unknown/missing	4,057	(0.2)	9	(0.2)	6	3	0	0.0	9	(66.7)
Race/Ethnicity										
American Indian or Alaska Native	10,145	(0.6)	38	(0.4)	25	10	3	(7.9)	35	(71.4)
Asian	42,175	(2.4)	154	(0.4)	105	30	19	(12.3)	135	(77.8)
Black or African American	654,965	(37.7)	3,621	(0.6)	2,265	699	657	(18.1)	2,964	(76.4)
Hispanic or Latino	450,209	(25.9)	2,509	(0.6)	1,850	395	264	(10.5)	2,245	(82.4)
Native Hawaiian or Pacific Islander	3,878	(0.2)	17	(0.4)	11	6	0	0.0	17	(64.7)
White	479,511	(27.6)	1,599	(0.3)	987	366	246	(15.4)	1,353	(72.9)
Two or more races selected	14,170	(0.8)	80	(0.6)	52	16	12	(15.0)	68	(76.5)
Declined	30,954	(1.8)	47	(0.2)	29	12	6	(12.8)	41	(70.7)
Don't know/not asked	31,904	(1.8)	64	(0.2)	37	9	18	(28.1)	46	(80.4)
Missing/invalid	18,939	(1.1)	20	(0.1)	6	3	11	(55.0)	9	(66.7)
Population groups in non-health care facilities ^f										
Men who have sex with men and who inject drugs	4,830	(1.1)	136	(2.8)	86	36	14	(10.3)	122	(70.5)
Men who have sex with men	96,643	(22.2)	1,873	(1.9)	1,367	309	197	(10.5)	1,676	(81.6)
Transgender persons who inject drugs	754	(0.2)	17	(2.3)	9	5	3	(17.6)	14	(64.3)
Transgender persons	6,280	(1.4)	89	(1.4)	57	19	13	(14.6)	76	(75.0)

	HIV tests				Linkage to HIV medical care in 30 days ^c					
Characteristics	All tests ^a	Percent of all tests (%)	Newly diagnosed HIV-positive tests ^b	Newly diagnosed HIV-positive tests (%)	Linked	Not linked	Missing /invalid	Missing /invalid (%)	Denominator for report percentage ^d	Reported Percentage ^e (%)
Persons who inject drugs	27,866	(6.4)	101	(0.4)	56	31	14	(13.9)	87	(64.4)
Heterosexual men	114,364	(26.2)	389	(0.3)	236	96	57	(14.7)	332	(71.1)
Heterosexual women	128,567	(29.5)	235	(0.2)	158	38	39	(16.6)	196	(80.6)
Women who have sex with women	9,193	(2.1)	20	(0.2)	8	11	1	(5.0)	19	(42.1)
Sex with transgender persons	778	(0.2)	9	(1.2)	9	0	0	0.0	9	(100.0)
No sexual contact or injection drug use	23,241	(5.3)	123	(0.5)	64	38	21	(17.1)	102	(62.7)
Missing/invalid	23,788	(5.5)	33	(0.1)	19	10	4	(12.1)	29	(65.5)
Region										
Northeast	280,658	(16.2)	965	(0.3)	785	146	34	(3.5)	931	(84.3)
Midwest	147,067	(8.5)	640	(0.4)	423	141	76	(11.9)	564	(75.0)
South	1,066,534	(61.4)	5,058	(0.5)	3,134	877	1,047	(20.7)	4,011	(78.1)
West	228,040	(13.1)	1,321	(0.6)	890	356	75	(5.7)	1,246	(71.4)
U.S. dependent areas	14,551	(0.8)	165	(1.1)	135	26	4	(2.4)	161	(83.9)
Testing site type										
Health care facilities	1,278,274	(73.6)	5,015	(0.4)	3,232	926	857	(17.1)	4,158	(77.7)
Non-health care facilities	436,304	(25.1)	3,025	(0.7)	2,069	593	363	(12.0)	2,662	(77.7)
Mobile units	16,743	(1)	87	(0.5)	52	24	11	(12.6)	76	(68.4)
Self-testing	3,990	(0.2)	9	(0.2)	6	2	1	(11.1)	8	(75.0)
Unknown	1,539	(0.1)	13	(0.8)	8	1	4	(30.8)	9	(88.9)
Total	1,736,850	(100.0)	8,149	(0.5)	5,367	1,546	1,236	(15.2)	6,913	(77.6)

Data Source: National HIV Prevention Program Monitoring and Evaluation data reported through EvaluationWeb® as of September 15, 2022.

^a Total number of tests includes only tests with negative or positive results; tests with discordant or inconclusive results are excluded.

^b A newly diagnosed HIV-positive test refers to a person who has a current HIV-positive test result (includes unconfirmed preliminary positive rapid tests and confirmed positive tests) and no indication of a previous HIV-positive test.


^c A newly diagnosed person is considered linked to HIV medical care within 30 days if they attended an appointment for HIV medical care within 30 days after diagnosis.

^d Number of persons with newly diagnosed HIV whose test records have valid and complete information on attendance and on date of first appointment for HIV medical care within 30 days after diagnosis. This is the denominator used to calculate the reported percentage.

^e Reported percentages exclude tests without data to calculate the outcome (i.e., invalid, missing, or “Don’t Know”).

^f Data on behaviors that define population groups are collected for all tests performed in non-healthcare settings and for HIV-positive tests in health care settings. Groups are mutually exclusive and based on behaviors reported in the past 12 months under the old (prior to 2018) NHM&E reporting requirements and in the past 5 years under the new NHM&E requirements.

Appendix Table 5. CDC-funded HIV testing and interview for partner services among persons with newly diagnosed HIV infection, 60 jurisdictions in the United States, Puerto Rico, and the U.S. Virgin Islands, 2021



	HIV tests			Interviewed for partner services					
CDC-funded jurisdiction	All HIV tests ^a	Newly diagnosed HIV-positive tests ^b	Newly diagnosed HIV positivity (%)	Interviewed	Not Interviewed	Missing /invalid	Missing /invalid (%)	Denominator for reported percentage ^c	Reported percentage ^d (%)
Alabama	60,250	323	(0.5)	221	98	4	(1.2)	319	(69.3)

	HIV tests			Interviewed for partner services					
CDC-funded jurisdiction	All HIV tests ^a	Newly diagnosed HIV-positive tests ^b	Newly diagnosed HIV positivity (%)	Interviewed	Not Interviewed	Missing /invalid	Missing /invalid (%)	Denominator for reported percentage ^c	Reported percentage ^d (%)
Alaska	426	2	(0.5)	2	0	0	0.0	2	(100.0)
Arizona	59,817	238	(0.4)	196	25	17	(7.1)	221	(88.7)
Arkansas	22,091	24	(0.1)	20	3	1	(4.2)	23	(87.0)
California									
Los Angeles	54,816	389	(0.7)	7	20	362	(93.1)	27	(25.9)
San Francisco	22,947	128	(0.6)	72	56	0	0.0	128	(56.3)
California (excludes Los Angeles and San Francisco)	26,836	234	(0.9)	100	59	75	(32.1)	159	(62.9)
Colorado	7,213	64	(0.9)	60	2	2	(3.1)	62	(96.8)
Connecticut	77,201	109	(0.1)	107	2	0	0.0	109	(98.2)
Delaware	4,754	15	(0.3)	13	2	0	0.0	15	(86.7)
District of Columbia	15,104	114	(0.8)	33	60	21	(18.4)	93	(35.5)
Florida	215,778	1,261	(0.6)	670	32	559	(44.3)	702	(95.4)
Georgia	86,171	694	(0.8)	164	141	389	(56.1)	305	(53.8)
Hawaii	1,717	10	(0.6)	10	0	0	0.0	10	(100.0)
Idaho	6,047	11	(0.2)	11	0	0	0.0	11	(100.0)
Illinois									
Chicago	6,479	33	(0.5)	8	3	22	(66.7)	11	(72.7)
Illinois (excludes Chicago)	38,423	23	(0.1)	23	0	0	0.0	23	(100.0)
Indiana	16,635	80	(0.5)	43	24	13	(16.3)	67	(64.2)
Iowa	8,128	29	(0.4)	24	5	0	0.0	29	(82.8)
Kansas	14,382	40	(0.3)	38	2	0	0.0	40	(95.0)
Kentucky	14,291	33	(0.2)	27	3	3	(9.1)	30	(90.0)
Louisiana	91,510	245	(0.3)	136	0	109	(44.5)	136	(100.0)
Maine	1,117	6	(0.5)	5	1	0	0.0	6	(83.3)
Maryland									
Baltimore	25,774	49	(0.2)	37	7	5	(10.2)	44	(84.1)
Maryland (excludes Baltimore)	21,468	26	(0.1)	5	18	3	(11.5)	23	(21.7)
Massachusetts	39,124	90	(0.2)	48	34	8	(8.9)	82	(58.5)
Michigan	22,908	149	(0.7)	104	39	6	(4.0)	143	(72.7)
Minnesota	3,558	10	(0.3)	2	4	4	(40.0)	6	(33.3)
Mississippi	28,214	122	(0.4)	102	9	11	(9.0)	111	(91.9)
Missouri	11,707	77	(0.7)	59	5	13	(16.9)	64	(92.2)
Montana	1,565	0	—	—	—	—	—	—	—
Nebraska	4,274	16	(0.4)	10	6	0	0.0	16	(62.5)
Nevada	18,633	132	(0.7)	112	12	8	(6.1)	124	(90.3)
New Hampshire	430	0	—	—	—	—	—	—	—
New Jersey	33,046	234	(0.7)	152	55	27	(11.5)	207	(73.4)
New Mexico	6,048	32	(0.5)	24	8	0	0.0	32	(75.0)
New York									

	HIV tests			Interviewed for partner services					
CDC-funded jurisdiction	All HIV tests ^a	Newly diagnosed HIV-positive tests ^b	Newly diagnosed HIV positivity (%)	Interviewed	Not Interviewed	Missing /invalid	Missing /invalid (%)	Denominator for reported percentage ^c	Reported percentage ^d (%)
New York City	35,392	154	(0.4)	78	52	24	(15.6)	130	(60.0)
New York (excludes New York City)	14,526	108	(0.7)	39	9	60	(55.6)	48	(81.3)
North Carolina	23,427	70	(0.3)	53	14	3	(4.3)	67	(79.1)
North Dakota	3,962	6	(0.2)	6	0	0	0.0	6	(100.0)
Ohio	7,209	145	(2.0)	101	31	13	(9.0)	132	(76.5)
Oklahoma	4,171	17	(0.4)	0	0	17	(100.0)	0	—
Oregon	7,146	33	(0.5)	28	3	2	(6.1)	31	(90.3)
Pennsylvania									
Pennsylvania (excludes Philadelphia)	51,168	143	(0.3)	131	12	0	0.0	143	(91.6)
Philadelphia	27,424	119	(0.4)	38	56	25	(21.0)	94	(40.4)
Rhode Island	1,201	2	(0.2)	2	0	0	0.0	2	(100.0)
South Carolina	60,124	274	(0.5)	105	57	112	(40.9)	162	(64.8)
South Dakota	973	3	(0.3)	3	0	0	0.0	3	(100.0)
Tennessee	63,275	499	(0.8)	132	6	361	(72.3)	138	(95.7)
Texas									
Houston	72,876	326	(0.4)	4	1	321	(98.5)	5	(80.0)
Texas (excludes Houston)	227,018	841	(0.4)	400	363	78	(9.3)	763	(52.4)
Utah	1,716	7	(0.4)	6	1	0	0.0	7	(85.7)
Vermont	29	0	—	—	—	—	—	—	—
Virginia	26,750	119	(0.4)	99	7	13	(10.9)	106	(93.4)
Washington	10,080	40	(0.4)	26	10	4	(10.0)	36	(72.2)
West Virginia	3,488	6	(0.2)	1	0	5	(83.3)	1	(100.0)
Wisconsin	8,429	29	(0.3)	20	8	1	(3.4)	28	(71.4)
Wyoming	3,033	1	0.0	1	0	0	0.0	1	(100.0)
Puerto Rico	13,293	150	(1.1)	123	17	10	(6.7)	140	(87.9)
U.S. Virgin Islands	1,258	15	(1.2)	10	3	2	(13.3)	13	(76.9)
Total	1,736,850	8,149	(0.5)	4,051	1,385	2,713	(33.3)	5,436	(74.5)

Data Source: National HIV Prevention Program Monitoring and Evaluation data reported through EvaluationWeb® as of September 15, 2022.

^a Total number of tests includes only tests with negative or positive results; tests with discordant or inconclusive results are excluded.

^b A newly diagnosed HIV-positive test refers to a person who has a current HIV-positive test result (includes unconfirmed preliminary positive rapid tests and confirmed positive tests) and no indication of a previous HIV-positive test.

^c Number of persons with newly diagnosed HIV infection whose test records have valid and complete information on interview for Partner Services. This is the denominator used to calculate the reported percentage.

^d Reported percentages exclude tests without data to calculate the outcome (i.e., invalid, missing, or “Don’t Know”).

Appendix Table 6. CDC-funded HIV testing and linkage to HIV medical care among persons with previously diagnosed HIV infection not in HIV medical care, 60 jurisdictions in the United States, Puerto Rico, and the U.S. Virgin Islands, 2021

	HIV tests			Linkage to HIV Medical Care in 30 days ^d					
CDC-funded jurisdiction	All HIV tests ^a	Previously diagnosed HIV-positive tests ^b	Previously diagnosed HIV-positive tests not in care ^c	Linked	Not linked	Missing /invalid	Missing /invalid (%)	Denominator for report percentage ^e	Reported Percentage ^f (%)
Alabama	60,250	397	220	46	167	7	(3.2)	213	(21.6)
Alaska	426	1	0	0	0	0	—	0	—
Arizona	59,817	146	67	37	29	1	(1.5)	66	(56.1)
Arkansas	22,091	31	6	0	6	0	0.0	6	0.0
California									
Los Angeles	54,816	357	104	63	27	14	(13.5)	90	(70.0)
San Francisco	22,947	552	118	17	100	1	(0.8)	117	(14.5)
California (excludes Los Angeles and San Francisco)	26,836	139	64	51	7	6	(9.4)	58	(87.9)
Colorado	7,213	11	2	1	1	0	0.0	2	(50.0)
Connecticut	77,201	20	16	13	3	0	0.0	16	(81.3)
Delaware	4,754	12	6	3	3	0	0.0	6	(50.0)
District of Columbia	15,104	92	12	5	6	1	(8.3)	11	(45.5)
Florida	215,778	1,644	14	10	1	3	(21.4)	11	(90.9)
Georgia	86,171	265	204	132	43	29	(14.2)	175	(75.4)
Hawaii	1,717	2	0	0	0	0	—	0	—
Idaho	6,047	2	0	0	0	0	—	0	—
Illinois									
Chicago	6,479	28	6	2	3	1	(16.7)	5	(40.0)
Illinois (excludes Chicago)	38,423	10	2	2	0	0	0.0	2	(100.0)
Indiana	16,635	15	2	0	1	1	(50.0)	1	0.0
Iowa	8,128	5	0	0	0	0	—	0	—
Kansas	14,382	12	0	0	0	0	—	0	—
Kentucky	14,291	40	13	7	5	1	(7.7)	12	(58.3)
Louisiana	91,510	681	5	5	0	0	0.0	5	(100.0)
Maine	1,117	1	1	0	1	0	0.0	1	0.0
Maryland									
Baltimore	25,774	225	0	0	0	0	—	0	—
Maryland (excludes Baltimore)	21,468	30	9	4	1	4	(44.4)	5	(80.0)
Massachusetts	39,124	439	263	112	145	6	(2.3)	257	(43.6)
Michigan	22,908	56	21	11	10	0	0.0	21	(52.4)
Minnesota	3,558	10	0	0	0	0	—	0	—
Mississippi	28,214	59	4	4	0	0	0.0	4	(100.0)
Missouri	11,707	55	2	1	0	1	(50.0)	1	(100.0)
Montana	1,565	0	—	—	—	—	—	—	—
Nebraska	4,274	6	0	0	0	0	—	0	—
Nevada	18,633	136	31	23	7	1	(3.2)	30	(76.7)
New Hampshire	430	0	—	—	—	—	—	—	—
New Jersey	33,046	247	80	62	15	3	(3.8)	77	(80.5)
New Mexico	6,048	6	4	1	3	0	0.0	4	(25.0)
New York									

	HIV tests			Linkage to HIV Medical Care in 30 days ^d					
CDC-funded jurisdiction	All HIV tests ^a	Previously diagnosed HIV-positive tests ^b	Previously diagnosed HIV-positive tests not in care ^c	Linked	Not linked	Missing /invalid	Missing /invalid (%)	Denominator for report percentage ^e	Reported Percentage ^f (%)
New York City	35,392	200	111	94	9	8	(7.2)	103	(91.3)
New York (excludes New York City)	14,526	232	30	27	3	0	0.0	30	(90.0)
North Carolina	23,427	102	30	10	20	0	0.0	30	(33.3)
North Dakota	3,962	1	1	1	0	0	0.0	1	(100.0)
Ohio	7,209	30	18	16	1	1	(5.6)	17	(94.1)
Oklahoma	4,171	4	4	4	0	0	0.0	4	(100.0)
Oregon	7,146	24	5	2	3	0	0.0	5	(40.0)
Pennsylvania									
Pennsylvania (excludes Philadelphia)	51,168	262	112	34	78	0	0.0	112	(30.4)
Philadelphia	27,424	160	69	43	26	0	0.0	69	(62.3)
Rhode Island	1,201	5	1	0	1	0	0.0	1	0.0
South Carolina	60,124	87	34	24	10	0	0.0	34	(70.6)
South Dakota	973	0	—	—	—	—	—	—	—
Tennessee	63,275	259	52	24	19	9	(17.3)	43	(55.8)
Texas									
Houston	72,876	667	192	56	26	110	(57.3)	82	(68.3)
Texas (excludes Houston)	227,018	1,168	259	145	113	1	(0.4)	258	(56.2)
Utah	1,716	2	0	0	0	0	—	0	—
Vermont	29	0	—	—	—	—	—	—	—
Virginia	26,750	73	16	10	5	1	(6.3)	15	(66.7)
Washington	10,080	15	5	4	1	0	0.0	5	(80.0)
West Virginia	3,488	9	1	0	0	1	(100.0)	0	—
Wisconsin	8,429	7	5	5	0	0	0.0	5	(100.0)
Wyoming	3,033	0	—	—	—	—	—	—	—
Puerto Rico	13,293	75	26	23	2	1	(3.8)	25	(92.0)
U.S. Virgin Islands	1,258	9	3	3	0	0	0.0	3	(100.0)
Total	1,736,850	9,123	2,250	1,137	901	212	(9.4)	2,038	(55.8)

Data Source: National HIV Prevention Program Monitoring and Evaluation data reported through EvaluationWeb® as of September 15, 2022.

^a Total number of tests includes tests with negative or positive results; tests with discordant or inconclusive results are excluded.

^b A previously diagnosed HIV-positive test is a test on a client who was previously reported to the HIV surveillance system or who reports a previous positive HIV tests or evidence of a previous positive tests found on review of other data sources.

^c Excludes persons already in HIV medical care.

^d A previously diagnosed person is considered linked to HIV medical care within 30 days if they attended an appointment for HIV medical care within 30 days after the current positive HIV test.

^e Number of persons with previously diagnosed HIV whose test records have valid and complete information on attendance and date of first appointment for HIV medical care within 30 days after the current HIV positive test. This is the denominator used to calculate the reported percentage.

^f Reported percentages exclude tests without data to calculate the outcome (i.e., invalid, missing, or “Don’t Know”).