

# COVID Data Tracker

Maps, charts, and data provided by CDC, updates Mon-Fri by 8 pm ET

[COVID-19 Home](#) >



CDC recommends use of [COVID-19 Community Levels](#) to determine the impact of COVID-19 on communities and to take [action](#). CDC also provides [Transmission Levels](#) (also known as Community Transmission) to describe the amount of COVID-19 spread within each county. Healthcare facilities use Transmission Levels to determine [infection control](#) interventions.

United States At a Glance

Cases Total  
**104,445,294**  
Case Trends

Deaths Total  
**1,129,573**  
Death Trends

Current Hosp.  
**10,638**  
Admission Trends

16.7% of People with  
Updated Booster Dose

[CLICK TO VIEW OTHER PAGES:](#)

Health Care Settings



[< Back to Health Care Settings](#)

## COVID-NET Laboratory-confirmed COVID-19 hospitalizations

COVID-NET is a population-based surveillance system that collects data on laboratory-confirmed COVID-19-associated hospitalizations among children and adults. The current network is comprised of over 300 acute-care hospitals in 13 states. Hospitalization rates are updated weekly. COVID-NET also provides important clinical information on COVID-19-associated hospitalizations, including age group, sex, race/ethnicity, and underlying health conditions.

For more information about COVID-NET, please see <https://www.cdc.gov/coronavirus/2019-ncov/covid-data/covid-net/purpose-methods.html>

### Rates of COVID-19-Associated Hospitalization

Preliminary weekly rates as of Apr 15, 2023

Display by Weekly Rate

View Rate by

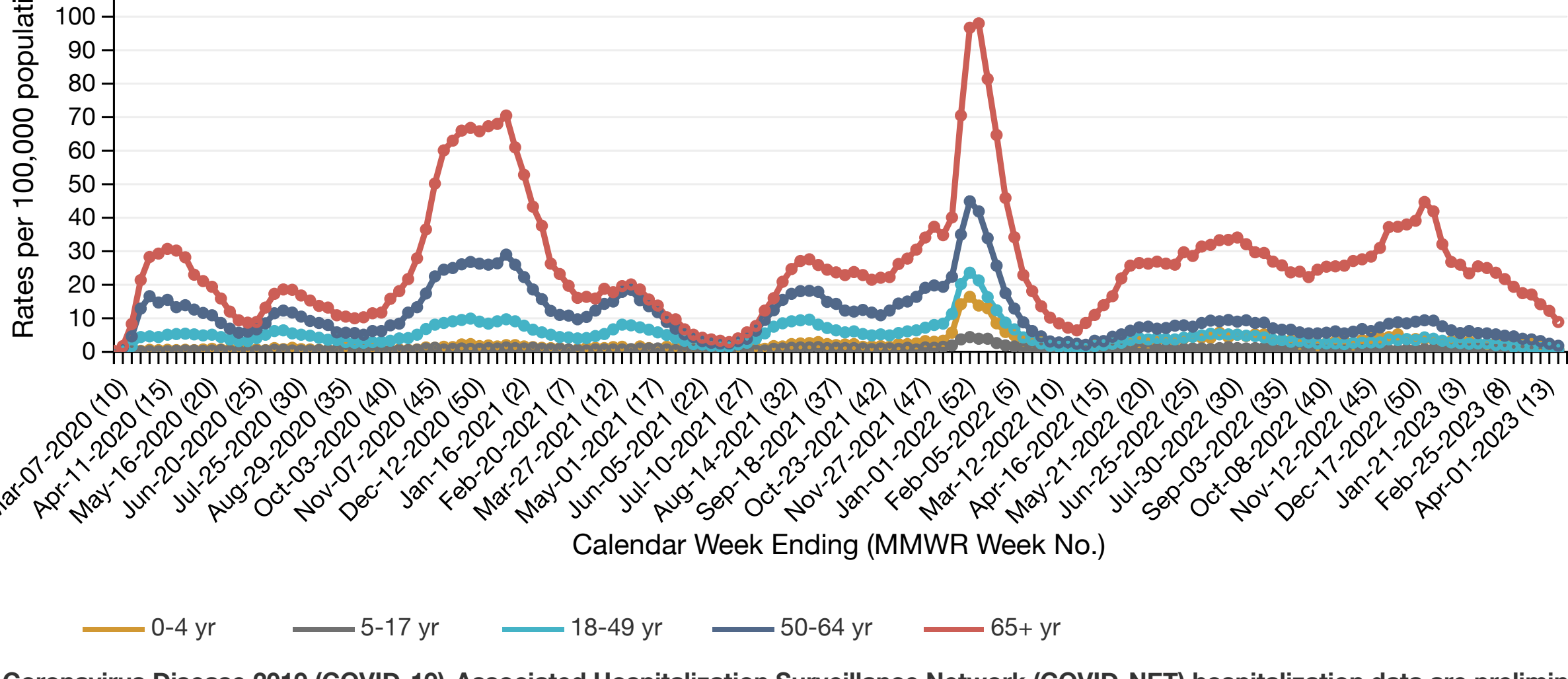
Age Group

Choose Age Group



#### COVID-NET :: Entire Network :: 2020-22 :: Weekly Rate

To zoom, hold down Alt key and click and drag to create a rectangle. Double click to reset zoom.



The Coronavirus Disease 2019 (COVID-19)-Associated Hospitalization Surveillance Network (COVID-NET) hospitalization data are preliminary and subject to change as more data become available. In particular, case counts and rates for recent hospital admissions are subject to lag. Lag for COVID-NET case identification and reporting might increase around holidays or during periods of increased hospital utilization. As data are received each week, prior case counts and rates are updated accordingly. COVID-NET conducts population-based surveillance for laboratory-confirmed COVID-19-associated hospitalizations in children (less than 18 years of age) and adults. COVID-NET covers nearly 100 counties in the 10 Emerging Infections Program (EIP) states (CA, CO, CT, GA, MD, MN, NM, NY, OR, TN) and four Influenza Hospitalization Surveillance Project (IHSP) states (IA [March 2020-May 2022], MI, OH, and UT). Incidence rates (per 100,000 population) are calculated using the National Center for Health Statistics' (NCHS) vintage 2020 bridged-race postcensal population estimates for the counties included in the surveillance catchment area. The rates provided are likely to be underestimated as COVID-19 hospitalizations might be missed due to test availability and provider or facility testing practices. The NCHS bridged-race data used for the denominator for race data provides population data for children ages 0–1 year. To calculate rates of hospitalization among children ages <6 months and 6 months to <12 months, the population for children ages 0–1 year is halved.

Starting MMWR week 22 of 2022, IA data are removed from weekly rate calculations.

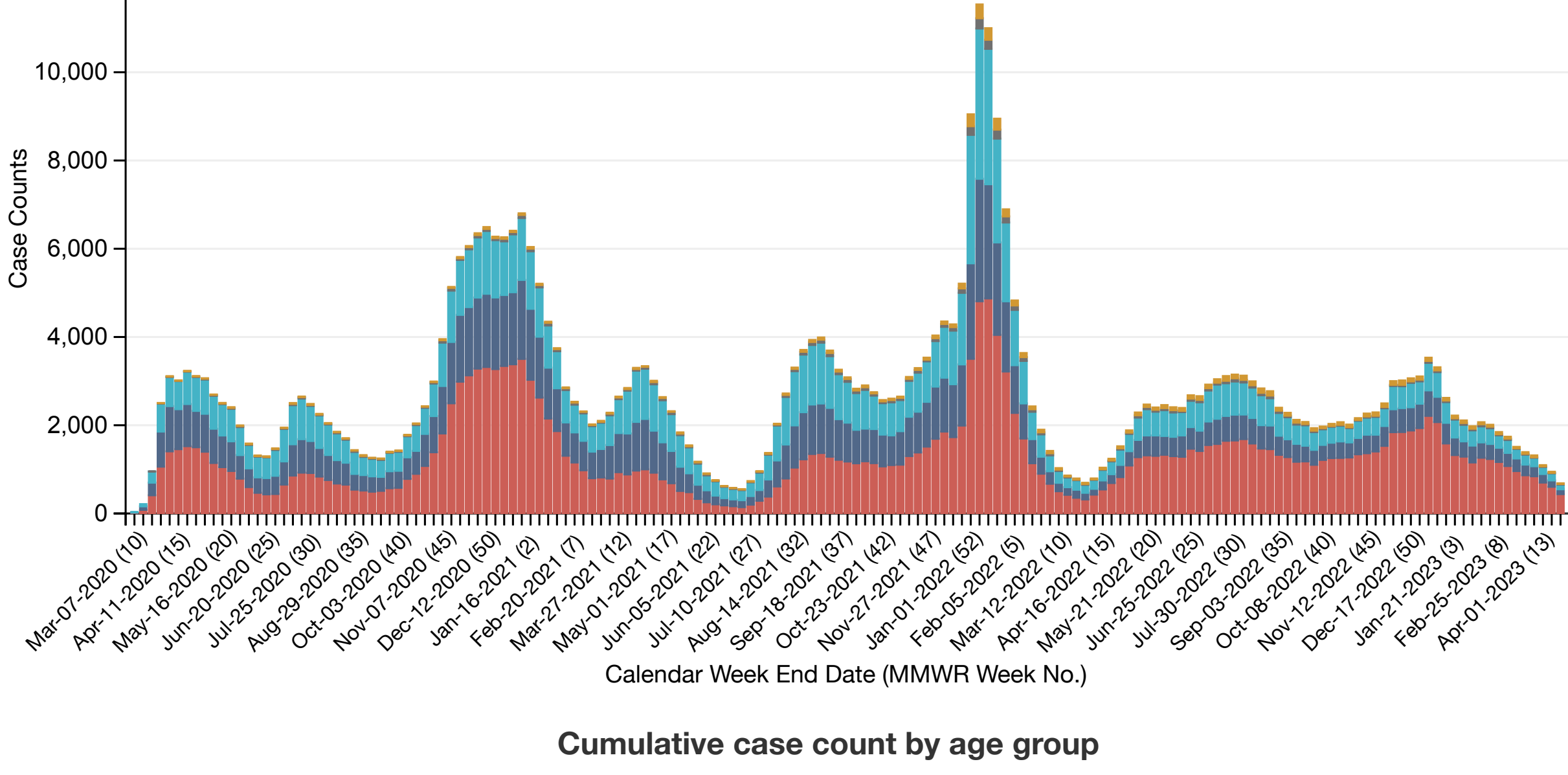
[View Complete Application](#) | [Download Data](#) | [Download Image](#)

### Preliminary data as of Apr 15, 2023

COVID-19-Associated Hospitalizations by Age

Display: ☒ Number ☐ Percent ?

☒ 0-4 yr ☒ 5-17 yr ☒ 18-49 yr ☒ 50-64 yr ☒ 65+ yr



#### Cumulative case count by age group

	0-4 yr	5-17 yr	18-49 yr	50-64 yr	65+ yr	Total
2020-23	7300	6731	117036	111263	210837	453167

The Coronavirus Disease 2019 (COVID-19)-Associated Hospitalization Surveillance Network (COVID-NET) hospitalization data are preliminary and subject to change as more data become available. In particular, case counts and rates for recent hospital admissions are subject to lag. Lag for COVID-NET case identification and reporting might increase around holidays or during periods of increased hospital utilization. As data are received each week, prior case counts and rates are updated accordingly.

[View COVID-NET Interactive](#) | [Download Data](#) | [Download Image](#)

Additional data on disease severity among hospitalized COVID-19 patients from other sources are available [here](#).

### Characteristics of COVID-19-Associated Hospitalizations

Includes data from March 1, 2020 – January 31, 2023

Display by Major Category

Interventions/outcomes

and Sub-Category

Intensive care unit

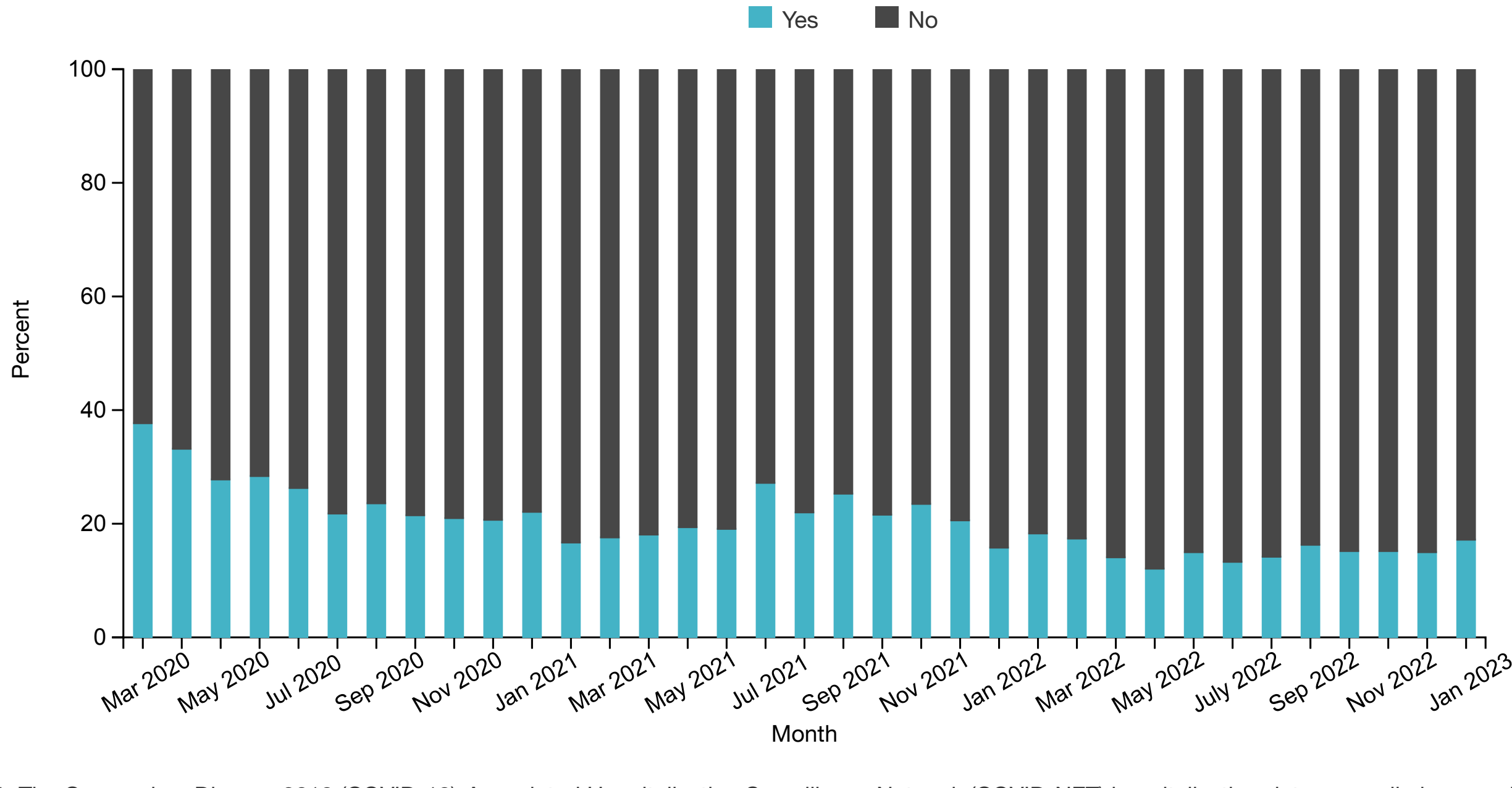
stratified by

Month



#### Intensive care unit by Month

☒ Yes ☒ No



- The Coronavirus Disease 2019 (COVID-19)-Associated Hospitalization Surveillance Network (COVID-NET) hospitalization data are preliminary and subject to change as more data become available. In particular, case counts and rates for recent hospital admissions are subject to lag. Lag for COVID-NET case identification and reporting might increase around holidays or during periods of increased hospital utilization. As data are received each week, prior case counts and rates are updated accordingly.
- White, Black, Asian/Pacific Islander and American Indian/Alaska Native all represent non-Hispanic ethnicity groups; Other includes persons in multiple race categories and persons for whom race is unknown.
- All data presented, including demographics (age, sex, race and ethnicity), interventions and outcomes, underlying medical conditions, signs/symptoms at admission and discharge diagnoses are restricted to sampled and completed cases with non-missing data reported during March 1, 2020 – January 31, 2023. Due to the sampling methodology for adults aged ≥18 years, counts and unweighted percentages are only presented for demographic data. Weighted percentages are presented for intensive care unit admission, mechanical ventilation, in-hospital death, underlying medical conditions, signs/symptoms at admission, and discharge diagnoses. MD did not contribute data between December 2021 and June 2022.

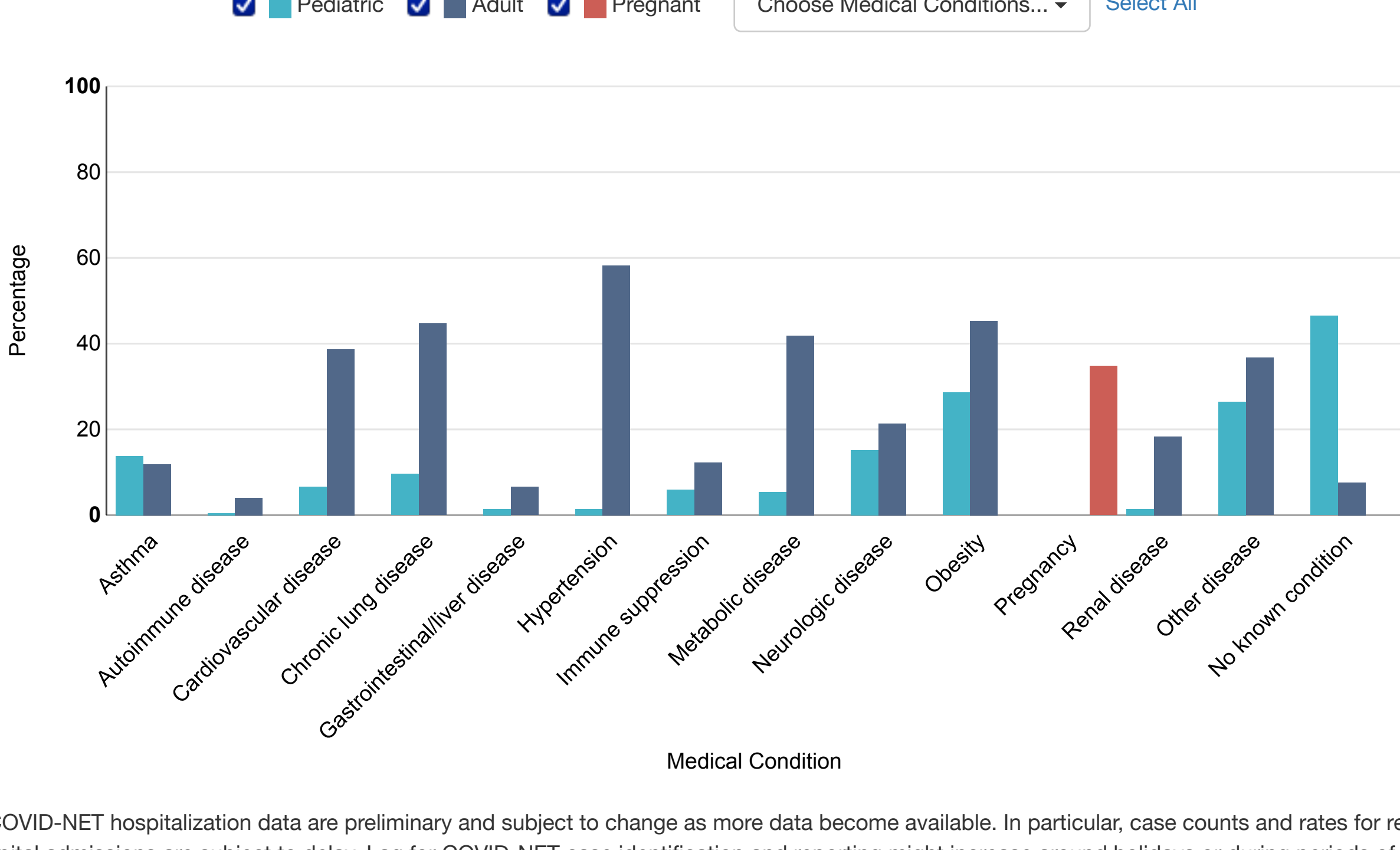
[View COVID-NET Interactive](#) | [Download Data](#) | [Download Image](#)

### Selected Underlying Medical Conditions

Includes data from March 1, 2020 – January 31, 2023

Display data: ☐ Horizontally ☒ Vertically ?

☒ Pediatric ☒ Adult ☒ Pregnant Choose Medical Conditions... Select All



- COVID-NET hospitalization data are preliminary and subject to change as more data become available. In particular, case counts and rates for recent hospital admissions are subject to delay. Lag for COVID-NET case identification and reporting might increase around holidays or during periods of increased hospital utilization. As data are received each week, prior case counts and rates are updated accordingly.
- Data are restricted to cases reported during March 1, 2020 – January 31, 2023, due to delays in reporting. During this time frame, sampling was conducted among hospitalized adults aged ≥18 years; therefore, counts are not shown, and weighted percentages are reported. The denominator for percentages among adults includes sampled cases with data on these conditions. No sampling was conducted among hospitalized children; therefore, the denominator for percentages of underlying medical conditions among children includes all pediatric cases with data on these conditions. Underlying medical conditions among pregnant women are included when "Adults" and/or "Pediatrics" is selected. MD did not contribute data between December 2021 and June 2022.

[View COVID-NET Interactive](#) | [Download Data](#) | [Download Image](#)

## COVID Data Tracker

## Weekly Review

Sign up to receive the COVID Data Tracker Weekly Review.

Email Address:

Email Address

Submit

[What's this?](#)

### Cite COVID Data Tracker

Centers for Disease Control and Prevention.  
COVID Data Tracker. Atlanta, GA: US Department of Health and Human Services, CDC; 2023, April 21. <https://covid.cdc.gov/covid-data-tracker>


### COVID-19 Home >

All COVID-19 topics including prevention, travel, work, and school

#### HAVE QUESTIONS?

 Visit CDC-INFO

 Call 800-232-4636

 Email CDC-INFO

 Open 24/7

#### CDC INFORMATION

About CDC

Jobs

Funding

Policies

File Viewers & Players

#### Privacy

FOIA

No Fear Act

OIG

Nondiscrimination

Accessibility

#### CONNECT WITH CDC







