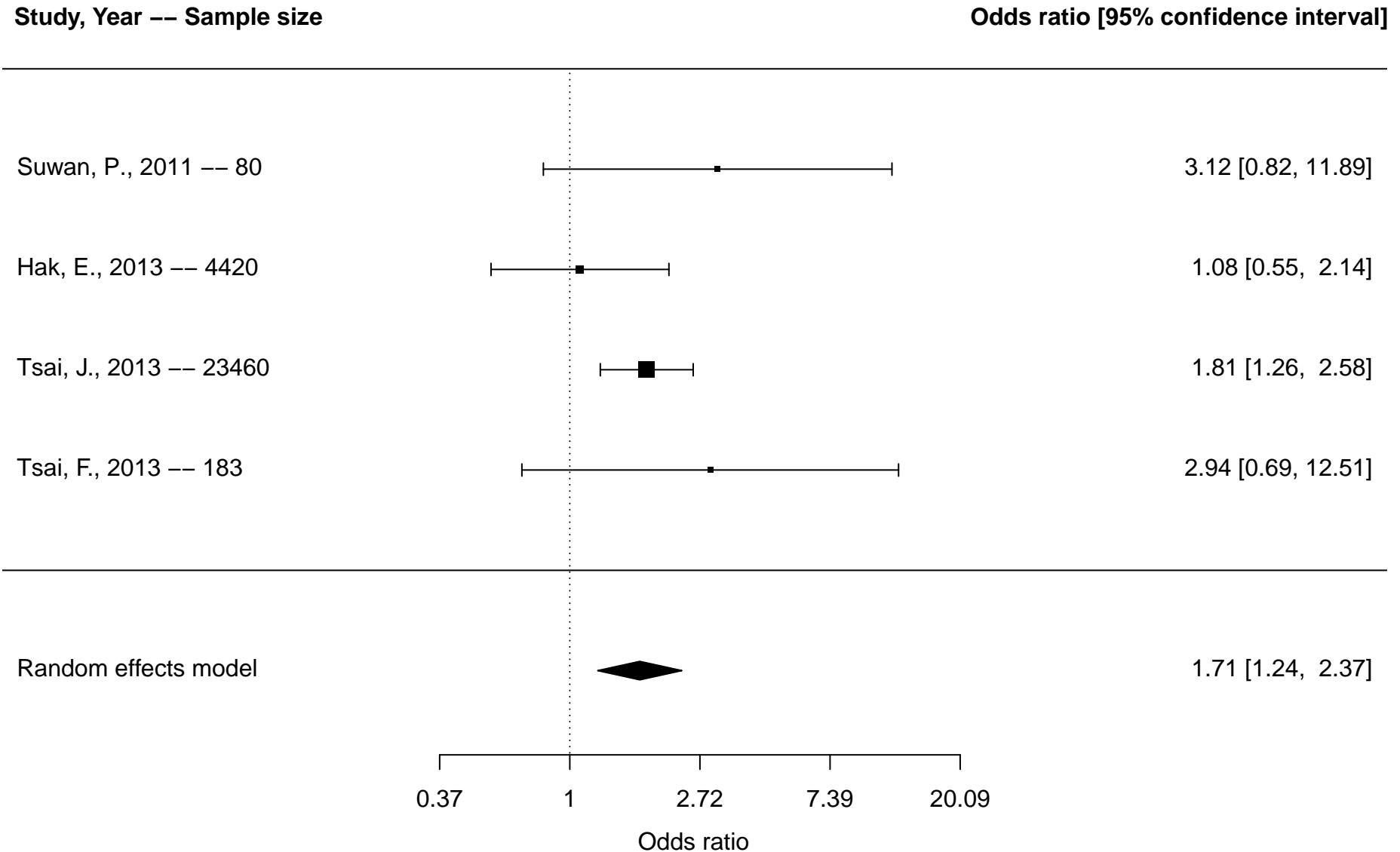


Table of Contents: Supplemental Forest plots of meta-analyses on the associations between parenting factors and ADHD

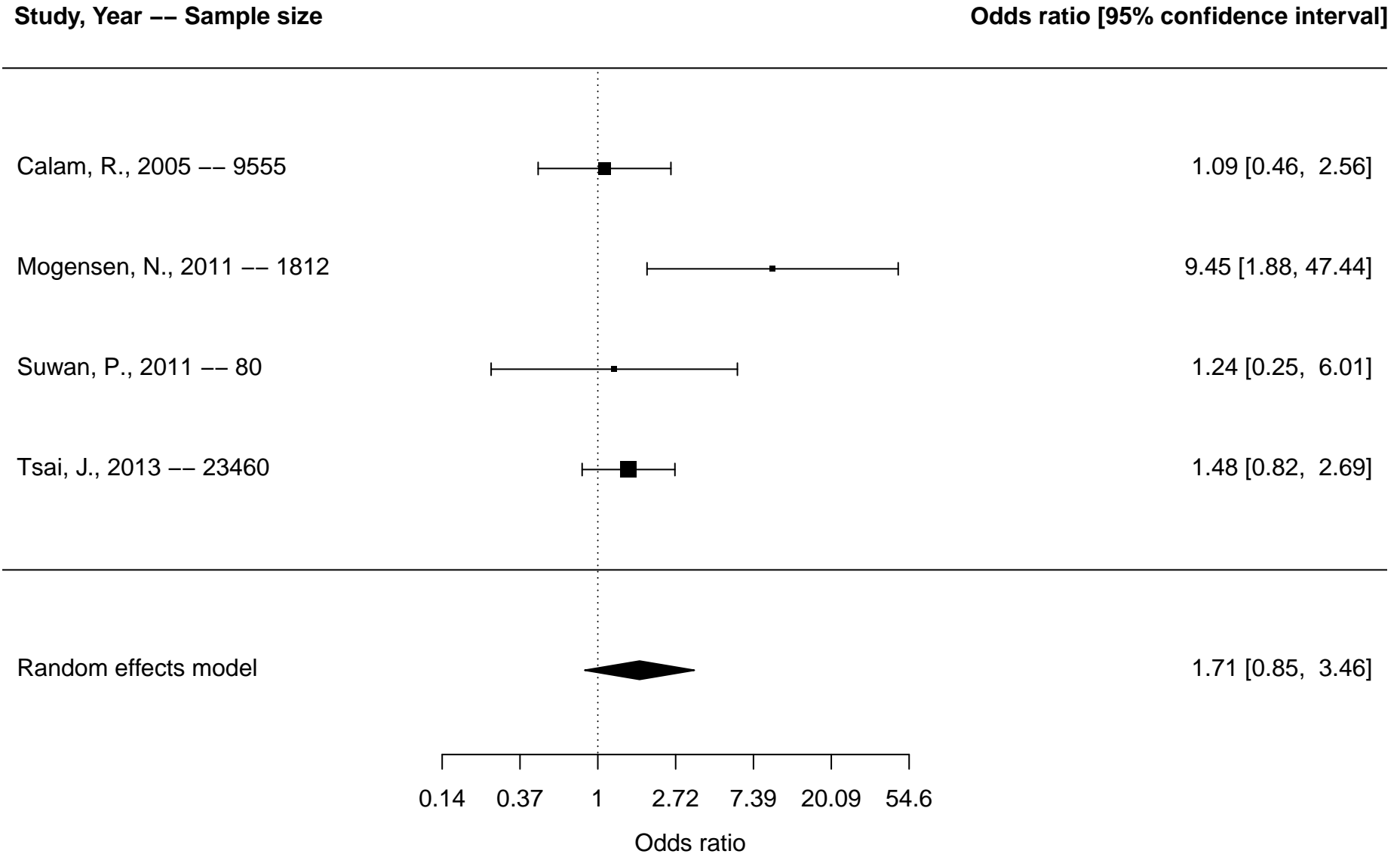
Figure S1. Allergies and ADHD overall, dichotomous outcomes	2
Figure S2. Asthma and ADHD overall, dichotomous outcomes	3
Figure S3. Asthma and ADHD overall, continuous outcomes	4
Figure S4. Asthma and hyperactivity/impulsivity, continuous outcomes	5
Figure S5. Eczema and ADHD overall, dichotomous outcomes	6
Figure S6. Infections and ADHD overall, dichotomous outcomes	7
Figure S7. Infections and ADHD overall, continuous outcomes	8
Figure S8. Infections and ADHD diagnosis, dichotomous outcomes	9
Figure S9. Infections and hyperactivity/impulsivity, dichotomous outcomes	10
Figure S10. Head injury vs. other injuries and ADHD overall, dichotomous outcomes	11
Figure S11. Head injury vs. other injuries and ADHD overall, continuous outcomes	12
Figure S12. Head injury vs. other injuries and ADHD diagnosis, dichotomous outcomes	13
Figure S13. Head injury vs. other injuries and inattention, continuous outcomes	14
Figure S14. Head injury vs. other injuries and hyperactivity/impulsivity, continuous outcomes	15
Figure S15. Head injury vs. normal controls and ADHD overall, dichotomous outcomes	16
Figure S16. Head injury vs. normal controls and ADHD overall, continuous outcomes	17
Figure S17. Head injury vs. normal controls and ADHD diagnosis, dichotomous outcomes	18
Figure S18. Head injury vs. normal controls and inattention, continuous outcomes	19
Figure S19. Head injury vs. normal controls and hyperactivity/impulsivity, continuous outcomes	20
Figure S20. Sleep problems and ADHD overall, dichotomous outcomes	21
Figure S21. Sleep problems and ADHD overall, continuous outcomes	22
Figure S22. Sleep problems and inattention, continuous outcomes	23
Figure S23. Sleep problems and hyperactivity/impulsivity, continuous outcomes	24

Figure S1. Forest plot of meta-analysis of allergies and attention-deficit/hyperactivity disorder (ADHD) overall* based on studies reporting dichotomous outcomes



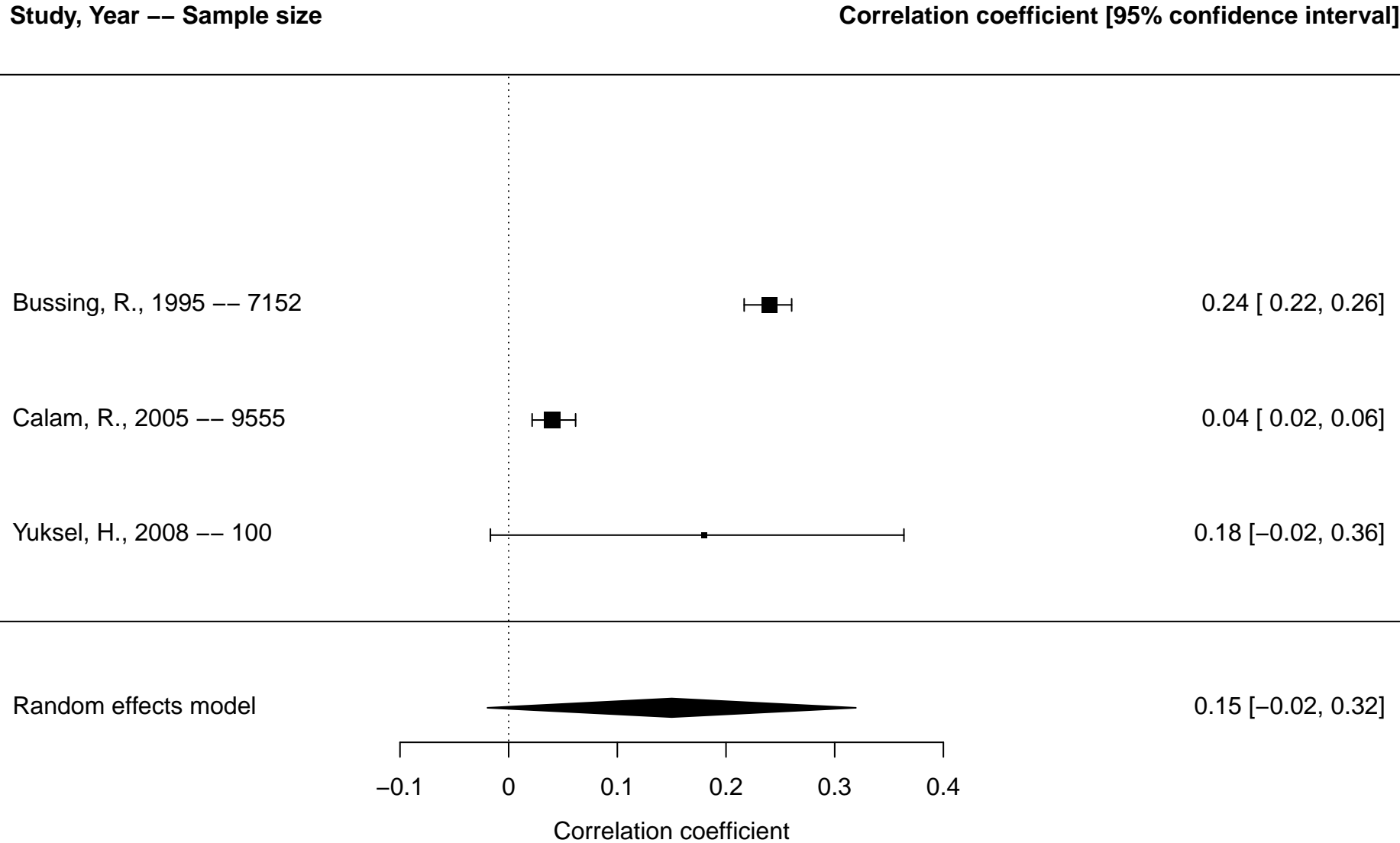
*Overall includes studies reporting on any included ADHD outcomes (diagnosis, ADHD symptoms, inattention, hyperactivity/impulsivity)

Figure S2. Forest plot of meta-analysis of asthma and attention-deficit/hyperactivity disorder (ADHD) overall* based on studies reporting dichotomous outcomes



*Overall includes studies reporting on any included ADHD outcomes (diagnosis, ADHD symptoms, inattention, hyperactivity/impulsivity)

Figure S3. Forest plot of meta-analysis of asthma and attention-deficit/hyperactivity disorder (ADHD) overall* based on studies reporting continuous outcomes



*Overall includes studies reporting on any included ADHD outcomes (diagnosis, ADHD symptoms, inattention, hyperactivity/impulsivity)

Figure S4. Forest plot of meta-analysis of asthma and hyperactivity/impulsivity based on studies reporting continuous outcomes

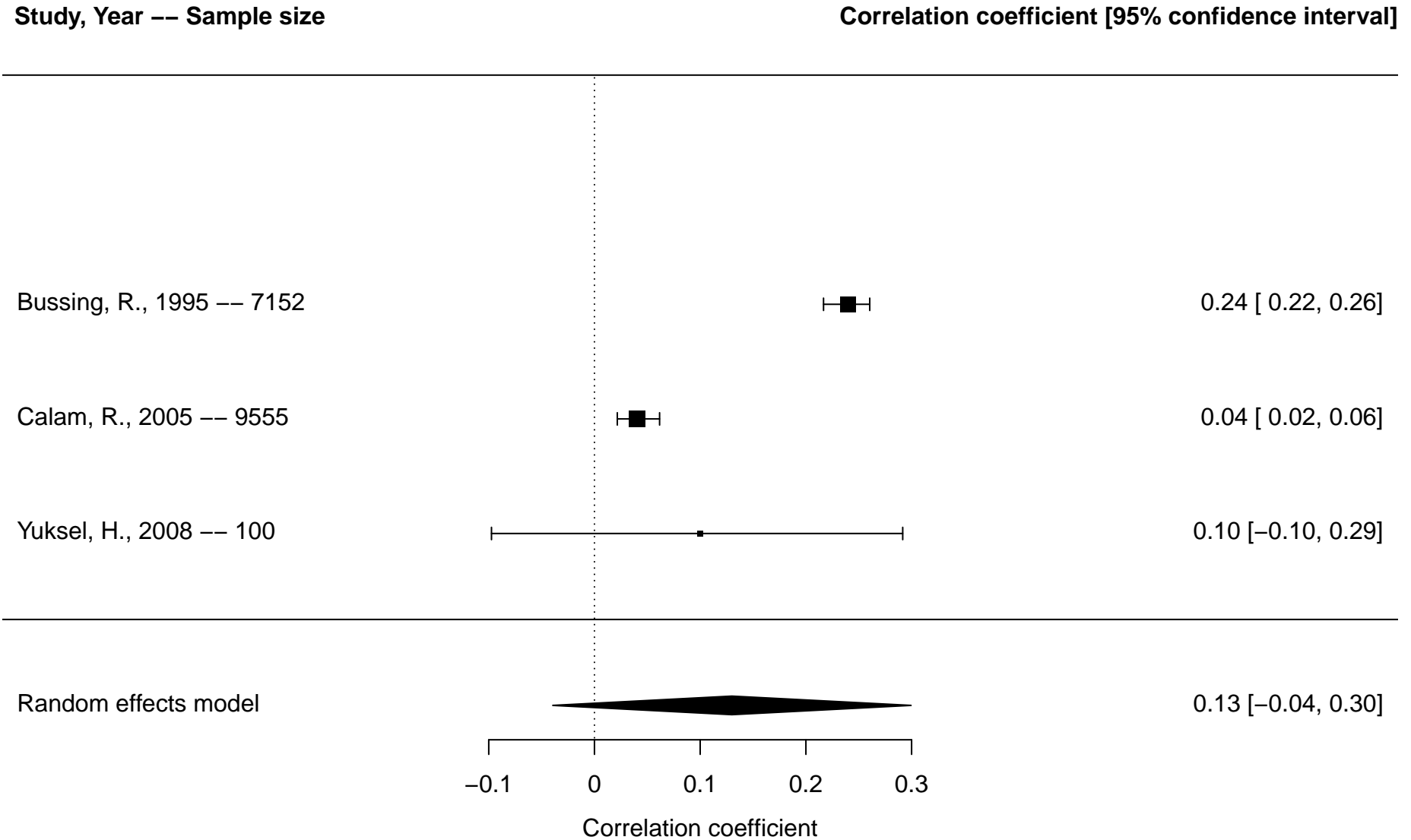
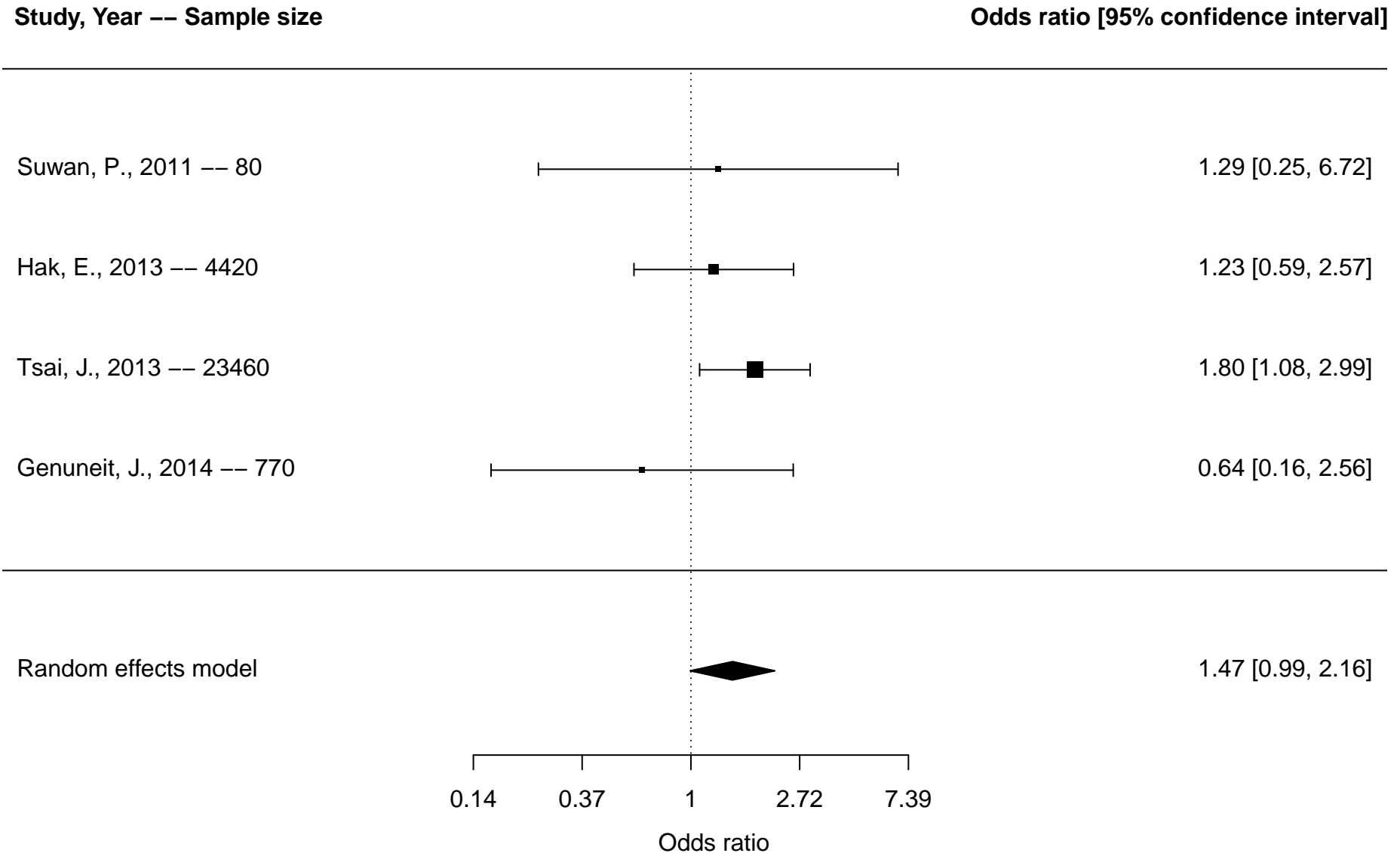
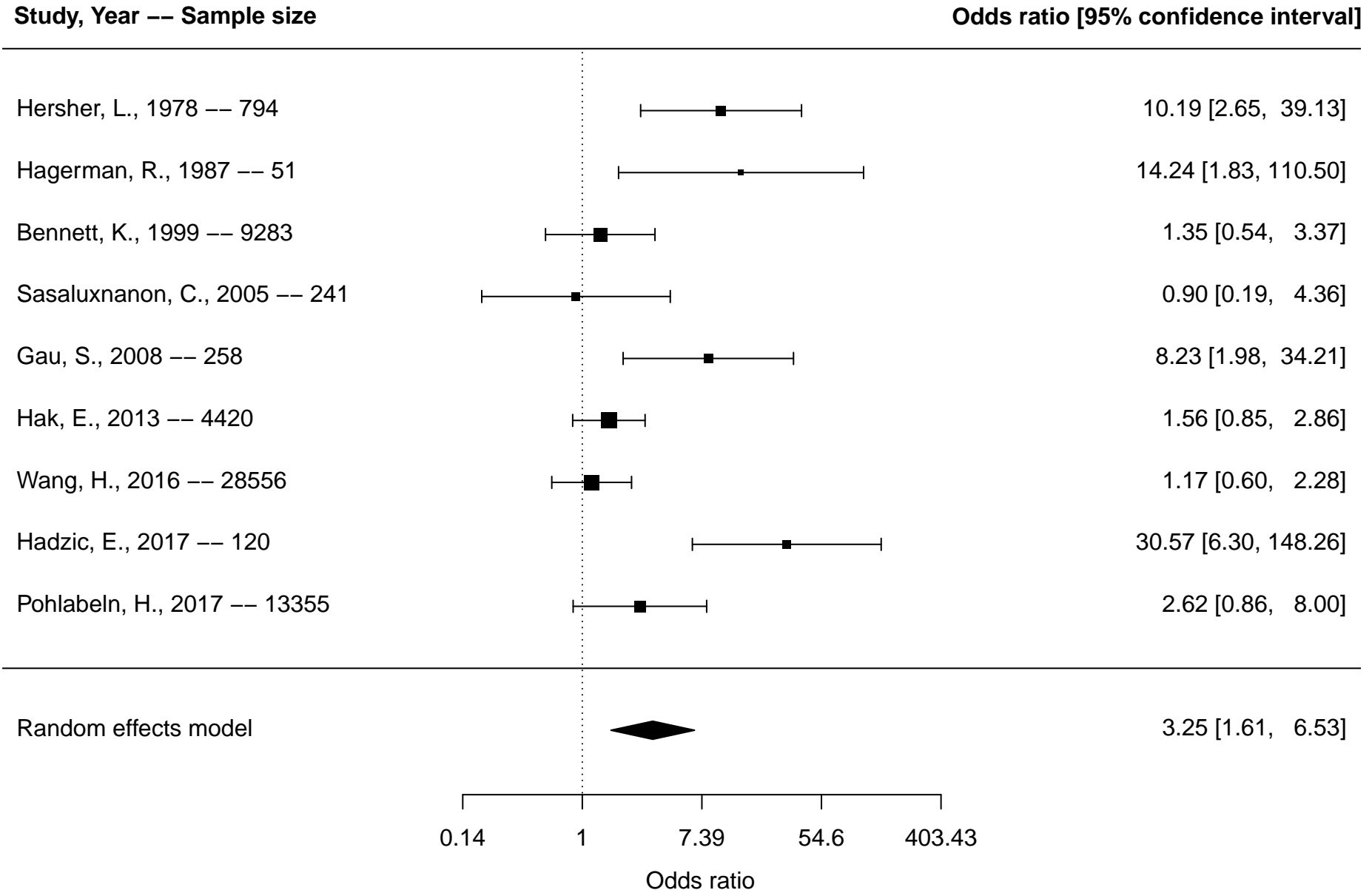


Figure S5. Forest plot of meta-analysis of eczema and attention-deficit/hyperactivity disorder (ADHD) overall* based on studies reporting dichotomous outcomes



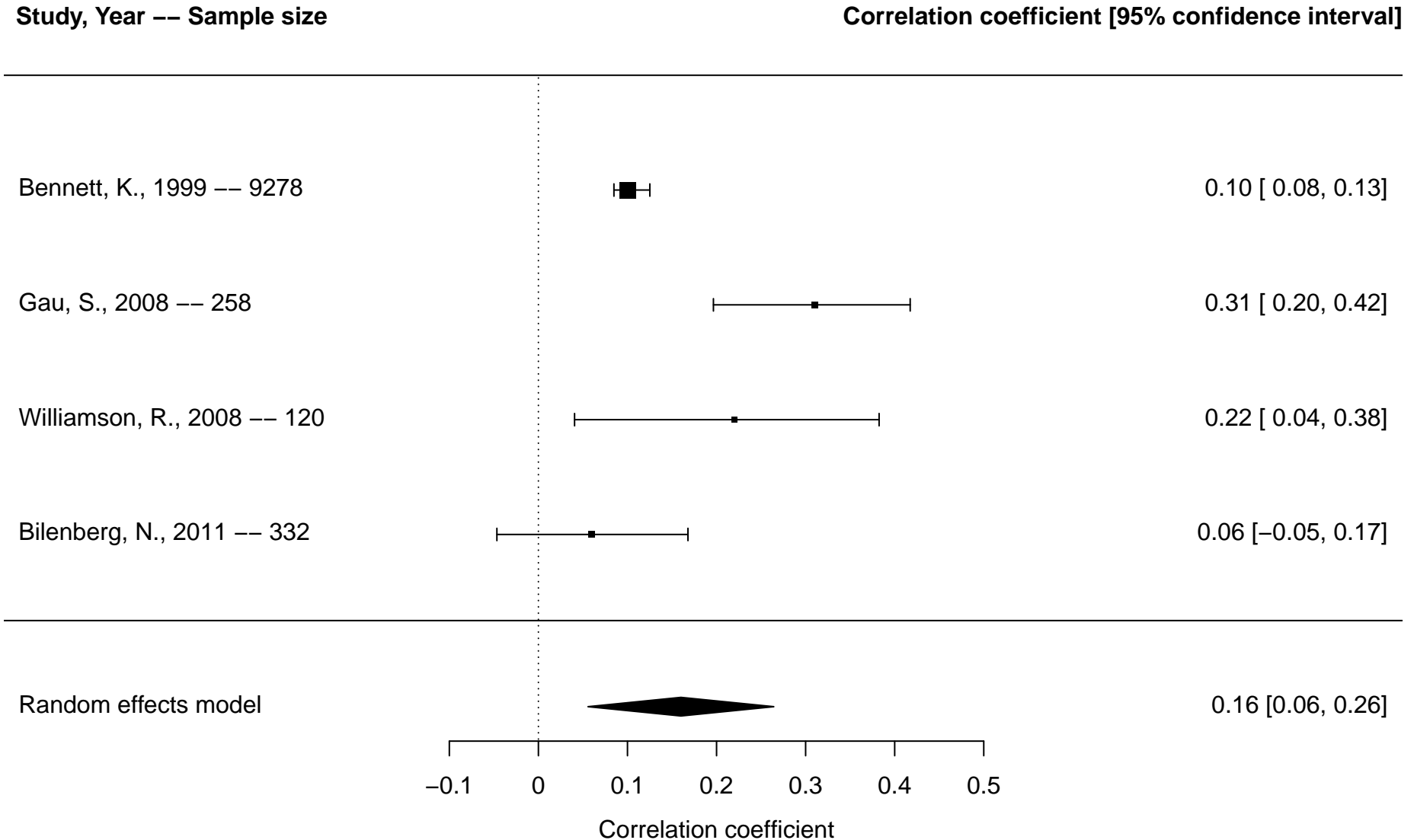
*Overall includes studies reporting on any included ADHD outcomes (diagnosis, ADHD symptoms, inattention, hyperactivity/impulsivity)

Figure S6. Forest plot of meta-analysis of infections and attention-deficit/hyperactivity disorder (ADHD) overall* based on studies reporting dichotomous outcomes



*Overall includes studies reporting on any included ADHD outcomes (diagnosis, ADHD symptoms, inattention, hyperactivity/impulsivity)

Figure S7. Forest plot of meta-analysis of infections and attention-deficit/hyperactivity disorder (ADHD) overall* based on studies reporting continuous outcomes



*Overall includes studies reporting on any included ADHD outcomes (diagnosis, ADHD symptoms, inattention, hyperactivity/impulsivity)

Figure S8. Forest plot of meta-analysis of infections and attention-deficit/hyperactivity disorder (ADHD) diagnosis based on studies reporting dichotomous outcomes

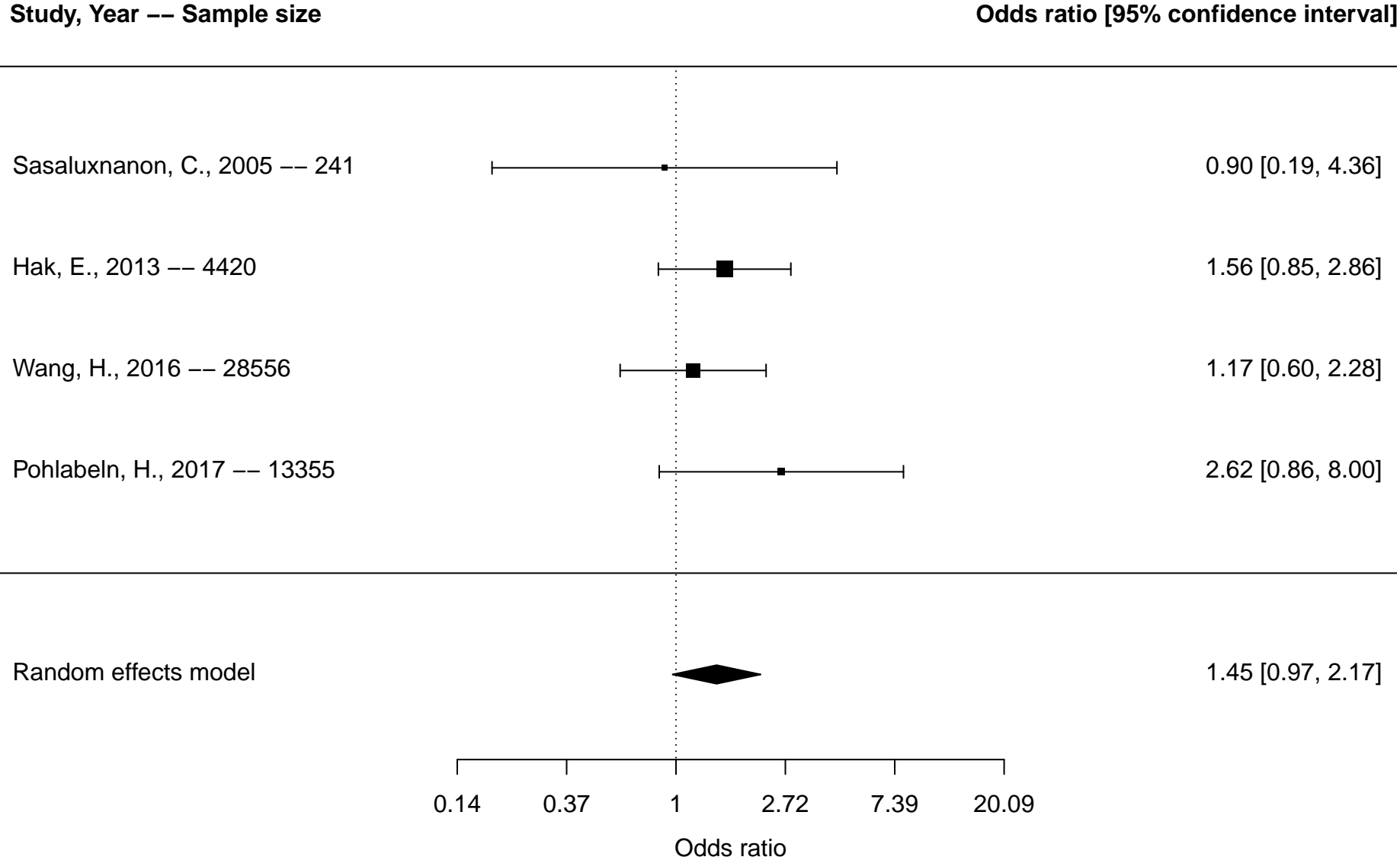


Figure S9. Forest plot of meta-analysis of infections and hyperactivity/impulsivity based on studies reporting dichotomous outcomes

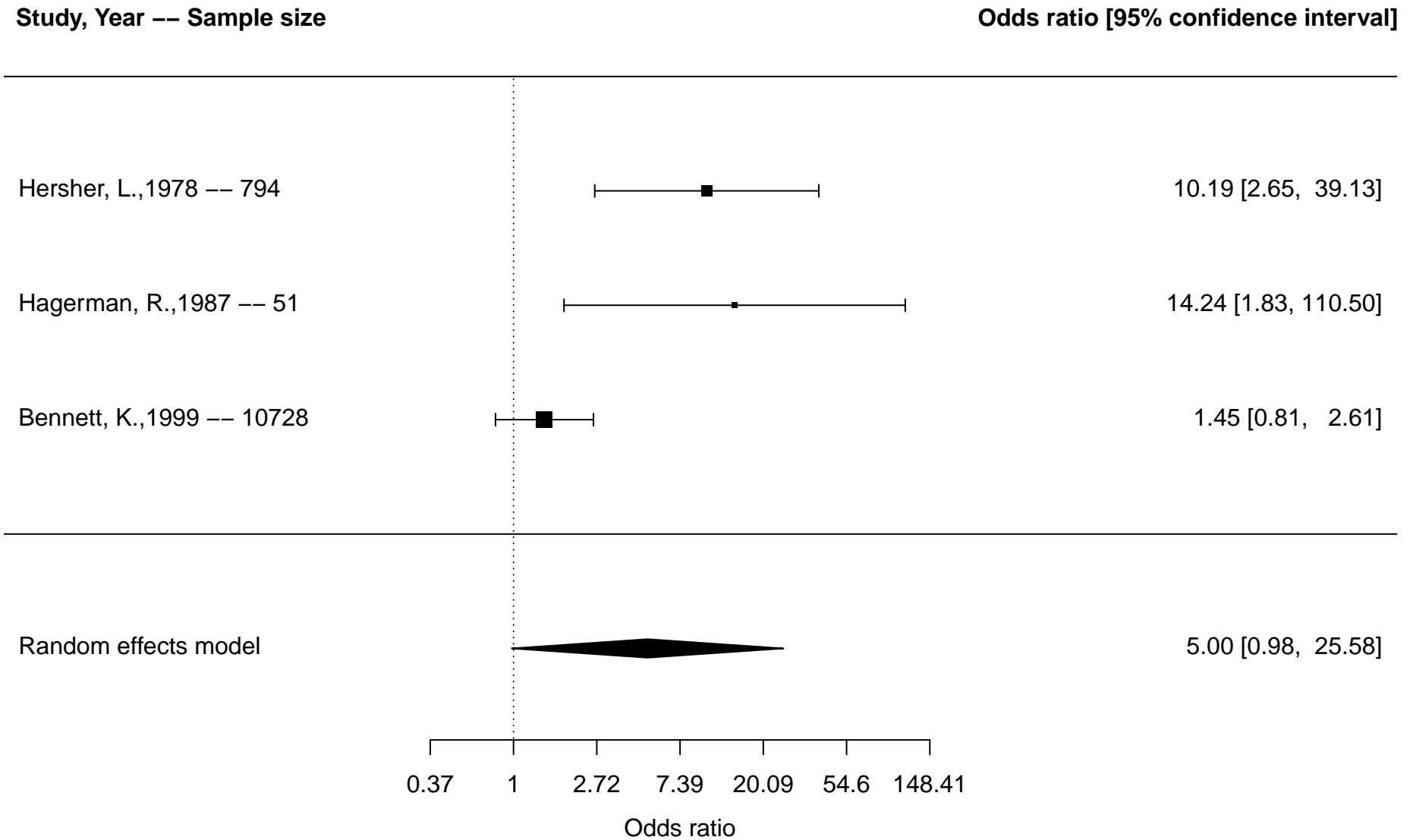
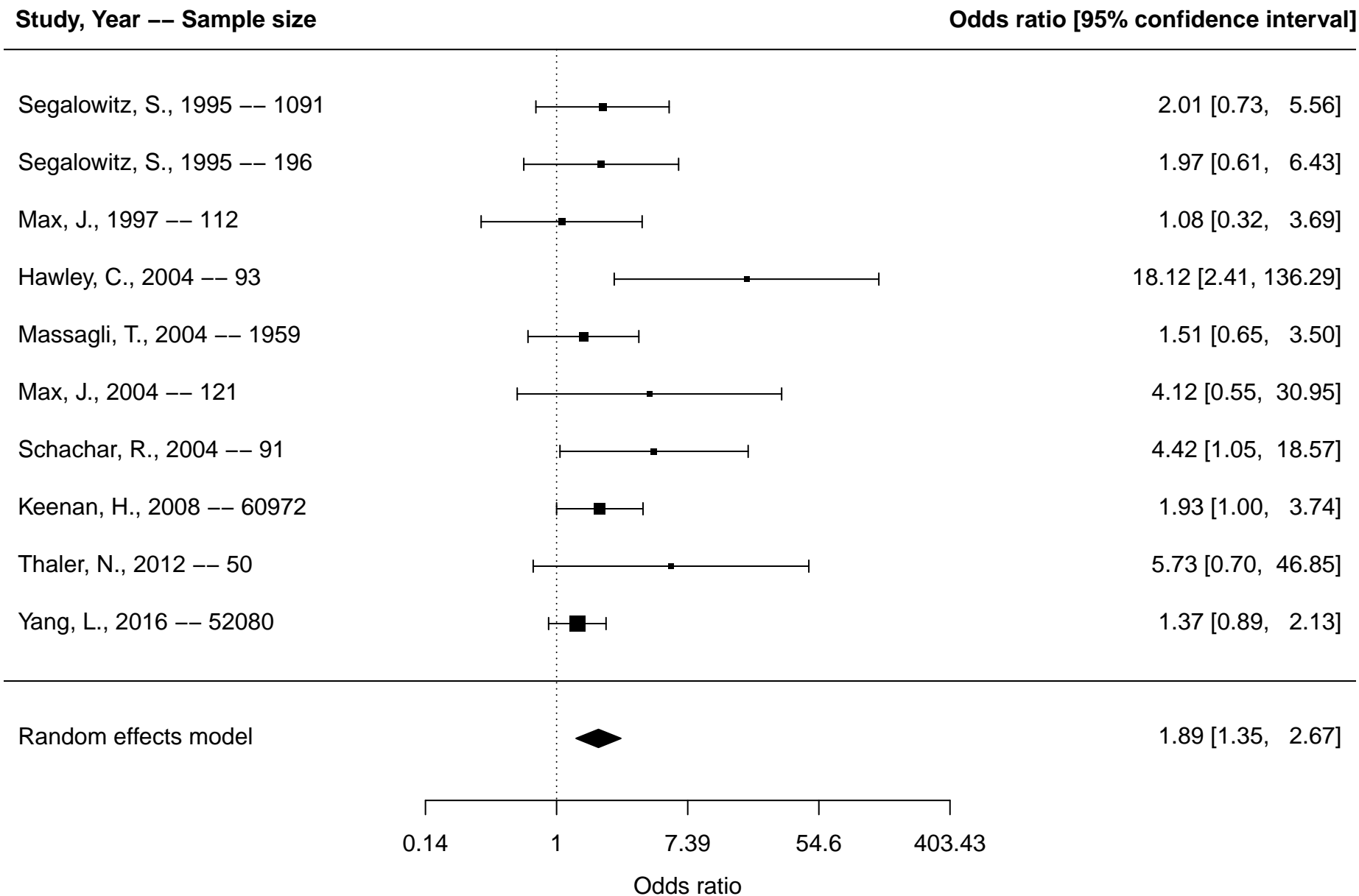
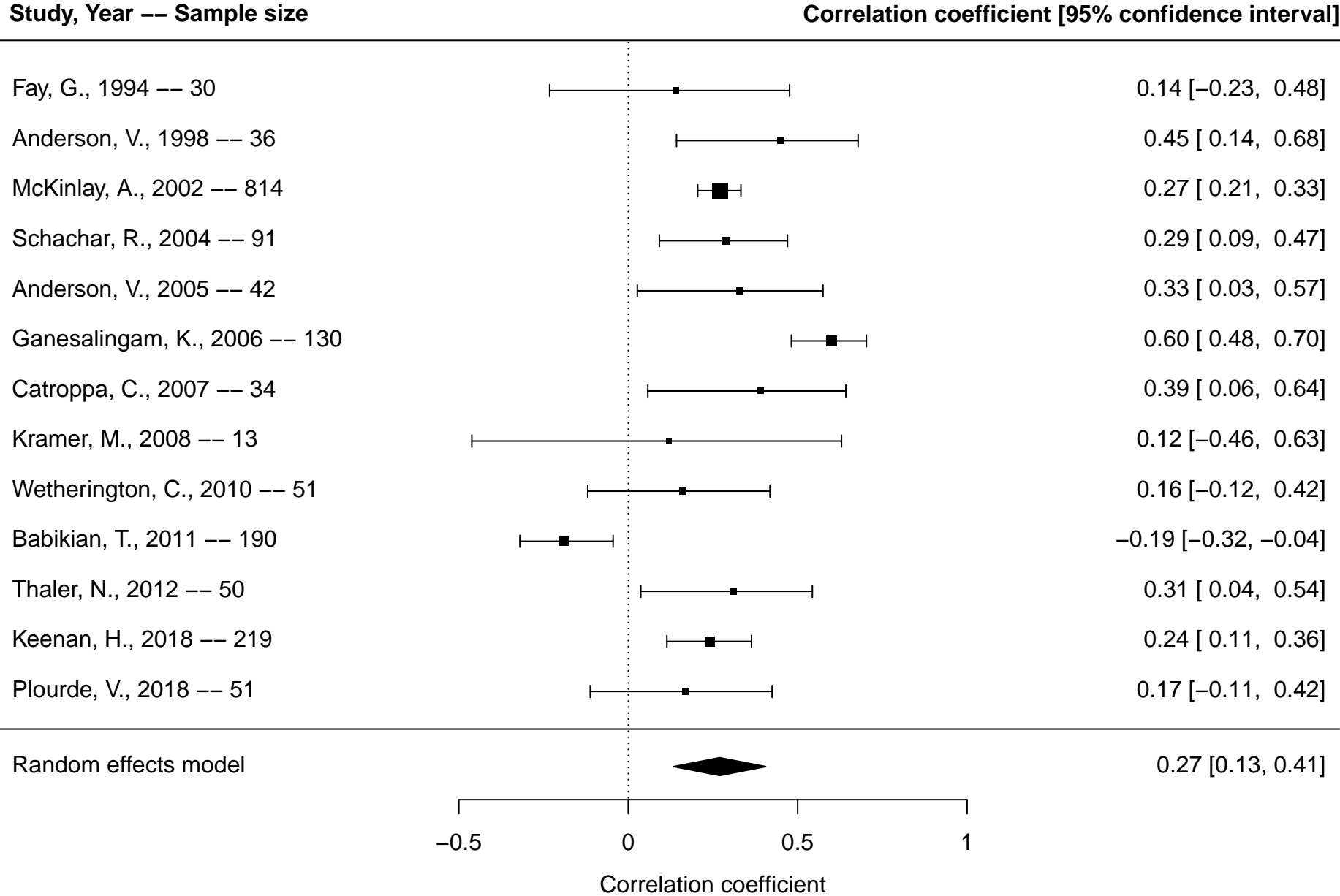


Figure S10. Forest plot of meta-analysis of head injury vs. other injuries and attention-deficit/hyperactivity disorder (ADHD) overall* based on studies reporting dichotomous outcomes



*Overall includes studies reporting on any included ADHD outcomes (diagnosis, ADHD symptoms, inattention, hyperactivity/impulsivity)

Figure S11. Forest plot of meta-analysis of head injury vs. other injuries and attention-deficit/hyperactivity disorder (ADHD) overall* based on studies reporting continuous outcomes



*Overall includes studies reporting on any included ADHD outcomes (diagnosis, ADHD symptoms, inattention, hyperactivity/impulsivity)

Figure S12. Forest plot of meta-analysis of head injury vs. other injuries and attention-deficit/hyperactivity disorder (ADHD) diagnosis dichotomous outcomes

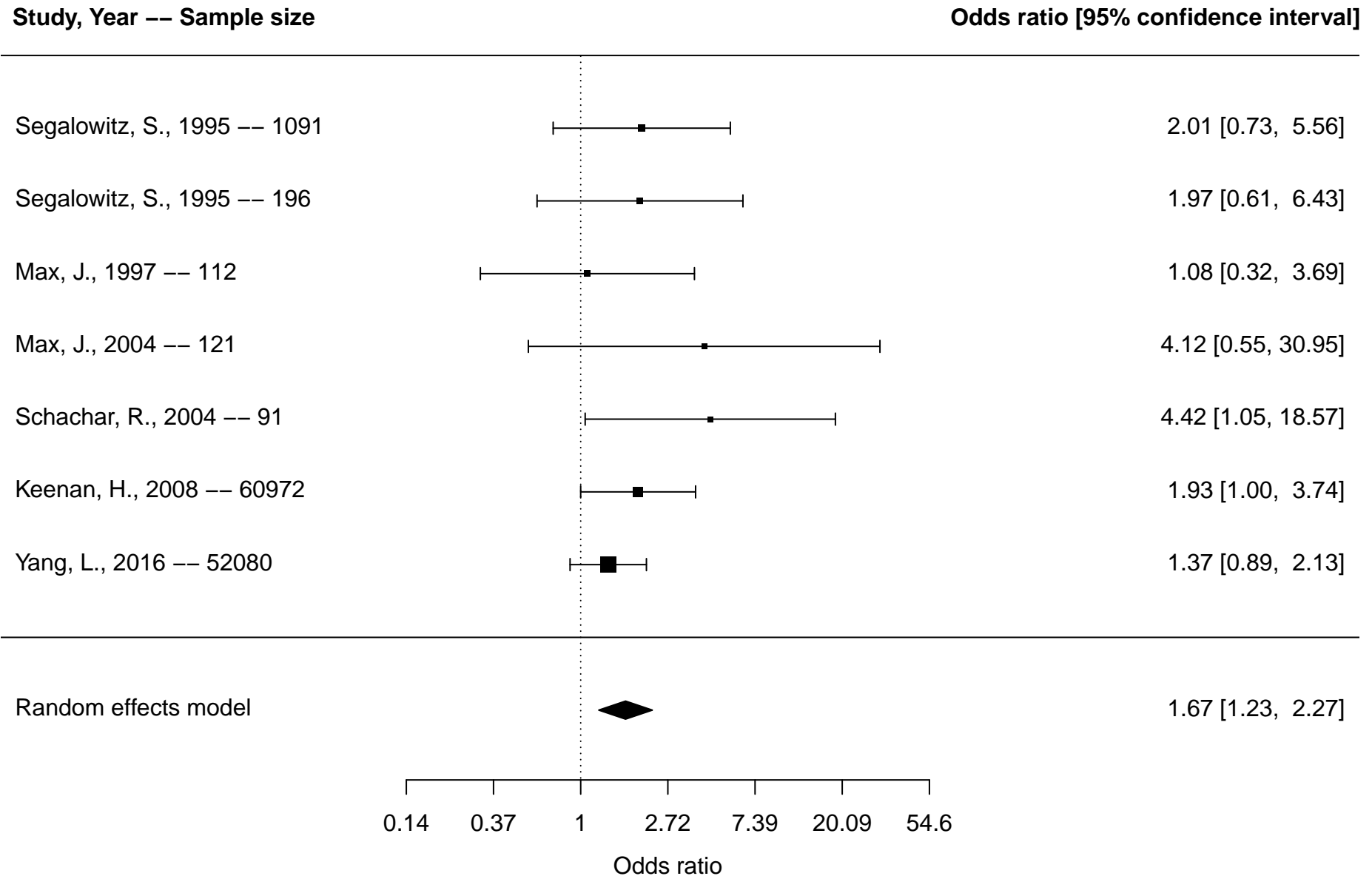


Figure S13. Forest plot of meta-analysis of head injury vs. other injuries and inattention based on studies reporting continuous outcomes

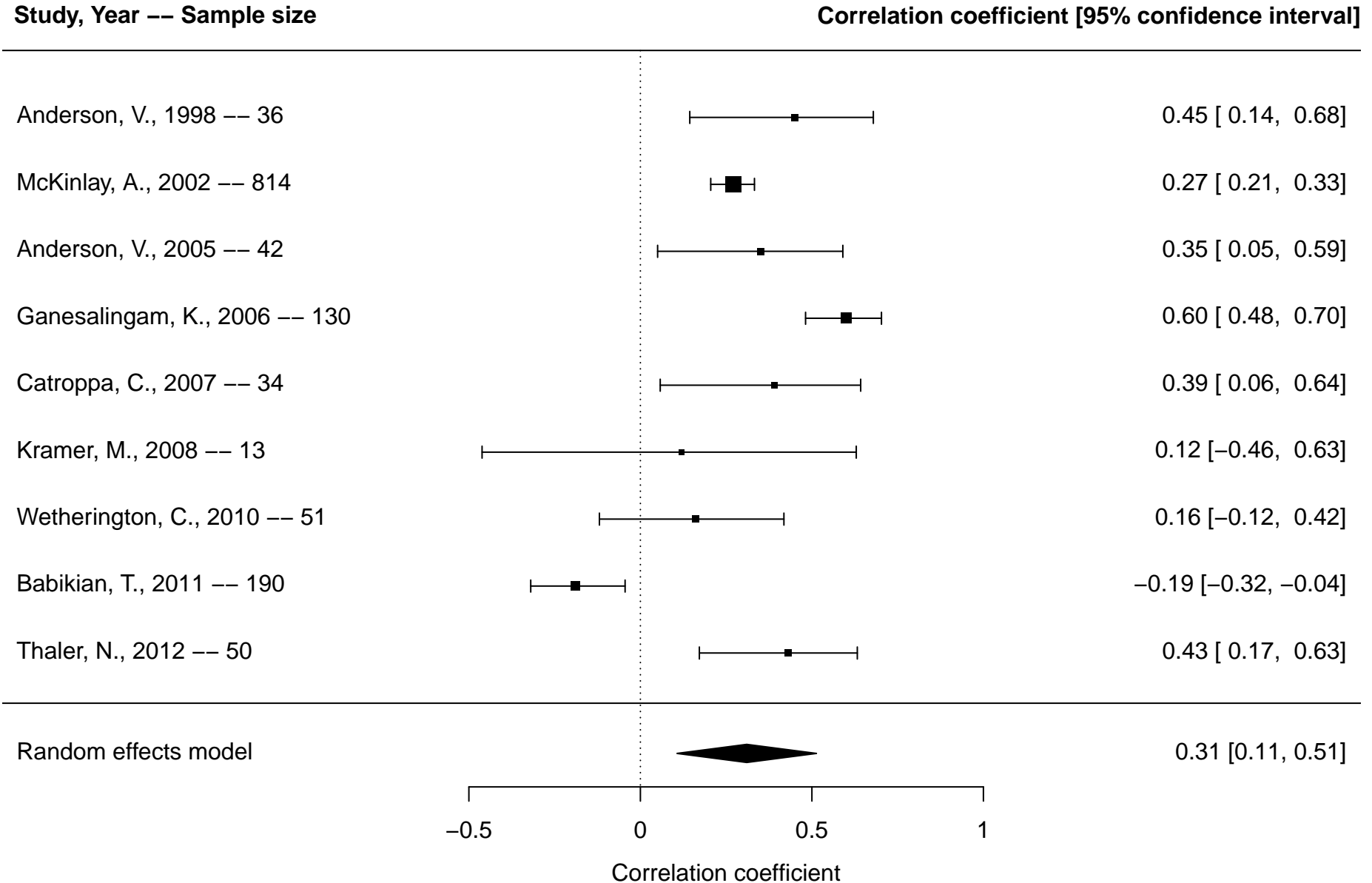


Figure S14. Forest plot of meta-analysis of head injury vs. other injuries and hyperactivity/impulsivity based on studies reporting continuous outcomes

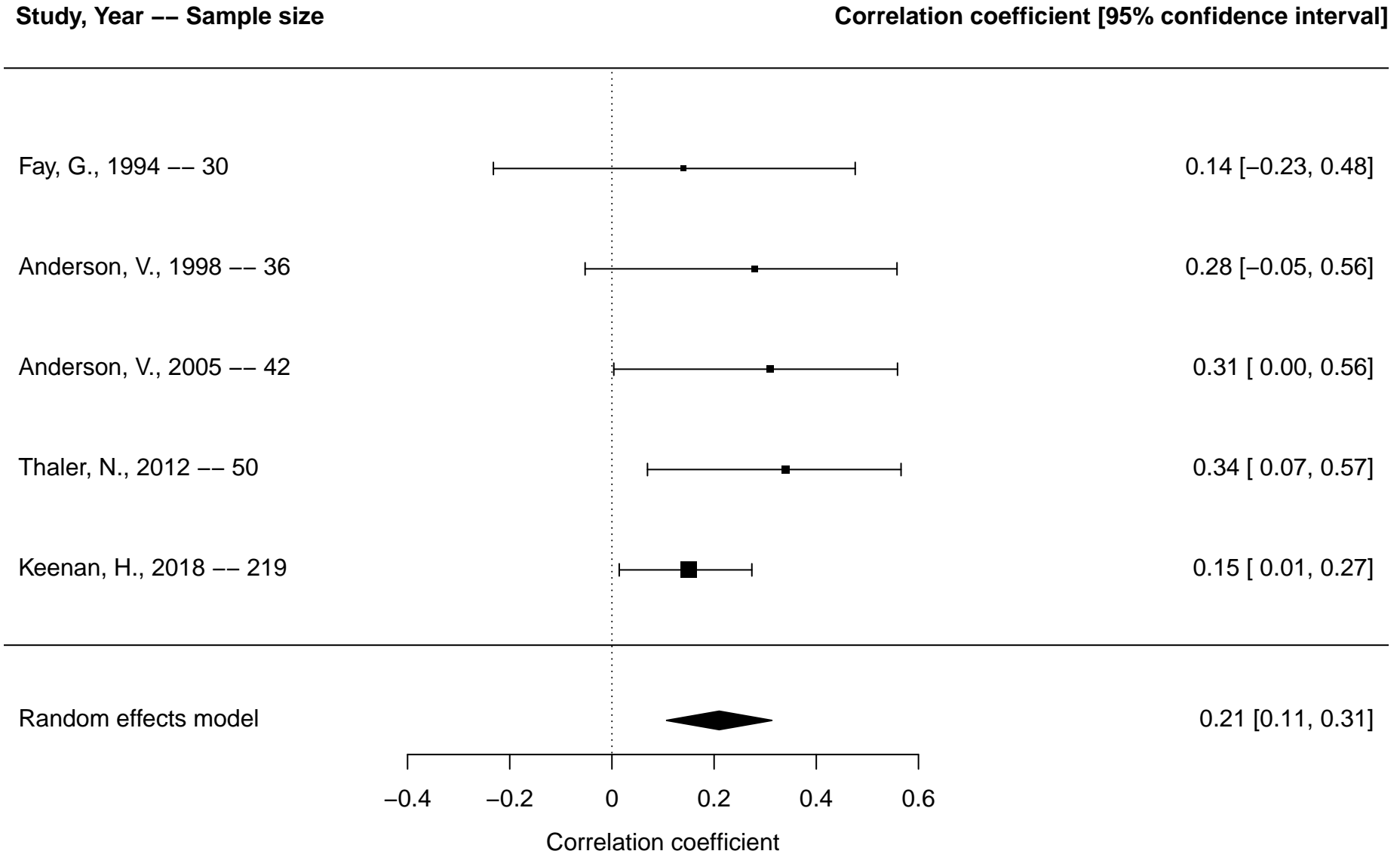
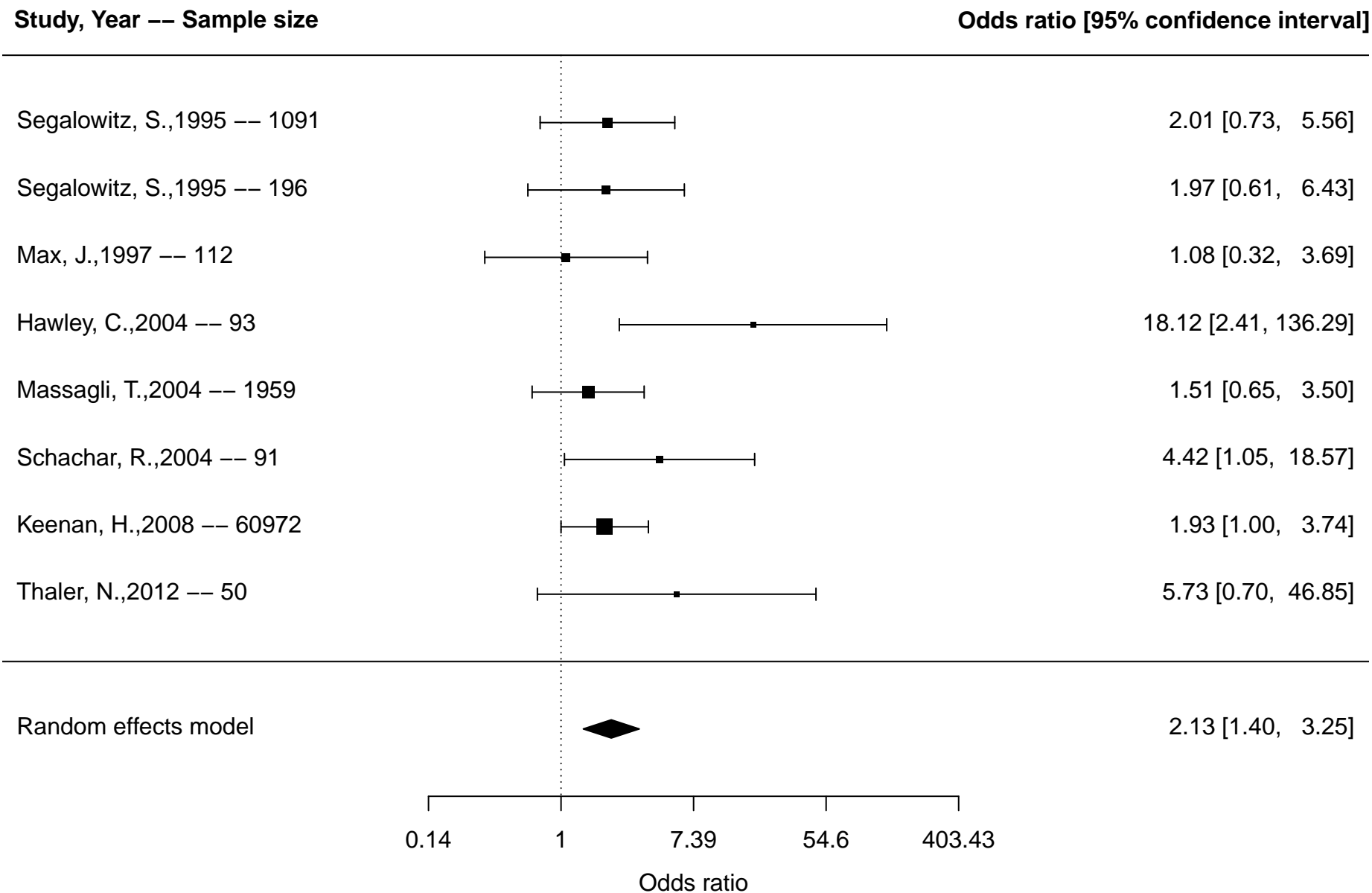
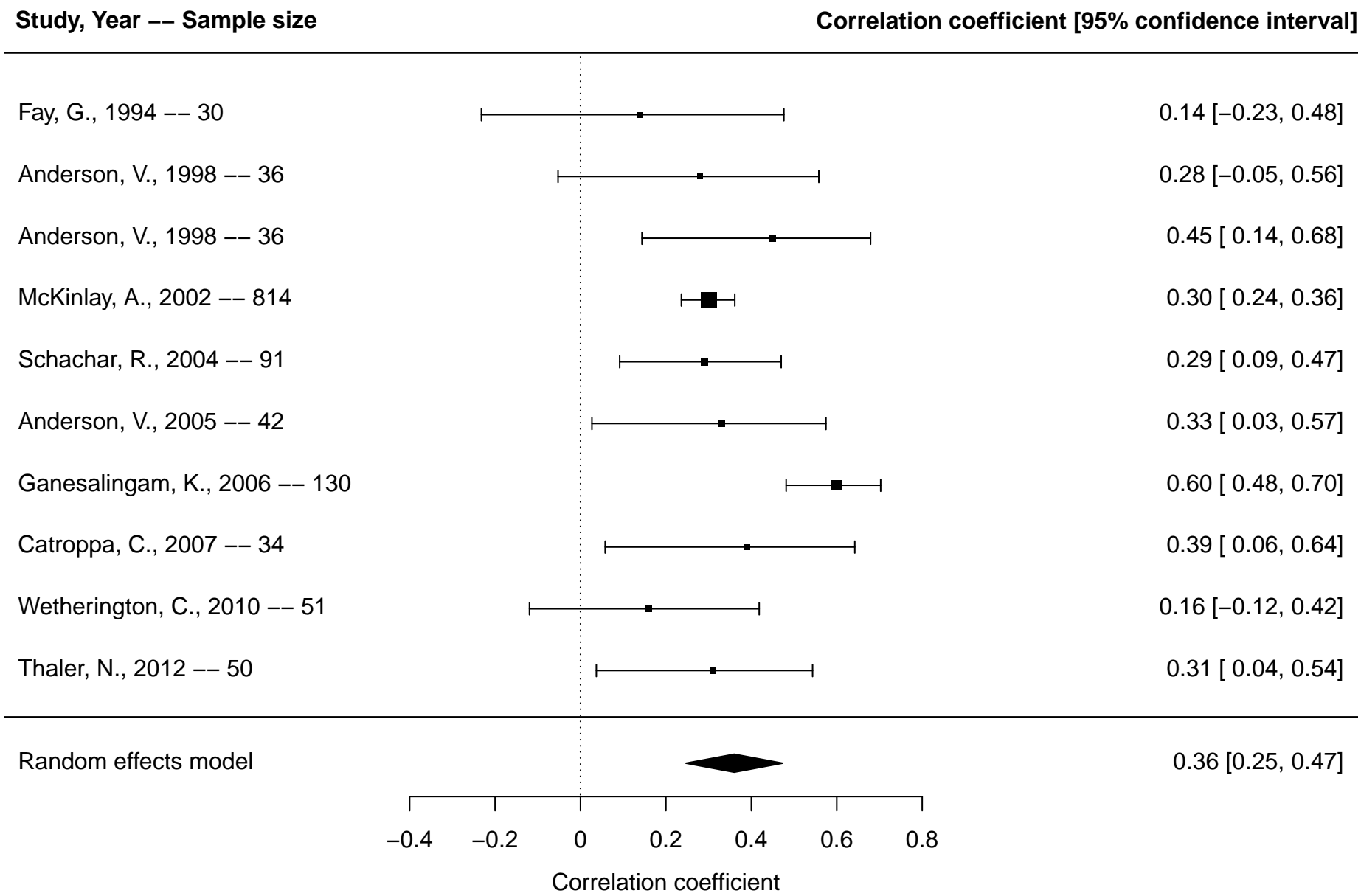


Figure S15. Forest plot of meta-analysis of head injury vs. normal controls and attention-deficit/hyperactivity disorder (ADHD) overall* based on studies reporting dichotomous outcomes



*Overall includes studies reporting on any included ADHD outcomes (diagnosis, ADHD symptoms, inattention, hyperactivity/impulsivity)

Figure S16. Forest plot of meta-analysis of head injury vs. normal controls and attention-deficit/hyperactivity disorder (ADHD) overall* based on studies reporting continuous outcomes



*Overall includes studies reporting on any included ADHD outcomes (diagnosis, ADHD symptoms, inattention, hyperactivity/impulsivity)

Figure S17. Forest plot of meta-analysis of head injury vs. normal controls and attention-deficit/hyperactivity disorder (ADHD) diagnosis dichotomous outcomes

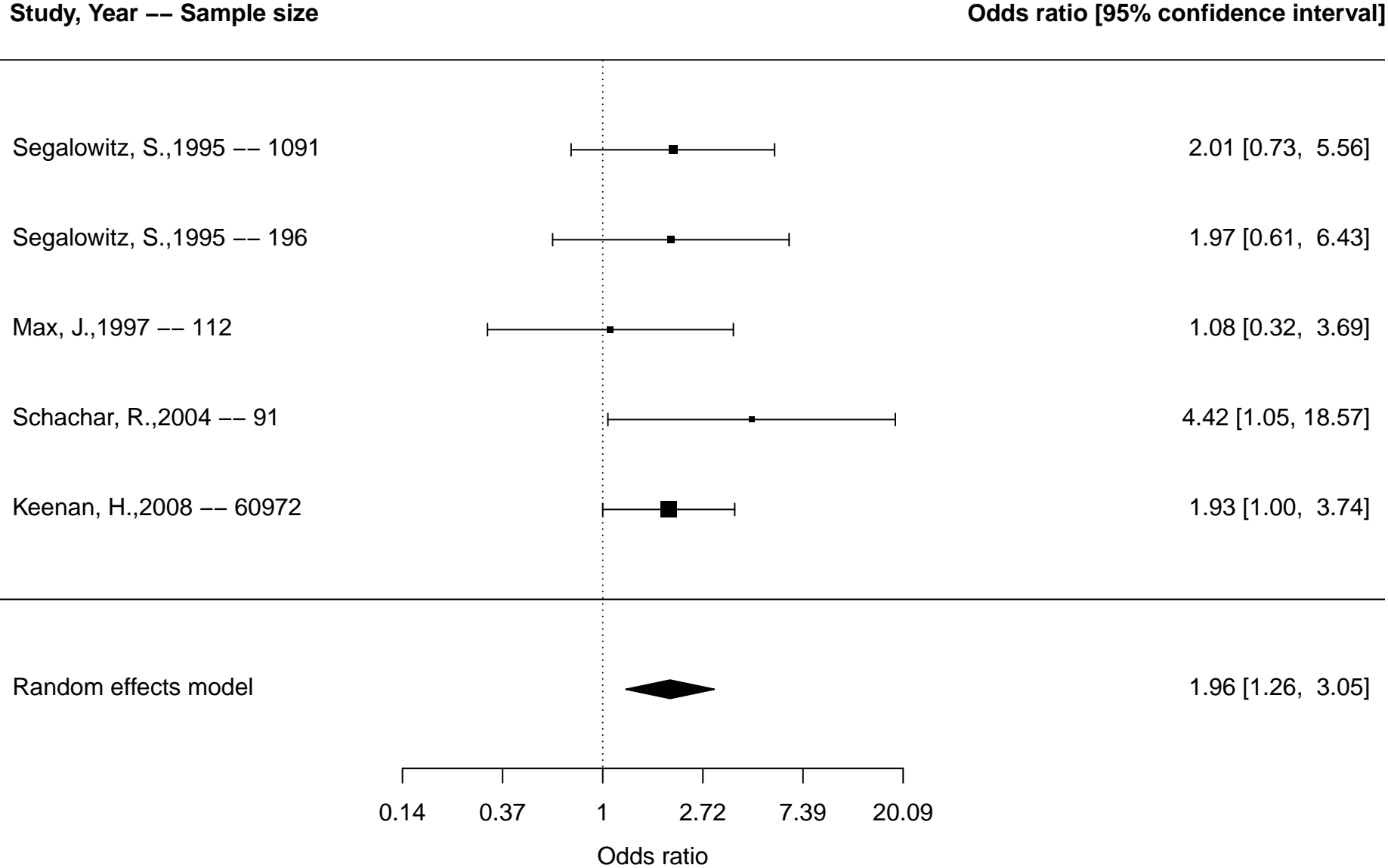


Figure S18. Forest plot of meta-analysis of head injury vs. normal controls and inattention based on studies reporting continuous outcomes

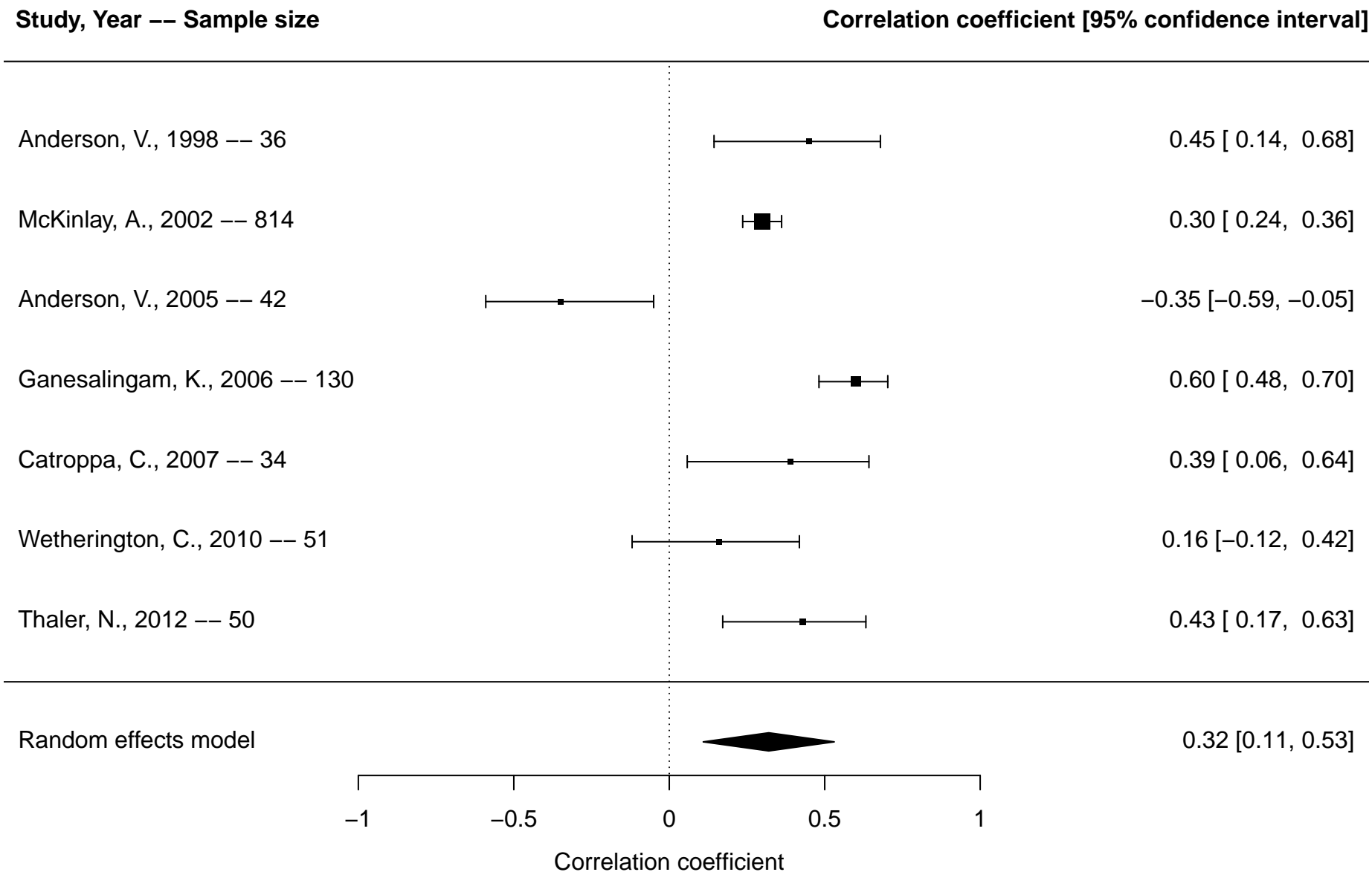


Figure S19. Forest plot of meta-analysis of head injury vs. normal controls and hyperactivity/impulsivity, continuous outcomes

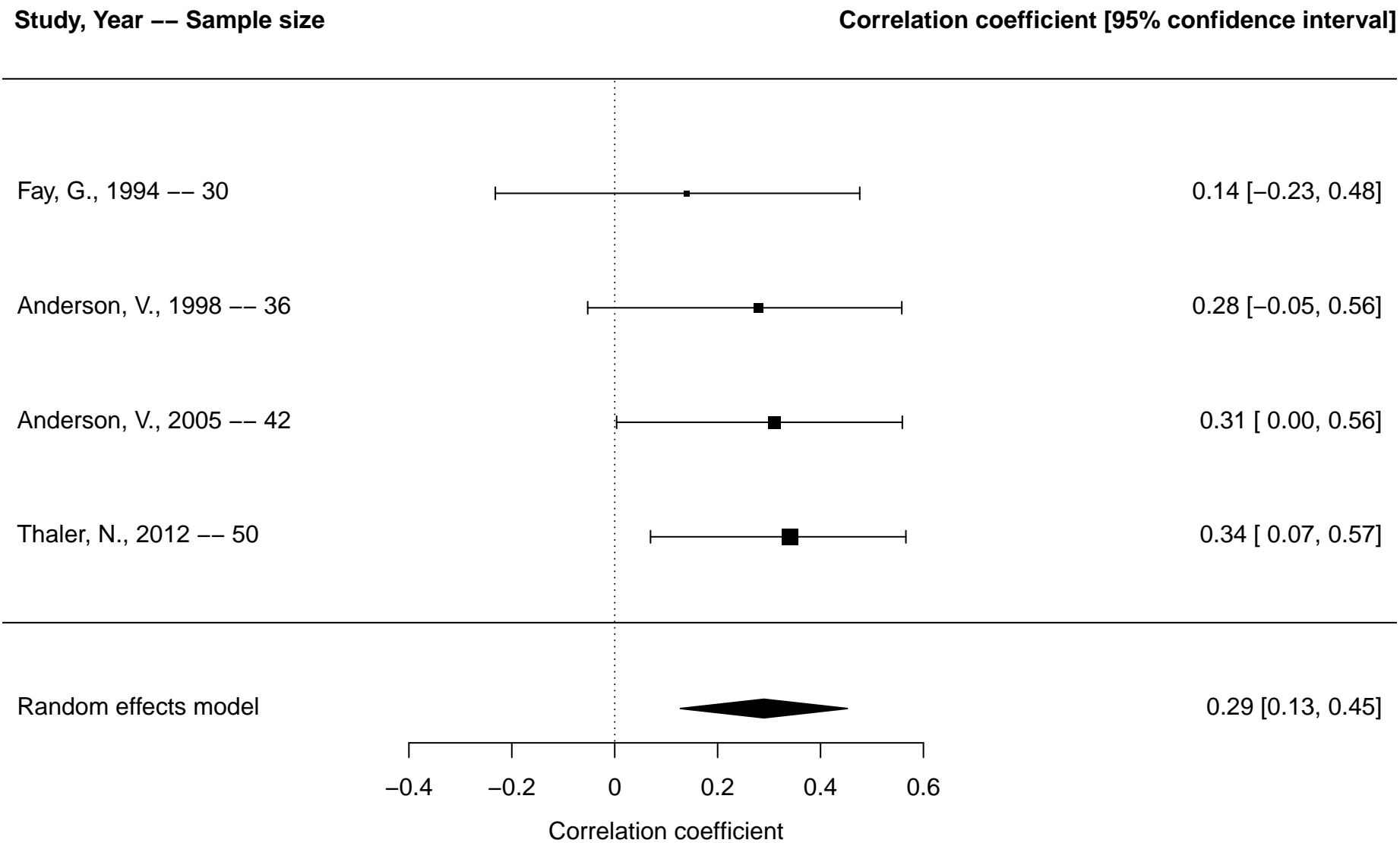
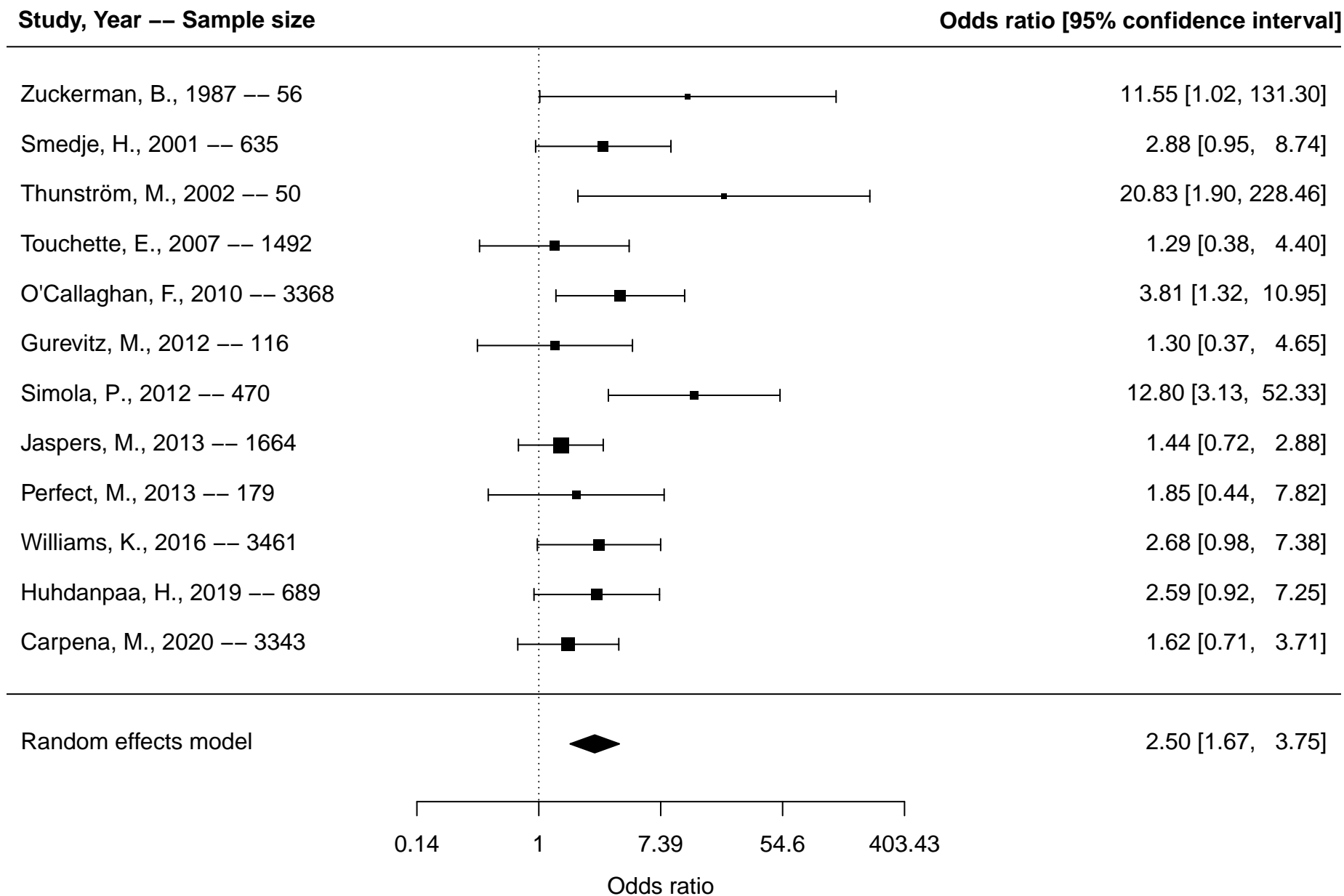
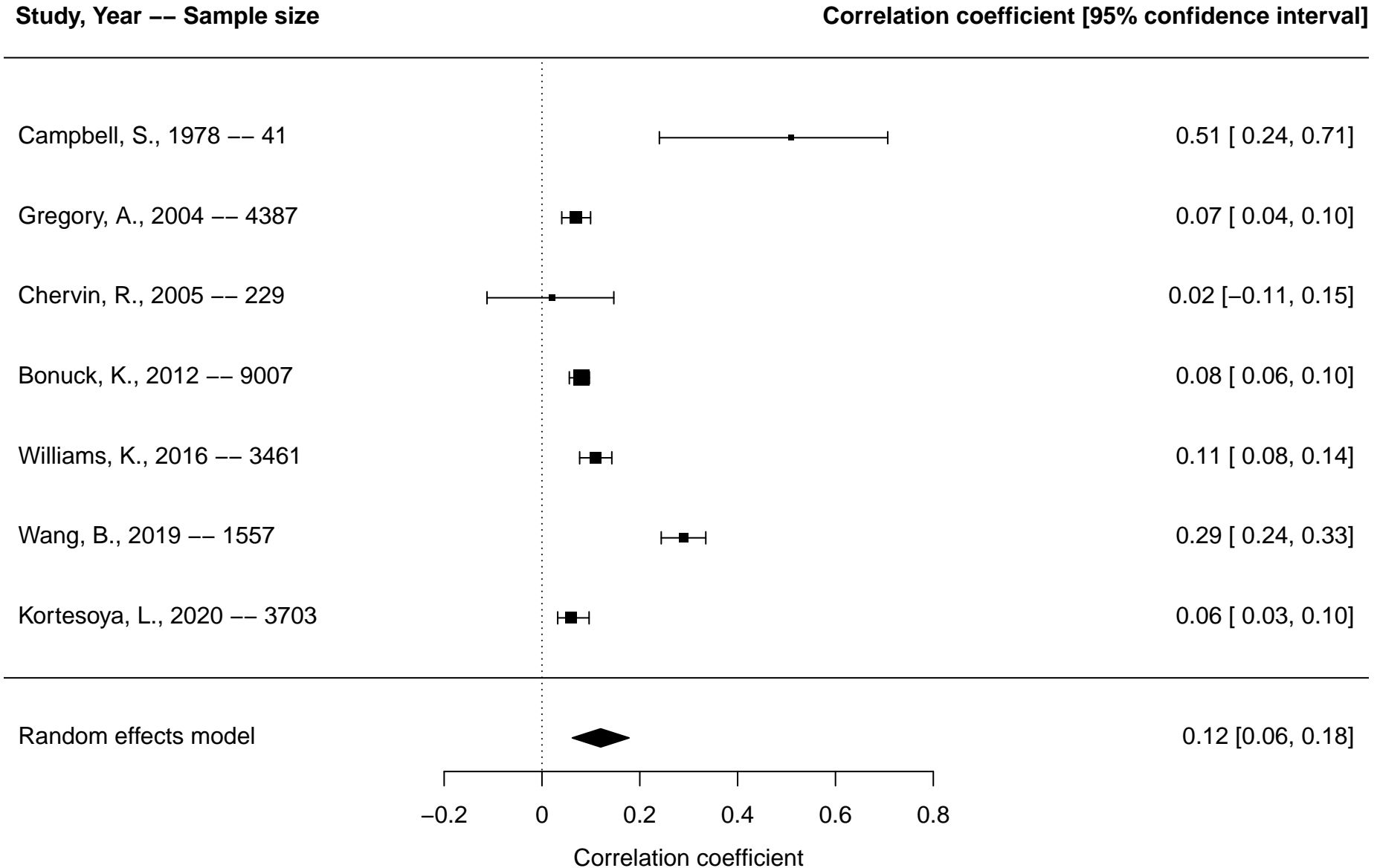


Figure S20. Forest plot of meta-analysis of sleep problems and attention-deficit/hyperactivity disorder (ADHD) overall* based on studies reporting dichotomous outcomes



*Overall includes studies reporting on any included ADHD outcomes (diagnosis, ADHD symptoms, inattention, hyperactivity/impulsivity)

Figure S21. Forest plot of meta-analysis of sleep problems and attention-deficit/hyperactivity disorder (ADHD) overall* based on studies reporting continuous outcomes



*Overall includes studies reporting on any included ADHD outcomes (diagnosis, ADHD symptoms, inattention, hyperactivity/impulsivity)

Figure S22. Forest plot of meta-analysis of sleep problems and inattention based on studies reporting continuous outcomes

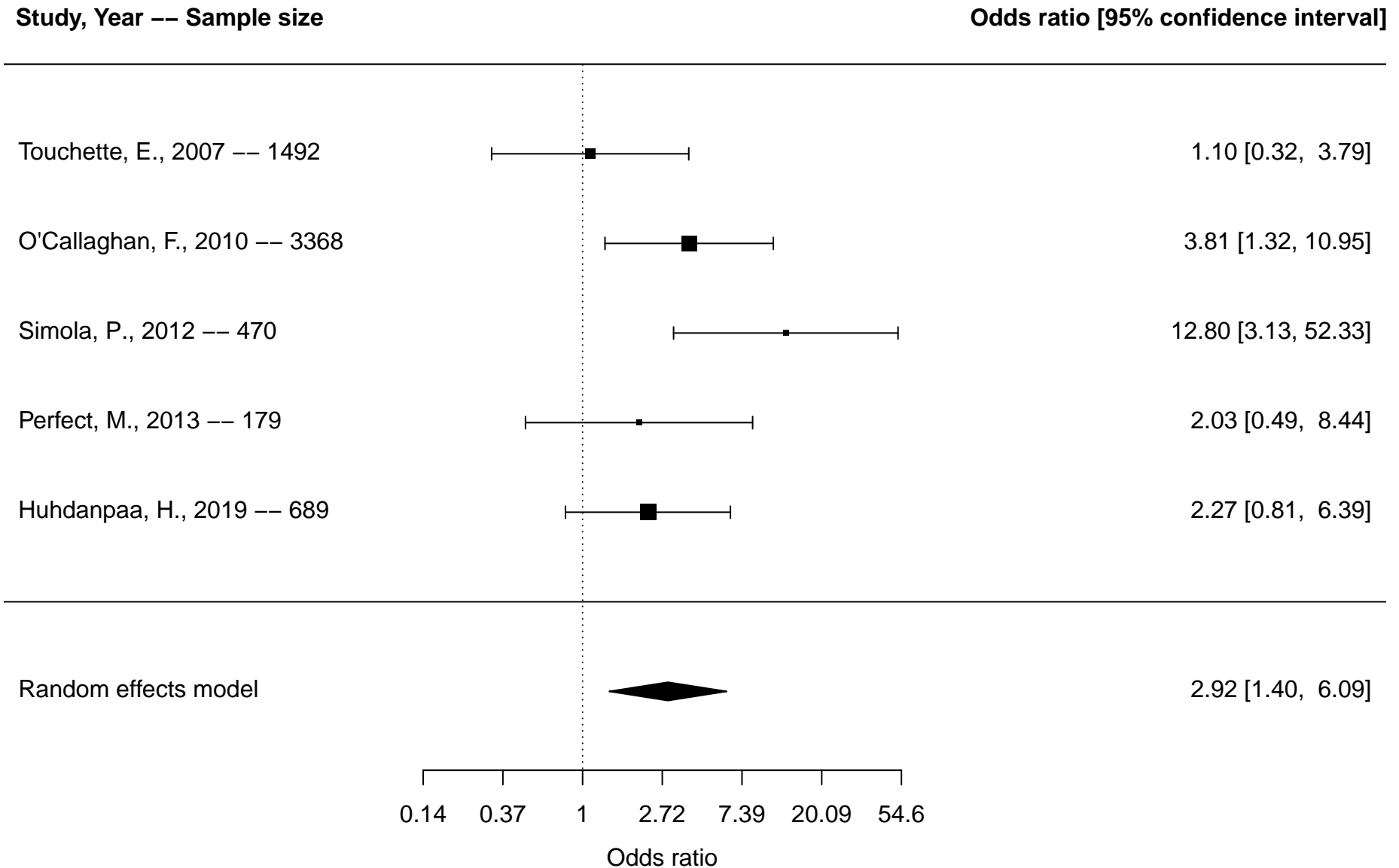


Figure S23. Forest plot of meta-analysis of sleep problems and hyperactivity/impulsivity based on studies reporting continuous outcomes

