

# COVID Data Tracker

Maps, charts, and data provided by CDC, updates Mon-Fri by 8 pm ET

[COVID-19 Home >](#)



CDC recommends use of [COVID-19 Community Levels](#) to determine the impact of COVID-19 on communities and to take [action](#). CDC also provides [Transmission Levels](#) (also known as Community Transmission) to describe the amount of COVID-19 spread within each county. Healthcare facilities use Transmission Levels to determine [infection control](#) interventions.

## United States at a Glance

Collapse —

**United States**  
At a Glance

**Cases Total** 103,268,408

Case Trends

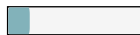
**Deaths Total** 1,115,637

Death Trends

**Current Hosp.** 20,339

Admission Trends

**16.1% of People with Updated Booster Dose**



Data Tracker Home

Cases, Deaths, & Testing

Case & Death Demographic Trends

Vaccination Distribution & Coverage

Vaccine Effectiveness & Breakthrough Surveillance

Health Equity

Pediatric

Pregnancy

People at Increased Risk

## Wastewater Surveillance

### COVID-19: Wastewater Surveillance

Communities can track the presence of SARS-CoV-2, the virus that causes COVID-19, in wastewater. Wastewater surveillance data can provide an early warning of COVID-19's spread in communities. For more information, see [Wastewater Surveillance System page](#).

#### Monitoring Wastewater Surveillance Data

Wastewater surveillance for COVID-19 is a rapidly developing field. State, tribal, local, and federal departments participating in the National Wastewater Surveillance System (NWSS) submit wastewater samples and how frequently data are reported to CDC varies by health department.

Wastewater data are meant to be used with other COVID-19 surveillance data to better understand the spread of the virus in a community. Learn more about wastewater data by exploring each of the charts and reports. The most common SARS-CoV-2 variant is the most dominant at each wastewater sampling site, see [CDC COVID-19 Variant Surveillance](#).

[View information about the data and download the data.](#)

On This Page

## Wastewater Surveillance

Health Care Settings

Social Impact & Prevention

Variants & Genomic Surveillance

Antibody Seroprevalence

Post-COVID Conditions

Traveler-Based Genomic Surveillance

Other COVID-19 Data

Communications Resources

COVID-19 Home

### ✉ Get Email Updates

Sign up to receive the COVID Data Tracker Weekly Review.

Email Address:

[What's this?](#)

[Monitoring Wastewater Surveillance Data](#)

[Wastewater Metric Chart](#)

[Wastewater Metric Map](#)

[Data Downloads](#)

[Terms to Know](#)

[About the Data](#)

Maps, charts, and data provided by CDC, updates Mon-Fri by 8pm ET<sup>†</sup>. This represents all wastewater data s DCIPHER platform, with the exceptions described in the [About the Data section](#) below. Each dot on the map all or part of a “[sewershed](#),” which is the area contributing wastewater to a sampling location. Not all comm Participation is voluntary, and wastewater samples are collected from sewer systems so communities that r represented. In addition, some sites that submit data to NWSS are not represented on the map due to vario size or having facility-specific sampling.

[View Footnotes and Download Data](#)

## Wastewater Metric Chart

This chart shows how much virus levels have changed (increased and decreased) over time at v States. It shows the percent of sites in each category of the percent change metric for each dat data.

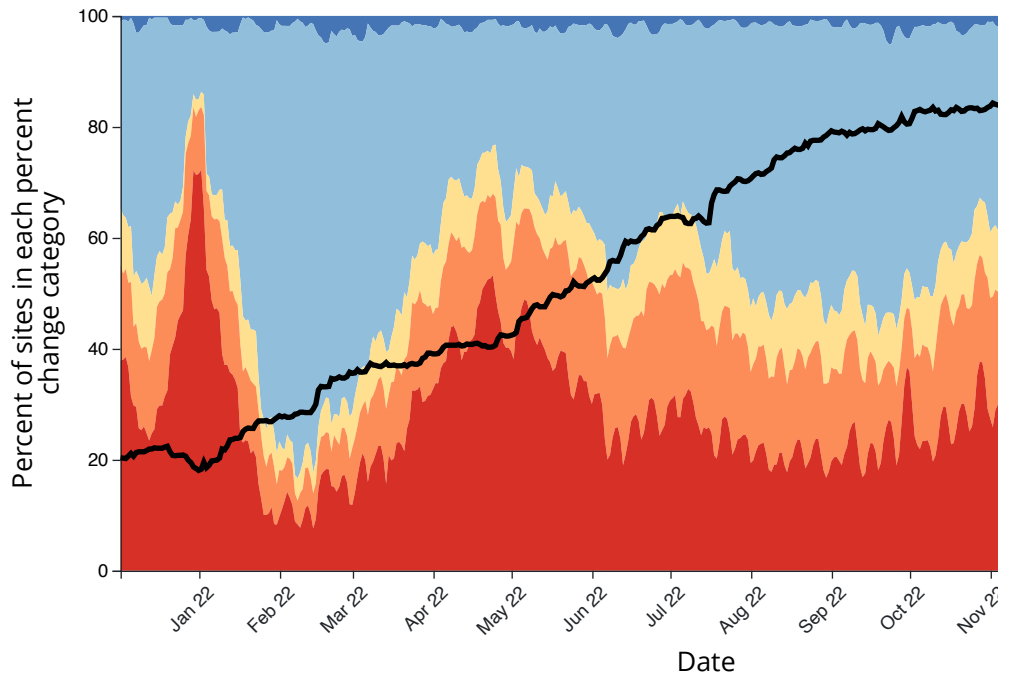
The percent change metric shows whether virus levels have increased or decreased at sites ov

- Blue categories (Large decrease (-100%); Decrease (-99% to -10%)): Virus levels decreased i
- Yellow category (Stable (-9% to 9%)): Virus levels stayed about the same at these sites in th
- Orange and red categories (Increase (10% to 99%); Large increase (100% or more)): Virus le last 15 days.

The chart shows the overall percent of sites that were in each category over time since January is shaded light or dark blue, it means virus levels were decreasing at more sites at that point in shaded red or orange, it means virus levels were increasing at more sites at that point in time. last 15 days metric may be affected by how many wastewater plants were collecting wastewater the number of sampling sites with available data for each date.

Note: This chart **does not** show overall levels of SARS-CoV-2 in wastewater.

## Percent of sites in each percent change category States\*



Percent change categories

Large decrease (-100%)

Decrease (-99% to -10%)

Stable (-9 to 9%)

Increase (10 to 99%)

Large increase (100% or more)

Number of sites reporting

\*The darker bar on the right side of the figure highlights the most recent 2 weeks, which may have more data. The actual number of sites reporting during those 2 weeks will likely increase as historical data is added.

Download ▾

## Wastewater Metric Map

State or territory:

Select State or Territory

County:

Select a state in order to enable county select

[Reset Selections](#)

Time Period: Feb 11, 2023 – Feb 25, 2023

Major Cities

**Metric:**

- Current virus levels in wastewater by site
- Percent change in the last 15 days
- Percent of wastewater samples with detectable virus

**Show:**

- Sites with no recent data
- Sites that started sampling after

### Current virus levels in wastewater by site

This metric shows whether SARS-CoV-2 levels at a site are currently higher or lower than past levels. 0% means levels are the lowest they have been at the site; 100% means levels are the highest they have been at the site. Public health officials watch for increasing levels of the virus in wastewater over time to inform public health decisions.

**⚠️ Note:** Sites began collecting data at different times. Sites that began reporting wastewater data are not comparable to sites that started reporting data on or before December 1, 2021. The current data for these sites is not long enough to reflect the same surges as the other sites.

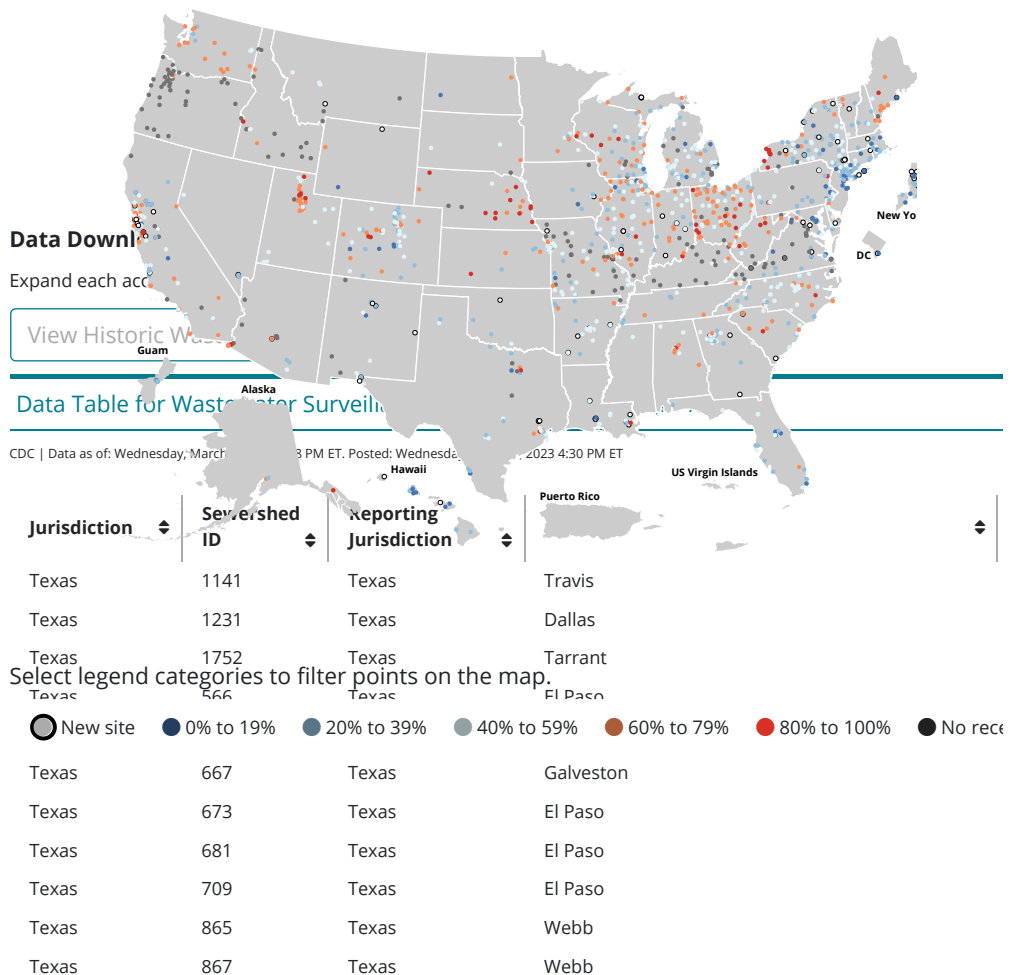
Current SARS-CoV-2 virus levels by site, United States

Current virus levels category	Num. sites	% sites	Category
<input type="checkbox"/> New Site	89	7	134%
<input type="checkbox"/> 0% to 19%	81	7	25%
<input type="checkbox"/> 20% to 39%	294	24	7%
<input type="checkbox"/> 40% to 59%	441	35	- 14%
<input type="checkbox"/> 60% to 79%	275	22	- 8%
<input type="checkbox"/> 80% to 100%	66	5	- 12%

Total sites with current data: 1246

Total number of wastewater sampling sites: 1434

[How is the current SARS-CoV-2 level compared to past levels calculated?](#)



Jurisdiction	Sewershed ID	Reporting Jurisdiction	County
Virginia	1160	Virginia	Hanover
Virginia	1195	Virginia	Norfolk City
Virginia	1197	Virginia	York
Virginia	1198	Virginia	Wise
Virginia	1211	Virginia	York, Gloucester, Mathews
Virginia	1218	Virginia	Petersburg City
Virginia	1272	Virginia	Franklin
Virginia	892	Virginia	Colonial Heights City, Petersburg City, Prince George, Chesterfield, Dinwiddie
Vermont	1157	Vermont	Bennington
Vermont	1751	Vermont	Chittenden
Vermont	1753	Vermont	Windsor
Washington	1139	Washington	King, Pierce
Washington	1142	Washington	King, Snohomish
Washington	499	Washington	Clark
Texas	1131	Texas	Kaufman
Tennessee	1607	Tennessee	Chester
Tennessee	1445	Tennessee	Sumner
Tennessee	1323	Tennessee	Shelby
Tennessee	1282	Tennessee	Williamson, Rutherford, Davidson
South Dakota	672	South Dakota	Pennington
South Dakota	1266	South Dakota	Minnehaha, Lincoln
South Carolina	599	South Carolina	Greenwood
South Carolina	1549	South Carolina	Greenville
South Carolina	1541	South Carolina	Horry
South Carolina	1265	South Carolina	Georgetown
Rhode Island	677	Rhode Island	Bristol
Rhode Island	565	Rhode Island	Kent
Rhode Island	548	Rhode Island	Providence
Rhode Island	1224	Rhode Island	Kent
Rhode Island	1134	Rhode Island	Kent
Pennsylvania	1617	Pennsylvania	Lackawanna
Pennsylvania	1473	Pennsylvania	Westmoreland
Pennsylvania	125	Pennsylvania	Butler, Allegheny
Pennsylvania	1083	Pennsylvania	Montgomery
Pennsylvania	1081	Pennsylvania	Montgomery
Oklahoma	831	Oklahoma	Beckham
Oklahoma	767	Oklahoma	Garfield
Oklahoma	1264	Oklahoma	Carter
New York City	552	New York City	Richmond
New York City	551	New York City	Kings
New York City	549	New York City	Kings
New York City	541	New York City	Kings
New York City	509	New York City	New York
New York City	509	New York City	New York
New York City	505	New York City	Queens
New York City	505	New York City	Queens
New York City	503	New York City	Queens
New York City	500	New York City	New York

Jurisdiction	Sewershed ID	Reporting Jurisdiction	County
New York City	500	New York City	New York
New York City	498	New York City	Bronx
New York City	498	New York City	Bronx
New York City	487	New York City	Queens
New York City	485	New York City	Kings
Nevada	777	Nevada	Clark
Nevada	703	Nevada	Clark
Nevada	663	Nevada	Clark
Nevada	554	Nevada	Washoe
Nevada	1082	Nevada	Clark
New Mexico	854	New Mexico	Los Alamos
New Mexico	764	New Mexico	Sandoval, Bernalillo
New Mexico	1386	New Mexico	Los Alamos
New Jersey	1616	New Jersey	Monmouth
New Jersey	1453	New Jersey	Monmouth
New Jersey	1291	New Jersey	Passaic
New Hampshire	497	New Hampshire	Merrimack
New Hampshire	285	New Hampshire	Carroll
North Dakota	1471	North Dakota	Stark
North Dakota	1463	North Dakota	Grand Forks
North Carolina	569	North Carolina	Lenoir, Greene
North Carolina	538	North Carolina	Pasquotank
North Carolina	537	North Carolina	Stanly
North Carolina	1223	North Carolina	Rowan
North Carolina	1220	North Carolina	Rowan
North Carolina	1148	North Carolina	Surry
Montana	1176	Montana	Custer
Missouri	1559	Missouri	Jefferson
Minnesota	849	Minnesota	Scott, Carver, Hennepin
Minnesota	783	Minnesota	Washington, Hennepin, Dakota, Anoka, Ramsey
Maine	716	Maine	Cumberland
Maine	560	Maine	Sagadahoc
Maine	347	Maine	Knox
Maine	1302	Maine	York
Maine	1206	Maine	York
Maryland	666	Maryland	Allegany
Maryland	563	Maryland	Wicomico
Maryland	547	Maryland	Howard
Maryland	1348	Maryland	Charles
Maryland	1284	Maryland	Anne Arundel
Maryland	1268	Maryland	Anne Arundel
Maryland	1262	Maryland	Anne Arundel
Maryland	1261	Maryland	Anne Arundel
Massachusetts	470	Massachusetts	Hampden
Massachusetts	1495	Massachusetts	Worcester
Massachusetts	1330	Massachusetts	Worcester
Louisiana	727	Louisiana	Orleans
Louisiana	1659	Louisiana	Jefferson
Louisiana	1652	Louisiana	Lafayette

Jurisdiction	Sewershed ID	Reporting Jurisdiction	County
Louisiana	1652	Louisiana	Lafayette
Louisiana	1651	Louisiana	Lafayette
Louisiana	1650	Louisiana	Lafayette
Louisiana	1650	Louisiana	Lafayette
Louisiana	1633	Louisiana	Lafayette
Louisiana	1633	Louisiana	Lafayette
Louisiana	1626	Louisiana	Jefferson
Louisiana	1615	Louisiana	Saint Tammany
Louisiana	1497	Louisiana	Jefferson
Louisiana	1229	Louisiana	Rapides
Louisiana	1116	Louisiana	East Baton Rouge
Louisiana	1107	Louisiana	East Baton Rouge
Kentucky	1207	Kentucky	Carroll
Kansas	833	Kansas	Shawnee
Kansas	807	Kansas	Ford
Kansas	1304	Kansas	Johnson
Kansas	1300	Kansas	Johnson
Kansas	1299	Kansas	Johnson
Indiana	828	Indiana	Hamilton
Indiana	1918	Indiana	Tippecanoe
Indiana	1352	Indiana	Jefferson
Indiana	1350	Indiana	Allen
Indiana	1289	Indiana	Vigo
Indiana	1273	Indiana	Dubois
Indiana	1267	Indiana	Kosciusko
Illinois	683	Illinois	Cook
Illinois	682	Illinois	Cook
Iowa	544	Iowa	Johnson
Iowa	544	Iowa	Johnson
Iowa	1449	Iowa	Mahaska
Iowa	1447	Iowa	Mahaska
Iowa	1303	Iowa	Woodbury
Hawaii	798	Hawaii	Honolulu
Hawaii	790	Hawaii	Honolulu
Hawaii	710	Hawaii	Kauai
Hawaii	710	Hawaii	Kauai
Hawaii	1175	Hawaii	Maui
Hawaii	1175	Hawaii	Maui
Guam	1448	Guam	Guam
Guam	1446	Guam	Guam
Guam	1440	Guam	Guam
Georgia	684	Georgia	Dekalb
Georgia	1109	Georgia	Lowndes
Florida	706	Florida	Escambia
Florida	574	Florida	Pinellas
Florida	511	Florida	Pinellas
Florida	1631	Florida	Orange
Florida	1552	Florida	Leon
Florida	1551	Florida	Palm Beach

Jurisdiction	Sewershed ID	Reporting Jurisdiction	County
Florida	1502	Florida	Alachua
Florida	1501	Florida	Alachua
Florida	1408	Florida	Seminole, Orange
Florida	1392	Florida	Hillsborough
Connecticut	806	Connecticut	Fairfield
Connecticut	795	Connecticut	Windham
Connecticut	771	Connecticut	Fairfield
Connecticut	291	Connecticut	Fairfield
Connecticut	1618	Connecticut	Hartford
Connecticut	1395	Connecticut	Fairfield
Connecticut	1196	Connecticut	New Haven
Connecticut	1079	Connecticut	New Haven
Colorado	1290	Colorado	Garfield
California	803	California	Santa Cruz
California	802	California	Santa Cruz
California	793	California	San Luis Obispo
California	778	California	Lake
California	724	California	Contra Costa
California	570	California	Sonoma
California	564	California	Alameda
California	506	California	Ventura, Los Angeles
California	495	California	Santa Cruz
California	1561	California	San Luis Obispo
California	1443	California	Imperial
California	1387	California	Monterey
California	1320	California	Ventura
California	1288	California	El Dorado
California	1219	California	Lake
Arizona	808	Arizona	Mohave
Arizona	501	Arizona	La Paz
Arizona	1327	Arizona	Mohave
Arizona	1271	Arizona	Pima
Arkansas	741	Arkansas	Mississippi
Arkansas	446	Arkansas	Pulaski
Arkansas	1565	Arkansas	Ouachita
Arkansas	1558	Arkansas	Hempstead
Arkansas	1544	Arkansas	Garland
Arkansas	1544	Arkansas	Garland
Arkansas	1537	Arkansas	Benton
Arkansas	1536	Arkansas	Greene
Arkansas	1509	Arkansas	White
Arkansas	1461	Arkansas	Saline
Alabama	1778	Alabama	Marshall
Alabama	1464	Alabama	Lee
Alabama	1394	Alabama	Shelby
Alaska	1172	Alaska	Anchorage
Alaska	1158	Alaska	Anchorage
Washington	555	Washington	Snohomish
Washington	661	Washington	Snohomish



Jurisdiction	Sewershed ID	Reporting Jurisdiction	County
Washington	676	Washington	Snohomish, King
Washington	679	Washington	Snohomish
Washington	768	Washington	Snohomish
Washington	804	Washington	Clark
Wisconsin	1277	Wisconsin	Dane
Wisconsin	1349	Wisconsin	Rock
West Virginia	789	West Virginia	Raleigh
Wyoming	1353	Wyoming	Sheridan
Wyoming	188	Wyoming	Teton
Arizona	1054	Arizona	Yuma
Arizona	1055	Arizona	Yuma
Arizona	1055	Arizona	Yuma
Arizona	1212	Arizona	Maricopa
Arizona	1212	Arizona	Maricopa
Arizona	1212	Arizona	Maricopa
California	1188	California	Ventura
California	1361	California	Stanislaus
California	1365	California	Yolo
California	1371	California	Merced
California	1372	California	Merced
California	1513	California	Kern
California	215	California	Los Angeles, Ventura
California	299	California	Orange
California	352	California	Santa Clara
California	356	California	San Bernardino
California	357	California	San Diego
California	363	California	San Mateo, San Francisco
California	363	California	San Mateo, San Francisco
California	383	California	Sacramento
California	393	California	San Mateo
California	77	California	Imperial
California	88	California	Contra Costa
Colorado	1156	Colorado	Pitkin
Colorado	142	Colorado	Larimer
Colorado	1451	Colorado	Chaffee
Colorado	150	Colorado	Larimer
Colorado	1515	Colorado	El Paso
Colorado	1525	Colorado	Weld
Colorado	1588	Colorado	Douglas
Colorado	1592	Colorado	Montrose
Colorado	161	Colorado	Garfield
Colorado	1748	Colorado	Delta
Colorado	1818	Colorado	Boulder
Colorado	226	Colorado	Boulder
Colorado	227	Colorado	Larimer
Colorado	252	Colorado	Denver
Colorado	329	Colorado	Pueblo
Colorado	396	Colorado	San Miguel
Colorado	437	Colorado	Larimer

Jurisdiction	Sewershed ID	Reporting Jurisdiction	County
Colorado	47	Colorado	Pitkin
Colorado	556	Colorado	Morgan
Colorado	576	Colorado	Routt
Colorado	657	Colorado	Summit
Colorado	733	Colorado	Douglas
Colorado	737	Colorado	Alamosa
Colorado	749	Colorado	Eagle
Colorado	751	Colorado	Mesa
Colorado	846	Colorado	Gunnison
Colorado	928	Colorado	Weld
Delaware	1184	Delaware	Kent
Delaware	1186	Delaware	Sussex
Delaware	1191	Delaware	Sussex
Florida	1144	Florida	Orange, Seminole
Florida	1145	Florida	Seminole
Georgia	1072	Georgia	Gwinnett
Georgia	1074	Georgia	Paulding
Georgia	1724	Georgia	Forsyth
Idaho	1023	Idaho	Latah
Idaho	1066	Idaho	Bonneville
Idaho	1129	Idaho	Kootenai
Idaho	1227	Idaho	Bannock
Idaho	1347	Idaho	Minidoka
Idaho	1603	Idaho	Ada
Idaho	1915	Idaho	Nez Perce
Idaho	1916	Idaho	Canyon
Idaho	992	Idaho	Ada
Illinois	1062	Illinois	Kendall
Illinois	1100	Illinois	Du Page
Illinois	1247	Illinois	Lake
Illinois	1252	Illinois	Du Page
Illinois	1316	Illinois	Will
Illinois	1326	Illinois	Saint Clair
Illinois	1586	Illinois	Mchenry
Illinois	1609	Illinois	Du Page
Illinois	1817	Illinois	Iroquois
Illinois	1848	Illinois	Du Page
Illinois	1849	Illinois	Mchenry
Illinois	1944	Illinois	Sangamon
Illinois	462	Illinois	Winnebago
Illinois	602	Illinois	Union
Illinois	604	Illinois	Cass
Illinois	616	Illinois	Christian
Illinois	617	Illinois	Mchenry
Illinois	622	Illinois	Effingham
Illinois	623	Illinois	Clay
Illinois	624	Illinois	Stephenson
Illinois	626	Illinois	Knox
Illinois	627	Illinois	Morgan

Jurisdiction	Sewershed ID	Reporting Jurisdiction	County
Illinois	628	Illinois	Kankakee
Illinois	635	Chicago	Cook
Illinois	635	Illinois	Cook
Illinois	636	Illinois	Cook
Illinois	637	Illinois	Cook
Illinois	639	Illinois	Cook
Illinois	641	Illinois	Cook
Illinois	643	Illinois	Lake
Illinois	644	Illinois	Lake
Illinois	645	Illinois	Lake
Illinois	649	Illinois	Bureau
Illinois	650	Illinois	Adams
Illinois	651	Illinois	Carroll
Illinois	652	Illinois	Shelby
Illinois	653	Illinois	Macoupin
Illinois	654	Illinois	Whiteside
Illinois	674	Chicago	Cook
Illinois	674	Chicago	Cook
Illinois	675	Chicago	Cook
Illinois	731	Illinois	Bureau
Illinois	857	Illinois	Lawrence
Illinois	983	Illinois	Mchenry
Illinois	984	Illinois	Du Page
Indiana	1456	Indiana	Clark
Indiana	1459	Indiana	Jasper
Indiana	1479	Indiana	Elkhart
Indiana	1481	Indiana	Marion
Indiana	1619	Indiana	Marion
Kentucky	1253	Kentucky	Boyd
Kentucky	1257	Kentucky	Magoffin
Kentucky	1579	Kentucky	Franklin
Kentucky	1581	Kentucky	Jessamine
Kentucky	1771	Kentucky	Russell
Kentucky	1772	Kentucky	Mccreary
Kentucky	1773	Kentucky	Powell
Michigan	1036	Michigan	Allegan
Michigan	1040	Michigan	Ottawa
Michigan	1049	Michigan	Allegan
Michigan	1050	Michigan	Saint Joseph
Michigan	1089	Michigan	Chippewa
Michigan	1090	Michigan	Manistee
Michigan	1090	Michigan	Manistee
Michigan	1090	Michigan	Manistee
Michigan	1093	Michigan	Mackinac
Michigan	1104	Michigan	Mackinac
Michigan	1105	Michigan	Menominee
Michigan	1106	Michigan	Iosco
Michigan	1125	Michigan	Marquette
Michigan	1125	Michigan	Marquette

Jurisdiction	Sewershed ID	Reporting Jurisdiction	County
Michigan	1166	Michigan	Huron
Michigan	1214	Michigan	Kent
Michigan	1215	Michigan	Kent
Michigan	1216	Michigan	Midland
Michigan	1217	Michigan	Kent
Michigan	1239	Michigan	Isabella
Michigan	1585	Michigan	Kent
Michigan	1597	Michigan	Mecosta
Michigan	1627	Michigan	Gogebic
Michigan	1729	Michigan	Macomb
Michigan	1729	Michigan	Macomb
Michigan	1729	Michigan	Macomb
Michigan	1730	Michigan	Macomb
Michigan	1731	Michigan	Macomb
Michigan	1942	Michigan	Macomb
Michigan	761	Michigan	Lenawee
Michigan	762	Michigan	Washtenaw
Michigan	799	Michigan	Washtenaw
Michigan	822	Michigan	Delta
Michigan	861	Michigan	Saginaw
Michigan	888	Michigan	Calhoun
Michigan	889	Michigan	Ottawa
Michigan	891	Michigan	Kalamazoo
Michigan	891	Michigan	Kalamazoo
Michigan	891	Michigan	Kalamazoo
Michigan	891	Michigan	Kalamazoo
Michigan	891	Michigan	Kalamazoo
Michigan	891	Michigan	Kalamazoo
Michigan	891	Michigan	Kalamazoo
Michigan	897	Michigan	Oakland, Macomb
Missouri	114	Missouri	Henry
Missouri	119	Missouri	Boone
Missouri	130	Missouri	Stoddard
Missouri	132	Missouri	Saint Charles
Missouri	133	Missouri	Saint Charles
Missouri	156	Missouri	Madison
Missouri	191	Missouri	Newton
Missouri	197	Missouri	Clay, Platte
Missouri	199	Missouri	Platte, Clay
Missouri	213	Missouri	Barton
Missouri	238	Missouri	Saline
Missouri	240	Missouri	Webster
Missouri	242	Missouri	Nodaway
Missouri	253	Missouri	Audrain
Missouri	259	Missouri	Barry, Lawrence
Missouri	264	Missouri	Saint Louis, Saint Louis City
Missouri	267	Missouri	Saint Louis
Missouri	268	Missouri	Saint Louis
Missouri	269	Missouri	Jefferson, Saint Louis

Jurisdiction	Sewershed ID	Reporting Jurisdiction	County
Missouri	270	Missouri	Saint Louis, Saint Charles
Missouri	279	Missouri	Newton
Missouri	293	Missouri	Jefferson, Saint Louis
Missouri	306	Missouri	Franklin, Saint Louis
Missouri	348	Missouri	Phelps
Missouri	355	Missouri	Andrew
Missouri	358	Missouri	Pettis
Missouri	360	Missouri	Pettis
Missouri	385	Missouri	Buchanan
Missouri	386	Missouri	Saint Charles
Missouri	423	Missouri	Johnson
Missouri	429	Missouri	Franklin
Missouri	64	Missouri	Saint Francois
Missouri	69	Missouri	Taney
Missouri	71	Missouri	Linn
Missouri	78	Missouri	Caldwell, Clinton, Dekalb
Missouri	81	Missouri	Cape Girardeau, Scott
Missouri	82	Missouri	Carroll
Missouri	83	Missouri	Jasper
Missouri	87	Missouri	Barry
Missouri	95	Missouri	Livingston
Montana	1032	Montana	Gallatin
Montana	1035	Montana	Gallatin
Montana	1310	Montana	Gallatin
Montana	976	Montana	Lewis And Clark
Montana	977	Montana	Lewis And Clark
North Carolina	111	North Carolina	Wilson
North Carolina	1521	North Carolina	Mecklenburg
North Carolina	1523	North Carolina	Durham
North Carolina	167	North Carolina	Pitt
North Carolina	237	North Carolina	Mcdowell
North Carolina	332	North Carolina	Wake
North Carolina	335	North Carolina	Wake
North Carolina	451	North Carolina	New Hanover
North Carolina	86	North Carolina	Wake
Nebraska	1493	Nebraska	Holt
Nebraska	916	Nebraska	Platte
Nebraska	917	Nebraska	Dodge
Nebraska	919	Nebraska	Adams
Nebraska	921	Nebraska	Douglas
Nebraska	923	Nebraska	Douglas, Sarpy
Nebraska	924	Nebraska	Scotts Bluff
Nebraska	987	Nebraska	Stanton, Madison
Nebraska	988	Nebraska	Lincoln
New Mexico	1339	New Mexico	Sandoval
New Mexico	1510	New Mexico	Curry
New York	1000	New York	Erie
New York	1002	New York	Erie
New York	1003	New York	Monroe

Jurisdiction	Sewershed ID	Reporting Jurisdiction	County
New York	1006	New York	Chautauqua
New York	1010	New York	Monroe
New York	1011	New York	Cattaraugus
New York	1012	New York	Erie
New York	1021	New York	Nassau
New York	1041	New York	Suffolk
New York	1043	New York	Suffolk
New York	1078	New York	Wayne
New York	1097	New York	Dutchess
New York	1098	New York	Sullivan
New York	1149	New York	Tioga
New York	1151	New York	Oneida
New York	1153	New York	Livingston
New York	1170	New York	Greene
New York	1213	New York	Ontario
New York	1242	New York	Schoharie
New York	1306	New York	Nassau
New York	1336	New York	Chemung
New York	1400	New York	Broome
New York	1400	New York	Broome
New York	1401	New York	Rockland
New York	1402	New York	Clinton
New York	1403	New York	Rockland
New York	1483	New York	Westchester
New York	1485	New York	Westchester
New York	1487	New York	Westchester
New York	1489	New York	Westchester
New York	1800	New York	Dutchess
New York	1853	New York	Suffolk
New York	1854	New York	Suffolk
New York	1917	New York	Saint Lawrence
New York	1936	New York	Clinton
New York	1938	New York	Suffolk
New York	1939	New York	Suffolk
New York	426	New York	Orange
New York	430	New York	Jefferson
New York	479	New York	Chenango
New York	512	New York	Cayuga
New York	516	New York	Madison
New York	517	New York	Livingston
New York	518	New York	Steuben
New York	521	New York	Onondaga
New York	528	New York	Otsego
New York	52	New York	Steuben
New York	530	New York	Madison
New York	567	New York	Fulton
New York	690	New York	Cortland
New York	691	New York	Herkimer
New York	692	New York	Saint Lawrence

Jurisdiction	Sewershed ID	Reporting Jurisdiction	County
New York	693	New York	Ulster
New York	717	New York	Montgomery
New York	719	New York	Nassau
New York	720	New York	Lewis
New York	738	New York	Putnam
New York	739	New York	Orange
New York	740	New York	Oneida
New York	742	New York	Albany
New York	836	New York	Nassau
New York	837	New York	Rockland
New York	838	New York	Rockland
New York	974	New York	Yates
New York	999	New York	Chautauqua
Ohio	101	Ohio	Preble
Ohio	102	Ohio	Marion
Ohio	108	Ohio	Erie
Ohio	121	Ohio	Ashtabula
Ohio	124	Ohio	Coshocton
Ohio	129	Ohio	Defiance
Ohio	131	Ohio	Tuscarawas
Ohio	134	Ohio	Montgomery
Ohio	141	Ohio	Belmont
Ohio	147	Ohio	Hancock
Ohio	1608	Ohio	Hocking
Ohio	168	Ohio	Darke
Ohio	170	Ohio	Butler
Ohio	187	Ohio	Franklin
Ohio	204	Ohio	Portage
Ohio	219	Ohio	Allen
Ohio	221	Ohio	Hamilton
Ohio	222	Ohio	Medina
Ohio	225	Ohio	Lorain
Ohio	228	Ohio	Lucas
Ohio	241	Ohio	Union
Ohio	255	Ohio	Hamilton
Ohio	276	Ohio	Cuyahoga
Ohio	277	Ohio	Cuyahoga
Ohio	278	Ohio	Cuyahoga
Ohio	282	Ohio	Licking
Ohio	311	Ohio	Wood
Ohio	322	Ohio	Ottawa
Ohio	374	Ohio	Franklin
Ohio	382	Ohio	Clark
Ohio	388	Ohio	Jefferson
Ohio	422	Ohio	Trumbull
Ohio	428	Ohio	Fayette
Ohio	43	Ohio	Fulton
Ohio	455	Ohio	Mahoning
Ohio	456	Ohio	Muskingum

Jurisdiction	Sewershed ID	Reporting Jurisdiction	County
Ohio	46	Ohio	Ashtabula
Ohio	48	Ohio	Athens
Ohio	67	Ohio	Wood
Ohio	73	Ohio	Williams
Ohio	74	Ohio	Crawford
Ohio	975	Ohio	Greene
Ohio	98	Ohio	Pickaway
Oregon	469	Oregon	Jackson
Oregon	929	Oregon	Linn
Oregon	930	Oregon	Clatsop
Oregon	931	Oregon	Baker
Oregon	932	Oregon	Deschutes
Oregon	933	Oregon	Clackamas
Oregon	937	Oregon	Lincoln
Oregon	938	Oregon	Yamhill
Oregon	939	Oregon	Lincoln
Oregon	941	Oregon	Marion
Oregon	944	Oregon	Washington
Oregon	950	Oregon	Josephine
Oregon	952	Oregon	Hood River
Oregon	956	Oregon	Jackson
Oregon	957	Oregon	Coos
Oregon	958	Oregon	Malheur
Oregon	966	Oregon	Columbia
Oregon	970	Oregon	Jefferson
Pennsylvania	1366	Pennsylvania	Dauphin
Pennsylvania	1375	Pennsylvania	York
Pennsylvania	1376	Pennsylvania	Westmoreland
Pennsylvania	1390	Pennsylvania	Monroe
Pennsylvania	1529	Pennsylvania	Indiana
Pennsylvania	1530	Pennsylvania	Centre
Pennsylvania	1777	Pennsylvania	Monroe
Pennsylvania	1787	Pennsylvania	Chester
South Carolina	906	South Carolina	Lexington
Texas	113	Houston	Harris
Texas	165	Houston	Harris, Fort Bend
Texas	176	Houston	Harris
Texas	1933	Texas	Denton
Texas	272	Houston	Harris
Texas	287	Houston	Harris
Texas	288	Houston	Harris
Texas	350	Houston	Harris
Texas	373	Houston	Harris
Texas	375	Houston	Harris
Texas	409	Houston	Harris
Texas	434	Houston	Harris, Fort Bend
Texas	446	Houston	Harris
Utah	1077	Utah	Wasatch
Utah	17	Utah	Utah



Jurisdiction	Sewershed ID	Reporting Jurisdiction	County
Utah	1	Utah	Washington
Utah	23	Utah	Summit
Utah	25	Utah	Davis
Utah	27	Utah	Washington
Utah	29	Utah	Utah
Utah	30	Utah	Salt Lake
Utah	31	Utah	Utah
Utah	32	Utah	Tooele
Utah	34	Utah	Box Elder
Utah	3	Utah	Box Elder
Utah	6	Utah	Davis
Utah	7	Utah	Salt Lake
Virginia	1237	Virginia	Tazewell
Virginia	180	Virginia	Chesapeake City, Virginia Beach City, Norfolk City, Portsmouth City
Virginia	1827	Virginia	Prince William, Fairfax, Stafford
Virginia	1828	Virginia	Stafford
Virginia	1829	Virginia	Bedford, Campbell, Amherst
Virginia	1830	Virginia	Albemarle
Virginia	1832	Virginia	Frederick
Virginia	1838	Virginia	Manassas City, Fairfax City, Fauquier, Fairfax, Prince William, Loudoun, Manassas Park City
Virginia	1859	Virginia	Henrico
Virginia	1859	Virginia	Henrico
Virginia	342	Virginia	Goochland, Henrico, Richmond City
Virginia	42	Virginia	Prince William, Stafford
Virginia	42	Virginia	Prince William, Stafford
Virginia	454	Virginia	Washington
Washington	1398	Washington	Grant
Washington	1399	Washington	Jefferson
Washington	1512	Washington	Whitman
Washington	1757	Washington	Thurston
Washington	753	Washington	Franklin
Washington	759	Washington	Spokane
Wisconsin	115	Wisconsin	Waupaca
Wisconsin	136	Wisconsin	Chippewa, Eau Claire
Wisconsin	182	Wisconsin	Saint Croix
Wisconsin	231	Wisconsin	Dane
Wisconsin	232	Wisconsin	Manitowoc
Wisconsin	236	Wisconsin	Marinette
Wisconsin	239	Wisconsin	Marathon, Wood
Wisconsin	313	Wisconsin	Marinette
Wisconsin	318	Wisconsin	Grant
Wisconsin	331	Wisconsin	Racine
Wisconsin	344	Wisconsin	Saint Croix, Pierce
Wisconsin	364	Wisconsin	Sheboygan
Wisconsin	391	Wisconsin	Dane
Wisconsin	420	Wisconsin	Vernon
Wisconsin	44	Wisconsin	Ashland

Jurisdiction	Sewershed ID	Reporting Jurisdiction	County
Wisconsin	60	Wisconsin	Jackson
Wisconsin	696	Wisconsin	Jefferson, Dodge
West Virginia	1248	West Virginia	Randolph
West Virginia	1439	West Virginia	Mason
West Virginia	1862	West Virginia	Putnam
West Virginia	1865	West Virginia	Cabell
West Virginia	387	West Virginia	Monongalia
West Virginia	459	West Virginia	Kanawha
West Virginia	460	West Virginia	Jefferson
West Virginia	463	West Virginia	Marshall
West Virginia	465	West Virginia	Wood
West Virginia	687	West Virginia	Harrison
West Virginia	735	West Virginia	Taylor
West Virginia	91	West Virginia	Kanawha
Alabama	1664	Alabama	Jefferson
Alabama	1688	Alabama	Jefferson
Alabama	1719	Alabama	Jefferson
California	1371	California	Merced
California	1665	California	San Mateo
California	1668	California	Contra Costa
California	1669	California	Marin
California	1670	California	Marin
California	1676	California	San Luis Obispo
California	1677	California	San Mateo
California	1678	California	Santa Cruz
California	1679	California	Santa Cruz
California	1685	California	Alameda
California	1687	California	Sonoma
California	1693	California	Los Angeles
California	1694	California	Los Angeles
California	1698	California	Santa Barbara
California	1709	California	San Bernardino
California	1711	California	Marin
California	1712	California	San Mateo
California	1713	California	Napa
California	1717	California	Solano
California	1720	California	Contra Costa
California	1733	California	Alameda
California	1734	California	Alameda
California	1764	California	Stanislaus
California	1785	California	San Diego
California	1789	California	Orange
California	1792	California	Orange
California	1946	California	Santa Clara
California	352	California	Santa Clara
California	353	California	Santa Clara
California	362	California	San Francisco, San Mateo
California	383	California	Sacramento
California	393	California	San Mateo

Jurisdiction	Sewershed ID	Reporting Jurisdiction	County
California	834	California	Riverside
Colorado	1704	Colorado	Douglas
Colorado	1705	Colorado	Douglas
Florida	1686	Florida	Orange
Florida	1702	Florida	Orange
Florida	1715	Florida	Orange
Florida	1840	Florida	Miami-Dade
Florida	1868	Florida	Miami-Dade
Georgia	1666	Georgia	Fulton
Georgia	1692	Georgia	Fulton
Georgia	1714	Georgia	Chattahoochee, Muscogee
Georgia	1740	Georgia	Fulton
Georgia	1741	Georgia	Fulton
Georgia	1742	Georgia	Fulton
Iowa	1839	Iowa	Clinton
Iowa	1866	Iowa	Marshall
Iowa	1867	Iowa	Johnson
Idaho	1672	Idaho	Kootenai
Illinois	1689	Illinois	Du Page
Indiana	1681	Indiana	St Joseph
Indiana	1739	Indiana	Clark
Indiana	772	Indiana	Monroe
Kansas	1710	Kansas	Saline
Kansas	1811	Kansas	Wyandotte
Kansas	1812	Kansas	Wyandotte
Kentucky	1701	Kentucky	Jefferson
Massachusetts	1780	Massachusetts	Worcester, Norfolk, Suffolk, Plymouth, Middlesex
Maine	1707	Maine	Cumberland
Maine	1754	Maine	Cumberland
Michigan	1671	Michigan	Washtenaw
Michigan	1870	Michigan	Grand Traverse
Minnesota	494	Minnesota	Olmsted
New Hampshire	1706	New Hampshire	Merrimack
New Hampshire	497	New Hampshire	Merrimack
New Jersey	1763	New Jersey	Monmouth
New Jersey	788	New Jersey	Essex, Bergen, Hudson, Union, Passaic
Ohio	1810	Ohio	Portage, Summit
Texas	1673	Texas	Dallas
Texas	1683	Texas	Dallas
Texas	1761	Texas	Potter, Randall
Texas	1762	Texas	Potter, Randall
Texas	1765	Texas	Wichita
Texas	1807	Texas	Cooke
Texas	1947	Texas	Montgomery
Texas	1948	Texas	Montgomery
Texas	865	Texas	Webb
Texas	867	Texas	Webb
Utah	1736	Utah	Salt Lake
Virginia	1786	Virginia	Carroll

Jurisdiction	Sewershed ID	Reporting Jurisdiction	County
Alaska	1490	Alaska	Juneau
Alaska	1491	Alaska	Juneau
Alabama	1333	Alabama	Colbert
Arkansas	1442	Arkansas	Lonoke
Arkansas	1444	Arkansas	Pulaski
Arkansas	1444	Arkansas	Pulaski
Arkansas	1462	Arkansas	Washington
Arkansas	1465	Arkansas	Washington
Arkansas	1472	Arkansas	Saint Francis
Arkansas	1472	Arkansas	Saint Francis
Arkansas	1540	Arkansas	Boone
Arkansas	1542	Arkansas	Pulaski
Arkansas	1543	Arkansas	Pulaski
Arkansas	1545	Arkansas	Pulaski
Arkansas	1546	Arkansas	Pulaski
Arkansas	1548	Arkansas	Jefferson
Arkansas	1550	Arkansas	Pope
Arkansas	1558	Arkansas	Hempstead
Arizona	1334	Arizona	Maricopa
Arizona	1334	Arizona	Maricopa
Arizona	1382	Arizona	Maricopa
Arizona	1383	Arizona	Maricopa
Arizona	590	Arizona	Pima
Arizona	715	Arizona	Pima
California	1173	California	Contra Costa
California	1199	California	Kings
California	1230	California	San Luis Obispo
California	1230	California	San Luis Obispo
California	1409	California	San Bernardino
California	1560	California	San Luis Obispo
California	1593	California	San Luis Obispo
California	1759	California	San Luis Obispo
California	1822	California	Marin
California	461	California	Humboldt
California	570	California	Sonoma
California	763	California	Santa Cruz
California	779	California	Los Angeles
California	834	California	Riverside
Connecticut	1163	Connecticut	New London
Connecticut	534	Connecticut	Fairfield
Connecticut	686	Connecticut	New Haven
Connecticut	795	Connecticut	Windham
Connecticut	832	Connecticut	New London
District of Columbia	486	District of Columbia	District Of Columbia
District of Columbia	486	District of Columbia	District Of Columbia
Florida	1410	Florida	Palm Beach, Martin
Florida	1606	Florida	Lee

Jurisdiction	Sewershed ID	Reporting Jurisdiction	County
Florida	1613	Florida	Sarasota
Florida	668	Florida	Miami-Dade
Florida	669	Florida	Orange
Florida	670	Florida	Orange
Florida	671	Florida	Orange
Florida	711	Florida	Miami-Dade
Florida	781	Florida	Miami-Dade
Georgia	476	Georgia	Richmond
Guam	1441	Guam	Guam
Guam	1450	Guam	Guam
Hawaii	1181	Hawaii	Maui
Hawaii	1203	Hawaii	Honolulu
Hawaii	1204	Hawaii	Honolulu
Hawaii	1205	Hawaii	Maui
Hawaii	1208	Hawaii	Honolulu
Hawaii	1221	Hawaii	Hawaii
Hawaii	1337	Hawaii	Hawaii
Iowa	105	Iowa	Johnson
Iowa	1496	Iowa	Winneshiek
Illinois	462	Illinois	Winnebago
Illinois	546	Illinois	Kankakee
Indiana	1162	Indiana	Hamilton
Indiana	1162	Indiana	Hamilton
Indiana	1269	Indiana	Lake
Indiana	1273	Indiana	Dubois
Indiana	1281	Indiana	Delaware
Indiana	1293	Indiana	St Joseph
Indiana	1314	Indiana	Wayne
Indiana	1318	Indiana	Huntington
Indiana	1319	Indiana	Howard
Indiana	678	Indiana	Bartholomew
Indiana	765	Indiana	Monroe
Indiana	772	Indiana	Monroe
Kansas	1292	Kansas	Johnson
Kansas	1305	Kansas	Johnson
Kansas	472	Kansas	Reno
Kansas	787	Kansas	Shawnee
Kentucky	810	Kentucky	Estill
Louisiana	1229	Louisiana	Rapides
Louisiana	1497	Louisiana	Jefferson
Louisiana	1614	Louisiana	Jefferson
Louisiana	1615	Louisiana	Saint Tammany
Louisiana	1626	Louisiana	Jefferson
Louisiana	1632	Louisiana	Iberia
Louisiana	1651	Louisiana	Lafayette
Louisiana	1656	Louisiana	Jefferson
Louisiana	792	Louisiana	Orleans
Massachusetts	1180	Massachusetts	Worcester
Massachusetts	1311	Massachusetts	Bristol

Jurisdiction	Sewershed ID	Reporting Jurisdiction	County
Massachusetts	1384	Massachusetts	Middlesex
Massachusetts	1495	Massachusetts	Worcester
Maryland	1260	Maryland	Anne Arundel
Maryland	1268	Maryland	Anne Arundel
Maryland	1278	Maryland	Anne Arundel
Maryland	1285	Maryland	Anne Arundel
Maryland	561	Maryland	Washington
Maine	347	Maine	Knox
Maine	475	Maine	Piscataquis
Maine	484	Maine	Franklin
Maine	507	Maine	Oxford
Maine	65	Maine	Lincoln
Minnesota	1108	Minnesota	Dakota, Scott
Minnesota	993	Minnesota	Scott, Dakota
Missouri	1559	Missouri	Jefferson
Mississippi	1393	Mississippi	Lafayette
Montana	562	Montana	Missoula
North Carolina	1179	North Carolina	Watauga
North Carolina	421	North Carolina	Duplin, Pender
North Carolina	492	North Carolina	Henderson
North Carolina	536	North Carolina	Swain, Jackson
North Carolina	539	North Carolina	Vance
North Carolina	575	North Carolina	Mitchell
Nebraska	1312	Nebraska	Keith
Nebraska	1411	Nebraska	Saunders
New Hampshire	402	New Hampshire	Sullivan
New Jersey	1322	New Jersey	Essex, Union
New Jersey	1385	New Jersey	Hudson
New Jersey	1605	New Jersey	Bergen
New Jersey	784	New Jersey	Somerset, Union, Middlesex
New Jersey	788	New Jersey	Passaic, Essex, Hudson, Bergen
New Mexico	1177	New Mexico	Santa Fe
New Mexico	1177	New Mexico	Santa Fe
New Mexico	853	New Mexico	Los Alamos
New Mexico	854	New Mexico	Los Alamos
Nevada	663	Nevada	Clark
New York City	485	New York City	Kings
New York City	487	New York City	Queens
New York City	503	New York City	Queens
New York City	545	New York City	Queens
New York City	550	New York City	Richmond
New York City	553	New York City	Kings
Oklahoma	767	Oklahoma	Garfield
Oklahoma	769	Oklahoma	Comanche
Oregon	1164	Oregon	Clackamas, Washington
Oregon	1200	Oregon	Multnomah, Washington
Oregon	1201	Oregon	Washington, Multnomah, Clackamas
Pennsylvania	1161	Pennsylvania	Lehigh
Pennsylvania	1388	Pennsylvania	Allegheny

Jurisdiction	Sewershed ID	Reporting Jurisdiction	County
Pennsylvania	1454	Pennsylvania	Bucks
Rhode Island	464	Rhode Island	Providence
Rhode Island	76	Rhode Island	Providence
Rhode Island	835	Rhode Island	Bristol
South Carolina	1159	South Carolina	Florence, Darlington
South Carolina	1549	South Carolina	Greenville
South Carolina	600	South Carolina	Greenwood
South Dakota	1165	South Dakota	Yankton
South Dakota	493	South Dakota	Beadle
Tennessee	1283	Tennessee	Davidson
Tennessee	1329	Tennessee	Shelby
Tennessee	1508	Tennessee	Hawkins, Sullivan
Tennessee	1539	Tennessee	Sullivan
Tennessee	496	Tennessee	Bradley
Texas	1140	Texas	Travis
Texas	1210	Texas	Dallas
Texas	1494	Texas	Galveston
Texas	593	Texas	Galveston
Texas	681	Texas	El Paso
Texas	805	Texas	Dallas
Texas	811	Texas	Bexar
Texas	847	Texas	Bexar
Texas	848	Texas	Bexar
Texas	863	Texas	Webb
Utah	1270	Utah	Tooele
Virginia	1113	Virginia	Arlington
Virginia	1202	Virginia	Frederick
Virginia	1259	Virginia	Clifton Forge City
Virginia	1275	Virginia	Hampton City, Newport News City
Virginia	1338	Virginia	Mecklenburg
Virginia	540	Virginia	Henry
Vermont	1080	Vermont	Chittenden
Vermont	1452	Vermont	Caledonia
Vermont	1520	Vermont	Washington
Vermont	701	Vermont	Chittenden
Vermont	770	Vermont	Franklin
Washington	1084	Washington	Clark
Washington	510	Washington	Clark
Wyoming	1317	Wyoming	Sweetwater
Wyoming	1353	Wyoming	Sheridan
Arizona	1053	Arizona	Yuma
Arizona	1059	Arizona	Yuma
Arizona	1061	Arizona	Yuma
Arizona	1212	Arizona	Maricopa
Arizona	1212	Arizona	Maricopa
Arizona	1212	Arizona	Maricopa
Arizona	1212	Arizona	Maricopa
Arizona	1212	Arizona	Maricopa
California	1019	California	Lake

Jurisdiction	Sewershed ID	Reporting Jurisdiction	County
California	126	California	Yolo
California	1373	California	Stanislaus
California	1377	California	Yolo
California	1378	California	Yolo
California	137	California	Alameda, Contra Costa
California	1524	California	Plumas
California	158	California	Fresno
California	211	California	Los Angeles
California	305	California	Santa Clara
California	353	California	Santa Clara
California	354	California	Santa Clara
California	362	California	San Francisco, San Mateo
California	362	California	San Mateo, San Francisco
California	59	California	Kern
Colorado	1024	Colorado	Archuleta
Colorado	1111	Colorado	Teller
Colorado	1135	Colorado	Teller
Colorado	1154	Colorado	Pitkin
Colorado	116	Colorado	El Paso
Colorado	117	Colorado	El Paso
Colorado	122	Colorado	Summit
Colorado	1514	Colorado	El Paso
Colorado	1517	Colorado	El Paso
Colorado	1518	Colorado	El Paso
Colorado	151	Colorado	Larimer
Colorado	152	Colorado	Larimer
Colorado	1563	Colorado	Elbert
Colorado	1591	Colorado	Otero
Colorado	163	Colorado	Weld
Colorado	224	Colorado	Boulder, Weld
Colorado	251	Colorado	Denver
Colorado	368	Colorado	Adams
Colorado	370	Colorado	Larimer
Colorado	372	Colorado	Arapahoe, Denver
Colorado	408	Colorado	Summit
Colorado	49	Colorado	Arapahoe, Adams
Colorado	578	Colorado	Las Animas
Colorado	58	Colorado	Weld, Larimer
Colorado	656	Colorado	La Plata
Colorado	66	Colorado	Boulder
Colorado	72	Colorado	Broomfield
Colorado	747	Colorado	Arapahoe
Colorado	748	Colorado	El Paso
Colorado	841	Colorado	Adams
Colorado	843	Colorado	Eagle
Colorado	844	Colorado	Eagle
Colorado	845	Colorado	Summit
Colorado	887	Colorado	Summit
Delaware	1183	Delaware	Sussex



Jurisdiction	Sewershed ID	Reporting Jurisdiction	County
Delaware	1185	Delaware	Sussex
Delaware	1187	Delaware	New Castle
Delaware	1192	Delaware	Sussex
Delaware	1194	Delaware	New Castle
Georgia	1071	Georgia	Paulding
Georgia	1073	Georgia	Cobb
Georgia	1309	Georgia	Newton
Georgia	1723	Georgia	Laurens
Georgia	1728	Georgia	Cobb
Georgia	1747	Georgia	Lowndes
Georgia	1819	Georgia	Clarke
Georgia	1820	Georgia	Floyd
Idaho	1067	Idaho	Twin Falls
Idaho	1225	Idaho	Bingham
Idaho	1228	Idaho	Caribou
Idaho	1249	Idaho	Blaine
Idaho	1406	Idaho	Elmore
Idaho	1801	Idaho	Payette
Idaho	1802	Idaho	Elmore
Idaho	1914	Idaho	Kootenai
Idaho	818	Idaho	Ada
Illinois	1243	Illinois	Du Page
Illinois	1527	Illinois	Kendall
Illinois	1610	Illinois	Washington
Illinois	1816	Illinois	Madison
Illinois	1847	Illinois	Du Page
Illinois	1943	Illinois	Sangamon
Illinois	603	Illinois	Kane
Illinois	605	Illinois	Saint Clair
Illinois	606	Illinois	Saint Clair
Illinois	607	Illinois	Boone
Illinois	611	Illinois	Fulton
Illinois	612	Illinois	Greene
Illinois	619	Illinois	Vermilion
Illinois	620	Illinois	Macon
Illinois	621	Illinois	Perry
Illinois	625	Illinois	Jo Daviess
Illinois	631	Illinois	Mcdonough
Illinois	632	Illinois	Cook
Illinois	633	Illinois	Warren
Illinois	634	Illinois	Jefferson
Illinois	635	Chicago	Cook
Illinois	638	Illinois	Cook
Illinois	642	Illinois	Du Page
Illinois	647	Illinois	Peoria
Illinois	655	Illinois	Champaign
Illinois	675	Chicago	Cook
Illinois	675	Chicago	Cook
Illinois	675	Chicago	Cook

Jurisdiction	Sewershed ID	Reporting Jurisdiction	County
Illinois	697	Illinois	Rock Island
Illinois	698	Illinois	Rock Island
Illinois	699	Illinois	Tazewell
Illinois	871	Illinois	La Salle
Illinois	894	Illinois	Lee
Illinois	972	Illinois	Saint Clair
Illinois	978	Illinois	Mclean
Illinois	979	Illinois	Mclean
Illinois	980	Illinois	Mclean
Illinois	981	Illinois	De Kalb
Illinois	982	Illinois	Cook
Indiana	1458	Indiana	Noble
Indiana	1480	Indiana	Rush
Indiana	1480	Indiana	Rush
Indiana	1482	Indiana	Porter
Kentucky	1254	Kentucky	Rowan
Kentucky	1255	Kentucky	Johnson
Kentucky	1582	Kentucky	Caldwell
Kentucky	1583	Kentucky	Allen
Kentucky	1767	Kentucky	Lee
Kentucky	1770	Kentucky	Christian
Michigan	1018	Michigan	Bay
Michigan	1020	Michigan	Dickinson
Michigan	1039	Michigan	Saint Joseph
Michigan	1040	Michigan	Ottawa
Michigan	1048	Michigan	Calhoun
Michigan	1086	Michigan	Ottawa
Michigan	1087	Michigan	Genesee
Michigan	1088	Michigan	Ottawa
Michigan	1091	Michigan	Schoolcraft
Michigan	1092	Michigan	Chippewa
Michigan	1096	Michigan	Muskegon
Michigan	1102	Michigan	Dickinson
Michigan	1121	Michigan	Saginaw
Michigan	1122	Michigan	Otsego
Michigan	1125	Michigan	Marquette
Michigan	1125	Michigan	Marquette
Michigan	1125	Michigan	Marquette
Michigan	1136	Michigan	Clare
Michigan	1138	Michigan	Isabella
Michigan	1155	Michigan	Tuscola
Michigan	1167	Michigan	Kent
Michigan	1168	Michigan	Kent
Michigan	1315	Michigan	Macomb
Michigan	1598	Michigan	Wexford
Michigan	1599	Michigan	Eaton
Michigan	1600	Michigan	Mason
Michigan	1729	Michigan	Wayne
Michigan	1729	Michigan	Oakland

Jurisdiction	Sewershed ID	Reporting Jurisdiction	County
Michigan	1729	Michigan	Oakland
Michigan	1729	Michigan	Macomb
Michigan	1729	Michigan	Macomb
Michigan	1729	Michigan	Macomb
Michigan	1729	Michigan	Macomb
Michigan	1815	Michigan	Arenac
Michigan	1941	Michigan	Macomb
Michigan	756	Michigan	Kent
Michigan	757	Michigan	Jackson
Michigan	800	Michigan	Genesee
Michigan	801	Michigan	Grand Traverse
Michigan	823	Michigan	Houghton
Michigan	860	Michigan	Gratiot
Michigan	874	Michigan	Emmet
Michigan	889	Michigan	Ottawa
Michigan	889	Michigan	Ottawa
Michigan	889	Michigan	Ottawa
Michigan	890	Michigan	Ottawa
Michigan	891	Michigan	Kalamazoo
Michigan	891	Michigan	Kalamazoo
Michigan	891	Michigan	Kalamazoo
Michigan	896	Michigan	Wayne, Macomb
Michigan	898	Michigan	Oakland, Wayne
Missouri	139	Missouri	Miller
Missouri	143	Missouri	Saint Francois
Missouri	159	Missouri	Callaway
Missouri	171	Missouri	Marion, Ralls
Missouri	190	Missouri	Cole, Callaway
Missouri	192	Missouri	Jasper
Missouri	194	Missouri	Clay, Platte
Missouri	195	Missouri	Cass, Jackson, Johnson
Missouri	196	Missouri	Jackson
Missouri	198	Missouri	Clay
Missouri	200	Missouri	Johnson, Jackson, Wyandotte
Missouri	202	Missouri	Dunklin
Missouri	218	Missouri	Clay
Missouri	265	Missouri	Saint Louis
Missouri	266	Missouri	Jefferson, Saint Louis
Missouri	280	Missouri	Vernon
Missouri	284	Missouri	Christian
Missouri	312	Missouri	Perry
Missouri	317	Missouri	Platte
Missouri	321	Missouri	Butler
Missouri	359	Missouri	Pettis
Missouri	365	Missouri	New Madrid, Scott
Missouri	380	Missouri	Greene
Missouri	404	Missouri	Lincoln
Missouri	407	Missouri	Franklin
Missouri	424	Missouri	Johnson

Jurisdiction	Sewershed ID	Reporting Jurisdiction	County
Missouri	438	Missouri	Saint Charles
Missouri	441	Missouri	Howell
Missouri	63	Missouri	Polk
Missouri	68	Missouri	Taney
Missouri	827	Missouri	Dent
Missouri	858	Missouri	Jackson, Cass
North Carolina	144	North Carolina	Cumberland
North Carolina	1611	North Carolina	Davidson, Guilford
North Carolina	166	North Carolina	Guilford
North Carolina	216	North Carolina	Scotland
North Carolina	271	North Carolina	Buncombe, Henderson
North Carolina	303	North Carolina	Orange, Durham
North Carolina	334	North Carolina	Wake
North Carolina	345	North Carolina	Northampton, Halifax
North Carolina	369	North Carolina	Orange, Durham
North Carolina	405	North Carolina	Jackson
North Carolina	450	North Carolina	New Hanover
North Carolina	452	North Carolina	Forsyth
North Carolina	53	North Carolina	Carteret
North Carolina	84	North Carolina	Wake
North Carolina	85	North Carolina	Wake
North Carolina	92	North Carolina	Mecklenburg
North Carolina	93	North Carolina	Mecklenburg
North Carolina	94	North Carolina	Mecklenburg
Nebraska	1331	Nebraska	York
Nebraska	1799	Nebraska	Nemaha
Nebraska	915	Nebraska	Dawes
Nebraska	918	Nebraska	Hall
Nebraska	920	Nebraska	Buffalo
Nebraska	922	Nebraska	Lancaster
Nebraska	925	Nebraska	Lancaster
Nebraska	926	Nebraska	Wayne
New Mexico	1340	New Mexico	Dona Ana
New Mexico	1362	New Mexico	Luna
New Mexico	1374	New Mexico	Grant
New Mexico	1418	New Mexico	San Juan
New Mexico	1475	New Mexico	Otero
New York	1009	New York	Niagara
New York	1013	New York	Erie
New York	1013	New York	Erie
New York	1022	New York	Schenectady
New York	1042	New York	Columbia
New York	1044	New York	Suffolk
New York	1045	New York	Essex
New York	1068	New York	Tompkins
New York	1099	New York	Wyoming
New York	1112	New York	Albany
New York	1150	New York	Suffolk
New York	1171	New York	Schoharie

Jurisdiction	Sewershed ID	Reporting Jurisdiction	County
New York	123	New York	Steuben
New York	1325	New York	Franklin
New York	1335	New York	Chemung
New York	1404	New York	Rockland
New York	1405	New York	Rockland
New York	1460	New York	Orange
New York	1484	New York	Westchester
New York	1486	New York	Westchester
New York	1488	New York	Westchester
New York	1504	New York	Sullivan
New York	1538	New York	Sullivan
New York	1557	New York	Orange
New York	1797	New York	Dutchess
New York	1821	New York	Dutchess
New York	1844	New York	Saint Lawrence
New York	1852	New York	Saint Lawrence
New York	1855	New York	Albany
New York	1931	New York	Albany
New York	1937	New York	Livingston
New York	477	New York	Essex
New York	483	New York	Delaware
New York	515	New York	Madison
New York	519	New York	Orange
New York	522	New York	Orange
New York	524	New York	Orange
New York	529	New York	Orange
New York	531	New York	Jefferson
New York	580	New York	Monroe
New York	689	New York	Tompkins
New York	694	New York	Franklin
New York	695	New York	Oswego
New York	721	New York	Rensselaer
New York	722	New York	Saratoga
New York	723	New York	Seneca
New York	776	New York	Ulster
New York	869	New York	Warren
New York	986	New York	Washington
New York	998	New York	Erie
Ohio	112	Ohio	Wayne
Ohio	127	Ohio	Montgomery
Ohio	140	Ohio	Lorain
Ohio	157	Ohio	Sandusky
Ohio	1805	Ohio	Huron
Ohio	186	Ohio	Lawrence
Ohio	205	Ohio	Hardin
Ohio	214	Ohio	Fairfield
Ohio	233	Ohio	Richland
Ohio	235	Ohio	Washington
Ohio	263	Ohio	Knox

Jurisdiction	Sewershed ID	Reporting Jurisdiction	County
Ohio	273	Ohio	Hamilton
Ohio	274	Ohio	Henry
Ohio	291	Ohio	Huron
Ohio	301	Ohio	Lucas
Ohio	304	Ohio	Butler
Ohio	309	Ohio	Licking
Ohio	315	Ohio	Miami
Ohio	326	Ohio	Scioto
Ohio	36	Ohio	Summit
Ohio	395	Ohio	Hamilton
Ohio	398	Ohio	Lucas
Ohio	403	Ohio	Montgomery
Ohio	411	Ohio	Wyandot
Ohio	442	Ohio	Montgomery
Ohio	54	Ohio	Greene
Ohio	79	Ohio	Stark
Ohio	859	Ohio	Mercer
Oregon	934	Oregon	Benton
Oregon	935	Oregon	Polk
Oregon	936	Oregon	Lane
Oregon	940	Oregon	Deschutes
Oregon	942	Oregon	Washington
Oregon	943	Oregon	Washington
Oregon	945	Oregon	Multnomah
Oregon	947	Oregon	Lane
Oregon	949	Oregon	Washington
Oregon	951	Oregon	Umatilla
Oregon	953	Oregon	Klamath
Oregon	955	Oregon	Yamhill
Oregon	959	Oregon	Umatilla
Oregon	961	Oregon	Marion
Oregon	965	Oregon	Marion
Oregon	967	Oregon	Marion
Oregon	969	Oregon	Umatilla
Oregon	971	Oregon	Lane
Pennsylvania	1357	Pennsylvania	Montgomery
Pennsylvania	1358	Pennsylvania	Cumberland
Pennsylvania	1359	Pennsylvania	Erie
Pennsylvania	1367	Pennsylvania	Franklin
Pennsylvania	1369	Pennsylvania	Westmoreland
Pennsylvania	1370	Pennsylvania	Lehigh
Pennsylvania	1375	Pennsylvania	York
Pennsylvania	1455	Pennsylvania	Delaware
Pennsylvania	1533	Pennsylvania	Centre
Pennsylvania	1553	Pennsylvania	Mckean
Pennsylvania	1554	Pennsylvania	Mercer
Pennsylvania	1775	Pennsylvania	Lackawanna
Pennsylvania	1775	Pennsylvania	Lackawanna
Pennsylvania	1776	Pennsylvania	Mercer

Jurisdiction	Sewershed ID	Reporting Jurisdiction	County
Pennsylvania	1809	Pennsylvania	Chester
South Carolina	1871	South Carolina	Beaufort
South Carolina	877	South Carolina	Kershaw
South Carolina	878	South Carolina	Charleston
South Carolina	883	South Carolina	York
South Carolina	884	South Carolina	Greenville
South Carolina	885	South Carolina	Georgetown
South Carolina	908	South Carolina	Richland
South Carolina	909	South Carolina	Horry
Texas	135	Houston	Harris
Texas	149	Houston	Harris
Texas	160	Houston	Harris
Texas	183	Houston	Harris
Texas	1934	Texas	Mclennan
Texas	201	Houston	Harris
Texas	207	Houston	Harris, Montgomery
Texas	250	Houston	Harris
Texas	289	Houston	Harris
Texas	290	Houston	Harris
Texas	307	Houston	Harris
Texas	35	Houston	Harris
Texas	366	Houston	Harris
Texas	367	Houston	Harris
Texas	406	Houston	Harris
Texas	40	Houston	Harris
Texas	435	Houston	Harris
Texas	439	Houston	Harris
Texas	443	Houston	Harris
Texas	449	Houston	Harris
Texas	56	Houston	Harris
Texas	97	Houston	Harris
Utah	10	Utah	Cache
Utah	11	Utah	Salt Lake
Utah	11	Utah	Salt Lake, Utah
Utah	12	Utah	Cache
Utah	15	Utah	Grand, San Juan
Utah	16	Utah	Weber, Davis
Utah	18	Utah	Utah
Utah	19	Utah	Carbon
Utah	20	Utah	Utah
Utah	21	Utah	Duchesne
Utah	22	Utah	Summit
Utah	24	Utah	Davis
Utah	26	Utah	Utah
Utah	28	Utah	Salt Lake
Utah	2	Utah	Uintah
Utah	33	Utah	Utah
Utah	5	Utah	Iron
Utah	9	Utah	Davis, Weber

Jurisdiction	Sewershed ID	Reporting Jurisdiction	County
Virginia	1237	Virginia	Tazewell
Virginia	1576	Virginia	Loudoun
Virginia	1576	Virginia	Loudoun
Virginia	177	Virginia	Chesapeake City, Norfolk City, Virginia Beach City
Virginia	178	Virginia	Isle Of Wight, Suffolk City, Chesapeake City, Portsmouth City
Virginia	181	Virginia	Williamsburg City, Newport News City, York, New Kent, James City
Virginia	1826	Virginia	Wise
Virginia	1828	Virginia	Stafford
Virginia	1829	Virginia	Amherst, Campbell, Bedford
Virginia	1831	Virginia	Rockingham, Harrisonburg City
Virginia	1833	Virginia	Montgomery, Pulaski, Radford
Virginia	1834	Virginia	Roanoke, Roanoke City, Salem, Botetourt
Virginia	1837	Virginia	Russell
Virginia	38	Virginia	Alexandria City, Fairfax
Virginia	38	Virginia	Alexandria City, Fairfax
Virginia	61	Virginia	Montgomery
Washington	1076	Washington	Chelan
Washington	1143	Washington	Pierce
Washington	1397	Washington	Pierce
Washington	1635	Washington	Yakima
Washington	755	Washington	Benton
Washington	758	Washington	Benton
Washington	760	Washington	Spokane
Wisconsin	120	Wisconsin	Columbia
Wisconsin	128	Wisconsin	Brown
Wisconsin	153	Wisconsin	Waukesha
Wisconsin	164	Wisconsin	Brown, Kewaunee
Wisconsin	172	Wisconsin	Washington, Dodge
Wisconsin	1851	Wisconsin	Walworth
Wisconsin	189	Wisconsin	Rock
Wisconsin	203	Wisconsin	Kenosha
Wisconsin	209	Wisconsin	La Crosse
Wisconsin	223	Wisconsin	Columbia
Wisconsin	243	Wisconsin	Juneau
Wisconsin	246	Wisconsin	Dunn
Wisconsin	248	Wisconsin	Lincoln
Wisconsin	256	Wisconsin	Ozaukee, Milwaukee
Wisconsin	257	Wisconsin	Waukesha, Milwaukee, Racine, Washington, Ozaukee
Wisconsin	260	Wisconsin	Green
Wisconsin	297	Wisconsin	Jefferson, Waukesha
Wisconsin	302	Wisconsin	Winnebago
Wisconsin	320	Wisconsin	Sheboygan
Wisconsin	325	Wisconsin	Columbia
Wisconsin	389	Wisconsin	Portage
Wisconsin	392	Wisconsin	Douglas
Wisconsin	41	Wisconsin	Outagamie, Winnebago, Calumet
Wisconsin	432	Wisconsin	Waupaca



Jurisdiction	Sewershed ID	Reporting Jurisdiction	County
Wisconsin	433	Wisconsin	Marathon
West Virginia	1250	West Virginia	Boone
West Virginia	1860	West Virginia	Kanawha
West Virginia	1861	West Virginia	Wayne, Cabell
West Virginia	1863	West Virginia	Cabell
West Virginia	1864	West Virginia	Cabell
West Virginia	206	West Virginia	Mineral
West Virginia	445	West Virginia	Ohio
West Virginia	466	West Virginia	Mercer
Alabama	1716	Alabama	Jefferson
Alabama	1718	Alabama	Jefferson
California	1378	California	Yolo
California	1674	California	San Benito
California	1680	California	Sonoma
California	1684	California	San Diego
California	1690	California	Los Angeles
California	1695	California	Marin
California	1703	California	Marin
California	1732	California	Alameda
California	1756	California	Monterey
California	1760	California	Yolo
California	1766	California	Yolo
California	1784	California	Marin
California	1790	California	Orange
California	1793	California	Sonoma
California	1869	California	Riverside
California	305	California	Santa Clara
California	363	California	San Francisco, San Mateo
Delaware	1930	Delaware	Sussex
Florida	1631	Florida	Orange
Florida	1699	Florida	Palm Beach
Florida	1735	Florida	Seminole
Florida	1841	Florida	Miami-Dade
Georgia	1663	Georgia	Fulton
Georgia	1697	Georgia	Fulton
Iowa	1783	Iowa	Muscatine
Iowa	1791	Iowa	Wapello
Idaho	1842	Idaho	Ada
Idaho	813	Idaho	Ada
Illinois	1721	Illinois	Du Page
Indiana	1738	Indiana	Clark
Kansas	1696	Kansas	Douglas
Kansas	1813	Kansas	Wyandotte
Maryland	1782	Maryland	Washington
Maryland	1808	Maryland	Saint Marys
Maine	1843	Maine	York
Michigan	1682	Michigan	Macomb
Michigan	1691	Michigan	Jackson
Michigan	1781	Michigan	Kent

Jurisdiction	Sewershed ID	Reporting Jurisdiction	County
Minnesota	1675	Minnesota	Blue Earth, Nicollet
North Carolina	1662	North Carolina	Forsyth
North Carolina	569	North Carolina	Lenoir
New Hampshire	1755	New Hampshire	Strafford
Ohio	1779	Ohio	Mahoning
Pennsylvania	1667	Pennsylvania	Dauphin
Pennsylvania	1737	Pennsylvania	Delaware
Texas	1949	Texas	Montgomery
Utah	1708	Utah	Utah

Data Table for Wastewater Surveillance Current Virus Levels (in %)

## Terms to Know

**Virus levels:** SARS-CoV-2 viral RNA concentrations in wastewater. RNA is the virus's genetic material.

**Normalization:** A statistical method to account for differences in variables such as wastewater flow rate and number of sites. In other words, normalization reduces excess variation (or "noise") and helps account for things like changing population density and wastewater flow. Normalized data can be compared over time and between different sites. Metrics presented on this page are normalized. See the [NWSS Data Analytics page](#) for more information.

**Sewershed:** The geographic area contributing wastewater to a sampling location. Sewersheds may cross county or state boundaries. See the map for more information.

## About the Data

†Data will update Monday through Friday as soon as they are reviewed and verified, oftentimes before 8 pm ET. Update reporting coincides with a federal holiday. Note: Daily updates (Mon-Fri) might be delayed due to delays in reporting.

### Percent of sites in each percent change category over time

- At any point in time, this chart shows what percent of sites reported decreased levels of virus in the previous 15 days, and what percent stayed the same.
- Viewed over time, the chart shows how this distribution changed.
- For each date, the number of sites in each percent change category is counted and divided by the total number of sites. This information is provided on a stacked area chart to show the change in the percent of sites in each percent change category.
- To simplify the chart, the "-9% to 0%" and "1% to 9%" categories were combined into "-9% to 9%," and the "100% to more" category was combined into "100% or more." Because the number of sampling sites has changed since January 1, 2021, the number of sites is shown as a black line on the chart.
- Not all sites have data since January 1, 2021, and not all sites have data for all dates shown on the chart.
- The percent of sites in each percent change category for each date may not add up to 100% due to rounding.

### Current virus levels in wastewater by site

- This metric shows whether SARS-CoV-2 levels at a site are currently higher or lower than past levels at the same site. The lowest SARS-CoV-2 levels in wastewater for all samples collected since December 1, 2021 from the lowest to highest level are categorized into five categories (0-19%, 20-39%, 40-59%, 60-79%, and 80-100%) based on how low or high their levels are compared to the 19% group represent the lowest levels seen at that sampling site and those in the 80-100% group represent the highest.
- Using December 1, 2021 as a starting date for all sites makes data more comparable between sites. Sites that began reporting data since December 1, 2021 or earlier but have not reported data for at least 15 days are not long enough to reflect the same surges as the other sites.
- The "New site" category means a site just started collecting wastewater samples and has reported fewer than 10 samples, so it cannot meaningfully compare levels at the site over time.

### Percent change in the last 15 days

- This metric shows how much normalized SARS-CoV-2 viral levels in wastewater at each site increased or decreased over the last 15 days. This metric does not show overall levels of SARS-CoV-2 in wastewater. Percent change compares past data to current data. A percent increase does not necessarily mean SARS-CoV-2 viral levels in wastewater are high. For instance, a change from 500,000 units to 1 million units is also a percent change of 100%.
- Percent change is calculated as the modeled change over 15 days, based on linear regression of log-transformed data. At least 2 samples over the 15-day period to calculate percent change. Sites with "No recent data" (colored gray on the map) do not have data for the current 15-day period.

### Percent of wastewater samples with detectable virus in the last 15 days

- This metric shows the percent of wastewater samples at each site that were positive for SARS-CoV-2 RNA over the last 15 days. This metric does not show overall levels of SARS-CoV-2 in wastewater.

- This metric is calculated by dividing the number of samples in which SARS-CoV-2 was detected at a site by the total during the 15-day period and multiplying by 100.
- Sites with at least one sample and no SARS-CoV-2 viral detections over the past 15 days are listed as “Non-detect” circles with a black outline.
- Sites with no samples for the current 15-day period are listed as “No recent data” and colored gray on the map.

#### SARS-CoV-2 concentrations in wastewater over time

- When a site is selected, a smoothed, spline fit SARS-CoV-2 concentration line is shown for the last 4 months, as the 2 concentration line shows how SARS-CoV-2 concentrations in wastewater at a sampling site have changed over time.
- At least 4 samples are required to produce the smoothed SARS-CoV-2 concentration line. If a major change in lab results since the new laboratory method was reported are shown. Sites labeled as ‘New sites’ in the current virus levels map are shown in caution since they have only a few samples to generate their trends lines.

#### Category change in the last 7 days

- This metric shows the change in the number of sites (represented as a percent) that are in a specific metric category (change category of 1000% or more) compared to the previous 7 days. In other words, it shows how many sites have moved to a higher metric category in the past week. It is calculated by subtracting the current number of sites in each metric category 7 days earlier and dividing by the number of sites in the same category 7 days earlier.
- \*\*If a metric category had no sites in it 7 days earlier, the category change in the last 7 days is listed as "N/A\*\*" si

#### County-level data

- Data are presented by sewershed (the geographic area contributing wastewater to a sampling location). Sampling locations are often at treatment plants or upstream in the sewage network. Sewersheds may cross county or state boundaries. This map shows data for a single county, and a single sewershed may serve multiple counties. Sewersheds are referred to as “sites” on the map.

#### Sewershed locations

- Data are plotted in the ZIP code of the sampling location, so points on the map do not correspond exactly to sewer boundaries.
- All counties represented by a sampling location are highlighted when the sampling location point is selected.
- The District of Columbia (DC) and New York City (NYC) are shown separately on the map to denote sampling locations in “District of Columbia Territory” dropdown menu, select “District of Columbia” or “New York City” to zoom to points reported within these territories. Sampling locations may receive wastewater from parts of counties in Virginia or Maryland and some NYC sampling locations may receive wastewater from parts of counties in surrounding states.

#### Data subject to change

- Wastewater disease surveillance data presented are the best available data and are subject to change. These data are for a 15-day period due to processing and reporting delays. All data are provisional.

#### May 2022 Coverage Limitations

- Beginning April 15, 2022, approximately 150 wastewater sites in 29 states began transitioning to a new wastewater surveillance system. These sites will not have recent data displayed and will be colored gray on the map. It will take several weeks for these sites to be fully operational and metrics displayed on this page. Results for these sites are expected to be available again between mid-May and June.

#### Data not shown

- Data from sewersheds that serve fewer than 3,000 people.
- Data from sewersheds where population estimates are missing.
- Data from facility or institution-specific sampling locations.
- Wastewater treatment plant names and the names of upstream sampling sites are made anonymous using a color-coded system.
- Approximately 20% of US households are on septic systems; the exact percent varies by location. These systems are not represented in the data.
- Data from sewersheds currently being monitored but not submitted by health departments to CDC. Certain communities do not submit their data to CDC.
- Data from sewersheds may not be presented if there are data quality issues.

#### Data source

- Data displayed are derived from two sources:
- Data are submitted to CDC by state, tribal, local, and territorial (STLT) health departments participating in the National Wastewater Surveillance System. Participation is voluntary, so not all jurisdictions are reporting to CDC.
- Data are reported through a CDC-managed contract for commercial testing, which is intended to supplement the wastewater surveillance programs.

#### Laboratory methods

- SARS-CoV-2 concentrations in wastewater are measured using reverse transcription quantitative polymerase chain reaction (RT-qPCR). Laboratory processing and quantification methods may vary commonly, within a sampling site over time. Since SARS-CoV-2 concentration estimates may differ across these methods, they cannot be compared across sampling locations. Instead, percent change in SARS-CoV-2 concentrations and current lab results are provided. These metrics are more comparable across lab methods. When testing a sample, SARS-CoV-2 is detected if at least two replicates for the sample were positive. Positive is defined for RT-qPCR as a Ct value less than 40 and for RT-ddPCR as a Ct value less than 35. Learn more on the Wastewater Surveillance Testing Methods page.

#### Data download

- These data can be downloaded from data.cdc.gov: [NWSS Public SARS-CoV-2 Wastewater Metric Data](#) and [NWSS Wastewater Data](#)
- The data dictionary for these data (Public Analytics Data Dictionary) is also available.
- To request detailed wastewater data, including a full-time history of raw concentrations, email [nwss@cdc.gov](mailto:nwss@cdc.gov) with request.' You will be required to sign a data use agreement.

## Wondering what all the data mean?

CDC's [COVID-Data Tracker Weekly Review](#) helps you stay up to date on interpretation of key data and trends.

## How does wastewater surveillance work?

Wastewater data can show changes in disease trends 4 to 6 days before those changes in trends are seen in clinic sample captures the infection status of thousands to millions of individuals. Learn more: [National Wastewater Sur](#)

## If it looks like virus levels in wastewater are rising in my community?

Check your county's [COVID-19 Community Level](#) and follow the recommended prevention steps. Public health officials watch for sustained increasing levels of the virus in wastewater and use these data to inform local health officials track a variety of data and put this information together to understand the local COVID-19 situation.

## How do I build NWSS in my community?

Wastewater-based disease surveillance is an exciting new tool to help communities monitor their health. Find [info](#) implementing a wastewater-based disease surveillance system.

## Is there wastewater sampling in my community?

New sampling sites are being added over time as health departments begin sampling and reporting wastewater surveillance. If you are not represented on this dashboard may be conducting wastewater surveillance. If you would like to know if wastewater surveillance is in your community, contact your [health department](#) or local government. At this time, CDC does not release the names of zip codes where sampling sites are located. However, information on the counties served by the wastewater sampling sites is available.





### Cite COVID Data Tracker

Centers for Disease Control and Prevention. COVID Data Tracker. Atlanta, GA: US Department of Health and Human Services, CDC; 2023, March 02. <https://covid.cdc.gov/covid-data-tracker>

### [COVID-19 Home >](#)

All COVID-19 topics including prevention, travel, work, and school

#### HAVE QUESTIONS?

-  Visit CDC-INFO
-  Call 800-232-4636
-  Email CDC-INFO
-  Open 24/7

#### CDC INFORMATION

[About CDC](#)  
[Jobs](#)  
[Funding](#)  
[Policies](#)  
[File Viewers & Players](#)

[Privacy](#)  
[FOIA](#)  
[No Fear Act](#)  
[OIG](#)  
[Nondiscrimination](#)  
[Accessibility](#)

**CONNECT WITH CDC**



[U.S. Department of Health & Human Services](#)

[USA.gov](#)

[CDC Website Exit Disclaimer](#) 