

COVID Data Tracker

Maps, charts, and data provided by CDC, updates Mon-Fri by 8 pm ET

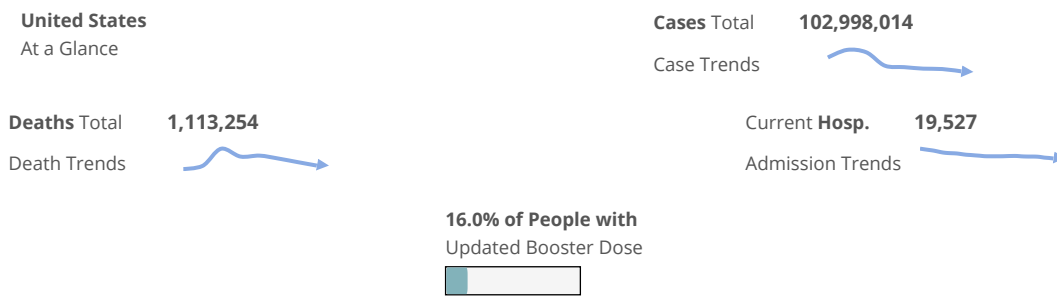
[COVID-19 Home >](#)



CDC recommends use of [COVID-19 Community Levels](#) to determine the impact of COVID-19 on communities and to take [action](#). CDC also provides [Transmission Levels](#) (also known as Community Transmission) to describe the amount of COVID-19 spread within each county. Healthcare facilities use Transmission Levels to determine [infection control](#) interventions.

United States at a Glance

Collapse



Data Tracker Home

Cases, Deaths, & Testing

Case & Death Demographic Trends

Vaccination Distribution & Coverage

Vaccine Effectiveness & Breakthrough Surveillance

Health Equity

Pediatric

Pregnancy

People at Increased Risk

Wastewater Surveillance

COVID-19: Wastewater Surveillance

Communities can track the presence of SARS-CoV-2, the virus that causes COVID-19, in wastewater samples. These data can provide an early warning of COVID-19's spread in communities. For more information, visit the [Wastewater Surveillance System page](#).

Monitoring Wastewater Surveillance Data

Wastewater surveillance for COVID-19 is a rapidly developing field. State, tribal, local, and territorial health departments participating in the National Wastewater Surveillance System (NWSS) submit testing data to CDC. CDC then standardizes and interprets these data and presents them in the COVID Data Tracker. How often sites collect wastewater samples and how frequently data are reported to CDC varies by health department.

Wastewater data are meant to be used with other COVID-19 surveillance data to better understand COVID-19's spread in a community. Learn more about wastewater data by exploring each of the charts and maps. To see a map of which SARS-CoV-2 variant is the most dominant at each wastewater sampling site, see [CDC COVID Data Tracker: Summary of Variant Surveillance](#). [View information about the data and download the data.](#)

Wastewater Surveillance

Health Care Settings

Social Impact & Prevention

Variants & Genomic Surveillance

Antibody Seroprevalence

Post-COVID Conditions

Traveler-Based Genomic Surveillance

Other COVID-19 Data

Communications Resources

COVID-19 Home

✉ Get Email Updates

Sign up to receive the COVID Data Tracker Weekly Review.

Email Address:

[What's this?](#)

[Monitoring Wastewater Surveillance Data](#)

[Wastewater Metric Chart](#)

[Wastewater Metric Map](#)

[Data Downloads](#)

[Terms to Know](#)

[About the Data](#)

Maps, charts, and data provided by CDC, updates Mon-Fri by 8pm ET[†]. This represents all wastewater data sent directly to CDC's NWSS DCIPHER platform, with the exceptions described in the [About the Data section](#) below. The map represents a site. A site can represent all or part of a "sewershed," which is the area contributing wastewater to a sampling location. Not all communities report wastewater data to CDC. Participation is voluntary, and wastewater is collected from sewer systems so communities that rely primarily on septic systems are not represented. Some sites that submit data to NWSS are not represented on the map due to various factors, such as small population or having facility-specific sampling.

[View Footnotes and Download Data](#)

Wastewater Metric Chart

This chart shows how much virus levels have changed (increased and decreased) over time at various sites across the United States. It shows the percent of sites in each category of the percent change for each date among all sites with available data.

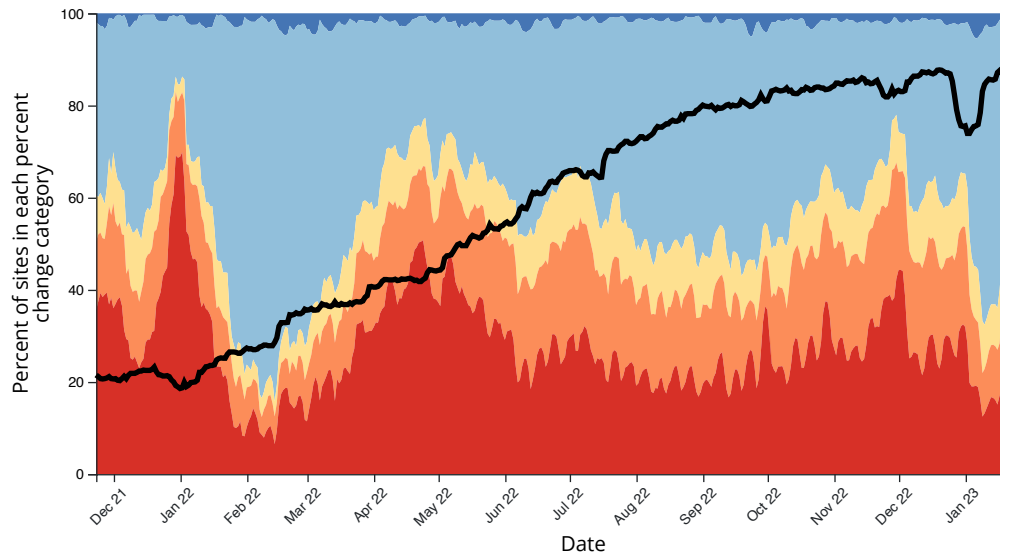
The percent change metric shows whether virus levels have increased or decreased at sites over the last 15 days.

- Blue categories (Large decrease (-100%); Decrease (-99% to -10%)): Virus levels decreased at these sites in the last 15 days.
- Yellow category (Stable (-9% to 9%)): Virus levels stayed about the same at these sites in the last 15 days.
- Orange and red categories (Increase (10% to 99%); Large increase (100% or more)): Virus levels increased at these sites in the last 15 days.

The chart shows the overall percent of sites that were in each category over time since January 2020. If more area on the chart is shaded light or dark blue, it means virus levels were decreasing at more sites at that point in time. If more area on the chart is shaded red or orange, it means virus levels were increasing at more sites at that point in time. Since the percent change in the last 15 days metric may be affected by how many wastewater plants were collecting wastewater samples, the black line shows the number of sampling sites with available data for each date.

Note: This chart **does not** show overall levels of SARS-CoV-2 in wastewater.

Percent of sites in each percent change category over time, United States*



Percent change categories Large decrease (-100%) Decrease (-99% to -10%) Stable (-9 to 9%) Incr

Large increase (100% or more)

Number of sites reporting

*The darker bar on the right side of the figure highlights the most recent 2 weeks, which may be subject to reporting delays. The actual number of sites reporting during those 2 weeks will likely increase as more historical data are added.

Download ▾

Wastewater Metric Map

State or territory:

Select State or Territory

County:

Select a state in order to enable county select

[Reset Selections](#)

Time Period: Feb 05, 2023 – Feb 19, 2023

Major Cities On

Major Cit

Metric:

- Current virus levels in wastewater by site
- Percent change in the last 15 days
- Percent of wastewater samples with detectable virus

Show:

- Sites with no recent data
- Sites that started sampling after

Current virus levels in wastewater by site

This metric shows whether SARS-CoV-2 levels at a site are currently higher or lower than past historical levels at the same site. 0% means levels are the lowest they have been at the site; 100% means levels are the highest they have been at the site. Public health officials watch for increasing levels of the virus in wastewater over time and use these data to help make public health decisions.

⚠ Note: Sites began collecting data at different times. Sites that began reporting wastewater data after December 1, 2021 are not comparable to sites that started reporting data on or before that date.

December 1, 2021. The data history for these new sites is not long enough to reflect the same as the other sites.

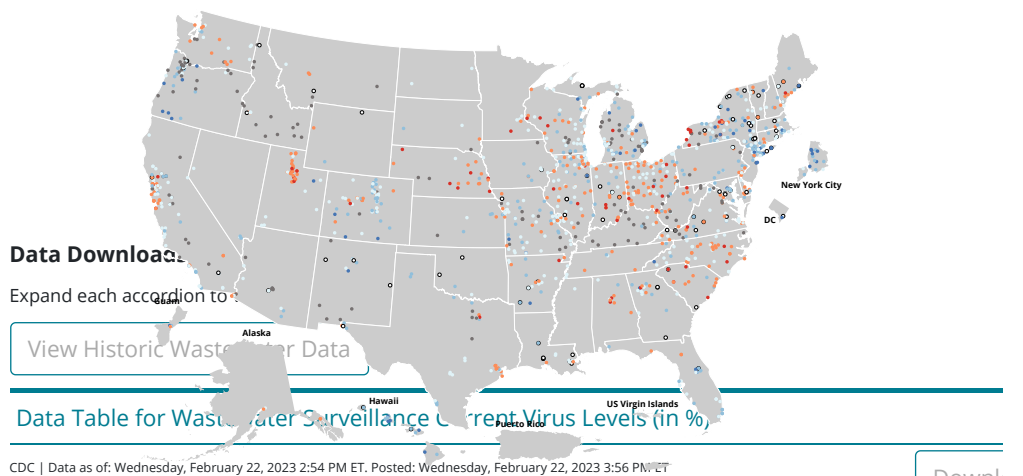
Current SARS-CoV-2 virus levels by site, United States

Current virus levels category	Num. sites	% sites	Category change in last 12 months
New Site	85	7	113%
0% to 19%	64	5	- 6%
20% to 39%	280	22	- 5%
40% to 59%	462	37	- 2%
60% to 79%	313	25	- 5%
80% to 100%	61	5	5%

Total sites with current data: 1265

Total number of wastewater sampling sites: 1430

[How is the current SARS-CoV-2 level compared to past levels calculated?](#)



Jurisdiction	Sewershed ID	Reporting Jurisdiction	County	Population Served	Category
Alaska	1174	Alaska	Anchorage	200,000	0
Alabama	1394	Alabama	Shelby	11,000	6
Alabama	1464	Alabama	Lee	72,000	7
Alabama	1778	Alabama	Marshall	9,000	2
Arkansas	1461	Arkansas	Saline	35,000	4
Arkansas	1509	Arkansas	White	25,000	4
Arkansas	1536	Arkansas	Greene	29,000	8
Arkansas	1537	Arkansas	Benton	17,737	5
Arkansas	1544	Arkansas	Garland	92,000	n
Arkansas	1544	Arkansas	Garland	92,000	4
Arkansas	1558	Arkansas	Hempstead	10,500	n
Arkansas	1565	Arkansas	Ouachita	10,200	1
Arkansas	446	Arkansas	Pulaski	32,043	5

Jurisdiction	Sewershed ID	Reporting Jurisdiction	County	Population Served	C L
Arkansas	741	Arkansas	Mississippi	5,500	4
Arizona	1271	Arizona	Pima	23,000	2
Arizona	1327	Arizona	Mohave	30,000	N
Arizona	501	Arizona	La Paz	3,500	5
Arizona	808	Arizona	Mohave	37,500	4
California	1219	California	Lake	5,000	5
California	1288	California	El Dorado	40,000	5
California	1320	California	Ventura	230,000	4
California	1387	California	Monterey	250,000	9
California	1443	California	Imperial	50,000	4
California	1561	California	San Luis Obispo	6,500	6
California	495	California	Santa Cruz	60,000	6
California	506	California	Los Angeles, Ventura	100,000	2
California	564	California	Alameda	60,000	5
California	570	California	Sonoma	220,000	4
California	724	California	Contra Costa	215,394	4
California	778	California	Lake	10,080	4
California	793	California	San Luis Obispo	39,000	4
California	802	California	Santa Cruz	85,000	5
California	803	California	Santa Cruz	150,000	6
Colorado	1290	Colorado	Garfield	7,300	5
Connecticut	1079	Connecticut	New Haven	228,000	4
Connecticut	1163	Connecticut	New London	22,000	n
Connecticut	1196	Connecticut	New Haven	19,500	6
Connecticut	1395	Connecticut	Fairfield	52,265	4
Connecticut	1618	Connecticut	Hartford	25,000	2
Connecticut	291	Connecticut	Fairfield	75,000	2
Connecticut	771	Connecticut	Fairfield	120,000	1
Connecticut	795	Connecticut	Windham	10,000	1
Connecticut	806	Connecticut	Fairfield	65,000	3
Florida	1392	Florida	Hillsborough	180,000	4
Florida	1408	Florida	Orange, Seminole	85,700	4
Florida	1501	Florida	Alachua	100,000	7
Florida	1502	Florida	Alachua	100,000	7
Florida	1551	Florida	Palm Beach	300,000	4
Florida	1552	Florida	Leon	200,000	6
Florida	1631	Florida	Orange	50,000	3
Florida	511	Florida	Pinellas	103,000	2
Florida	574	Florida	Pinellas	220,000	4
Florida	706	Florida	Escambia	197,000	3
Georgia	1109	Georgia	Lowndes	65,000	N
Georgia	684	Georgia	Dekalb	325,000	6
Guam	1440	Guam	Guam	66,000	2
Guam	1446	Guam	Guam	8,000	4
Guam	1448	Guam	Guam	105,000	1
Hawaii	1175	Hawaii	Maui	52,000	n
Hawaii	1175	Hawaii	Maui	52,000	2
Hawaii	710	Hawaii	Kauai	10,000	n
Hawaii	710	Hawaii	Kauai	10,000	2

Jurisdiction	Sewershed ID	Reporting Jurisdiction	County	Population Served	CL
Hawaii	790	Hawaii	Honolulu	700,000	1
Hawaii	798	Hawaii	Honolulu	48,519	2
Iowa	1303	Iowa	Woodbury	102,000	4
Iowa	1447	Iowa	Mahaska	5,201	7
Iowa	1449	Iowa	Mahaska	6,357	2
Iowa	544	Iowa	Johnson	75,849	n
Iowa	544	Iowa	Johnson	75,849	4
Illinois	546	Illinois	Kankakee	65,000	n
Illinois	682	Illinois	Cook	265,000	2
Illinois	683	Illinois	Cook	161,000	3
Indiana	1267	Indiana	Kosciusko	21,600	4
Indiana	1273	Indiana	Dubois	16,000	6
Indiana	1289	Indiana	Vigo	58,500	3
Indiana	1350	Indiana	Allen	315,000	4
Indiana	1352	Indiana	Jefferson	16,000	N
Indiana	1918	Indiana	Tippecanoe	60,000	n
Indiana	828	Indiana	Hamilton	86,000	4
Kansas	1299	Kansas	Johnson	112,076	3
Kansas	1300	Kansas	Johnson	42,235	4
Kansas	1304	Kansas	Johnson	73,829	5
Kansas	807	Kansas	Ford	27,000	N
Kansas	833	Kansas	Shawnee	50,000	2
Kentucky	1207	Kentucky	Carroll	3,000	N
Louisiana	1107	Louisiana	East Baton Rouge	262,326	5
Louisiana	1116	Louisiana	East Baton Rouge	99,712	5
Louisiana	1229	Louisiana	Rapides	60,000	n
Louisiana	1497	Louisiana	Jefferson	300,000	n
Louisiana	1615	Louisiana	Saint Tammany	15,000	4
Louisiana	1626	Louisiana	Jefferson	100,000	7
Louisiana	1633	Louisiana	Lafayette	40,000	5
Louisiana	1633	Louisiana	Lafayette	40,000	n
Louisiana	1650	Louisiana	Lafayette	27,000	4
Louisiana	1650	Louisiana	Lafayette	27,000	n
Louisiana	1651	Louisiana	Lafayette	10,000	2
Louisiana	1652	Louisiana	Lafayette	47,000	5
Louisiana	1652	Louisiana	Lafayette	47,000	n
Louisiana	1659	Louisiana	Jefferson	100,000	4
Louisiana	727	Louisiana	Orleans	998,000	5
Massachusetts	1330	Massachusetts	Worcester	3,000	6
Massachusetts	1495	Massachusetts	Worcester	42,000	4
Massachusetts	470	Massachusetts	Hampden	55,000	3
Maryland	1261	Maryland	Anne Arundel	91,000	4
Maryland	1262	Maryland	Anne Arundel	11,000	4
Maryland	1268	Maryland	Anne Arundel	150,000	n
Maryland	1284	Maryland	Anne Arundel	78,000	3
Maryland	1348	Maryland	Charles	88,500	5
Maryland	547	Maryland	Howard	270,000	1
Maryland	563	Maryland	Wicomico	37,000	3
Maryland	666	Maryland	Allegany	45,000	N

Jurisdiction	Sewershed ID	Reporting Jurisdiction	County	Population Served	CL
Maine	1206	Maine	York	21,000	N
Maine	1302	Maine	York	21,000	5
Maine	347	Maine	Knox	7,000	n
Maine	484	Maine	Franklin	2,750	n
Maine	507	Maine	Oxford	1,000	n
Maine	560	Maine	Sagadahoc	8,514	6
Maine	716	Maine	Cumberland	8,500	7
Minnesota	783	Minnesota	Ramsey, Anoka, Dakota, Hennepin, Washington	1,950,000	5
Minnesota	849	Minnesota	Hennepin, Carver, Scott	300,000	4
Montana	1176	Montana	Custer	8,800	N
North Carolina	1148	North Carolina	Surry	10,000	4
North Carolina	1220	North Carolina	Rowan	31,536	7
North Carolina	1223	North Carolina	Rowan	22,940	7
North Carolina	537	North Carolina	Stanly	20,000	5
North Carolina	538	North Carolina	Pasquotank	18,000	N
North Carolina	569	North Carolina	Greene, Lenoir	20,484	6
North Dakota	1463	North Dakota	Grand Forks	67,000	5
North Dakota	1471	North Dakota	Stark	25,679	4
New Hampshire	285	New Hampshire	Carroll	25,000	3
New Hampshire	497	New Hampshire	Merrimack	43,000	2
New Jersey	1291	New Jersey	Passaic	54,000	4
New Jersey	1453	New Jersey	Monmouth	47,000	N
New Jersey	1616	New Jersey	Monmouth	40,000	1
New Mexico	1386	New Mexico	Los Alamos	13,000	3
New Mexico	764	New Mexico	Bernalillo, Sandoval	650,000	1
New Mexico	854	New Mexico	Los Alamos	5,852	5
Nevada	1082	Nevada	Clark	984,000	3
Nevada	554	Nevada	Washoe	200,000	5
Nevada	703	Nevada	Clark	650,000	5
Nevada	777	Nevada	Clark	246,258	2
New York City	498	New York City	Bronx	684,569	2
New York City	500	New York City	New York	588,772	8
New York City	505	New York City	Queens	410,812	1
New York City	509	New York City	New York	588,772	1
New York City	541	New York City	Kings	596,326	3
New York City	549	New York City	Kings	1,068,012	3
New York City	551	New York City	Kings	758,007	1
New York City	552	New York City	Richmond	198,128	4
Oklahoma	1264	Oklahoma	Carter	25,000	4
Oklahoma	767	Oklahoma	Garfield	51,000	5
Oklahoma	831	Oklahoma	Beckham	11,500	5
Pennsylvania	1081	Pennsylvania	Montgomery	13,000	4
Pennsylvania	1083	Pennsylvania	Montgomery	10,000	2
Pennsylvania	125	Pennsylvania	Allegheny, Butler	41,000	3
Pennsylvania	1473	Pennsylvania	Westmoreland	32,000	N
Pennsylvania	1617	Pennsylvania	Lackawanna	88,000	7
Rhode Island	1134	Rhode Island	Kent	60,224	5
Rhode Island	1224	Rhode Island	Kent	33,000	4

Jurisdiction	Sewershed ID	Reporting Jurisdiction	County	Population Served	CL
Rhode Island	548	Rhode Island	Providence	120,000	4
Rhode Island	565	Rhode Island	Kent	6,000	2
Rhode Island	677	Rhode Island	Bristol	21,100	5
South Carolina	1265	South Carolina	Georgetown	12,000	3
South Carolina	1541	South Carolina	Horry	30,000	6
South Carolina	1549	South Carolina	Greenville	140,280	n
South Carolina	599	South Carolina	Greenwood	12,000	9
South Dakota	1266	South Dakota	Lincoln, Minnehaha	215,000	7
South Dakota	672	South Dakota	Pennington	80,000	3
Tennessee	1282	Tennessee	Davidson, Rutherford, Williamson	600,000	4
Tennessee	1323	Tennessee	Shelby	300,000	4
Tennessee	1445	Tennessee	Sumner	45,000	6
Tennessee	1607	Tennessee	Chester	3,710	6
Texas	1131	Texas	Kaufman	138,700	5
Texas	1141	Texas	Travis	510,000	5
Texas	1231	Texas	Dallas	500,000	3
Texas	1752	Texas	Tarrant	1,200,000	N
Texas	566	Texas	El Paso	143,000	3
Texas	667	Texas	Galveston	26,400	4
Texas	673	Texas	El Paso	436,000	3
Texas	681	Texas	El Paso	142,000	5
Texas	709	Texas	El Paso	170,000	6
Texas	865	Texas	Webb	120,000	2
Texas	867	Texas	Webb	140,000	3
Virginia	1113	Virginia	Arlington	207,627	n
Virginia	1160	Virginia	Hanover	20,000	4
Virginia	1195	Virginia	Norfolk City	78,322	6
Virginia	1197	Virginia	York	118,497	4
Virginia	1198	Virginia	Wise	9,340	5
Virginia	1211	Virginia	York, Gloucester, Mathews	99,112	5
Virginia	1218	Virginia	Petersburg City	30,000	3
Virginia	1272	Virginia	Franklin	5,000	4
Virginia	892	Virginia	Colonial Heights City, Petersburg City, Prince George, Chesterfield, Dinwiddie	65,000	5
Vermont	1157	Vermont	Bennington	15,000	n
Vermont	1157	Vermont	Bennington	15,000	7
Vermont	1751	Vermont	Chittenden	22,000	4
Vermont	1753	Vermont	Windsor	4,500	4
Washington	1139	Washington	King, Pierce	896,000	4
Washington	1142	Washington	King, Snohomish	789,000	3
Washington	499	Washington	Clark	162,100	2
Washington	555	Washington	Snohomish	20,000	4
Washington	661	Washington	Snohomish	37,650	4
Washington	676	Washington	Snohomish, King	288,000	3
Washington	679	Washington	Snohomish	7,125	6
Washington	768	Washington	Snohomish	173,800	6
Washington	804	Washington	Clark	16,950	N
Wisconsin	1277	Wisconsin	Dane	360,000	3

Jurisdiction	Sewershed ID	Reporting Jurisdiction	County	Population Served	C L
Wisconsin	1349	Wisconsin	Rock	36,000	N
West Virginia	789	West Virginia	Raleigh	88,900	N
Wyoming	1353	Wyoming	Sheridan	20,000	4
Wyoming	188	Wyoming	Teton	13,036	6
Arizona	1054	Arizona	Yuma	10,873	7
Arizona	1055	Arizona	Yuma	19,000	7
Arizona	1055	Arizona	Yuma	4,725	6
Arizona	1212	Arizona	Maricopa	142,520	N
Arizona	1212	Arizona	Maricopa	64,521	N
Arizona	1212	Arizona	Maricopa	6,500	N
California	1188	California	Ventura	220,000	N
California	1361	California	Stanislaus	86,000	N
California	1365	California	Yolo	3,272	N
California	1371	California	Merced	42,000	N
California	1372	California	Merced	91,000	N
California	1513	California	Kern	279,023	N
California	215	California	Los Angeles, Ventura	4,000,000	5
California	299	California	Orange	1,800,000	5
California	352	California	Santa Clara	110,338	4
California	356	California	San Bernardino	325,000	6
California	357	California	San Diego	2,200,000	4
California	363	California	San Mateo, San Francisco	750,000	3
California	363	California	San Mateo, San Francisco	750,000	N
California	383	California	Sacramento	1,480,000	5
California	393	California	San Mateo	199,000	6
California	77	California	Imperial	40,000	4
California	88	California	Contra Costa	487,300	N
Colorado	1156	Colorado	Pitkin	5,714	6
Colorado	142	Colorado	Larimer	5,818	2
Colorado	1451	Colorado	Chaffee	19,286	N
Colorado	150	Colorado	Larimer	17,997	3
Colorado	1515	Colorado	El Paso	4,779	5
Colorado	1525	Colorado	Weld	13,779	N
Colorado	1588	Colorado	Douglas	14,286	4
Colorado	1592	Colorado	Montrose	30,857	0
Colorado	161	Colorado	Garfield	16,714	4
Colorado	1748	Colorado	Delta	6,857	3
Colorado	1818	Colorado	Boulder	31,429	7
Colorado	226	Colorado	Boulder	17,600	3
Colorado	227	Colorado	Larimer	66,428	3
Colorado	252	Colorado	Denver	709,904	3
Colorado	329	Colorado	Pueblo	96,514	3
Colorado	396	Colorado	San Miguel	15,000	6
Colorado	437	Colorado	Larimer	9,292	3
Colorado	47	Colorado	Pitkin	5,500	5
Colorado	556	Colorado	Morgan	12,000	7
Colorado	576	Colorado	Routt	43,741	5
Colorado	657	Colorado	Summit	28,571	7
Colorado	733	Colorado	Douglas	34,786	5

Jurisdiction	Sewershed ID	Reporting Jurisdiction	County	Population Served	CL
Colorado	737	Colorado	Alamosa	18,364	4
Colorado	749	Colorado	Eagle	21,071	7
Colorado	751	Colorado	Mesa	89,286	5
Colorado	846	Colorado	Gunnison	30,000	3
Colorado	928	Colorado	Weld	20,000	5
Delaware	1184	Delaware	Kent	130,000	7
Delaware	1186	Delaware	Sussex	4,050	7
Delaware	1191	Delaware	Sussex	75,000	3
Florida	1144	Florida	Orange, Seminole	51,000	5
Florida	1145	Florida	Seminole	43,010	N
Georgia	1072	Georgia	Gwinnett	650,000	6
Georgia	1074	Georgia	Paulding	8,000	4
Georgia	1169	Georgia	Clarke	56,500	n
Georgia	1724	Georgia	Forsyth	36,500	3
Idaho	1023	Idaho	Latah	24,000	N
Idaho	1066	Idaho	Bonneville	60,000	N
Idaho	1129	Idaho	Kootenai	38,500	N
Idaho	1227	Idaho	Bannock	75,000	N
Idaho	1347	Idaho	Minidoka	6,200	N
Idaho	1603	Idaho	Ada	117,635	6
Idaho	1915	Idaho	Nez Perce	35,000	N
Idaho	1916	Idaho	Canyon	100,200	N
Idaho	992	Idaho	Ada	167,500	6
Illinois	1062	Illinois	Kendall	320,000	5
Illinois	1100	Illinois	Du Page	40,438	4
Illinois	1247	Illinois	Lake	80,000	1
Illinois	1252	Illinois	Du Page	59,805	5
Illinois	1316	Illinois	Will	50,244	5
Illinois	1326	Illinois	Saint Clair	85,593	4
Illinois	1586	Illinois	Mchenry	15,360	3
Illinois	1609	Illinois	Du Page	45,000	3
Illinois	1817	Illinois	Iroquois	6,150	3
Illinois	1848	Illinois	Du Page	86,000	2
Illinois	1849	Illinois	Mchenry	10,240	4
Illinois	1944	Illinois	Sangamon	50,000	n
Illinois	462	Illinois	Winnebago	353,599	5
Illinois	602	Illinois	Union	4,442	N
Illinois	604	Illinois	Cass	5,446	5
Illinois	616	Illinois	Christian	12,663	3
Illinois	617	Illinois	Mchenry	78,261	4
Illinois	622	Illinois	Effingham	12,384	5
Illinois	623	Illinois	Clay	5,100	6
Illinois	624	Illinois	Stephenson	27,218	7
Illinois	626	Illinois	Knox	39,153	5
Illinois	627	Illinois	Morgan	23,818	6
Illinois	628	Illinois	Kankakee	56,317	4
Illinois	635	Chicago	Cook	23,475	7
Illinois	635	Illinois	Cook	1,134,897	7
Illinois	636	Illinois	Cook	110,394	6

Jurisdiction	Sewershed ID	Reporting Jurisdiction	County	Population Served	CL
Illinois	637	Illinois	Cook	13,098	8
Illinois	639	Illinois	Cook	1,127,736	6
Illinois	641	Illinois	Cook	217,106	6
Illinois	643	Illinois	Lake	55,735	4
Illinois	644	Illinois	Lake	105,208	5
Illinois	645	Illinois	Lake	126,629	5
Illinois	649	Illinois	Bureau	7,555	2
Illinois	650	Illinois	Adams	50,695	6
Illinois	651	Illinois	Carroll	5,615	2
Illinois	652	Illinois	Shelby	5,329	8
Illinois	653	Illinois	Macoupin	4,480	4
Illinois	654	Illinois	Whiteside	18,678	2
Illinois	674	Chicago	Cook	23,324	4
Illinois	674	Chicago	Cook	54,362	5
Illinois	675	Chicago	Cook	77,799	8
Illinois	731	Illinois	Bureau	5,400	4
Illinois	857	Illinois	Lawrence	4,399	3
Illinois	983	Illinois	Mchenry	15,000	7
Illinois	984	Illinois	Du Page	18,800	7
Indiana	1456	Indiana	Clark	21,000	6
Indiana	1459	Indiana	Jasper	5,800	4
Indiana	1479	Indiana	Elkhart	35,000	6
Indiana	1481	Indiana	Marion	14,000	7
Indiana	1619	Indiana	Marion	800,000	6
Kentucky	1253	Kentucky	Boyd	32,575	7
Kentucky	1257	Kentucky	Magoffin	3,508	4
Kentucky	1579	Kentucky	Franklin	36,137	N
Kentucky	1581	Kentucky	Jessamine	31,038	N
Kentucky	1771	Kentucky	Russell	6,483	N
Kentucky	1772	Kentucky	Mccreary	6,255	N
Kentucky	1773	Kentucky	Powell	4,603	N
Michigan	1036	Michigan	Allegan	5,500	2
Michigan	1040	Michigan	Ottawa	3,511	5
Michigan	1049	Michigan	Allegan	3,777	5
Michigan	1050	Michigan	Saint Joseph	10,681	5
Michigan	1089	Michigan	Chippewa	6,546	5
Michigan	1090	Michigan	Manistee	8,154	N
Michigan	1090	Michigan	Manistee	8,154	N
Michigan	1090	Michigan	Manistee	8,154	N
Michigan	1093	Michigan	Mackinac	3,460	5
Michigan	1104	Michigan	Mackinac	14,000	N
Michigan	1105	Michigan	Menominee	3,842	6
Michigan	1106	Michigan	Iosco	5,000	2
Michigan	1125	Michigan	Marquette	3,500	n
Michigan	1125	Michigan	Marquette	25,000	4
Michigan	1166	Michigan	Huron	4,000	1
Michigan	1214	Michigan	Kent	40,000	N
Michigan	1215	Michigan	Kent	41,000	N
Michigan	1216	Michigan	Midland	40,000	3

Jurisdiction	Sewershed ID	Reporting Jurisdiction	County	Population Served	CL
Michigan	1217	Michigan	Kent	145,000	N
Michigan	1239	Michigan	Isabella	7,615	N
Michigan	1585	Michigan	Kent	7,000	N
Michigan	1597	Michigan	Mecosta	21,000	8
Michigan	1627	Michigan	Gogebic	6,500	5
Michigan	1729	Michigan	Macomb	99,970	N
Michigan	1729	Michigan	Macomb	37,570	N
Michigan	1729	Michigan	Macomb	56,026	1
Michigan	1730	Michigan	Macomb	5,800	2
Michigan	1731	Michigan	Macomb	3,900	5
Michigan	1942	Michigan	Macomb	12,400	2
Michigan	761	Michigan	Lenawee	8,680	3
Michigan	762	Michigan	Washtenaw	330,000	2
Michigan	799	Michigan	Washtenaw	150,000	3
Michigan	822	Michigan	Delta	12,600	2
Michigan	861	Michigan	Saginaw	40,000	4
Michigan	888	Michigan	Calhoun	70,000	2
Michigan	889	Michigan	Ottawa	11,057	3
Michigan	890	Michigan	Ottawa	11,955	3
Michigan	891	Michigan	Kalamazoo	9,709	3
Michigan	891	Michigan	Kalamazoo	6,703	5
Michigan	891	Michigan	Kalamazoo	3,416	3
Michigan	891	Michigan	Kalamazoo	45,976	4
Michigan	891	Michigan	Kalamazoo	11,246	4
Michigan	891	Michigan	Kalamazoo	31,189	4
Michigan	891	Michigan	Kalamazoo	194,170	4
Michigan	897	Michigan	Oakland, Macomb	1,482,000	N
Missouri	114	Missouri	Henry	9,118	2
Missouri	119	Missouri	Boone	123,180	5
Missouri	130	Missouri	Stoddard	6,000	N
Missouri	132	Missouri	Saint Charles	58,777	5
Missouri	133	Missouri	Saint Charles	47,758	3
Missouri	156	Missouri	Madison	4,000	N
Missouri	191	Missouri	Newton	15,906	5
Missouri	197	Missouri	Clay, Platte	13,940	3
Missouri	199	Missouri	Platte, Clay	12,855	5
Missouri	213	Missouri	Barton	4,532	1
Missouri	238	Missouri	Saline	10,113	N
Missouri	240	Missouri	Webster	8,000	4
Missouri	242	Missouri	Nodaway	12,000	7
Missouri	253	Missouri	Audrain	11,500	3
Missouri	259	Missouri	Barry, Lawrence	9,100	5
Missouri	264	Missouri	Saint Louis, Saint Louis City	306,647	6
Missouri	267	Missouri	Saint Louis	115,895	6
Missouri	268	Missouri	Saint Louis	451,367	5
Missouri	269	Missouri	Jefferson, Saint Louis	66,738	5
Missouri	270	Missouri	Saint Louis, Saint Charles	174,537	4
Missouri	279	Missouri	Newton	12,000	5
Missouri	293	Missouri	Jefferson, Saint Louis	27,391	N

Jurisdiction	Sewershed ID	Reporting Jurisdiction	County	Population Served	CL
Missouri	306	Missouri	Franklin, Saint Louis	7,001	5
Missouri	348	Missouri	Phelps	15,000	6
Missouri	355	Missouri	Andrew	4,572	n
Missouri	358	Missouri	Pettis	7,500	N
Missouri	360	Missouri	Pettis	10,730	N
Missouri	385	Missouri	Buchanan	27,000	N
Missouri	386	Missouri	Saint Charles	60,000	5
Missouri	423	Missouri	Johnson	11,883	3
Missouri	429	Missouri	Franklin	15,000	3
Missouri	64	Missouri	Saint Francois	7,165	3
Missouri	69	Missouri	Taney	6,155	9
Missouri	71	Missouri	Linn	3,979	4
Missouri	78	Missouri	Caldwell, Clinton, Dekalb	9,700	4
Missouri	81	Missouri	Cape Girardeau, Scott	33,540	5
Missouri	82	Missouri	Carroll	3,784	3
Missouri	83	Missouri	Jasper	12,000	N
Missouri	87	Missouri	Barry	3,300	5
Missouri	95	Missouri	Livingston	9,000	2
Montana	1032	Montana	Gallatin	3,000	N
Montana	1035	Montana	Gallatin	1,272	N
Montana	1310	Montana	Gallatin	50,000	n
Montana	976	Montana	Lewis And Clark	2,273	6
Montana	977	Montana	Lewis And Clark	37,125	6
North Carolina	111	North Carolina	Wilson	49,384	8
North Carolina	1521	North Carolina	Mecklenburg	82,158	6
North Carolina	1523	North Carolina	Durham	142,000	7
North Carolina	167	North Carolina	Pitt	89,616	6
North Carolina	237	North Carolina	Mcdowell	8,459	3
North Carolina	332	North Carolina	Wake	550,000	6
North Carolina	335	North Carolina	Wake	7,776	7
North Carolina	451	North Carolina	New Hanover	67,743	4
North Carolina	86	North Carolina	Wake	75,886	5
Nebraska	1493	Nebraska	Holt	3,700	5
Nebraska	916	Nebraska	Platte	23,000	9
Nebraska	917	Nebraska	Dodge	28,000	6
Nebraska	919	Nebraska	Adams	24,692	8
Nebraska	921	Nebraska	Douglas	200,000	8
Nebraska	923	Nebraska	Douglas, Sarpy	600,000	7
Nebraska	924	Nebraska	Scotts Bluff	15,932	7
Nebraska	987	Nebraska	Stanton, Madison	27,000	6
Nebraska	988	Nebraska	Lincoln	24,000	N
New Mexico	1339	New Mexico	Sandoval	101,750	5
New Mexico	1510	New Mexico	Curry	45,000	n
New York	1000	New York	Erie	17,983	7
New York	1002	New York	Erie	24,461	8
New York	1003	New York	Monroe	487,322	4
New York	1006	New York	Chautauqua	32,501	8
New York	1010	New York	Monroe	155,096	2
New York	1011	New York	Cattaraugus	17,760	N

Jurisdiction	Sewershed ID	Reporting Jurisdiction	County	Population Served	C L
New York	1012	New York	Erie	83,961	N
New York	1021	New York	Nassau	20,616	2
New York	1030	New York	Broome	38,726	4
New York	1041	New York	Suffolk	278,775	1
New York	1043	New York	Suffolk	3,349	3
New York	1078	New York	Wayne	8,931	4
New York	1097	New York	Dutchess	38,207	1
New York	1098	New York	Sullivan	4,925	2
New York	1149	New York	Tioga	3,750	5
New York	1151	New York	Oneida	27,849	2
New York	1153	New York	Livingston	15,688	5
New York	1170	New York	Greene	4,896	1
New York	1213	New York	Ontario	17,936	4
New York	1242	New York	Schoharie	5,326	N
New York	1306	New York	Nassau	524,955	2
New York	1336	New York	Chemung	18,085	1
New York	1400	New York	Broome	52,501	4
New York	1400	New York	Broome	24,672	3
New York	1401	New York	Rockland	36,527	4
New York	1402	New York	Clinton	20,893	3
New York	1403	New York	Rockland	12,676	N
New York	1483	New York	Westchester	26,651	4
New York	1485	New York	Westchester	78,683	3
New York	1487	New York	Westchester	44,876	3
New York	1489	New York	Westchester	523,765	3
New York	1800	New York	Dutchess	13,856	n
New York	1917	New York	Saint Lawrence	4,705	n
New York	1936	New York	Clinton	5,532	n
New York	1938	New York	Suffolk	6,280	n
New York	1939	New York	Suffolk	28,183	n
New York	426	New York	Orange	6,729	5
New York	430	New York	Jefferson	26,270	n
New York	479	New York	Chenango	6,734	3
New York	512	New York	Cayuga	31,814	6
New York	514	New York	Onondaga	16,168	8
New York	516	New York	Madison	4,908	6
New York	517	New York	Livingston	4,730	6
New York	518	New York	Steuben	5,162	2
New York	520	New York	Onondaga	39,352	8
New York	521	New York	Onondaga	242,377	1
New York	525	New York	Onondaga	50,727	6
New York	527	New York	Madison	9,207	7
New York	528	New York	Otsego	19,383	2
New York	52	New York	Steuben	5,941	2
New York	530	New York	Madison	3,317	4
New York	567	New York	Fulton	23,379	3
New York	690	New York	Cortland	26,950	4
New York	691	New York	Herkimer	13,924	3
New York	692	New York	Saint Lawrence	10,794	4

Jurisdiction	Sewershed ID	Reporting Jurisdiction	County	Population Served	CL
New York	693	New York	Ulster	10,577	3
New York	717	New York	Montgomery	19,679	1
New York	718	New York	Schuyler, Putnam	3,656	N
New York	719	New York	Nassau	24,041	3
New York	720	New York	Lewis	3,953	0
New York	738	New York	Putnam	4,480	4
New York	739	New York	Orange	42,921	3
New York	740	New York	Oneida	33,358	n
New York	742	New York	Albany	80,922	2
New York	836	New York	Nassau	611,349	4
New York	837	New York	Rockland	53,437	1
New York	838	New York	Rockland	207,430	4
New York	974	New York	Yates	5,339	4
New York	999	New York	Chautauqua	12,616	8
Ohio	101	Ohio	Preble	8,400	7
Ohio	102	Ohio	Marion	36,000	5
Ohio	108	Ohio	Erie	55,000	5
Ohio	121	Ohio	Ashtabula	12,000	4
Ohio	124	Ohio	Coshocton	12,000	7
Ohio	129	Ohio	Defiance	23,027	6
Ohio	131	Ohio	Tuscarawas	13,572	9
Ohio	134	Ohio	Montgomery	78,509	6
Ohio	141	Ohio	Belmont	13,169	7
Ohio	147	Ohio	Hancock	42,000	7
Ohio	1608	Ohio	Hocking	8,500	4
Ohio	168	Ohio	Darke	13,000	6
Ohio	170	Ohio	Butler	65,000	7
Ohio	187	Ohio	Franklin	645,940	6
Ohio	204	Ohio	Portage	29,000	8
Ohio	219	Ohio	Allen	61,000	4
Ohio	221	Ohio	Hamilton	200,666	7
Ohio	222	Ohio	Medina	35,000	3
Ohio	225	Ohio	Lorain	72,000	4
Ohio	228	Ohio	Lucas	195,577	4
Ohio	241	Ohio	Union	24,677	7
Ohio	255	Ohio	Hamilton	566,136	7
Ohio	276	Ohio	Cuyahoga	313,158	5
Ohio	277	Ohio	Cuyahoga	524,154	5
Ohio	278	Ohio	Cuyahoga	103,379	6
Ohio	282	Ohio	Licking	45,000	3
Ohio	311	Ohio	Wood	21,000	7
Ohio	322	Ohio	Ottawa	7,000	7
Ohio	374	Ohio	Franklin	654,817	5
Ohio	382	Ohio	Clark	88,710	7
Ohio	388	Ohio	Jefferson	17,864	7
Ohio	422	Ohio	Trumbull	68,874	2
Ohio	428	Ohio	Fayette	14,000	6
Ohio	43	Ohio	Fulton	6,000	7
Ohio	455	Ohio	Mahoning	65,469	3

Jurisdiction	Sewershed ID	Reporting Jurisdiction	County	Population Served	CL
Ohio	456	Ohio	Muskingum	47,500	6
Ohio	46	Ohio	Ashtabula	31,430	5
Ohio	48	Ohio	Athens	24,536	8
Ohio	67	Ohio	Wood	32,000	7
Ohio	73	Ohio	Williams	8,655	7
Ohio	74	Ohio	Crawford	12,362	4
Ohio	975	Ohio	Greene	4,100	6
Ohio	98	Ohio	Pickaway	13,965	7
Oregon	469	Oregon	Jackson	21,105	1
Oregon	929	Oregon	Linn	57,785	1
Oregon	930	Oregon	Clatsop	11,326	3
Oregon	931	Oregon	Baker	9,860	N
Oregon	932	Oregon	Deschutes	92,850	2
Oregon	933	Oregon	Clackamas	14,206	3
Oregon	937	Oregon	Lincoln	8,865	N
Oregon	938	Oregon	Yamhill	24,120	3
Oregon	939	Oregon	Lincoln	10,400	4
Oregon	941	Oregon	Marion	26,273	N
Oregon	944	Oregon	Washington	9,900	N
Oregon	950	Oregon	Josephine	37,725	3
Oregon	952	Oregon	Hood River	7,800	0
Oregon	956	Oregon	Jackson	133,708	1
Oregon	957	Oregon	Coos	9,975	N
Oregon	958	Oregon	Malheur	10,966	N
Oregon	966	Oregon	Columbia	13,739	N
Oregon	970	Oregon	Jefferson	3,200	N
Pennsylvania	1366	Pennsylvania	Dauphin	124,000	5
Pennsylvania	1390	Pennsylvania	Monroe	25,000	N
Pennsylvania	1529	Pennsylvania	Indiana	28,809	7
South Carolina	906	South Carolina	Lexington	40,000	7
Texas	113	Houston	Harris	3,825	7
Texas	165	Houston	Harris, Fort Bend	28,742	5
Texas	176	Houston	Harris	9,375	5
Texas	1933	Texas	Denton	180,097	N
Texas	272	Houston	Harris	4,010	7
Texas	287	Houston	Harris	12,892	4
Texas	288	Houston	Harris	33,102	5
Texas	350	Houston	Harris	20,608	3
Texas	373	Houston	Harris	32,485	5
Texas	375	Houston	Harris	293,227	6
Texas	409	Houston	Harris	97,918	5
Texas	434	Houston	Harris, Fort Bend	20,920	5
Texas	446	Houston	Harris	20,758	6
Utah	1077	Utah	Wasatch	19,936	7
Utah	17	Utah	Utah	112,901	8
Utah	1	Utah	Washington	24,970	4
Utah	23	Utah	Summit	7,460	7
Utah	25	Utah	Davis	21,872	8
Utah	27	Utah	Washington	92,047	5

Jurisdiction	Sewershed ID	Reporting Jurisdiction	County	Population Served	CL
Utah	29	Utah	Utah	12,510	6
Utah	30	Utah	Salt Lake	254,971	7
Utah	31	Utah	Utah	35,840	7
Utah	32	Utah	Tooele	36,244	7
Utah	34	Utah	Box Elder	12,451	6
Utah	3	Utah	Box Elder	21,443	5
Utah	6	Utah	Davis	64,533	7
Utah	7	Utah	Salt Lake	515,494	8
Virginia	1233	Virginia	Galax City	6,517	N
Virginia	1236	Virginia	Tazewell	12,000	n
Virginia	1237	Virginia	Tazewell	4,600	n
Virginia	1240	Virginia	Wythe	8,000	N
Virginia	180	Virginia	Chesapeake City, Virginia Beach City, Norfolk City, Portsmouth City	192,347	6
Virginia	1827	Virginia	Prince William, Fairfax, Stafford	165,901	7
Virginia	1828	Virginia	Stafford	44,000	7
Virginia	1829	Virginia	Bedford, Campbell, Amherst	220,000	n
Virginia	1830	Virginia	Albemarle	118,266	5
Virginia	1832	Virginia	Frederick	16,563	4
Virginia	1838	Virginia	Manassas City, Fairfax City, Fauquier, Fairfax, Prince William, Loudoun, Manassas Park City	350,000	7
Virginia	1859	Virginia	Henrico	330,000	7
Virginia	1859	Virginia	Henrico	330,000	n
Virginia	342	Virginia	Goochland, Henrico, Richmond City	225,000	7
Virginia	42	Virginia	Prince William, Stafford	92,000	4
Virginia	42	Virginia	Prince William, Stafford	92,000	N
Virginia	454	Virginia	Washington	7,300	6
Washington	1398	Washington	Grant	8,475	4
Washington	1399	Washington	Jefferson	10,000	6
Washington	1512	Washington	Whitman	35,812	5
Washington	1757	Washington	Thurston	119,790	7
Washington	753	Washington	Franklin	73,000	7
Washington	759	Washington	Spokane	225,000	5
Wisconsin	115	Wisconsin	Waupaca	14,000	5
Wisconsin	136	Wisconsin	Chippewa, Eau Claire	73,000	9
Wisconsin	182	Wisconsin	Saint Croix	14,000	6
Wisconsin	231	Wisconsin	Dane	345,000	4
Wisconsin	232	Wisconsin	Manitowoc	34,500	5
Wisconsin	236	Wisconsin	Marinette	11,000	5
Wisconsin	239	Wisconsin	Marathon, Wood	19,300	6
Wisconsin	313	Wisconsin	Marinette	3,500	3
Wisconsin	318	Wisconsin	Grant	11,000	7
Wisconsin	331	Wisconsin	Racine	139,000	3
Wisconsin	344	Wisconsin	Saint Croix, Pierce	15,900	8
Wisconsin	364	Wisconsin	Sheboygan	75,000	6
Wisconsin	391	Wisconsin	Dane	33,000	N
Wisconsin	420	Wisconsin	Vernon	4,400	4
Wisconsin	44	Wisconsin	Ashland	8,200	4
Wisconsin	60	Wisconsin	Jackson	5,000	8

Jurisdiction	Sewershed ID	Reporting Jurisdiction	County	Population Served	CL
Wisconsin	696	Wisconsin	Jefferson, Dodge	23,660	4
West Virginia	1248	West Virginia	Randolph	13,156	2
West Virginia	1439	West Virginia	Mason	5,515	N
West Virginia	1862	West Virginia	Putnam	28,759	7
West Virginia	1865	West Virginia	Cabell	11,250	7
West Virginia	387	West Virginia	Monongalia	48,328	8
West Virginia	459	West Virginia	Kanawha	50,000	6
West Virginia	460	West Virginia	Jefferson	17,000	N
West Virginia	463	West Virginia	Marshall	12,000	5
West Virginia	465	West Virginia	Wood	48,050	N
West Virginia	687	West Virginia	Harrison	26,498	7
West Virginia	735	West Virginia	Taylor	6,071	7
West Virginia	91	West Virginia	Kanawha	49,500	4
Alabama	1664	Alabama	Jefferson	95,000	8
Alabama	1688	Alabama	Jefferson	77,000	8
Alabama	1719	Alabama	Jefferson	200,000	4
California	1371	California	Merced	42,000	5
California	1665	California	San Mateo	40,000	5
California	1668	California	Contra Costa	484,800	6
California	1669	California	Marin	104,250	7
California	1670	California	Marin	25,000	6
California	1676	California	San Luis Obispo	31,037	5
California	1677	California	San Mateo	150,000	6
California	1678	California	Santa Cruz	160,000	6
California	1679	California	Santa Cruz	160,000	7
California	1685	California	Alameda	740,000	7
California	1687	California	Sonoma	65,000	5
California	1693	California	Los Angeles	3,500,000	6
California	1694	California	Los Angeles	200,000	4
California	1698	California	Santa Barbara	69,290	5
California	1709	California	San Bernardino	890,000	6
California	1711	California	Marin	18,000	4
California	1712	California	San Mateo	28,000	7
California	1713	California	Napa	83,300	8
California	1717	California	Solano	121,000	7
California	1720	California	Contra Costa	100,000	5
California	1733	California	Alameda	47,229	2
California	1734	California	Alameda	68,150	3
California	1764	California	Stanislaus	86,000	4
California	1785	California	San Diego	1,600,000	3
California	1789	California	Orange	48,000	4
California	1792	California	Orange	129,000	3
California	834	California	Riverside	91,765	5
Colorado	1704	Colorado	Douglas	35,000	5
Colorado	1705	Colorado	Douglas	25,000	3
Florida	1686	Florida	Orange	195,299	3
Florida	1702	Florida	Orange	66,690	3
Florida	1715	Florida	Orange	183,009	4
Florida	1840	Florida	Miami-Dade	776,150	2

Jurisdiction	Sewershed ID	Reporting Jurisdiction	County	Population Served	CL
Florida	1868	Florida	Miami-Dade	829,725	3
Georgia	1666	Georgia	Fulton	73,821	5
Georgia	1692	Georgia	Fulton	84,486	4
Georgia	1714	Georgia	Chattahoochee, Muscogee	278,000	5
Georgia	1740	Georgia	Fulton	94,000	5
Georgia	1741	Georgia	Fulton	94,000	3
Georgia	1742	Georgia	Fulton	94,000	4
Iowa	1839	Iowa	Clinton	29,300	5
Iowa	1866	Iowa	Marshall	27,400	3
Iowa	1867	Iowa	Johnson	23,000	4
Idaho	1672	Idaho	Kootenai	50,540	5
Illinois	1689	Illinois	Du Page	86,000	4
Indiana	1681	Indiana	St Joseph	130,000	6
Indiana	1739	Indiana	Clark	25,000	6
Indiana	772	Indiana	Monroe	56,090	6
Kansas	1710	Kansas	Saline	47,000	5
Kansas	1811	Kansas	Wyandotte	35,000	2
Kansas	1812	Kansas	Wyandotte	90,000	3
Kentucky	1701	Kentucky	Jefferson	423,913	9
Massachusetts	1780	Massachusetts	Worcester, Norfolk, Suffolk, Plymouth, Middlesex	2,400,000	2
Maine	1707	Maine	Cumberland	65,000	7
Maine	1754	Maine	Cumberland	10,000	9
Michigan	1671	Michigan	Washtenaw	125,000	1
Michigan	1870	Michigan	Grand Traverse	30,623	4
Minnesota	494	Minnesota	Olmsted	120,000	5
New Hampshire	1706	New Hampshire	Merrimack	4,000	3
New Hampshire	497	New Hampshire	Merrimack	45,000	6
New Jersey	1763	New Jersey	Monmouth	52,672	1
New Jersey	788	New Jersey	Essex, Bergen, Hudson, Union, Passaic	1,500,000	6
Ohio	1810	Ohio	Portage, Summit	365,000	4
Texas	1673	Texas	Dallas	200,000	7
Texas	1683	Texas	Dallas	186,000	8
Texas	1761	Texas	Potter, Randall	60,000	3
Texas	1762	Texas	Potter, Randall	140,000	2
Texas	1765	Texas	Wichita	90,000	3
Texas	1807	Texas	Cooke	17,300	2
Texas	865	Texas	Webb	120,000	3
Texas	867	Texas	Webb	140,000	3
Utah	1736	Utah	Salt Lake	600,000	6
Virginia	1786	Virginia	Carroll	3,000	3
Alaska	1490	Alaska	Juneau	10,000	7
Alaska	1491	Alaska	Juneau	20,000	7
Alabama	1333	Alabama	Colbert	19,000	5
Arkansas	1442	Arkansas	Lonoke	27,000	5
Arkansas	1444	Arkansas	Pulaski	5,000	n
Arkansas	1444	Arkansas	Pulaski	5,000	3
Arkansas	1462	Arkansas	Washington	93,949	4

Jurisdiction	Sewershed ID	Reporting Jurisdiction	County	Population Served	CL
Arkansas	1465	Arkansas	Washington	93,949	6
Arkansas	1472	Arkansas	Saint Francis	13,000	5
Arkansas	1540	Arkansas	Boone	14,000	3
Arkansas	1542	Arkansas	Pulaski	30,377	4
Arkansas	1543	Arkansas	Pulaski	23,812	5
Arkansas	1545	Arkansas	Pulaski	28,500	6
Arkansas	1546	Arkansas	Pulaski	18,463	6
Arkansas	1548	Arkansas	Jefferson	42,323	2
Arkansas	1550	Arkansas	Pope	31,000	3
Arkansas	1558	Arkansas	Hempstead	10,500	3
Arizona	1334	Arizona	Maricopa	150,000	n
Arizona	1334	Arizona	Maricopa	150,000	4
Arizona	1382	Arizona	Maricopa	50,000	4
Arizona	1383	Arizona	Maricopa	2,400,000	5
Arizona	590	Arizona	Pima	347,900	3
Arizona	715	Arizona	Pima	397,407	5
California	1173	California	Contra Costa	494,300	4
California	1199	California	Kings	59,000	2
California	1230	California	San Luis Obispo	47,400	4
California	1409	California	San Bernardino	78,000	N
California	1560	California	San Luis Obispo	14,276	4
California	1593	California	San Luis Obispo	6,500	4
California	1759	California	San Luis Obispo	15,200	3
California	1822	California	Marin	13,000	8
California	461	California	Humboldt	43,173	4
California	570	California	Sonoma	220,000	n
California	763	California	Santa Cruz	160,000	6
California	779	California	Los Angeles	200,000	2
California	834	California	Riverside	91,765	3
Connecticut	1163	Connecticut	New London	22,000	4
Connecticut	534	Connecticut	Fairfield	100,000	2
Connecticut	686	Connecticut	New Haven	112,000	6
Connecticut	795	Connecticut	Windham	10,000	n
Connecticut	832	Connecticut	New London	40,000	5
District of Columbia	486	District of Columbia	District Of Columbia	1,600,000	n
District of Columbia	486	District of Columbia	District Of Columbia	1,600,000	1
Florida	1408	Florida	Orange, Seminole	85,700	n
Florida	1410	Florida	Palm Beach, Martin	96,136	4
Florida	1606	Florida	Lee	76,800	3
Florida	1613	Florida	Sarasota	100,000	4
Florida	668	Florida	Miami-Dade	920,528	3
Florida	669	Florida	Orange	277,823	2
Florida	670	Florida	Orange	59,587	1
Florida	671	Florida	Orange	463,672	1
Florida	711	Florida	Miami-Dade	829,725	3
Florida	781	Florida	Miami-Dade	776,150	3
Georgia	476	Georgia	Richmond	197,191	4

Jurisdiction	Sewershed ID	Reporting Jurisdiction	County	Population Served	C L
Guam	1441	Guam	Guam	9,000	5
Guam	1450	Guam	Guam	7,000	6
Hawaii	1181	Hawaii	Maui	59,000	1
Hawaii	1203	Hawaii	Honolulu	300,000	1
Hawaii	1204	Hawaii	Honolulu	109,236	1
Hawaii	1205	Hawaii	Maui	49,000	2
Hawaii	1208	Hawaii	Honolulu	20,800	2
Hawaii	1221	Hawaii	Hawaii	32,600	3
Hawaii	1337	Hawaii	Hawaii	5,000	1
Iowa	105	Iowa	Johnson	21,000	4
Iowa	1496	Iowa	Winneshiek	8,500	N
Illinois	462	Illinois	Winnebago	240,000	2
Illinois	546	Illinois	Kankakee	65,000	1
Indiana	1162	Indiana	Hamilton	98,000	n
Indiana	1162	Indiana	Hamilton	98,000	4
Indiana	1269	Indiana	Lake	28,000	5
Indiana	1273	Indiana	Dubois	16,000	n
Indiana	1281	Indiana	Delaware	67,000	4
Indiana	1293	Indiana	St Joseph	130,000	4
Indiana	1314	Indiana	Wayne	36,000	6
Indiana	1318	Indiana	Huntington	17,612	2
Indiana	1319	Indiana	Howard	45,000	3
Indiana	678	Indiana	Bartholomew	49,000	N
Indiana	765	Indiana	Monroe	28,350	9
Indiana	772	Indiana	Monroe	67,500	8
Kansas	1292	Kansas	Johnson	66,377	6
Kansas	1305	Kansas	Johnson	54,985	3
Kansas	472	Kansas	Reno	40,000	3
Kansas	787	Kansas	Shawnee	90,000	3
Kentucky	810	Kentucky	Estill	5,000	2
Louisiana	1229	Louisiana	Rapides	60,000	3
Louisiana	1497	Louisiana	Jefferson	300,000	2
Louisiana	1614	Louisiana	Jefferson	65,364	5
Louisiana	1615	Louisiana	Saint Tammany	15,000	n
Louisiana	1626	Louisiana	Jefferson	100,000	n
Louisiana	1632	Louisiana	Iberia	20,000	6
Louisiana	1651	Louisiana	Lafayette	10,000	n
Louisiana	1656	Louisiana	Jefferson	100,000	4
Louisiana	792	Louisiana	Orleans	389,000	6
Massachusetts	1180	Massachusetts	Worcester	12,000	2
Massachusetts	1311	Massachusetts	Bristol	100,000	5
Massachusetts	1384	Massachusetts	Middlesex	180,000	4
Massachusetts	1495	Massachusetts	Worcester	42,000	n
Maryland	1260	Maryland	Anne Arundel	89,000	4
Maryland	1268	Maryland	Anne Arundel	150,000	4
Maryland	1278	Maryland	Anne Arundel	22,000	2
Maryland	1285	Maryland	Anne Arundel	13,000	2
Maryland	561	Maryland	Washington	90,000	5
Maine	347	Maine	Knox	7,000	9

Jurisdiction	Sewershed ID	Reporting Jurisdiction	County	Population Served	C L
Maine	475	Maine	Piscataquis	900	3
Maine	484	Maine	Franklin	2,750	7
Maine	507	Maine	Oxford	1,000	4
Maine	65	Maine	Lincoln	1,759	3
Minnesota	1108	Minnesota	Dakota, Scott	250,000	4
Minnesota	993	Minnesota	Scott, Dakota	150,000	6
Missouri	1559	Missouri	Jefferson	12,500	5
Mississippi	1393	Mississippi	Lafayette	27,662	5
Montana	562	Montana	Missoula	68,015	5
North Carolina	1179	North Carolina	Watauga	26,000	5
North Carolina	421	North Carolina	Duplin, Pender	10,000	8
North Carolina	492	North Carolina	Henderson	16,000	5
North Carolina	536	North Carolina	Swain, Jackson	12,000	9
North Carolina	539	North Carolina	Vance	15,000	5
North Carolina	575	North Carolina	Mitchell	3,500	4
Nebraska	1312	Nebraska	Keith	4,793	N
Nebraska	1411	Nebraska	Saunders	4,800	2
New Hampshire	402	New Hampshire	Sullivan	6,500	4
New Jersey	1322	New Jersey	Essex, Union	1,300,000	2
New Jersey	1385	New Jersey	Hudson	145,000	3
New Jersey	1605	New Jersey	Bergen	564,563	1
New Jersey	784	New Jersey	Somerset, Union, Middlesex	880,000	2
New Jersey	788	New Jersey	Passaic, Essex, Hudson, Bergen	1,500,000	6
New Mexico	1177	New Mexico	Santa Fe	87,505	3
New Mexico	853	New Mexico	Los Alamos	13,179	5
New Mexico	854	New Mexico	Los Alamos	5,852	n
Nevada	663	Nevada	Clark	265,000	3
New York City	485	New York City	Kings	283,428	1
New York City	487	New York City	Queens	848,328	1
New York City	503	New York City	Queens	90,474	4
New York City	545	New York City	Queens	728,123	2
New York City	550	New York City	Richmond	244,918	2
New York City	553	New York City	Kings	192,050	3
Oklahoma	767	Oklahoma	Garfield	51,000	n
Oklahoma	769	Oklahoma	Comanche	93,000	3
Oklahoma	831	Oklahoma	Beckham	11,500	n
Oregon	1164	Oregon	Clackamas, Washington	25,780	n
Oregon	1164	Oregon	Clackamas, Washington	25,780	4
Oregon	1200	Oregon	Multnomah, Washington	654,741	5
Oregon	1201	Oregon	Washington, Multnomah, Clackamas	45,600	5
Pennsylvania	1161	Pennsylvania	Lehigh	6,598	3
Pennsylvania	1388	Pennsylvania	Allegheny	22,000	3
Pennsylvania	1454	Pennsylvania	Bucks	55,000	3
Rhode Island	464	Rhode Island	Providence	240,000	1
Rhode Island	76	Rhode Island	Providence	10,000	5
Rhode Island	835	Rhode Island	Bristol	11,000	3
South Carolina	1159	South Carolina	Florence, Darlington	45,000	3
South Carolina	1549	South Carolina	Greenville	140,280	4
South Carolina	600	South Carolina	Greenwood	48,000	6

Jurisdiction	Sewershed ID	Reporting Jurisdiction	County	Population Served	CL
South Dakota	1165	South Dakota	Yankton	15,500	N
South Dakota	493	South Dakota	Beadle	13,289	4
Tennessee	1283	Tennessee	Davidson	600,000	3
Tennessee	1329	Tennessee	Shelby	300,000	4
Tennessee	1508	Tennessee	Hawkins, Sullivan	60,500	6
Tennessee	1539	Tennessee	Sullivan	50,000	3
Tennessee	496	Tennessee	Bradley	52,000	7
Texas	1140	Texas	Travis	500,000	4
Texas	1210	Texas	Dallas	900,000	5
Texas	1494	Texas	Galveston	20,000	6
Texas	593	Texas	Galveston	89,600	6
Texas	681	Texas	El Paso	142,000	n
Texas	805	Texas	Dallas	900,000	N
Texas	811	Texas	Bexar	415,000	4
Texas	847	Texas	Bexar	230,000	4
Texas	848	Texas	Bexar	630,000	5
Texas	863	Texas	Webb	30,000	4
Utah	1270	Utah	Tooele	13,000	5
Virginia	1113	Virginia	Arlington	207,627	4
Virginia	1202	Virginia	Frederick	51,470	2
Virginia	1259	Virginia	Clifton Forge City	5,000	n
Virginia	1259	Virginia	Clifton Forge City	5,000	2
Virginia	1272	Virginia	Franklin	5,000	n
Virginia	1275	Virginia	Hampton City, Newport News City	141,543	4
Virginia	1338	Virginia	Mecklenburg	5,300	5
Virginia	540	Virginia	Henry	16,000	3
Vermont	1080	Vermont	Chittenden	31,000	n
Vermont	1080	Vermont	Chittenden	31,000	7
Vermont	1452	Vermont	Caledonia	3,500	1
Vermont	1520	Vermont	Washington	15,000	n
Vermont	701	Vermont	Chittenden	8,500	5
Vermont	770	Vermont	Franklin	7,500	6
Washington	1084	Washington	Clark	120,000	n
Washington	1084	Washington	Clark	120,000	3
Washington	499	Washington	Clark	162,100	n
Washington	510	Washington	Clark	81,140	n
Washington	510	Washington	Clark	81,140	4
Wyoming	1317	Wyoming	Sweetwater	12,000	2
Wyoming	1353	Wyoming	Sheridan	20,000	n
Arizona	1053	Arizona	Yuma	8,271	N
Arizona	1059	Arizona	Yuma	18,039	5
Arizona	1061	Arizona	Yuma	25,369	7
Arizona	1212	Arizona	Maricopa	53,578	N
Arizona	1212	Arizona	Maricopa	17,280	N
Arizona	1212	Arizona	Maricopa	9,430	N
Arizona	1212	Arizona	Maricopa	9,848	N
Arizona	1212	Arizona	Maricopa	12,542	N
California	1019	California	Lake	13,200	5
California	126	California	Yolo	70,717	N

Jurisdiction	Sewershed ID	Reporting Jurisdiction	County	Population Served	C L
California	1373	California	Stanislaus	230,000	N
California	1377	California	Yolo	7,285	N
California	1378	California	Yolo	59,000	N
California	137	California	Alameda, Contra Costa	740,000	5
California	1524	California	Plumas	4,217	N
California	158	California	Fresno	650,000	4
California	211	California	Los Angeles	3,500,000	6
California	305	California	Santa Clara	236,000	5
California	353	California	Santa Clara	1,500,000	6
California	354	California	Santa Clara	153,000	7
California	362	California	San Francisco, San Mateo	250,000	6
California	362	California	San Mateo, San Francisco	250,000	N
California	59	California	Kern	168,750	N
Colorado	1024	Colorado	Archuleta	27,857	1
Colorado	1111	Colorado	Teller	7,143	4
Colorado	1135	Colorado	Teller	6,379	2
Colorado	1154	Colorado	Pitkin	17,571	8
Colorado	116	Colorado	El Paso	102,203	2
Colorado	117	Colorado	El Paso	303,855	3
Colorado	122	Colorado	Summit	7,857	7
Colorado	1514	Colorado	El Paso	5,936	6
Colorado	1517	Colorado	El Paso	10,000	5
Colorado	1518	Colorado	El Paso	9,286	5
Colorado	151	Colorado	Larimer	92,126	2
Colorado	152	Colorado	Larimer	26,621	2
Colorado	1563	Colorado	Elbert	3,571	2
Colorado	1591	Colorado	Otero	29,643	2
Colorado	163	Colorado	Weld	83,319	4
Colorado	224	Colorado	Boulder, Weld	75,543	3
Colorado	251	Colorado	Denver	345,453	5
Colorado	368	Colorado	Adams	54,560	4
Colorado	370	Colorado	Larimer	23,193	2
Colorado	372	Colorado	Arapahoe, Denver	247,443	3
Colorado	408	Colorado	Summit	35,643	6
Colorado	49	Colorado	Arapahoe, Adams	268,003	3
Colorado	578	Colorado	Las Animas	14,286	1
Colorado	58	Colorado	Weld, Larimer	7,946	4
Colorado	656	Colorado	La Plata	23,429	4
Colorado	66	Colorado	Boulder	89,383	4
Colorado	72	Colorado	Broomfield	53,355	4
Colorado	747	Colorado	Arapahoe	25,714	3
Colorado	748	Colorado	El Paso	34,286	5
Colorado	841	Colorado	Adams	21,429	5
Colorado	843	Colorado	Eagle	30,714	6
Colorado	844	Colorado	Eagle	19,286	5
Colorado	845	Colorado	Summit	14,286	3
Colorado	887	Colorado	Summit	18,571	7
Delaware	1183	Delaware	Sussex	7,000	6
Delaware	1185	Delaware	Sussex	4,392	7

Jurisdiction	Sewershed ID	Reporting Jurisdiction	County	Population Served	C L
Delaware	1187	Delaware	New Castle	17,145	4
Delaware	1192	Delaware	Sussex	7,000	7
Delaware	1194	Delaware	New Castle	539,000	6
Georgia	1071	Georgia	Paulding	10,000	5
Georgia	1073	Georgia	Cobb	190,000	8
Georgia	1309	Georgia	Newton	32,000	3
Georgia	1723	Georgia	Laurens	17,000	2
Georgia	1728	Georgia	Cobb	190,000	5
Georgia	1747	Georgia	Lowndes	19,400	n
Georgia	1819	Georgia	Clarke	16,000	n
Georgia	1820	Georgia	Floyd	75,000	3
Idaho	1067	Idaho	Twin Falls	48,951	N
Idaho	1225	Idaho	Bingham	14,045	N
Idaho	1228	Idaho	Caribou	3,200	N
Idaho	1249	Idaho	Blaine	5,338	N
Idaho	1406	Idaho	Elmore	5,500	5
Idaho	1801	Idaho	Payette	6,350	N
Idaho	1802	Idaho	Elmore	16,000	N
Idaho	1803	Idaho	Canyon	100,200	n
Idaho	1914	Idaho	Kootenai	24,000	n
Idaho	818	Idaho	Ada	120,344	5
Illinois	1243	Illinois	Du Page	76,324	7
Illinois	1527	Illinois	Kendall	13,477	6
Illinois	1610	Illinois	Washington	3,425	4
Illinois	1816	Illinois	Madison	26,000	n
Illinois	1847	Illinois	Du Page	65,000	3
Illinois	1943	Illinois	Sangamon	100,000	n
Illinois	603	Illinois	Kane	11,290	3
Illinois	605	Illinois	Saint Clair	26,150	4
Illinois	606	Illinois	Saint Clair	26,150	5
Illinois	607	Illinois	Boone	25,134	6
Illinois	611	Illinois	Fulton	13,506	6
Illinois	612	Illinois	Greene	3,064	4
Illinois	619	Illinois	Vermilion	30,479	6
Illinois	620	Illinois	Macon	88,500	4
Illinois	621	Illinois	Perry	6,448	7
Illinois	625	Illinois	Jo Daviess	3,460	5
Illinois	631	Illinois	McDonough	22,004	8
Illinois	632	Illinois	Cook	270,647	5
Illinois	633	Illinois	Warren	10,836	4
Illinois	634	Illinois	Jefferson	21,169	N
Illinois	635	Chicago	Cook	3,816	7
Illinois	638	Illinois	Cook	1,127,737	7
Illinois	642	Illinois	Du Page	128,358	5
Illinois	647	Illinois	Peoria	157,379	4
Illinois	655	Illinois	Champaign	91,041	7
Illinois	675	Chicago	Cook	29,370	5
Illinois	675	Chicago	Cook	83,455	5
Illinois	675	Chicago	Cook	24,099	6

Jurisdiction	Sewershed ID	Reporting Jurisdiction	County	Population Served	CL
Illinois	697	Illinois	Rock Island	25,202	6
Illinois	698	Illinois	Rock Island	43,768	6
Illinois	699	Illinois	Tazewell	30,997	6
Illinois	871	Illinois	La Salle	18,307	3
Illinois	894	Illinois	Lee	15,115	6
Illinois	972	Illinois	Saint Clair	32,289	7
Illinois	978	Illinois	Mclean	42,000	5
Illinois	979	Illinois	Mclean	44,238	6
Illinois	980	Illinois	Mclean	44,237	4
Illinois	981	Illinois	De Kalb	43,862	5
Illinois	982	Illinois	Cook	1,263,110	5
Indiana	1458	Indiana	Noble	10,000	6
Indiana	1480	Indiana	Rush	6,208	n
Indiana	1480	Indiana	Rush	6,208	6
Indiana	1482	Indiana	Porter	36,000	7
Kentucky	1254	Kentucky	Rowan	15,212	5
Kentucky	1255	Kentucky	Johnson	5,258	7
Kentucky	1582	Kentucky	Caldwell	6,108	N
Kentucky	1583	Kentucky	Allen	4,557	N
Kentucky	1767	Kentucky	Lee	3,138	N
Kentucky	1770	Kentucky	Christian	33,426	N
Michigan	1018	Michigan	Bay	20,000	5
Michigan	1020	Michigan	Dickinson	3,200	3
Michigan	1039	Michigan	Saint Joseph	7,623	N
Michigan	1040	Michigan	Ottawa	3,535	4
Michigan	1040	Michigan	Ottawa	11,200	3
Michigan	1048	Michigan	Calhoun	6,964	1
Michigan	1086	Michigan	Ottawa	20,000	6
Michigan	1087	Michigan	Genesee	72,240	N
Michigan	1088	Michigan	Ottawa	25,000	5
Michigan	1091	Michigan	Schoolcraft	3,412	6
Michigan	1092	Michigan	Chippewa	15,000	4
Michigan	1096	Michigan	Muskegon	125,000	5
Michigan	1102	Michigan	Dickinson	13,500	1
Michigan	1121	Michigan	Saginaw	6,300	6
Michigan	1122	Michigan	Otsego	3,670	3
Michigan	1125	Michigan	Marquette	3,500	n
Michigan	1125	Michigan	Marquette	4,500	n
Michigan	1125	Michigan	Marquette	4,500	n
Michigan	1136	Michigan	Clare	3,042	N
Michigan	1138	Michigan	Isabella	25,629	N
Michigan	1155	Michigan	Tuscola	3,000	1
Michigan	1167	Michigan	Kent	15,000	N
Michigan	1168	Michigan	Kent	68,000	N
Michigan	1315	Michigan	Macomb	135,000	4
Michigan	1598	Michigan	Wexford	10,450	N
Michigan	1599	Michigan	Eaton	9,074	6
Michigan	1600	Michigan	Mason	8,100	N
Michigan	1729	Michigan	Wayne	5,190	N

Jurisdiction	Sewershed ID	Reporting Jurisdiction	County	Population Served	C L
Michigan	1729	Michigan	Oakland	3,080	N
Michigan	1729	Michigan	Oakland	5,800	N
Michigan	1729	Michigan	Macomb	19,662	2
Michigan	1729	Michigan	Macomb	29,555	3
Michigan	1815	Michigan	Arenac	5,500	3
Michigan	1941	Michigan	Macomb	16,300	3
Michigan	756	Michigan	Kent	265,000	N
Michigan	757	Michigan	Jackson	90,000	5
Michigan	800	Michigan	Genesee	95,000	5
Michigan	801	Michigan	Grand Traverse	45,000	1
Michigan	823	Michigan	Houghton	14,000	5
Michigan	860	Michigan	Gratiot	8,976	N
Michigan	874	Michigan	Emmet	7,900	3
Michigan	889	Michigan	Ottawa	6,657	2
Michigan	889	Michigan	Ottawa	6,524	5
Michigan	889	Michigan	Ottawa	45,608	2
Michigan	890	Michigan	Ottawa	15,498	5
Michigan	890	Michigan	Ottawa	8,278	4
Michigan	890	Michigan	Ottawa	36,912	4
Michigan	891	Michigan	Kalamazoo	12,366	4
Michigan	891	Michigan	Kalamazoo	14,378	7
Michigan	891	Michigan	Kalamazoo	39,068	5
Michigan	896	Michigan	Wayne, Macomb	492,000	N
Michigan	898	Michigan	Oakland, Wayne	840,600	N
Missouri	139	Missouri	Miller	4,895	6
Missouri	143	Missouri	Saint Francois	10,114	3
Missouri	159	Missouri	Callaway	12,790	N
Missouri	171	Missouri	Marion, Ralls	16,000	3
Missouri	190	Missouri	Cole, Callaway	41,153	5
Missouri	192	Missouri	Jasper	34,403	7
Missouri	194	Missouri	Clay, Platte	76,759	5
Missouri	195	Missouri	Cass, Jackson, Johnson	490,000	6
Missouri	196	Missouri	Jackson	25,000	4
Missouri	198	Missouri	Clay	12,000	4
Missouri	200	Missouri	Johnson, Jackson, Wyandotte	61,250	5
Missouri	202	Missouri	Dunklin	11,300	7
Missouri	218	Missouri	Clay	35,300	5
Missouri	265	Missouri	Saint Louis	149,112	5
Missouri	266	Missouri	Jefferson, Saint Louis	24,174	6
Missouri	280	Missouri	Vernon	8,082	3
Missouri	284	Missouri	Christian	20,000	5
Missouri	312	Missouri	Perry	9,000	4
Missouri	317	Missouri	Platte	8,000	6
Missouri	321	Missouri	Butler	17,000	N
Missouri	359	Missouri	Pettis	8,250	N
Missouri	365	Missouri	New Madrid, Scott	17,000	5
Missouri	380	Missouri	Greene	22,818	3
Missouri	404	Missouri	Lincoln	12,019	3
Missouri	407	Missouri	Franklin	7,936	6

Jurisdiction	Sewershed ID	Reporting Jurisdiction	County	Population Served	C L
Missouri	424	Missouri	Johnson	14,477	5
Missouri	438	Missouri	Saint Charles	44,852	4
Missouri	441	Missouri	Howell	12,000	4
Missouri	63	Missouri	Polk	10,500	4
Missouri	68	Missouri	Taney	10,559	4
Missouri	827	Missouri	Dent	4,512	5
Missouri	858	Missouri	Jackson, Cass	367,300	4
North Carolina	144	North Carolina	Cumberland	151,589	5
North Carolina	1611	North Carolina	Davidson, Guilford	116,390	6
North Carolina	166	North Carolina	Guilford	135,821	6
North Carolina	216	North Carolina	Scotland	15,527	6
North Carolina	271	North Carolina	Buncombe, Henderson	173,000	4
North Carolina	303	North Carolina	Orange, Durham	78,141	7
North Carolina	334	North Carolina	Wake	30,655	6
North Carolina	345	North Carolina	Northampton, Halifax	14,320	5
North Carolina	369	North Carolina	Orange, Durham	108,105	5
North Carolina	405	North Carolina	Jackson	13,296	5
North Carolina	450	North Carolina	New Hanover	58,361	4
North Carolina	452	North Carolina	Forsyth	178,000	5
North Carolina	53	North Carolina	Carteret	3,500	7
North Carolina	84	North Carolina	Wake	84,189	7
North Carolina	85	North Carolina	Wake	74,331	6
North Carolina	92	North Carolina	Mecklenburg	68,685	4
North Carolina	93	North Carolina	Mecklenburg	182,501	6
North Carolina	94	North Carolina	Mecklenburg	120,000	5
Nebraska	1331	Nebraska	York	8,000	6
Nebraska	1799	Nebraska	Nemaha	3,800	9
Nebraska	915	Nebraska	Dawes	5,561	8
Nebraska	918	Nebraska	Hall	52,000	7
Nebraska	920	Nebraska	Buffalo	33,790	8
Nebraska	922	Nebraska	Lancaster	100,000	7
Nebraska	925	Nebraska	Lancaster	200,000	7
Nebraska	926	Nebraska	Wayne	5,560	7
New Mexico	1340	New Mexico	Dona Ana	8,127	N
New Mexico	1362	New Mexico	Luna	14,000	N
New Mexico	1374	New Mexico	Grant	9,000	N
New Mexico	1418	New Mexico	San Juan	45,000	N
New Mexico	1475	New Mexico	Otero	36,000	N
New Mexico	1511	New Mexico	Mckinley	25,000	n
New York	1009	New York	Niagara	48,196	9
New York	1013	New York	Erie	71,131	9
New York	1013	New York	Erie	14,742	8
New York	1022	New York	Schenectady	78,444	4
New York	1042	New York	Columbia	6,374	5
New York	1044	New York	Suffolk	24,147	1
New York	1045	New York	Essex	6,264	3
New York	1068	New York	Tompkins	56,967	9
New York	1099	New York	Wyoming	3,448	N
New York	1112	New York	Albany	109,426	0

Jurisdiction	Sewershed ID	Reporting Jurisdiction	County	Population Served	C L
New York	1150	New York	Suffolk	7,741	6
New York	1171	New York	Schoharie	5,326	3
New York	123	New York	Steuben	10,605	2
New York	1325	New York	Franklin	4,918	2
New York	1335	New York	Chemung	38,037	5
New York	1404	New York	Rockland	10,890	2
New York	1405	New York	Rockland	4,115	3
New York	1460	New York	Orange	28,914	2
New York	1484	New York	Westchester	94,095	3
New York	1486	New York	Westchester	40,301	3
New York	1488	New York	Westchester	31,046	4
New York	1504	New York	Sullivan	6,639	4
New York	1538	New York	Sullivan	4,548	4
New York	1557	New York	Orange	6,563	5
New York	1797	New York	Dutchess	21,516	n
New York	1821	New York	Dutchess	14,525	n
New York	1844	New York	Saint Lawrence	22,552	4
New York	1852	New York	Saint Lawrence	14,475	n
New York	1855	New York	Albany	31,023	n
New York	1931	New York	Albany	21,281	n
New York	1937	New York	Livingston	5,361	n
New York	477	New York	Essex	3,076	4
New York	483	New York	Delaware	3,581	1
New York	513	New York	Onondaga	30,613	4
New York	515	New York	Madison	4,843	4
New York	519	New York	Orange	6,369	3
New York	522	New York	Orange	27,434	2
New York	524	New York	Orange	36,227	4
New York	529	New York	Orange	8,568	2
New York	531	New York	Jefferson	4,077	2
New York	532	New York	Onondaga	25,965	9
New York	580	New York	Monroe	43,074	2
New York	689	New York	Tompkins	9,770	1
New York	694	New York	Franklin	7,175	6
New York	695	New York	Oswego	14,199	3
New York	721	New York	Rensselaer	79,699	4
New York	722	New York	Saratoga	152,482	6
New York	723	New York	Seneca	6,961	1
New York	776	New York	Ulster	26,599	4
New York	869	New York	Warren	23,462	4
New York	986	New York	Washington	12,260	5
New York	998	New York	Erie	431,141	8
Ohio	112	Ohio	Wayne	27,000	6
Ohio	127	Ohio	Montgomery	226,729	8
Ohio	140	Ohio	Lorain	54,500	7
Ohio	157	Ohio	Sandusky	25,000	6
Ohio	1805	Ohio	Huron	3,276	4
Ohio	186	Ohio	Lawrence	10,445	8
Ohio	205	Ohio	Hardin	8,500	5

Jurisdiction	Sewershed ID	Reporting Jurisdiction	County	Population Served	C L
Ohio	214	Ohio	Fairfield	24,303	5
Ohio	233	Ohio	Richland	52,000	5
Ohio	235	Ohio	Washington	15,284	3
Ohio	263	Ohio	Knox	18,000	N
Ohio	273	Ohio	Hamilton	125,247	5
Ohio	274	Ohio	Henry	12,246	5
Ohio	291	Ohio	Huron	17,000	6
Ohio	301	Ohio	Lucas	44,680	4
Ohio	304	Ohio	Butler	22,000	8
Ohio	309	Ohio	Licking	3,300	8
Ohio	315	Ohio	Miami	20,581	N
Ohio	326	Ohio	Scioto	20,366	6
Ohio	36	Ohio	Summit	377,378	4
Ohio	395	Ohio	Hamilton	83,058	7
Ohio	398	Ohio	Lucas	372,208	4
Ohio	403	Ohio	Montgomery	65,000	6
Ohio	411	Ohio	Wyandot	6,700	4
Ohio	442	Ohio	Montgomery	113,629	5
Ohio	54	Ohio	Greene	46,160	4
Ohio	79	Ohio	Stark	85,000	5
Ohio	859	Ohio	Mercer	4,800	7
Oregon	934	Oregon	Benton	58,856	3
Oregon	935	Oregon	Polk	16,555	2
Oregon	936	Oregon	Lane	8,925	1
Oregon	940	Oregon	Deschutes	32,255	N
Oregon	942	Oregon	Washington	220,000	N
Oregon	943	Oregon	Washington	40,000	N
Oregon	945	Oregon	Multnomah	662,235	N
Oregon	947	Oregon	Lane	10,200	N
Oregon	949	Oregon	Washington	40,000	N
Oregon	951	Oregon	Umatilla	18,775	4
Oregon	953	Oregon	Klamath	20,840	2
Oregon	955	Oregon	Yamhill	34,615	2
Oregon	959	Oregon	Umatilla	17,500	N
Oregon	961	Oregon	Marion	229,000	N
Oregon	965	Oregon	Marion	10,520	4
Oregon	967	Oregon	Marion	10,840	N
Oregon	969	Oregon	Umatilla	7,605	N
Oregon	971	Oregon	Lane	235,155	2
Pennsylvania	1357	Pennsylvania	Montgomery	30,000	6
Pennsylvania	1358	Pennsylvania	Cumberland	25,000	3
Pennsylvania	1359	Pennsylvania	Erie	200,000	3
Pennsylvania	1367	Pennsylvania	Franklin	67,000	3
Pennsylvania	1455	Pennsylvania	Delaware	6,800	6
Pennsylvania	1553	Pennsylvania	Mckean	14,194	4
Pennsylvania	1554	Pennsylvania	Mercer	16,000	4
Pennsylvania	1775	Pennsylvania	Lackawanna	15,700	n
Pennsylvania	1775	Pennsylvania	Lackawanna	15,700	4
Pennsylvania	1776	Pennsylvania	Mercer	19,000	3

Jurisdiction	Sewershed ID	Reporting Jurisdiction	County	Population Served	CL
Pennsylvania	1809	Pennsylvania	Chester	13,500	6
South Carolina	1871	South Carolina	Beaufort	20,000	n
South Carolina	877	South Carolina	Kershaw	8,825	7
South Carolina	878	South Carolina	Charleston	64,170	1
South Carolina	883	South Carolina	York	88,000	8
South Carolina	884	South Carolina	Greenville	400,000	8
South Carolina	885	South Carolina	Georgetown	30,000	7
South Carolina	908	South Carolina	Richland	60,000	6
South Carolina	909	South Carolina	Horry	195,000	6
Texas	135	Houston	Harris	16,030	4
Texas	149	Houston	Harris	4,170	5
Texas	160	Houston	Harris	40,689	7
Texas	183	Houston	Harris	16,804	6
Texas	1934	Texas	Mclennan	193,820	N
Texas	201	Houston	Harris	124,000	7
Texas	207	Houston	Harris, Montgomery	52,055	5
Texas	250	Houston	Harris	20,161	4
Texas	289	Houston	Harris	19,867	6
Texas	290	Houston	Harris	95,600	6
Texas	307	Houston	Harris	5,497	4
Texas	35	Houston	Harris	551,150	5
Texas	366	Houston	Harris	109,414	6
Texas	367	Houston	Harris	109,414	7
Texas	406	Houston	Harris	59,188	5
Texas	40	Houston	Harris	117,968	7
Texas	435	Houston	Harris	33,645	3
Texas	439	Houston	Harris	85,129	6
Texas	443	Houston	Harris	3,623	6
Texas	449	Houston	Harris	8,610	7
Texas	56	Houston	Harris	70,900	6
Texas	97	Houston	Harris	37,359	6
Utah	10	Utah	Cache	9,095	6
Utah	11	Utah	Salt Lake	89,507	7
Utah	11	Utah	Salt Lake, Utah	94,484	7
Utah	12	Utah	Cache	94,005	7
Utah	15	Utah	Grand, San Juan	9,896	4
Utah	16	Utah	Weber, Davis	228,700	7
Utah	18	Utah	Utah	102,624	8
Utah	19	Utah	Carbon	17,312	4
Utah	20	Utah	Utah	21,231	6
Utah	21	Utah	Duchesne	6,790	4
Utah	22	Utah	Summit	24,374	8
Utah	24	Utah	Davis	84,981	6
Utah	26	Utah	Utah	53,313	8
Utah	28	Utah	Salt Lake	209,645	9
Utah	2	Utah	Uintah	29,513	4
Utah	33	Utah	Utah	253,112	7
Utah	5	Utah	Iron	32,451	5
Utah	9	Utah	Davis, Weber	208,850	6

Jurisdiction	Sewershed ID	Reporting Jurisdiction	County	Population Served	CL
Virginia	1237	Virginia	Tazewell	4,600	N
Virginia	1576	Virginia	Loudoun	300,000	5
Virginia	1576	Virginia	Loudoun	300,000	n
Virginia	177	Virginia	Chesapeake City, Norfolk City, Virginia Beach City	530,848	6
Virginia	178	Virginia	Isle Of Wight, Suffolk City, Chesapeake City, Portsmouth City	197,608	7
Virginia	181	Virginia	Williamsburg City, Newport News City, York, New Kent, James City	69,059	4
Virginia	1826	Virginia	Wise	14,000	6
Virginia	1828	Virginia	Stafford	44,000	N
Virginia	1829	Virginia	Amherst, Campbell, Bedford	220,000	6
Virginia	1831	Virginia	Rockingham, Harrisonburg City	81,000	7
Virginia	1833	Virginia	Montgomery, Pulaski, Radford	70,000	7
Virginia	1834	Virginia	Roanoke, Roanoke City, Salem, Botetourt	300,000	3
Virginia	1837	Virginia	Russell	3,100	4
Virginia	38	Virginia	Alexandria City, Fairfax	300,000	6
Virginia	38	Virginia	Alexandria City, Fairfax	300,000	n
Virginia	61	Virginia	Montgomery	52,500	8
Washington	1076	Washington	Chelan	35,550	6
Washington	1143	Washington	Pierce	43,000	N
Washington	1397	Washington	Pierce	295,855	N
Washington	1635	Washington	Yakima	117,072	6
Washington	754	Washington	Benton	59,609	N
Washington	755	Washington	Benton	15,000	6
Washington	758	Washington	Benton	83,000	7
Washington	760	Washington	Spokane	120,000	4
Wisconsin	120	Wisconsin	Columbia	6,900	N
Wisconsin	128	Wisconsin	Brown	43,000	5
Wisconsin	153	Wisconsin	Waukesha	51,000	4
Wisconsin	164	Wisconsin	Brown, Kewaunee	189,000	3
Wisconsin	172	Wisconsin	Washington, Dodge	17,320	4
Wisconsin	1851	Wisconsin	Walworth	28,000	2
Wisconsin	189	Wisconsin	Rock	63,000	3
Wisconsin	203	Wisconsin	Kenosha	122,000	5
Wisconsin	209	Wisconsin	La Crosse	85,000	6
Wisconsin	223	Wisconsin	Columbia	3,100	5
Wisconsin	243	Wisconsin	Juneau	4,400	3
Wisconsin	246	Wisconsin	Dunn	5,000	4
Wisconsin	248	Wisconsin	Lincoln	9,700	5
Wisconsin	256	Wisconsin	Ozaukee, Milwaukee	470,007	4
Wisconsin	257	Wisconsin	Waukesha, Milwaukee, Racine, Washington, Ozaukee	615,934	2
Wisconsin	260	Wisconsin	Green	11,000	2
Wisconsin	297	Wisconsin	Jefferson, Waukesha	22,300	4
Wisconsin	302	Wisconsin	Winnebago	78,300	5
Wisconsin	320	Wisconsin	Sheboygan	9,150	5
Wisconsin	325	Wisconsin	Columbia	11,000	N
Wisconsin	389	Wisconsin	Portage	27,000	6

Jurisdiction	Sewershed ID	Reporting Jurisdiction	County	Population Served	CL
Wisconsin	392	Wisconsin	Douglas	28,000	6
Wisconsin	41	Wisconsin	Outagamie, Winnebago, Calumet	72,810	4
Wisconsin	432	Wisconsin	Waupaca	8,000	6
Wisconsin	433	Wisconsin	Marathon	42,350	2
West Virginia	1250	West Virginia	Boone	4,555	N
West Virginia	1860	West Virginia	Kanawha	9,000	N
West Virginia	1861	West Virginia	Wayne, Cabell	56,000	7
West Virginia	1864	West Virginia	Cabell	11,250	3
West Virginia	206	West Virginia	Mineral	8,168	N
West Virginia	445	West Virginia	Ohio	50,000	N
West Virginia	466	West Virginia	Mercer	36,000	6
Alabama	1716	Alabama	Jefferson	30,000	7
Alabama	1718	Alabama	Jefferson	225,000	7
California	1378	California	Yolo	59,000	3
California	1674	California	San Benito	42,000	5
California	1680	California	Sonoma	230,000	7
California	1684	California	San Diego	2,200,000	5
California	1690	California	Los Angeles	4,000,000	4
California	1695	California	Marin	30,000	7
California	1703	California	Marin	53,000	6
California	1732	California	Alameda	229,476	4
California	1756	California	Monterey	262,000	7
California	1760	California	Yolo	4,006	4
California	1766	California	Yolo	7,286	3
California	1784	California	Marin	30,000	3
California	1790	California	Orange	120,000	3
California	1793	California	Sonoma	28,000	2
California	1869	California	Riverside	350,000	n
Delaware	1930	Delaware	Sussex	13,172	n
Florida	1631	Florida	Orange	50,000	5
Florida	1699	Florida	Palm Beach	90,000	5
Florida	1735	Florida	Seminole	95,000	3
Florida	1841	Florida	Miami-Dade	920,528	4
Georgia	1663	Georgia	Fulton	189,593	4
Georgia	1697	Georgia	Fulton	12,818	7
Iowa	1783	Iowa	Muscatine	24,400	5
Iowa	1791	Iowa	Wapello	25,529	2
Idaho	1842	Idaho	Ada	186,901	5
Idaho	813	Idaho	Ada	108,556	5
Illinois	1721	Illinois	Du Page	63,000	7
Indiana	1738	Indiana	Clark	25,000	6
Kansas	1696	Kansas	Douglas	800,000	6
Kansas	1813	Kansas	Wyandotte	15,000	5
Maryland	1782	Maryland	Washington	90,000	3
Maryland	1808	Maryland	Saint Marys	55,000	3
Maine	1843	Maine	York	10,000	4
Michigan	1682	Michigan	Macomb	140,000	5
Michigan	1691	Michigan	Jackson	90,000	6
Michigan	1781	Michigan	Kent	75,000	4

Jurisdiction	Sewershed ID	Reporting Jurisdiction	County	Population Served	Count
Minnesota	1675	Minnesota	Blue Earth, Nicollet	70,000	8
North Carolina	1662	North Carolina	Forsyth	92,000	5
North Carolina	569	North Carolina	Lenoir	25,000	7
New Hampshire	1755	New Hampshire	Strafford	30,000	6
Ohio	1779	Ohio	Mahoning	174,000	6
Pennsylvania	1667	Pennsylvania	Dauphin	125,000	3
Pennsylvania	1737	Pennsylvania	Delaware	220,000	5
Utah	1708	Utah	Utah	115,000	6

Data Table for Wastewater Surveillance Current Virus Levels (in %)

Terms to Know

Virus levels: SARS-CoV-2 viral RNA concentrations in wastewater. RNA is the virus's genetic material.

Normalization: A statistical method to account for differences in variables such as wastewater flow rate and number served by a sewer system. In other words, normalization reduces excess variation (or "noise") and helps account for the changing population sizes or weather events that can impact wastewater. Normalized data can be compared over time at different sites. Metrics presented on this page are based on SARS-CoV-2 viral RNA concentrations in wastewater that have been normalized. See the [NWSS Data Analytics page](#) for more information.

Sewershed: The geographic area contributing wastewater to a sampling location. Sewersheds may cross county or state boundaries. Sewersheds are referred to as "sites" on the map.

About the Data

†Data will update Monday through Friday as soon as they are reviewed and verified, oftentimes before 8 pm ET. Updates may be delayed the following day when reporting coincides with a federal holiday. Note: Daily updates (Mon-Fri) might be delayed due to reporting delays.

Percent of sites in each percent change category over time

- At any point in time, this chart shows what percent of sites reported decreased levels of virus in the previous 15 days, what percent reported increased levels, and what percent stayed the same.
- Viewed over time, the chart shows how this distribution changed.
- For each date, the number of sites in each percent change category is counted and divided by the total number of sites with current data. This information is provided on a stacked area chart to show the change in the percent of sites in each percent change category since January 1, 2021.
- To simplify the chart, the "-9% to 0%" and "1% to 9%" categories were combined into "-9% to 9%," and the "100% to 1000% or more" categories were combined into "100% or more." Because the number of sampling sites has changed since January 1, 2021, the total number of sites with current data is shown as a black line on the chart.
- Not all sites have data since January 1, 2021, and not all sites have data for all dates shown on the chart.
- The percent of sites in each percent change category for each date may not add up to 100% due to rounding.

Current virus levels in wastewater by site

- This metric shows whether SARS-CoV-2 levels at a site are currently higher or lower than past levels at the same site. The metric is calculated by first ordering the SARS-CoV-2 levels in wastewater for all samples collected since December 1, 2021, from lowest to highest level. The ordered levels are then grouped into five categories (0-19%, 20-39%, 40-59%, 60-79%, and 80-100%) based on how low or high their levels are compared to previous levels. The levels in the 0-19% group represent the lowest levels at that sampling site and those in the 80-100% group represent the highest.
- Using December 1, 2021 as a starting date for all sites makes data more comparable between sites. Sites that began reporting wastewater data after December 1, 2021 are not comparable to sites that have been reporting data since December 1, 2021 because the data history for these new sites is not long enough to reflect the same surges as the other sites.
- The "New site" category means a site just started collecting wastewater samples and has reported fewer than 10 samples. Sites with fewer than 10 samples are not enough samples to meaningfully compare levels at the site over time.

Percent change in the last 15 days

- This metric shows how much normalized SARS-CoV-2 viral levels in wastewater at each site increased or decreased over the current 15-day time period. This metric does not show overall levels of SARS-CoV-2 in wastewater. Percent change is calculated as the modeled change over 15 days, based on linear regression of log-transformed viral levels. A large percent increase does not necessarily mean SARS-CoV-2 levels in wastewater are high. For instance, a change from 1 unit to 2 units would be a percent change of 100%. A change from 1 million units to 2 million units is also a percent change of 100%.
- Percent change is calculated as the modeled change over 15 days, based on linear regression of log-transformed viral levels. A site must report at least 2 samples over the 15-day period to calculate percent change. Sites with "No report" (colored gray on the map) reported fewer than 2 samples for the current 15-day period.

Percent of wastewater samples with detectable virus in the last 15 days

- This metric shows the percent of wastewater samples at each site that were positive for SARS-CoV-2 RNA over the past 15 days. This metric does not show overall levels of SARS-CoV-2 in wastewater.
- This metric is calculated by dividing the number of samples in which SARS-CoV-2 was detected at a site by the total number of samples collected for the site during the 15-day period and multiplying by 100.
- Sites with at least one sample and no SARS-CoV-2 viral detections over the past 15 days are listed as "Non-detect" and shown on the map as hollow circles with a black outline.
- Sites with no samples for the current 15-day period are listed as "No recent data" and colored gray on the map.

SARS-CoV-2 concentrations in wastewater over time

- When a site is selected, a smoothed, spline fit SARS-CoV-2 concentration line is shown for the last 4 months, as data is available. The smoothed SARS-CoV-2 concentration line shows how SARS-CoV-2 concentrations in wastewater at that site have changed over the last 4 months.
- At least 4 samples are required to produce the smoothed SARS-CoV-2 concentration line. If a major change in lab methods is reported, only data since the new laboratory method was reported are shown. Sites labeled as "New" or "Limited" for current virus levels in wastewater metric should be viewed with caution since they have only a few samples to generate trends lines.

Category change in the last 7 days

- This metric shows the change in the number of sites (represented as a percent) that are in a specific metric category. For example, the 15-day percent change category of 1000% or more compared to the previous 7 days. In other words, many sites have been added or removed from the metric category in the past week. It is calculated by subtracting the number of sites in each metric category from the number of sites in the same category 7 days earlier and dividing by the number of sites in the same category 7 days earlier.
- **If a metric category had no sites in it 7 days earlier, the category change in the last 7 days is listed as "N/A**" since you cannot divide by 0.

County-level data

- Data are presented by sewershed (the geographic area contributing wastewater to a sampling location). Sampling locations can be at wastewater treatment plants or upstream in the sewage network. Sewersheds may cross county or state boundaries, which means multiple sewersheds may serve a single county, and a single sewershed may serve multiple counties. Sewersheds are referred to as "sites" on the map.

Sewershed locations

- Data are plotted in the ZIP code of the sampling location, so points on the map do not correspond exactly to sewer shed boundaries.
- All counties represented by a sampling location are highlighted when the sampling location point is selected.
- The District of Columbia (DC) and New York City (NYC) are shown separately on the map to denote sampling locations within that jurisdiction. In the "State or Territory" dropdown menu, select "District of Columbia" or "New York City" to zoom to the location within that jurisdiction. Please note some DC sampling locations may receive wastewater from parts of counties in Maryland and some NYC sampling locations may receive wastewater from parts of counties in surrounding state.

Data subject to change

- Wastewater disease surveillance data presented are the best available data and are subject to change. These data may be incomplete for the most recent 15-day period due to processing and reporting delays. All data are provisional.

May 2022 Coverage Limitations

- Beginning April 15, 2022, approximately 150 wastewater sites in 29 states began transitioning to a new wastewater data provider. During this transition, these sites will not have recent data displayed and will be colored gray on the map until they have several weeks for enough data to be collected to calculate the metrics displayed on this page. Results for these sites are expected to be available again between mid-May and June 2022.

Data not shown

- Data from sewersheds that serve fewer than 3,000 people.
- Data from sewersheds where population estimates are missing.
- Data from facility or institution-specific sampling locations.
- Wastewater treatment plant names and the names of upstream sampling sites are made anonymous using a color-coded arbitrary number.
- Approximately 20% of US households are on septic systems; the exact percent varies by location. These systems do not connect to wastewater treatment plants where sampling often occurs. Therefore, households on septic systems are not included in the data.
- Data from sewersheds currently being monitored but not submitted by health departments to CDC. Certain commercial entities collect wastewater samples but do not submit their data to CDC.
- Data from sewersheds may not be presented if there are data quality issues.

Data source

- Data displayed are derived from two sources:
- Data are submitted to CDC by state, tribal, local, and territorial (STLT) health departments participating in the National Wastewater Surveillance System. Participation is voluntary, so not all jurisdictions are reporting to CDC.
- Data are reported through a CDC-managed contract for commercial testing, which is intended to supplement the coverage of the STLT wastewater surveillance programs.

Laboratory methods

- SARS-CoV-2 concentrations in wastewater are measured using reverse transcription quantitative polymerase chain reaction (RT-qPCR) or reverse transcription digital polymerase chain reaction (RT-dPCR). Laboratory processing and quantification may vary between sampling sites or, less commonly, within a sampling site over time. Since SARS-CoV-2 concentrations may differ across these lab methods, concentration values should not be compared across sampling locations. If change in SARS-CoV-2 concentrations and current levels compared to past levels at the same site are provided, they are more comparable across lab methods. When testing a sample, SARS-CoV-2 is considered detected when any of the sample were positive. Positive is defined for RT-qPCR as a Ct value less than 40 and for RT-ddPCR as 3 or more droplets/partitions. Learn more on the [Wastewater Surveillance Testing Methods](#) page.

Data download

- These data can be downloaded from data.cdc.gov: [NWSS Public SARS-CoV-2 Wastewater Metric Data](#) and [NWSS Final Concentration in Wastewater Data](#)
- The data dictionary for these data (Public Analytics Data Dictionary) is also available.
- To request detailed wastewater data, including a full-time history of raw concentrations, email nwss@cdc.gov with the line 'NWSS public data request.' You will be required to sign a data use agreement.

Wondering what all the data mean?

CDC's [COVID-Data Tracker Weekly Review](#) helps you stay up to date on interpretation of key data and trends.

How does wastewater surveillance work?

Wastewater data can show changes in disease trends 4 to 6 days before those changes in trends are seen in clinics and a single wastewater sample captures the infection status of thousands to millions of individuals. Learn more: [Wastewater Surveillance System \(NWSS\)](#).

If it looks like virus levels in wastewater are rising in my community, what should I do?

Check your county's [COVID-19 Community Level](#) and follow the recommended prevention steps.

Public health officials watch for sustained increasing levels of the virus in wastewater and use these data to inform health decisions. State and local health officials track a variety of data and put this information together to understand the local COVID-19 situation and decide how to best respond.

How do I build NWSS in my community?

Wastewater-based disease surveillance is an exciting new tool to help communities monitor their health. Find [info what to consider](#) when implementing a wastewater-based disease surveillance system.

Is there wastewater sampling in my community?

New sampling sites are being added over time as health departments begin sampling and reporting wastewater surveillance data. Some communities not represented on this dashboard may be conducting wastewater surveillance. If you want to know if wastewater surveillance is happening in your community, contact your [health department](#) or local government. However, CDC does not release the names of the wastewater treatment plants or zip codes where sampling sites are located. However, information on the counties served by the wastewater sampling sites is provided.

Cite COVID Data Tracker

Centers for Disease Control and Prevention. COVID Data Tracker. Atlanta, GA: US Department of Health and Human Services, CDC; 2023, February 23. <https://covid.cdc.gov/covid-data-tracker>

[COVID-19 Home >](#)

All COVID-19 topics including prevention, travel, work, and school

HAVE QUESTIONS?



Visit CDC-INFO



Call 800-232-4636



Email CDC-INFO



Open 24/7

CDC INFORMATION

[About CDC](#)

[Jobs](#)

[Funding](#)

[Policies](#)

[File Viewers & Players](#)

[Privacy](#)

[FOIA](#)

[No Fear Act](#)

[OIG](#)

[Nondiscrimination](#)

[Accessibility](#)

CONNECT WITH CDC



[U.S. Department of Health & Human Services](#)

[USA.gov](#)

[CDC Website Exit Disclaimer](#)