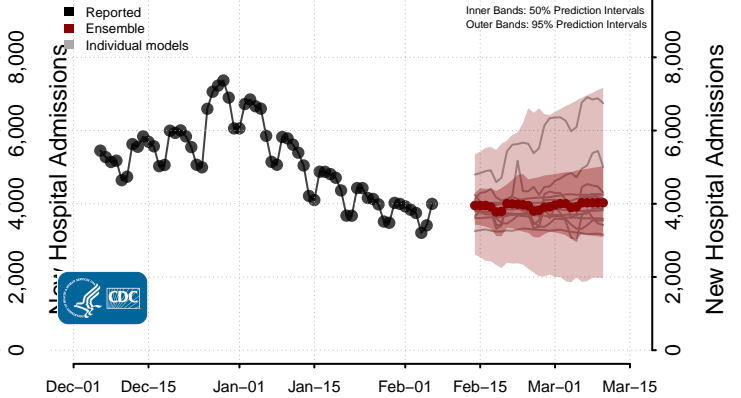
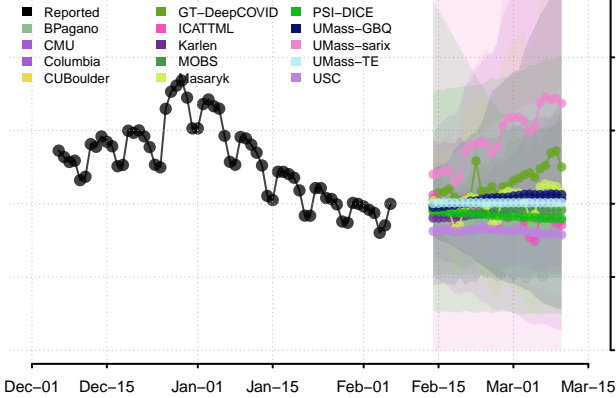
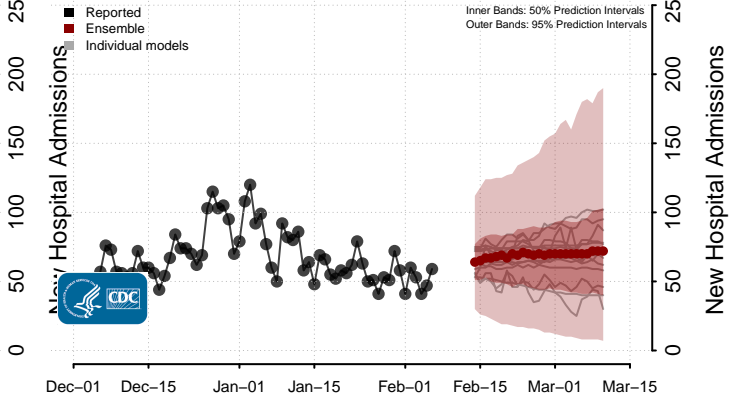
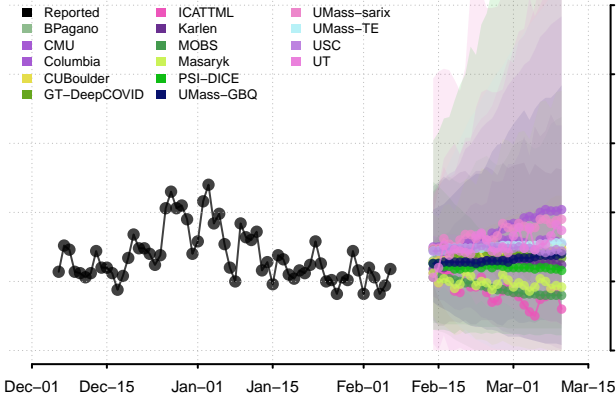


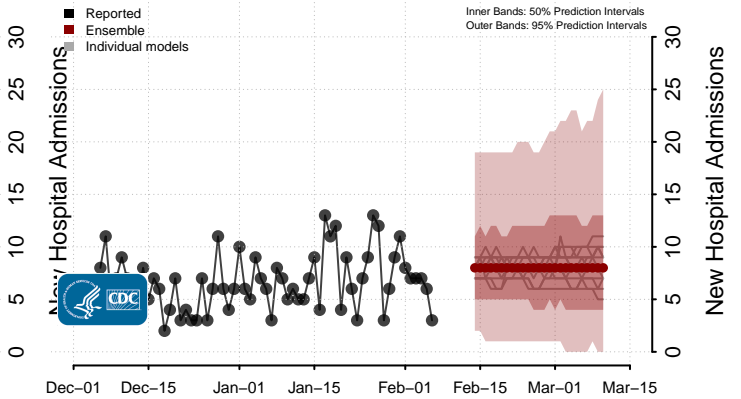
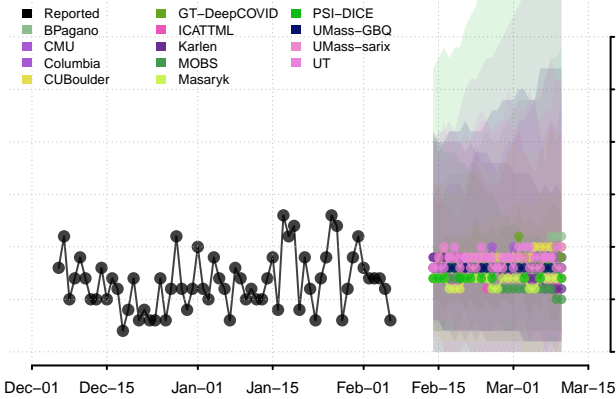
National



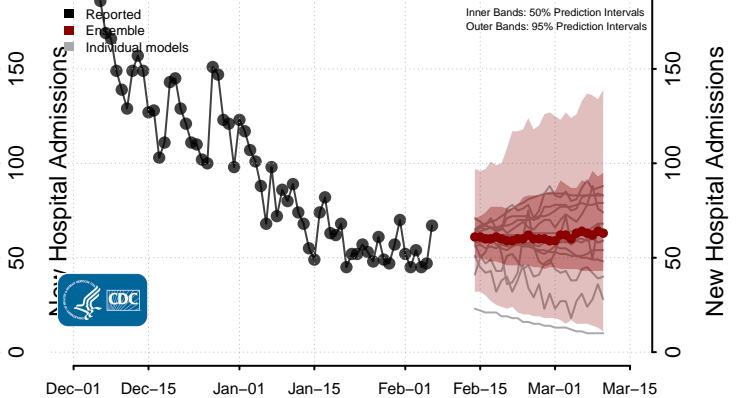
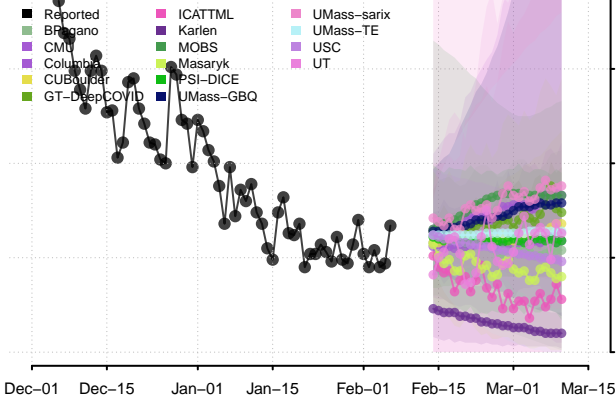
Alabama



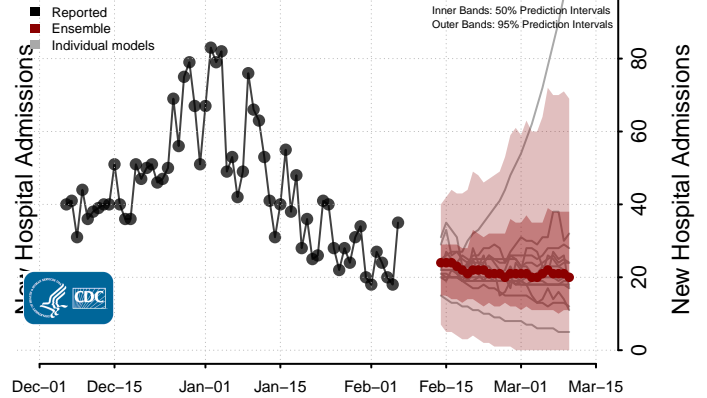
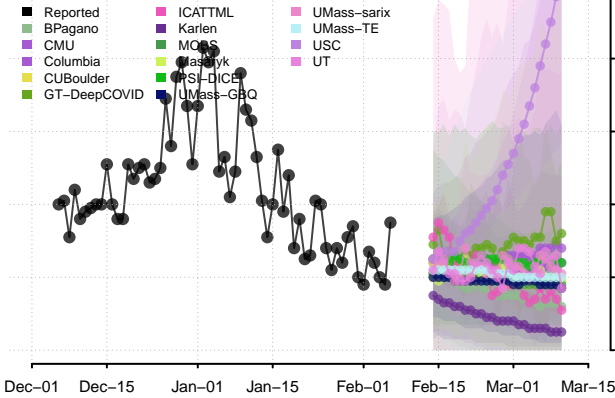
Alaska



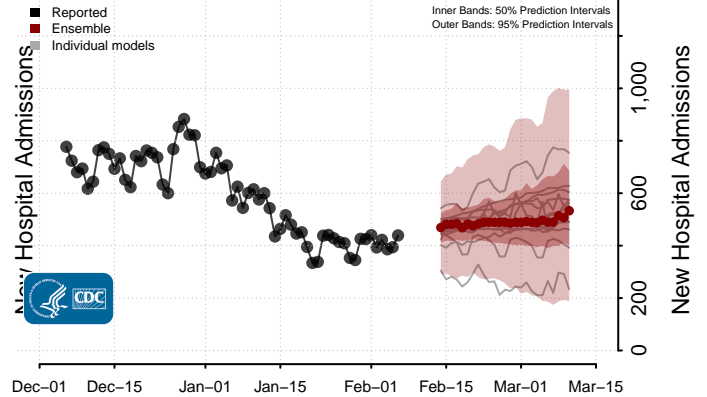
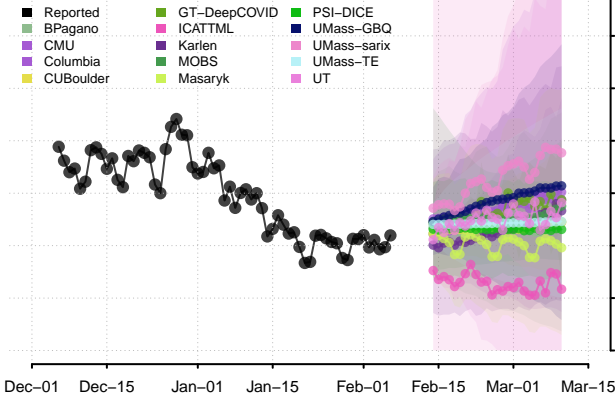
Arizona



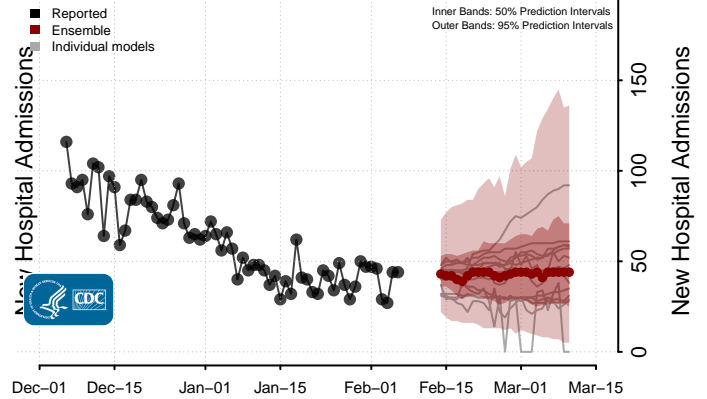
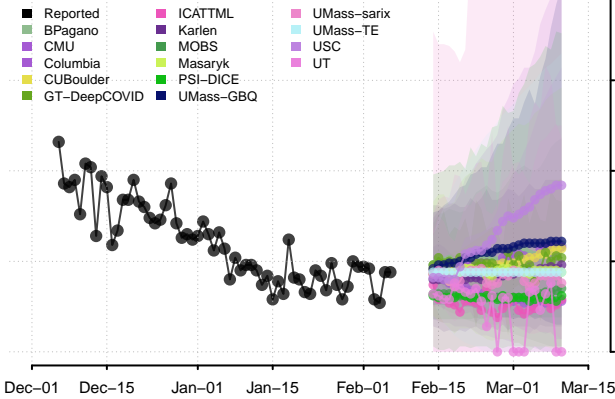
Arkansas



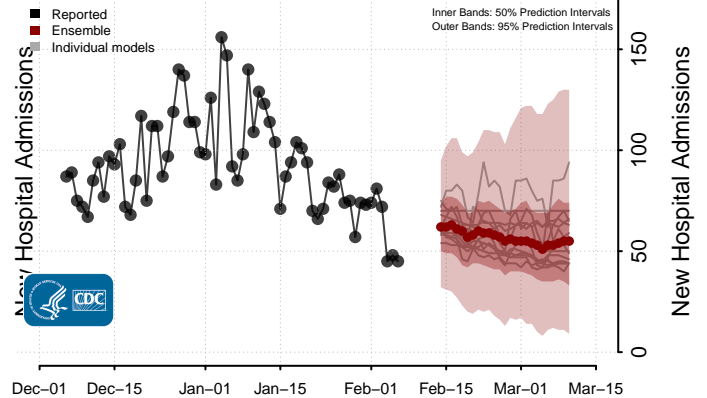
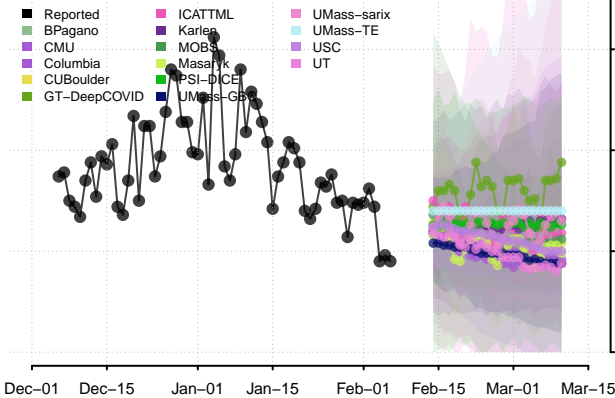
California



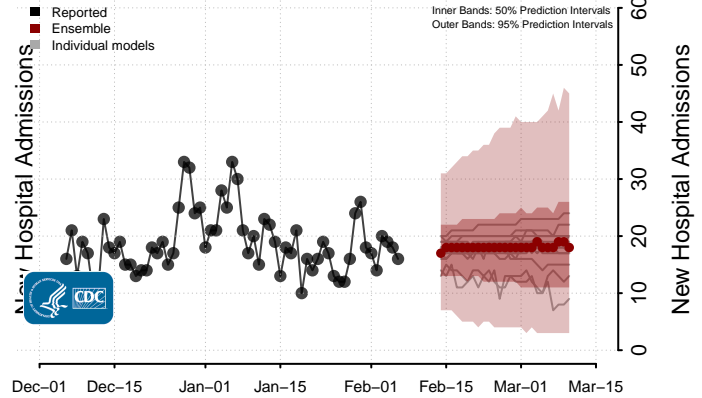
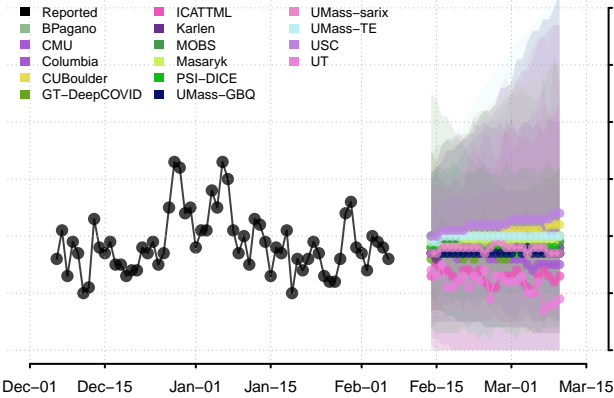
Colorado



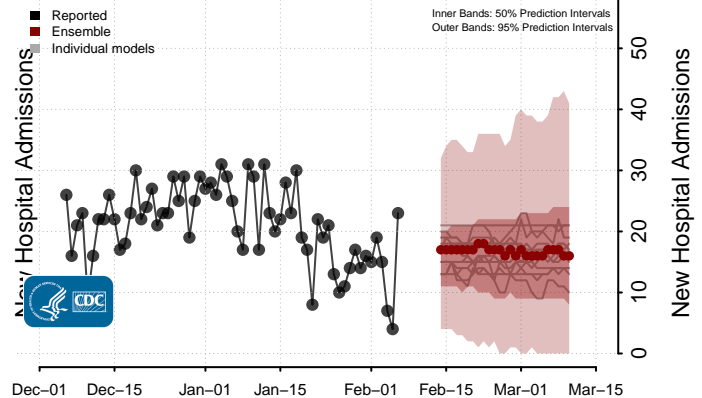
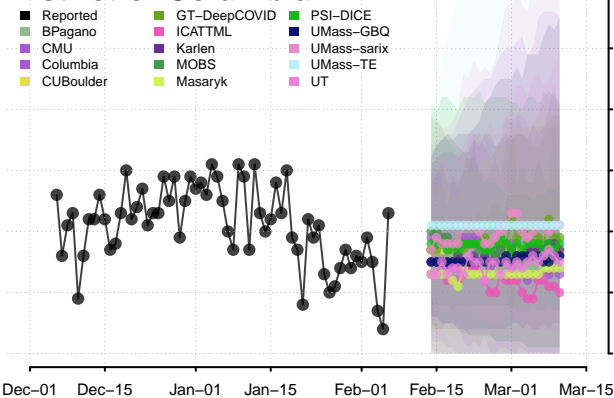
Connecticut



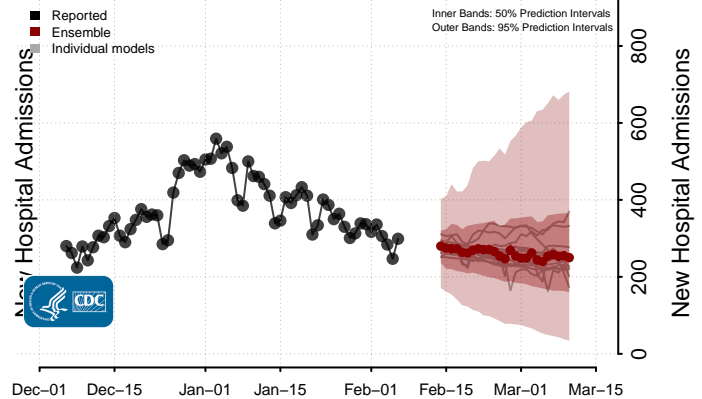
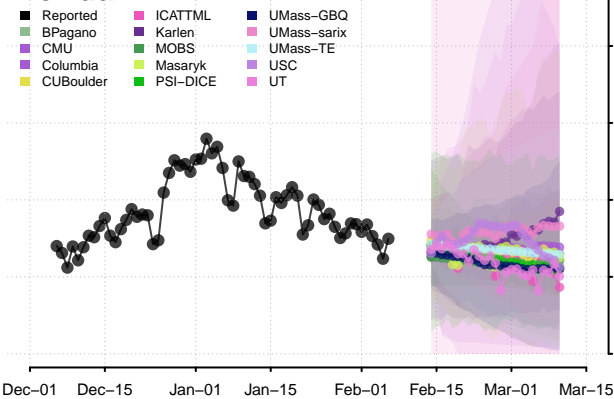
Delaware



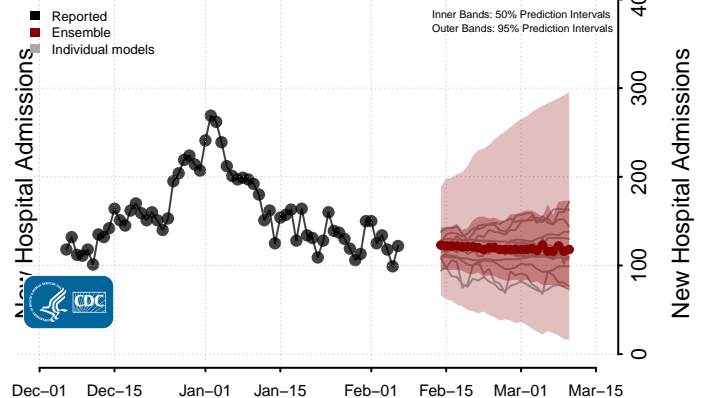
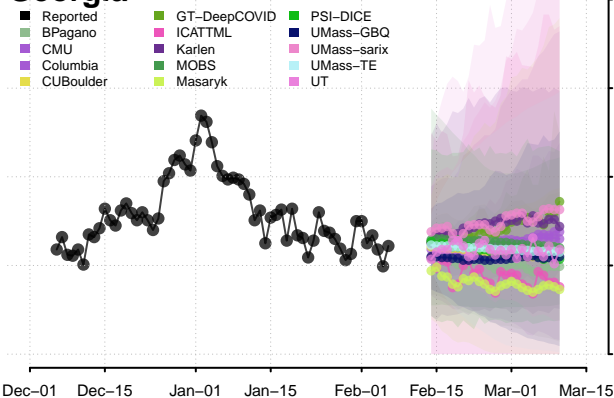
District of Columbia



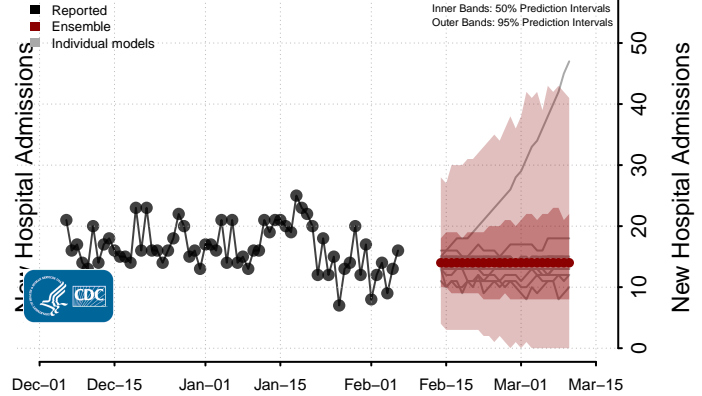
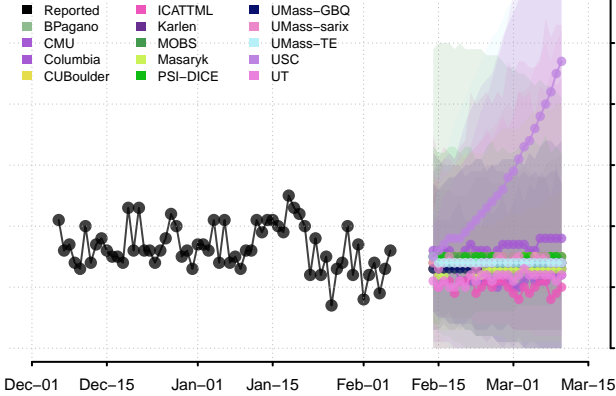
Florida



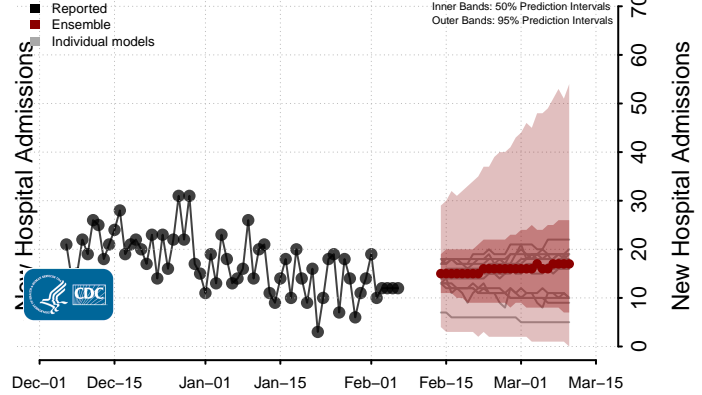
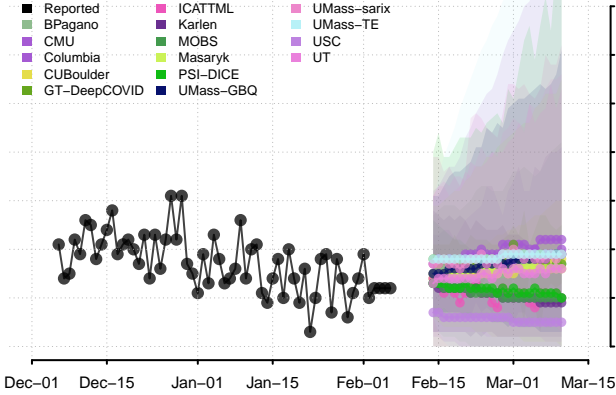
Georgia



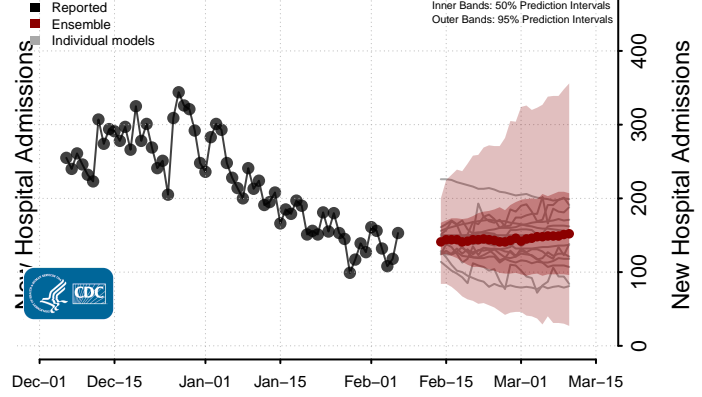
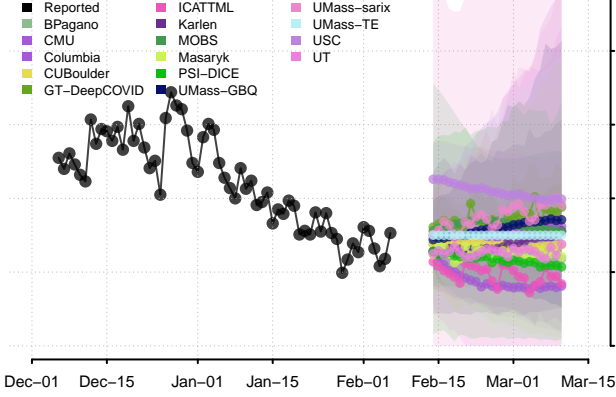
Hawaii



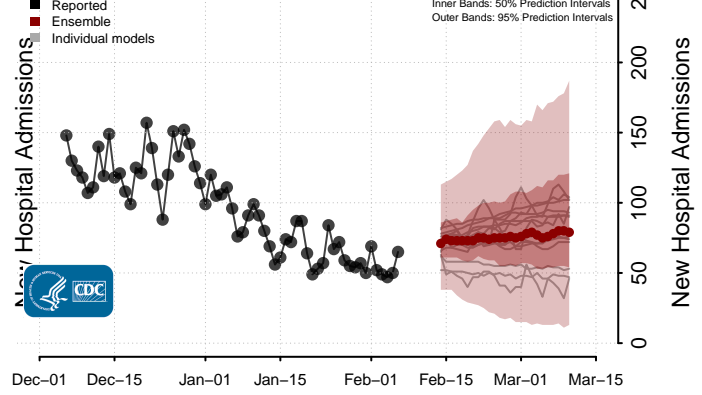
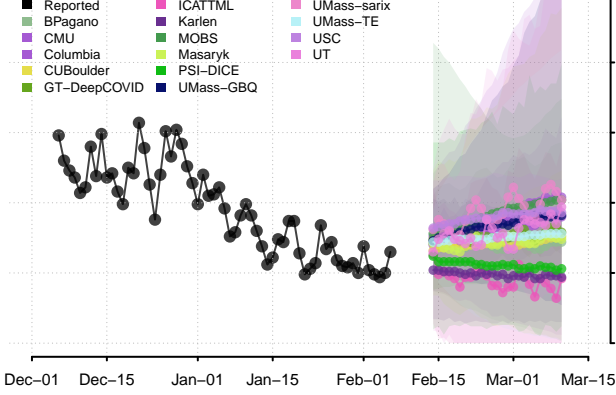
Idaho



Illinois

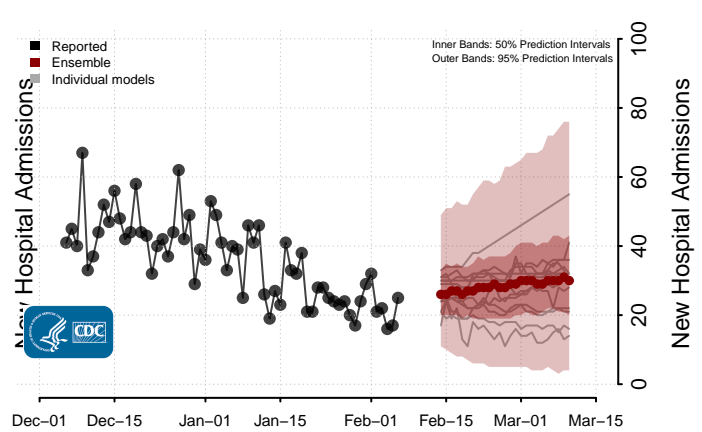
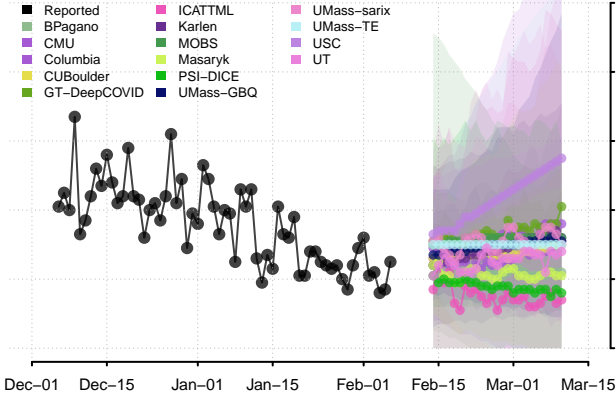


Indiana**

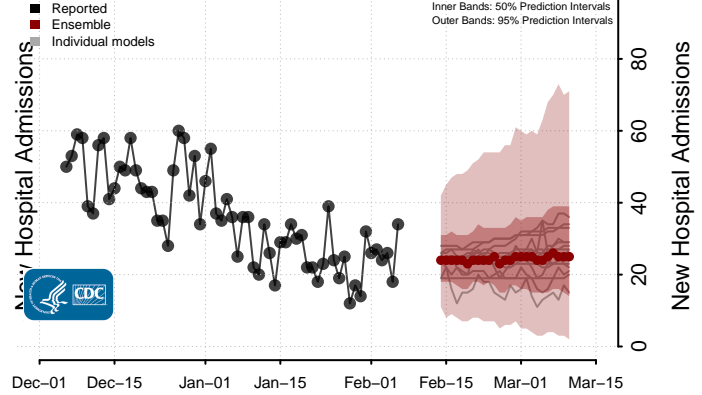
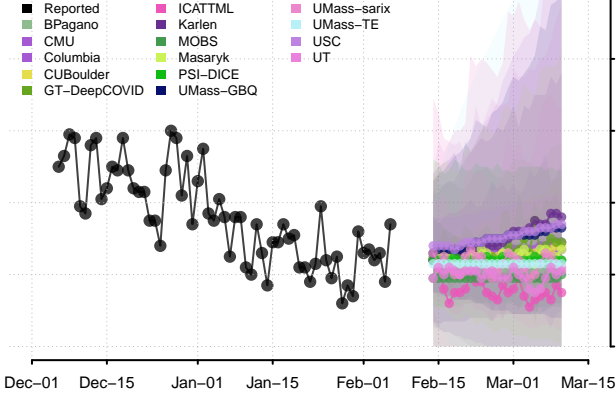


**New daily confirmed COVID-19 hospital admissions may increase in this location over the next four weeks. For these locations, the ensemble forecast indicates a median daily probability of 0.75 or greater that more hospital admissions will be reported in the last seven days of the forecast than the median in the last seven days of reported data.

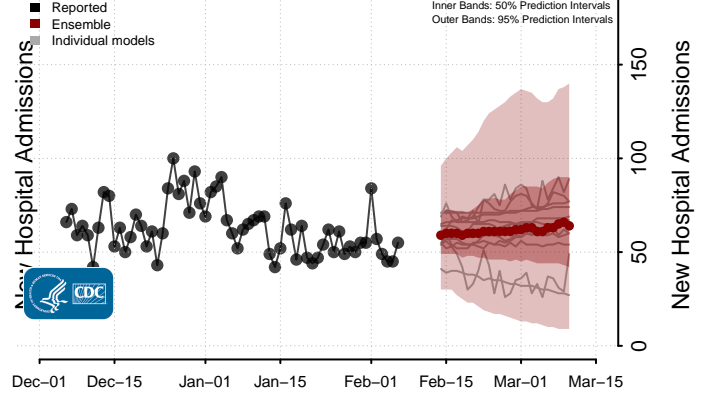
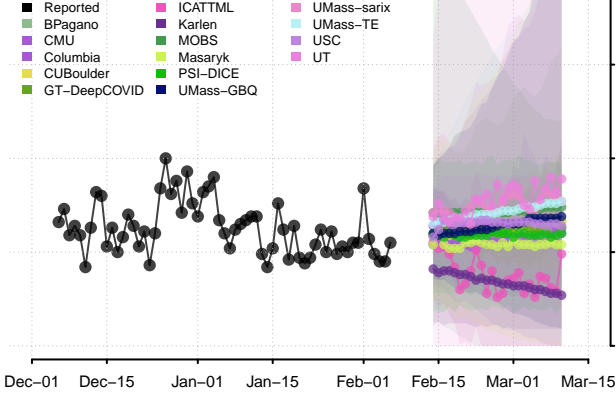
Iowa



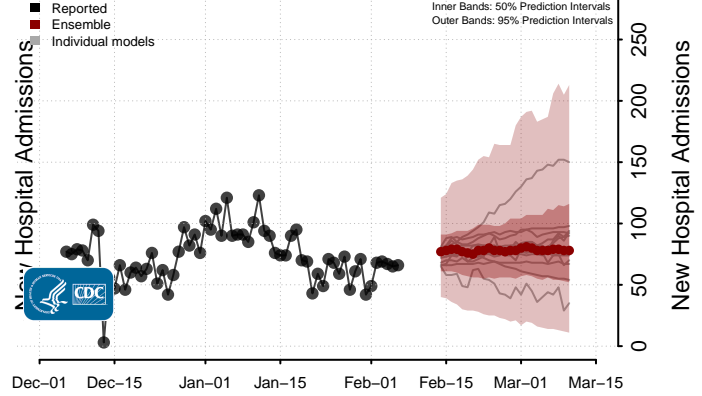
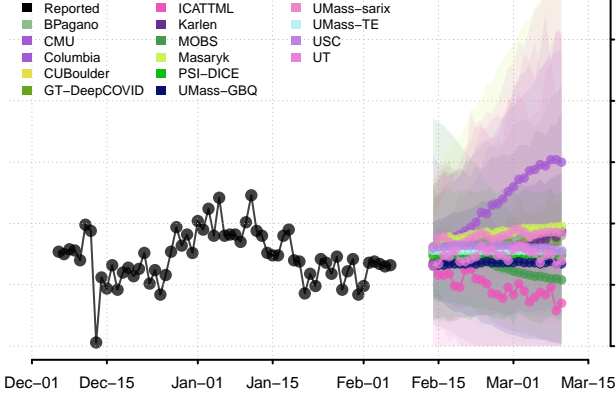
Kansas



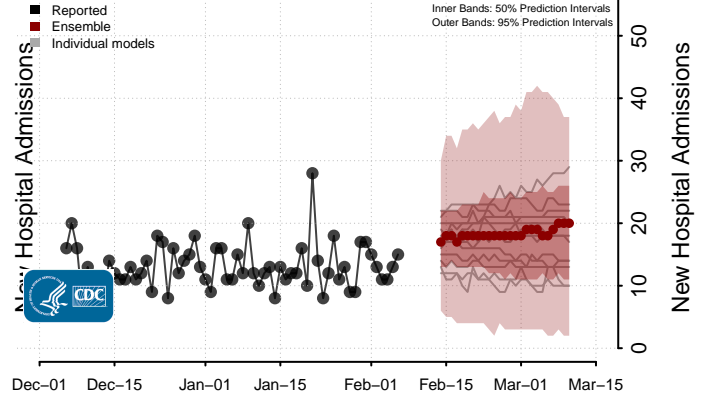
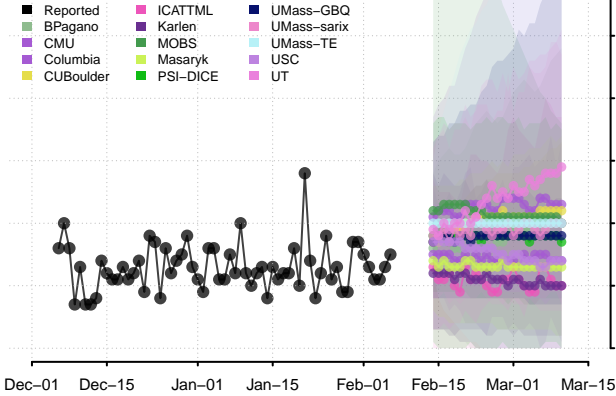
Kentucky



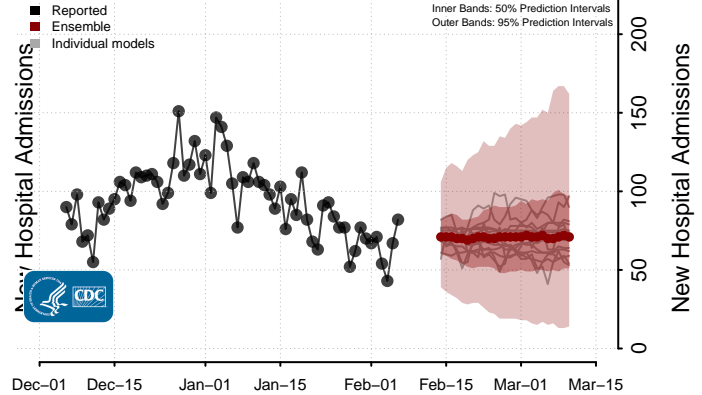
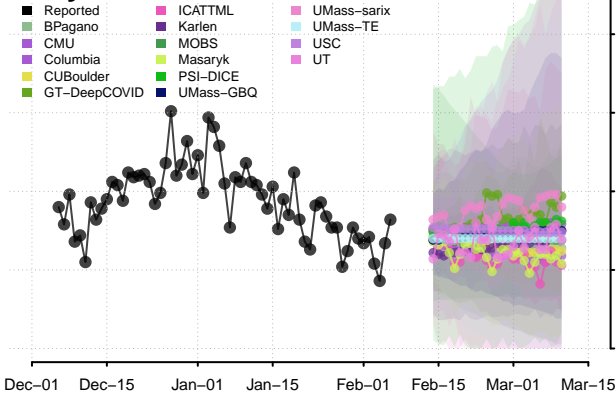
Louisiana



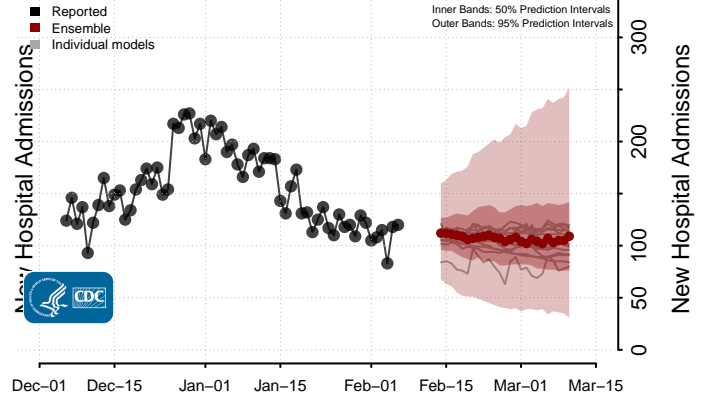
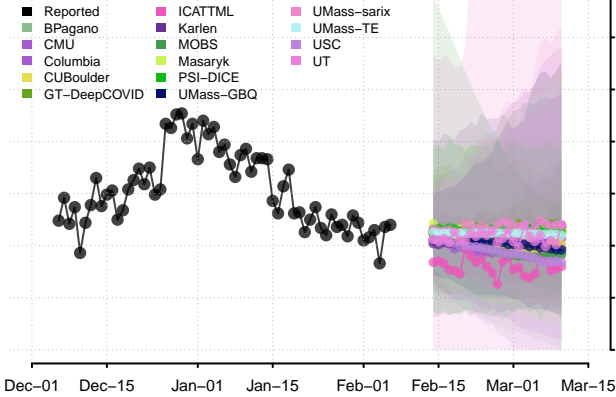
Maine



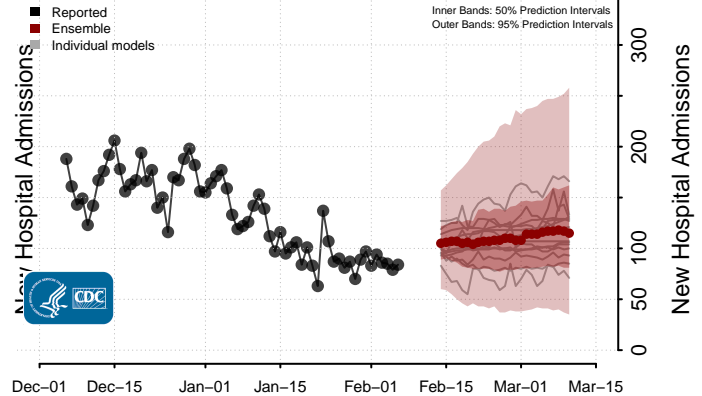
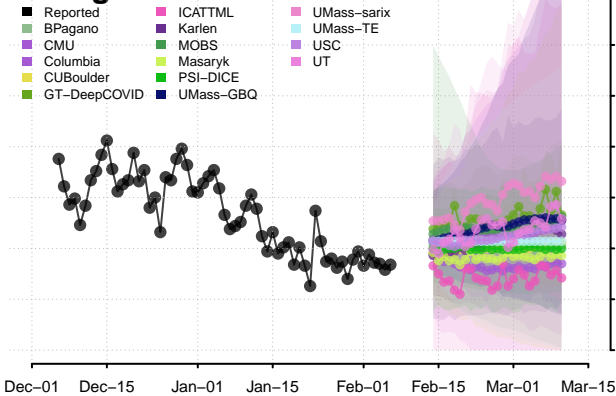
Maryland



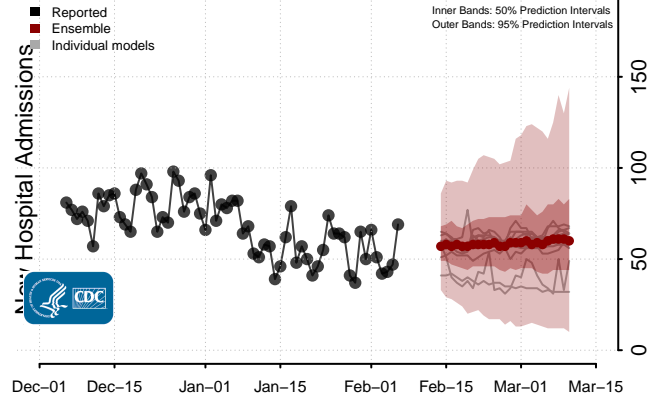
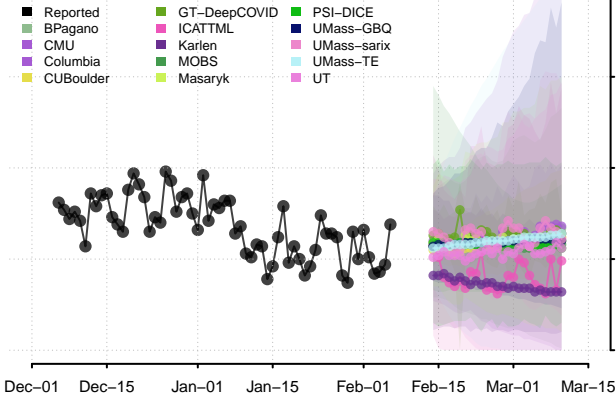
Massachusetts



Michigan

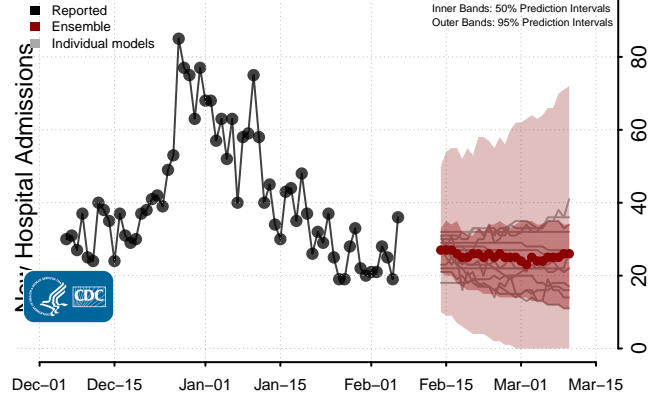
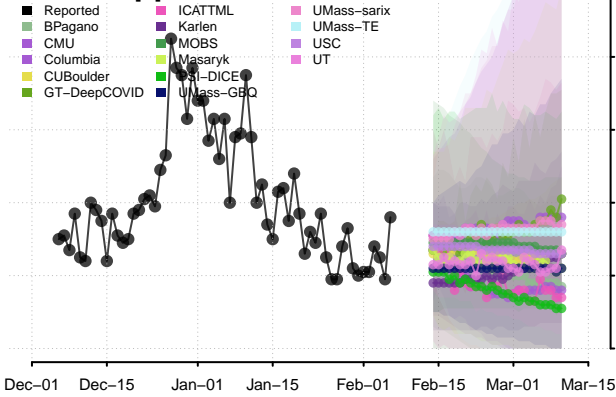


Minnesota



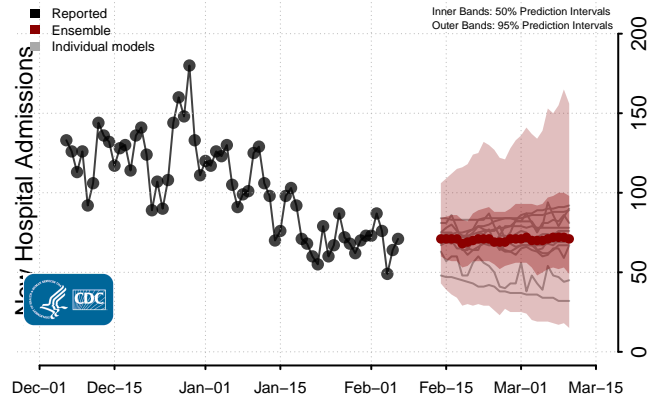
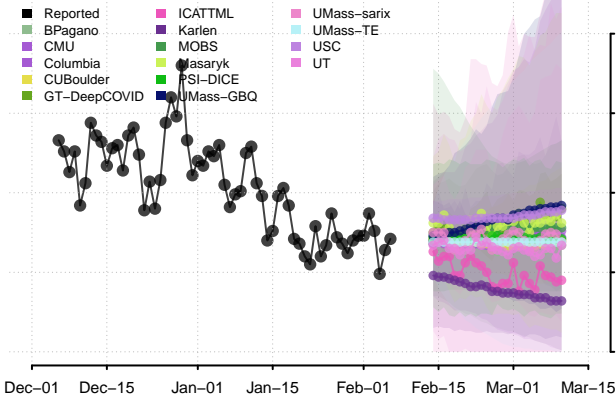
New Hospital Admissions

Mississippi



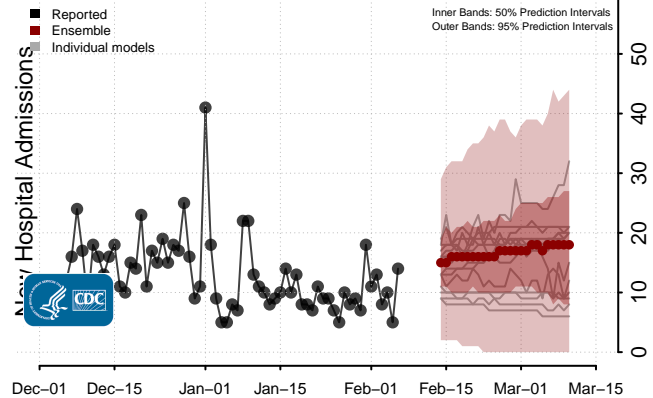
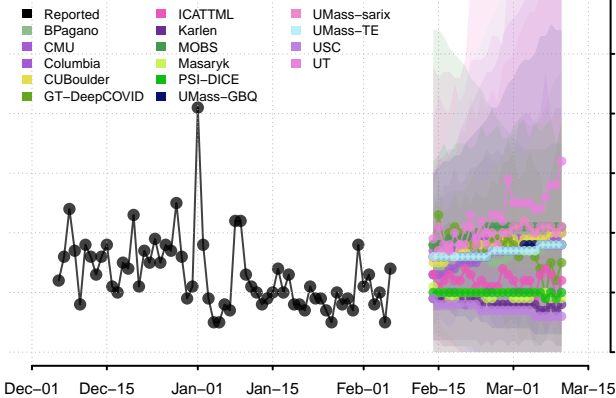
New Hospital Admissions

Missouri



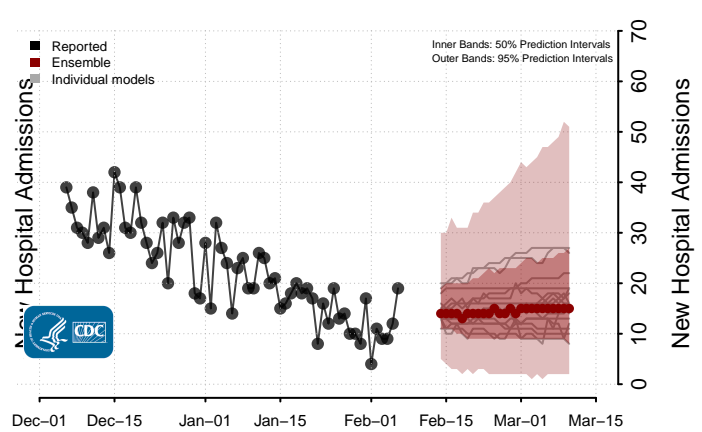
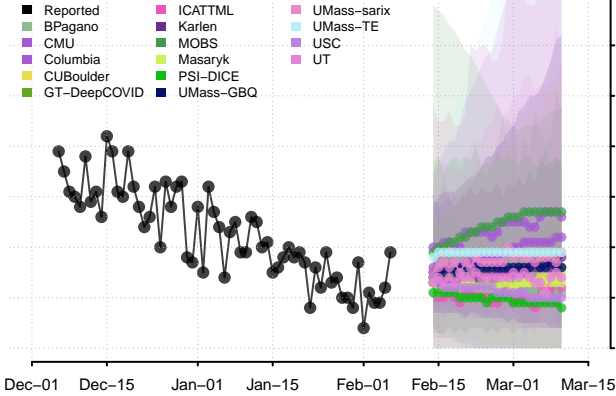
New Hospital Admissions

Montana

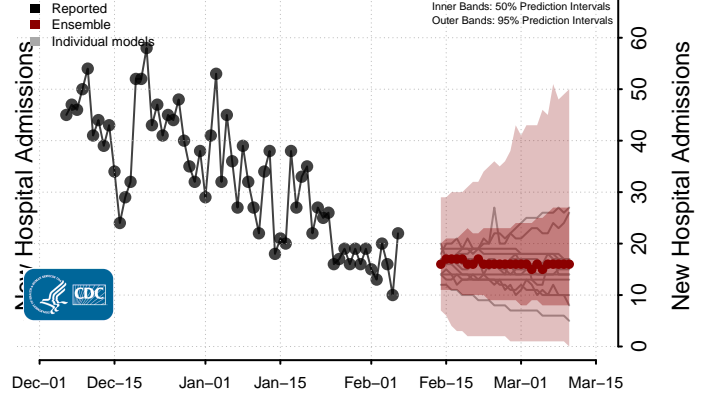
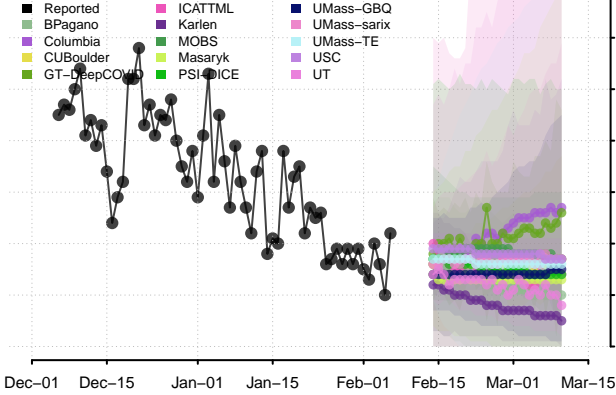


New Hospital Admissions

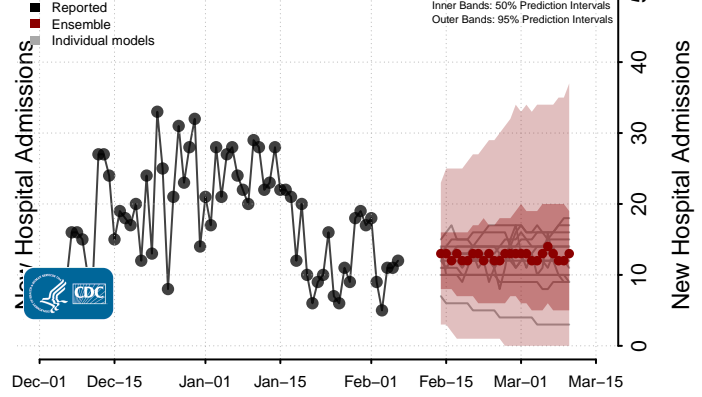
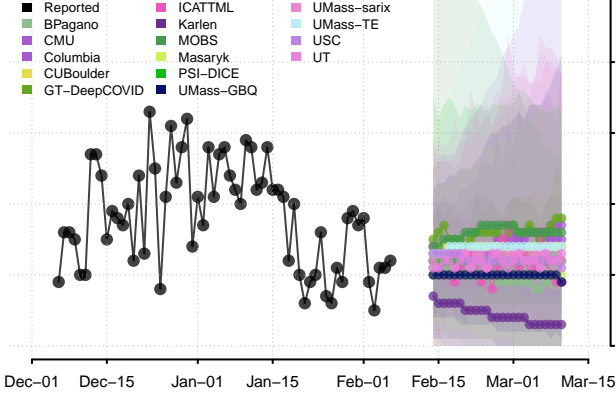
Nebraska



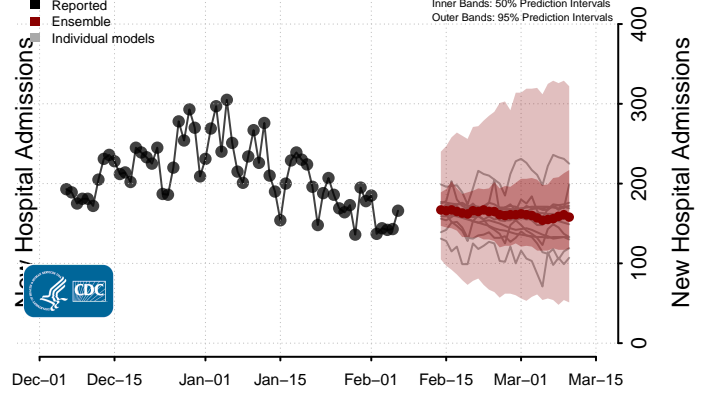
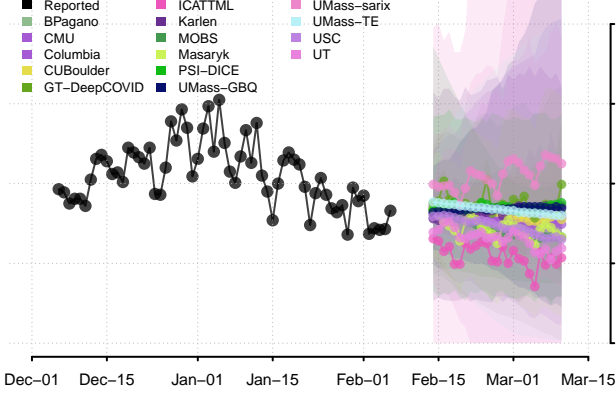
Nevada



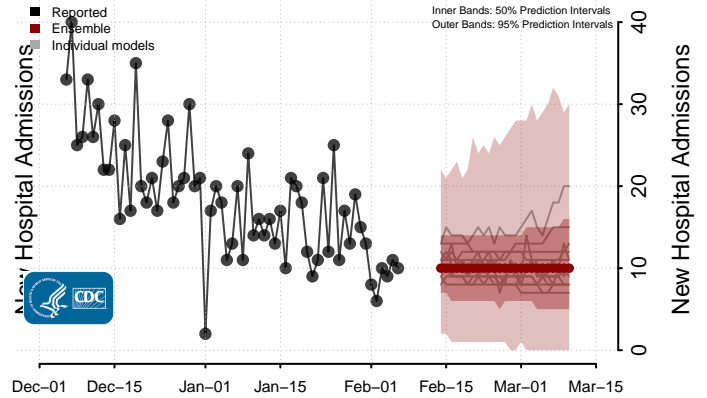
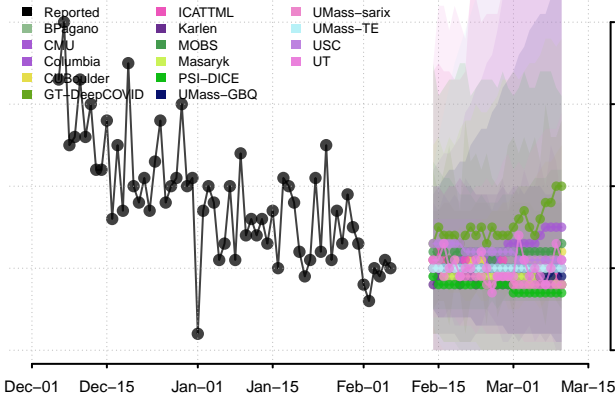
New Hampshire



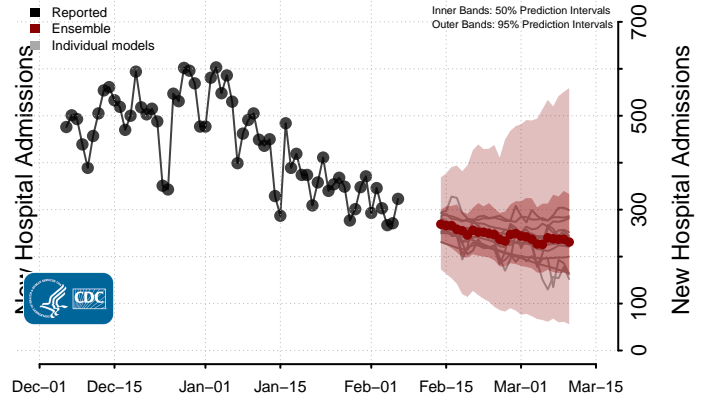
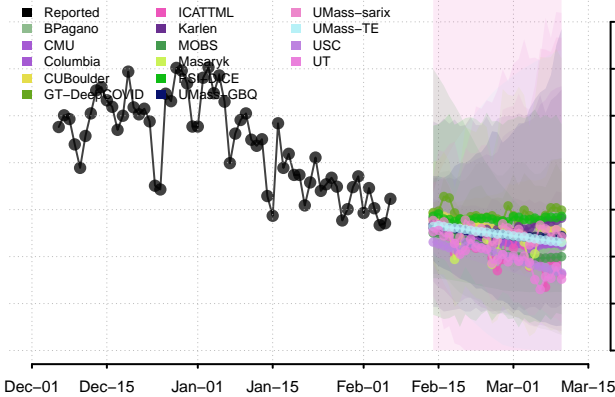
New Jersey



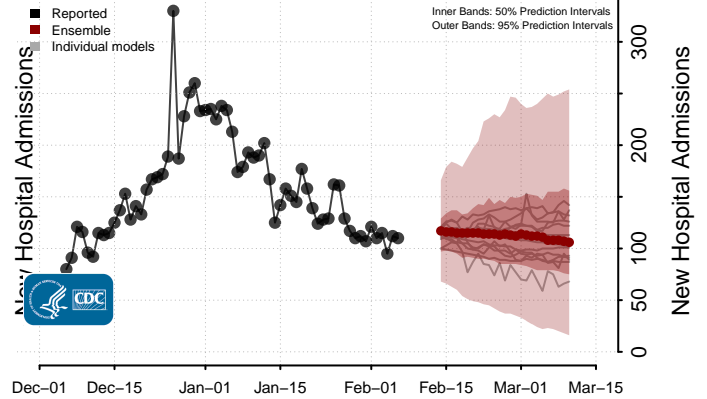
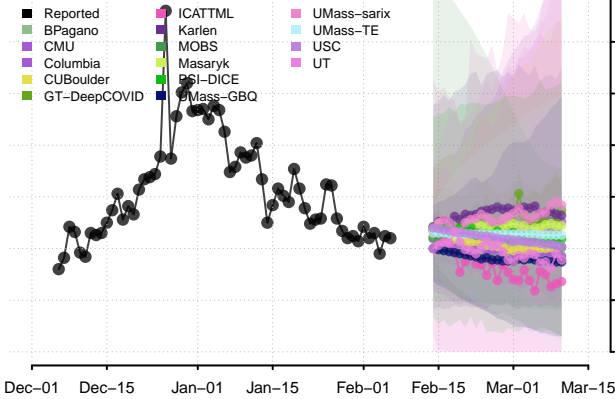
New Mexico



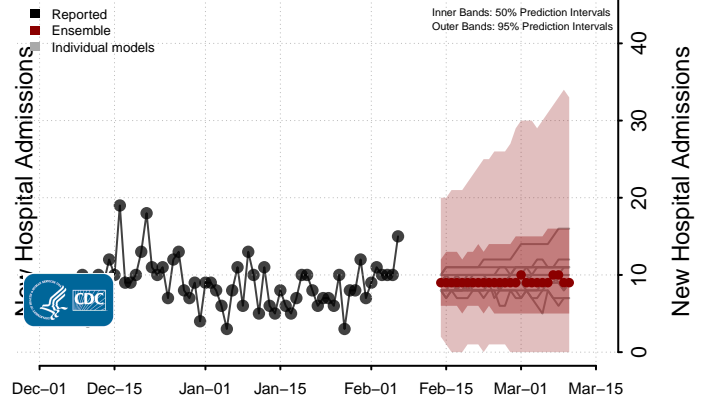
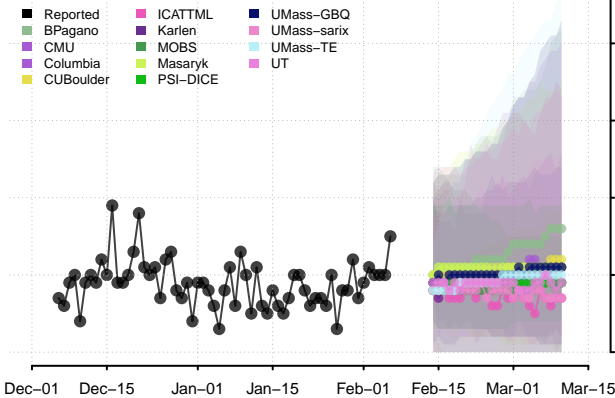
New York



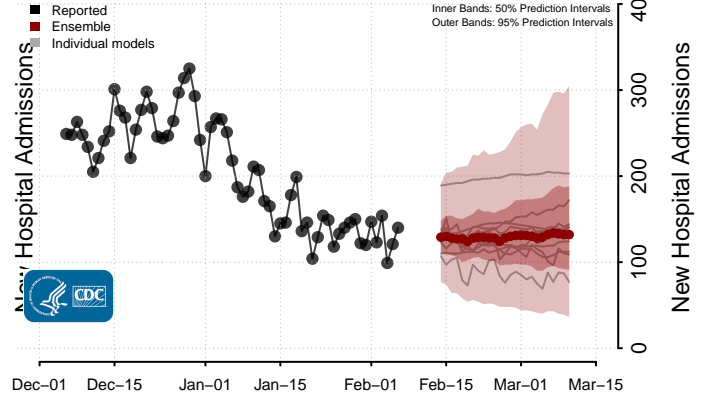
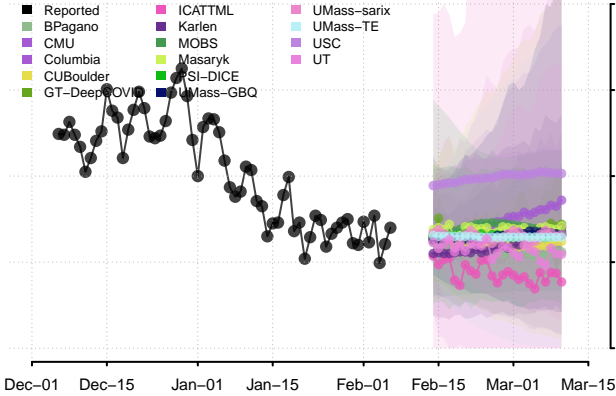
North Carolina



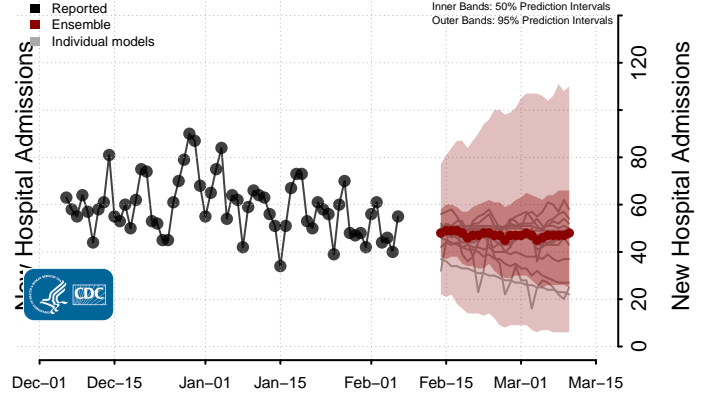
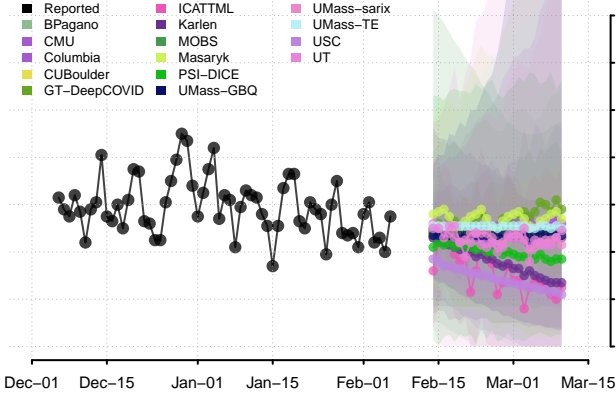
North Dakota



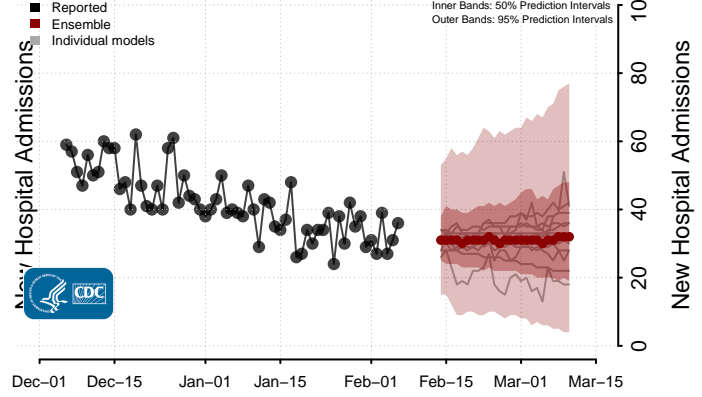
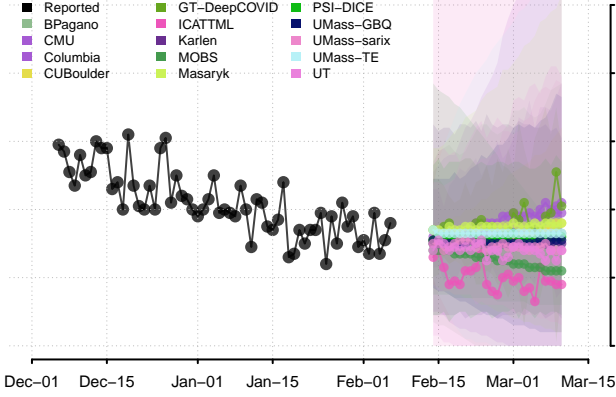
Ohio



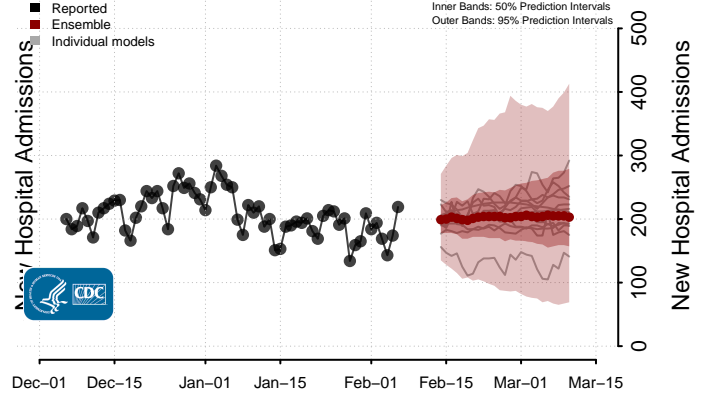
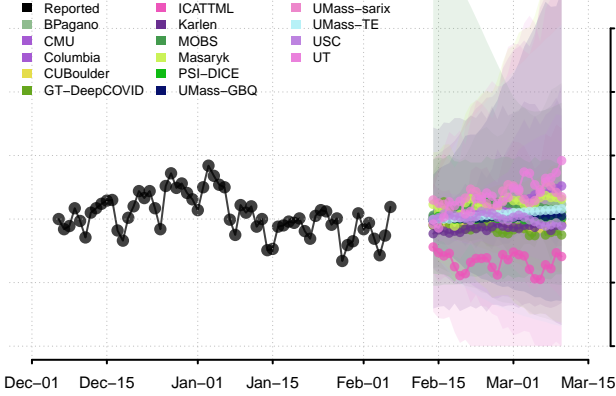
Oklahoma



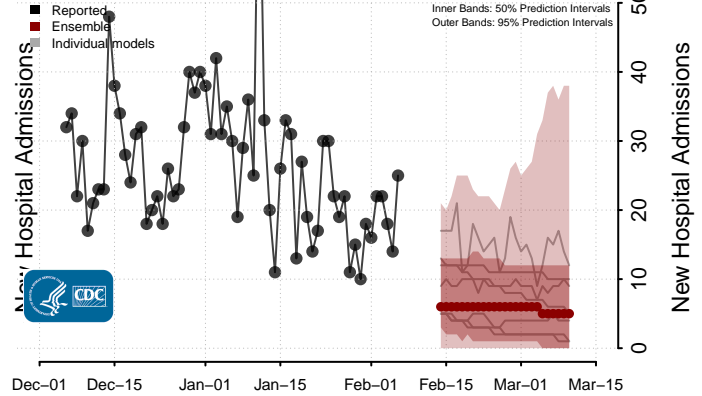
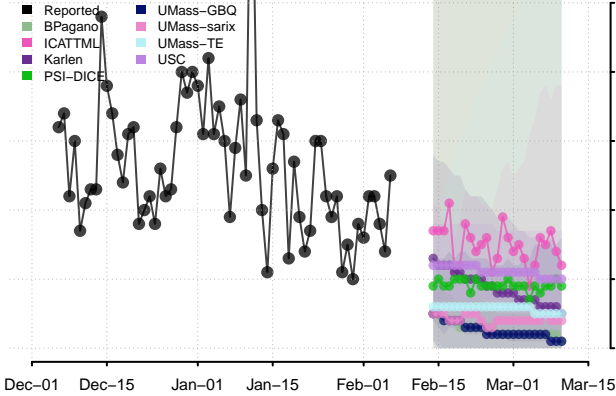
Oregon



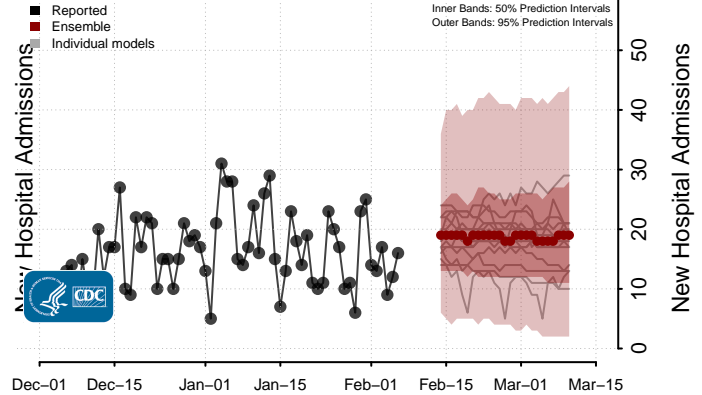
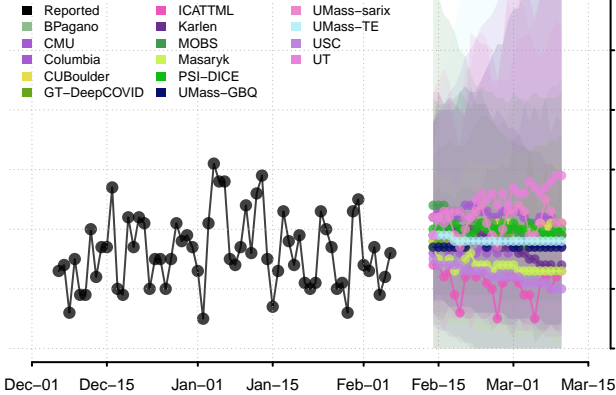
Pennsylvania



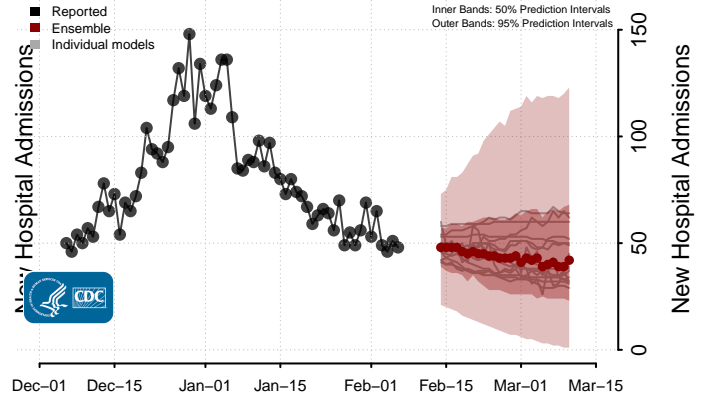
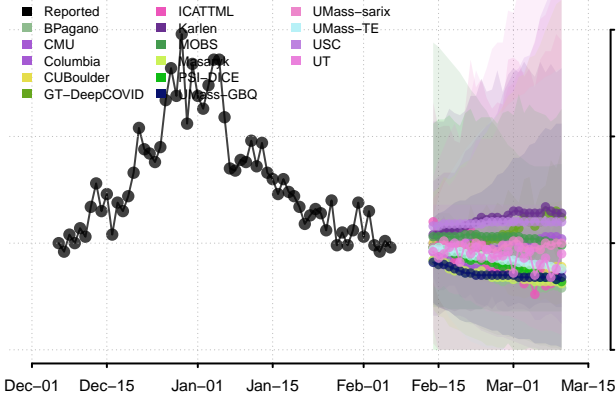
Puerto Rico



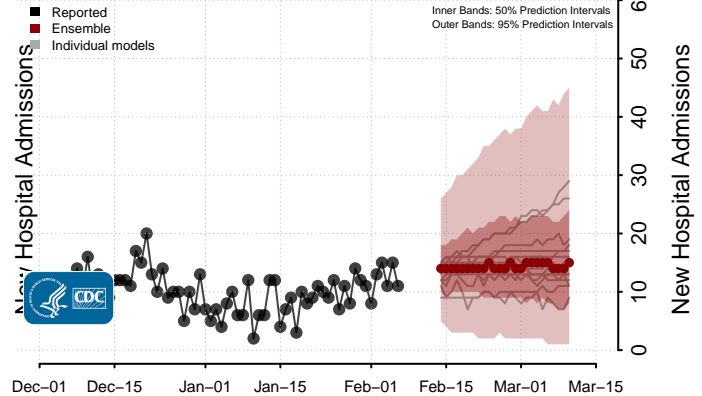
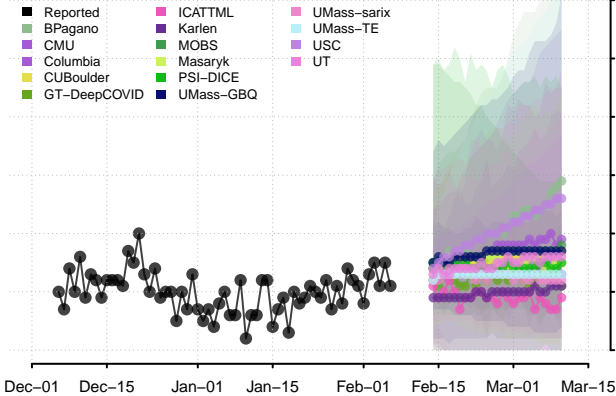
Rhode Island



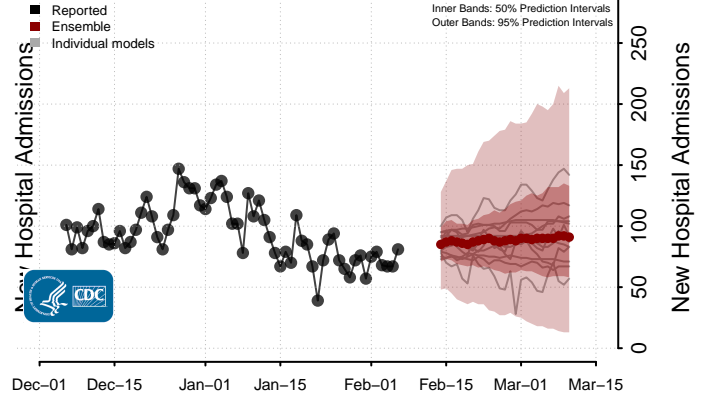
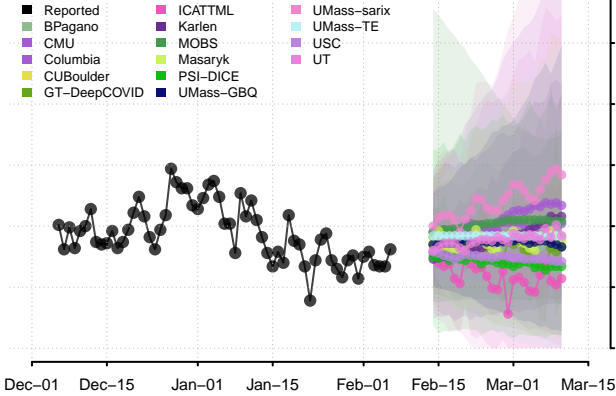
South Carolina



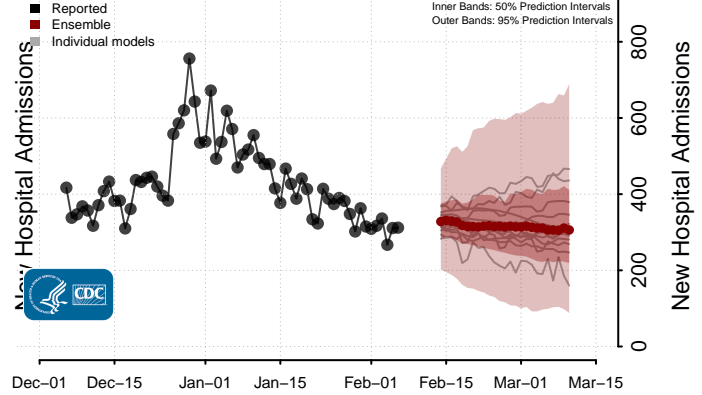
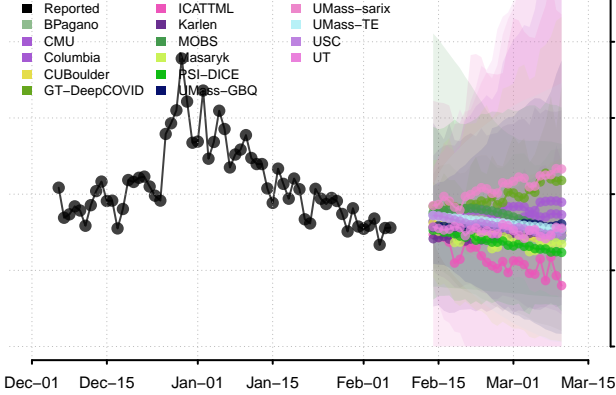
South Dakota



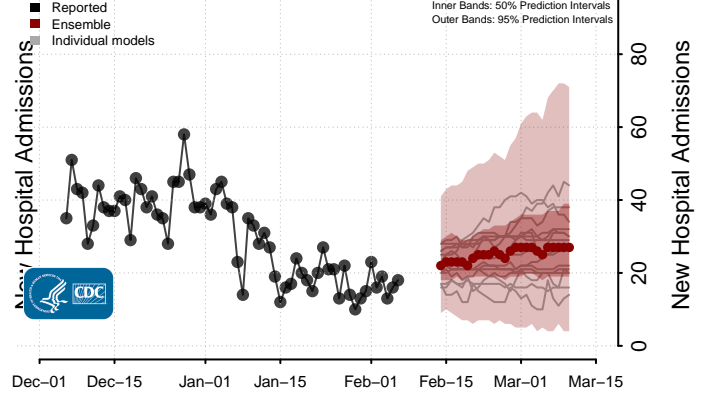
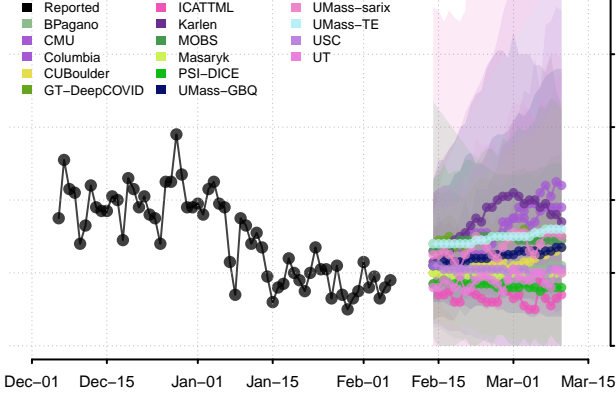
Tennessee



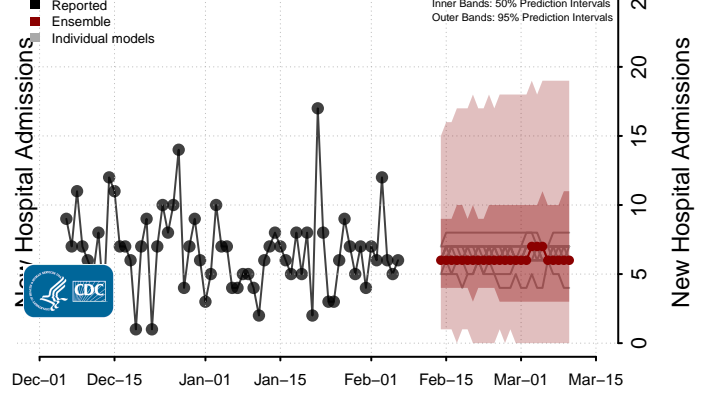
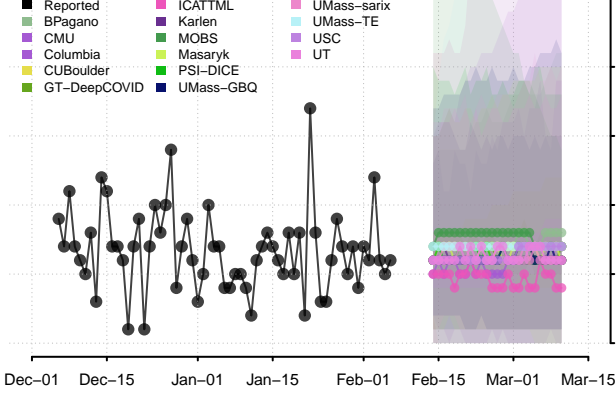
Texas



Utah**

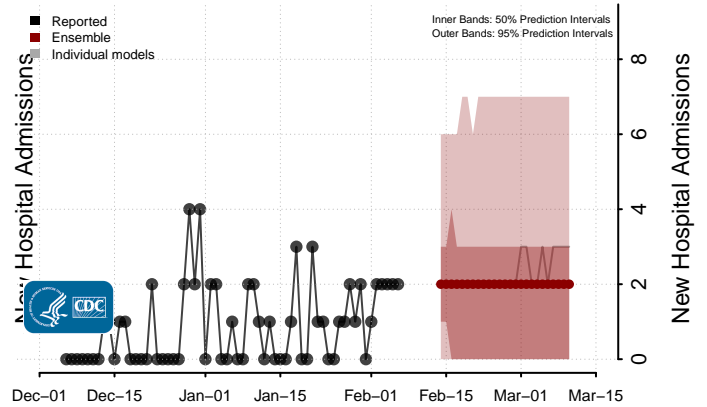
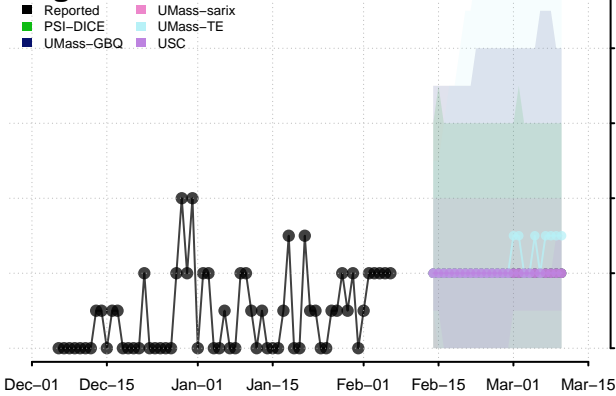


Vermont

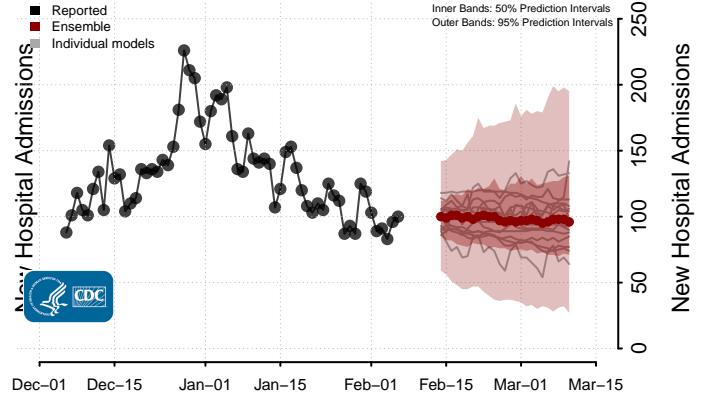
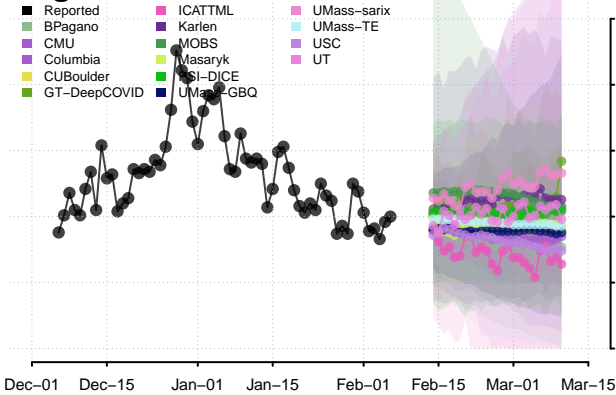


**New daily confirmed COVID-19 hospital admissions may increase in this location over the next four weeks. For these locations, the ensemble forecast indicates a median daily probability of 0.75 or greater that more hospital admissions will be reported in the last seven days of the forecast than the median in the last seven days of reported data.

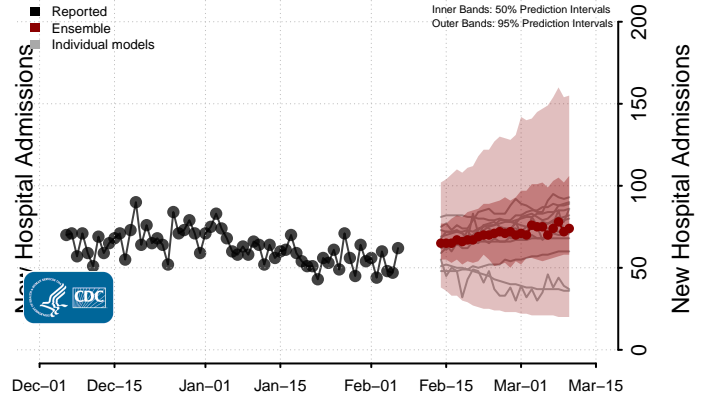
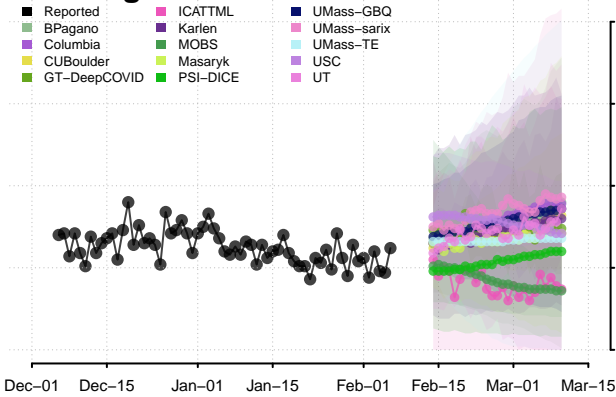
Virgin Islands



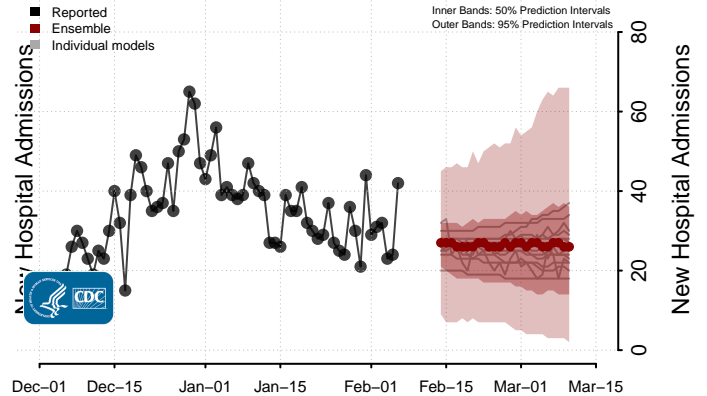
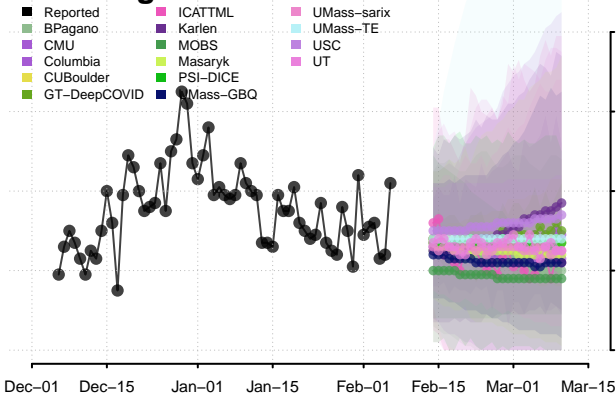
Virginia



Washington**

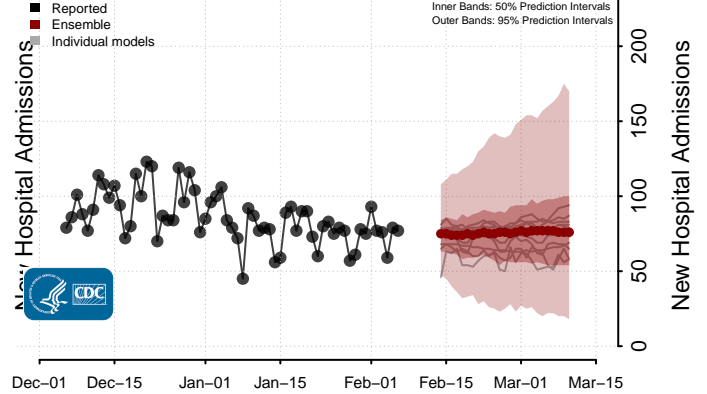
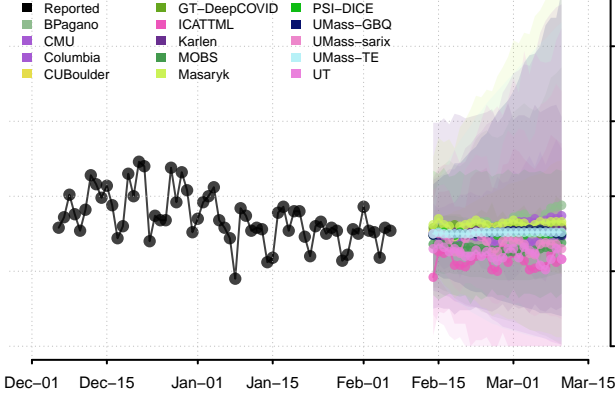


West Virginia

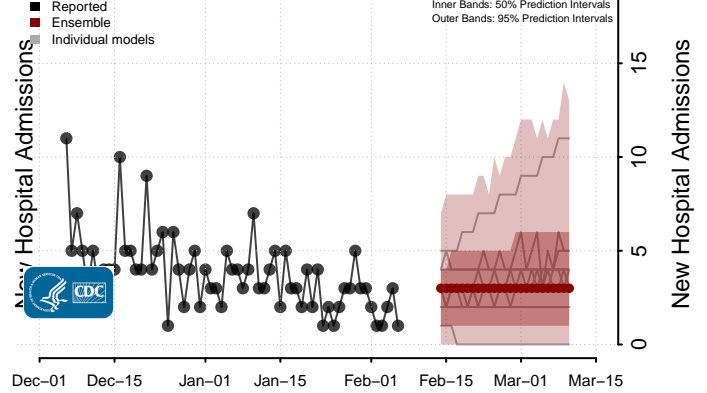
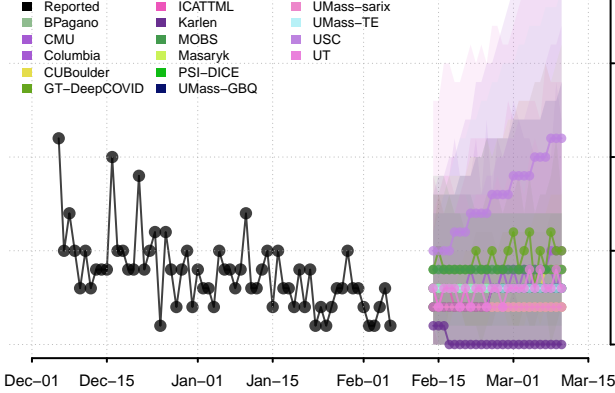


**New daily confirmed COVID-19 hospital admissions may increase in this location over the next four weeks. For these locations, the ensemble forecast indicates a median daily probability of 0.75 or greater that more hospital admissions will be reported in the last seven days of the forecast than the median in the last seven days of reported data.

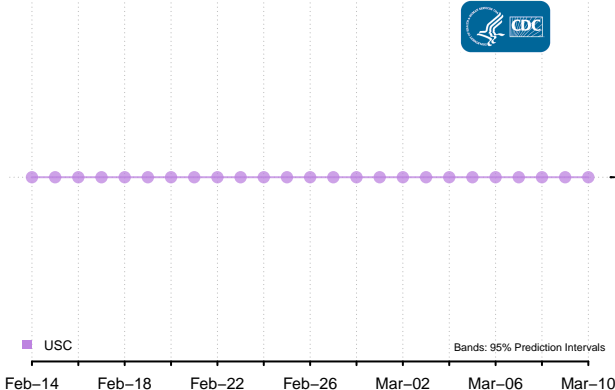
Wisconsin



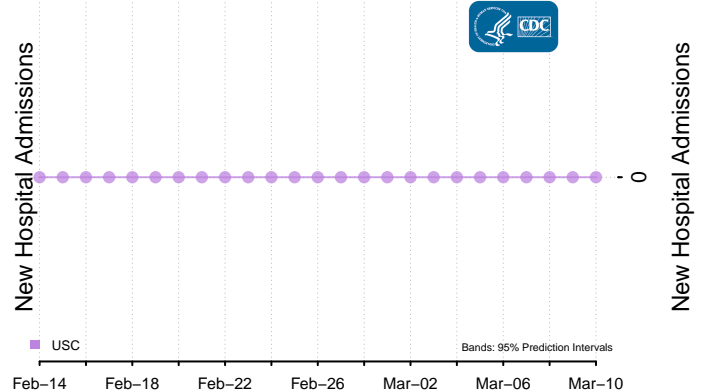
Wyoming



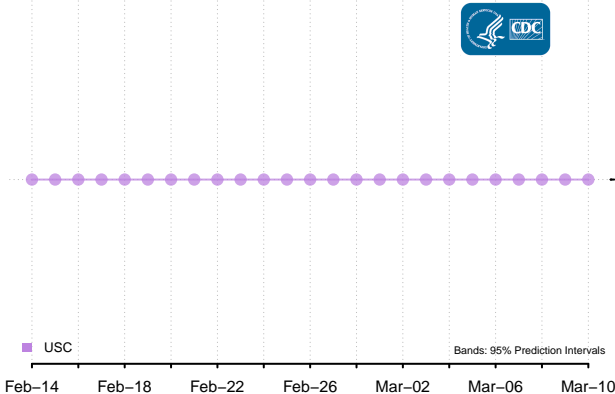
American Samoa***



Guam***



Northern Mariana Islands***



Northern Mariana Islands***

