

COVID Data Tracker

Maps, charts, and data provided by CDC, updates Mon-Fri by 8 pm ET

[COVID-19 Home >](#)



CDC recommends use of [COVID-19 Community Levels](#) to determine the impact of COVID-19 on communities and to take [action](#). CDC also provides [Transmission Levels](#) (also known as Community Transmission) to describe the amount of COVID-19 spread within each county. Healthcare facilities use Transmission Levels to determine [infection control](#) interventions.

United States at a Glance

Collapse

United States
At a Glance

Cases Total 102,736,819

Case Trends

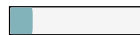
Deaths Total 1,110,364

Death Trends

Current Hosp. 19,416

Admission Trends

15.8% of People with Updated Booster Dose



Data Tracker Home

Cases, Deaths, & Testing

Case & Death Demographic Trends

Vaccination Distribution & Coverage

Vaccine Effectiveness & Breakthrough Surveillance

Health Equity

Pediatric

Pregnancy

People at Increased Risk

Wastewater Surveillance

COVID-19: Wastewater Surveillance

Communities can track the presence of SARS-CoV-2, the virus that causes COVID-19, in wastewater samples. These data can provide an early warning of COVID-19's spread in communities. For more information, visit the [Wastewater Surveillance System page](#).

Monitoring Wastewater Surveillance Data

Wastewater surveillance for COVID-19 is a rapidly developing field. State, tribal, local, and health departments participating in the National Wastewater Surveillance System (NWSS) testing data to CDC. CDC then standardizes and interprets these data and presents them in the COVID Data Tracker. How often sites collect wastewater samples and how frequently data are reported to CDC varies by health department.

Wastewater data are meant to be used with other COVID-19 surveillance data to better understand COVID-19's spread in a community. Learn more about wastewater data by exploring each chart and map. To see a map of which SARS-CoV-2 variant is the most dominant at each wastewater sampling site, see [CDC COVID Data Tracker: Summary of Variant Surveillance](#).

[View information about the data and download the data.](#)

Wastewater Surveillance

Health Care Settings

Social Impact & Prevention

Variants & Genomic Surveillance

Antibody Seroprevalence

Post-COVID Conditions

Traveler-Based Genomic Surveillance

Other COVID-19 Data

Communications Resources

COVID-19 Home

✉ Get Email Updates

Sign up to receive the COVID Data Tracker Weekly Review.

Email Address:

[What's this?](#)

[Monitoring Wastewater Surveillance Data](#)

[Wastewater Metric Chart](#)

[Wastewater Metric Map](#)

[Data Downloads](#)

[Terms to Know](#)

[About the Data](#)

Maps, charts, and data provided by CDC, updates Mon-Fri by 8pm ET[†]. This represents all wastewater data s CDC's NWSS DCIPHER platform, with the exceptions described in the [About the Data section](#) below. Each dot represents a site. A site can represent all or part of a “[sewershed](#),” which is the area contributing wastewater location. Not all communities report wastewater data to CDC. Participation is voluntary, and wastewater san from sewer systems so communities that rely primarily on septic systems are not represented. In addition, s submit data to NWSS are not represented on the map due to various factors, such as small population size c specific sampling.

[View Footnotes and Download Data](#)

Wastewater Metric Chart

This chart shows how much virus levels have changed (increased and decreased) over time at v across the United States. It shows the percent of sites in each category of the percent change r date among all sites with available data.

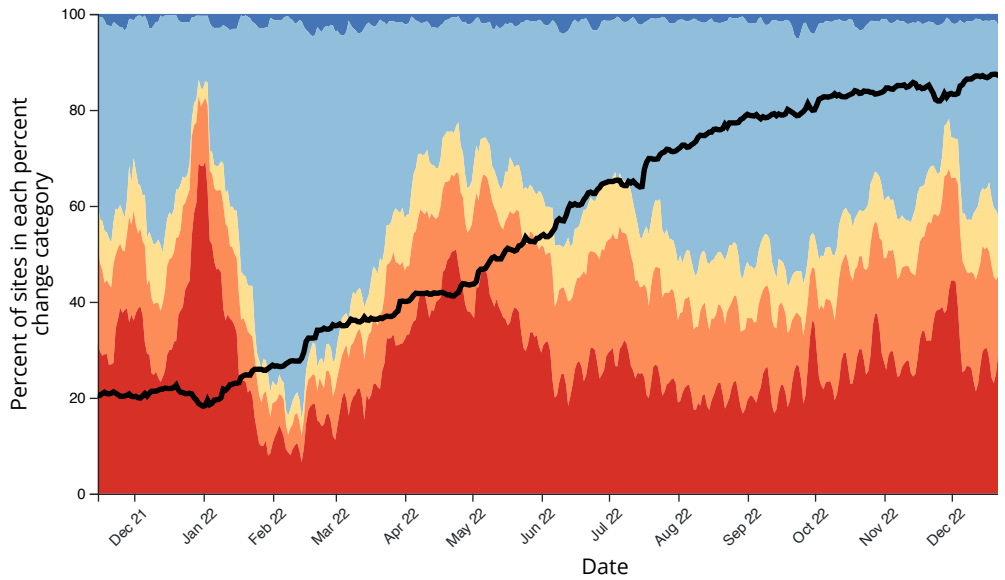
The percent change metric shows whether virus levels have increased or decreased at sites ov days.

- Blue categories (Large decrease (-100%); Decrease (-99% to -10%)): Virus levels decreased at these sites in the last 15 days.
- Yellow category (Stable (-9% to 9%)): Virus levels stayed about the same at these sites in the last 15 days.
- Orange and red categories (Increase (10% to 99%); Large increase (100% or more)): Virus levels increased at these sites in the last 15 days.

The chart shows the overall percent of sites that were in each category over time since January 2020. If more area on the chart is shaded light or dark blue, it means virus levels were decreasing at more sites at that point in time. If more area on the chart is shaded red or orange, it means virus levels were increasing at that point in time. Since the percent change in the last 15 days metric may be affected by how wastewater plants were collecting wastewater samples, the black line shows the number of sites with available data for each date.

Note: This chart **does not** show overall levels of SARS-CoV-2 in wastewater.

Percent of sites in each percent change category over time, United States*



Percent change categories Large decrease (-100%) Decrease (-99% to -10%) Stable (-9 to 9%)

Large increase (100% or more)

Number of sites reporting

*The darker bar on the right side of the figure highlights the most recent 2 weeks, which may reporting delays. The actual number of sites reporting during those 2 weeks will likely increase as data are added.

Download ▾

Wastewater Metric Map

State or territory:

Select State or Territory

County:

Select a state in order to enable county select

[Reset Selections](#)

Time Period: Jan 28, 2023 – Feb 11, 2023

Major Cities On

Major

Metric:

- Current virus levels in wastewater by site
- Percent change in the last 15 days
- Percent of wastewater samples with detectable virus

Show:

- Sites with no recent data
- Sites that started sampling after

Current virus levels in wastewater by site

This metric shows whether SARS-CoV-2 levels at a site are currently higher or lower than past levels at the same site. 0% means levels are the lowest they have been at the site; 100% means the highest they have been at the site. Public health officials watch for increasing levels of total wastewater over time and use these data to help make public health decisions.

⚠ Note: Sites began collecting data at different times. Sites that began reporting wastewater December 1, 2021 are not comparable to sites that started reporting data on or before Dec 1, 2021. The data history for these new sites is not long enough to reflect the same surges as the other sites.

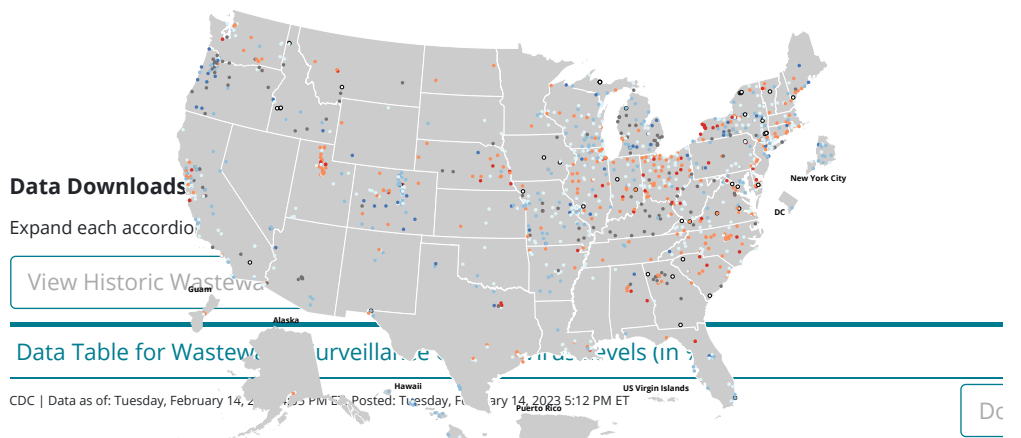
Current SARS-CoV-2 virus levels by site, United States

Current virus levels category	Num. sites	% sites	Category change in
<input type="checkbox"/> New Site	43	4	5%
<input type="checkbox"/> 0% to 19%	62	5	- 9%
<input type="checkbox"/> 20% to 39%	271	22	- 16%
<input type="checkbox"/> 40% to 59%	464	38	- 1%
<input type="checkbox"/> 60% to 79%	310	25	6%
<input type="checkbox"/> 80% to 100%	69	6	5%

Total sites with current data: 1219

Total number of wastewater sampling sites: 1371

[How is the current SARS-CoV-2 level compared to past levels calculated?](#)



Jurisdiction	Sewershed ID	Reporting Jurisdiction	County	Population Served
Alaska	1158	Alaska	Anchorage	15,000
Alaska	1159	Alaska	Anchorage	200,000

Select legend categories to filter points on the map

- New site
- 0% to 19%
- 20% to 39%
- 40% to 59%
- 60% to 79%
- 80% to 100%
- No rec

Alabama	1464	Alabama	Lee	72,000
Alabama	1778	Alabama	Marshall	9,000
Arkansas	1461	Arkansas	Saline	35,000
Arkansas	1509	Arkansas	White	25,000
Arkansas	1536	Arkansas	Greene	29,000
Arkansas	1537	Arkansas	Benton	17,737
Arkansas	1544	Arkansas	Garland	92,000
Arkansas	1565	Arkansas	Ouachita	10,200
Arkansas	446	Arkansas	Pulaski	32,043
Arkansas	741	Arkansas	Mississippi	5,500
Arizona	1271	Arizona	Pima	23,000

Jurisdiction	Sewershed ID	Reporting Jurisdiction	County	Population Served
Arizona	1327	Arizona	Mohave	30,000
Arizona	501	Arizona	La Paz	3,500
Arizona	808	Arizona	Mohave	37,500
California	1219	California	Lake	5,000
California	1288	California	El Dorado	40,000
California	1320	California	Ventura	230,000
California	1387	California	Monterey	250,000
California	1443	California	Imperial	50,000
California	1561	California	San Luis Obispo	6,500
California	495	California	Santa Cruz	60,000
California	506	California	Los Angeles, Ventura	100,000
California	564	California	Alameda	60,000
California	570	California	Sonoma	220,000
California	724	California	Contra Costa	215,394
California	778	California	Lake	10,080
California	793	California	San Luis Obispo	39,000
California	802	California	Santa Cruz	85,000
California	803	California	Santa Cruz	150,000
Colorado	1290	Colorado	Garfield	7,300
Connecticut	1079	Connecticut	New Haven	228,000
Connecticut	1196	Connecticut	New Haven	19,500
Connecticut	1395	Connecticut	Fairfield	52,265
Connecticut	1618	Connecticut	Hartford	25,000
Connecticut	291	Connecticut	Fairfield	75,000
Connecticut	771	Connecticut	Fairfield	120,000
Connecticut	795	Connecticut	Windham	10,000
Connecticut	806	Connecticut	Fairfield	65,000
Florida	1392	Florida	Hillsborough	180,000
Florida	1408	Florida	Orange, Seminole	85,700
Florida	1501	Florida	Alachua	100,000
Florida	1502	Florida	Alachua	100,000
Florida	1551	Florida	Palm Beach	300,000
Florida	1552	Florida	Leon	200,000
Florida	1631	Florida	Orange	50,000
Florida	511	Florida	Pinellas	103,000
Florida	574	Florida	Pinellas	220,000
Florida	706	Florida	Escambia	197,000
Georgia	1109	Georgia	Lowndes	65,000
Georgia	684	Georgia	Dekalb	325,000
Guam	1440	Guam	Guam	66,000
Guam	1446	Guam	Guam	8,000
Guam	1448	Guam	Guam	105,000
Hawaii	1175	Hawaii	Maui	52,000
Hawaii	710	Hawaii	Kauai	10,000
Hawaii	790	Hawaii	Honolulu	700,000
Hawaii	798	Hawaii	Honolulu	48,519
Iowa	1303	Iowa	Woodbury	102,000
Iowa	1447	Iowa	Mahaska	5,201
Iowa	1449	Iowa	Mahaska	6,357

Jurisdiction	Sewershed ID	Reporting Jurisdiction	County	Population Served
Iowa	544	Iowa	Johnson	75,849
Illinois	682	Illinois	Cook	265,000
Illinois	683	Illinois	Cook	161,000
Indiana	1267	Indiana	Kosciusko	21,600
Indiana	1273	Indiana	Dubois	16,000
Indiana	1289	Indiana	Vigo	58,500
Indiana	1350	Indiana	Allen	315,000
Indiana	1352	Indiana	Jefferson	16,000
Indiana	1918	Indiana	Tippecanoe	60,000
Indiana	828	Indiana	Hamilton	86,000
Kansas	1299	Kansas	Johnson	112,076
Kansas	1300	Kansas	Johnson	42,235
Kansas	1304	Kansas	Johnson	73,829
Kansas	807	Kansas	Ford	27,000
Kansas	833	Kansas	Shawnee	50,000
Kentucky	1207	Kentucky	Carroll	3,000
Louisiana	1107	Louisiana	East Baton Rouge	262,326
Louisiana	1116	Louisiana	East Baton Rouge	99,712
Louisiana	1615	Louisiana	Saint Tammany	15,000
Louisiana	1626	Louisiana	Jefferson	100,000
Louisiana	1633	Louisiana	Lafayette	40,000
Louisiana	1650	Louisiana	Lafayette	27,000
Louisiana	1651	Louisiana	Lafayette	10,000
Louisiana	1652	Louisiana	Lafayette	47,000
Louisiana	1659	Louisiana	Jefferson	100,000
Louisiana	727	Louisiana	Orleans	998,000
Massachusetts	1330	Massachusetts	Worcester	3,000
Massachusetts	1495	Massachusetts	Worcester	42,000
Massachusetts	470	Massachusetts	Hampden	55,000
Maryland	1261	Maryland	Anne Arundel	91,000
Maryland	1262	Maryland	Anne Arundel	11,000
Maryland	1284	Maryland	Anne Arundel	78,000
Maryland	1348	Maryland	Charles	88,500
Maryland	547	Maryland	Howard	270,000
Maryland	563	Maryland	Wicomico	37,000
Maryland	666	Maryland	Allegany	45,000
Maine	1206	Maine	York	21,000
Maine	1302	Maine	York	21,000
Maine	560	Maine	Sagadahoc	8,514
Maine	716	Maine	Cumberland	8,500
Minnesota	783	Minnesota	Ramsey, Anoka, Dakota, Hennepin, Washington	1,950,000
Minnesota	849	Minnesota	Hennepin, Carver, Scott	300,000
Montana	1176	Montana	Custer	8,800
North Carolina	1148	North Carolina	Surry	10,000
North Carolina	1220	North Carolina	Rowan	31,536
North Carolina	1223	North Carolina	Rowan	22,940
North Carolina	537	North Carolina	Stanly	20,000
North Carolina	538	North Carolina	Pasquotank	18,000

Jurisdiction	Sewershed ID	Reporting Jurisdiction	County	Population Served
North Carolina	569	North Carolina	Greene, Lenoir	20,484
North Dakota	1463	North Dakota	Grand Forks	67,000
North Dakota	1471	North Dakota	Stark	25,679
New Hampshire	285	New Hampshire	Carroll	25,000
New Hampshire	497	New Hampshire	Merrimack	43,000
New Jersey	1291	New Jersey	Passaic	54,000
New Jersey	1453	New Jersey	Monmouth	47,000
New Jersey	1616	New Jersey	Monmouth	40,000
New Mexico	1386	New Mexico	Los Alamos	13,000
New Mexico	764	New Mexico	Bernalillo, Sandoval	650,000
New Mexico	854	New Mexico	Los Alamos	5,852
Nevada	1082	Nevada	Clark	984,000
Nevada	554	Nevada	Washoe	200,000
Nevada	703	Nevada	Clark	650,000
Nevada	777	Nevada	Clark	246,258
New York City	498	New York City	Bronx	684,569
New York City	500	New York City	New York	588,772
New York City	505	New York City	Queens	410,812
New York City	509	New York City	New York	588,772
New York City	541	New York City	Kings	596,326
New York City	549	New York City	Kings	1,068,012
New York City	551	New York City	Kings	758,007
New York City	552	New York City	Richmond	198,128
Oklahoma	1264	Oklahoma	Carter	25,000
Oklahoma	767	Oklahoma	Garfield	51,000
Oklahoma	831	Oklahoma	Beckham	11,500
Pennsylvania	1081	Pennsylvania	Montgomery	13,000
Pennsylvania	1083	Pennsylvania	Montgomery	10,000
Pennsylvania	125	Pennsylvania	Allegheny, Butler	41,000
Pennsylvania	1473	Pennsylvania	Westmoreland	32,000
Pennsylvania	1617	Pennsylvania	Lackawanna	88,000
Rhode Island	1134	Rhode Island	Kent	60,224
Rhode Island	1224	Rhode Island	Kent	33,000
Rhode Island	548	Rhode Island	Providence	120,000
Rhode Island	565	Rhode Island	Kent	6,000
Rhode Island	677	Rhode Island	Bristol	21,100
South Carolina	1265	South Carolina	Georgetown	12,000
South Carolina	1541	South Carolina	Horry	30,000
South Carolina	599	South Carolina	Greenwood	12,000
South Dakota	1266	South Dakota	Lincoln, Minnehaha	215,000
South Dakota	672	South Dakota	Pennington	80,000
Tennessee	1282	Tennessee	Davidson, Rutherford, Williamson	600,000
Tennessee	1323	Tennessee	Shelby	300,000
Tennessee	1445	Tennessee	Sumner	45,000
Tennessee	1607	Tennessee	Chester	3,710
Texas	1131	Texas	Kaufman	138,700
Texas	1141	Texas	Travis	510,000
Texas	1231	Texas	Dallas	500,000
Texas	1752	Texas	Tarrant	1,200,000

Jurisdiction	Sewershed ID	Reporting Jurisdiction	County	Population Served
Texas	566	Texas	El Paso	143,000
Texas	566	Texas	El Paso	143,000
Texas	667	Texas	Galveston	26,400
Texas	673	Texas	El Paso	436,000
Texas	681	Texas	El Paso	142,000
Texas	709	Texas	El Paso	170,000
Texas	865	Texas	Webb	120,000
Texas	867	Texas	Webb	140,000
Virginia	1160	Virginia	Hanover	20,000
Virginia	1195	Virginia	Norfolk City	78,322
Virginia	1197	Virginia	York	118,497
Virginia	1198	Virginia	Wise	9,340
Virginia	1211	Virginia	York, Gloucester, Mathews	99,112
Virginia	1218	Virginia	Petersburg City	30,000
Virginia	1272	Virginia	Franklin	5,000
Virginia	892	Virginia	Colonial Heights City, Petersburg City, Prince George, Chesterfield, Dinwiddie	65,000
Vermont	1157	Vermont	Bennington	15,000
Vermont	1751	Vermont	Chittenden	22,000
Vermont	1753	Vermont	Windsor	4,500
Washington	1139	Washington	King, Pierce	896,000
Washington	1142	Washington	King, Snohomish	789,000
Washington	499	Washington	Clark	162,100
Washington	555	Washington	Snohomish	20,000
Washington	661	Washington	Snohomish	37,650
Washington	676	Washington	Snohomish, King	288,000
Washington	679	Washington	Snohomish	7,125
Washington	768	Washington	Snohomish	173,800
Washington	804	Washington	Clark	16,950
Wisconsin	1277	Wisconsin	Dane	360,000
Wisconsin	1349	Wisconsin	Rock	36,000
West Virginia	789	West Virginia	Raleigh	88,900
Wyoming	1353	Wyoming	Sheridan	20,000
Wyoming	188	Wyoming	Teton	13,036
Arizona	1054	Arizona	Yuma	10,873
Arizona	1055	Arizona	Yuma	19,000
Arizona	1055	Arizona	Yuma	4,725
Arizona	1212	Arizona	Maricopa	142,520
Arizona	1212	Arizona	Maricopa	64,521
Arizona	1212	Arizona	Maricopa	6,500
California	1188	California	Ventura	220,000
California	1361	California	Stanislaus	86,000
California	1365	California	Yolo	3,272
California	1371	California	Merced	42,000
California	1372	California	Merced	91,000
California	1513	California	Kern	279,023
California	215	California	Los Angeles, Ventura	4,000,000
California	299	California	Orange	1,800,000
California	352	California	Santa Clara	110,338

Jurisdiction	Sewershed ID	Reporting Jurisdiction	County	Population Served
California	356	California	San Bernardino	325,000
California	357	California	San Diego	2,200,000
California	363	California	San Mateo, San Francisco	750,000
California	363	California	San Mateo, San Francisco	750,000
California	383	California	Sacramento	1,480,000
California	393	California	San Mateo	199,000
California	77	California	Imperial	40,000
California	88	California	Contra Costa	487,300
Colorado	1156	Colorado	Pitkin	5,714
Colorado	142	Colorado	Larimer	5,818
Colorado	1451	Colorado	Chaffee	19,286
Colorado	150	Colorado	Larimer	17,997
Colorado	1515	Colorado	El Paso	4,779
Colorado	1525	Colorado	Weld	13,779
Colorado	1588	Colorado	Douglas	14,286
Colorado	1592	Colorado	Montrose	30,857
Colorado	161	Colorado	Garfield	16,714
Colorado	1748	Colorado	Delta	6,857
Colorado	1818	Colorado	Boulder	31,429
Colorado	226	Colorado	Boulder	17,600
Colorado	227	Colorado	Larimer	66,428
Colorado	252	Colorado	Denver	709,904
Colorado	329	Colorado	Pueblo	96,514
Colorado	396	Colorado	San Miguel	15,000
Colorado	437	Colorado	Larimer	9,292
Colorado	47	Colorado	Pitkin	5,500
Colorado	556	Colorado	Morgan	12,000
Colorado	576	Colorado	Routt	43,741
Colorado	657	Colorado	Summit	28,571
Colorado	733	Colorado	Douglas	34,786
Colorado	737	Colorado	Alamosa	18,364
Colorado	749	Colorado	Eagle	21,071
Colorado	751	Colorado	Mesa	89,286
Colorado	846	Colorado	Gunnison	30,000
Colorado	928	Colorado	Weld	20,000
Delaware	1184	Delaware	Kent	130,000
Delaware	1186	Delaware	Sussex	4,050
Delaware	1191	Delaware	Sussex	75,000
Florida	1144	Florida	Orange, Seminole	51,000
Florida	1145	Florida	Seminole	43,010
Georgia	1072	Georgia	Gwinnett	650,000
Georgia	1074	Georgia	Paulding	8,000
Georgia	1169	Georgia	Clarke	16,000
Georgia	1724	Georgia	Forsyth	36,500
Idaho	1023	Idaho	Latah	24,000
Idaho	1066	Idaho	Bonneville	60,000
Idaho	1129	Idaho	Kootenai	38,500
Idaho	1227	Idaho	Bannock	75,000
Idaho	1347	Idaho	Minidoka	6,200

Jurisdiction	Sewershed ID	Reporting Jurisdiction	County	Population Served
Idaho	1603	Idaho	Ada	117,635
Idaho	1915	Idaho	Nez Perce	35,000
Idaho	1916	Idaho	Canyon	100,200
Idaho	992	Idaho	Ada	167,500
Illinois	1062	Illinois	Kendall	320,000
Illinois	1100	Illinois	Du Page	40,438
Illinois	1247	Illinois	Lake	80,000
Illinois	1252	Illinois	Du Page	59,805
Illinois	1316	Illinois	Will	50,244
Illinois	1326	Illinois	Saint Clair	85,593
Illinois	1586	Illinois	Mchenry	15,360
Illinois	1609	Illinois	Du Page	45,000
Illinois	1817	Illinois	Iroquois	6,150
Illinois	1848	Illinois	Du Page	86,000
Illinois	1849	Illinois	Mchenry	10,240
Illinois	462	Illinois	Winnebago	353,599
Illinois	602	Illinois	Union	4,442
Illinois	604	Illinois	Cass	5,446
Illinois	616	Illinois	Christian	12,663
Illinois	617	Illinois	Mchenry	78,261
Illinois	622	Illinois	Effingham	12,384
Illinois	623	Illinois	Clay	5,100
Illinois	624	Illinois	Stephenson	27,218
Illinois	626	Illinois	Knox	39,153
Illinois	627	Illinois	Morgan	23,818
Illinois	628	Illinois	Kankakee	56,317
Illinois	635	Chicago	Cook	23,475
Illinois	635	Illinois	Cook	1,134,897
Illinois	636	Illinois	Cook	110,394
Illinois	637	Illinois	Cook	13,098
Illinois	639	Illinois	Cook	1,127,736
Illinois	641	Illinois	Cook	217,106
Illinois	643	Illinois	Lake	55,735
Illinois	644	Illinois	Lake	105,208
Illinois	645	Illinois	Lake	126,629
Illinois	649	Illinois	Bureau	7,555
Illinois	650	Illinois	Adams	50,695
Illinois	651	Illinois	Carroll	5,615
Illinois	652	Illinois	Shelby	5,329
Illinois	653	Illinois	Macoupin	4,480
Illinois	654	Illinois	Whiteside	18,678
Illinois	674	Chicago	Cook	23,324
Illinois	674	Chicago	Cook	54,362
Illinois	675	Chicago	Cook	77,799
Illinois	731	Illinois	Bureau	5,400
Illinois	857	Illinois	Lawrence	4,399
Illinois	983	Illinois	Mchenry	15,000
Illinois	984	Illinois	Du Page	18,800
Indiana	1456	Indiana	Clark	21,000

Jurisdiction	Sewershed ID	Reporting Jurisdiction	County	Population Served
Indiana	1459	Indiana	Jasper	5,800
Indiana	1479	Indiana	Elkhart	35,000
Indiana	1481	Indiana	Marion	14,000
Indiana	1619	Indiana	Marion	800,000
Kentucky	1253	Kentucky	Boyd	32,575
Kentucky	1257	Kentucky	Magoffin	3,508
Kentucky	1579	Kentucky	Franklin	36,137
Kentucky	1581	Kentucky	Jessamine	31,038
Kentucky	1771	Kentucky	Russell	6,483
Kentucky	1772	Kentucky	Mccreary	6,255
Kentucky	1773	Kentucky	Powell	4,603
Michigan	1036	Michigan	Allegan	5,500
Michigan	1040	Michigan	Ottawa	3,511
Michigan	1049	Michigan	Allegan	3,777
Michigan	1050	Michigan	Saint Joseph	10,681
Michigan	1089	Michigan	Chippewa	6,546
Michigan	1090	Michigan	Manistee	8,154
Michigan	1090	Michigan	Manistee	8,154
Michigan	1090	Michigan	Manistee	8,154
Michigan	1093	Michigan	Mackinac	3,460
Michigan	1104	Michigan	Mackinac	14,000
Michigan	1105	Michigan	Menominee	3,842
Michigan	1106	Michigan	Iosco	5,000
Michigan	1125	Michigan	Marquette	3,500
Michigan	1125	Michigan	Marquette	25,000
Michigan	1166	Michigan	Huron	4,000
Michigan	1214	Michigan	Kent	40,000
Michigan	1215	Michigan	Kent	41,000
Michigan	1216	Michigan	Midland	40,000
Michigan	1217	Michigan	Kent	145,000
Michigan	1239	Michigan	Isabella	7,615
Michigan	1585	Michigan	Kent	7,000
Michigan	1597	Michigan	Mecosta	21,000
Michigan	1627	Michigan	Gogebic	6,500
Michigan	1729	Michigan	Macomb	99,970
Michigan	1729	Michigan	Macomb	37,570
Michigan	1731	Michigan	Macomb	3,900
Michigan	761	Michigan	Lenawee	8,680
Michigan	762	Michigan	Washtenaw	330,000
Michigan	799	Michigan	Washtenaw	150,000
Michigan	822	Michigan	Delta	12,600
Michigan	861	Michigan	Saginaw	40,000
Michigan	888	Michigan	Calhoun	70,000
Michigan	889	Michigan	Ottawa	11,057
Michigan	890	Michigan	Ottawa	11,955
Michigan	891	Michigan	Kalamazoo	9,709
Michigan	891	Michigan	Kalamazoo	6,703
Michigan	891	Michigan	Kalamazoo	3,416
Michigan	891	Michigan	Kalamazoo	45,976

Jurisdiction	Sewershed ID	Reporting Jurisdiction	County	Population Served
Michigan	891	Michigan	Kalamazoo	11,246
Michigan	891	Michigan	Kalamazoo	31,189
Michigan	891	Michigan	Kalamazoo	194,170
Michigan	897	Michigan	Oakland, Macomb	1,482,000
Missouri	114	Missouri	Henry	9,118
Missouri	119	Missouri	Boone	123,180
Missouri	130	Missouri	Stoddard	6,000
Missouri	132	Missouri	Saint Charles	58,777
Missouri	133	Missouri	Saint Charles	47,758
Missouri	156	Missouri	Madison	4,000
Missouri	191	Missouri	Newton	15,906
Missouri	197	Missouri	Clay, Platte	13,940
Missouri	199	Missouri	Platte, Clay	12,855
Missouri	213	Missouri	Barton	4,532
Missouri	238	Missouri	Saline	10,113
Missouri	240	Missouri	Webster	8,000
Missouri	242	Missouri	Nodaway	12,000
Missouri	253	Missouri	Audrain	11,500
Missouri	259	Missouri	Barry, Lawrence	9,100
Missouri	264	Missouri	Saint Louis, Saint Louis City	306,647
Missouri	267	Missouri	Saint Louis	115,895
Missouri	268	Missouri	Saint Louis	451,367
Missouri	269	Missouri	Jefferson, Saint Louis	66,738
Missouri	270	Missouri	Saint Louis, Saint Charles	174,537
Missouri	279	Missouri	Newton	12,000
Missouri	293	Missouri	Jefferson, Saint Louis	27,391
Missouri	306	Missouri	Franklin, Saint Louis	7,001
Missouri	348	Missouri	Phelps	15,000
Missouri	355	Missouri	Andrew	4,572
Missouri	358	Missouri	Pettis	7,500
Missouri	360	Missouri	Pettis	10,730
Missouri	385	Missouri	Buchanan	27,000
Missouri	386	Missouri	Saint Charles	60,000
Missouri	423	Missouri	Johnson	11,883
Missouri	429	Missouri	Franklin	15,000
Missouri	64	Missouri	Saint Francois	7,165
Missouri	69	Missouri	Taney	6,155
Missouri	71	Missouri	Linn	3,979
Missouri	78	Missouri	Caldwell, Clinton, Dekalb	9,700
Missouri	81	Missouri	Cape Girardeau, Scott	33,540
Missouri	82	Missouri	Carroll	3,784
Missouri	83	Missouri	Jasper	12,000
Missouri	87	Missouri	Barry	3,300
Missouri	95	Missouri	Livingston	9,000
Montana	1032	Montana	Gallatin	3,000
Montana	1035	Montana	Gallatin	1,272
Montana	1310	Montana	Gallatin	50,000
Montana	976	Montana	Lewis And Clark	2,273
Montana	977	Montana	Lewis And Clark	37,125

Jurisdiction	Sewershed ID	Reporting Jurisdiction	County	Population Served
North Carolina	111	North Carolina	Wilson	49,384
North Carolina	1521	North Carolina	Mecklenburg	82,158
North Carolina	1523	North Carolina	Durham	142,000
North Carolina	167	North Carolina	Pitt	89,616
North Carolina	237	North Carolina	Mcdowell	8,459
North Carolina	332	North Carolina	Wake	550,000
North Carolina	335	North Carolina	Wake	7,776
North Carolina	451	North Carolina	New Hanover	67,743
North Carolina	86	North Carolina	Wake	75,886
Nebraska	1493	Nebraska	Holt	3,700
Nebraska	916	Nebraska	Platte	23,000
Nebraska	917	Nebraska	Dodge	28,000
Nebraska	919	Nebraska	Adams	24,692
Nebraska	921	Nebraska	Douglas	200,000
Nebraska	923	Nebraska	Douglas, Sarpy	600,000
Nebraska	924	Nebraska	Scotts Bluff	15,932
Nebraska	987	Nebraska	Stanton, Madison	27,000
Nebraska	988	Nebraska	Lincoln	24,000
New York	1000	New York	Erie	17,983
New York	1002	New York	Erie	24,461
New York	1003	New York	Monroe	487,322
New York	1006	New York	Chautauqua	32,501
New York	1010	New York	Monroe	155,096
New York	1011	New York	Cattaraugus	17,760
New York	1012	New York	Erie	83,961
New York	1021	New York	Nassau	20,616
New York	1030	New York	Broome	38,726
New York	1041	New York	Suffolk	278,775
New York	1043	New York	Suffolk	3,349
New York	1078	New York	Wayne	8,931
New York	1097	New York	Dutchess	38,207
New York	1098	New York	Sullivan	4,925
New York	1149	New York	Tioga	3,750
New York	1151	New York	Oneida	27,849
New York	1153	New York	Livingston	15,688
New York	1170	New York	Greene	4,896
New York	1213	New York	Ontario	17,936
New York	1242	New York	Schoharie	5,326
New York	1306	New York	Nassau	524,955
New York	1336	New York	Chemung	18,085
New York	1400	New York	Broome	52,501
New York	1400	New York	Broome	24,672
New York	1401	New York	Rockland	36,527
New York	1402	New York	Clinton	20,893
New York	1403	New York	Rockland	12,676
New York	1483	New York	Westchester	26,651
New York	1485	New York	Westchester	78,683
New York	1487	New York	Westchester	44,876
New York	1489	New York	Westchester	523,765

Jurisdiction	Sewershed ID	Reporting Jurisdiction	County	Population Served
New York	1800	New York	Dutchess	13,856
New York	1917	New York	Saint Lawrence	4,705
New York	426	New York	Orange	6,729
New York	479	New York	Chenango	6,734
New York	512	New York	Cayuga	31,814
New York	514	New York	Onondaga	16,168
New York	516	New York	Madison	4,908
New York	517	New York	Livingston	4,730
New York	518	New York	Steuben	5,162
New York	520	New York	Onondaga	39,352
New York	521	New York	Onondaga	242,377
New York	525	New York	Onondaga	50,727
New York	527	New York	Madison	9,207
New York	528	New York	Otsego	19,383
New York	52	New York	Steuben	5,941
New York	530	New York	Madison	3,317
New York	567	New York	Fulton	23,379
New York	690	New York	Cortland	26,950
New York	691	New York	Herkimer	13,924
New York	692	New York	Saint Lawrence	10,794
New York	693	New York	Ulster	10,577
New York	717	New York	Montgomery	19,679
New York	718	New York	Schuyler, Putnam	3,656
New York	719	New York	Nassau	24,041
New York	720	New York	Lewis	3,953
New York	738	New York	Putnam	4,480
New York	739	New York	Orange	42,921
New York	740	New York	Oneida	33,358
New York	742	New York	Albany	80,922
New York	836	New York	Nassau	611,349
New York	837	New York	Rockland	53,437
New York	838	New York	Rockland	207,430
New York	974	New York	Yates	5,339
New York	999	New York	Chautauqua	12,616
Ohio	101	Ohio	Preble	8,400
Ohio	102	Ohio	Marion	36,000
Ohio	108	Ohio	Erie	55,000
Ohio	121	Ohio	Ashtabula	12,000
Ohio	124	Ohio	Coshocton	12,000
Ohio	129	Ohio	Defiance	23,027
Ohio	131	Ohio	Tuscarawas	13,572
Ohio	134	Ohio	Montgomery	78,509
Ohio	141	Ohio	Belmont	13,169
Ohio	147	Ohio	Hancock	42,000
Ohio	1608	Ohio	Hocking	8,500
Ohio	168	Ohio	Darke	13,000
Ohio	170	Ohio	Butler	65,000
Ohio	187	Ohio	Franklin	645,940
Ohio	204	Ohio	Portage	29,000

Jurisdiction	Sewershed ID	Reporting Jurisdiction	County	Population Served
Ohio	219	Ohio	Allen	61,000
Ohio	221	Ohio	Hamilton	200,666
Ohio	222	Ohio	Medina	35,000
Ohio	225	Ohio	Lorain	72,000
Ohio	228	Ohio	Lucas	195,577
Ohio	241	Ohio	Union	24,677
Ohio	255	Ohio	Hamilton	566,136
Ohio	276	Ohio	Cuyahoga	313,158
Ohio	277	Ohio	Cuyahoga	524,154
Ohio	278	Ohio	Cuyahoga	103,379
Ohio	282	Ohio	Licking	45,000
Ohio	311	Ohio	Wood	21,000
Ohio	322	Ohio	Ottawa	7,000
Ohio	374	Ohio	Franklin	654,817
Ohio	382	Ohio	Clark	88,710
Ohio	388	Ohio	Jefferson	17,864
Ohio	422	Ohio	Trumbull	68,874
Ohio	428	Ohio	Fayette	14,000
Ohio	43	Ohio	Fulton	6,000
Ohio	455	Ohio	Mahoning	65,469
Ohio	456	Ohio	Muskingum	47,500
Ohio	46	Ohio	Ashtabula	31,430
Ohio	48	Ohio	Athens	24,536
Ohio	67	Ohio	Wood	32,000
Ohio	73	Ohio	Williams	8,655
Ohio	74	Ohio	Crawford	12,362
Ohio	975	Ohio	Greene	4,100
Ohio	98	Ohio	Pickaway	13,965
Oregon	469	Oregon	Jackson	21,105
Oregon	929	Oregon	Linn	57,785
Oregon	930	Oregon	Clatsop	11,326
Oregon	931	Oregon	Baker	9,860
Oregon	932	Oregon	Deschutes	92,850
Oregon	933	Oregon	Clackamas	14,206
Oregon	937	Oregon	Lincoln	8,865
Oregon	938	Oregon	Yamhill	24,120
Oregon	939	Oregon	Lincoln	10,400
Oregon	941	Oregon	Marion	26,273
Oregon	944	Oregon	Washington	9,900
Oregon	950	Oregon	Josephine	37,725
Oregon	952	Oregon	Hood River	7,800
Oregon	956	Oregon	Jackson	133,708
Oregon	957	Oregon	Coos	9,975
Oregon	958	Oregon	Malheur	10,966
Oregon	966	Oregon	Columbia	13,739
Oregon	970	Oregon	Jefferson	3,200
Pennsylvania	1366	Pennsylvania	Dauphin	124,000
Pennsylvania	1375	Pennsylvania	York	85,000
Pennsylvania	1376	Pennsylvania	Westmoreland	4,600

Jurisdiction	Sewershed ID	Reporting Jurisdiction	County	Population Served
Pennsylvania	1529	Pennsylvania	Indiana	28,809
Pennsylvania	1530	Pennsylvania	Centre	9,600
Pennsylvania	1777	Pennsylvania	Monroe	4,000
Pennsylvania	1787	Pennsylvania	Chester	10,500
South Carolina	906	South Carolina	Lexington	40,000
Texas	113	Houston	Harris	3,825
Texas	165	Houston	Harris, Fort Bend	28,742
Texas	176	Houston	Harris	9,375
Texas	272	Houston	Harris	4,010
Texas	287	Houston	Harris	12,892
Texas	288	Houston	Harris	33,102
Texas	350	Houston	Harris	20,608
Texas	373	Houston	Harris	32,485
Texas	375	Houston	Harris	293,227
Texas	409	Houston	Harris	97,918
Texas	434	Houston	Harris, Fort Bend	20,920
Texas	446	Houston	Harris	20,758
Utah	1077	Utah	Wasatch	19,936
Utah	17	Utah	Utah	112,901
Utah	1	Utah	Washington	24,970
Utah	23	Utah	Summit	7,460
Utah	25	Utah	Davis	21,872
Utah	27	Utah	Washington	92,047
Utah	29	Utah	Utah	12,510
Utah	30	Utah	Salt Lake	254,971
Utah	31	Utah	Utah	35,840
Utah	32	Utah	Tooele	36,244
Utah	34	Utah	Box Elder	12,451
Utah	3	Utah	Box Elder	21,443
Utah	6	Utah	Davis	64,533
Utah	7	Utah	Salt Lake	515,494
Virginia	1236	Virginia	Tazewell	12,000
Virginia	1237	Virginia	Tazewell	4,600
Virginia	1240	Virginia	Wythe	8,000
Virginia	180	Virginia	Chesapeake City, Virginia Beach City, Norfolk City, Portsmouth City	192,347
Virginia	1827	Virginia	Prince William, Fairfax, Stafford	165,901
Virginia	1828	Virginia	Stafford	44,000
Virginia	1829	Virginia	Bedford, Campbell, Amherst	220,000
Virginia	1830	Virginia	Albemarle	118,266
Virginia	1832	Virginia	Frederick	16,563
Virginia	1838	Virginia	Manassas City, Fairfax City, Fauquier, Fairfax, Prince William, Loudoun, Manassas Park City	350,000
Virginia	1859	Virginia	Henrico	330,000
Virginia	1859	Virginia	Henrico	330,000
Virginia	342	Virginia	Goochland, Henrico, Richmond City	225,000
Virginia	42	Virginia	Prince William, Stafford	92,000
Virginia	42	Virginia	Prince William, Stafford	92,000
Virginia	454	Virginia	Washington	7,300

Jurisdiction	Sewershed ID	Reporting Jurisdiction	County	Population Served
Washington	1398	Washington	Grant	8,475
Washington	1399	Washington	Jefferson	10,000
Washington	1512	Washington	Whitman	35,812
Washington	1757	Washington	Thurston	119,790
Washington	753	Washington	Franklin	73,000
Washington	759	Washington	Spokane	225,000
Wisconsin	115	Wisconsin	Waupaca	14,000
Wisconsin	136	Wisconsin	Chippewa, Eau Claire	73,000
Wisconsin	182	Wisconsin	Saint Croix	14,000
Wisconsin	231	Wisconsin	Dane	345,000
Wisconsin	232	Wisconsin	Manitowoc	34,500
Wisconsin	236	Wisconsin	Marinette	11,000
Wisconsin	239	Wisconsin	Marathon, Wood	19,300
Wisconsin	313	Wisconsin	Marinette	3,500
Wisconsin	318	Wisconsin	Grant	11,000
Wisconsin	331	Wisconsin	Racine	139,000
Wisconsin	344	Wisconsin	Saint Croix, Pierce	15,900
Wisconsin	364	Wisconsin	Sheboygan	75,000
Wisconsin	391	Wisconsin	Dane	33,000
Wisconsin	420	Wisconsin	Vernon	4,400
Wisconsin	44	Wisconsin	Ashland	8,200
Wisconsin	60	Wisconsin	Jackson	5,000
Wisconsin	696	Wisconsin	Jefferson, Dodge	23,660
West Virginia	1248	West Virginia	Randolph	13,156
West Virginia	1439	West Virginia	Mason	5,515
West Virginia	1862	West Virginia	Putnam	28,759
West Virginia	1865	West Virginia	Cabell	11,250
West Virginia	387	West Virginia	Monongalia	48,328
West Virginia	459	West Virginia	Kanawha	50,000
West Virginia	460	West Virginia	Jefferson	17,000
West Virginia	463	West Virginia	Marshall	12,000
West Virginia	465	West Virginia	Wood	48,050
West Virginia	687	West Virginia	Harrison	26,498
West Virginia	735	West Virginia	Taylor	6,071
West Virginia	91	West Virginia	Kanawha	49,500
Alabama	1664	Alabama	Jefferson	95,000
Alabama	1719	Alabama	Jefferson	200,000
Alabama	1893	Alabama	Jefferson	77,000
California	1371	California	Merced	42,000
California	1665	California	San Mateo	40,000
California	1668	California	Contra Costa	484,800
California	1669	California	Marin	104,250
California	1678	California	Santa Cruz	160,000
California	1679	California	Santa Cruz	160,000
California	1685	California	Alameda	740,000
California	1687	California	Sonoma	65,000
California	1693	California	Los Angeles	3,500,000
California	1694	California	Los Angeles	200,000
California	1711	California	Marin	18,000

Jurisdiction	Sewershed ID	Reporting Jurisdiction	County	Population Served
California	1712	California	San Mateo	28,000
California	1713	California	Napa	83,300
California	1720	California	Contra Costa	100,000
California	1789	California	Orange	48,000
California	1792	California	Orange	129,000
California	1872	California	Alameda	229,476
California	1873	California	Alameda	47,229
California	1876	California	Marin	25,000
California	1888	California	Sonoma	230,000
California	1892	California	San Diego	2,200,000
California	1896	California	Santa Barbara	69,290
California	1898	California	Monterey	262,000
California	1904	California	San Bernardino	890,000
California	1906	California	San Diego	1,600,000
California	1911	California	Solano	121,000
California	1912	California	Sonoma	28,000
California	1913	California	Yolo	59,000
California	834	California	Riverside	91,765
Colorado	1901	Colorado	Douglas	35,000
Colorado	1902	Colorado	Douglas	25,000
Florida	1686	Florida	Orange	195,299
Florida	1702	Florida	Orange	66,690
Florida	1715	Florida	Orange	183,009
Florida	1840	Florida	Miami-Dade	776,150
Florida	1868	Florida	Miami-Dade	829,725
Florida	1875	Florida	Seminole	95,000
Georgia	1666	Georgia	Fulton	73,821
Georgia	1692	Georgia	Fulton	84,486
Georgia	1714	Georgia	Chattahoochee, Muscogee	278,000
Georgia	1740	Georgia	Fulton	94,000
Georgia	1741	Georgia	Fulton	94,000
Georgia	1742	Georgia	Fulton	94,000
Iowa	1839	Iowa	Clinton	29,300
Iowa	1867	Iowa	Johnson	23,000
Illinois	1689	Illinois	Du Page	86,000
Indiana	1739	Indiana	Clark	25,000
Indiana	1889	Indiana	St Joseph	130,000
Indiana	772	Indiana	Monroe	56,090
Kansas	1710	Kansas	Saline	47,000
Kansas	1811	Kansas	Wyandotte	35,000
Kansas	1900	Kansas	Wyandotte	90,000
Kentucky	1899	Kentucky	Jefferson	423,913
Massachusetts	1780	Massachusetts	Worcester, Norfolk, Suffolk, Plymouth, Middlesex	2,400,000
Maine	1754	Maine	Cumberland	10,000
Michigan	1909	Michigan	Grand Traverse	30,623
Minnesota	1883	Minnesota	Blue Earth, Nicollet	70,000
North Carolina	1894	North Carolina	Lenoir	25,000
New Hampshire	1706	New Hampshire	Merrimack	4,000

Jurisdiction	Sewershed ID	Reporting Jurisdiction	County	Population Served
New Hampshire	1880	New Hampshire	Strafford	30,000
New Hampshire	497	New Hampshire	Merrimack	45,000
New Jersey	788	New Jersey	Essex, Bergen, Hudson, Union, Passaic	1,500,000
Ohio	1810	Ohio	Portage, Summit	365,000
Texas	1673	Texas	Dallas	200,000
Texas	1683	Texas	Dallas	186,000
Texas	1761	Texas	Potter, Randall	60,000
Texas	1762	Texas	Potter, Randall	140,000
Texas	1765	Texas	Wichita	90,000
Texas	1881	Texas	Cooke	17,300
Texas	865	Texas	Webb	120,000
Texas	867	Texas	Webb	140,000
Virginia	1908	Virginia	Carroll	3,000
Alaska	1490	Alaska	Juneau	10,000
Alaska	1491	Alaska	Juneau	20,000
Alabama	1333	Alabama	Colbert	19,000
Arkansas	1442	Arkansas	Lonoke	27,000
Arkansas	1444	Arkansas	Pulaski	5,000
Arkansas	1462	Arkansas	Washington	93,949
Arkansas	1465	Arkansas	Washington	93,949
Arkansas	1472	Arkansas	Saint Francis	13,000
Arkansas	1540	Arkansas	Boone	14,000
Arkansas	1542	Arkansas	Pulaski	30,377
Arkansas	1543	Arkansas	Pulaski	23,812
Arkansas	1545	Arkansas	Pulaski	28,500
Arkansas	1546	Arkansas	Pulaski	18,463
Arkansas	1548	Arkansas	Jefferson	42,323
Arkansas	1550	Arkansas	Pope	31,000
Arkansas	1558	Arkansas	Hempstead	10,500
Arizona	1334	Arizona	Maricopa	150,000
Arizona	1382	Arizona	Maricopa	50,000
Arizona	1383	Arizona	Maricopa	2,400,000
Arizona	590	Arizona	Pima	347,900
Arizona	715	Arizona	Pima	397,407
California	1173	California	Contra Costa	494,300
California	1199	California	Kings	59,000
California	1230	California	San Luis Obispo	47,400
California	1409	California	San Bernardino	78,000
California	1560	California	San Luis Obispo	14,276
California	1593	California	San Luis Obispo	6,500
California	1759	California	San Luis Obispo	15,200
California	1822	California	Marin	13,000
California	461	California	Humboldt	43,173
California	763	California	Santa Cruz	160,000
California	779	California	Los Angeles	200,000
California	834	California	Riverside	91,765
Connecticut	1163	Connecticut	New London	22,000
Connecticut	534	Connecticut	Fairfield	100,000
Connecticut	686	Connecticut	New Haven	112,000

Jurisdiction	Sewershed ID	Reporting Jurisdiction	County	Population Served
Connecticut	832	Connecticut	New London	40,000
District of Columbia	486	District of Columbia	District Of Columbia	1,600,000
Florida	1410	Florida	Palm Beach, Martin	96,136
Florida	1606	Florida	Lee	76,800
Florida	1613	Florida	Sarasota	100,000
Florida	668	Florida	Miami-Dade	920,528
Florida	669	Florida	Orange	277,823
Florida	670	Florida	Orange	59,587
Florida	671	Florida	Orange	463,672
Florida	711	Florida	Miami-Dade	829,725
Florida	781	Florida	Miami-Dade	776,150
Georgia	476	Georgia	Richmond	197,191
Guam	1441	Guam	Guam	9,000
Guam	1450	Guam	Guam	7,000
Hawaii	1181	Hawaii	Maui	59,000
Hawaii	1203	Hawaii	Honolulu	300,000
Hawaii	1204	Hawaii	Honolulu	109,236
Hawaii	1205	Hawaii	Maui	49,000
Hawaii	1208	Hawaii	Honolulu	20,800
Hawaii	1221	Hawaii	Hawaii	32,600
Hawaii	1337	Hawaii	Hawaii	5,000
Iowa	105	Iowa	Johnson	21,000
Iowa	1496	Iowa	Winneshiek	8,500
Illinois	462	Illinois	Winnebago	240,000
Illinois	546	Illinois	Kankakee	65,000
Indiana	1162	Indiana	Hamilton	98,000
Indiana	1269	Indiana	Lake	28,000
Indiana	1281	Indiana	Delaware	67,000
Indiana	1293	Indiana	St Joseph	130,000
Indiana	1314	Indiana	Wayne	36,000
Indiana	1318	Indiana	Huntington	17,612
Indiana	1319	Indiana	Howard	45,000
Indiana	678	Indiana	Bartholomew	49,000
Indiana	765	Indiana	Monroe	28,350
Indiana	772	Indiana	Monroe	67,500
Kansas	1292	Kansas	Johnson	66,377
Kansas	1305	Kansas	Johnson	54,985
Kansas	472	Kansas	Reno	40,000
Kansas	787	Kansas	Shawnee	90,000
Kentucky	810	Kentucky	Estill	5,000
Louisiana	1229	Louisiana	Rapides	60,000
Louisiana	1497	Louisiana	Jefferson	300,000
Louisiana	1614	Louisiana	Jefferson	65,364
Louisiana	1632	Louisiana	Iberia	20,000
Louisiana	1656	Louisiana	Jefferson	100,000
Louisiana	792	Louisiana	Orleans	389,000
Massachusetts	1180	Massachusetts	Worcester	12,000
Massachusetts	1311	Massachusetts	Bristol	100,000

Jurisdiction	Sewershed ID	Reporting Jurisdiction	County	Population Served
Massachusetts	1384	Massachusetts	Middlesex	180,000
Maryland	1260	Maryland	Anne Arundel	89,000
Maryland	1268	Maryland	Anne Arundel	150,000
Maryland	1278	Maryland	Anne Arundel	22,000
Maryland	1285	Maryland	Anne Arundel	13,000
Maryland	561	Maryland	Washington	90,000
Maine	347	Maine	Knox	7,000
Maine	475	Maine	Piscataquis	900
Maine	484	Maine	Franklin	2,750
Maine	507	Maine	Oxford	1,000
Maine	65	Maine	Lincoln	1,759
Minnesota	1108	Minnesota	Dakota, Scott	250,000
Minnesota	993	Minnesota	Scott, Dakota	150,000
Missouri	1559	Missouri	Jefferson	12,500
Mississippi	1393	Mississippi	Lafayette	27,662
Montana	562	Montana	Missoula	68,015
North Carolina	1179	North Carolina	Watauga	26,000
North Carolina	421	North Carolina	Duplin, Pender	10,000
North Carolina	492	North Carolina	Henderson	16,000
North Carolina	536	North Carolina	Swain, Jackson	12,000
North Carolina	539	North Carolina	Vance	15,000
North Carolina	575	North Carolina	Mitchell	3,500
Nebraska	1312	Nebraska	Keith	4,793
Nebraska	1411	Nebraska	Saunders	4,800
New Hampshire	402	New Hampshire	Sullivan	6,500
New Jersey	1322	New Jersey	Essex, Union	1,300,000
New Jersey	1385	New Jersey	Hudson	145,000
New Jersey	1605	New Jersey	Bergen	564,563
New Jersey	784	New Jersey	Somerset, Union, Middlesex	880,000
New Jersey	788	New Jersey	Passaic, Essex, Hudson, Bergen	1,500,000
New Mexico	1177	New Mexico	Santa Fe	87,505
New Mexico	853	New Mexico	Los Alamos	13,179
Nevada	663	Nevada	Clark	265,000
New York City	485	New York City	Kings	283,428
New York City	487	New York City	Queens	848,328
New York City	503	New York City	Queens	90,474
New York City	545	New York City	Queens	728,123
New York City	550	New York City	Richmond	244,918
New York City	553	New York City	Kings	192,050
Oklahoma	769	Oklahoma	Comanche	93,000
Oregon	1164	Oregon	Clackamas, Washington	25,780
Oregon	1200	Oregon	Multnomah, Washington	654,741
Oregon	1201	Oregon	Washington, Multnomah, Clackamas	45,600
Pennsylvania	1161	Pennsylvania	Lehigh	6,598
Pennsylvania	1388	Pennsylvania	Allegheny	22,000
Pennsylvania	1454	Pennsylvania	Bucks	55,000
Rhode Island	464	Rhode Island	Providence	240,000
Rhode Island	76	Rhode Island	Providence	10,000
Rhode Island	835	Rhode Island	Bristol	11,000

Jurisdiction	Sewershed ID	Reporting Jurisdiction	County	Population Served
South Carolina	1159	South Carolina	Florence, Darlington	45,000
South Carolina	1549	South Carolina	Greenville	140,280
South Carolina	600	South Carolina	Greenwood	48,000
South Dakota	1165	South Dakota	Yankton	15,500
South Dakota	493	South Dakota	Beadle	13,289
Tennessee	1283	Tennessee	Davidson	600,000
Tennessee	1329	Tennessee	Shelby	300,000
Tennessee	1508	Tennessee	Hawkins, Sullivan	60,500
Tennessee	1539	Tennessee	Sullivan	50,000
Tennessee	496	Tennessee	Bradley	52,000
Texas	1140	Texas	Travis	500,000
Texas	1210	Texas	Dallas	900,000
Texas	1494	Texas	Galveston	20,000
Texas	593	Texas	Galveston	89,600
Texas	805	Texas	Dallas	900,000
Texas	811	Texas	Bexar	415,000
Texas	847	Texas	Bexar	230,000
Texas	848	Texas	Bexar	630,000
Texas	863	Texas	Webb	30,000
Utah	1270	Utah	Tooele	13,000
Virginia	1113	Virginia	Arlington	207,627
Virginia	1202	Virginia	Frederick	51,470
Virginia	1259	Virginia	Clifton Forge City	5,000
Virginia	1275	Virginia	Hampton City, Newport News City	141,543
Virginia	1338	Virginia	Mecklenburg	5,300
Virginia	540	Virginia	Henry	16,000
Vermont	1080	Vermont	Chittenden	31,000
Vermont	1452	Vermont	Caledonia	3,500
Vermont	1520	Vermont	Washington	15,000
Vermont	701	Vermont	Chittenden	8,500
Vermont	770	Vermont	Franklin	7,500
Washington	1084	Washington	Clark	120,000
Washington	510	Washington	Clark	81,140
Wyoming	1317	Wyoming	Sweetwater	12,000
Arizona	1053	Arizona	Yuma	8,271
Arizona	1059	Arizona	Yuma	18,039
Arizona	1061	Arizona	Yuma	25,369
Arizona	1212	Arizona	Maricopa	53,578
Arizona	1212	Arizona	Maricopa	17,280
Arizona	1212	Arizona	Maricopa	9,430
Arizona	1212	Arizona	Maricopa	9,848
Arizona	1212	Arizona	Maricopa	12,542
California	1019	California	Lake	13,200
California	126	California	Yolo	70,717
California	1373	California	Stanislaus	230,000
California	1377	California	Yolo	7,285
California	1378	California	Yolo	59,000
California	137	California	Alameda, Contra Costa	740,000
California	1524	California	Plumas	4,217

Jurisdiction	Sewershed ID	Reporting Jurisdiction	County	Population Served
California	158	California	Fresno	650,000
California	211	California	Los Angeles	3,500,000
California	305	California	Santa Clara	236,000
California	353	California	Santa Clara	1,500,000
California	354	California	Santa Clara	153,000
California	362	California	San Francisco, San Mateo	250,000
California	362	California	San Mateo, San Francisco	250,000
California	59	California	Kern	168,750
Colorado	1024	Colorado	Archuleta	27,857
Colorado	1111	Colorado	Teller	7,143
Colorado	1135	Colorado	Teller	6,379
Colorado	1154	Colorado	Pitkin	17,571
Colorado	116	Colorado	El Paso	102,203
Colorado	117	Colorado	El Paso	303,855
Colorado	122	Colorado	Summit	7,857
Colorado	1514	Colorado	El Paso	5,936
Colorado	1517	Colorado	El Paso	10,000
Colorado	1518	Colorado	El Paso	9,286
Colorado	151	Colorado	Larimer	92,126
Colorado	152	Colorado	Larimer	26,621
Colorado	1563	Colorado	Elbert	3,571
Colorado	1591	Colorado	Otero	29,643
Colorado	163	Colorado	Weld	83,319
Colorado	224	Colorado	Boulder, Weld	75,543
Colorado	251	Colorado	Denver	345,453
Colorado	368	Colorado	Adams	54,560
Colorado	370	Colorado	Larimer	23,193
Colorado	372	Colorado	Arapahoe, Denver	247,443
Colorado	408	Colorado	Summit	35,643
Colorado	49	Colorado	Arapahoe, Adams	268,003
Colorado	578	Colorado	Las Animas	14,286
Colorado	58	Colorado	Weld, Larimer	7,946
Colorado	656	Colorado	La Plata	23,429
Colorado	66	Colorado	Boulder	89,383
Colorado	72	Colorado	Broomfield	53,355
Colorado	747	Colorado	Arapahoe	25,714
Colorado	748	Colorado	El Paso	34,286
Colorado	841	Colorado	Adams	21,429
Colorado	843	Colorado	Eagle	30,714
Colorado	844	Colorado	Eagle	19,286
Colorado	845	Colorado	Summit	14,286
Colorado	887	Colorado	Summit	18,571
Delaware	1183	Delaware	Sussex	7,000
Delaware	1185	Delaware	Sussex	4,392
Delaware	1187	Delaware	New Castle	17,145
Delaware	1192	Delaware	Sussex	7,000
Delaware	1194	Delaware	New Castle	539,000
Georgia	1071	Georgia	Paulding	10,000
Georgia	1073	Georgia	Cobb	190,000

Jurisdiction	Sewershed ID	Reporting Jurisdiction	County	Population Served
Georgia	1309	Georgia	Newton	32,000
Georgia	1723	Georgia	Laurens	17,000
Georgia	1728	Georgia	Cobb	190,000
Georgia	1747	Georgia	Lowndes	19,400
Georgia	1820	Georgia	Floyd	75,000
Idaho	1067	Idaho	Twin Falls	48,951
Idaho	1225	Idaho	Bingham	14,045
Idaho	1228	Idaho	Caribou	3,200
Idaho	1249	Idaho	Blaine	5,338
Idaho	1406	Idaho	Elmore	5,500
Idaho	1801	Idaho	Payette	6,350
Idaho	1802	Idaho	Elmore	16,000
Idaho	1803	Idaho	Canyon	100,200
Idaho	1914	Idaho	Kootenai	24,000
Idaho	818	Idaho	Ada	120,344
Illinois	1243	Illinois	Du Page	76,324
Illinois	1527	Illinois	Kendall	13,477
Illinois	1610	Illinois	Washington	3,425
Illinois	1816	Illinois	Madison	26,000
Illinois	1847	Illinois	Du Page	65,000
Illinois	603	Illinois	Kane	11,290
Illinois	605	Illinois	Saint Clair	26,150
Illinois	606	Illinois	Saint Clair	26,150
Illinois	607	Illinois	Boone	25,134
Illinois	611	Illinois	Fulton	13,506
Illinois	612	Illinois	Greene	3,064
Illinois	619	Illinois	Vermilion	30,479
Illinois	620	Illinois	Macon	88,500
Illinois	621	Illinois	Perry	6,448
Illinois	625	Illinois	Jo Daviess	3,460
Illinois	631	Illinois	Mcdonough	22,004
Illinois	632	Illinois	Cook	270,647
Illinois	633	Illinois	Warren	10,836
Illinois	634	Illinois	Jefferson	21,169
Illinois	635	Chicago	Cook	3,816
Illinois	638	Illinois	Cook	1,127,737
Illinois	642	Illinois	Du Page	128,358
Illinois	647	Illinois	Peoria	157,379
Illinois	655	Illinois	Champaign	91,041
Illinois	675	Chicago	Cook	29,370
Illinois	675	Chicago	Cook	83,455
Illinois	675	Chicago	Cook	24,099
Illinois	697	Illinois	Rock Island	25,202
Illinois	698	Illinois	Rock Island	43,768
Illinois	699	Illinois	Tazewell	30,997
Illinois	871	Illinois	La Salle	18,307
Illinois	894	Illinois	Lee	15,115
Illinois	972	Illinois	Saint Clair	32,289
Illinois	978	Illinois	Mclean	42,000

Jurisdiction	Sewershed ID	Reporting Jurisdiction	County	Population Served
Illinois	979	Illinois	Mclean	44,238
Illinois	980	Illinois	Mclean	44,237
Illinois	981	Illinois	De Kalb	43,862
Illinois	982	Illinois	Cook	1,263,110
Indiana	1458	Indiana	Noble	10,000
Indiana	1480	Indiana	Rush	6,208
Indiana	1480	Indiana	Rush	6,208
Indiana	1482	Indiana	Porter	36,000
Kentucky	1254	Kentucky	Rowan	15,212
Kentucky	1255	Kentucky	Johnson	5,258
Kentucky	1582	Kentucky	Caldwell	6,108
Kentucky	1583	Kentucky	Allen	4,557
Kentucky	1767	Kentucky	Lee	3,138
Kentucky	1770	Kentucky	Christian	33,426
Michigan	1018	Michigan	Bay	20,000
Michigan	1020	Michigan	Dickinson	3,200
Michigan	1039	Michigan	Saint Joseph	7,623
Michigan	1040	Michigan	Ottawa	3,535
Michigan	1040	Michigan	Ottawa	11,200
Michigan	1048	Michigan	Calhoun	6,964
Michigan	1086	Michigan	Ottawa	20,000
Michigan	1087	Michigan	Genesee	72,240
Michigan	1088	Michigan	Ottawa	25,000
Michigan	1091	Michigan	Schoolcraft	3,412
Michigan	1092	Michigan	Chippewa	15,000
Michigan	1096	Michigan	Muskegon	125,000
Michigan	1102	Michigan	Dickinson	13,500
Michigan	1121	Michigan	Saginaw	6,300
Michigan	1122	Michigan	Otsego	3,670
Michigan	1125	Michigan	Marquette	3,500
Michigan	1125	Michigan	Marquette	4,500
Michigan	1125	Michigan	Marquette	4,500
Michigan	1136	Michigan	Clare	3,042
Michigan	1138	Michigan	Isabella	25,629
Michigan	1155	Michigan	Tuscola	3,000
Michigan	1167	Michigan	Kent	15,000
Michigan	1168	Michigan	Kent	68,000
Michigan	1315	Michigan	Macomb	135,000
Michigan	1598	Michigan	Wexford	10,450
Michigan	1599	Michigan	Eaton	9,074
Michigan	1600	Michigan	Mason	8,100
Michigan	1729	Michigan	Wayne	5,190
Michigan	1729	Michigan	Oakland	3,080
Michigan	1729	Michigan	Oakland	5,800
Michigan	1815	Michigan	Arenac	5,500
Michigan	756	Michigan	Kent	265,000
Michigan	757	Michigan	Jackson	90,000
Michigan	800	Michigan	Genesee	95,000
Michigan	801	Michigan	Grand Traverse	45,000

Jurisdiction	Sewershed ID	Reporting Jurisdiction	County	Population Served
Michigan	823	Michigan	Houghton	14,000
Michigan	860	Michigan	Gratiot	8,976
Michigan	874	Michigan	Emmet	7,900
Michigan	889	Michigan	Ottawa	6,657
Michigan	889	Michigan	Ottawa	6,524
Michigan	889	Michigan	Ottawa	45,608
Michigan	890	Michigan	Ottawa	15,498
Michigan	890	Michigan	Ottawa	8,278
Michigan	890	Michigan	Ottawa	36,912
Michigan	891	Michigan	Kalamazoo	12,366
Michigan	891	Michigan	Kalamazoo	14,378
Michigan	891	Michigan	Kalamazoo	39,068
Michigan	896	Michigan	Wayne, Macomb	492,000
Michigan	898	Michigan	Oakland, Wayne	840,600
Missouri	139	Missouri	Miller	4,895
Missouri	143	Missouri	Saint Francois	10,114
Missouri	159	Missouri	Callaway	12,790
Missouri	171	Missouri	Marion, Ralls	16,000
Missouri	190	Missouri	Cole, Callaway	41,153
Missouri	192	Missouri	Jasper	34,403
Missouri	194	Missouri	Clay, Platte	76,759
Missouri	195	Missouri	Cass, Jackson, Johnson	490,000
Missouri	196	Missouri	Jackson	25,000
Missouri	198	Missouri	Clay	12,000
Missouri	200	Missouri	Johnson, Jackson, Wyandotte	61,250
Missouri	202	Missouri	Dunklin	11,300
Missouri	218	Missouri	Clay	35,300
Missouri	265	Missouri	Saint Louis	149,112
Missouri	266	Missouri	Jefferson, Saint Louis	24,174
Missouri	280	Missouri	Vernon	8,082
Missouri	284	Missouri	Christian	20,000
Missouri	312	Missouri	Perry	9,000
Missouri	317	Missouri	Platte	8,000
Missouri	321	Missouri	Butler	17,000
Missouri	359	Missouri	Pettis	8,250
Missouri	365	Missouri	New Madrid, Scott	17,000
Missouri	380	Missouri	Greene	22,818
Missouri	404	Missouri	Lincoln	12,019
Missouri	407	Missouri	Franklin	7,936
Missouri	424	Missouri	Johnson	14,477
Missouri	438	Missouri	Saint Charles	44,852
Missouri	441	Missouri	Howell	12,000
Missouri	63	Missouri	Polk	10,500
Missouri	68	Missouri	Taney	10,559
Missouri	827	Missouri	Dent	4,512
Missouri	858	Missouri	Jackson, Cass	367,300
North Carolina	144	North Carolina	Cumberland	151,589
North Carolina	1611	North Carolina	Davidson, Guilford	116,390
North Carolina	166	North Carolina	Guilford	135,821

Jurisdiction	Sewershed ID	Reporting Jurisdiction	County	Population Served
North Carolina	216	North Carolina	Scotland	15,527
North Carolina	271	North Carolina	Buncombe, Henderson	173,000
North Carolina	303	North Carolina	Orange, Durham	78,141
North Carolina	334	North Carolina	Wake	30,655
North Carolina	345	North Carolina	Northampton, Halifax	14,320
North Carolina	369	North Carolina	Orange, Durham	108,105
North Carolina	405	North Carolina	Jackson	13,296
North Carolina	450	North Carolina	New Hanover	58,361
North Carolina	452	North Carolina	Forsyth	178,000
North Carolina	53	North Carolina	Carteret	3,500
North Carolina	84	North Carolina	Wake	84,189
North Carolina	85	North Carolina	Wake	74,331
North Carolina	92	North Carolina	Mecklenburg	68,685
North Carolina	93	North Carolina	Mecklenburg	182,501
North Carolina	94	North Carolina	Mecklenburg	120,000
Nebraska	1331	Nebraska	York	8,000
Nebraska	1799	Nebraska	Nemaha	3,800
Nebraska	915	Nebraska	Dawes	5,561
Nebraska	918	Nebraska	Hall	52,000
Nebraska	920	Nebraska	Buffalo	33,790
Nebraska	922	Nebraska	Lancaster	100,000
Nebraska	925	Nebraska	Lancaster	200,000
Nebraska	926	Nebraska	Wayne	5,560
New York	1009	New York	Niagara	48,196
New York	1013	New York	Erie	71,131
New York	1013	New York	Erie	14,742
New York	1022	New York	Schenectady	78,444
New York	1042	New York	Columbia	6,374
New York	1044	New York	Suffolk	24,147
New York	1045	New York	Essex	6,264
New York	1068	New York	Tompkins	56,967
New York	1099	New York	Wyoming	3,448
New York	1112	New York	Albany	109,426
New York	1150	New York	Suffolk	7,741
New York	1171	New York	Schoharie	5,326
New York	123	New York	Steuben	10,605
New York	1325	New York	Franklin	4,918
New York	1335	New York	Chemung	38,037
New York	1404	New York	Rockland	10,890
New York	1405	New York	Rockland	4,115
New York	1460	New York	Orange	28,914
New York	1484	New York	Westchester	94,095
New York	1486	New York	Westchester	40,301
New York	1488	New York	Westchester	31,046
New York	1504	New York	Sullivan	6,639
New York	1538	New York	Sullivan	4,548
New York	1557	New York	Orange	6,563
New York	1797	New York	Dutchess	21,516
New York	1821	New York	Dutchess	14,525

Jurisdiction	Sewershed ID	Reporting Jurisdiction	County	Population Served
New York	1844	New York	Saint Lawrence	22,552
New York	1852	New York	Saint Lawrence	14,475
New York	1855	New York	Albany	31,023
New York	477	New York	Essex	3,076
New York	483	New York	Delaware	3,581
New York	513	New York	Onondaga	30,613
New York	515	New York	Madison	4,843
New York	519	New York	Orange	6,369
New York	522	New York	Orange	27,434
New York	524	New York	Orange	36,227
New York	529	New York	Orange	8,568
New York	531	New York	Jefferson	4,077
New York	532	New York	Onondaga	25,965
New York	580	New York	Monroe	43,074
New York	689	New York	Tompkins	9,770
New York	694	New York	Franklin	7,175
New York	695	New York	Oswego	14,199
New York	721	New York	Rensselaer	79,699
New York	722	New York	Saratoga	152,482
New York	723	New York	Seneca	6,961
New York	776	New York	Ulster	26,599
New York	869	New York	Warren	23,462
New York	986	New York	Washington	12,260
New York	998	New York	Erie	431,141
Ohio	112	Ohio	Wayne	27,000
Ohio	127	Ohio	Montgomery	226,729
Ohio	140	Ohio	Lorain	54,500
Ohio	157	Ohio	Sandusky	25,000
Ohio	1805	Ohio	Huron	3,276
Ohio	186	Ohio	Lawrence	10,445
Ohio	205	Ohio	Hardin	8,500
Ohio	214	Ohio	Fairfield	24,303
Ohio	233	Ohio	Richland	52,000
Ohio	235	Ohio	Washington	15,284
Ohio	263	Ohio	Knox	18,000
Ohio	273	Ohio	Hamilton	125,247
Ohio	274	Ohio	Henry	12,246
Ohio	291	Ohio	Huron	17,000
Ohio	301	Ohio	Lucas	44,680
Ohio	304	Ohio	Butler	22,000
Ohio	309	Ohio	Licking	3,300
Ohio	315	Ohio	Miami	20,581
Ohio	326	Ohio	Scioto	20,366
Ohio	36	Ohio	Summit	377,378
Ohio	395	Ohio	Hamilton	83,058
Ohio	398	Ohio	Lucas	372,208
Ohio	403	Ohio	Montgomery	65,000
Ohio	411	Ohio	Wyandot	6,700
Ohio	442	Ohio	Montgomery	113,629

Jurisdiction	Sewershed ID	Reporting Jurisdiction	County	Population Served
Ohio	54	Ohio	Greene	46,160
Ohio	79	Ohio	Stark	85,000
Ohio	859	Ohio	Mercer	4,800
Oregon	934	Oregon	Benton	58,856
Oregon	935	Oregon	Polk	16,555
Oregon	936	Oregon	Lane	8,925
Oregon	940	Oregon	Deschutes	32,255
Oregon	942	Oregon	Washington	220,000
Oregon	943	Oregon	Washington	40,000
Oregon	945	Oregon	Multnomah	662,235
Oregon	947	Oregon	Lane	10,200
Oregon	949	Oregon	Washington	40,000
Oregon	951	Oregon	Umatilla	18,775
Oregon	953	Oregon	Klamath	20,840
Oregon	955	Oregon	Yamhill	34,615
Oregon	959	Oregon	Umatilla	17,500
Oregon	961	Oregon	Marion	229,000
Oregon	965	Oregon	Marion	10,520
Oregon	967	Oregon	Marion	10,840
Oregon	969	Oregon	Umatilla	7,605
Oregon	971	Oregon	Lane	235,155
Pennsylvania	1357	Pennsylvania	Montgomery	30,000
Pennsylvania	1358	Pennsylvania	Cumberland	25,000
Pennsylvania	1359	Pennsylvania	Erie	200,000
Pennsylvania	1367	Pennsylvania	Franklin	67,000
Pennsylvania	1369	Pennsylvania	Westmoreland	25,000
Pennsylvania	1370	Pennsylvania	Lehigh	200,000
Pennsylvania	1375	Pennsylvania	York	85,000
Pennsylvania	1455	Pennsylvania	Delaware	6,800
Pennsylvania	1533	Pennsylvania	Centre	72,000
Pennsylvania	1553	Pennsylvania	Mckean	14,194
Pennsylvania	1554	Pennsylvania	Mercer	16,000
Pennsylvania	1775	Pennsylvania	Lackawanna	15,700
Pennsylvania	1775	Pennsylvania	Lackawanna	15,700
Pennsylvania	1776	Pennsylvania	Mercer	19,000
Pennsylvania	1809	Pennsylvania	Chester	13,500
South Carolina	1871	South Carolina	Beaufort	20,000
South Carolina	877	South Carolina	Kershaw	8,825
South Carolina	878	South Carolina	Charleston	64,170
South Carolina	883	South Carolina	York	88,000
South Carolina	884	South Carolina	Greenville	400,000
South Carolina	885	South Carolina	Georgetown	30,000
South Carolina	908	South Carolina	Richland	60,000
South Carolina	909	South Carolina	Horry	195,000
Texas	135	Houston	Harris	16,030
Texas	149	Houston	Harris	4,170
Texas	160	Houston	Harris	40,689
Texas	183	Houston	Harris	16,804
Texas	201	Houston	Harris	124,000

Jurisdiction	Sewershed ID	Reporting Jurisdiction	County	Population Served
Texas	207	Houston	Harris, Montgomery	52,055
Texas	250	Houston	Harris	20,161
Texas	289	Houston	Harris	19,867
Texas	290	Houston	Harris	95,600
Texas	307	Houston	Harris	5,497
Texas	35	Houston	Harris	551,150
Texas	366	Houston	Harris	109,414
Texas	367	Houston	Harris	109,414
Texas	406	Houston	Harris	59,188
Texas	40	Houston	Harris	117,968
Texas	435	Houston	Harris	33,645
Texas	439	Houston	Harris	85,129
Texas	443	Houston	Harris	3,623
Texas	449	Houston	Harris	8,610
Texas	56	Houston	Harris	70,900
Texas	97	Houston	Harris	37,359
Utah	10	Utah	Cache	9,095
Utah	11	Utah	Salt Lake	89,507
Utah	11	Utah	Salt Lake, Utah	94,484
Utah	12	Utah	Cache	94,005
Utah	15	Utah	Grand, San Juan	9,896
Utah	16	Utah	Weber, Davis	228,700
Utah	18	Utah	Utah	102,624
Utah	19	Utah	Carbon	17,312
Utah	20	Utah	Utah	21,231
Utah	21	Utah	Duchesne	6,790
Utah	22	Utah	Summit	24,374
Utah	24	Utah	Davis	84,981
Utah	26	Utah	Utah	53,313
Utah	28	Utah	Salt Lake	209,645
Utah	2	Utah	Uintah	29,513
Utah	33	Utah	Utah	253,112
Utah	5	Utah	Iron	32,451
Utah	9	Utah	Davis, Weber	208,850
Virginia	1237	Virginia	Tazewell	4,600
Virginia	1576	Virginia	Loudoun	300,000
Virginia	1576	Virginia	Loudoun	300,000
Virginia	177	Virginia	Chesapeake City, Norfolk City, Virginia Beach City	530,848
Virginia	178	Virginia	Isle Of Wight, Suffolk City, Chesapeake City, Portsmouth City	197,608
Virginia	181	Virginia	Williamsburg City, Newport News City, York, New Kent, James City	69,059
Virginia	1826	Virginia	Wise	14,000
Virginia	1828	Virginia	Stafford	44,000
Virginia	1829	Virginia	Amherst, Campbell, Bedford	220,000
Virginia	1831	Virginia	Rockingham, Harrisonburg City	81,000
Virginia	1833	Virginia	Montgomery, Pulaski, Radford	70,000
Virginia	1834	Virginia	Roanoke, Roanoke City, Salem, Botetourt	300,000

Jurisdiction	Sewershed ID	Reporting Jurisdiction	County	Population Served
Virginia	1837	Virginia	Russell	3,100
Virginia	38	Virginia	Alexandria City, Fairfax	300,000
Virginia	38	Virginia	Alexandria City, Fairfax	300,000
Virginia	61	Virginia	Montgomery	52,500
Washington	1076	Washington	Chelan	35,550
Washington	1143	Washington	Pierce	43,000
Washington	1397	Washington	Pierce	295,855
Washington	1635	Washington	Yakima	117,072
Washington	754	Washington	Benton	59,609
Washington	755	Washington	Benton	15,000
Washington	758	Washington	Benton	83,000
Washington	760	Washington	Spokane	120,000
Wisconsin	120	Wisconsin	Columbia	6,900
Wisconsin	128	Wisconsin	Brown	43,000
Wisconsin	153	Wisconsin	Waukesha	51,000
Wisconsin	164	Wisconsin	Brown, Kewaunee	189,000
Wisconsin	172	Wisconsin	Washington, Dodge	17,320
Wisconsin	1851	Wisconsin	Walworth	28,000
Wisconsin	189	Wisconsin	Rock	63,000
Wisconsin	203	Wisconsin	Kenosha	122,000
Wisconsin	209	Wisconsin	La Crosse	85,000
Wisconsin	223	Wisconsin	Columbia	3,100
Wisconsin	243	Wisconsin	Juneau	4,400
Wisconsin	246	Wisconsin	Dunn	5,000
Wisconsin	248	Wisconsin	Lincoln	9,700
Wisconsin	256	Wisconsin	Ozaukee, Milwaukee	470,007
Wisconsin	257	Wisconsin	Waukesha, Milwaukee, Racine, Washington, Ozaukee	615,934
Wisconsin	260	Wisconsin	Green	11,000
Wisconsin	297	Wisconsin	Jefferson, Waukesha	22,300
Wisconsin	302	Wisconsin	Winnebago	78,300
Wisconsin	320	Wisconsin	Sheboygan	9,150
Wisconsin	325	Wisconsin	Columbia	11,000
Wisconsin	389	Wisconsin	Portage	27,000
Wisconsin	392	Wisconsin	Douglas	28,000
Wisconsin	41	Wisconsin	Outagamie, Winnebago, Calumet	72,810
Wisconsin	432	Wisconsin	Waupaca	8,000
Wisconsin	433	Wisconsin	Marathon	42,350
West Virginia	1250	West Virginia	Boone	4,555
West Virginia	1860	West Virginia	Kanawha	9,000
West Virginia	1861	West Virginia	Wayne, Cabell	56,000
West Virginia	1864	West Virginia	Cabell	11,250
West Virginia	206	West Virginia	Mineral	8,168
West Virginia	445	West Virginia	Ohio	50,000
West Virginia	466	West Virginia	Mercer	36,000
Alabama	1716	Alabama	Jefferson	30,000
Alabama	1718	Alabama	Jefferson	225,000
California	1690	California	Los Angeles	4,000,000
California	1695	California	Marin	30,000

Jurisdiction	Sewershed ID	Reporting Jurisdiction	County	Population Served
California	1703	California	Marin	53,000
California	1760	California	Yolo	4,006
California	1766	California	Yolo	7,286
California	1790	California	Orange	120,000
California	1869	California	Riverside	350,000
California	1874	California	Alameda	68,150
California	1882	California	San Benito	42,000
California	1885	California	San Luis Obispo	31,037
California	1887	California	San Mateo	150,000
California	1905	California	Marin	30,000
California	1910	California	Stanislaus	86,000
Delaware	1930	Delaware	Sussex	13,172
Florida	1631	Florida	Orange	50,000
Florida	1841	Florida	Miami-Dade	920,528
Florida	1897	Florida	Palm Beach	90,000
Georgia	1663	Georgia	Fulton	189,593
Georgia	1697	Georgia	Fulton	12,818
Iowa	1783	Iowa	Muscatine	24,400
Iowa	1791	Iowa	Wapello	25,529
Iowa	1884	Iowa	Marshall	27,400
Idaho	1842	Idaho	Ada	186,901
Idaho	1879	Idaho	Kootenai	50,540
Idaho	813	Idaho	Ada	108,556
Illinois	1721	Illinois	Du Page	63,000
Indiana	1738	Indiana	Clark	25,000
Kansas	1813	Kansas	Wyandotte	15,000
Kansas	1895	Kansas	Douglas	800,000
Maryland	1782	Maryland	Washington	90,000
Maryland	1808	Maryland	Saint Marys	55,000
Maine	1843	Maine	York	10,000
Maine	1903	Maine	Cumberland	65,000
Michigan	1691	Michigan	Jackson	90,000
Michigan	1781	Michigan	Kent	75,000
Michigan	1878	Michigan	Washtenaw	125,000
Michigan	1890	Michigan	Macomb	140,000
Minnesota	1886	Minnesota	Olmsted	120,000
North Carolina	1662	North Carolina	Forsyth	92,000
New Jersey	1907	New Jersey	Monmouth	52,672
Ohio	1891	Ohio	Mahoning	174,000
Pennsylvania	1667	Pennsylvania	Dauphin	125,000
Pennsylvania	1737	Pennsylvania	Delaware	220,000
South Carolina	1700	South Carolina	Greenville	142,376
Utah	1708	Utah	Utah	115,000
Utah	1877	Utah	Salt Lake	600,000

Data Table for Wastewater Surveillance Current Virus Levels (in %)

Terms to Know

Virus levels: SARS-CoV-2 viral RNA concentrations in wastewater. RNA is the virus's genetic material.

Normalization: A statistical method to account for differences in variables such as wastewater flow rate and number sewer system. In other words, normalization reduces excess variation (or “noise”) and helps account for things like changes in weather events that can impact wastewater. Normalized data can be compared over time and between different locations. The data presented on this page are based on SARS-CoV-2 viral RNA concentrations in wastewater that have been normalized. For more information, see the [Analytics page](#).

Sewershed: The geographic area contributing wastewater to a sampling location. Sewersheds may cross county or state boundaries. Sewersheds are referred to as “sites” on the map.

About the Data

†Data will update Monday through Friday as soon as they are reviewed and verified, oftentimes before 8 pm ET. Updates on the following day when reporting coincides with a federal holiday. Note: Daily updates (Mon-Fri) might be delayed due to COVID-19.

Percent of sites in each percent change category over time

- At any point in time, this chart shows what percent of sites reported decreased levels of virus in the previous 15 days, what percent reported increased levels, and what percent stayed the same.
- Viewed over time, the chart shows how this distribution changed.
- For each date, the number of sites in each percent change category is counted and divided by the total number of sites with current data. This information is provided on a stacked area chart to show the change in the percent of sites in each category since January 1, 2021.
- To simplify the chart, the “-9% to 0%” and “1% to 9%” categories were combined into “-9% to 9%,” and the “100% to 1000% or more” categories were combined into “100% or more.” Because the number of sampling sites has changed since January 1, 2021, the total number of sites with current data is shown as a black line on the chart.
- Not all sites have data since January 1, 2021, and not all sites have data for all dates shown on the chart.
- The percent of sites in each percent change category for each date may not add up to 100% due to rounding.

Current virus levels in wastewater by site

- This metric shows whether SARS-CoV-2 levels at a site are currently higher or lower than past levels at the same site. The ordered levels are then grouped into five categories (0-19%, 20-39%, 40-59%, 60-79%, and 80-100%) based on their levels are compared to previous levels. The levels in the 0-19% group represent the lowest levels seen at that site, and those in the 80-100% group represent the highest.
- Using December 1, 2021 as a starting date for all sites makes data more comparable between sites. Sites that began reporting wastewater data after December 1, 2021 are not comparable to sites that have been reporting data since December 1, 2021 because the data history for these new sites is not long enough to reflect the same surges as the other sites.
- The “New site” category means a site just started collecting wastewater samples and has reported fewer than 10 samples, not enough to meaningfully compare levels at the site over time.

Percent change in the last 15 days

- This metric shows how much normalized SARS-CoV-2 viral levels in wastewater at each site increased or decreased over the 15-day time period. This metric does not show overall levels of SARS-CoV-2 in wastewater. Percent change compares current data to show changing trends. A large percent increase does not necessarily mean SARS-CoV-2 viral levels are high. For instance, a change from 1 unit to 2 units would be a percent change of 100%. A change from 500,000 units to 1,000,000 units is also a percent change of 100%.
- Percent change is calculated as the modeled change over 15 days, based on linear regression of log-transformed viral levels. A site must report at least 2 samples over the 15-day period to calculate percent change. Sites with “No recent data” (reported fewer than 2 samples for the current 15-day period) are listed as “No recent data” on the map.

Percent of wastewater samples with detectable virus in the last 15 days

- This metric shows the percent of wastewater samples at each site that were positive for SARS-CoV-2 RNA over the last 15 days. This metric does not show overall levels of SARS-CoV-2 in wastewater.
- This metric is calculated by dividing the number of samples in which SARS-CoV-2 was detected at a site by the total number of samples collected for the site during the 15-day period and multiplying by 100.
- Sites with at least one sample and no SARS-CoV-2 viral detections over the past 15 days are listed as “Non-detectable” on the map as hollow circles with a black outline.
- Sites with no samples for the current 15-day period are listed as “No recent data” and colored gray on the map.

SARS-CoV-2 concentrations in wastewater over time

- When a site is selected, a smoothed, spline fit SARS-CoV-2 concentration line is shown for the last 4 months, as displayed on the map. The smoothed SARS-CoV-2 concentration line shows how SARS-CoV-2 concentrations in wastewater at a sampling site have changed over the last 4 months.
- At least 4 samples are required to produce the smoothed SARS-CoV-2 concentration line. If a major change in laboratory method was reported, only data since the new laboratory method was reported are shown. Sites labeled as ‘New sites’ in the map should be viewed with caution since they have only a few samples to generate their trends line.

Category change in the last 7 days

- This metric shows the change in the number of sites (represented as a percent) that are in a specific metric category over the last 7 days compared to the previous 7 days. In other words, it shows how many sites have been added or removed from the metric category in the past week. It is calculated by subtracting the current number of sites in the metric category from the number of sites in the metric category 7 days ago, then dividing by the number of sites in the metric category 7 days ago and multiplying by 100.

metric category from the number of sites in the same category 7 days earlier and dividing by the number of sites 7 days earlier.

- **If a metric category had no sites in it 7 days earlier, the category change in the last 7 days is listed as "N/A**" si divide by 0.

County-level data

- Data are presented by sewershed (the geographic area contributing wastewater to a sampling location). Sampling wastewater treatment plants or upstream in the sewage network. Sewersheds may cross county or state boundaries; multiple sewersheds may serve a single county, and a single sewershed may serve multiple counties. Sewershed "sites" on the map.

Sewershed locations

- Data are plotted in the ZIP code of the sampling location, so points on the map do not correspond exactly to sampling locations.
- All counties represented by a sampling location are highlighted when the sampling location point is selected.
- The District of Columbia (DC) and New York City (NYC) are shown separately on the map to denote sampling locations. In the "State or Territory" dropdown menu, select "District of Columbia" or "New York City" to zoom to point that jurisdiction. Please note some DC sampling locations may receive wastewater from parts of counties in Virginia; some NYC sampling locations may receive wastewater from parts of counties in surrounding states.

Data subject to change

- Wastewater disease surveillance data presented are the best available data and are subject to change. These data are for the most recent 15-day period due to processing and reporting delays. All data are provisional.

May 2022 Coverage Limitations

- Beginning April 15, 2022, approximately 150 wastewater sites in 29 states began transitioning to a new wastewater surveillance system. During this transition, these sites will not have recent data displayed and will be colored gray on the map. It will take time enough data to be collected to calculate the metrics displayed on this page. Results for these sites are expected to be available between mid-May and June 2022.

Data not shown

- Data from sewersheds that serve fewer than 3,000 people.
- Data from sewersheds where population estimates are missing.
- Data from facility or institution-specific sampling locations.
- Wastewater treatment plant names and the names of upstream sampling sites are made anonymous using a color number.
- Approximately 20% of US households are on septic systems; the exact percent varies by location. These systems do not have wastewater treatment plants where sampling often occurs. Therefore, households on septic systems are not represented.
- Data from sewersheds currently being monitored but not submitted by health departments to CDC. Certain communities collect wastewater samples but do not submit their data to CDC.
- Data from sewersheds may not be presented if there are data quality issues.

Data source

- Data displayed are derived from two sources:
- Data are submitted to CDC by state, tribal, local, and territorial (STLT) health departments participating in the National Wastewater Surveillance System. Participation is voluntary, so not all jurisdictions are reporting to CDC.
- Data are reported through a CDC-managed contract for commercial testing, which is intended to supplement the data from the STLT wastewater surveillance programs.

Laboratory methods

- SARS-CoV-2 concentrations in wastewater are measured using reverse transcription quantitative polymerase chain reaction (RT-qPCR) or reverse transcription digital polymerase chain reaction (RT-ddPCR). Laboratory processing and quantification methods vary between sampling sites or, less commonly, within a sampling site over time. Since SARS-CoV-2 concentration estimates from these lab methods, concentration values should not be compared across sampling locations. Instead, percent change in CoV-2 concentrations and current levels compared to past levels at the same site are provided. These metrics are comparable across lab methods. When testing a sample, SARS-CoV-2 is considered detected when any PCR replicates for the sample are positive. Positive is defined for RT-qPCR as a Ct value less than 40 and for RT-ddPCR as 3 or more positive droplets/partitions. For more information, see the Wastewater Surveillance Testing Methods page.

Data download

- These data can be downloaded from data.cdc.gov: [NWSS Public SARS-CoV-2 Wastewater Metric Data](#) and [NWSS Public SARS-CoV-2 Concentration in Wastewater Data](#)
- The data dictionary for these data (Public Analytics Data Dictionary) is also available.
- To request detailed wastewater data, including a full-time history of raw concentrations, email nwss@cdc.gov with the subject 'NWSS public data request.' You will be required to sign a data use agreement.

Wondering what all the data mean?

CDC's [COVID-Data Tracker Weekly Review](#) helps you stay up to date on interpretation of key data and trends.

How does wastewater surveillance work?

Wastewater data can show changes in disease trends 4 to 6 days before those changes in trends are seen in clinic. A single wastewater sample captures the infection status of thousands to millions of individuals. Learn more: [National Wastewater Surveillance System \(NWSS\)](#).

If it looks like virus levels in wastewater are rising in my community, what should I do?

Check your county's [COVID-19 Community Level](#) and follow the recommended prevention steps. Public health officials watch for sustained increasing levels of the virus in wastewater and use these data to inform decisions. State and local health officials track a variety of data and put this information together to understand the situation and decide how to best respond.

How do I build NWSS in my community?

Wastewater-based disease surveillance is an exciting new tool to help communities monitor their health. Find [info to consider](#) when implementing a wastewater-based disease surveillance system.

Is there wastewater sampling in my community?

New sampling sites are being added over time as health departments begin sampling and reporting wastewater surveillance data. Some communities not represented on this dashboard may be conducting wastewater surveillance. If you would like to know if wastewater surveillance is happening in your community, contact your [health department](#) or local government. At this time, we do not release the names of the wastewater treatment plants or zip codes where sampling sites are located. However, information on the counties served by the wastewater sampling sites is provided.

Cite COVID Data Tracker

Centers for Disease Control and Prevention. COVID Data Tracker. Atlanta, GA: US Department of Health and Human Services, CDC; 2023, February 15. <https://covid.cdc.gov/covid-data-tracker>

[COVID-19 Home >](#)

All COVID-19 topics including prevention, travel, work, and school

HAVE QUESTIONS?



Visit CDC-INFO



Call 800-232-4636



Email CDC-INFO



Open 24/7

CDC INFORMATION

[About CDC](#)

[Jobs](#)

[Funding](#)

[Policies](#)

[File Viewers & Players](#)

[Privacy](#)

[FOIA](#)

No Fear Act
OIG
Nondiscrimination
Accessibility

CONNECT WITH CDC



U.S. Department of Health & Human Services

USA.gov

CDC Website Exit Disclaimer [↗](#)