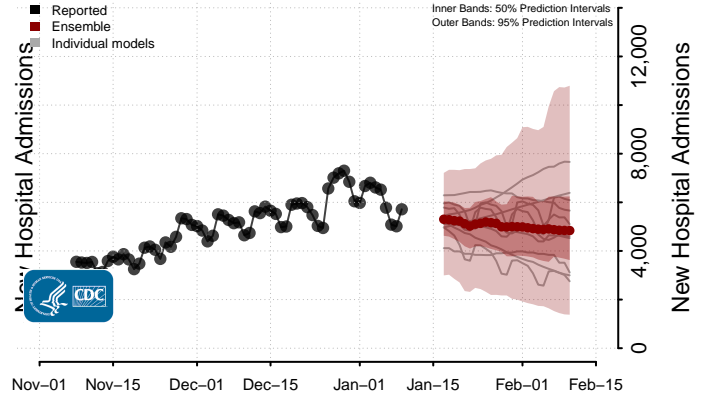
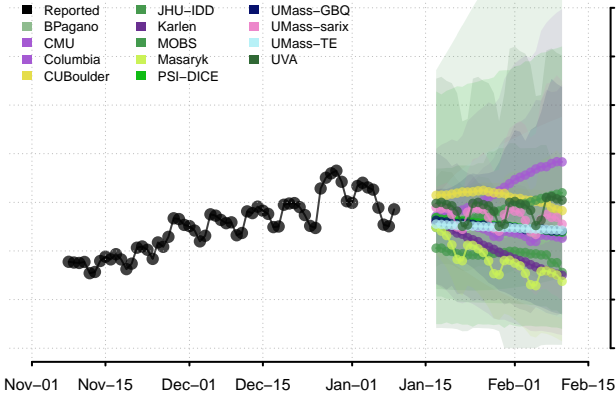
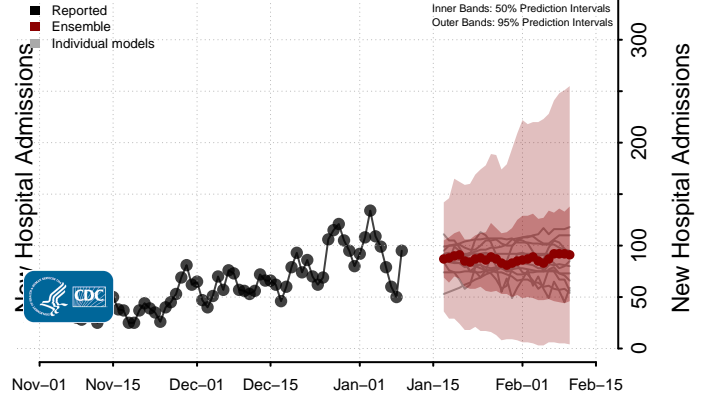
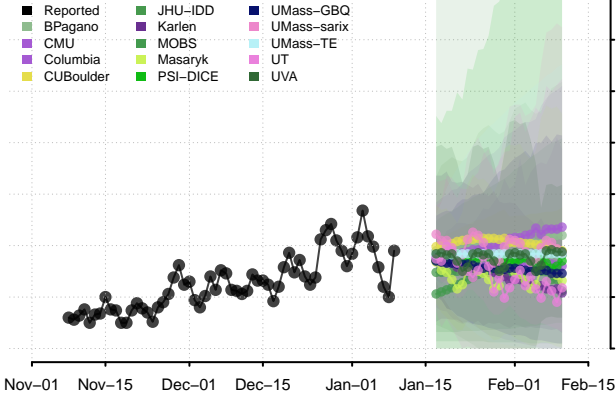


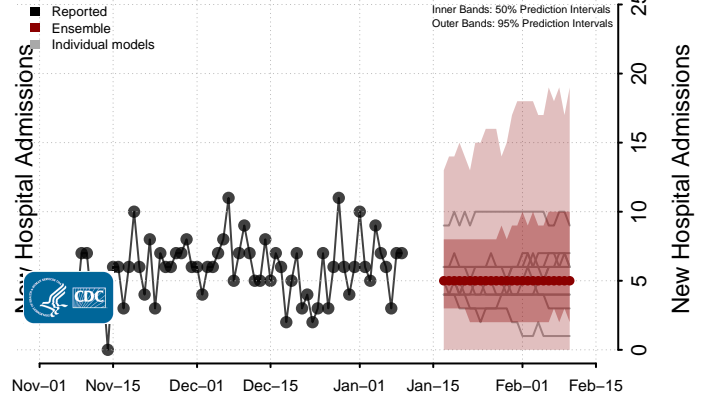
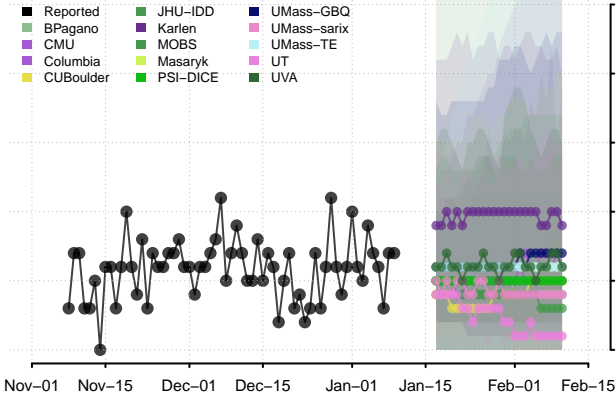
National



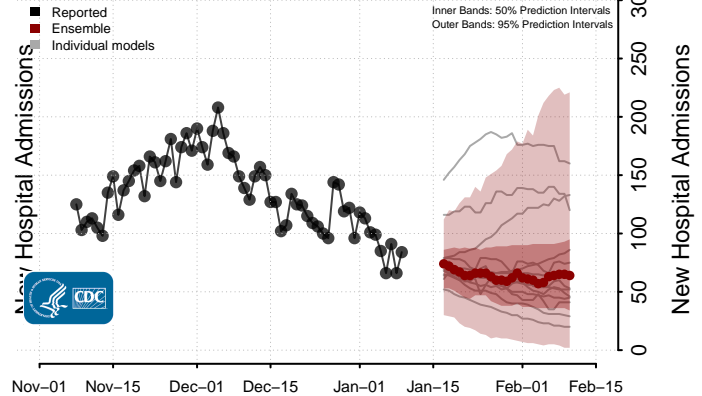
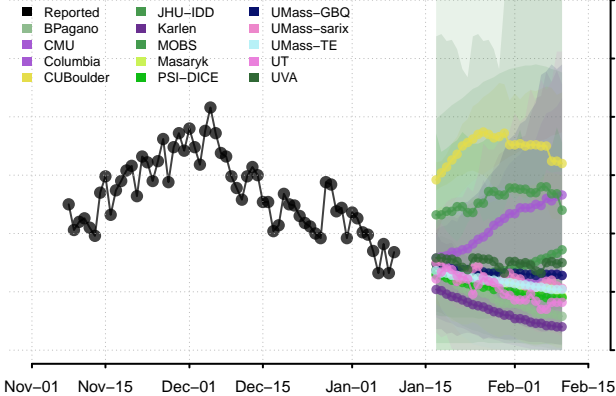
Alabama



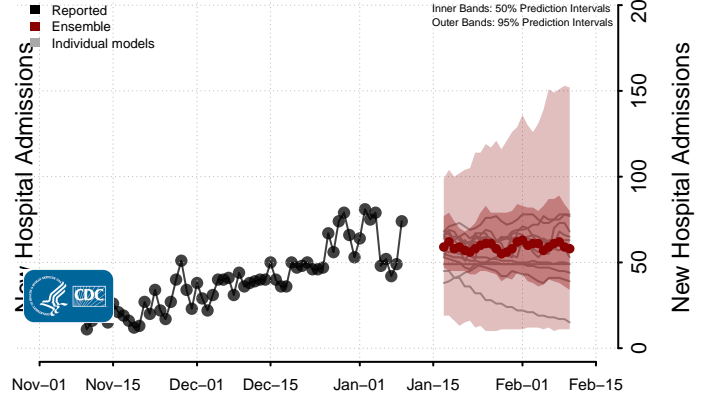
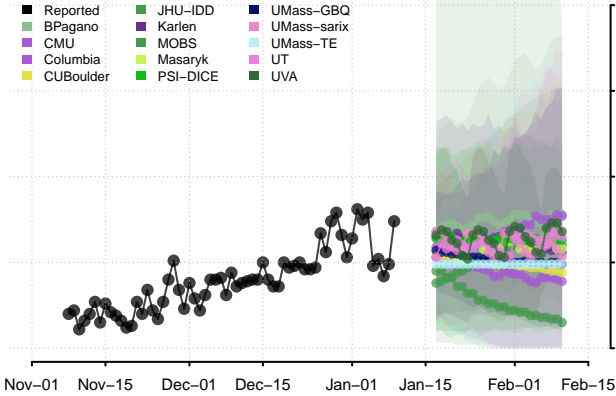
Alaska



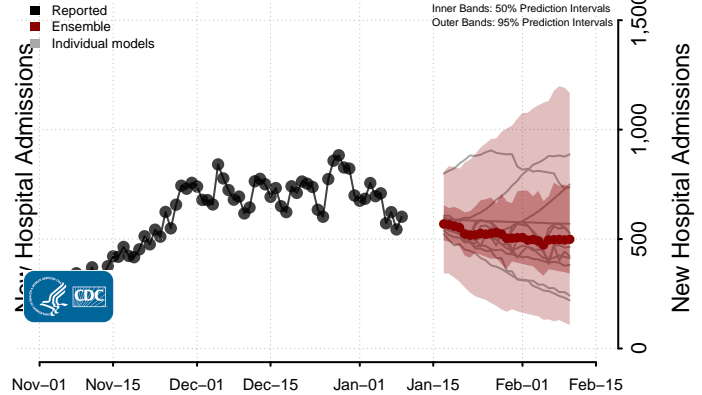
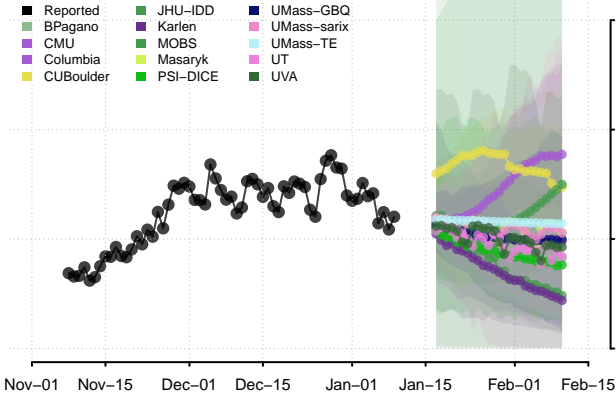
Arizona



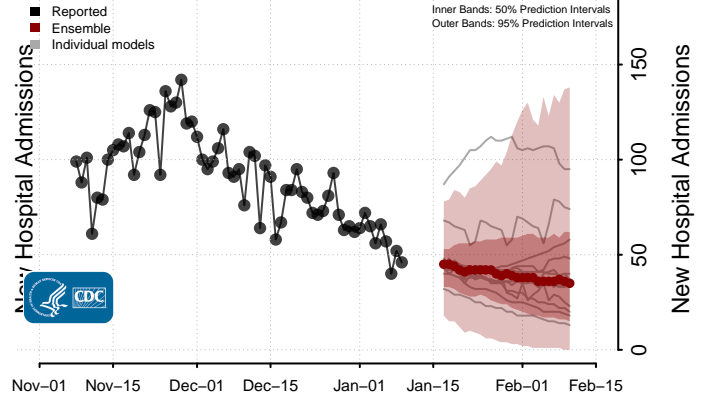
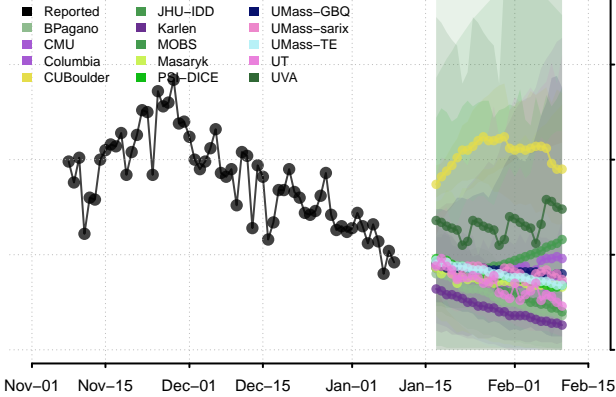
Arkansas



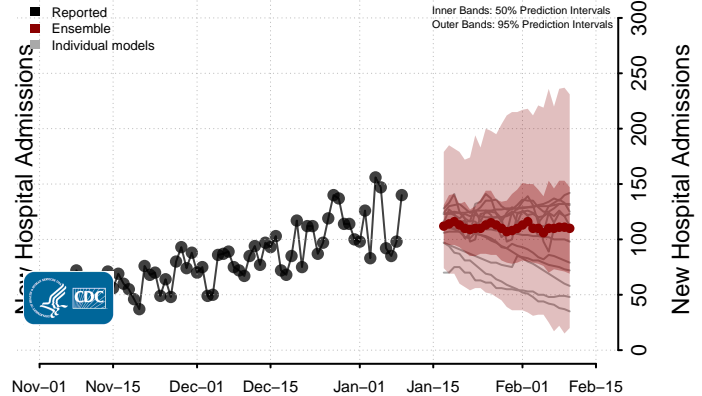
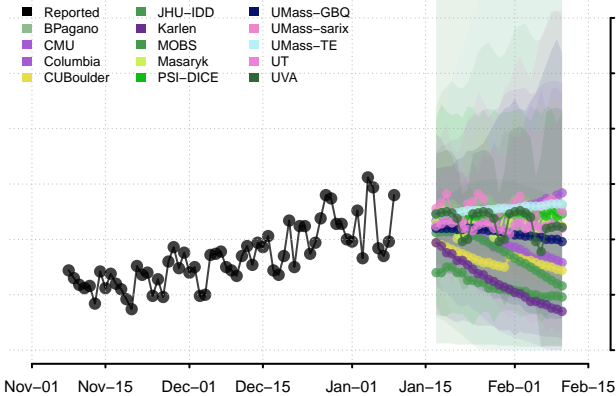
California



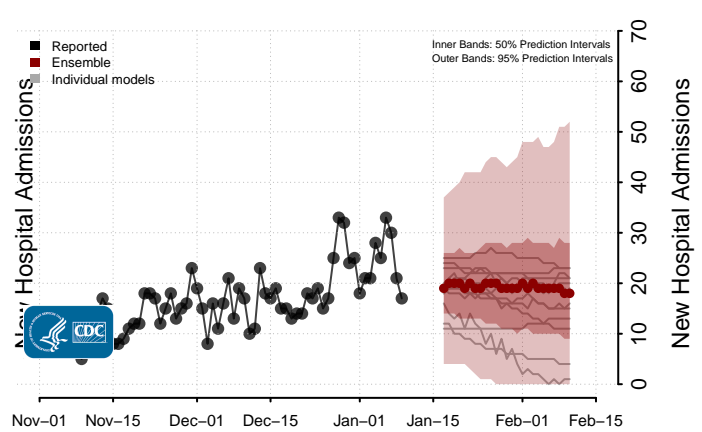
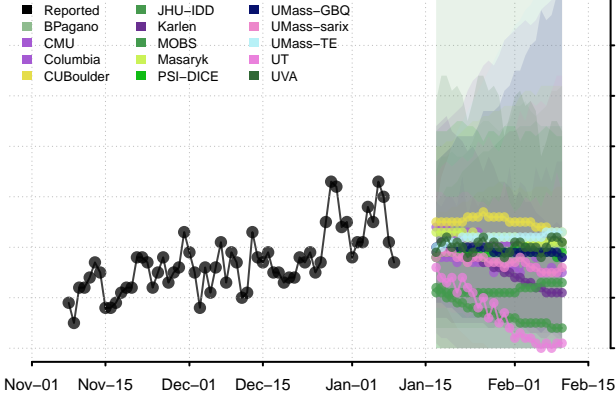
Colorado



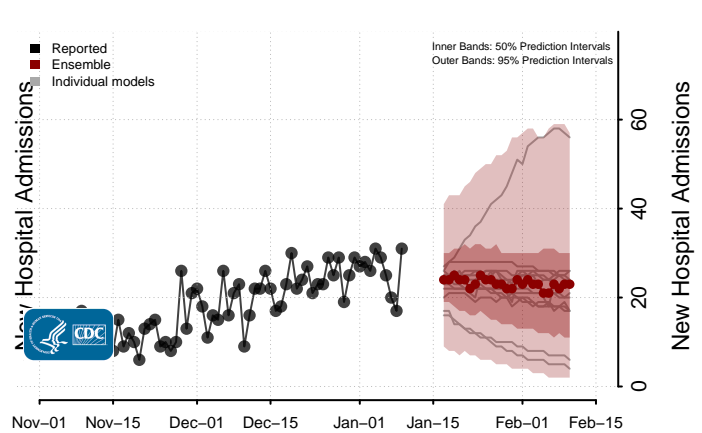
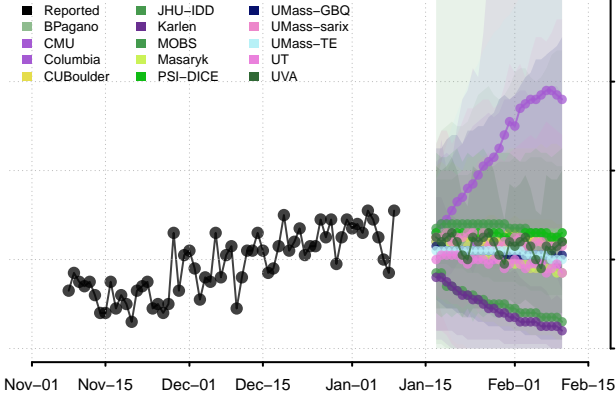
Connecticut



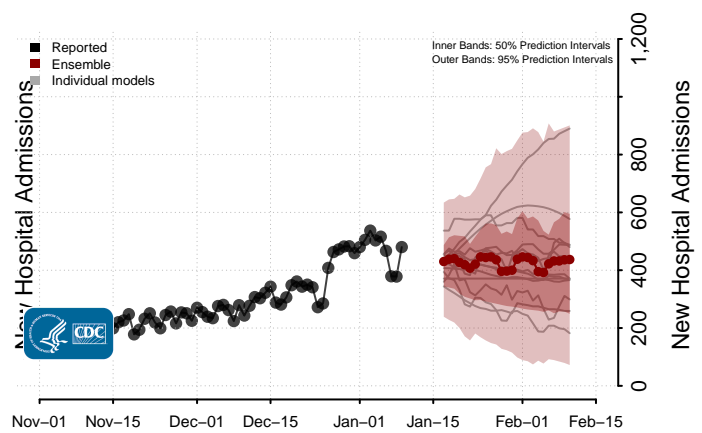
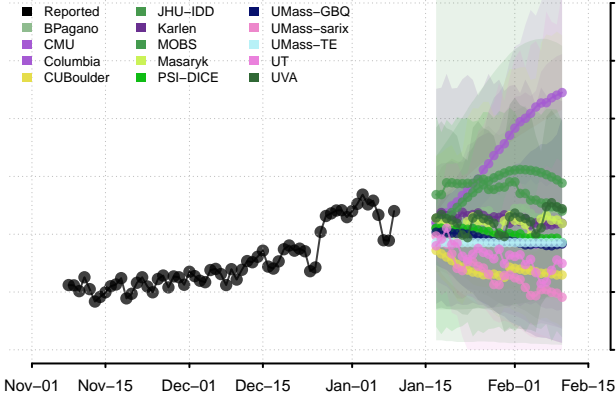
Delaware



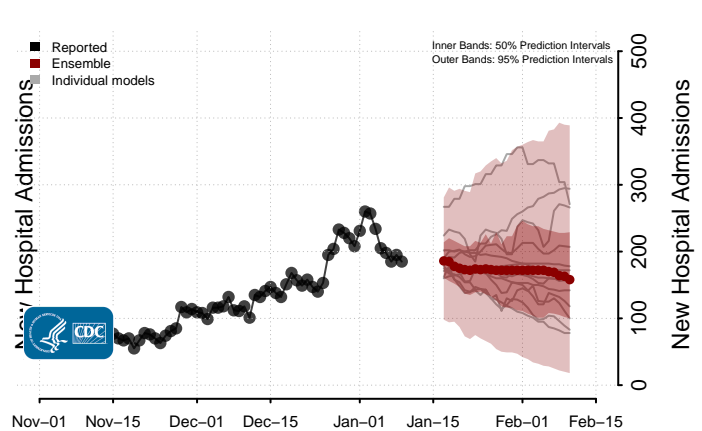
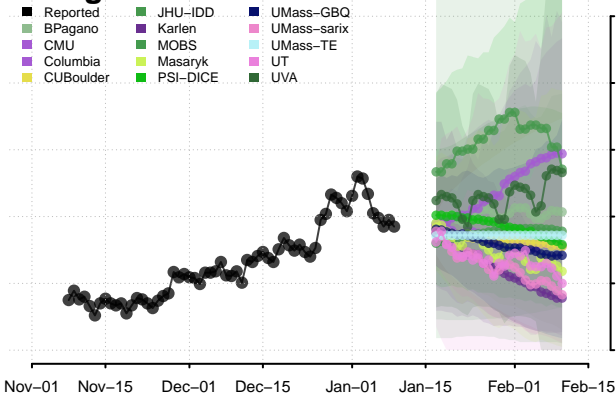
District of Columbia



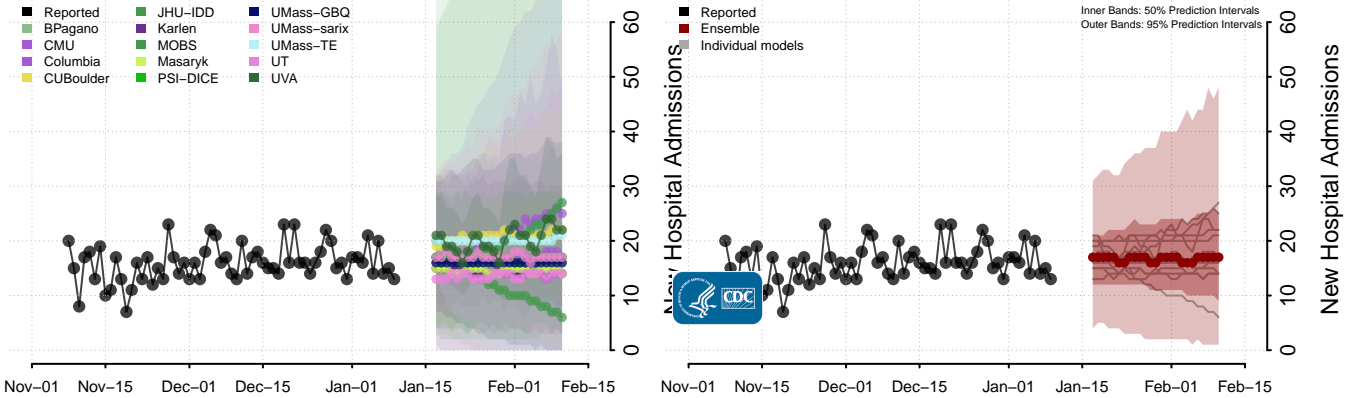
Florida



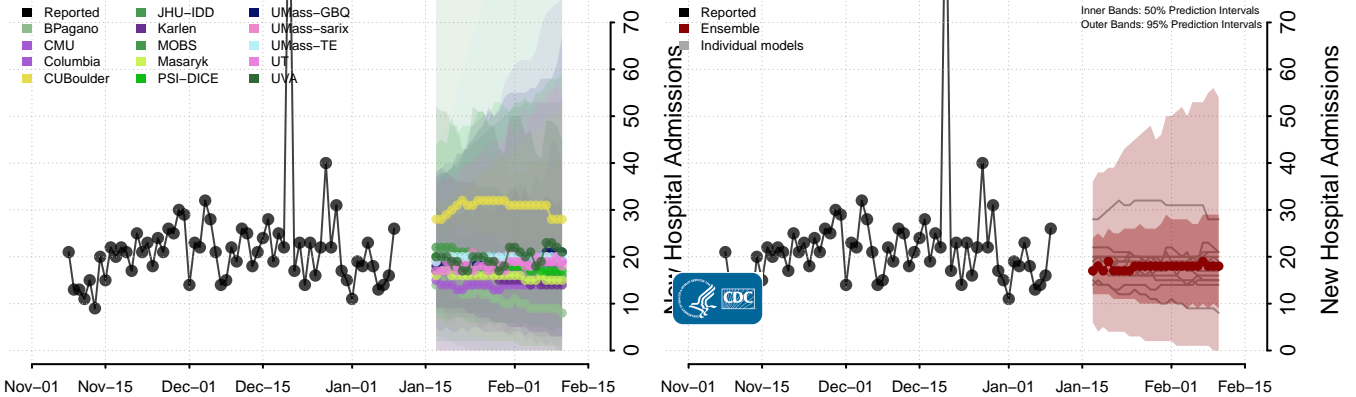
Georgia



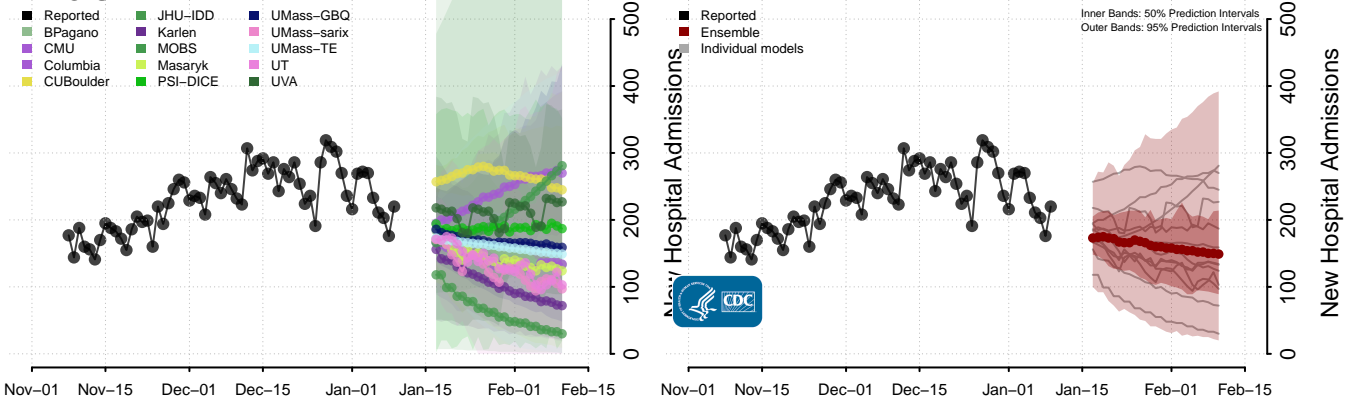
Hawaii



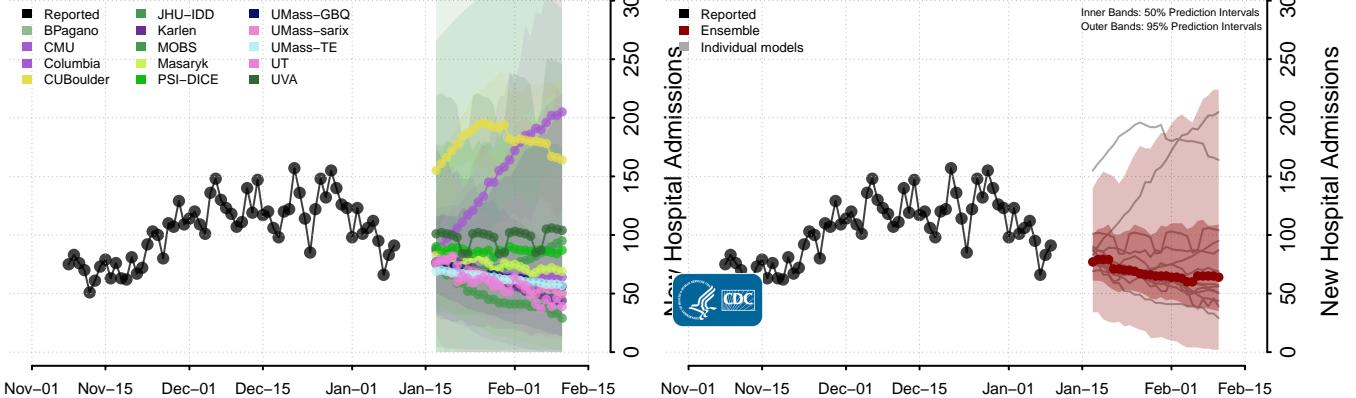
Idaho



Illinois*

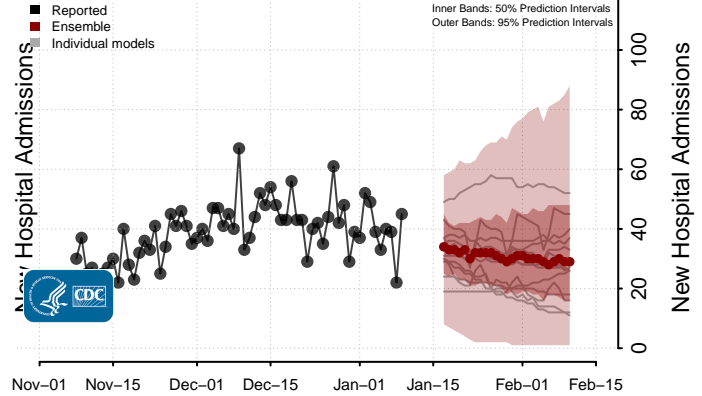
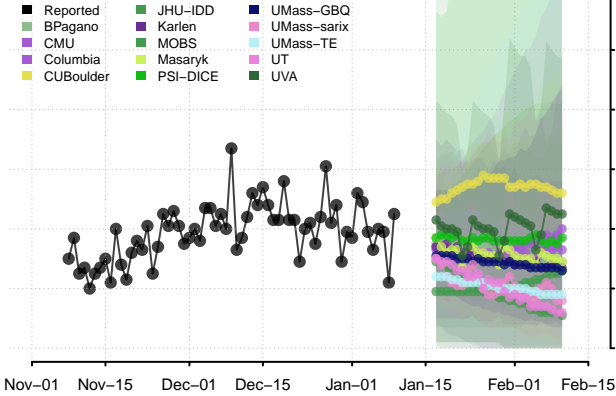


Indiana

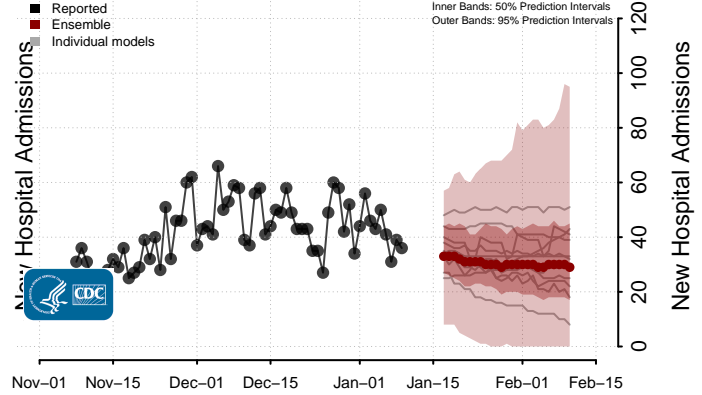
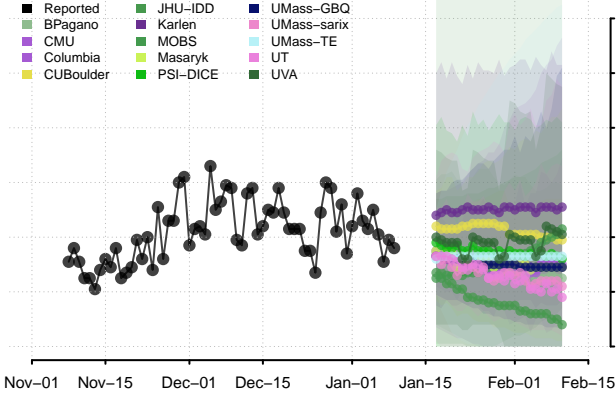


*New daily confirmed COVID-19 hospital admissions may decrease in this location over the next four weeks. For these locations, the ensemble forecast indicates a median daily probability of 0.75 or greater that fewer hospital admissions will be reported in the last seven days of the forecast than the median in the last seven days of reported data.

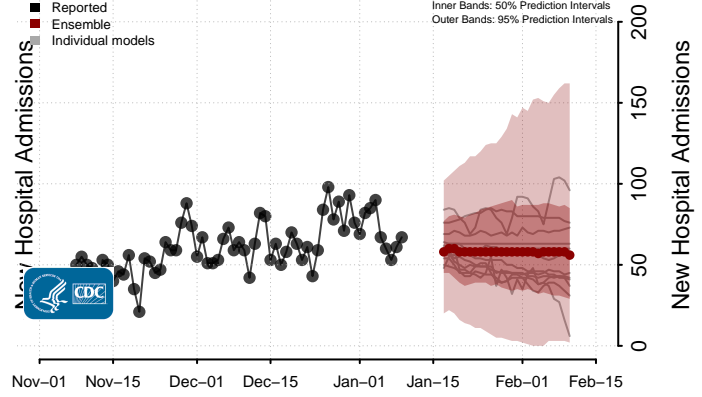
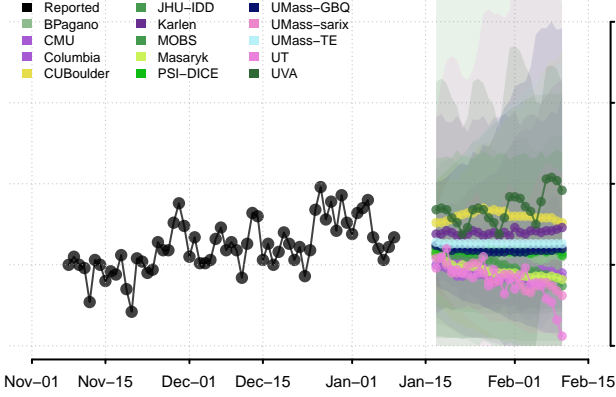
Iowa



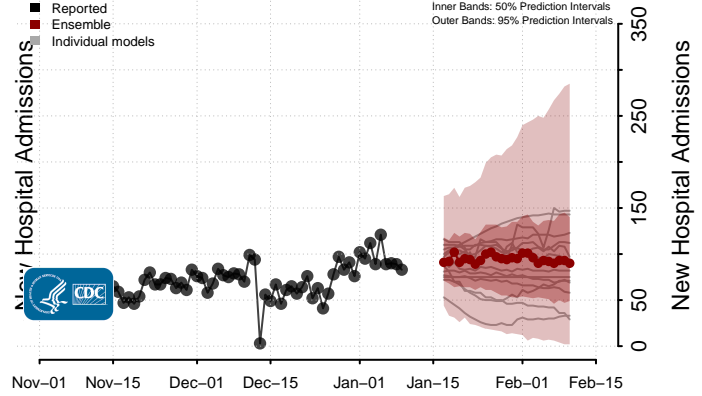
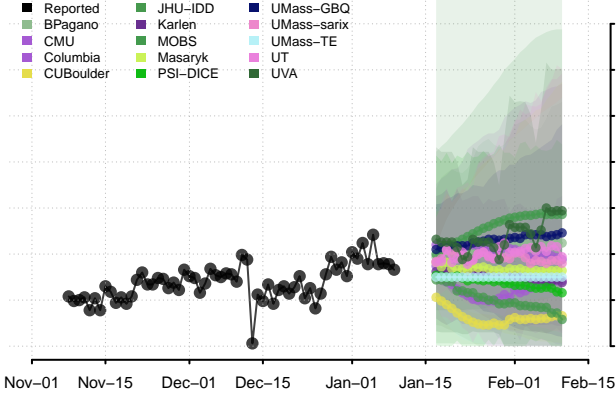
Kansas



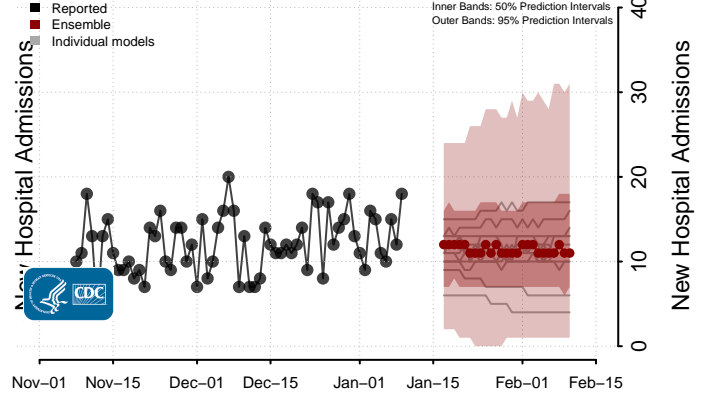
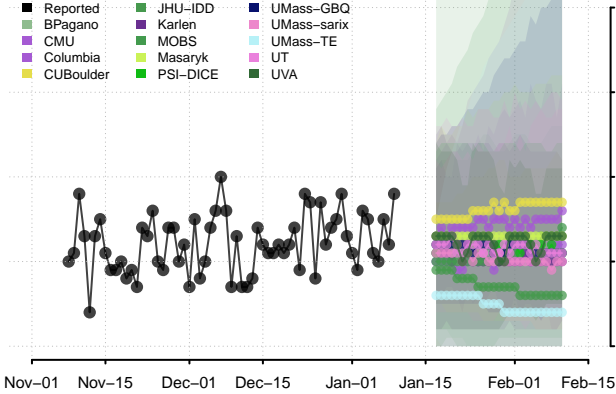
Kentucky



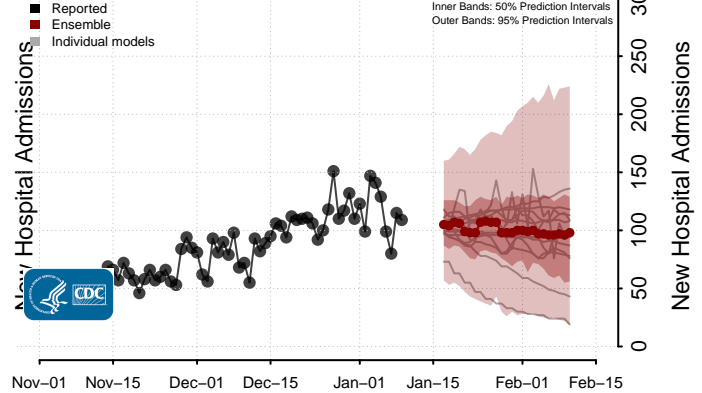
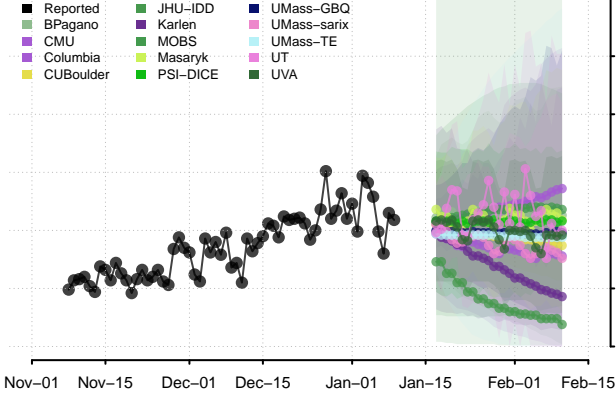
Louisiana



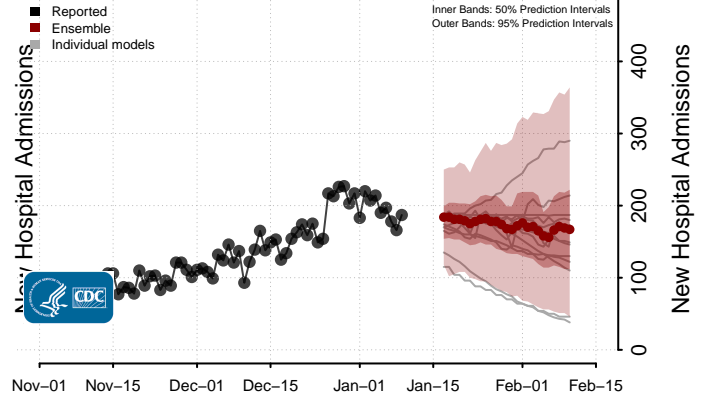
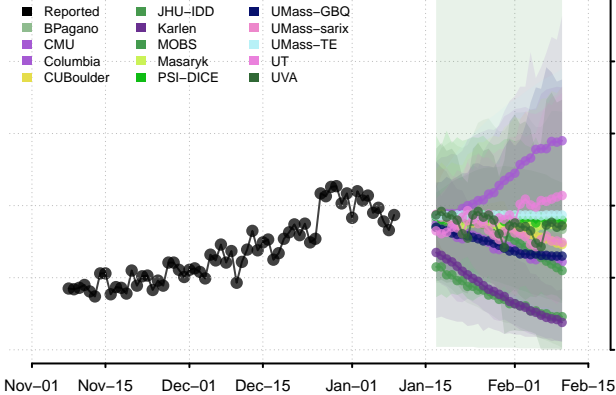
Maine



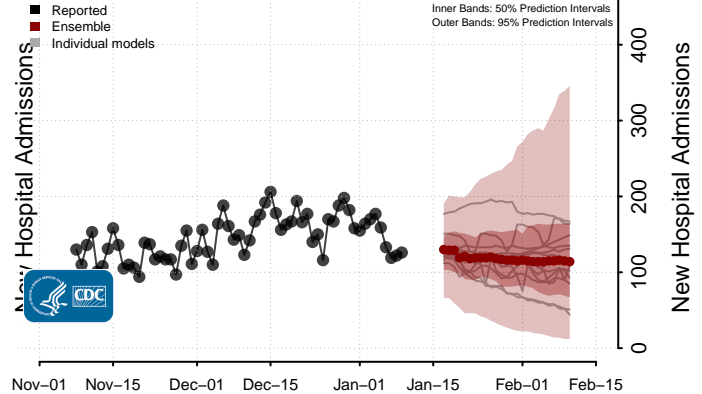
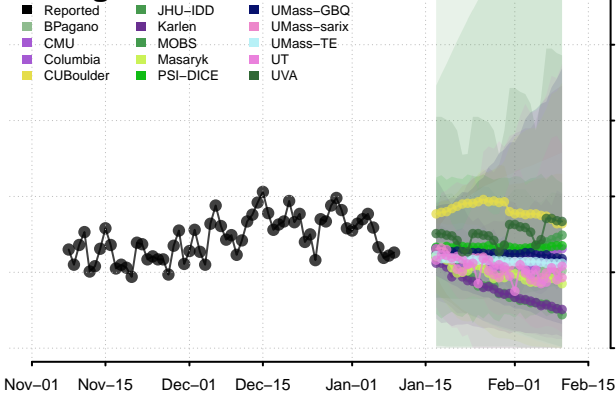
Maryland



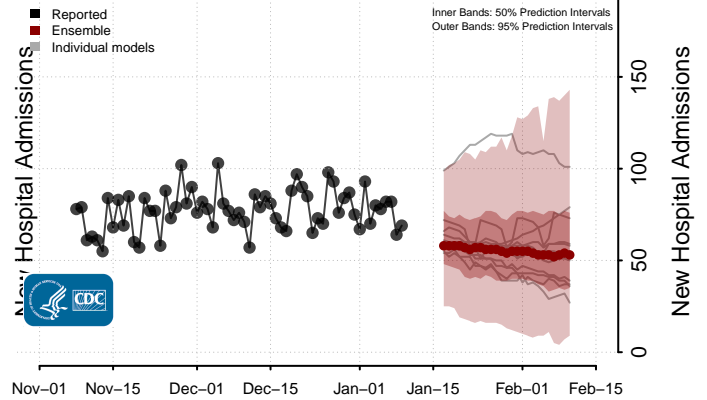
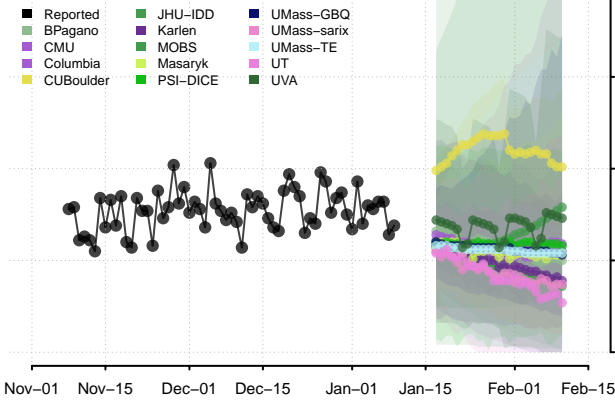
Massachusetts



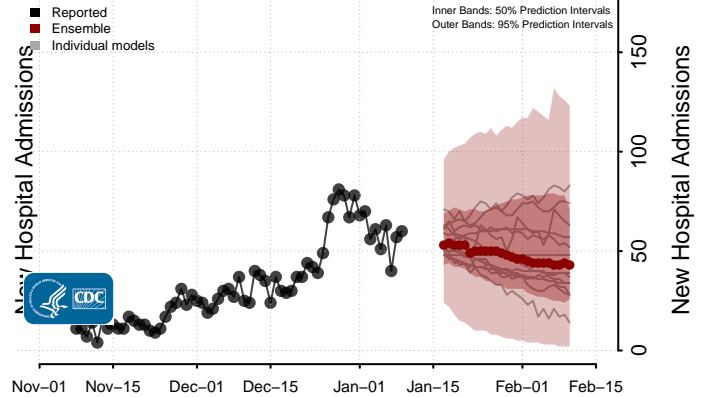
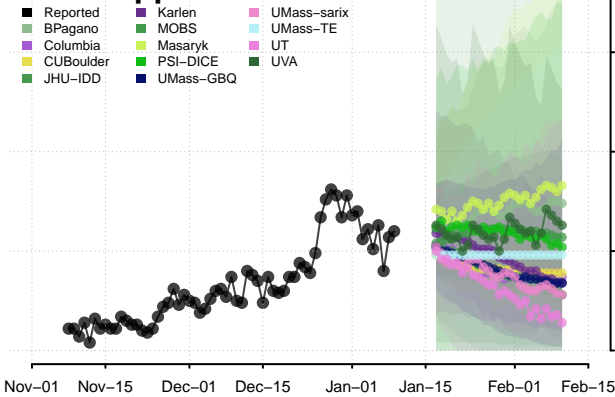
Michigan



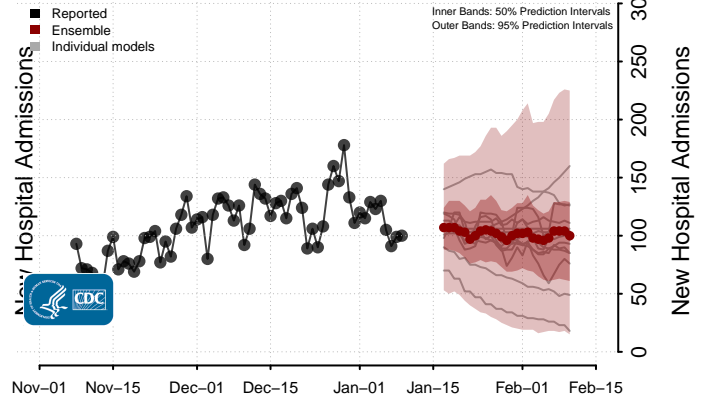
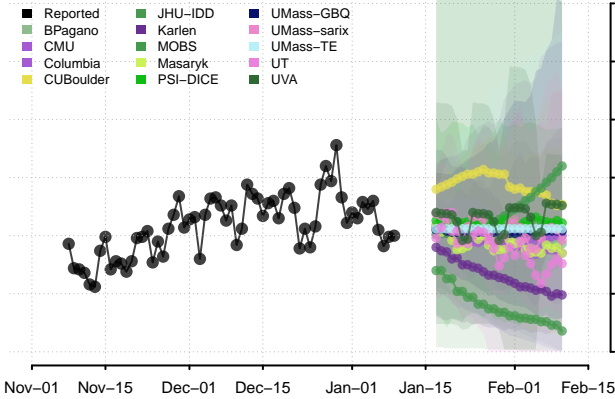
Minnesota*



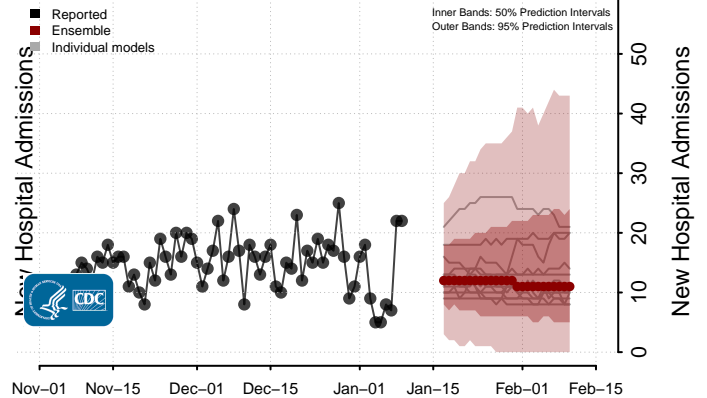
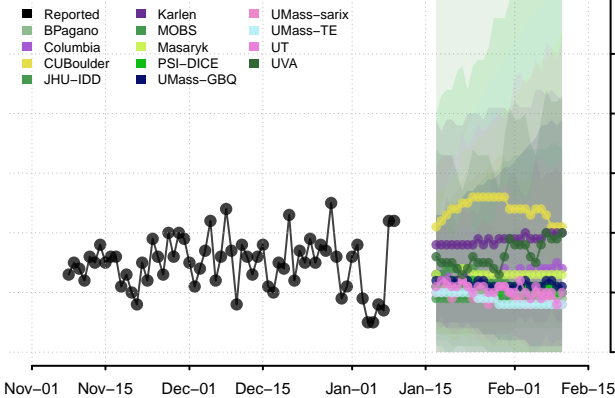
Mississippi



Missouri

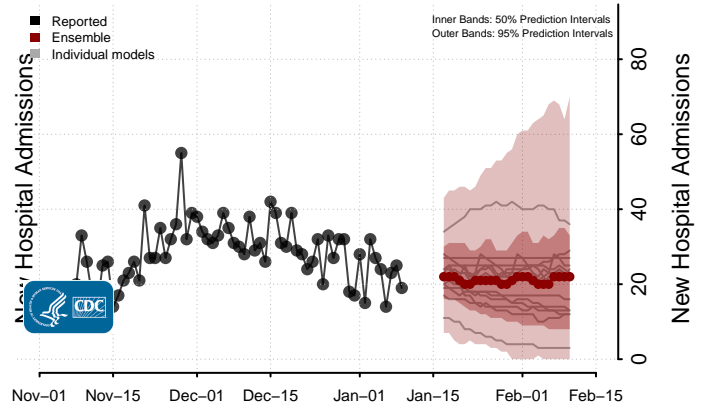
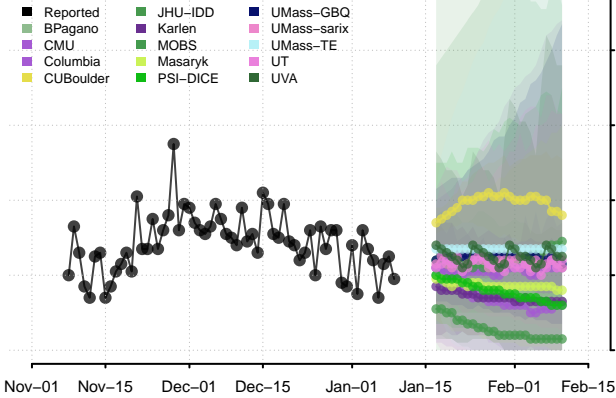


Montana

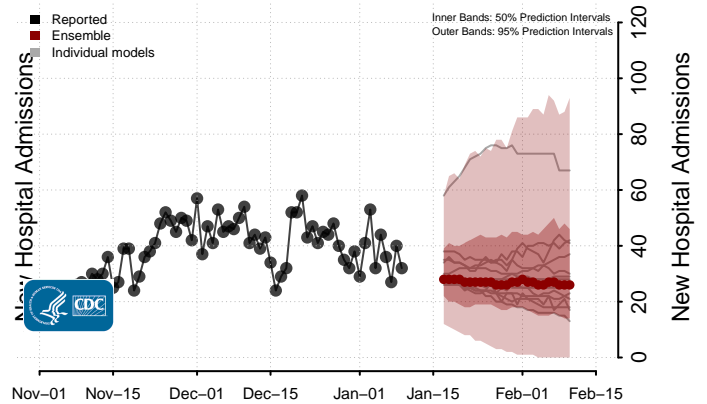
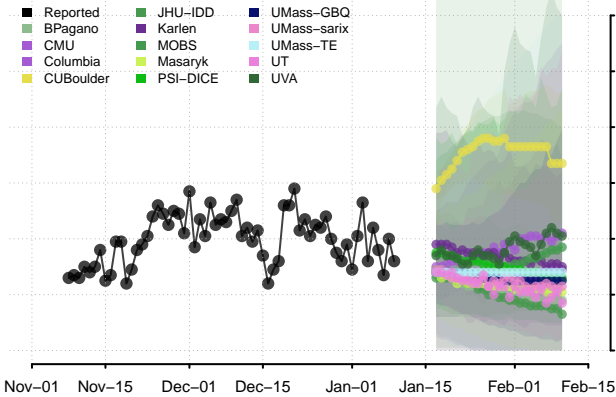


*New daily confirmed COVID-19 hospital admissions may decrease in this location over the next four weeks. For these locations, the ensemble forecast indicates a median daily probability of 0.75 or greater that fewer hospital admissions will be reported in the last seven days of the forecast than the median in the last seven days of reported data.

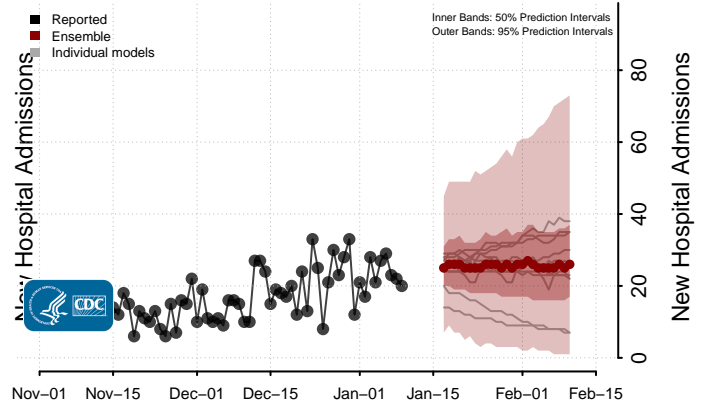
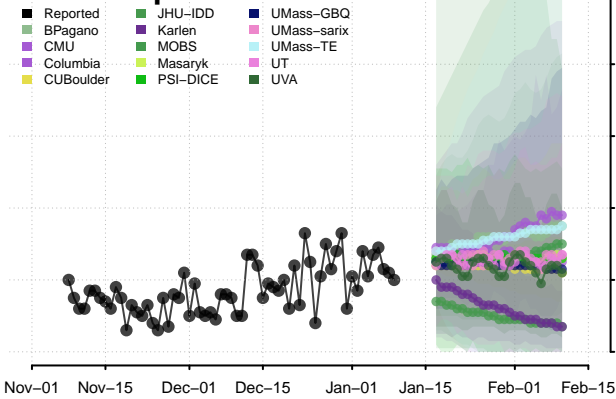
Nebraska



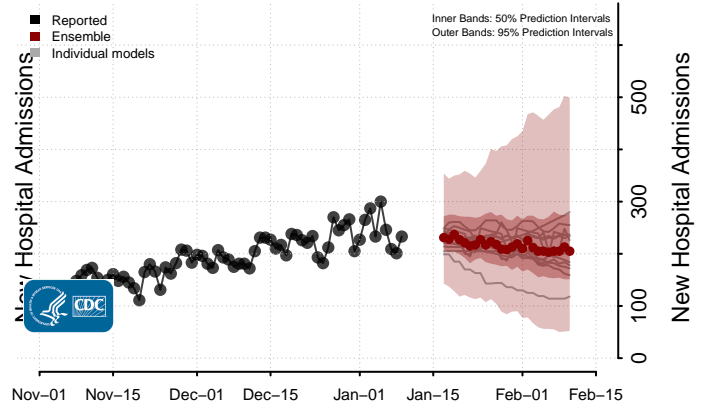
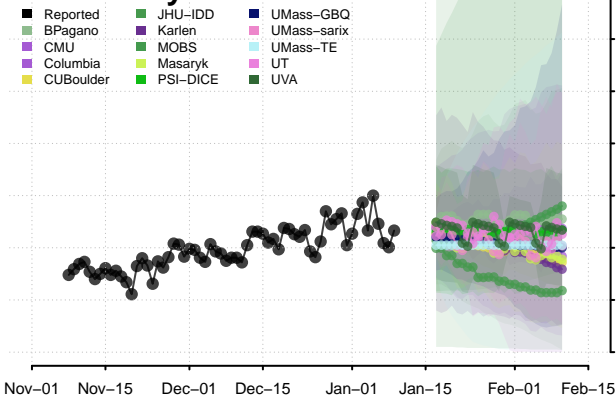
Nevada



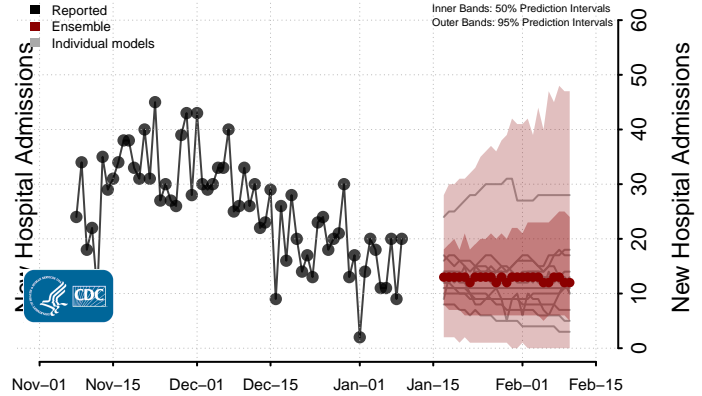
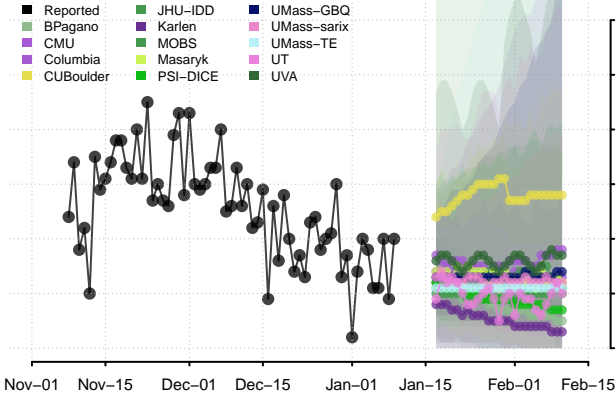
New Hampshire



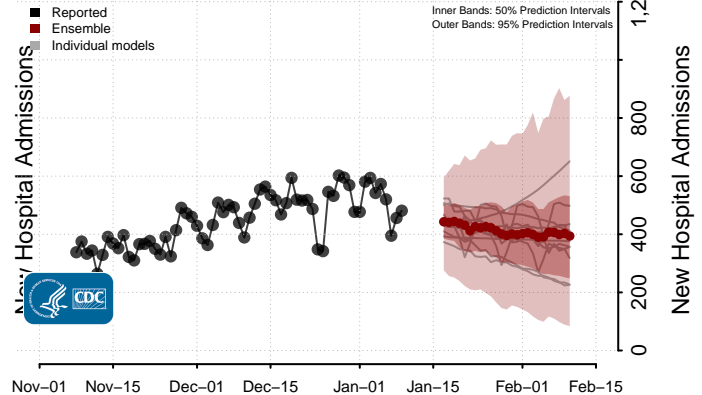
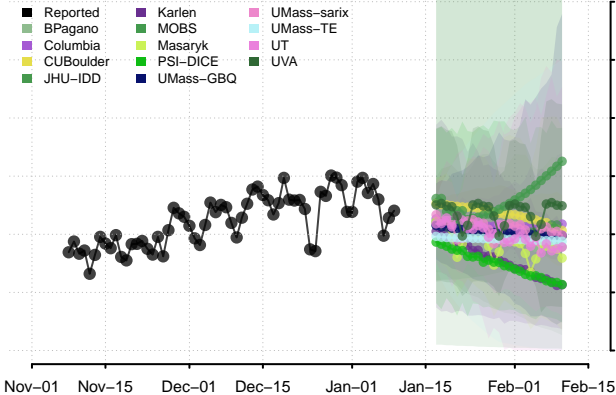
New Jersey



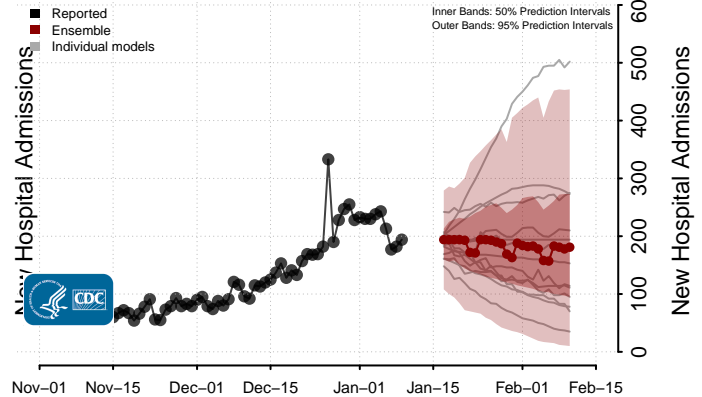
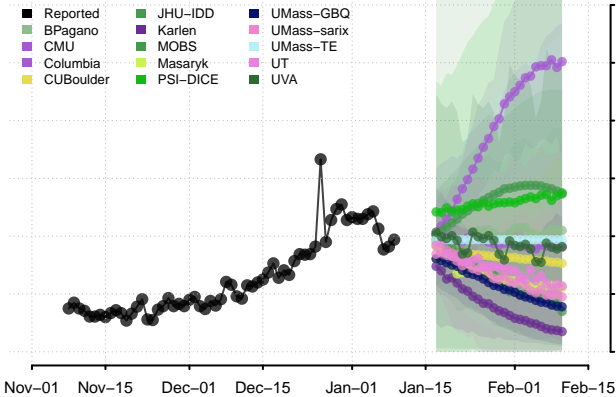
New Mexico



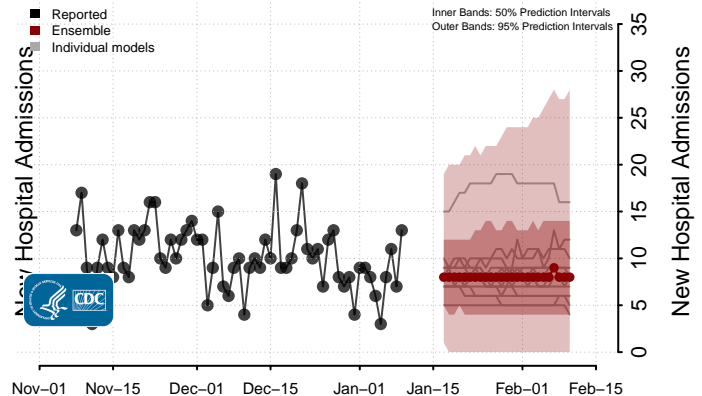
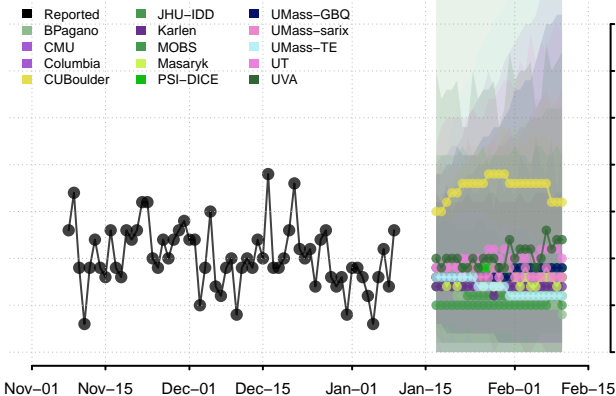
New York*



North Carolina

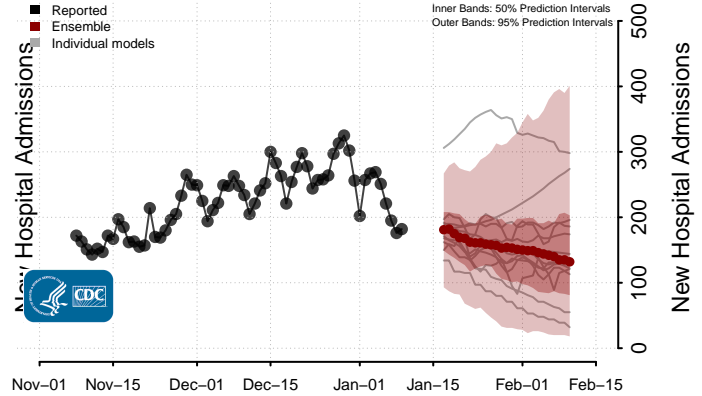
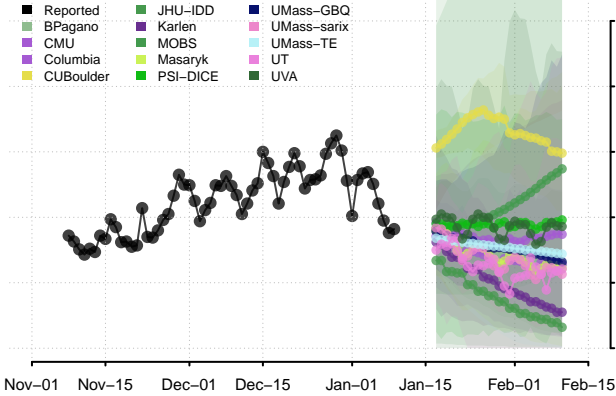


North Dakota

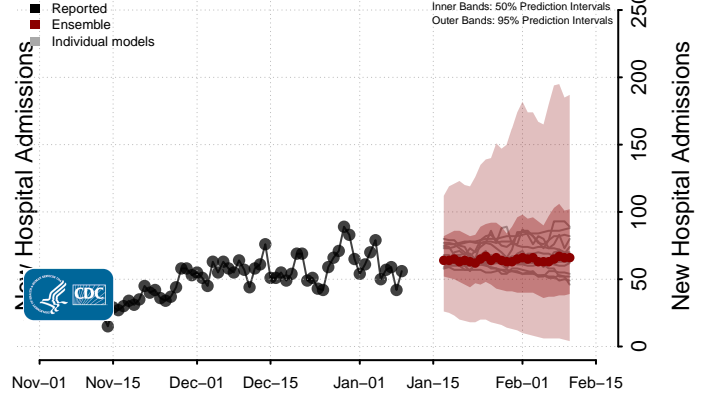
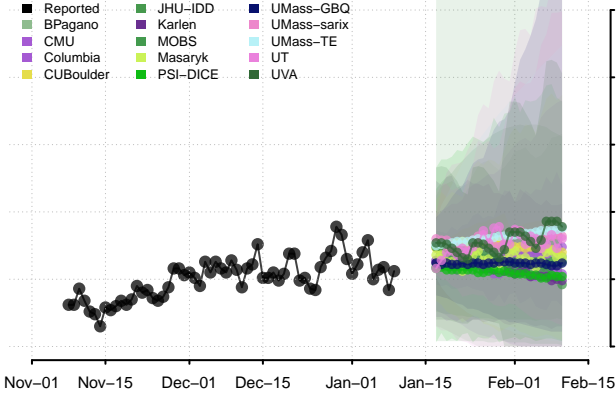


*New daily confirmed COVID-19 hospital admissions may decrease in this location over the next four weeks. For these locations, the ensemble forecast indicates a median daily probability of 0.75 or greater that fewer hospital admissions will be reported in the last seven days of the forecast than the median in the last seven days of reported data.

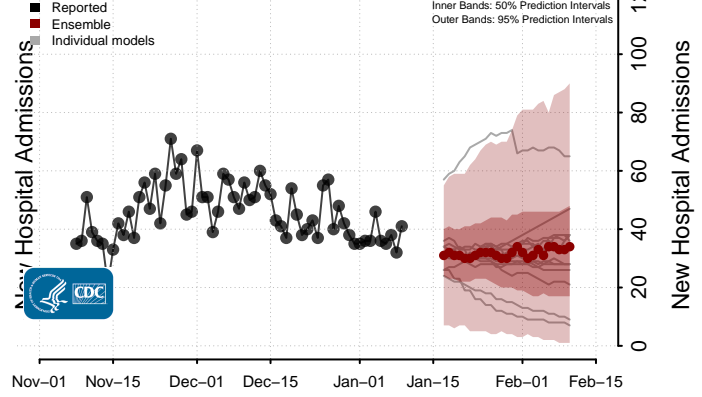
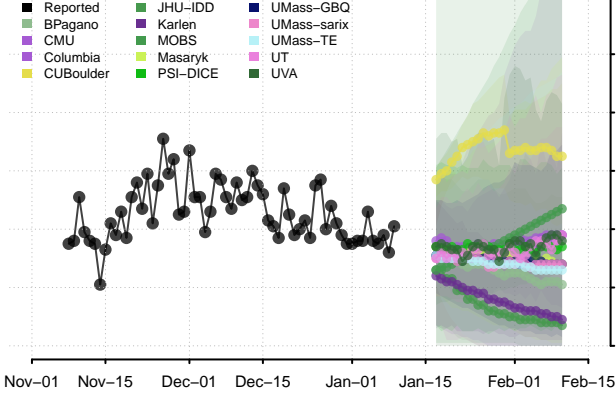
Ohio*



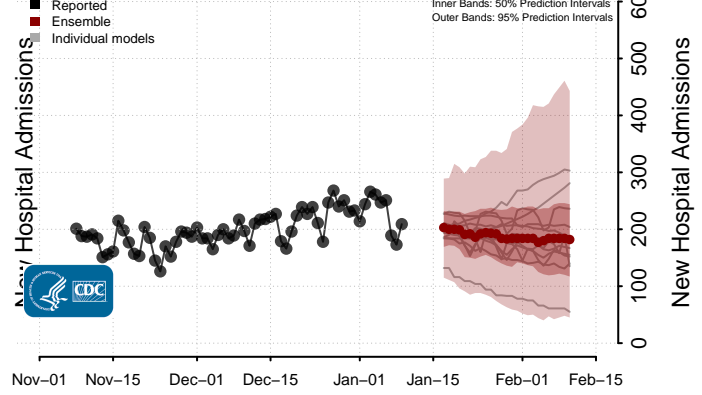
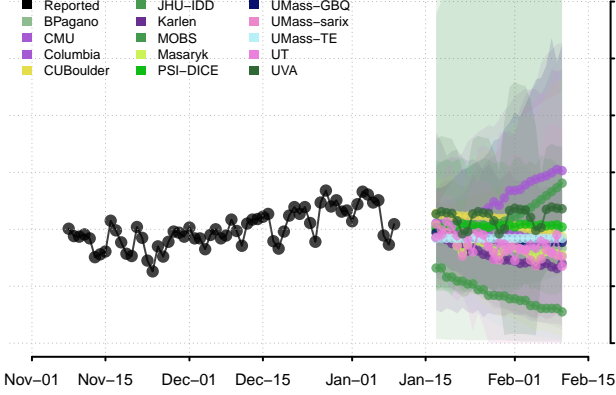
Oklahoma



Oregon

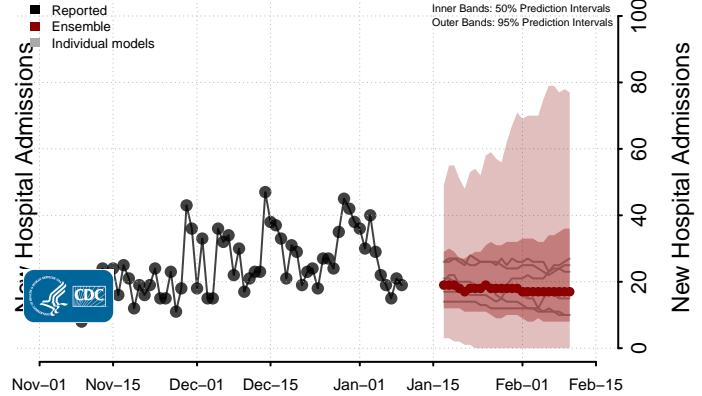
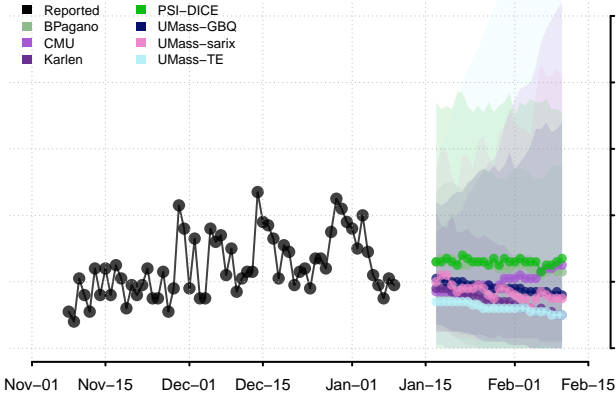


Pennsylvania*

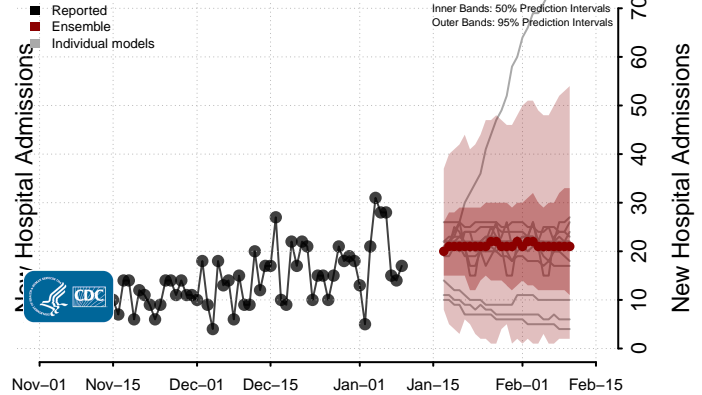
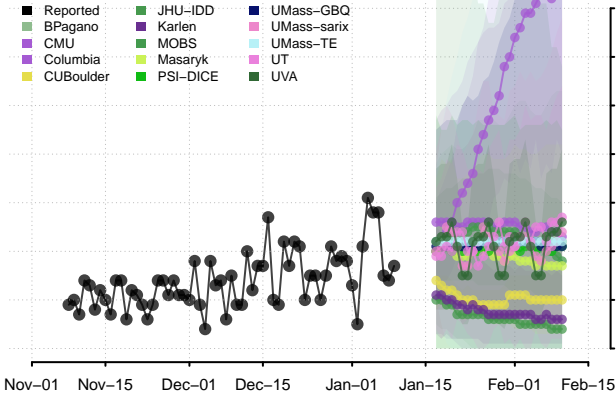


*New daily confirmed COVID-19 hospital admissions may decrease in this location over the next four weeks. For these locations, the ensemble forecast indicates a median daily probability of 0.75 or greater that fewer hospital admissions will be reported in the last seven days of the forecast than the median in the last seven days of reported data.

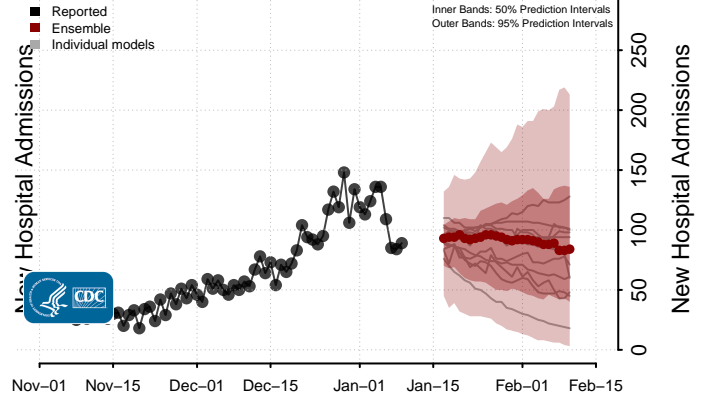
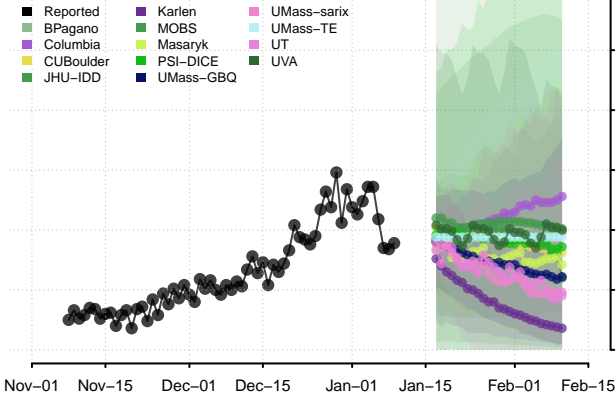
Puerto Rico



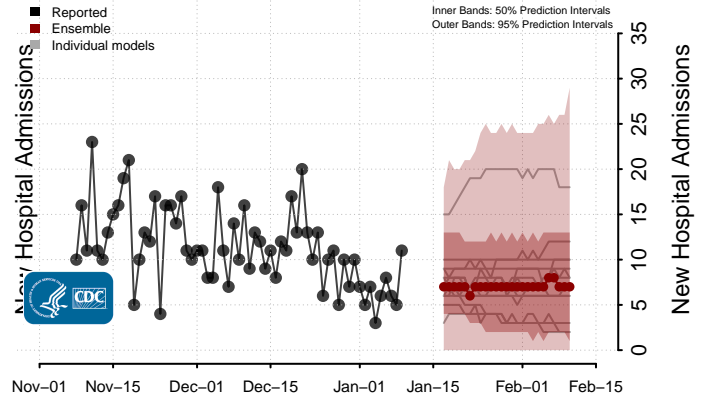
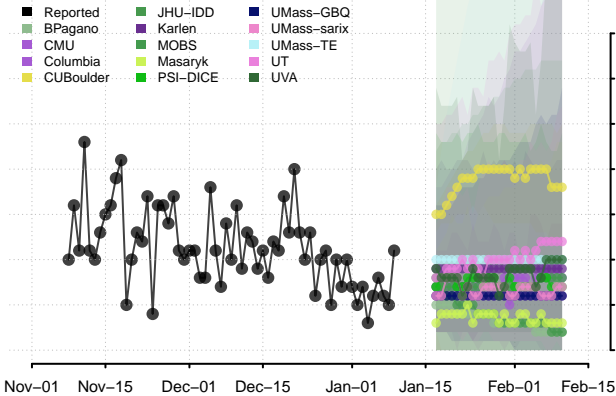
Rhode Island



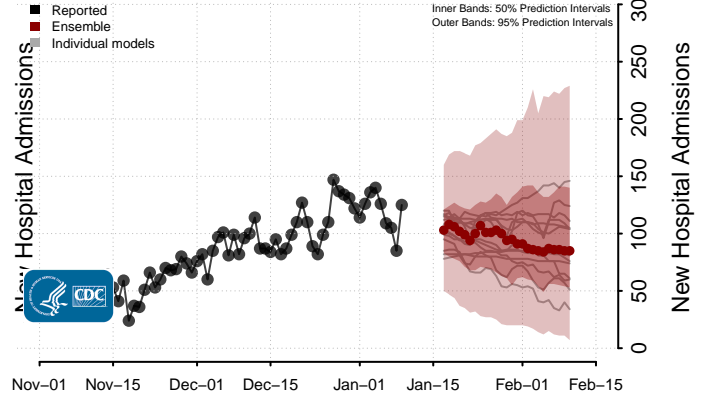
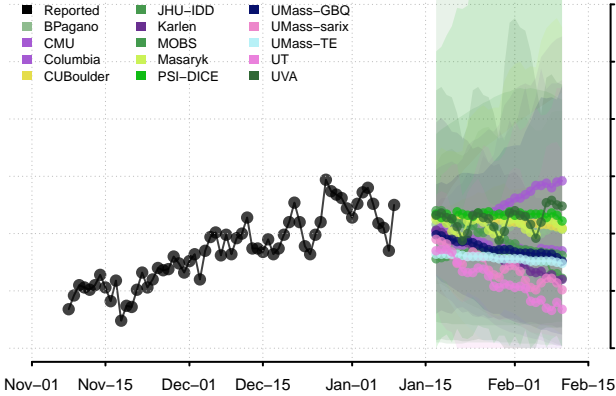
South Carolina



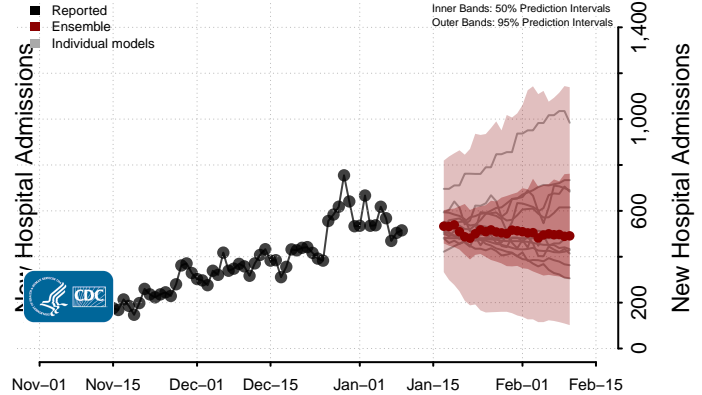
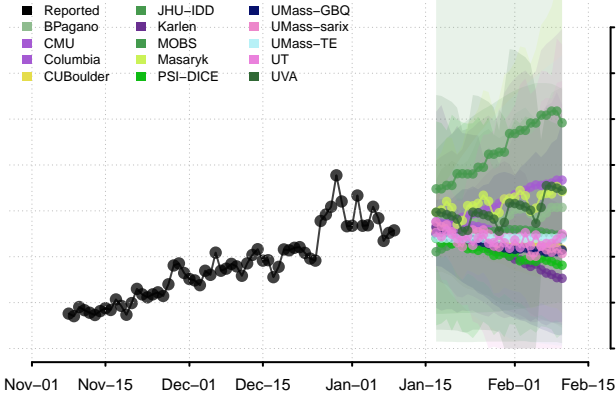
South Dakota



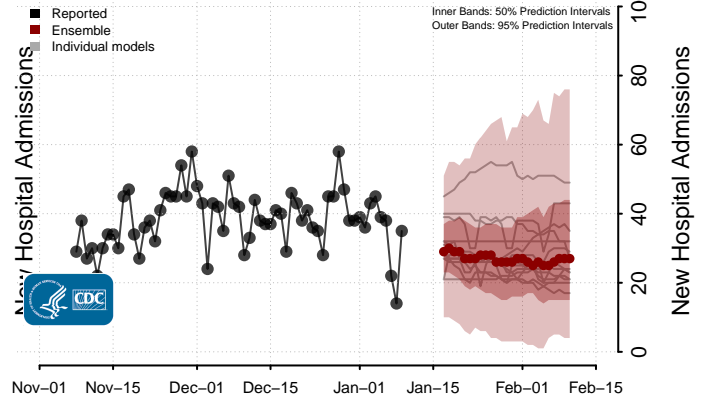
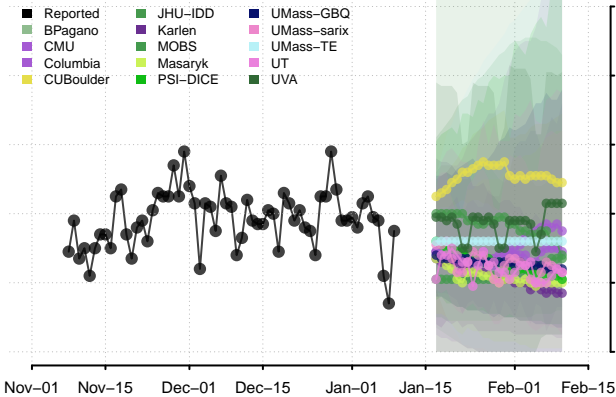
Tennessee



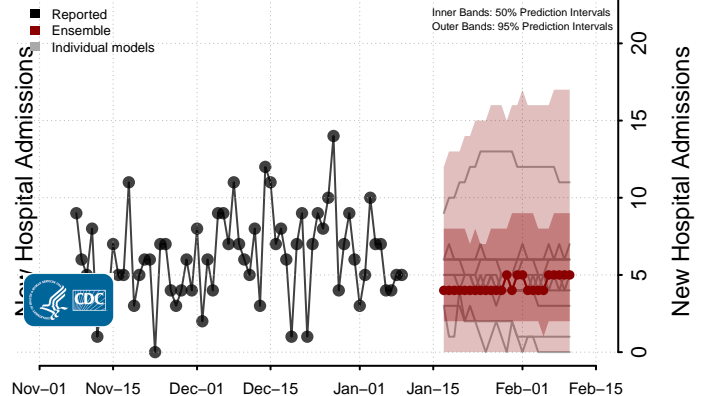
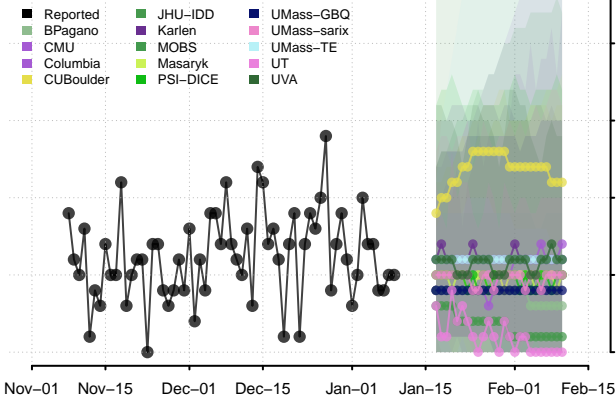
Texas



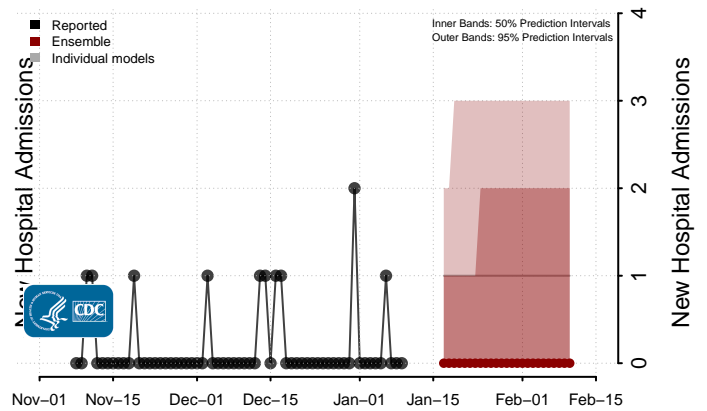
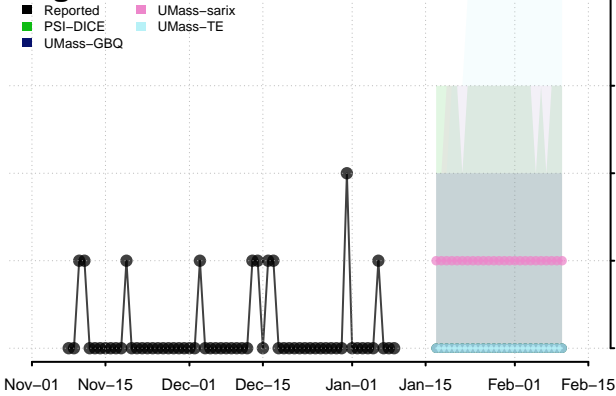
Utah



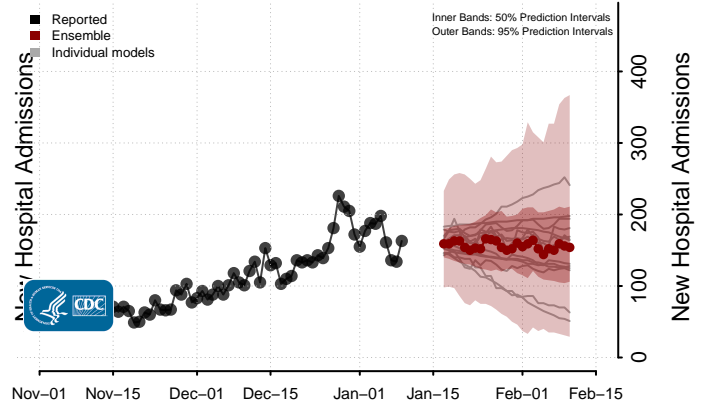
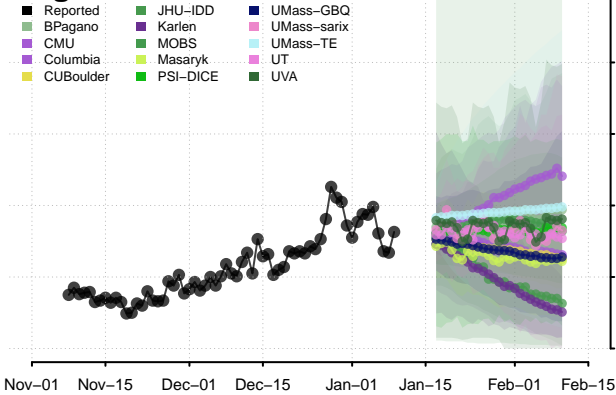
Vermont



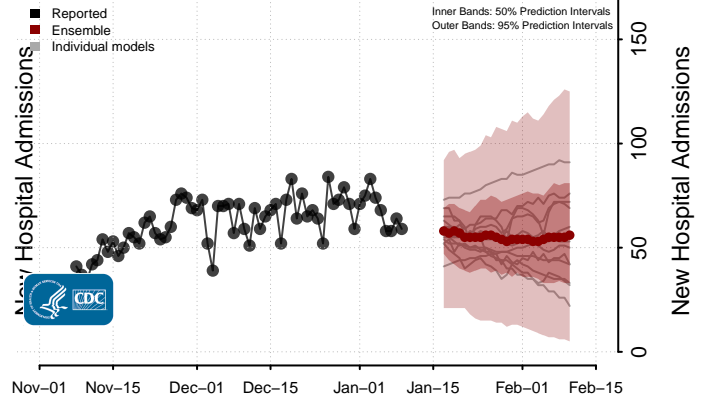
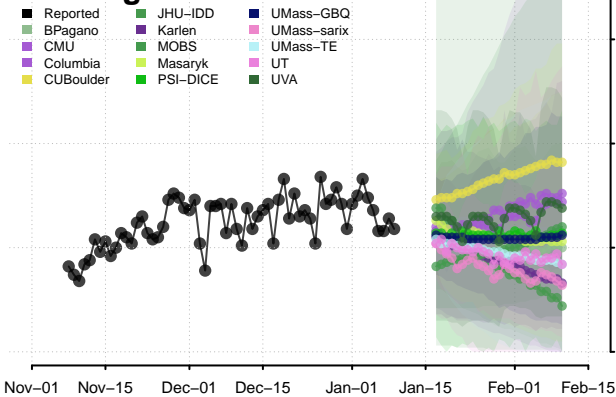
Virgin Islands



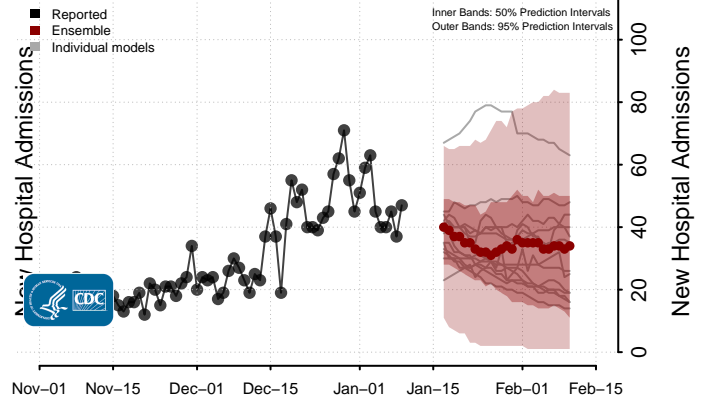
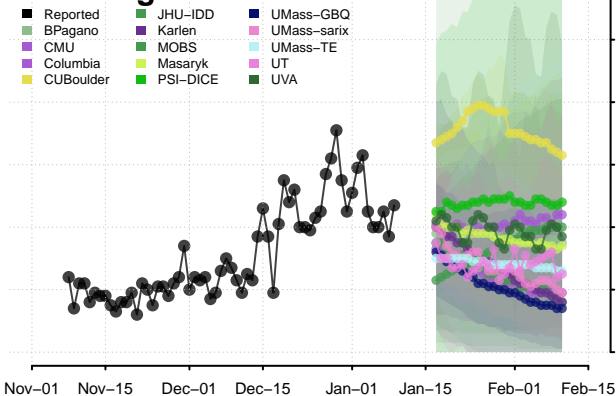
Virginia



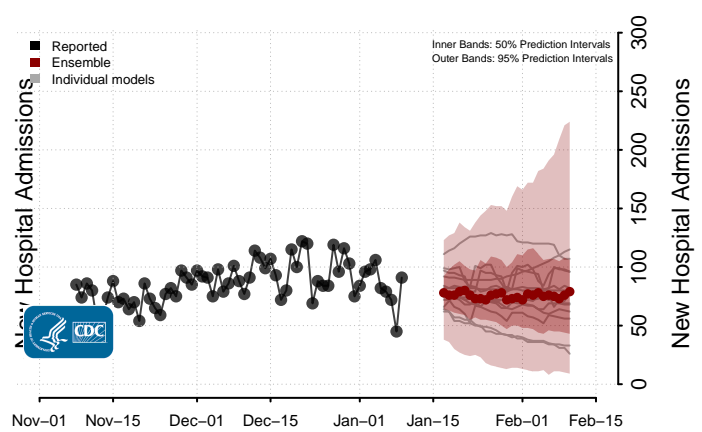
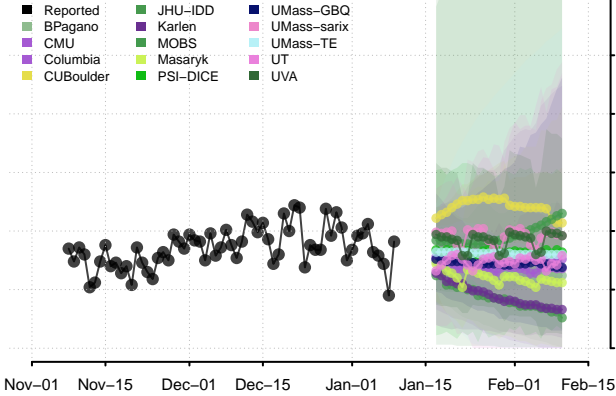
Washington



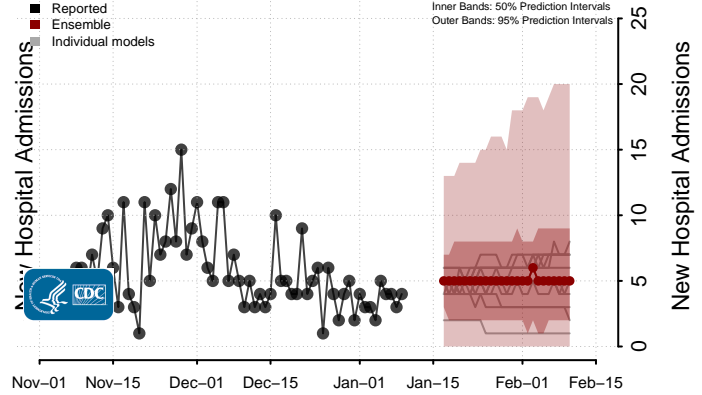
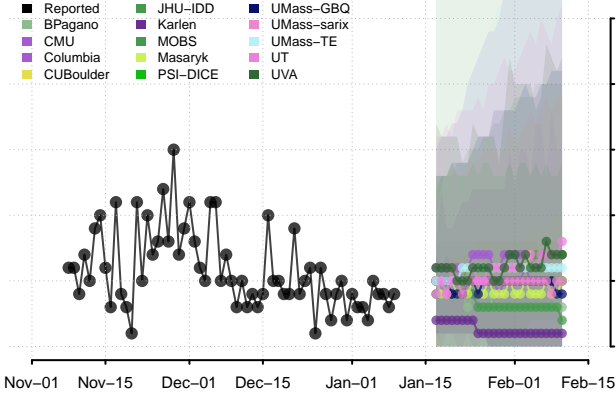
West Virginia



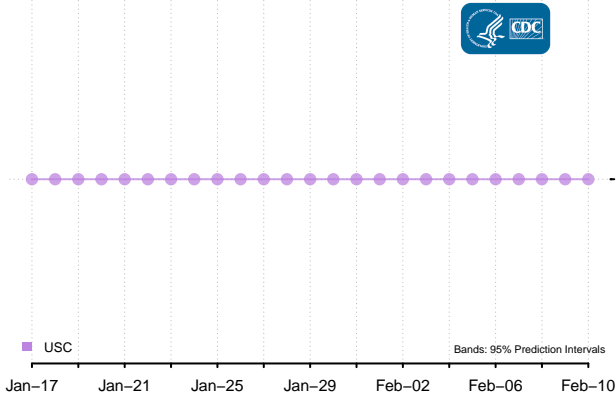
Wisconsin



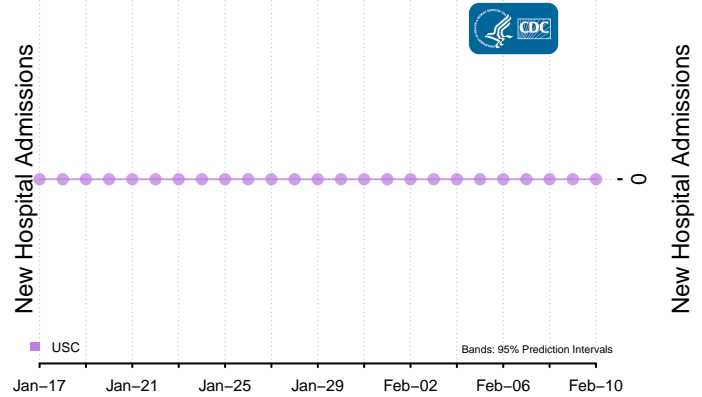
Wyoming



American Samoa***



Guam***



Northern Mariana Islands***

