

Angiostrongylus cantonensis in the Canary Islands (Spain): recent introduction or isolation effect? *Animals (Basel)*. 2021;11:1267. <https://doi.org/10.3390/ani11051267>

9. Paredes-Esquivel C, Sola J, Delgado-Serra S, Puig Riera M, Negre N, Miranda MA, et al. *Angiostrongylus cantonensis* in North African hedgehogs as vertebrate hosts, Mallorca, Spain, October 2018. *Euro Surveill*. 2019;24:1900489. <https://doi.org/10.2807/1560-7917.ES.2019.24.33.1900489>
10. Nguyen Y, Rossi B, Argy N, Baker C, Nickel B, Marti H, et al. Autochthonous case of eosinophilic meningitis caused by *Angiostrongylus cantonensis*, France, 2016. *Emerg Infect Dis*. 2017;23:1045–6. <https://doi.org/10.3201/eid2306.161999>

Address for correspondence: María Teresa Galán-Puchades, Department of Pharmacy, Pharmaceutical Technology and Parasitology, Faculty of Pharmacy, University of Valencia Av. Vicent Andrés Estellés s/n, 46100 Burjassot-Valencia, Spain; email: mteresa.galan@uv.es

Laboratory Features of Trichinellosis and Eosinophilia Threshold for Testing, Nunavik, Quebec, Canada, 2009–2019

Luke B. Harrison, Michael D. Libman, Chelsea Caya, Momar Ndao, Cedric P. Yansouni

Author affiliations: McGill University Health Centre, Montreal, Quebec, Canada (L.B. Harrison, M.D. Libman, C. Caya, C.P. Yansouni); National Reference Centre for Parasitology, Montreal (M. Ndao)

DOI: <https://doi.org/10.3201/eid2812.221144>

Prolonged eosinophilia is characteristic of trichinellosis. To determine the optimal eosinophil threshold for reflex *Trichinella* testing, we examined all 43 cases in Nunavik, Quebec, Canada, during 2009–2019. Using receiver operating characteristic analysis, we determined that eosinophil counts $\geq 0.8 \times 10^9$ cells/L should prompt consideration of trichinellosis and testing to rapidly identify potential outbreaks.

Trichinella nativa infection is associated with ingestion of parasitized sylvatic animals and periodic outbreaks among residents of northern Canada (1–3).

In the Arctic region of Nunavik in Quebec, outbreaks associated with polar bear and walrus consumption have prompted public health interventions, including a highly successful community-led active surveillance system that examines hunted meat for evidence of *Trichinella* encystment (4,5). We report a 10-year case series of *Trichinella* infection in Nunavik and describe the laboratory features. Eosinophilia is a well-characterized feature of infection that is readily available for most cases. We performed receiver operating characteristic (ROC) analysis to define an optimal threshold of eosinophilia to prompt reflex *Trichinella* antibody testing and rapid reporting to public health authorities for timely outbreak investigation (1–3).

In a retrospective test-negative case-control study, we reviewed laboratory and public health records to identify cases of trichinellosis in Nunavik that occurred from 2009 through 2019. Our study was approved by the Research Institute of the McGill University Health Centre Research and Ethics Board (REB #2020-5312).

We first reviewed all requests for *Trichinella* serologic testing sent from Quebec to the National Reference Centre for Parasitology, the only testing site for Quebec, during 2009–2019 (Appendix, <https://wwwnc.cdc.gov/EID/article/28/12/22-1144-App1.pdf>). To define an initial set of cases (with positive *Trichinella* serologic results), we selected specimens originating from Nunavik. One author (L.B.H.) reviewed the charts and confirmed cases if the clinical evolution was compatible with the positive serologic results. Because trichinellosis is notifiable by provincial law, we cross-referenced cases with the public health database to identify other cases determined epidemiologically and reviewed those charts. We defined a set of region-matched controls as those with negative *Trichinella* serologic results. Those controls are therefore persons from the general population, from the same region who had clinical manifestations that prompted testing for trichinellosis. Although serologic results early in the disease course could be negative, chart review of controls did not yield additional suspected cases on the basis of clinical evolution. We extracted available clinical and laboratory data by chart review at the McGill University Health Centre and at regional health centers in Nunavik. We calculated summary statistics and tests (*t*-test and χ^2), comparing cases and controls by using R (6), and generated ROC curves by using the pROC R package (7).

We identified 43 cases of trichinellosis and a set of 31 region-matched controls (Table). We excluded 4 possible case-patients with weakly positive serologic results but ambiguous clinical manifestations consistent with past infection. Information on signs and

Table. Characteristics of patients and controls in study of *Trichinella* infections in Nunavik, Quebec, Canada, 2009–2019*

Characteristic	Case-patients, n = 43	Controls, n = 31	Test statistic (95% CI)	p value
Demographics				
Mean age, y (range, SD)	39.1 (5–75, 16.1)	45.8 (0–80, 22.4)	$t = -1.48 (-15.59 \text{ to } 2.32)$	0.144
Female, no. (%)	30 (69.8)	16 (51.6)	$\chi^2 = 3.77$	0.052
Male, no. (%)	13 (30.2)	15 (48.4)		
Level of care received, no. with available information/total no. (%)				
Outpatient	18/27 (67)	15/24 (63)	NA	NA
Inpatient	9/27 (33)	9/24 (38)	NA	NA
Critical care	0/27	0/24	NA	NA
Evacuated to southern Quebec	7/27 (26)	8/24 (33)	NA	NA
Unknown	16/43 (37)	7/31 (23)	NA	NA
Positive <i>Trichinella</i> serologic result (OD ≥ 0.3), no. (%)	39 (91)‡	NA	NA	NA
Biochemical features during illness, mean, (range, SD)†				
Eosinophils, $\times 10^9$ cells/L	5.35 (0.80–17.40, 3.81)	0.80 (0–4.5, 1.00)	$t = 6.47 (3.14, 5.95)$	<0.001
Thrombocytes, $\times 10^9$ /L	545 (294–977, 169)	479 (208–1009, 210)	$t = 1.45 (-24.43, 154.90)$	0.151
Creatinine kinase, U/L	1562 (103–8081, 1511)	956 (28–6470, 1730)	$t = 1.42 (-245.92, 1458.90)$	0.160
C-reactive protein, mg/L	66.5 (8–191.7, 42.1)	66.6 (0.5–253.0, 82.9)	$t = -0.03 (-38.05, 36.83)$	0.974
Alanine aminotransferase, U/L	140.2 (21.0–541.0, 128.1)	85.1 (16.0–334.0, 75.6)	$t = 1.82 (-5.56, 115.91)$	0.074

*NA, not applicable; OD, optical density; t , Student t statistic.

†Maximum value recorded.

‡4 cases were determined epidemiologically, and initially negative serologic testing was not repeated.

symptoms was available for only 19/43 case-patients, but demographic, laboratory, and clinical outcomes were well documented.

Case-patients had a median age of 40 years and were mostly female (30/43, 69.8%), which may result from chance ($p = 0.052$), differential exposure to parasitized meat, food sharing, food preparation practices, or selection bias (8). When available, clinical features were similar to those previously described for trichinellosis (i.e., fever, rash and myalgia) (9). No patients died, and 9/27 (33%) patients with documented illness required hospitalization. Epidemiologic investigations revealed sporadic cases and 2 suspected point-source outbreaks (8). In 1 outbreak, seals were suspected as the source of infection, which could represent a change in epidemiology from previous outbreaks associated with polar bear and walrus meat and might reflect the surveillance program targeting game meat from the latter animals but not seals.

Laboratory information was available for 41/43 case-patients, a larger series of findings in *Trichinella* infection in Nunavik than previously reported. Features of *Trichinella* infection in Nunavik, presumptively caused by *T. nativa*, are similar to those reported for *T. spiralis* infection (9), including elevated creatinine kinase and eosinophilia (Table). The variable that differed most between cases and controls was peak absolute eosinophilia (5.35 vs. 0.80×10^9 cells/L; $p < 0.001$). Among case-patients, peak eosinophilia was noted early and declined over months; among

controls, counts were frequently elevated but stable over time (Appendix Figure). Using ROC analysis, we identified an absolute eosinophilia threshold of

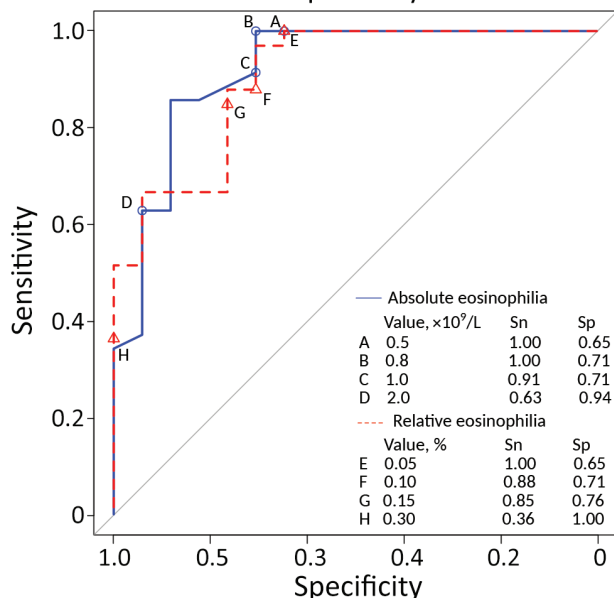


Figure. Receiver operating characteristic curve comparing performance of thresholds of absolute and relative eosinophilia to trigger automatic reporting of possible trichinellosis. Sn and Sp for the thresholds of absolute eosinophilia examined were 0.5×10^9 (Sn = 1.0, Sp = 0.65), 0.8×10^9 (Sn = 1.0, Sp = 0.71), 1.0×10^9 (Sn = 0.91, Sp = 0.71), 2.0×10^9 (Sn = 0.63, Sp = 0.94) and for relative eosinophilia were 5% (Sn = 1.0, Sp = 0.65), 10% (Sn = 0.88, Sp = 0.71), 15% (Sn = 0.85, Sp = 0.76), and 30% (Sn = 0.36, Sp = 1.0).

$\geq 0.8 \times 10^9$ cells/L, which identified all cases in this series with a specificity of 71% (Figure). We assessed the potential effect on resource use of this threshold by examining the region's whole-population distribution of absolute eosinophil counts. Among 8,562 persons who submitted a specimen for complete blood count for any reason from January 2019 through April 2022, a total of 287 had eosinophil counts that exceeded our threshold (86 [1.2%] specimens/year).

Automated flags and reflex testing in Nunavik now incorporate the threshold identified in our analysis. In the absence of a defined alternative diagnosis, eosinophil counts of $\geq 0.80 \times 10^9$ cells/L should prompt clinical consideration of trichinellosis and further investigation. Early identification of outbreaks is critical in this region—where hunted meat is shared widely within and among communities—to limit exposures and enable delivery of postexposure prophylactic anthelmintic therapy, which has evidence of effectiveness in this serious illness (1,4,10). The cost-benefit ratio of this threshold will require ongoing assessment.

Acknowledgments

We appreciate the collaboration of Nunavik Public Health, the National Reference Centre for Parasitology, and the staff of Inuulitsivik Health Centre, including members of medical records department.

This work was supported by a FRQ-S Clinician-Researcher Career Junior 2 award to C.P.Y.

About the Author

Dr. Harrison is chief resident in Infectious Diseases and Medical Microbiology at the McGill University Health Centre. His research interests include evolutionary biology.

References

- Schellenberg RS, Tan BJK, Irvine JD, Stockdale DR, Gajadhar AA, Serhir B, et al. An outbreak of trichinellosis due to consumption of bear meat infected with *Trichinella nativa*, in 2 northern Saskatchewan communities. *J Infect Dis*. 2003;188:835–43. <https://doi.org/10.1086/378094>
- Dalcin D, Zarlega DS, Larter NC, Hoberg E, Boucher DA, Merrifield S, et al. *Trichinella nativa* outbreak with rare thrombotic complications associated with meat from a black bear hunted in northern Ontario. *Clin Infect Dis*. 2017;64:1367–73. <https://doi.org/10.1093/cid/cix165>
- MacLean JD, Viallet J, Law C, Staudt M. Trichinosis in the Canadian Arctic: report of five outbreaks and a new clinical syndrome. *J Infect Dis*. 1989;160:513–20. <https://doi.org/10.1093/infdis/160.3.513>
- Proulx JF, MacLean JD, Gyorkos TW, Leclair D, Richter AK, Serhir B, et al. Novel prevention program for trichinellosis in Inuit communities. *Clin Infect Dis*. 2002;34:1508–14. <https://doi.org/10.1086/340342>
- Larrat S, Simard M, Lair S, Bélanger D, Proulx J-F. From science to action and from action to science: the Nunavik Trichinellosis Prevention Program. *Int J Circumpolar Health*. 2012;71:18595. <https://doi.org/10.3402/ijch.v71i0.18595>
- R Core Team. R: a language and environment for statistical computing. Version 4.1.3 [cited 2022 Apr 1]. <https://www.R-project.org>
- Robin X, Turck N, Hainard A, Tiberti N, Lisacek F, Sanchez J-C, et al. pROC: an open-source package for R and S+ to analyze and compare ROC curves. *BMC Bioinformatics*. 2011;12:77. <https://doi.org/10.1186/1471-2105-12-77>
- Ducrocq J, Proulx J-F, Simard M, Lévesque B, Iqaluk M, Elijassiapik L, et al. The unique contribution of a local response group in the field investigation and management of a trichinellosis outbreak in Nunavik (Québec, Canada). *Can J Public Heal*. 2020;111:31–9. <https://doi.org/10.17269/s41997-019-00255-8>
- Gottstein B, Pozio E, Nöckler K. Epidemiology, diagnosis, treatment, and control of trichinellosis. *Clin Microbiol Rev*. 2009;22:127–45. <https://doi.org/10.1128/CMR.00026-08>
- Faber M, Schink S, Mayer-Scholl S, Ziesch S, Schönfelder R, Wichmann-Schauer H, et al. Outbreak of trichinellosis due to wild boar meat and evaluation of the effectiveness of post exposure prophylaxis, Germany, 2013. *Clin Infect Dis*. 2015;60:e98-104.

Address for correspondence: Luke B. Harrison, McGill University Health Centre, Rm E5.1815, 1001 Blvd Decarie, Montreal, QC H4A 3J1, Canada; email: luke.harrison@mail.mcgill.ca

Dirofilaria repens Testicular Infection in Child, Italy

Sara Ugolini, Mario Lima, Michela Maffi, Francesco Pierangeli, Marzia Vastano, Tommaso Gargano, Stefania Varani, Andrea Gustinelli, Monica Caffara, Maria L. Fioravanti

Author affiliations: Wythenshawe Hospital, Manchester, UK (S. Ugolini); University of Manchester NHS Foundation Trust, Manchester (S. Ugolini); IRCCS Azienda Ospedaliero-Universitaria di Bologna, Bologna, Italy (M. Lima, M. Maffi, M. Vastano, T. Gargano, S. Varani); Ospedali Riuniti di Ancona, Ancona, Italy (F. Pierangeli); Alma Mater Studiorum-University of Bologna, Bologna (M. Lima, T. Gargano, S. Varani, A. Gustinelli, M. Caffara, M.L. Fioravanti)

DOI: <https://doi.org/10.3201/eid2812.220424>