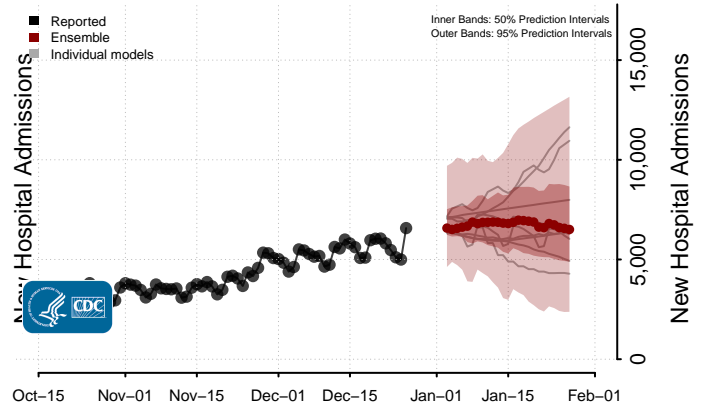
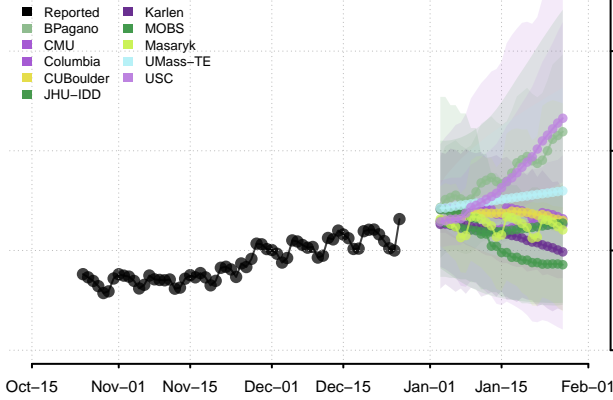
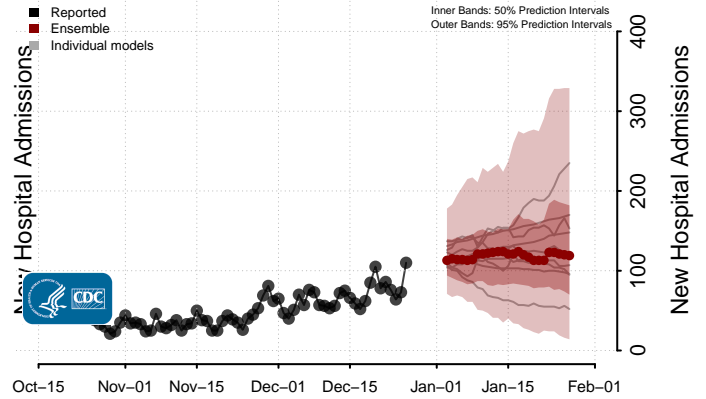
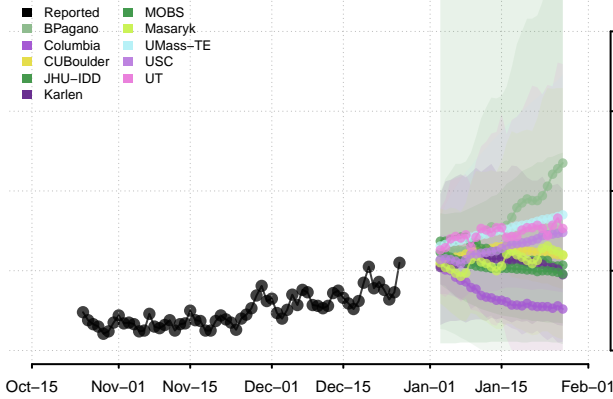


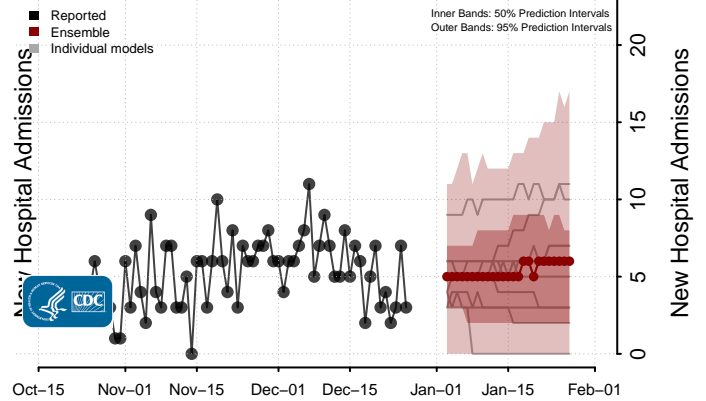
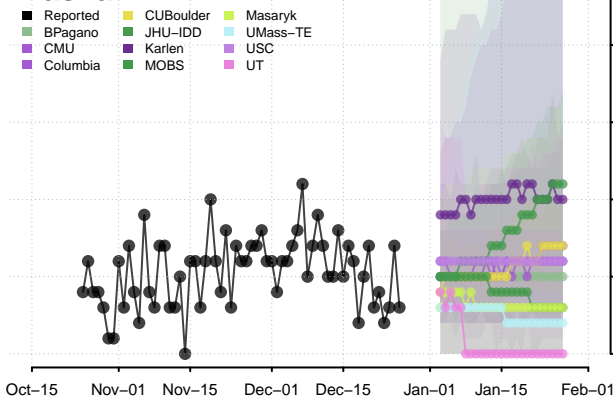
National



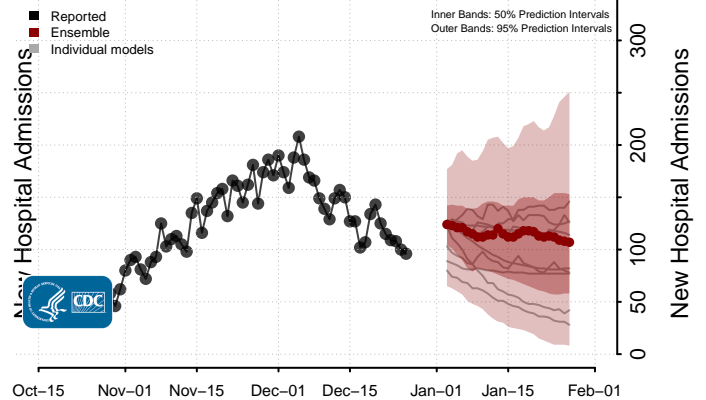
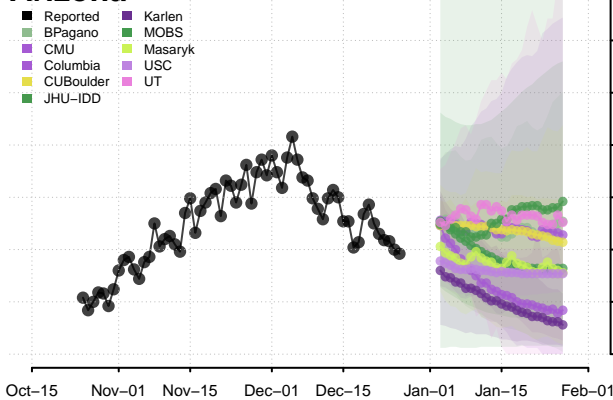
Alabama



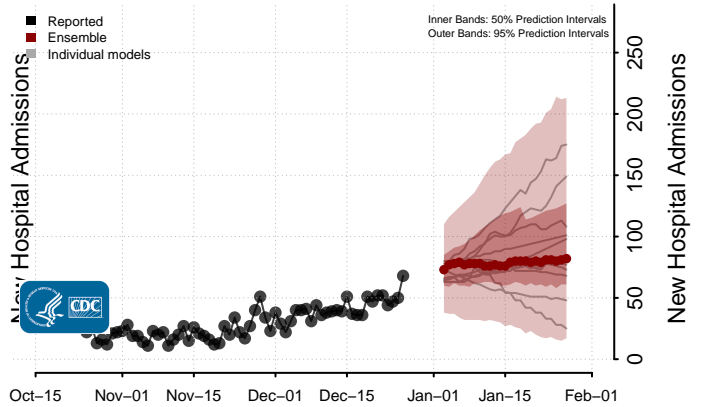
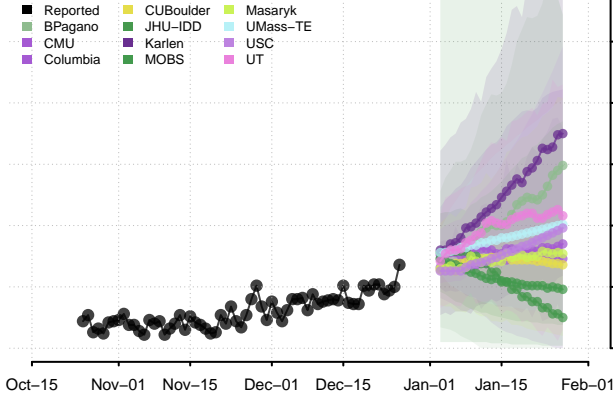
Alaska



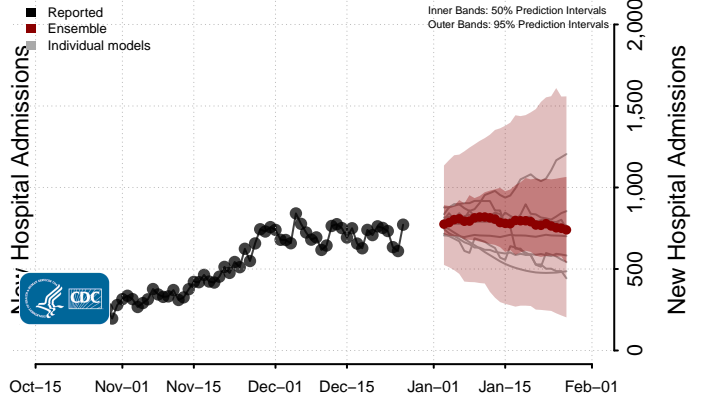
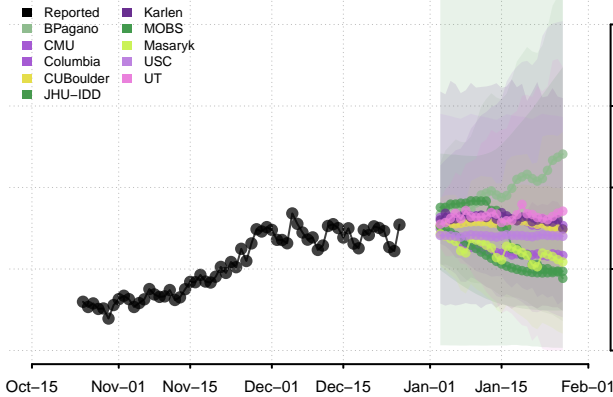
Arizona



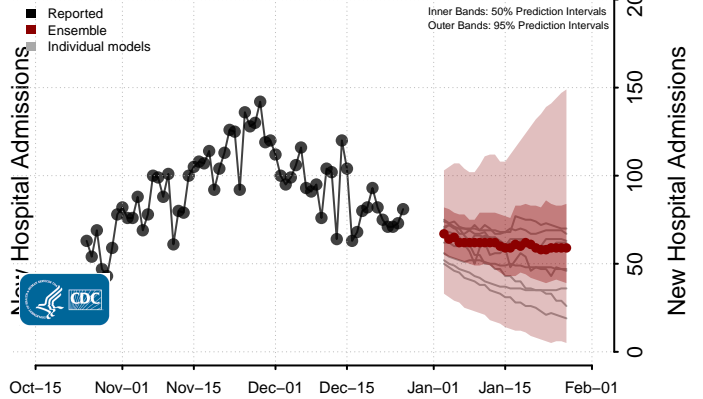
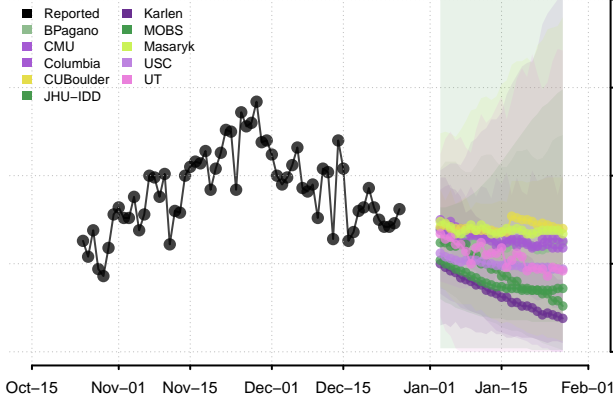
Arkansas**



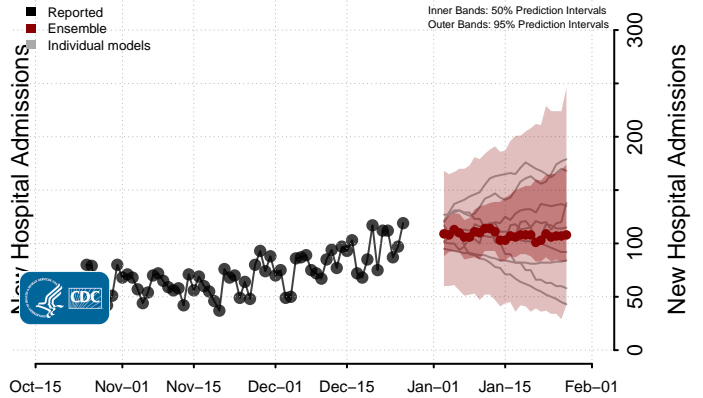
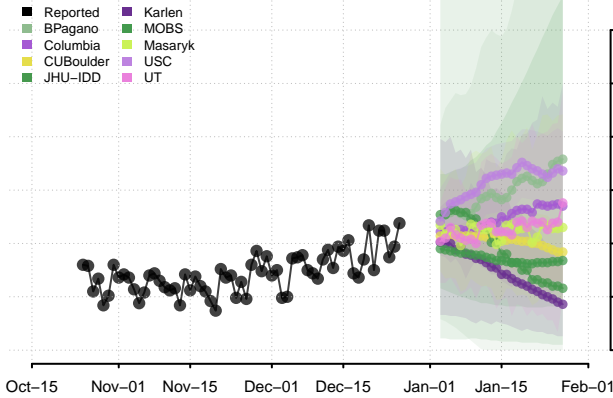
California



Colorado

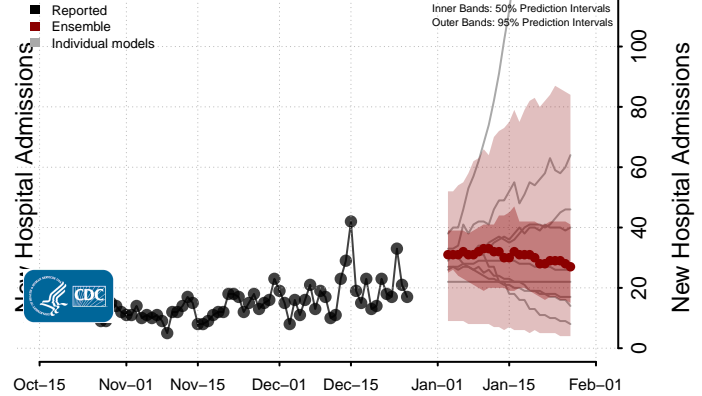
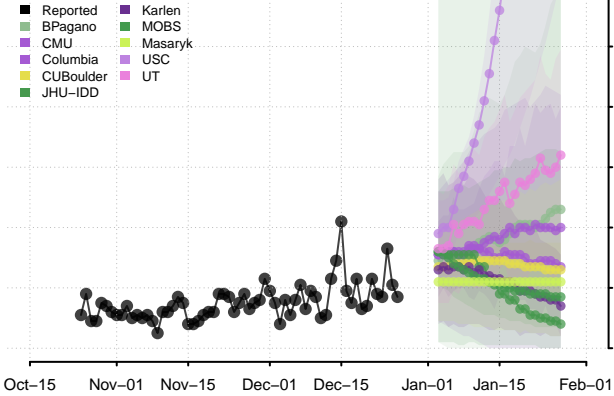


Connecticut

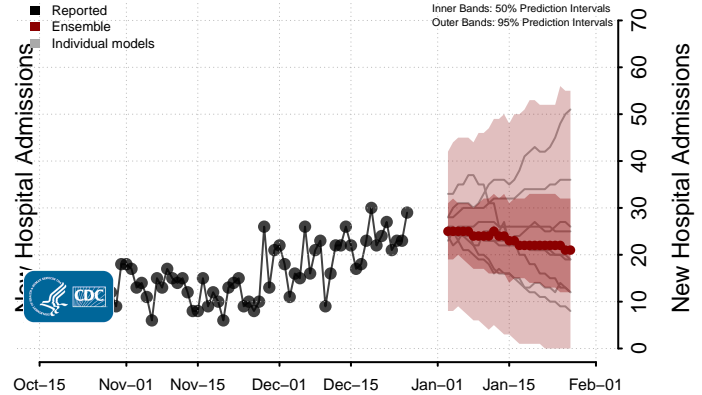
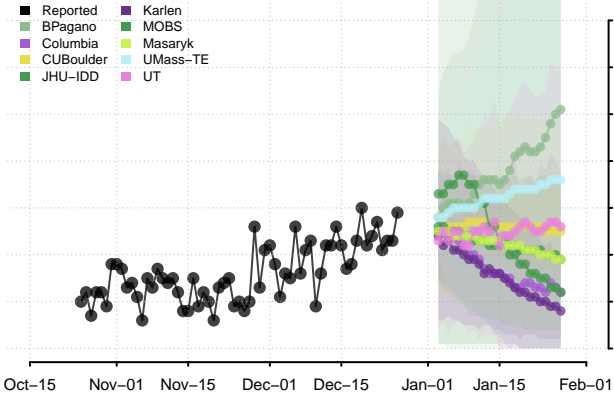


**New daily confirmed COVID-19 hospital admissions may increase in this location over the next four weeks. For these locations, the ensemble forecast indicates a median daily probability of 0.75 or greater that more hospital admissions will be reported in the last seven days of the forecast than the median in the last seven days of reported data.

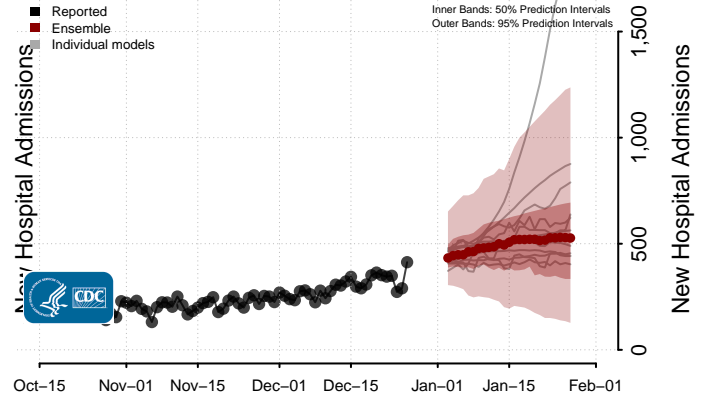
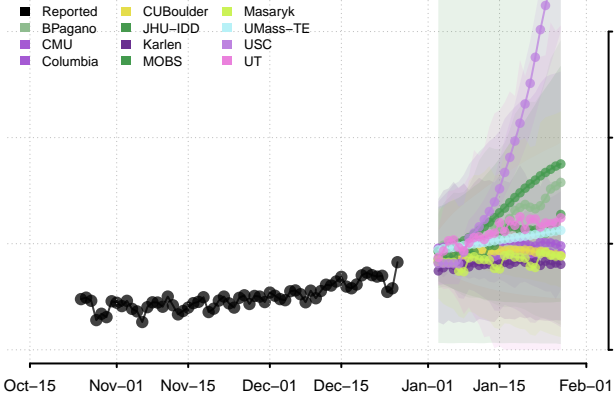
Delaware



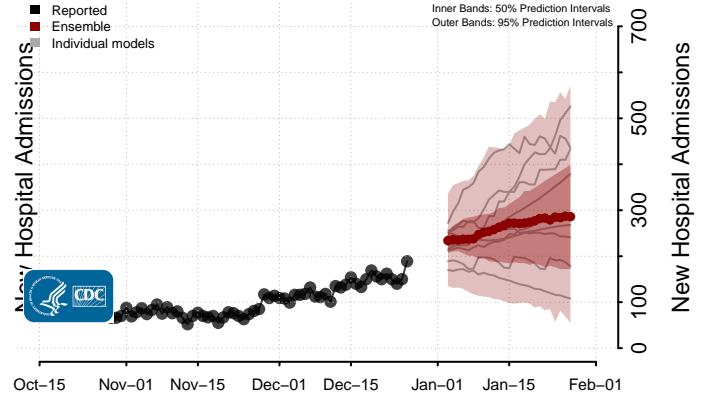
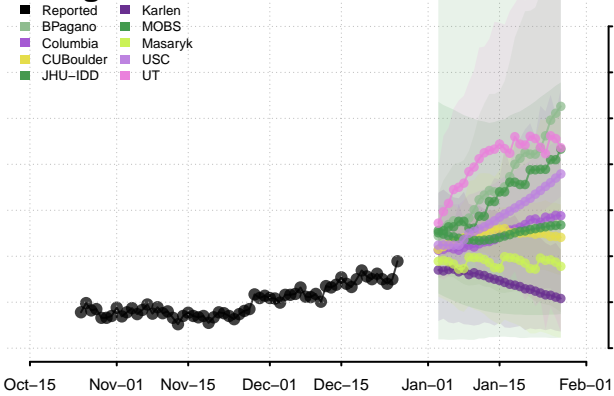
District of Columbia



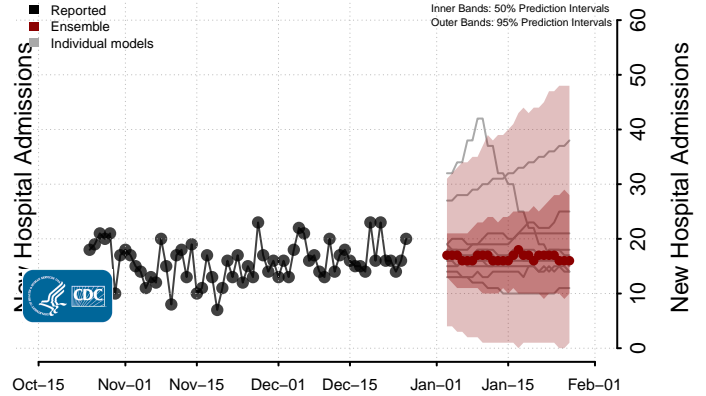
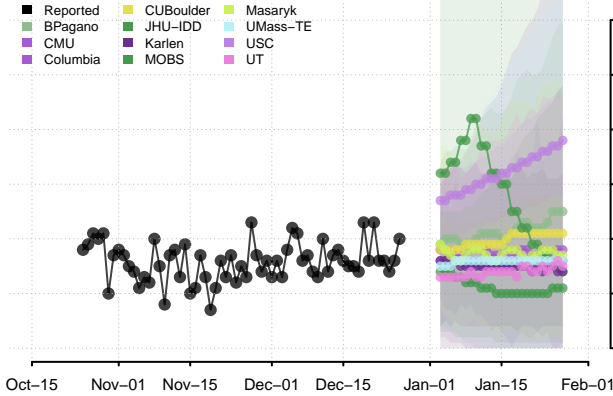
Florida



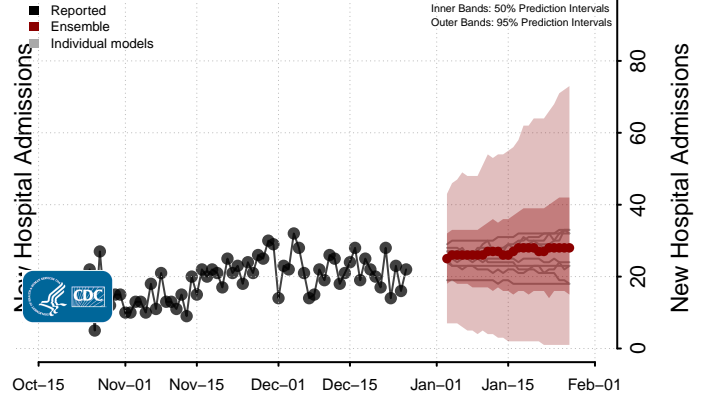
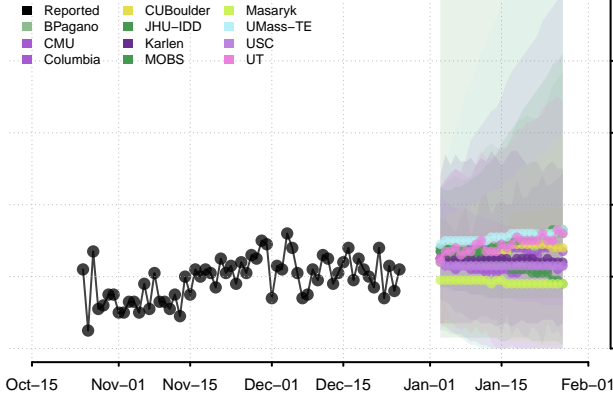
Georgia



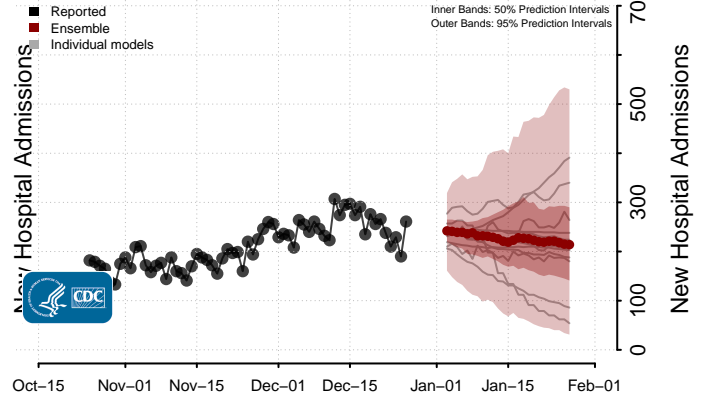
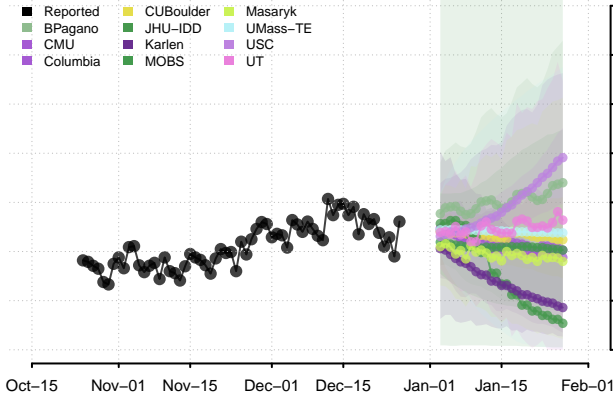
Hawaii



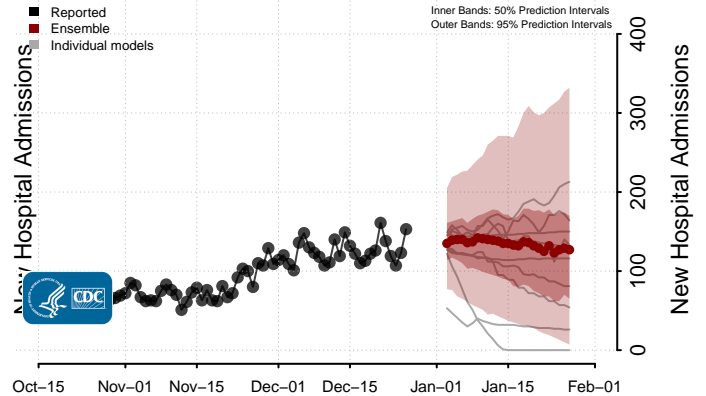
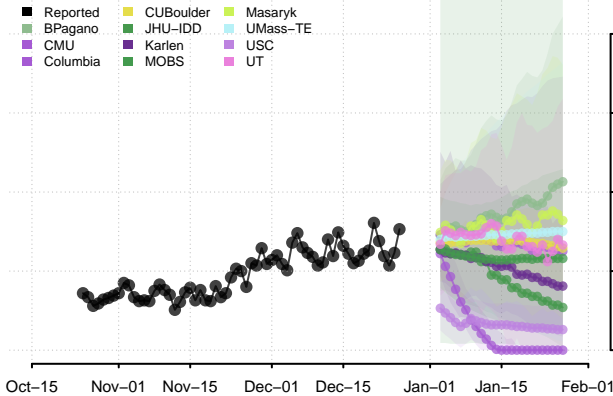
Idaho



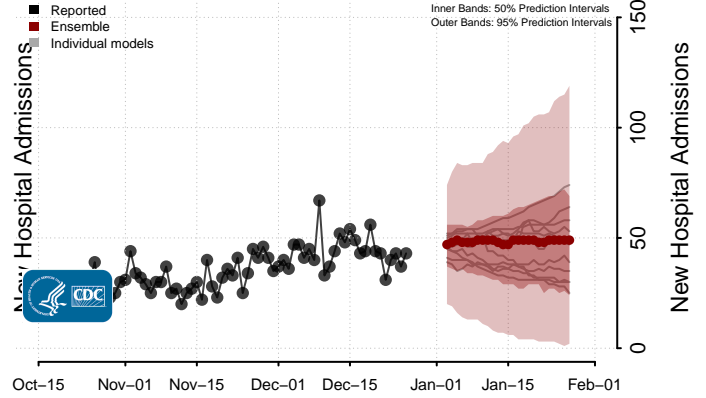
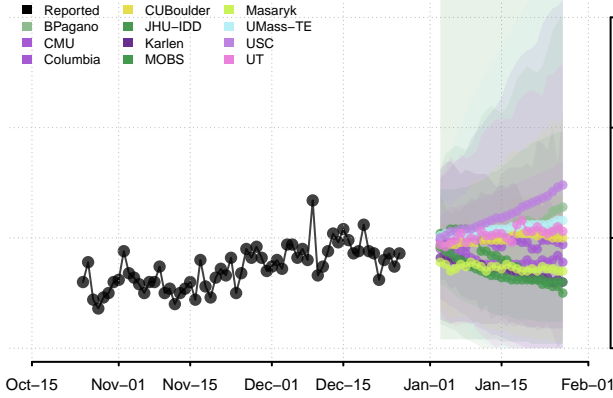
Illinois



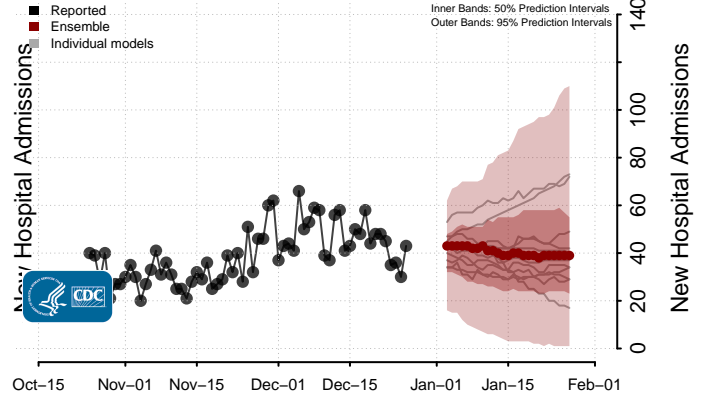
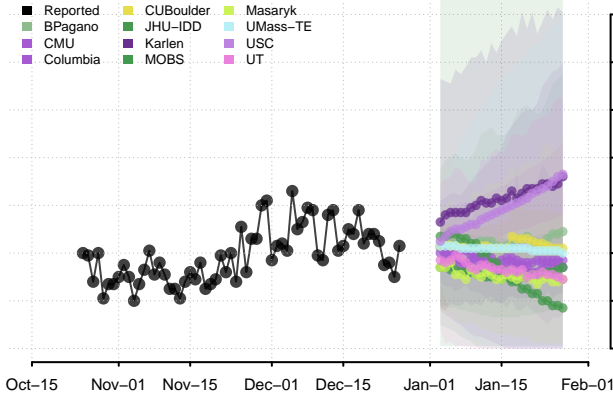
Indiana



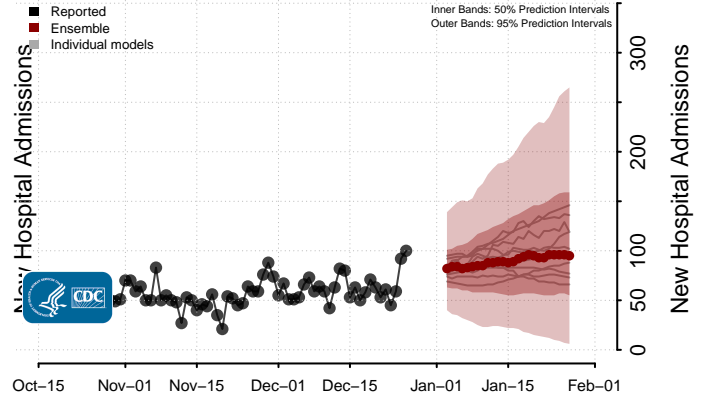
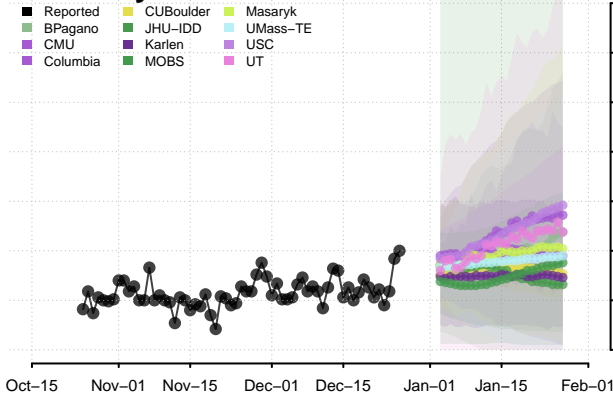
Iowa



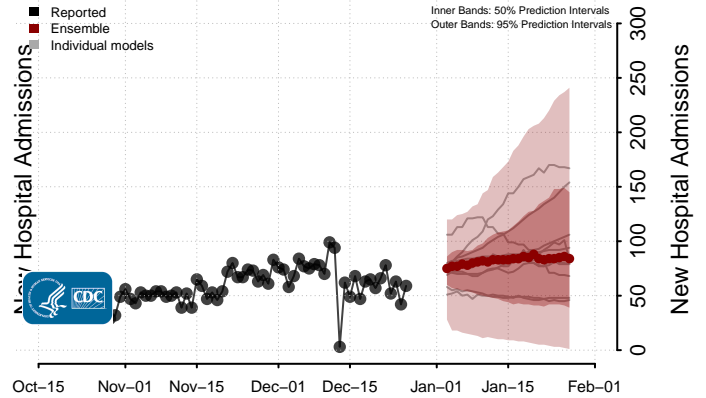
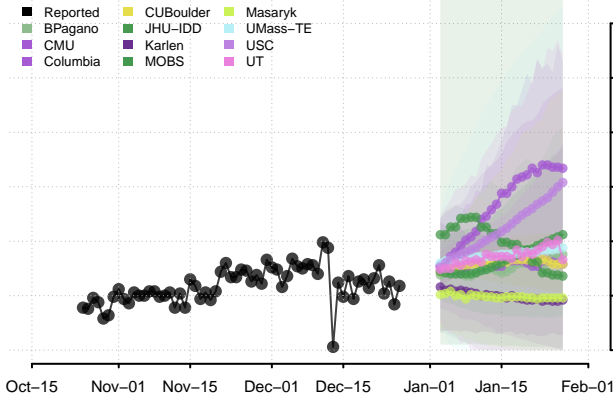
Kansas



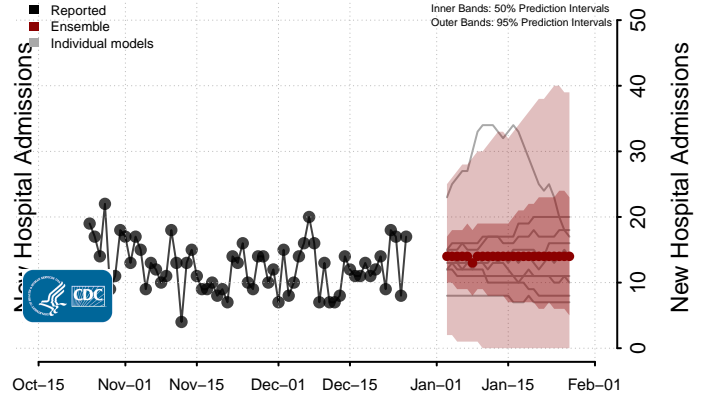
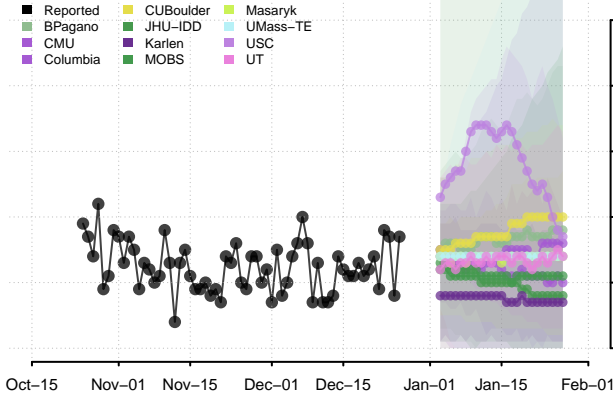
Kentucky



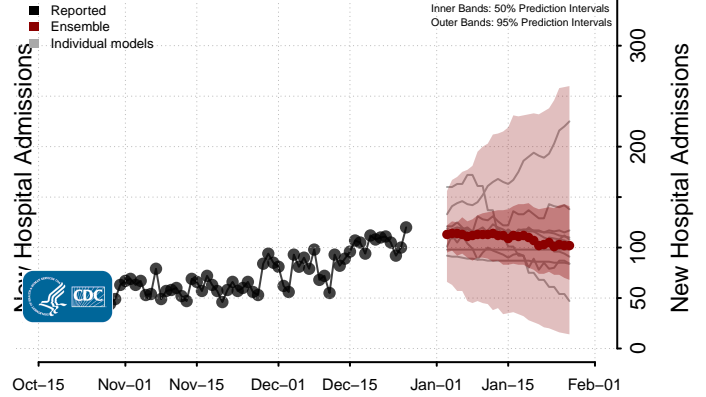
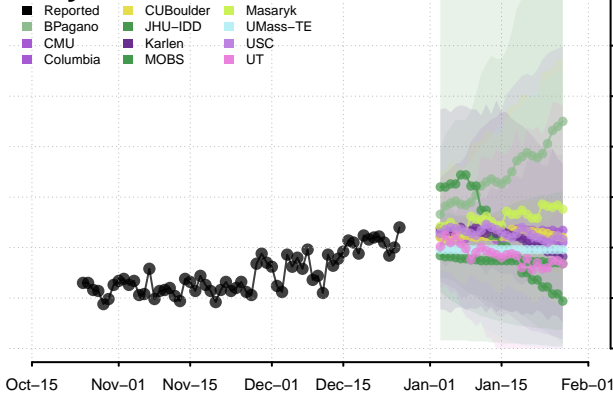
Louisiana



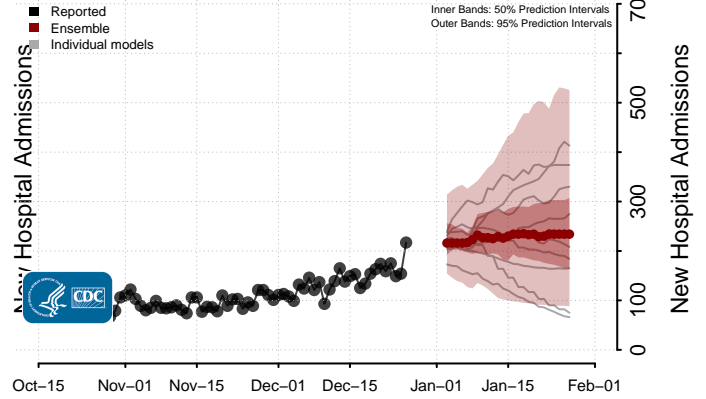
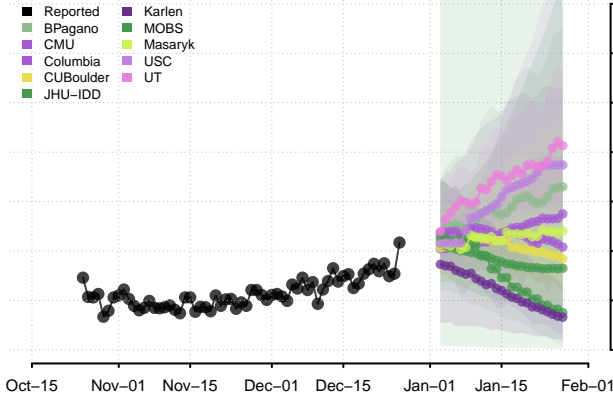
Maine



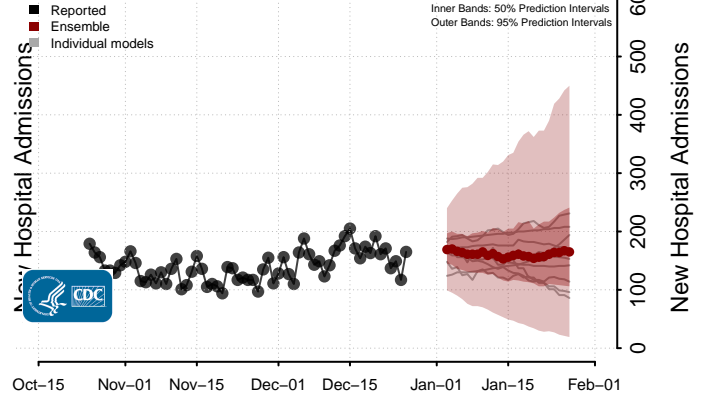
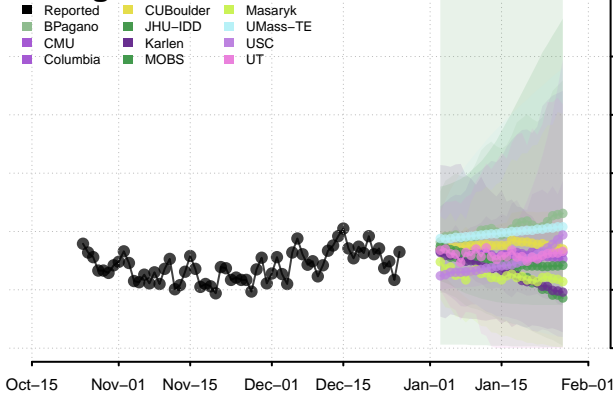
Maryland



Massachusetts**

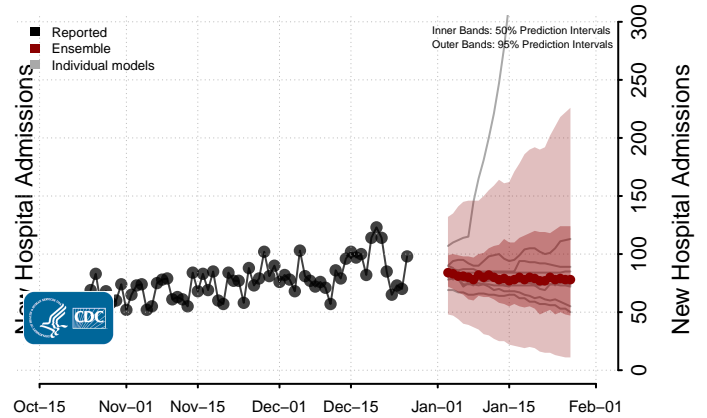
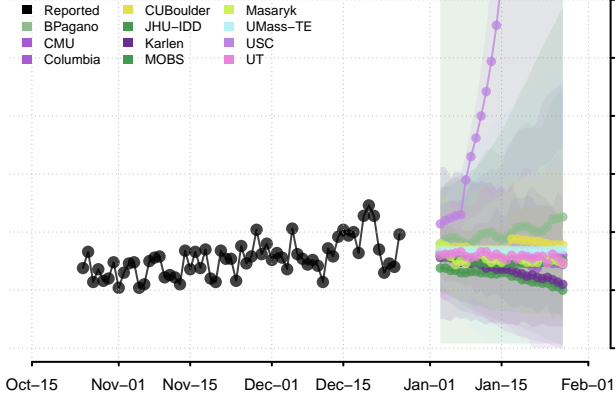


Michigan

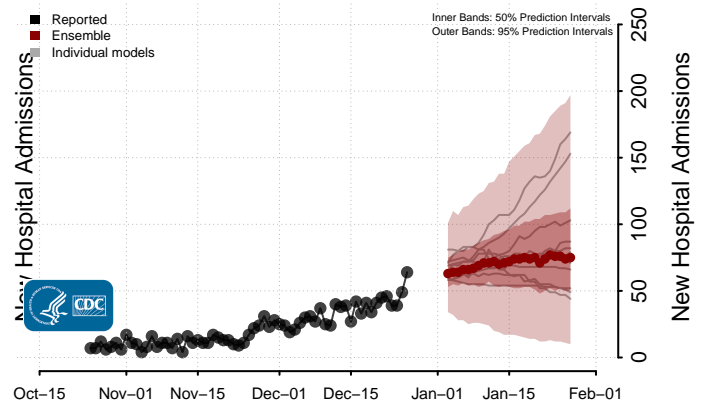
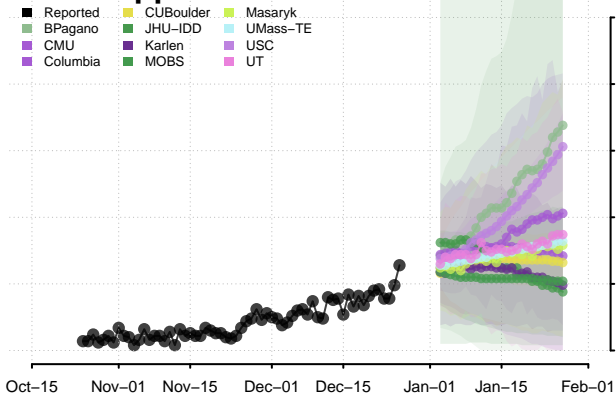


**New daily confirmed COVID-19 hospital admissions may increase in this location over the next four weeks. For these locations, the ensemble forecast indicates a median daily probability of 0.75 or greater that more hospital admissions will be reported in the last seven days of the forecast than the median in the last seven days of reported data.

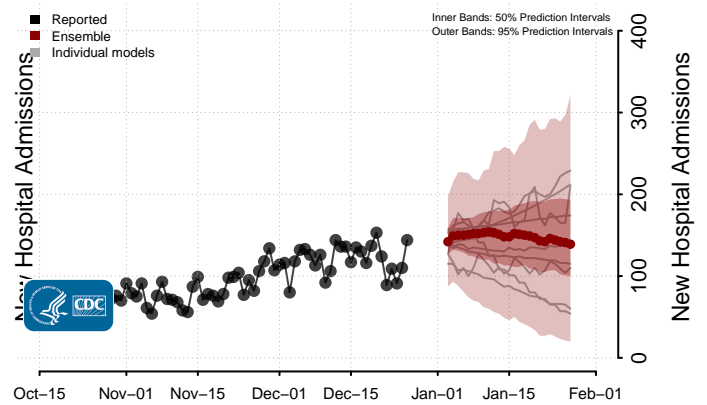
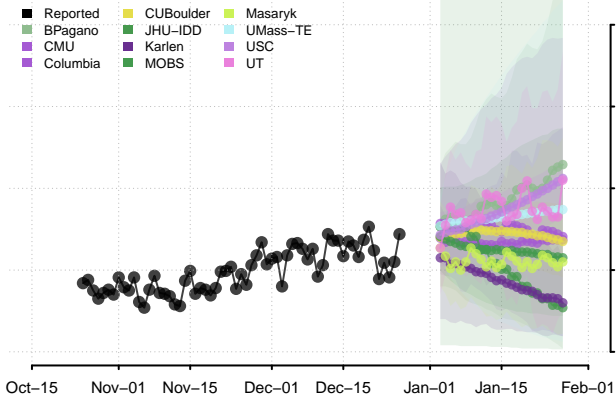
Minnesota



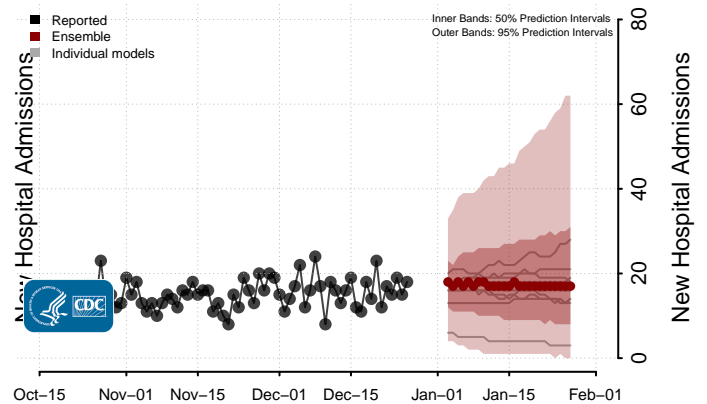
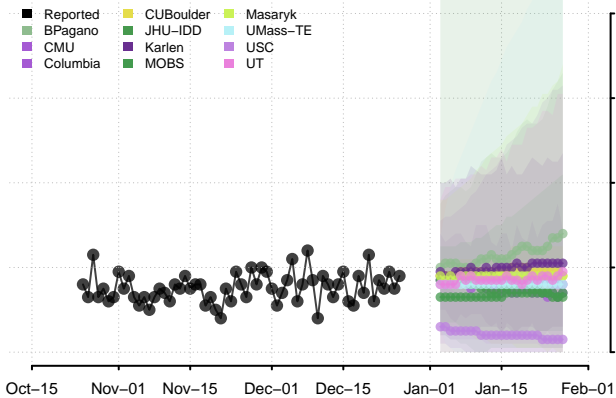
Mississippi**



Missouri

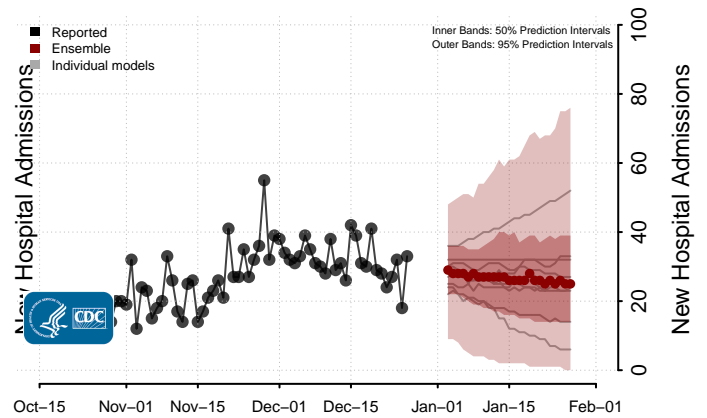
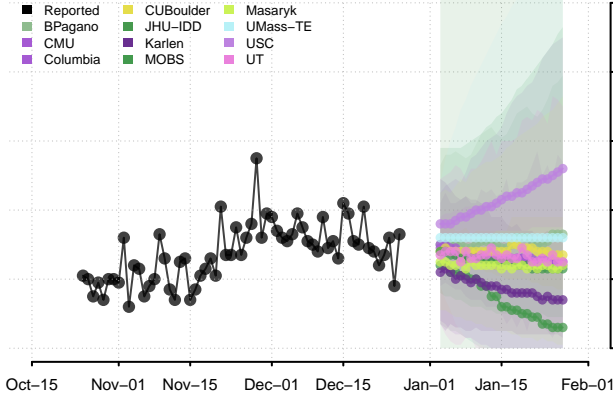


Montana

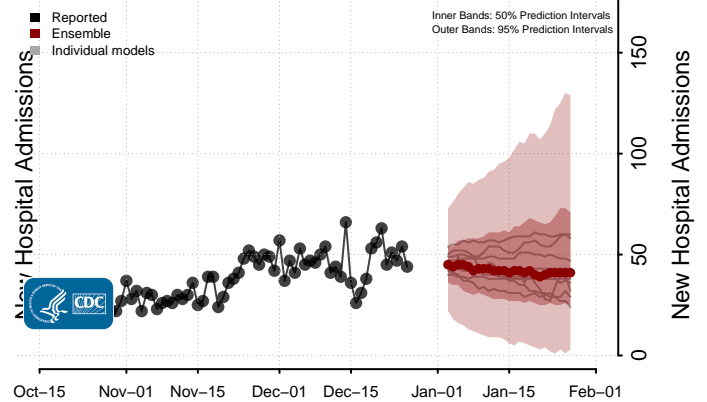
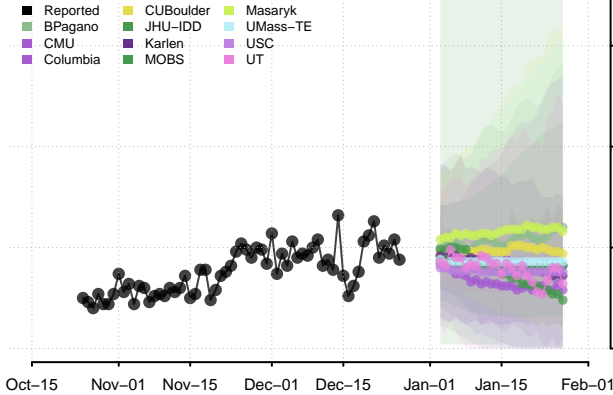


**New daily confirmed COVID-19 hospital admissions may increase in this location over the next four weeks. For these locations, the ensemble forecast indicates a median daily probability of 0.75 or greater that more hospital admissions will be reported in the last seven days of the forecast than the median in the last seven days of reported data.

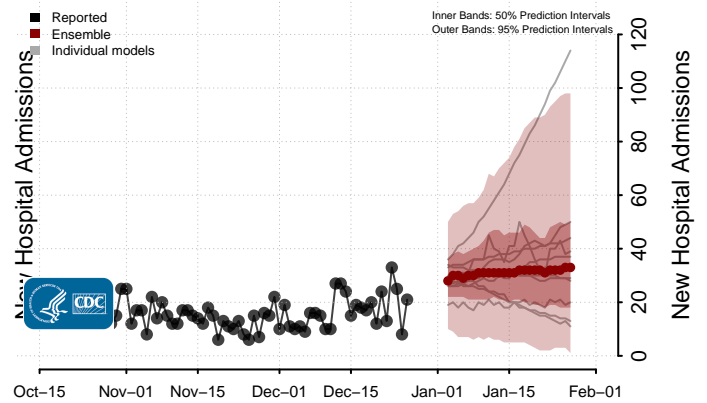
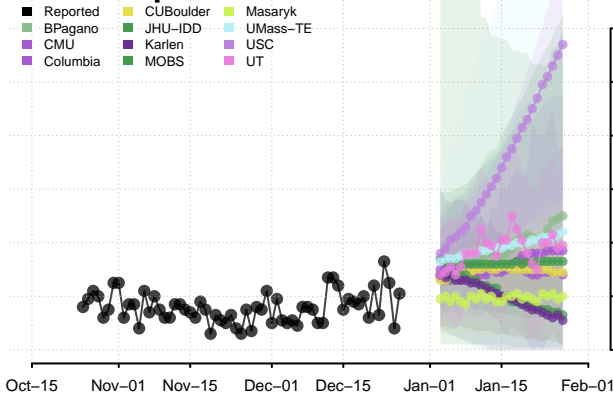
Nebraska



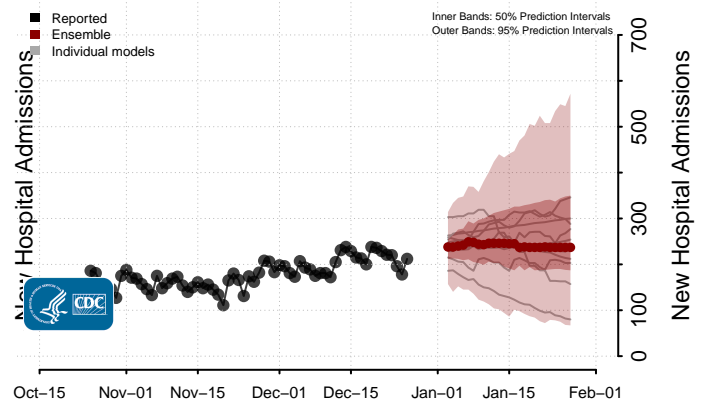
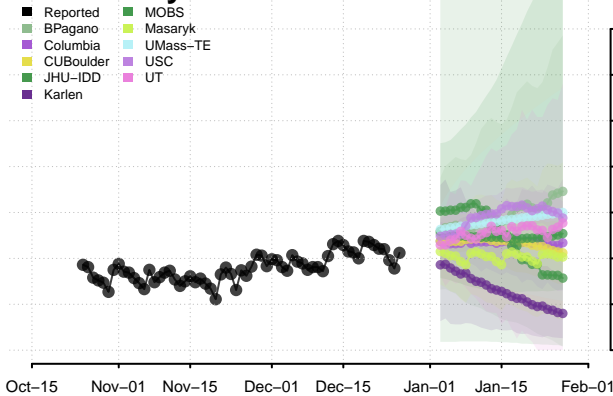
Nevada



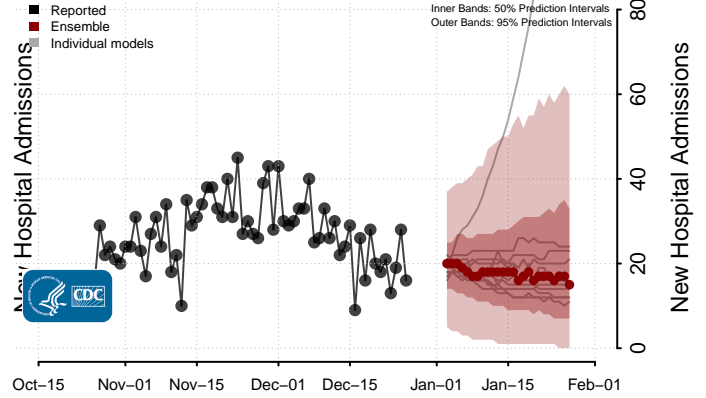
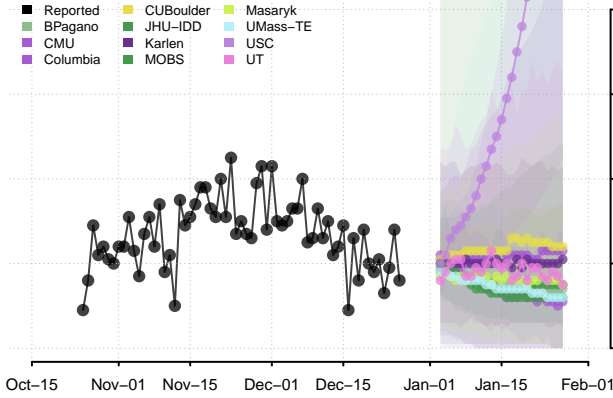
New Hampshire



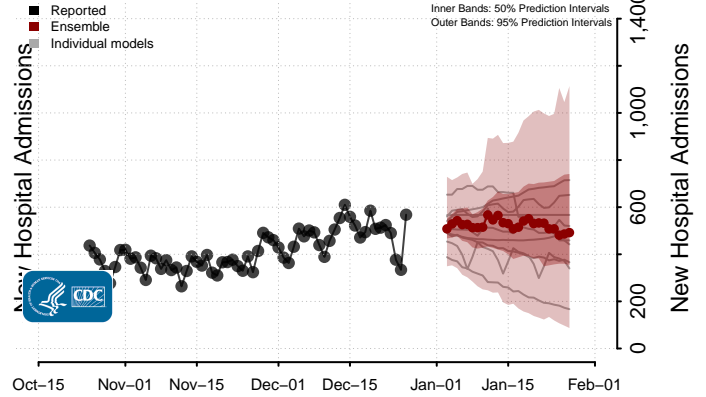
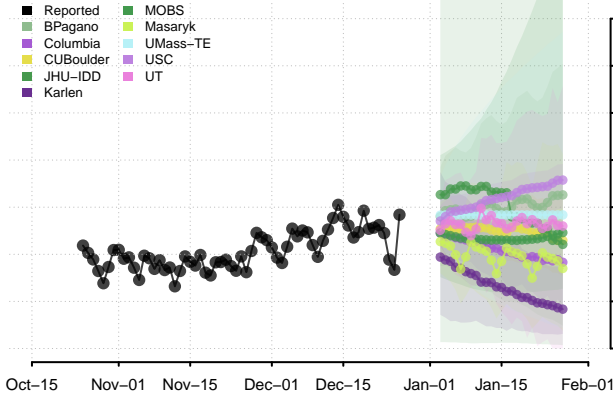
New Jersey



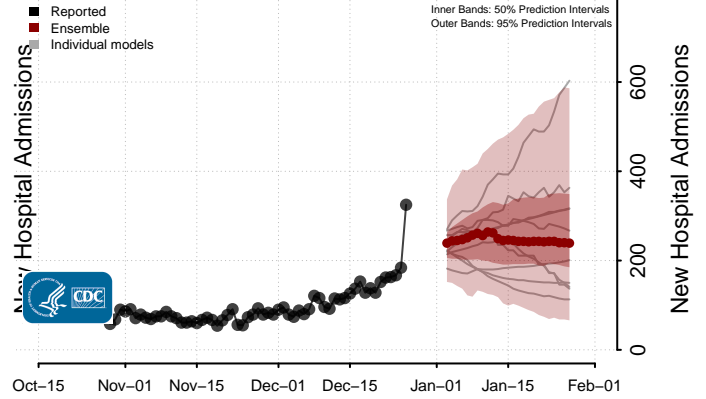
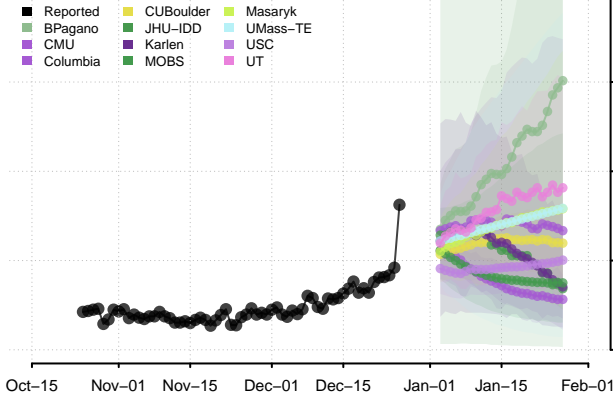
New Mexico



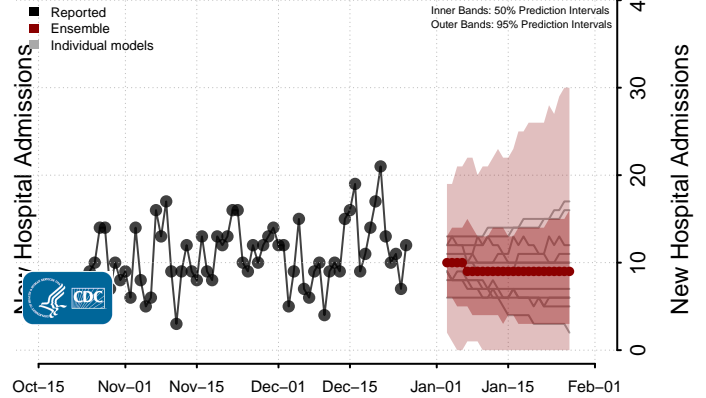
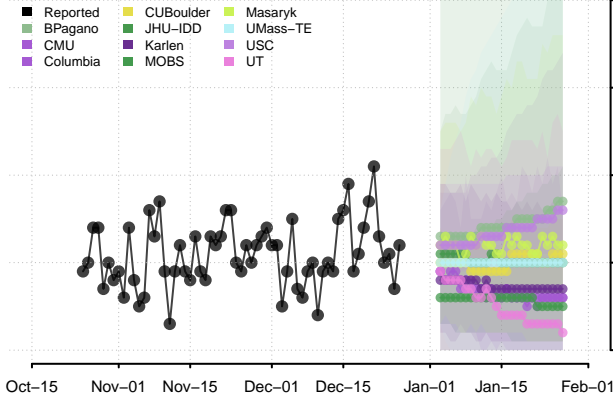
New York



North Carolina**

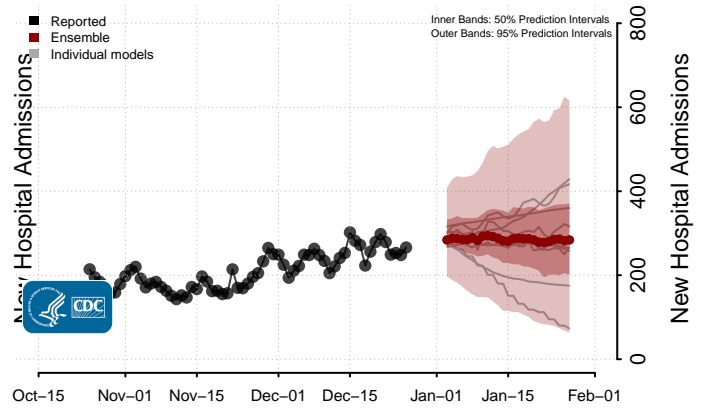
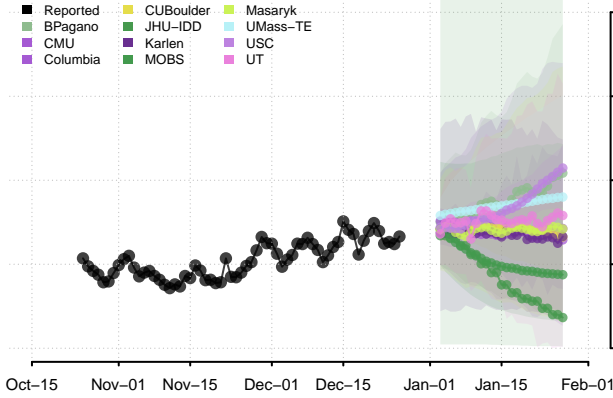


North Dakota

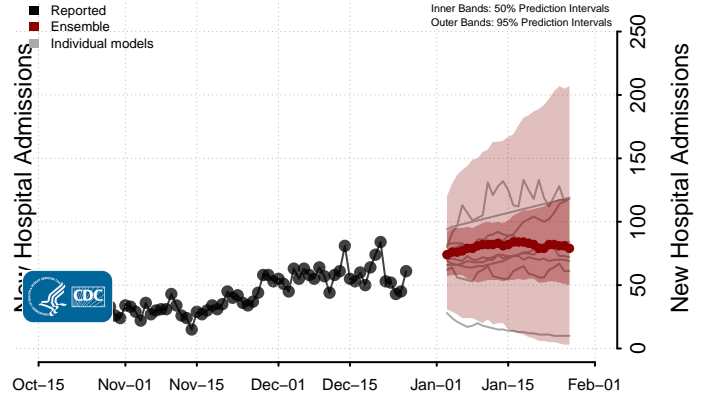
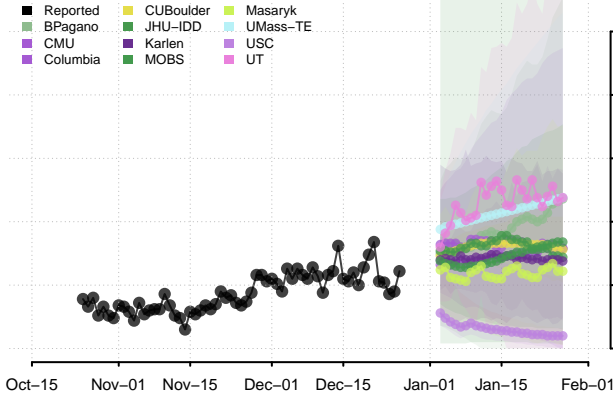


**New daily confirmed COVID-19 hospital admissions may increase in this location over the next four weeks. For these locations, the ensemble forecast indicates a median daily probability of 0.75 or greater that more hospital admissions will be reported in the last seven days of the forecast than the median in the last seven days of reported data.

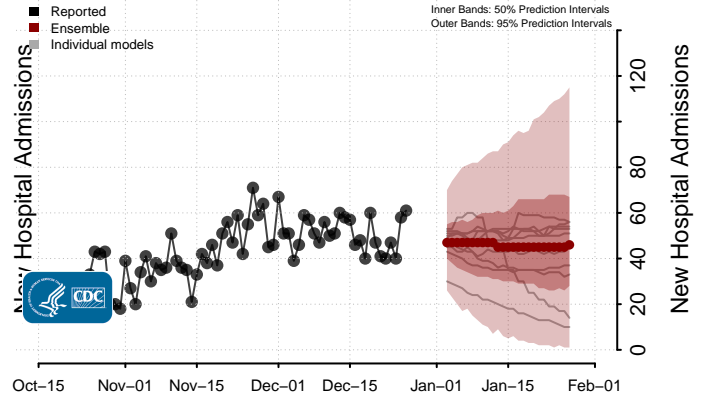
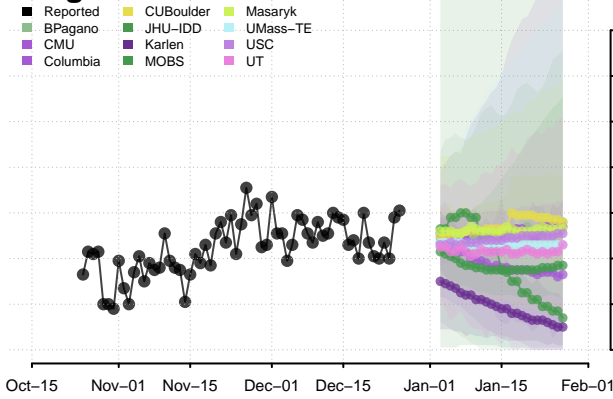
Ohio



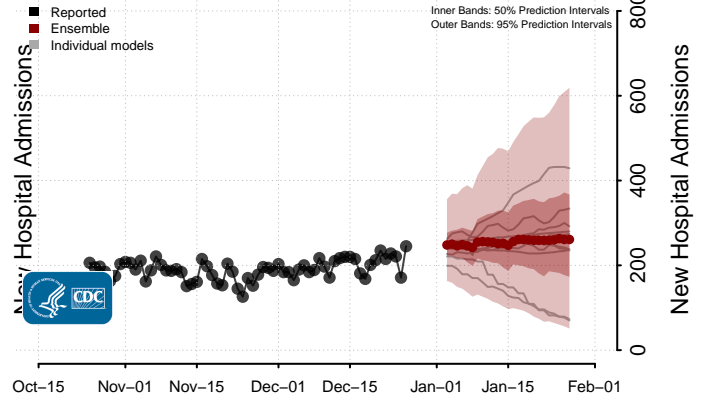
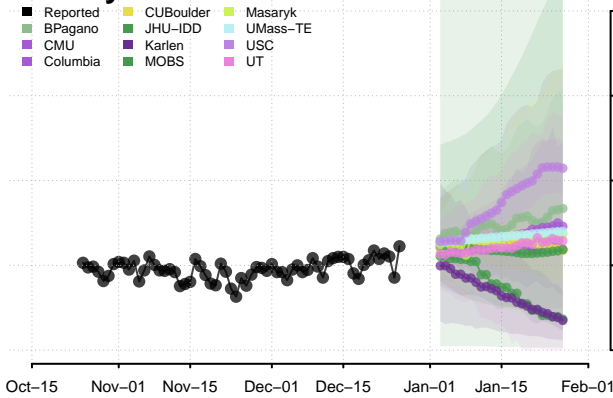
Oklahoma



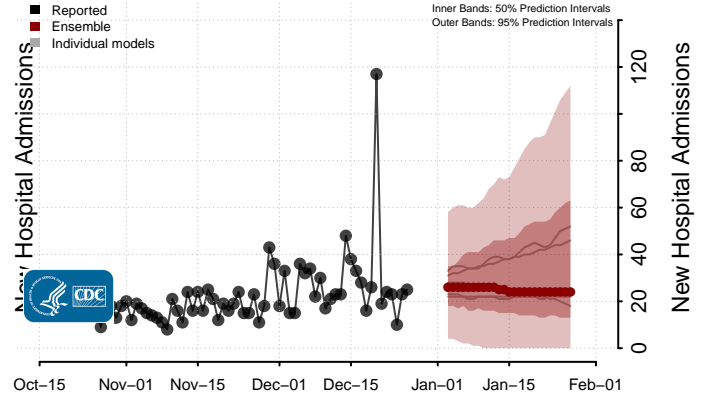
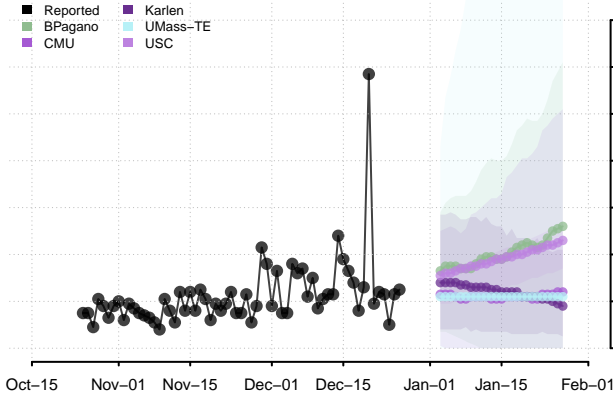
Oregon



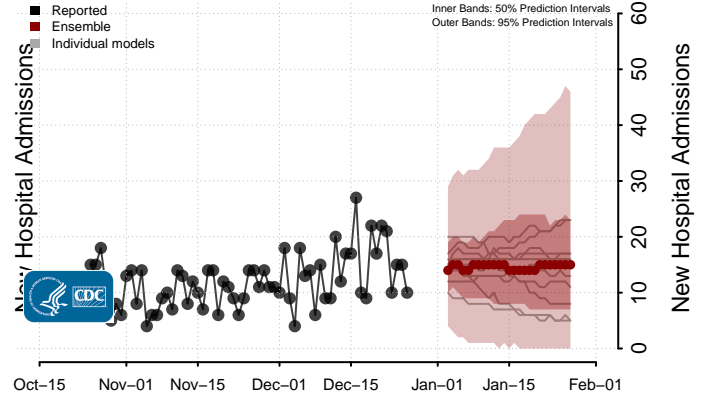
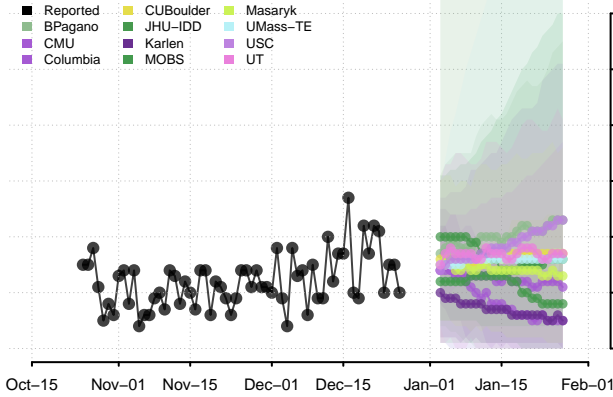
Pennsylvania



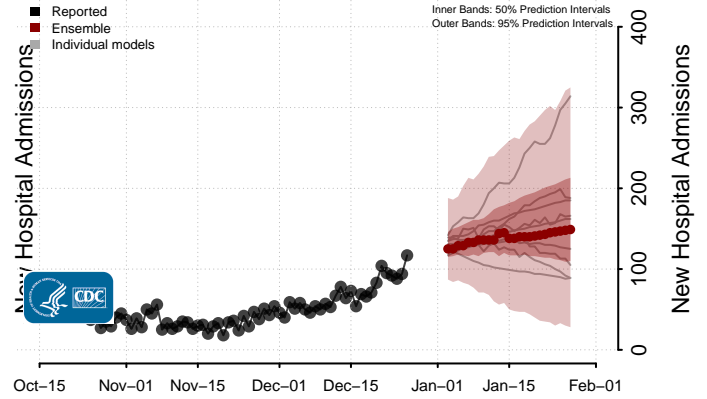
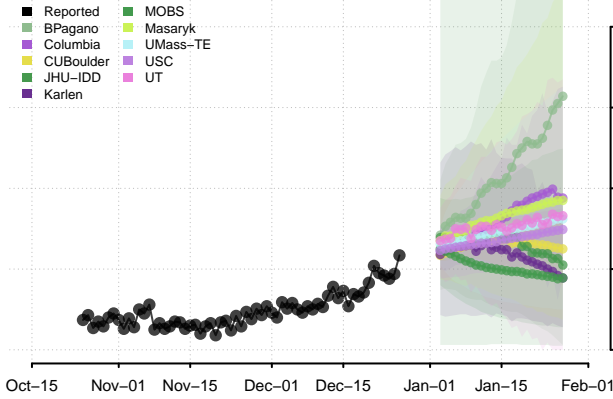
Puerto Rico



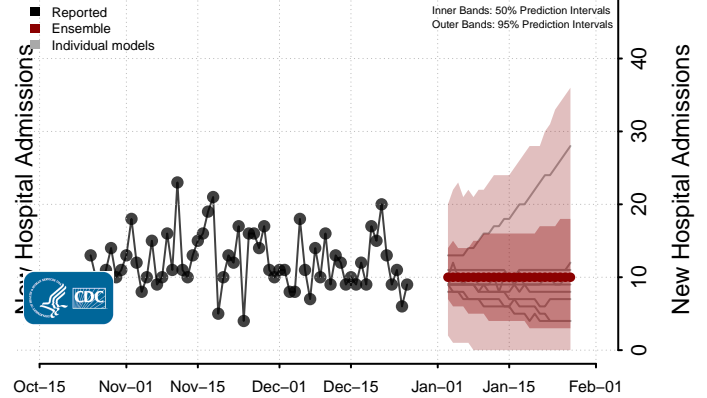
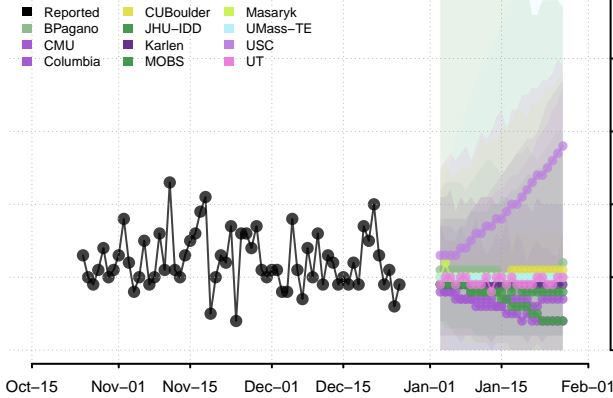
Rhode Island



South Carolina**

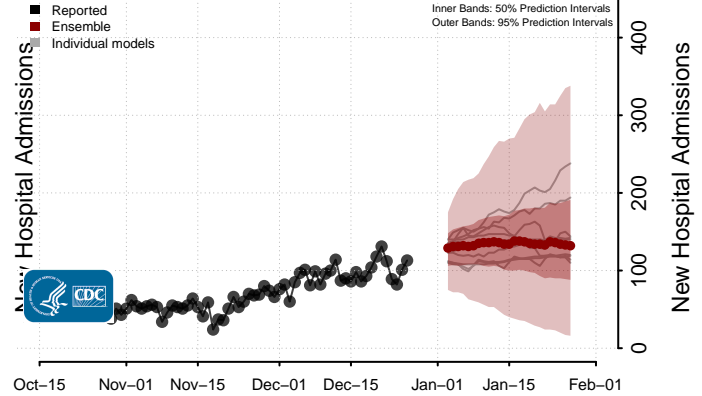
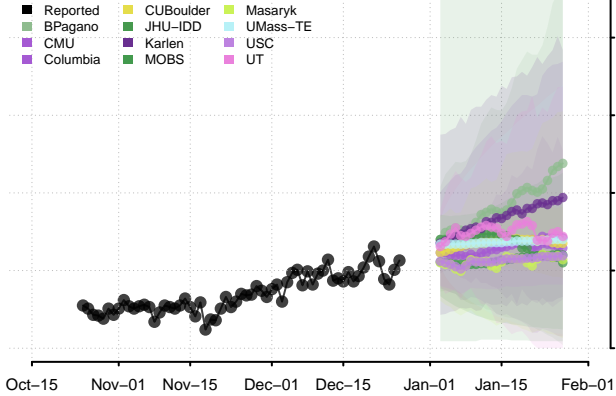


South Dakota

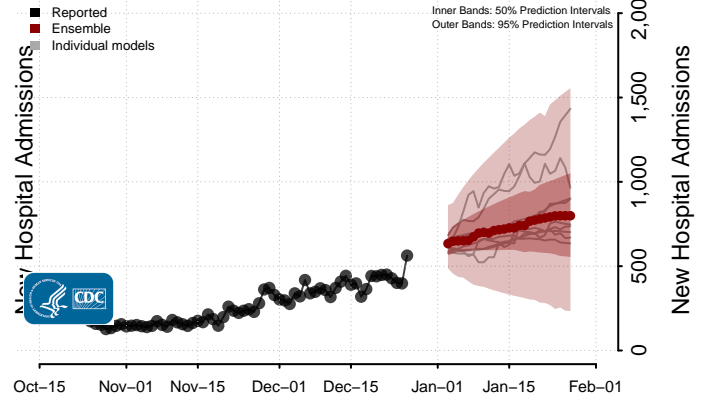
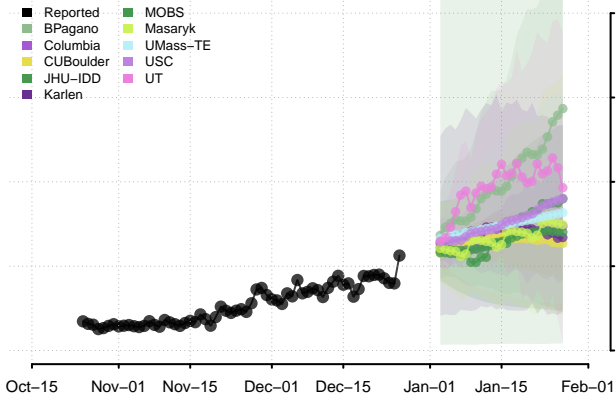


**New daily confirmed COVID-19 hospital admissions may increase in this location over the next four weeks. For these locations, the ensemble forecast indicates a median daily probability of 0.75 or greater that more hospital admissions will be reported in the last seven days of the forecast than the median in the last seven days of reported data.

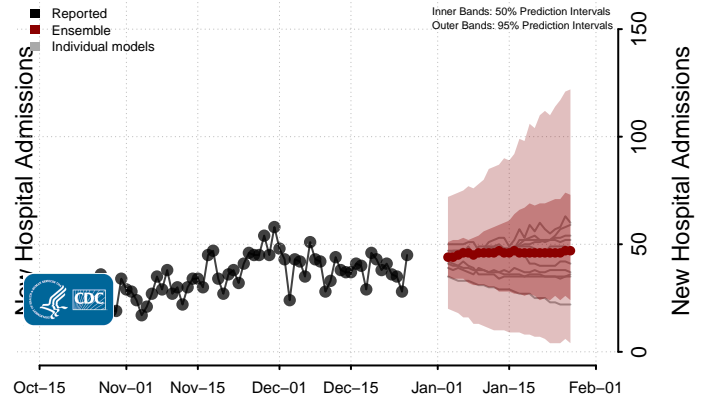
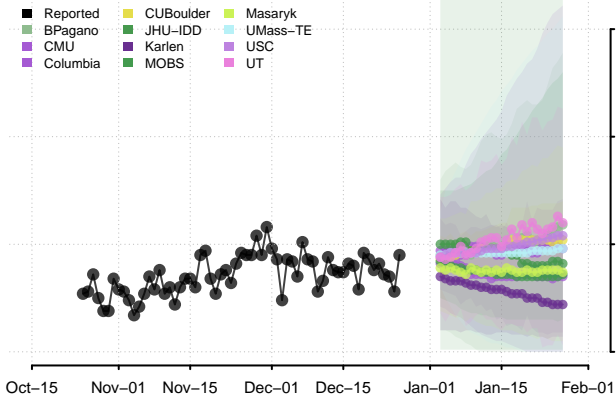
Tennessee



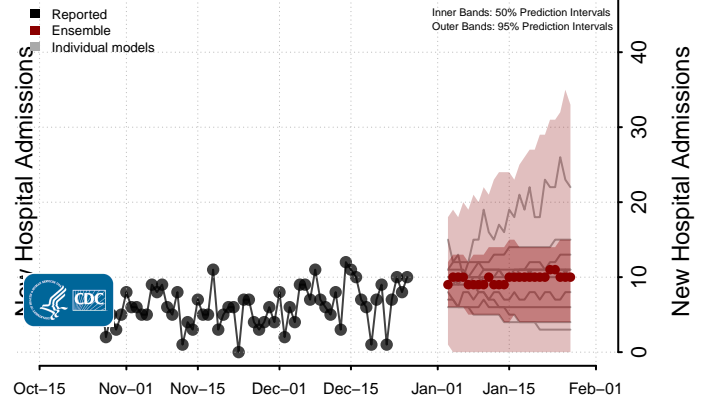
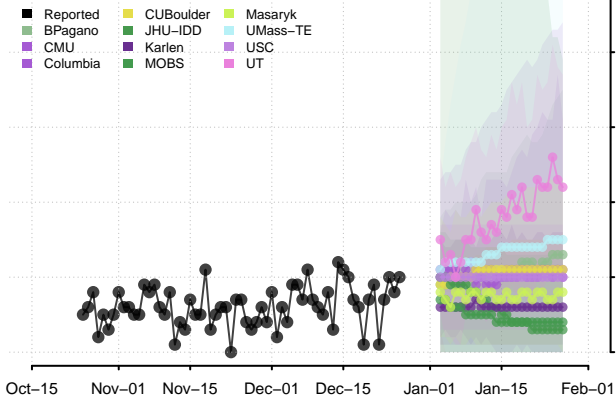
Texas**



Utah

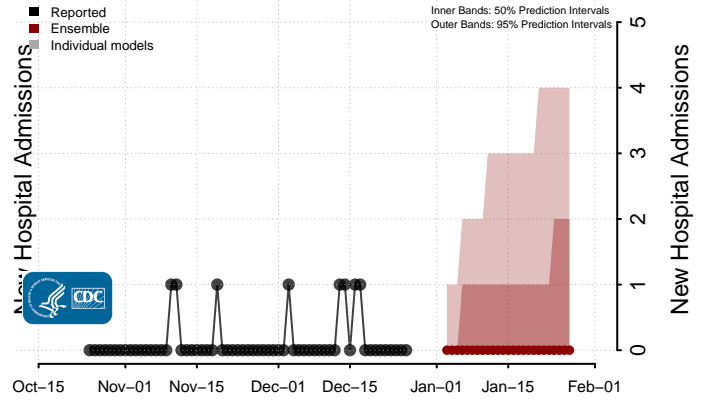
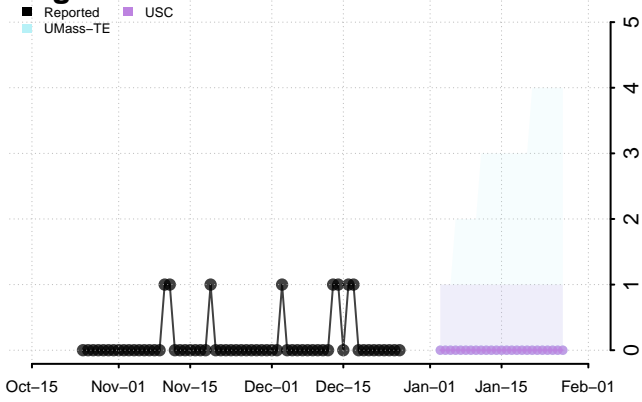


Vermont

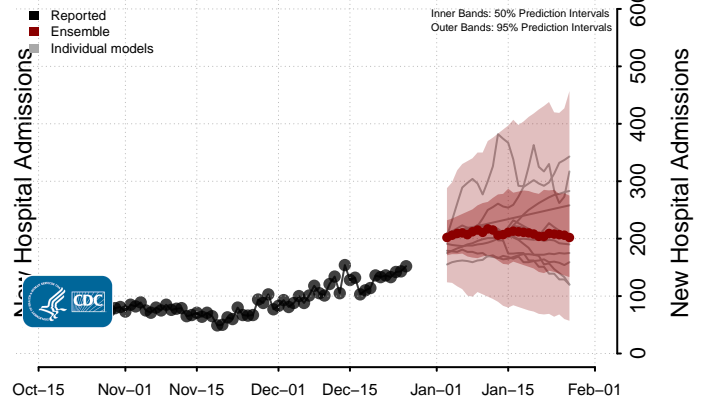
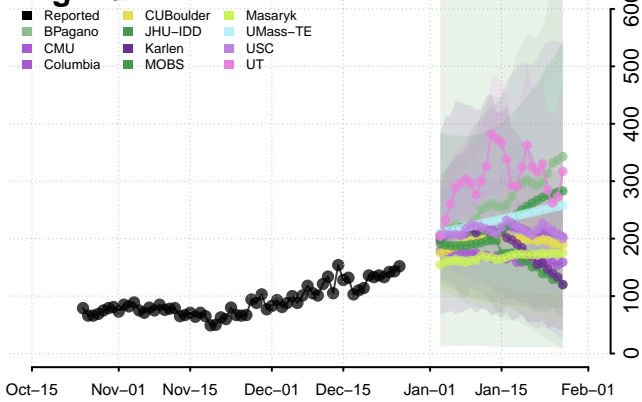


**New daily confirmed COVID-19 hospital admissions may increase in this location over the next four weeks. For these locations, the ensemble forecast indicates a median daily probability of 0.75 or greater that more hospital admissions will be reported in the last seven days of the forecast than the median in the last seven days of reported data.

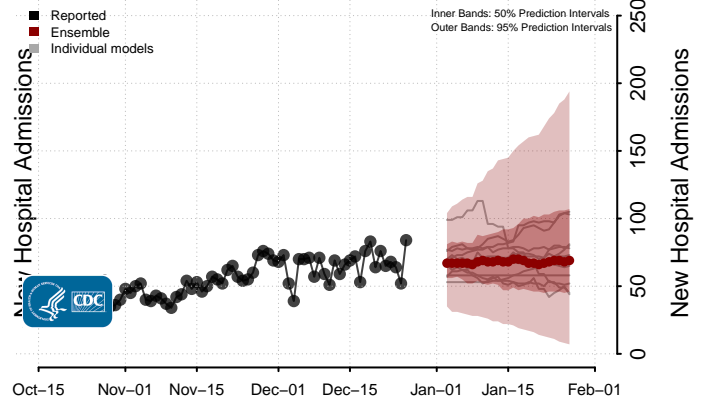
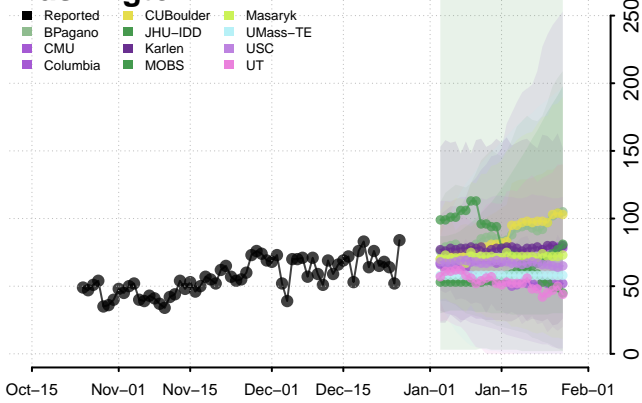
Virgin Islands



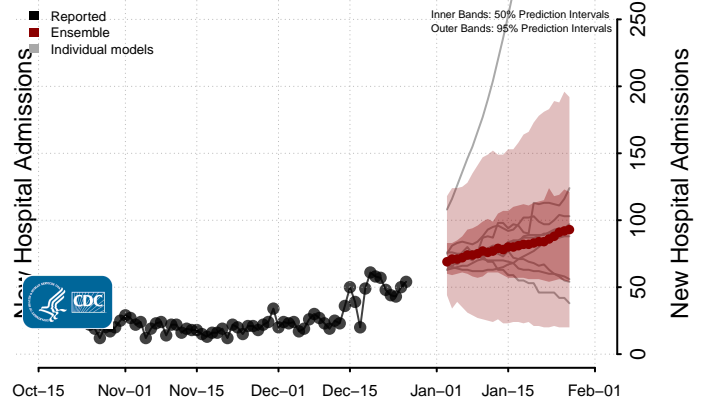
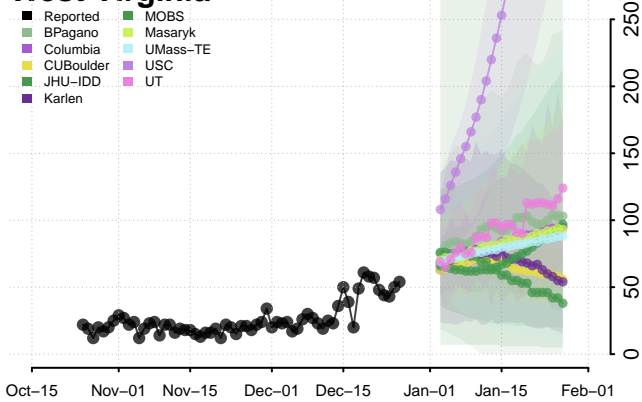
Virginia**



Washington

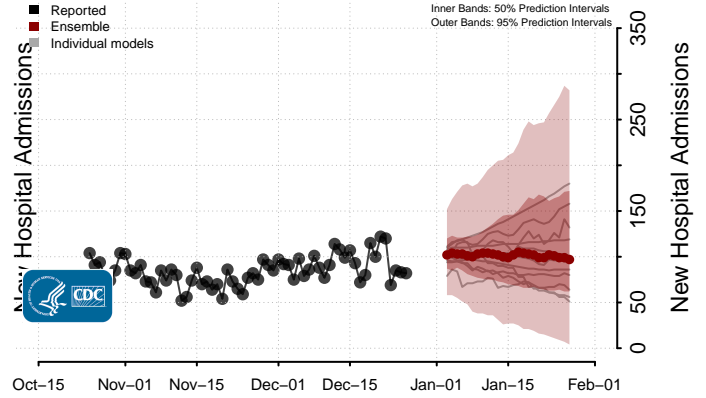
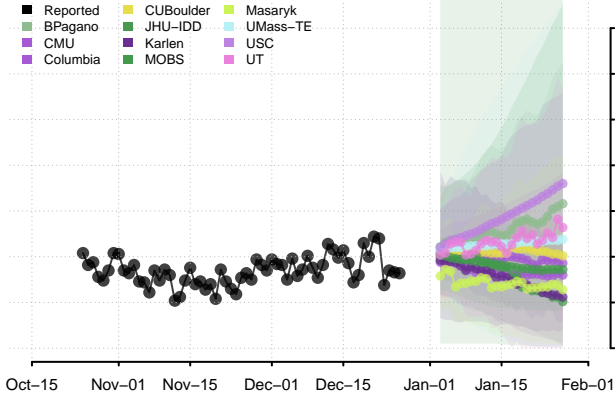


West Virginia**

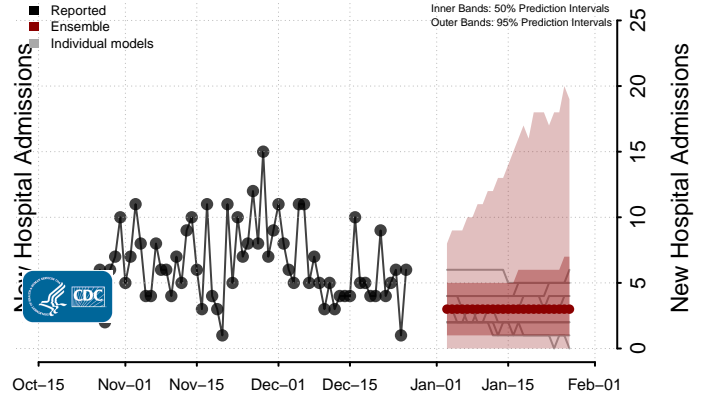
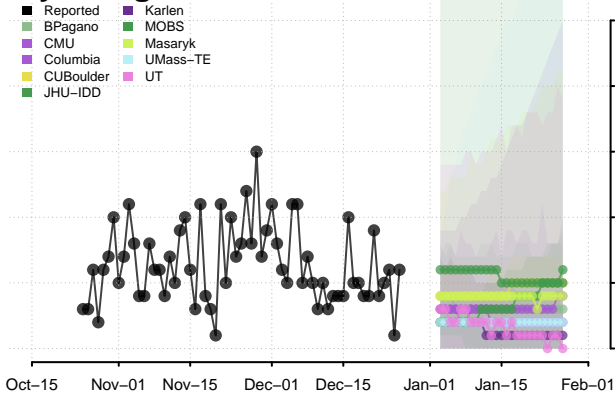


**New daily confirmed COVID-19 hospital admissions may increase in this location over the next four weeks. For these locations, the ensemble forecast indicates a median daily probability of 0.75 or greater that more hospital admissions will be reported in the last seven days of the forecast than the median in the last seven days of reported data.

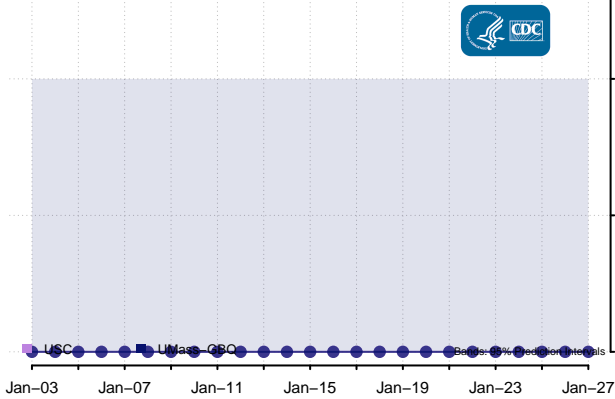
Wisconsin



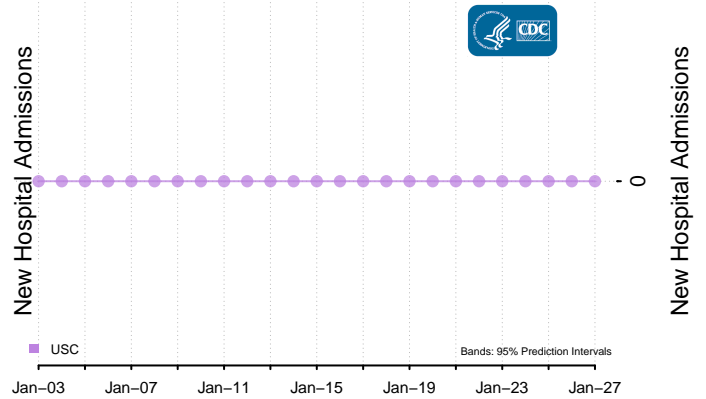
Wyoming



American Samoa***



Guam***



Northern Mariana Islands***

