

# COVID Data Tracker

Maps, charts, and data provided by CDC, updates Mon-Fri by 8 pm ET

[COVID-19 Home >](#)



Please note that during the holiday season there will be delays in the collection of wastewater samples and reporting of wastewater data.



CDC recommends use of [COVID-19 Community Levels](#) to determine the impact of COVID-19 on communities and to take [action](#). CDC also provides [Transmission Levels](#) (also known as Community Transmission) to describe the amount of COVID-19 spread within each county. Healthcare facilities use Transmission Levels to determine [infection control](#) interventions.

## United States at a Glance

Collapse

**United States**  
At a Glance

**Cases Total** 101,094,670

Case Trends

**Deaths Total** 1,091,184

Death Trends

**Current Hosp.** 42,297

Admission Trends

**15.4% of People 5+ with Updated Booster Dose**



Data Tracker Home

Cases, Deaths, & Testing

Case & Death Demographic Trends

Vaccination Distribution & Coverage

Vaccine Effectiveness & Breakthrough Surveillance

Health Equity

Pediatric

Pregnancy

## Wastewater Surveillance

### COVID-19: Wastewater Surveillance

Communities can track the presence of SARS-CoV-2, the virus that causes COVID-19, in wastewater samples. These data can provide an early warning of COVID-19's spread in communities. For more information, visit the [Wastewater Surveillance System page](#).

#### Monitoring Wastewater Surveillance Data

Wastewater surveillance for COVID-19 is a rapidly developing field. State, tribal, local, and health departments participating in the National Wastewater Surveillance System (NWSS) testing data to CDC. CDC then standardizes and interprets these data and presents them in the COVID Data Tracker. How often sites collect wastewater samples and how frequently data are reported to CDC varies by health department.

Wastewater data are meant to be used with other COVID-19 surveillance data to better understand COVID-19's spread in a community. Learn more about wastewater data by exploring each chart and map. To see a map of which SARS-CoV-2 variant is the most dominant at each wastewater sampling site, see [CDC COVID Data Tracker: Summary of Variant Surveillance](#).

[View information about the data and download the data.](#)



People at Increased Risk

Wastewater Surveillance

Health Care Settings

Social Impact & Prevention

Variants & Genomic Surveillance

Antibody Seroprevalence

Post-COVID Conditions

Traveler-Based Genomic Surveillance

Other COVID-19 Data

Communications Resources

COVID-19 Home

✉ Get Email Updates

Sign up to receive the COVID Data Tracker Weekly Review.

Email Address:

Email Address

[What's this?](#)

Submit

On This Page

[Monitoring Wastewater Surveillance Data](#)

[Wastewater Metric Chart](#)

[Wastewater Metric Map](#)

[Data Downloads](#)

[Terms to Know](#)

[About the Data](#)

Maps, charts, and data provided by CDC, updates Mon-Fri by 8pm ET<sup>†</sup>. This represents all wastewater data submitted to CDC's NWSS DCIPHER platform, with the exceptions described in the [About the Data section](#) below. Each site represents a site. A site can represent all or part of a "sewershed," which is the area contributing wastewater to a specific location. Not all communities report wastewater data to CDC. Participation is voluntary, and wastewater sampling is only from sewer systems so communities that rely primarily on septic systems are not represented. In addition, sites that do not submit data to NWSS are not represented on the map due to various factors, such as small population size or limited specific sampling.

[View Footnotes and Download Data](#)

## Wastewater Metric Chart

This chart shows how much virus levels have changed (increased and decreased) over time at various sites across the United States. It shows the percent of sites in each category of the percent change in virus level data among all sites with available data.

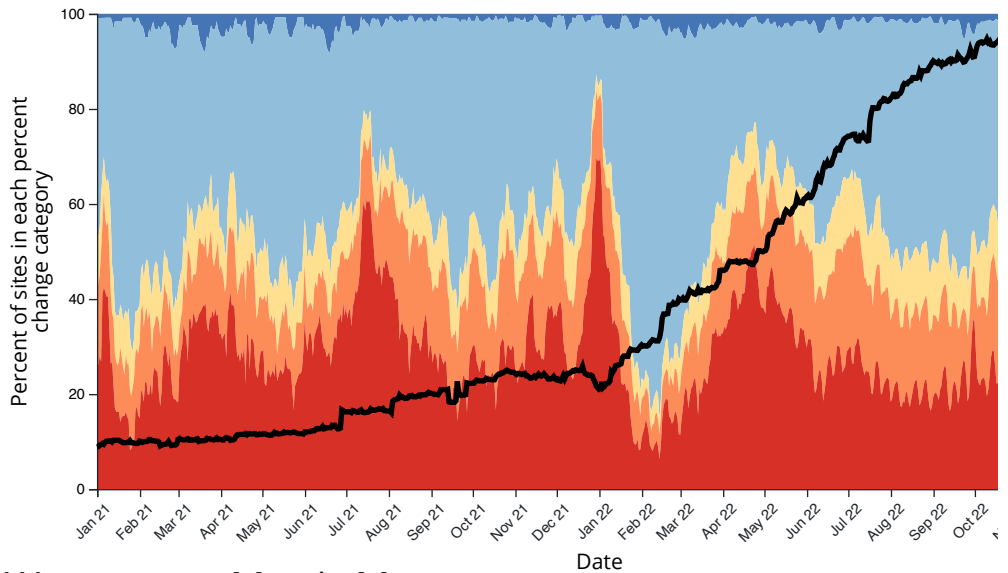
The percent change metric shows whether virus levels have increased or decreased at sites over the last 15 days.

- Blue categories (Large decrease (-100%); Decrease (-99% to -10%)): Virus levels decreased at these sites in the last 15 days.
- Yellow category (Stable (-9% to 9%)): Virus levels stayed about the same at these sites in the last 15 days.
- Orange and red categories (Increase (10% to 99%); Large increase (100% or more)): Virus levels increased at these sites in the last 15 days.

The chart shows the overall percent of sites that were in each category over time since January 2020. If more area on the chart is shaded light or dark blue, it means virus levels were decreasing at more sites in that area over time. If more area on the chart is shaded red or orange, it means virus levels were increasing at that point in time. Since the percent change in the last 15 days metric may be affected by how many wastewater plants were collecting wastewater samples, the black line shows the number of sites with available data for each date.

Note: This chart **does not** show overall levels of SARS-CoV-2 in wastewater.

## Percent of sites in each percent change category over time, United States



## Wastewater Metric Map

State or territory:

Select State or Territory

County:

Select a state in order to enable county select

[Reset Selections](#)

Time Period: Dec 19, 2022 – Jan 02, 2023

Major Cities On

Major

### Metric:

- Current virus levels in wastewater by site
- Percent change in the last 15 days
- Percent of wastewater samples with detectable virus

### Show:

- Sites with no recent data
- Sites that started sampling after

### Current virus levels in wastewater by site

This metric shows whether SARS-CoV-2 levels at a site are currently higher or lower than past levels at the same site. 0% means levels are the lowest they have been at the site; 100% means the highest they have been at the site. Public health officials watch for increasing levels of the virus in wastewater over time and use these data to help make public health decisions.

**⚠ Note:** Sites began collecting data at different times. Sites that began reporting wastewater data on or after December 1, 2021 are not comparable to sites that started reporting data on or before December 1, 2021. The data history for these new sites is not long enough to reflect the same surges as older sites.

Current SARS-CoV-2 virus levels by site, United States

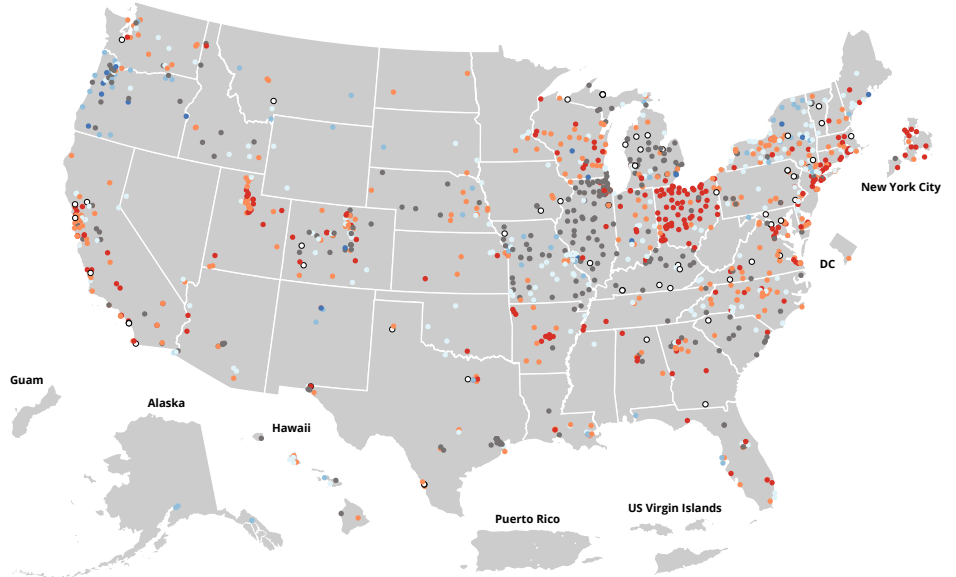
| Current virus levels category       | Num. sites | % sites | Category change in 15 days |
|-------------------------------------|------------|---------|----------------------------|
| <input type="checkbox"/> New Site   | 61         | 6       | 2%                         |
| <input type="checkbox"/> 0% to 19%  | 19         | 2       | - 5%                       |
| <input type="checkbox"/> 20% to 39% | 70         | 7       | - 18%                      |
| <input type="checkbox"/> 40% to 59% | 223        | 23      | - 14%                      |

| Current virus levels category | Num. sites | % sites | Category change in I |
|-------------------------------|------------|---------|----------------------|
| 60% to 79%                    | 346        | 35      | - 15%                |
| 80% to 100%                   | 260        | 27      | - 7%                 |

Total sites with current data: 979

Total number of wastewater sampling sites: 1306

[How is the current SARS-CoV-2 level compared to past levels calculated?](#)



Select legend categories to filter points on the map.

- New site
- 0% to 19%
- 20% to 39%
- 40% to 59%
- 60% to 79%
- 80% to 100%
- No record

### Data Downloads and Footnotes

Expand each accordion to view data table and download data

[View Historic Wastewater Data](#)

### Data Table for Wastewater Surveillance Current Virus Levels (in %)

CDC | Data as of: Thursday, January 5, 2023 6:10 PM ET. Posted: Thursday, January 5, 2023 8:33 PM ET

Do

| Jurisdiction | Sewershed ID | Reporting Jurisdiction | County    | Population Served |
|--------------|--------------|------------------------|-----------|-------------------|
| Alabama      | 1394         | Alabama                | Shelby    | 11,000            |
| Alabama      | 1464         | Alabama                | Lee       | 72,000            |
| Alabama      | 1778         | Alabama                | Marshall  | 9,000             |
| Alabama      | 1664         | Alabama                | Jefferson | 95,000            |
| Alabama      | 1688         | Alabama                | Jefferson | 77,000            |
| Alabama      | 1719         | Alabama                | Jefferson | 200,000           |
| Alabama      | 1333         | Alabama                | Colbert   | 19,000            |
| Alabama      | 1716         | Alabama                | Jefferson | 30,000            |
| Alabama      | 1718         | Alabama                | Jefferson | 225,000           |
| Alaska       | 1158         | Alaska                 | Anchorage | 15,000            |
| Alaska       | 1172         | Alaska                 | Anchorage | 200,000           |
| Alaska       | 1490         | Alaska                 | Juneau    | 10,000            |
| Alaska       | 1491         | Alaska                 | Juneau    | 20,000            |
| Arizona      | 1271         | Arizona                | Pima      | 23,000            |
| Arizona      | 1327         | Arizona                | Mohave    | 30,000            |

| Jurisdiction ⇅ | Sewershed ID ⇅ | Reporting Jurisdiction ⇅ | County ⇅             | Population Served ⇅ |
|----------------|----------------|--------------------------|----------------------|---------------------|
| Arizona        | 501            | Arizona                  | La Paz               | 3,500               |
| Arizona        | 808            | Arizona                  | Mohave               | 37,500              |
| Arizona        | 1054           | Arizona                  | Yuma                 | 10,873              |
| Arizona        | 1055           | Arizona                  | Yuma                 | 4,725               |
| Arizona        | 1212           | Arizona                  | Maricopa             | 64,521              |
| Arizona        | 1212           | Arizona                  | Maricopa             | 6,500               |
| Arizona        | 1334           | Arizona                  | Maricopa             | 150,000             |
| Arizona        | 1382           | Arizona                  | Maricopa             | 50,000              |
| Arizona        | 1383           | Arizona                  | Maricopa             | 2,400,000           |
| Arizona        | 590            | Arizona                  | Pima                 | 347,900             |
| Arizona        | 715            | Arizona                  | Pima                 | 397,407             |
| Arizona        | 1053           | Arizona                  | Yuma                 | 8,271               |
| Arizona        | 1059           | Arizona                  | Yuma                 | 18,039              |
| Arizona        | 1212           | Arizona                  | Maricopa             | 17,280              |
| Arizona        | 1212           | Arizona                  | Maricopa             | 9,430               |
| Arizona        | 1212           | Arizona                  | Maricopa             | 9,848               |
| Arizona        | 1212           | Arizona                  | Maricopa             | 12,542              |
| Arkansas       | 1461           | Arkansas                 | Saline               | 35,000              |
| Arkansas       | 1509           | Arkansas                 | White                | 25,000              |
| Arkansas       | 1536           | Arkansas                 | Greene               | 29,000              |
| Arkansas       | 1537           | Arkansas                 | Benton               | 17,737              |
| Arkansas       | 1544           | Arkansas                 | Garland              | 92,000              |
| Arkansas       | 1565           | Arkansas                 | Ouachita             | 10,200              |
| Arkansas       | 446            | Arkansas                 | Pulaski              | 32,043              |
| Arkansas       | 741            | Arkansas                 | Mississippi          | 5,500               |
| Arkansas       | 1442           | Arkansas                 | Lonoke               | 27,000              |
| Arkansas       | 1444           | Arkansas                 | Pulaski              | 5,000               |
| Arkansas       | 1462           | Arkansas                 | Washington           | 93,949              |
| Arkansas       | 1465           | Arkansas                 | Washington           | 93,949              |
| Arkansas       | 1472           | Arkansas                 | Saint Francis        | 13,000              |
| Arkansas       | 1540           | Arkansas                 | Boone                | 14,000              |
| Arkansas       | 1542           | Arkansas                 | Pulaski              | 30,377              |
| Arkansas       | 1543           | Arkansas                 | Pulaski              | 23,812              |
| Arkansas       | 1545           | Arkansas                 | Pulaski              | 28,500              |
| Arkansas       | 1546           | Arkansas                 | Pulaski              | 18,463              |
| Arkansas       | 1548           | Arkansas                 | Jefferson            | 42,323              |
| Arkansas       | 1550           | Arkansas                 | Pope                 | 31,000              |
| Arkansas       | 1558           | Arkansas                 | Hempstead            | 10,500              |
| California     | 1219           | California               | Lake                 | 5,000               |
| California     | 1288           | California               | El Dorado            | 40,000              |
| California     | 1320           | California               | Ventura              | 230,000             |
| California     | 1387           | California               | Monterey             | 250,000             |
| California     | 1443           | California               | Imperial             | 50,000              |
| California     | 1561           | California               | San Luis Obispo      | 6,500               |
| California     | 495            | California               | Santa Cruz           | 60,000              |
| California     | 506            | California               | Los Angeles, Ventura | 100,000             |
| California     | 564            | California               | Alameda              | 60,000              |
| California     | 570            | California               | Sonoma               | 220,000             |
| California     | 724            | California               | Contra Costa         | 215,394             |

| Jurisdiction ⇅ | Sewershed ID ⇅ | Reporting Jurisdiction ⇅ | County ⇅                 | Population Served ⇅ |
|----------------|----------------|--------------------------|--------------------------|---------------------|
| California     | 778            | California               | Lake                     | 10,080              |
| California     | 793            | California               | San Luis Obispo          | 39,000              |
| California     | 802            | California               | Santa Cruz               | 85,000              |
| California     | 803            | California               | Santa Cruz               | 150,000             |
| California     | 1188           | California               | Ventura                  | 220,000             |
| California     | 1361           | California               | Stanislaus               | 86,000              |
| California     | 1365           | California               | Yolo                     | 3,272               |
| California     | 1371           | California               | Merced                   | 42,000              |
| California     | 1372           | California               | Merced                   | 91,000              |
| California     | 1513           | California               | Kern                     | 279,023             |
| California     | 215            | California               | Los Angeles, Ventura     | 4,000,000           |
| California     | 299            | California               | Orange                   | 1,800,000           |
| California     | 352            | California               | Santa Clara              | 110,338             |
| California     | 356            | California               | San Bernardino           | 325,000             |
| California     | 357            | California               | San Diego                | 2,200,000           |
| California     | 363            | California               | San Mateo, San Francisco | 750,000             |
| California     | 363            | California               | San Mateo, San Francisco | 750,000             |
| California     | 383            | California               | Sacramento               | 1,480,000           |
| California     | 393            | California               | San Mateo                | 199,000             |
| California     | 77             | California               | Imperial                 | 40,000              |
| California     | 88             | California               | Contra Costa             | 487,300             |
| California     | 1371           | California               | Merced                   | 42,000              |
| California     | 1665           | California               | San Mateo                | 40,000              |
| California     | 1668           | California               | Contra Costa             | 484,800             |
| California     | 1669           | California               | Marin                    | 104,250             |
| California     | 1670           | California               | Marin                    | 25,000              |
| California     | 1676           | California               | San Luis Obispo          | 31,037              |
| California     | 1677           | California               | San Mateo                | 150,000             |
| California     | 1678           | California               | Santa Cruz               | 160,000             |
| California     | 1679           | California               | Santa Cruz               | 160,000             |
| California     | 1685           | California               | Alameda                  | 740,000             |
| California     | 1687           | California               | Sonoma                   | 65,000              |
| California     | 1693           | California               | Los Angeles              | 3,500,000           |
| California     | 1694           | California               | Los Angeles              | 200,000             |
| California     | 1698           | California               | Santa Barbara            | 69,290              |
| California     | 1709           | California               | San Bernardino           | 890,000             |
| California     | 1711           | California               | Marin                    | 18,000              |
| California     | 1712           | California               | San Mateo                | 28,000              |
| California     | 1713           | California               | Napa                     | 83,300              |
| California     | 1717           | California               | Solano                   | 121,000             |
| California     | 1720           | California               | Contra Costa             | 100,000             |
| California     | 1733           | California               | Alameda                  | 47,229              |
| California     | 1734           | California               | Alameda                  | 68,150              |
| California     | 1785           | California               | San Diego                | 1,600,000           |
| California     | 1789           | California               | Orange                   | 48,000              |
| California     | 1792           | California               | Orange                   | 129,000             |
| California     | 834            | California               | Riverside                | 91,765              |
| California     | 1173           | California               | Contra Costa             | 494,300             |
| California     | 1199           | California               | Kings                    | 59,000              |

| Jurisdiction ⇅ | Sewershed ID ⇅ | Reporting Jurisdiction ⇅ | County ⇅                 | Population Served ⇅ |
|----------------|----------------|--------------------------|--------------------------|---------------------|
| California     | 1209           | California               | Marin                    | 13,000              |
| California     | 1230           | California               | San Luis Obispo          | 47,400              |
| California     | 1409           | California               | San Bernardino           | 78,000              |
| California     | 1560           | California               | San Luis Obispo          | 14,276              |
| California     | 1593           | California               | San Luis Obispo          | 6,500               |
| California     | 1759           | California               | San Luis Obispo          | 15,200              |
| California     | 461            | California               | Humboldt                 | 43,173              |
| California     | 763            | California               | Santa Cruz               | 160,000             |
| California     | 779            | California               | Los Angeles              | 200,000             |
| California     | 834            | California               | Riverside                | 91,765              |
| California     | 1019           | California               | Lake                     | 13,200              |
| California     | 126            | California               | Yolo                     | 70,717              |
| California     | 1373           | California               | Stanislaus               | 230,000             |
| California     | 1377           | California               | Yolo                     | 7,285               |
| California     | 1378           | California               | Yolo                     | 59,000              |
| California     | 137            | California               | Alameda, Contra Costa    | 740,000             |
| California     | 1524           | California               | Plumas                   | 4,217               |
| California     | 158            | California               | Fresno                   | 650,000             |
| California     | 211            | California               | Los Angeles              | 3,500,000           |
| California     | 305            | California               | Santa Clara              | 236,000             |
| California     | 353            | California               | Santa Clara              | 1,500,000           |
| California     | 354            | California               | Santa Clara              | 153,000             |
| California     | 362            | California               | San Francisco, San Mateo | 250,000             |
| California     | 362            | California               | San Mateo, San Francisco | 210,000             |
| California     | 59             | California               | Kern                     | 168,750             |
| California     | 1674           | California               | San Benito               | 42,000              |
| California     | 1680           | California               | Sonoma                   | 230,000             |
| California     | 1684           | California               | San Diego                | 2,200,000           |
| California     | 1690           | California               | Los Angeles              | 4,000,000           |
| California     | 1695           | California               | Marin                    | 30,000              |
| California     | 1703           | California               | Marin                    | 53,000              |
| California     | 1732           | California               | Alameda                  | 229,476             |
| California     | 1756           | California               | Monterey                 | 262,000             |
| California     | 1760           | California               | Yolo                     | 4,006               |
| California     | 1766           | California               | Yolo                     | 7,286               |
| California     | 1784           | California               | Marin                    | 30,000              |
| California     | 1790           | California               | Orange                   | 120,000             |
| California     | 1793           | California               | Sonoma                   | 28,000              |
| Colorado       | 1290           | Colorado                 | Garfield                 | 7,300               |
| Colorado       | 1156           | Colorado                 | Pitkin                   | 5,714               |
| Colorado       | 1407           | Colorado                 | San Juan                 | 3,000               |
| Colorado       | 142            | Colorado                 | Larimer                  | 5,818               |
| Colorado       | 1451           | Colorado                 | Chaffee                  | 19,286              |
| Colorado       | 150            | Colorado                 | Larimer                  | 17,997              |
| Colorado       | 1515           | Colorado                 | El Paso                  | 4,779               |
| Colorado       | 1525           | Colorado                 | Weld                     | 13,779              |
| Colorado       | 1588           | Colorado                 | Douglas                  | 14,286              |
| Colorado       | 1592           | Colorado                 | Montrose                 | 30,857              |
| Colorado       | 161            | Colorado                 | Garfield                 | 16,714              |

| Jurisdiction ⇅ | Sewershed ID ⇅ | Reporting Jurisdiction ⇅ | County ⇅         | Population Served ⇅ |
|----------------|----------------|--------------------------|------------------|---------------------|
| Colorado       | 1748           | Colorado                 | Delta            | 6,857               |
| Colorado       | 226            | Colorado                 | Boulder          | 17,600              |
| Colorado       | 227            | Colorado                 | Larimer          | 66,428              |
| Colorado       | 252            | Colorado                 | Denver           | 709,904             |
| Colorado       | 329            | Colorado                 | Pueblo           | 96,514              |
| Colorado       | 396            | Colorado                 | San Miguel       | 15,000              |
| Colorado       | 437            | Colorado                 | Larimer          | 9,292               |
| Colorado       | 47             | Colorado                 | Pitkin           | 5,500               |
| Colorado       | 556            | Colorado                 | Morgan           | 12,000              |
| Colorado       | 576            | Colorado                 | Routt            | 43,741              |
| Colorado       | 657            | Colorado                 | Summit           | 28,571              |
| Colorado       | 737            | Colorado                 | Alamosa          | 18,364              |
| Colorado       | 749            | Colorado                 | Eagle            | 21,071              |
| Colorado       | 751            | Colorado                 | Mesa             | 89,286              |
| Colorado       | 846            | Colorado                 | Gunnison         | 30,000              |
| Colorado       | 928            | Colorado                 | Weld             | 20,000              |
| Colorado       | 1704           | Colorado                 | Douglas          | 35,000              |
| Colorado       | 1705           | Colorado                 | Douglas          | 25,000              |
| Colorado       | 1111           | Colorado                 | Teller           | 7,143               |
| Colorado       | 1135           | Colorado                 | Teller           | 6,379               |
| Colorado       | 1154           | Colorado                 | Pitkin           | 17,571              |
| Colorado       | 116            | Colorado                 | El Paso          | 102,203             |
| Colorado       | 117            | Colorado                 | El Paso          | 303,855             |
| Colorado       | 122            | Colorado                 | Summit           | 7,857               |
| Colorado       | 1514           | Colorado                 | El Paso          | 5,936               |
| Colorado       | 1517           | Colorado                 | El Paso          | 19,286              |
| Colorado       | 1518           | Colorado                 | El Paso          | 19,286              |
| Colorado       | 151            | Colorado                 | Larimer          | 92,126              |
| Colorado       | 152            | Colorado                 | Larimer          | 26,621              |
| Colorado       | 1563           | Colorado                 | Elbert           | 3,571               |
| Colorado       | 1591           | Colorado                 | Otero            | 29,643              |
| Colorado       | 163            | Colorado                 | Weld             | 83,319              |
| Colorado       | 224            | Colorado                 | Boulder, Weld    | 75,543              |
| Colorado       | 251            | Colorado                 | Denver           | 345,453             |
| Colorado       | 368            | Colorado                 | Adams            | 54,560              |
| Colorado       | 370            | Colorado                 | Larimer          | 23,193              |
| Colorado       | 372            | Colorado                 | Arapahoe, Denver | 247,443             |
| Colorado       | 408            | Colorado                 | Summit           | 35,643              |
| Colorado       | 49             | Colorado                 | Arapahoe, Adams  | 268,003             |
| Colorado       | 578            | Colorado                 | Las Animas       | 14,286              |
| Colorado       | 58             | Colorado                 | Weld, Larimer    | 7,946               |
| Colorado       | 656            | Colorado                 | La Plata         | 23,429              |
| Colorado       | 66             | Colorado                 | Boulder          | 89,383              |
| Colorado       | 72             | Colorado                 | Broomfield       | 53,355              |
| Colorado       | 747            | Colorado                 | Arapahoe         | 25,714              |
| Colorado       | 748            | Colorado                 | El Paso          | 34,286              |
| Colorado       | 841            | Colorado                 | Adams            | 21,429              |
| Colorado       | 843            | Colorado                 | Eagle            | 30,714              |
| Colorado       | 844            | Colorado                 | Eagle            | 19,286              |



| Jurisdiction ⇅       | Sewershed ID ⇅ | Reporting Jurisdiction ⇅ | County ⇅             | Population Served ⇅ |
|----------------------|----------------|--------------------------|----------------------|---------------------|
| Colorado             | 845            | Colorado                 | Summit               | 14,286              |
| Colorado             | 887            | Colorado                 | Summit               | 18,571              |
| Connecticut          | 1079           | Connecticut              | New Haven            | 228,000             |
| Connecticut          | 1196           | Connecticut              | New Haven            | 19,500              |
| Connecticut          | 1395           | Connecticut              | Fairfield            | 52,265              |
| Connecticut          | 1612           | Connecticut              | Windham              | 10,000              |
| Connecticut          | 1618           | Connecticut              | Hartford             | 25,000              |
| Connecticut          | 291            | Connecticut              | Fairfield            | 75,000              |
| Connecticut          | 771            | Connecticut              | Fairfield            | 120,000             |
| Connecticut          | 806            | Connecticut              | Fairfield            | 65,000              |
| Connecticut          | 1163           | Connecticut              | New London           | 22,000              |
| Connecticut          | 534            | Connecticut              | Fairfield            | 100,000             |
| Connecticut          | 686            | Connecticut              | New Haven            | 112,000             |
| Connecticut          | 832            | Connecticut              | New London           | 40,000              |
| Delaware             | 1184           | Delaware                 | Kent                 | 130,000             |
| Delaware             | 1186           | Delaware                 | Sussex               | 4,050               |
| Delaware             | 1191           | Delaware                 | Sussex               | 75,000              |
| Delaware             | 1183           | Delaware                 | Sussex               | 7,000               |
| Delaware             | 1185           | Delaware                 | Sussex               | 4,392               |
| Delaware             | 1187           | Delaware                 | New Castle           | 17,145              |
| Delaware             | 1192           | Delaware                 | Sussex               | 7,000               |
| Delaware             | 1194           | Delaware                 | New Castle           | 539,000             |
| District of Columbia | 486            | District of Columbia     | District Of Columbia | 1,600,000           |
| Florida              | 1392           | Florida                  | Hillsborough         | 180,000             |
| Florida              | 1408           | Florida                  | Orange, Seminole     | 85,700              |
| Florida              | 1501           | Florida                  | Alachua              | 100,000             |
| Florida              | 1502           | Florida                  | Alachua              | 100,000             |
| Florida              | 1551           | Florida                  | Palm Beach           | 300,000             |
| Florida              | 1552           | Florida                  | Leon                 | 200,000             |
| Florida              | 1631           | Florida                  | Orange               | 50,000              |
| Florida              | 511            | Florida                  | Pinellas             | 103,000             |
| Florida              | 574            | Florida                  | Pinellas             | 220,000             |
| Florida              | 706            | Florida                  | Escambia             | 197,000             |
| Florida              | 1144           | Florida                  | Orange, Seminole     | 51,000              |
| Florida              | 1145           | Florida                  | Seminole             | 43,010              |
| Florida              | 1686           | Florida                  | Orange               | 195,299             |
| Florida              | 1702           | Florida                  | Orange               | 66,690              |
| Florida              | 1715           | Florida                  | Orange               | 183,009             |
| Florida              | 1410           | Florida                  | Palm Beach, Martin   | 96,136              |
| Florida              | 1606           | Florida                  | Lee                  | 76,800              |
| Florida              | 1613           | Florida                  | Sarasota             | 100,000             |
| Florida              | 668            | Florida                  | Miami-Dade           | 920,528             |
| Florida              | 669            | Florida                  | Orange               | 277,823             |
| Florida              | 670            | Florida                  | Orange               | 59,587              |
| Florida              | 671            | Florida                  | Orange               | 463,672             |
| Florida              | 711            | Florida                  | Miami-Dade           | 829,725             |
| Florida              | 781            | Florida                  | Miami-Dade           | 776,150             |
| Florida              | 1631           | Florida                  | Orange               | 50,000              |

| Jurisdiction ⇅ | Sewershed ID ⇅ | Reporting Jurisdiction ⇅ | County ⇅                | Population Served ⇅ |
|----------------|----------------|--------------------------|-------------------------|---------------------|
| Florida        | 1699           | Florida                  | Palm Beach              | 90,000              |
| Florida        | 1735           | Florida                  | Seminole                | 95,000              |
| Georgia        | 1109           | Georgia                  | Lowndes                 | 65,000              |
| Georgia        | 684            | Georgia                  | Dekalb                  | 325,000             |
| Georgia        | 1072           | Georgia                  | Gwinnett                | 650,000             |
| Georgia        | 1074           | Georgia                  | Paulding                | 8,000               |
| Georgia        | 1169           | Georgia                  | Clarke                  | 56,500              |
| Georgia        | 1724           | Georgia                  | Forsyth                 | 36,500              |
| Georgia        | 1666           | Georgia                  | Fulton                  | 73,821              |
| Georgia        | 1692           | Georgia                  | Fulton                  | 84,486              |
| Georgia        | 1714           | Georgia                  | Chattahoochee, Muscogee | 278,000             |
| Georgia        | 1740           | Georgia                  | Fulton                  | 94,000              |
| Georgia        | 1741           | Georgia                  | Fulton                  | 94,000              |
| Georgia        | 1742           | Georgia                  | Fulton                  | 94,000              |
| Georgia        | 476            | Georgia                  | Richmond                | 197,191             |
| Georgia        | 1071           | Georgia                  | Paulding                | 10,000              |
| Georgia        | 1073           | Georgia                  | Cobb                    | 190,000             |
| Georgia        | 1309           | Georgia                  | Newton                  | 32,000              |
| Georgia        | 1723           | Georgia                  | Laurens                 | 17,000              |
| Georgia        | 1728           | Georgia                  | Cobb                    | 190,000             |
| Georgia        | 1747           | Georgia                  | Lowndes                 | 19,400              |
| Georgia        | 1663           | Georgia                  | Fulton                  | 189,593             |
| Georgia        | 1697           | Georgia                  | Fulton                  | 12,818              |
| Guam           | 1440           | Guam                     | Guam                    | 66,000              |
| Guam           | 1446           | Guam                     | Guam                    | 8,000               |
| Guam           | 1448           | Guam                     | Guam                    | 105,000             |
| Guam           | 1441           | Guam                     | Guam                    | 9,000               |
| Guam           | 1450           | Guam                     | Guam                    | 7,000               |
| Hawaii         | 1175           | Hawaii                   | Maui                    | 52,000              |
| Hawaii         | 790            | Hawaii                   | Honolulu                | 700,000             |
| Hawaii         | 798            | Hawaii                   | Honolulu                | 48,519              |
| Hawaii         | 1181           | Hawaii                   | Maui                    | 59,000              |
| Hawaii         | 1203           | Hawaii                   | Honolulu                | 300,000             |
| Hawaii         | 1204           | Hawaii                   | Honolulu                | 109,236             |
| Hawaii         | 1205           | Hawaii                   | Maui                    | 49,000              |
| Hawaii         | 1208           | Hawaii                   | Honolulu                | 20,800              |
| Hawaii         | 1221           | Hawaii                   | Hawaii                  | 32,600              |
| Hawaii         | 1337           | Hawaii                   | Hawaii                  | 5,000               |
| Hawaii         | 710            | Hawaii                   | Kauai                   | 10,000              |
| Idaho          | 1023           | Idaho                    | Latah                   | 24,000              |
| Idaho          | 1066           | Idaho                    | Bonneville              | 60,000              |
| Idaho          | 1129           | Idaho                    | Kootenai                | 38,500              |
| Idaho          | 1227           | Idaho                    | Bannock                 | 75,000              |
| Idaho          | 1347           | Idaho                    | Minidoka                | 6,200               |
| Idaho          | 992            | Idaho                    | Ada                     | 167,500             |
| Idaho          | 1672           | Idaho                    | Kootenai                | 50,540              |
| Idaho          | 1067           | Idaho                    | Twin Falls              | 48,951              |
| Idaho          | 1225           | Idaho                    | Bingham                 | 14,045              |
| Idaho          | 1228           | Idaho                    | Caribou                 | 3,200               |

| Jurisdiction ⇅ | Sewershed ID ⇅ | Reporting Jurisdiction ⇅ | County ⇅    | Population Served ⇅ |
|----------------|----------------|--------------------------|-------------|---------------------|
| Idaho          | 1249           | Idaho                    | Blaine      | 5,338               |
| Idaho          | 1406           | Idaho                    | Elmore      | 5,500               |
| Idaho          | 818            | Idaho                    | Ada         | 120,344             |
| Illinois       | 546            | Illinois                 | Kankakee    | 65,000              |
| Illinois       | 682            | Illinois                 | Cook        | 265,000             |
| Illinois       | 683            | Illinois                 | Cook        | 161,000             |
| Illinois       | 1062           | Illinois                 | Kendall     | 320,000             |
| Illinois       | 1100           | Illinois                 | Du Page     | 40,438              |
| Illinois       | 1246           | Illinois                 | Du Page     | 65,000              |
| Illinois       | 1247           | Illinois                 | Lake        | 80,000              |
| Illinois       | 1252           | Illinois                 | Du Page     | 59,805              |
| Illinois       | 1316           | Illinois                 | Will        | 50,244              |
| Illinois       | 1326           | Illinois                 | Saint Clair | 85,593              |
| Illinois       | 1586           | Illinois                 | Mchenry     | 15,360              |
| Illinois       | 1609           | Illinois                 | Du Page     | 45,000              |
| Illinois       | 462            | Illinois                 | Winnebago   | 353,599             |
| Illinois       | 602            | Illinois                 | Union       | 4,442               |
| Illinois       | 604            | Illinois                 | Cass        | 5,446               |
| Illinois       | 616            | Illinois                 | Christian   | 12,663              |
| Illinois       | 617            | Illinois                 | Mchenry     | 78,261              |
| Illinois       | 622            | Illinois                 | Effingham   | 12,384              |
| Illinois       | 623            | Illinois                 | Clay        | 5,100               |
| Illinois       | 624            | Illinois                 | Stephenson  | 27,218              |
| Illinois       | 626            | Illinois                 | Knox        | 39,153              |
| Illinois       | 627            | Illinois                 | Morgan      | 23,818              |
| Illinois       | 628            | Illinois                 | Kankakee    | 56,317              |
| Illinois       | 635            | Chicago                  | Cook        | 23,475              |
| Illinois       | 635            | Illinois                 | Cook        | 1,134,897           |
| Illinois       | 636            | Illinois                 | Cook        | 110,394             |
| Illinois       | 637            | Illinois                 | Cook        | 13,098              |
| Illinois       | 639            | Illinois                 | Cook        | 1,127,736           |
| Illinois       | 641            | Illinois                 | Cook        | 217,106             |
| Illinois       | 643            | Illinois                 | Lake        | 55,735              |
| Illinois       | 644            | Illinois                 | Lake        | 105,208             |
| Illinois       | 645            | Illinois                 | Lake        | 126,629             |
| Illinois       | 649            | Illinois                 | Bureau      | 7,555               |
| Illinois       | 650            | Illinois                 | Adams       | 50,695              |
| Illinois       | 651            | Illinois                 | Carroll     | 5,615               |
| Illinois       | 652            | Illinois                 | Shelby      | 5,329               |
| Illinois       | 653            | Illinois                 | Macoupin    | 4,480               |
| Illinois       | 654            | Illinois                 | Whiteside   | 18,678              |
| Illinois       | 674            | Chicago                  | Cook        | 23,324              |
| Illinois       | 674            | Chicago                  | Cook        | 54,362              |
| Illinois       | 675            | Chicago                  | Cook        | 77,799              |
| Illinois       | 731            | Illinois                 | Bureau      | 5,400               |
| Illinois       | 857            | Illinois                 | Lawrence    | 4,399               |
| Illinois       | 983            | Illinois                 | Mchenry     | 15,000              |
| Illinois       | 984            | Illinois                 | Du Page     | 18,800              |
| Illinois       | 1689           | Illinois                 | Du Page     | 86,000              |

| Jurisdiction ⇅ | Sewershed ID ⇅ | Reporting Jurisdiction ⇅ | County ⇅    | Population Served ⇅ |
|----------------|----------------|--------------------------|-------------|---------------------|
| Illinois       | 462            | Illinois                 | Winnebago   | 240,000             |
| Illinois       | 546            | Illinois                 | Kankakee    | 65,000              |
| Illinois       | 1243           | Illinois                 | Du Page     | 76,324              |
| Illinois       | 1244           | Illinois                 | Du Page     | 86,000              |
| Illinois       | 1527           | Illinois                 | Kendall     | 13,477              |
| Illinois       | 1587           | Illinois                 | Mchenry     | 10,240              |
| Illinois       | 1610           | Illinois                 | Washington  | 3,425               |
| Illinois       | 603            | Illinois                 | Kane        | 11,290              |
| Illinois       | 605            | Illinois                 | Saint Clair | 26,150              |
| Illinois       | 606            | Illinois                 | Saint Clair | 26,150              |
| Illinois       | 607            | Illinois                 | Boone       | 25,134              |
| Illinois       | 611            | Illinois                 | Fulton      | 13,506              |
| Illinois       | 612            | Illinois                 | Greene      | 3,064               |
| Illinois       | 619            | Illinois                 | Vermilion   | 30,479              |
| Illinois       | 620            | Illinois                 | Macon       | 88,500              |
| Illinois       | 621            | Illinois                 | Perry       | 6,448               |
| Illinois       | 625            | Illinois                 | Jo Daviess  | 3,460               |
| Illinois       | 631            | Illinois                 | Mcdonough   | 22,004              |
| Illinois       | 632            | Illinois                 | Cook        | 270,647             |
| Illinois       | 633            | Illinois                 | Warren      | 10,836              |
| Illinois       | 634            | Illinois                 | Jefferson   | 21,169              |
| Illinois       | 635            | Chicago                  | Cook        | 3,816               |
| Illinois       | 638            | Illinois                 | Cook        | 1,127,737           |
| Illinois       | 642            | Illinois                 | Du Page     | 128,358             |
| Illinois       | 647            | Illinois                 | Peoria      | 157,379             |
| Illinois       | 655            | Illinois                 | Champaign   | 91,041              |
| Illinois       | 675            | Chicago                  | Cook        | 29,370              |
| Illinois       | 675            | Chicago                  | Cook        | 83,455              |
| Illinois       | 675            | Chicago                  | Cook        | 24,099              |
| Illinois       | 697            | Illinois                 | Rock Island | 25,202              |
| Illinois       | 698            | Illinois                 | Rock Island | 43,768              |
| Illinois       | 699            | Illinois                 | Tazewell    | 30,997              |
| Illinois       | 871            | Illinois                 | La Salle    | 18,307              |
| Illinois       | 894            | Illinois                 | Lee         | 15,115              |
| Illinois       | 972            | Illinois                 | Saint Clair | 32,289              |
| Illinois       | 978            | Illinois                 | Mclean      | 42,000              |
| Illinois       | 979            | Illinois                 | Mclean      | 44,238              |
| Illinois       | 980            | Illinois                 | Mclean      | 44,237              |
| Illinois       | 981            | Illinois                 | De Kalb     | 43,862              |
| Illinois       | 982            | Illinois                 | Cook        | 1,263,110           |
| Illinois       | 1721           | Illinois                 | Du Page     | 63,000              |
| Indiana        | 1267           | Indiana                  | Kosciusko   | 21,600              |
| Indiana        | 1273           | Indiana                  | Dubois      | 16,000              |
| Indiana        | 1289           | Indiana                  | Vigo        | 58,500              |
| Indiana        | 1350           | Indiana                  | Allen       | 315,000             |
| Indiana        | 1352           | Indiana                  | Jefferson   | 16,000              |
| Indiana        | 828            | Indiana                  | Hamilton    | 86,000              |
| Indiana        | 1456           | Indiana                  | Clark       | 21,000              |
| Indiana        | 1459           | Indiana                  | Jasper      | 5,800               |

| Jurisdiction ⇅ | Sewershed ID ⇅ | Reporting Jurisdiction ⇅ | County ⇅    | Population Served ⇅ |
|----------------|----------------|--------------------------|-------------|---------------------|
| Indiana        | 1479           | Indiana                  | Elkhart     | 35,000              |
| Indiana        | 1481           | Indiana                  | Marion      | 14,000              |
| Indiana        | 1619           | Indiana                  | Marion      | 800,000             |
| Indiana        | 1681           | Indiana                  | St Joseph   | 130,000             |
| Indiana        | 1739           | Indiana                  | Clark       | 25,000              |
| Indiana        | 772            | Indiana                  | Monroe      | 56,090              |
| Indiana        | 1162           | Indiana                  | Hamilton    | 98,000              |
| Indiana        | 1269           | Indiana                  | Lake        | 28,000              |
| Indiana        | 1281           | Indiana                  | Delaware    | 67,000              |
| Indiana        | 1293           | Indiana                  | St Joseph   | 130,000             |
| Indiana        | 1314           | Indiana                  | Wayne       | 36,000              |
| Indiana        | 1318           | Indiana                  | Huntington  | 17,612              |
| Indiana        | 1319           | Indiana                  | Howard      | 45,000              |
| Indiana        | 678            | Indiana                  | Bartholomew | 49,000              |
| Indiana        | 765            | Indiana                  | Monroe      | 28,350              |
| Indiana        | 772            | Indiana                  | Monroe      | 67,500              |
| Indiana        | 1458           | Indiana                  | Noble       | 10,000              |
| Indiana        | 1480           | Indiana                  | Rush        | 6,208               |
| Indiana        | 1482           | Indiana                  | Porter      | 36,000              |
| Indiana        | 1738           | Indiana                  | Clark       | 25,000              |
| Iowa           | 1303           | Iowa                     | Woodbury    | 102,000             |
| Iowa           | 1447           | Iowa                     | Mahaska     | 5,201               |
| Iowa           | 1449           | Iowa                     | Mahaska     | 6,357               |
| Iowa           | 544            | Iowa                     | Johnson     | 75,849              |
| Iowa           | 105            | Iowa                     | Johnson     | 21,000              |
| Iowa           | 1496           | Iowa                     | Winneshiek  | 8,500               |
| Iowa           | 1783           | Iowa                     | Muscatine   | 24,400              |
| Iowa           | 1791           | Iowa                     | Wapello     | 25,529              |
| Kansas         | 1299           | Kansas                   | Johnson     | 112,076             |
| Kansas         | 1300           | Kansas                   | Johnson     | 42,235              |
| Kansas         | 1304           | Kansas                   | Johnson     | 73,829              |
| Kansas         | 807            | Kansas                   | Ford        | 27,000              |
| Kansas         | 833            | Kansas                   | Shawnee     | 50,000              |
| Kansas         | 1710           | Kansas                   | Saline      | 47,000              |
| Kansas         | 1292           | Kansas                   | Johnson     | 66,377              |
| Kansas         | 1305           | Kansas                   | Johnson     | 54,985              |
| Kansas         | 472            | Kansas                   | Reno        | 40,000              |
| Kansas         | 787            | Kansas                   | Shawnee     | 90,000              |
| Kansas         | 1696           | Kansas                   | Douglas     | 800,000             |
| Kentucky       | 1207           | Kentucky                 | Carroll     | 3,000               |
| Kentucky       | 1253           | Kentucky                 | Boyd        | 32,575              |
| Kentucky       | 1257           | Kentucky                 | Magoffin    | 3,508               |
| Kentucky       | 1579           | Kentucky                 | Franklin    | 36,137              |
| Kentucky       | 1581           | Kentucky                 | Jessamine   | 31,038              |
| Kentucky       | 1771           | Kentucky                 | Russell     | 6,483               |
| Kentucky       | 1772           | Kentucky                 | Mccreary    | 6,255               |
| Kentucky       | 1773           | Kentucky                 | Powell      | 4,603               |
| Kentucky       | 902            | Kentucky                 | Jefferson   | 295,910             |
| Kentucky       | 903            | Kentucky                 | Jefferson   | 32,460              |

| Jurisdiction ⇅ | Sewershed ID ⇅ | Reporting Jurisdiction ⇅ | County ⇅         | Population Served ⇅ |
|----------------|----------------|--------------------------|------------------|---------------------|
| Kentucky       | 904            | Kentucky                 | Jefferson        | 31,269              |
| Kentucky       | 905            | Kentucky                 | Jefferson        | 349,850             |
| Kentucky       | 1701           | Kentucky                 | Jefferson        | 423,913             |
| Kentucky       | 810            | Kentucky                 | Estill           | 5,000               |
| Kentucky       | 1254           | Kentucky                 | Rowan            | 15,212              |
| Kentucky       | 1255           | Kentucky                 | Johnson          | 5,258               |
| Kentucky       | 1580           | Kentucky                 | Christian        | 33,426              |
| Kentucky       | 1582           | Kentucky                 | Caldwell         | 6,108               |
| Kentucky       | 1583           | Kentucky                 | Allen            | 4,557               |
| Kentucky       | 1767           | Kentucky                 | Lee              | 3,138               |
| Kentucky       | 1770           | Kentucky                 | Christian        | 33,426              |
| Kentucky       | 901            | Kentucky                 | Jefferson        | 55,928              |
| Louisiana      | 1107           | Louisiana                | East Baton Rouge | 262,326             |
| Louisiana      | 1116           | Louisiana                | East Baton Rouge | 99,712              |
| Louisiana      | 1229           | Louisiana                | Rapides          | 60,000              |
| Louisiana      | 1615           | Louisiana                | Saint Tammany    | 15,000              |
| Louisiana      | 1626           | Louisiana                | Jefferson        | 100,000             |
| Louisiana      | 1633           | Louisiana                | Lafayette        | 40,000              |
| Louisiana      | 1650           | Louisiana                | Lafayette        | 27,000              |
| Louisiana      | 1651           | Louisiana                | Lafayette        | 10,000              |
| Louisiana      | 1652           | Louisiana                | Lafayette        | 47,000              |
| Louisiana      | 1659           | Louisiana                | Jefferson        | 100,000             |
| Louisiana      | 727            | Louisiana                | Orleans          | 998,000             |
| Louisiana      | 1497           | Louisiana                | Jefferson        | 300,000             |
| Louisiana      | 1614           | Louisiana                | Jefferson        | 65,364              |
| Louisiana      | 1632           | Louisiana                | Iberia           | 20,000              |
| Louisiana      | 1656           | Louisiana                | Jefferson        | 100,000             |
| Louisiana      | 792            | Louisiana                | Orleans          | 389,000             |
| Maine          | 1206           | Maine                    | York             | 21,000              |
| Maine          | 560            | Maine                    | Sagadahoc        | 8,514               |
| Maine          | 716            | Maine                    | Cumberland       | 8,500               |
| Maine          | 1707           | Maine                    | Cumberland       | 65,000              |
| Maine          | 1754           | Maine                    | Cumberland       | 10,000              |
| Maine          | 347            | Maine                    | Knox             | 7,000               |
| Maine          | 475            | Maine                    | Piscataquis      | 900                 |
| Maine          | 484            | Maine                    | Franklin         | 2,750               |
| Maine          | 507            | Maine                    | Oxford           | 1,000               |
| Maine          | 65             | Maine                    | Lincoln          | 1,759               |
| Maryland       | 1261           | Maryland                 | Anne Arundel     | 91,000              |
| Maryland       | 1262           | Maryland                 | Anne Arundel     | 11,000              |
| Maryland       | 1284           | Maryland                 | Anne Arundel     | 78,000              |
| Maryland       | 1348           | Maryland                 | Charles          | 88,500              |
| Maryland       | 563            | Maryland                 | Wicomico         | 37,000              |
| Maryland       | 666            | Maryland                 | Allegany         | 45,000              |
| Maryland       | 1260           | Maryland                 | Anne Arundel     | 89,000              |
| Maryland       | 1268           | Maryland                 | Anne Arundel     | 150,000             |
| Maryland       | 1278           | Maryland                 | Anne Arundel     | 22,000              |
| Maryland       | 1285           | Maryland                 | Anne Arundel     | 13,000              |
| Maryland       | 547            | Maryland                 | Howard           | 270,000             |

| Jurisdiction ⇅ | Sewershed ID ⇅ | Reporting Jurisdiction ⇅ | County ⇅   | Population Served ⇅ |
|----------------|----------------|--------------------------|--|---------------------|
| Maryland       | 561            | Maryland                 | Washington                                       | 90,000              |
| Maryland       | 1782           | Maryland                 | Washington                                       | 90,000              |
| Massachusetts  | 1330           | Massachusetts            | Worcester  | 3,000               |
| Massachusetts  | 1495           | Massachusetts            | Worcester  | 42,000              |
| Massachusetts  | 470            | Massachusetts            | Hampden  | 55,000              |
| Massachusetts  | 1780           | Massachusetts            | Worcester, Norfolk, Suffolk, Plymouth, Middlesex | 2,400,000           |
| Massachusetts  | 1180           | Massachusetts            | Worcester  | 12,000              |
| Massachusetts  | 1311           | Massachusetts            | Bristol  | 100,000             |
| Massachusetts  | 1384           | Massachusetts            | Middlesex  | 180,000             |
| Michigan       | 1036           | Michigan                 | Allegan  | 5,500               |
| Michigan       | 1040           | Michigan                 | Ottawa   | 3,511               |
| Michigan       | 1049           | Michigan                 | Allegan  | 3,777               |
| Michigan       | 1050           | Michigan                 | Saint Joseph                                     | 10,681              |
| Michigan       | 1089           | Michigan                 | Chippewa   | 6,546               |
| Michigan       | 1090           | Michigan                 | Manistee   | 8,154               |
| Michigan       | 1090           | Michigan                 | Manistee   | 8,154               |
| Michigan       | 1090           | Michigan                 | Manistee   | 8,154               |
| Michigan       | 1093           | Michigan                 | Mackinac   | 3,460               |
| Michigan       | 1104           | Michigan                 | Mackinac   | 14,000              |
| Michigan       | 1105           | Michigan                 | Menominee  | 3,842               |
| Michigan       | 1106           | Michigan                 | Iosco  | 5,000               |
| Michigan       | 1119           | Michigan                 | Roscommon  | 5,398               |
| Michigan       | 1125           | Michigan                 | Marquette  | 3,500               |
| Michigan       | 1125           | Michigan                 | Marquette  | 25,000              |
| Michigan       | 1166           | Michigan                 | Huron  | 4,000               |
| Michigan       | 1214           | Michigan                 | Kent   | 40,000              |
| Michigan       | 1215           | Michigan                 | Kent   | 41,000              |
| Michigan       | 1216           | Michigan                 | Midland  | 40,000              |
| Michigan       | 1217           | Michigan                 | Kent   | 145,000             |
| Michigan       | 1239           | Michigan                 | Isabella   | 7,615               |
| Michigan       | 1585           | Michigan                 | Kent   | 7,000               |
| Michigan       | 1597           | Michigan                 | Mecosta  | 21,000              |
| Michigan       | 1627           | Michigan                 | Gogebic  | 6,500               |
| Michigan       | 1729           | Michigan                 | Macomb   | 99,970              |
| Michigan       | 1729           | Michigan                 | Macomb   | 37,570              |
| Michigan       | 1731           | Michigan                 | Macomb   | 3,900               |
| Michigan       | 761            | Michigan                 | Lenawee  | 8,680               |
| Michigan       | 762            | Michigan                 | Washtenaw  | 330,000             |
| Michigan       | 799            | Michigan                 | Washtenaw  | 150,000             |
| Michigan       | 822            | Michigan                 | Delta  | 12,600              |
| Michigan       | 861            | Michigan                 | Saginaw  | 40,000              |
| Michigan       | 888            | Michigan                 | Calhoun  | 70,000              |
| Michigan       | 889            | Michigan                 | Ottawa   | 11,057              |
| Michigan       | 890            | Michigan                 | Ottawa   | 11,955              |
| Michigan       | 891            | Michigan                 | Kalamazoo  | 9,709               |
| Michigan       | 891            | Michigan                 | Kalamazoo  | 6,703               |
| Michigan       | 891            | Michigan                 | Kalamazoo  | 3,416               |
| Michigan       | 891            | Michigan                 | Kalamazoo  | 45,976              |

| Jurisdiction ⇅ | Sewershed ID ⇅ | Reporting Jurisdiction ⇅ | County ⇅        | Population Served ⇅ |
|----------------|----------------|--------------------------|-----------------|---------------------|
| Michigan       | 891            | Michigan                 | Kalamazoo       | 11,246              |
| Michigan       | 891            | Michigan                 | Kalamazoo       | 31,189              |
| Michigan       | 891            | Michigan                 | Kalamazoo       | 194,170             |
| Michigan       | 895            | Michigan                 | Bay             | 34,000              |
| Michigan       | 897            | Michigan                 | Oakland, Macomb | 1,482,000           |
| Michigan       | 1671           | Michigan                 | Washtenaw       | 125,000             |
| Michigan       | 1018           | Michigan                 | Bay             | 20,000              |
| Michigan       | 1020           | Michigan                 | Dickinson       | 3,200               |
| Michigan       | 1039           | Michigan                 | Saint Joseph    | 7,623               |
| Michigan       | 1040           | Michigan                 | Ottawa          | 3,535               |
| Michigan       | 1040           | Michigan                 | Ottawa          | 11,200              |
| Michigan       | 1048           | Michigan                 | Calhoun         | 6,964               |
| Michigan       | 1086           | Michigan                 | Ottawa          | 20,000              |
| Michigan       | 1087           | Michigan                 | Genesee         | 72,240              |
| Michigan       | 1088           | Michigan                 | Ottawa          | 25,000              |
| Michigan       | 1091           | Michigan                 | Schoolcraft     | 3,412               |
| Michigan       | 1092           | Michigan                 | Chippewa        | 15,000              |
| Michigan       | 1096           | Michigan                 | Muskegon        | 125,000             |
| Michigan       | 1102           | Michigan                 | Dickinson       | 13,500              |
| Michigan       | 1121           | Michigan                 | Saginaw         | 6,300               |
| Michigan       | 1122           | Michigan                 | Otsego          | 3,670               |
| Michigan       | 1125           | Michigan                 | Marquette       | 3,500               |
| Michigan       | 1125           | Michigan                 | Marquette       | 4,500               |
| Michigan       | 1125           | Michigan                 | Marquette       | 4,500               |
| Michigan       | 1136           | Michigan                 | Clare           | 3,042               |
| Michigan       | 1138           | Michigan                 | Isabella        | 25,629              |
| Michigan       | 1155           | Michigan                 | Tuscola         | 3,000               |
| Michigan       | 1167           | Michigan                 | Kent            | 15,000              |
| Michigan       | 1168           | Michigan                 | Kent            | 68,000              |
| Michigan       | 1315           | Michigan                 | Macomb          | 135,000             |
| Michigan       | 1434           | Michigan                 | Ingham          | 22,500              |
| Michigan       | 1598           | Michigan                 | Wexford         | 10,450              |
| Michigan       | 1599           | Michigan                 | Eaton           | 9,074               |
| Michigan       | 1600           | Michigan                 | Mason           | 8,100               |
| Michigan       | 1729           | Michigan                 | Wayne           | 5,190               |
| Michigan       | 756            | Michigan                 | Kent            | 265,000             |
| Michigan       | 757            | Michigan                 | Jackson         | 90,000              |
| Michigan       | 800            | Michigan                 | Genesee         | 95,000              |
| Michigan       | 801            | Michigan                 | Grand Traverse  | 45,000              |
| Michigan       | 823            | Michigan                 | Houghton        | 14,000              |
| Michigan       | 860            | Michigan                 | Gratiot         | 8,976               |
| Michigan       | 874            | Michigan                 | Emmet           | 7,900               |
| Michigan       | 889            | Michigan                 | Ottawa          | 6,657               |
| Michigan       | 889            | Michigan                 | Ottawa          | 6,524               |
| Michigan       | 889            | Michigan                 | Ottawa          | 45,608              |
| Michigan       | 890            | Michigan                 | Ottawa          | 15,498              |
| Michigan       | 890            | Michigan                 | Ottawa          | 8,278               |
| Michigan       | 890            | Michigan                 | Ottawa          | 36,912              |
| Michigan       | 891            | Michigan                 | Kalamazoo       | 12,366              |



| Jurisdiction ⇅ | Sewershed ID ⇅ | Reporting Jurisdiction ⇅ | County ⇅                                    | Population Served ⇅ |
|----------------|----------------|--------------------------|---|---------------------|
| Michigan       | 891            | Michigan                 | Kalamazoo                                   | 14,378              |
| Michigan       | 891            | Michigan                 | Kalamazoo                                   | 39,068              |
| Michigan       | 896            | Michigan                 | Wayne, Macomb                               | 492,000             |
| Michigan       | 898            | Michigan                 | Oakland, Wayne                              | 840,600             |
| Michigan       | 1682           | Michigan                 | Macomb                                      | 140,000             |
| Michigan       | 1691           | Michigan                 | Jackson                                     | 90,000              |
| Michigan       | 1781           | Michigan                 | Kent  | 75,000              |
| Minnesota      | 783            | Minnesota                | Ramsey, Anoka, Dakota, Hennepin, Washington | 1,950,000           |
| Minnesota      | 849            | Minnesota                | Hennepin, Carver, Scott                     | 300,000             |
| Minnesota      | 494            | Minnesota                | Olmsted                                     | 120,000             |
| Minnesota      | 1108           | Minnesota                | Dakota, Scott                               | 250,000             |
| Minnesota      | 993            | Minnesota                | Scott, Dakota                               | 150,000             |
| Minnesota      | 1675           | Minnesota                | Blue Earth, Nicollet                        | 70,000              |
| Mississippi    | 1393           | Mississippi              | Lafayette                                   | 27,662              |
| Missouri       | 114            | Missouri                 | Henry                                       | 9,118               |
| Missouri       | 119            | Missouri                 | Boone                                       | 123,180             |
| Missouri       | 130            | Missouri                 | Stoddard                                    | 6,000               |
| Missouri       | 132            | Missouri                 | Saint Charles                               | 58,777              |
| Missouri       | 133            | Missouri                 | Saint Charles                               | 47,758              |
| Missouri       | 156            | Missouri                 | Madison                                     | 4,000               |
| Missouri       | 191            | Missouri                 | Newton                                      | 15,906              |
| Missouri       | 197            | Missouri                 | Clay, Platte                                | 13,940              |
| Missouri       | 199            | Missouri                 | Platte, Clay                                | 12,855              |
| Missouri       | 213            | Missouri                 | Barton                                      | 4,532               |
| Missouri       | 238            | Missouri                 | Saline                                      | 10,113              |
| Missouri       | 240            | Missouri                 | Webster                                     | 8,000               |
| Missouri       | 242            | Missouri                 | Nodaway                                     | 12,000              |
| Missouri       | 253            | Missouri                 | Audrain                                     | 11,500              |
| Missouri       | 259            | Missouri                 | Barry, Lawrence                             | 9,100               |
| Missouri       | 264            | Missouri                 | Saint Louis, Saint Louis City               | 306,647             |
| Missouri       | 267            | Missouri                 | Saint Louis                                 | 115,895             |
| Missouri       | 268            | Missouri                 | Saint Louis                                 | 451,367             |
| Missouri       | 269            | Missouri                 | Jefferson, Saint Louis                      | 66,738              |
| Missouri       | 270            | Missouri                 | Saint Louis, Saint Charles                  | 174,537             |
| Missouri       | 279            | Missouri                 | Newton                                      | 12,000              |
| Missouri       | 293            | Missouri                 | Jefferson, Saint Louis                      | 27,391              |
| Missouri       | 306            | Missouri                 | Franklin, Saint Louis                       | 7,001               |
| Missouri       | 348            | Missouri                 | Phelps                                      | 15,000              |
| Missouri       | 355            | Missouri                 | Andrew                                      | 4,572               |
| Missouri       | 358            | Missouri                 | Pettis                                      | 7,500               |
| Missouri       | 360            | Missouri                 | Pettis                                      | 10,730              |
| Missouri       | 385            | Missouri                 | Buchanan                                    | 27,000              |
| Missouri       | 386            | Missouri                 | Saint Charles                               | 60,000              |
| Missouri       | 423            | Missouri                 | Johnson                                     | 11,883              |
| Missouri       | 429            | Missouri                 | Franklin                                    | 15,000              |
| Missouri       | 64             | Missouri                 | Saint Francois                              | 7,165               |
| Missouri       | 69             | Missouri                 | Taney                                       | 6,155               |
| Missouri       | 71             | Missouri                 | Linn  | 3,979               |

| Jurisdiction ⇅ | Sewershed ID ⇅ | Reporting Jurisdiction ⇅ | County ⇅                    | Population Served ⇅ |
|----------------|----------------|--------------------------|-----------------------------|---------------------|
| Missouri       | 78             | Missouri                 | Caldwell, Clinton, Dekalb   | 9,700               |
| Missouri       | 81             | Missouri                 | Cape Girardeau, Scott       | 33,540              |
| Missouri       | 82             | Missouri                 | Carroll                     | 3,784               |
| Missouri       | 83             | Missouri                 | Jasper                      | 12,000              |
| Missouri       | 87             | Missouri                 | Barry                       | 3,300               |
| Missouri       | 95             | Missouri                 | Livingston                  | 9,000               |
| Missouri       | 139            | Missouri                 | Miller                      | 4,895               |
| Missouri       | 143            | Missouri                 | Saint Francois              | 10,114              |
| Missouri       | 159            | Missouri                 | Callaway                    | 12,790              |
| Missouri       | 171            | Missouri                 | Marion, Ralls               | 16,000              |
| Missouri       | 190            | Missouri                 | Cole, Callaway              | 41,153              |
| Missouri       | 192            | Missouri                 | Jasper                      | 34,403              |
| Missouri       | 194            | Missouri                 | Clay, Platte                | 76,759              |
| Missouri       | 195            | Missouri                 | Cass, Jackson, Johnson      | 490,000             |
| Missouri       | 196            | Missouri                 | Jackson                     | 25,000              |
| Missouri       | 198            | Missouri                 | Clay                        | 12,000              |
| Missouri       | 200            | Missouri                 | Johnson, Jackson, Wyandotte | 61,250              |
| Missouri       | 202            | Missouri                 | Dunklin                     | 11,300              |
| Missouri       | 218            | Missouri                 | Clay                        | 35,300              |
| Missouri       | 265            | Missouri                 | Saint Louis                 | 149,112             |
| Missouri       | 266            | Missouri                 | Jefferson, Saint Louis      | 24,174              |
| Missouri       | 280            | Missouri                 | Vernon                      | 8,082               |
| Missouri       | 284            | Missouri                 | Christian                   | 20,000              |
| Missouri       | 312            | Missouri                 | Perry                       | 9,000               |
| Missouri       | 317            | Missouri                 | Platte                      | 8,000               |
| Missouri       | 321            | Missouri                 | Butler                      | 17,000              |
| Missouri       | 359            | Missouri                 | Pettis                      | 8,250               |
| Missouri       | 365            | Missouri                 | New Madrid, Scott           | 17,000              |
| Missouri       | 380            | Missouri                 | Greene                      | 22,818              |
| Missouri       | 404            | Missouri                 | Lincoln                     | 12,019              |
| Missouri       | 407            | Missouri                 | Franklin                    | 7,936               |
| Missouri       | 424            | Missouri                 | Johnson                     | 14,477              |
| Missouri       | 438            | Missouri                 | Saint Charles               | 44,852              |
| Missouri       | 441            | Missouri                 | Howell                      | 12,000              |
| Missouri       | 63             | Missouri                 | Polk                        | 10,500              |
| Missouri       | 68             | Missouri                 | Taney                       | 10,559              |
| Missouri       | 827            | Missouri                 | Dent                        | 4,512               |
| Missouri       | 858            | Missouri                 | Jackson, Cass               | 367,300             |
| Montana        | 1176           | Montana                  | Custer                      | 8,800               |
| Montana        | 1032           | Montana                  | Gallatin                    | 3,000               |
| Montana        | 1035           | Montana                  | Gallatin                    | 1,272               |
| Montana        | 1310           | Montana                  | Gallatin                    | 50,000              |
| Montana        | 976            | Montana                  | Lewis And Clark             | 2,273               |
| Montana        | 977            | Montana                  | Lewis And Clark             | 37,125              |
| Montana        | 562            | Montana                  | Missoula                    | 68,015              |
| Nebraska       | 1493           | Nebraska                 | Holt                        | 3,700               |
| Nebraska       | 916            | Nebraska                 | Platte                      | 23,000              |
| Nebraska       | 917            | Nebraska                 | Dodge                       | 28,000              |
| Nebraska       | 919            | Nebraska                 | Adams                       | 24,692              |

| Jurisdiction ⇅ | Sewershed ID ⇅ | Reporting Jurisdiction ⇅ | County ⇅                              | Population Served ⇅ |
|----------------|----------------|--------------------------|---------------------------------------|---------------------|
| Nebraska       | 921            | Nebraska                 | Douglas                               | 200,000             |
| Nebraska       | 923            | Nebraska                 | Douglas, Sarpy                        | 600,000             |
| Nebraska       | 924            | Nebraska                 | Scotts Bluff                          | 15,932              |
| Nebraska       | 926            | Nebraska                 | Wayne                                 | 5,560               |
| Nebraska       | 987            | Nebraska                 | Stanton, Madison                      | 27,000              |
| Nebraska       | 988            | Nebraska                 | Lincoln                               | 24,000              |
| Nebraska       | 1312           | Nebraska                 | Keith                                 | 4,793               |
| Nebraska       | 1411           | Nebraska                 | Saunders                              | 4,800               |
| Nebraska       | 1331           | Nebraska                 | York                                  | 8,000               |
| Nebraska       | 1799           | Nebraska                 | Nemaha                                | 3,800               |
| Nebraska       | 915            | Nebraska                 | Dawes                                 | 5,561               |
| Nebraska       | 918            | Nebraska                 | Hall                                  | 52,000              |
| Nebraska       | 920            | Nebraska                 | Buffalo                               | 33,790              |
| Nebraska       | 922            | Nebraska                 | Lancaster                             | 100,000             |
| Nebraska       | 925            | Nebraska                 | Lancaster                             | 200,000             |
| Nevada         | 1082           | Nevada                   | Clark                                 | 984,000             |
| Nevada         | 554            | Nevada                   | Washoe                                | 200,000             |
| Nevada         | 703            | Nevada                   | Clark                                 | 650,000             |
| Nevada         | 777            | Nevada                   | Clark                                 | 246,258             |
| Nevada         | 663            | Nevada                   | Clark                                 | 265,000             |
| New Hampshire  | 285            | New Hampshire            | Carroll                               | 25,000              |
| New Hampshire  | 497            | New Hampshire            | Merrimack                             | 43,000              |
| New Hampshire  | 1706           | New Hampshire            | Merrimack                             | 4,000               |
| New Hampshire  | 497            | New Hampshire            | Merrimack                             | 45,000              |
| New Hampshire  | 402            | New Hampshire            | Sullivan                              | 6,500               |
| New Hampshire  | 1755           | New Hampshire            | Strafford                             | 30,000              |
| New Jersey     | 1291           | New Jersey               | Passaic                               | 54,000              |
| New Jersey     | 1453           | New Jersey               | Monmouth                              | 47,000              |
| New Jersey     | 1616           | New Jersey               | Monmouth                              | 40,000              |
| New Jersey     | 1763           | New Jersey               | Monmouth                              | 52,672              |
| New Jersey     | 788            | New Jersey               | Essex, Bergen, Hudson, Union, Passaic | 1,500,000           |
| New Jersey     | 1322           | New Jersey               | Essex, Union                          | 1,300,000           |
| New Jersey     | 1385           | New Jersey               | Hudson                                | 145,000             |
| New Jersey     | 1605           | New Jersey               | Bergen                                | 564,563             |
| New Jersey     | 784            | New Jersey               | Somerset, Union, Middlesex            | 880,000             |
| New Jersey     | 788            | New Jersey               | Passaic, Essex, Hudson, Bergen        | 1,500,000           |
| New Mexico     | 1386           | New Mexico               | Los Alamos                            | 13,000              |
| New Mexico     | 764            | New Mexico               | Bernalillo, Sandoval                  | 650,000             |
| New Mexico     | 854            | New Mexico               | Los Alamos                            | 5,852               |
| New Mexico     | 853            | New Mexico               | Los Alamos                            | 13,179              |
| New York       | 1000           | New York                 | Erie                                  | 17,983              |
| New York       | 1002           | New York                 | Erie                                  | 24,461              |
| New York       | 1003           | New York                 | Monroe                                | 487,322             |
| New York       | 1006           | New York                 | Chautauqua                            | 32,501              |
| New York       | 1010           | New York                 | Monroe                                | 155,096             |
| New York       | 1011           | New York                 | Cattaraugus                           | 17,760              |
| New York       | 1012           | New York                 | Erie                                  | 83,961              |
| New York       | 1021           | New York                 | Nassau                                | 20,616              |
| New York       | 1030           | New York                 | Broome                                | 38,726              |

| Jurisdiction ⇅ | Sewershed ID ⇅ | Reporting Jurisdiction ⇅ | County ⇅         | Population Served ⇅ |
|----------------|----------------|--------------------------|------------------|---------------------|
| New York       | 1041           | New York                 | Suffolk          | 278,775             |
| New York       | 1043           | New York                 | Suffolk          | 3,349               |
| New York       | 1078           | New York                 | Wayne            | 8,931               |
| New York       | 1097           | New York                 | Dutchess         | 38,207              |
| New York       | 1098           | New York                 | Sullivan         | 4,925               |
| New York       | 1149           | New York                 | Tioga            | 3,750               |
| New York       | 1151           | New York                 | Oneida           | 27,849              |
| New York       | 1153           | New York                 | Livingston       | 15,688              |
| New York       | 1170           | New York                 | Greene           | 4,896               |
| New York       | 1213           | New York                 | Ontario          | 17,936              |
| New York       | 1242           | New York                 | Schoharie        | 5,326               |
| New York       | 1306           | New York                 | Nassau           | 524,955             |
| New York       | 1336           | New York                 | Chemung          | 18,085              |
| New York       | 1400           | New York                 | Broome           | 52,501              |
| New York       | 1400           | New York                 | Broome           | 24,672              |
| New York       | 1401           | New York                 | Rockland         | 36,527              |
| New York       | 1402           | New York                 | Clinton          | 20,893              |
| New York       | 1403           | New York                 | Rockland         | 12,676              |
| New York       | 1483           | New York                 | Westchester      | 26,651              |
| New York       | 1485           | New York                 | Westchester      | 78,683              |
| New York       | 1487           | New York                 | Westchester      | 44,876              |
| New York       | 1489           | New York                 | Westchester      | 523,765             |
| New York       | 479            | New York                 | Chenango         | 6,734               |
| New York       | 512            | New York                 | Cayuga           | 31,814              |
| New York       | 514            | New York                 | Onondaga         | 16,168              |
| New York       | 516            | New York                 | Madison          | 4,908               |
| New York       | 517            | New York                 | Livingston       | 4,730               |
| New York       | 518            | New York                 | Steuben          | 5,162               |
| New York       | 520            | New York                 | Onondaga         | 39,352              |
| New York       | 521            | New York                 | Onondaga         | 242,377             |
| New York       | 525            | New York                 | Onondaga         | 50,727              |
| New York       | 527            | New York                 | Madison          | 9,207               |
| New York       | 528            | New York                 | Otsego           | 19,383              |
| New York       | 52             | New York                 | Steuben          | 5,941               |
| New York       | 530            | New York                 | Madison          | 3,317               |
| New York       | 567            | New York                 | Fulton           | 23,379              |
| New York       | 690            | New York                 | Cortland         | 26,950              |
| New York       | 691            | New York                 | Herkimer         | 13,924              |
| New York       | 692            | New York                 | Saint Lawrence   | 10,794              |
| New York       | 693            | New York                 | Ulster           | 10,577              |
| New York       | 717            | New York                 | Montgomery       | 19,679              |
| New York       | 718            | New York                 | Schuyler, Putnam | 3,656               |
| New York       | 719            | New York                 | Nassau           | 24,041              |
| New York       | 720            | New York                 | Lewis            | 3,953               |
| New York       | 738            | New York                 | Putnam           | 4,480               |
| New York       | 739            | New York                 | Orange           | 42,921              |
| New York       | 740            | New York                 | Oneida           | 33,358              |
| New York       | 742            | New York                 | Albany           | 80,922              |
| New York       | 836            | New York                 | Nassau           | 611,349             |

| Jurisdiction ⇅ | Sewershed ID ⇅ | Reporting Jurisdiction ⇅ | County ⇅    | Population Served ⇅ |
|----------------|----------------|--------------------------|-------------|---------------------|
| New York       | 837            | New York                 | Rockland    | 53,437              |
| New York       | 838            | New York                 | Rockland    | 207,430             |
| New York       | 974            | New York                 | Yates       | 5,339               |
| New York       | 999            | New York                 | Chautauqua  | 12,616              |
| New York       | 1009           | New York                 | Niagara     | 48,196              |
| New York       | 1013           | New York                 | Erie        | 71,131              |
| New York       | 1013           | New York                 | Erie        | 14,742              |
| New York       | 1022           | New York                 | Schenectady | 78,444              |
| New York       | 1042           | New York                 | Columbia    | 6,374               |
| New York       | 1044           | New York                 | Suffolk     | 24,147              |
| New York       | 1045           | New York                 | Essex       | 6,264               |
| New York       | 1068           | New York                 | Tompkins    | 56,967              |
| New York       | 1099           | New York                 | Wyoming     | 3,448               |
| New York       | 1112           | New York                 | Albany      | 109,426             |
| New York       | 1150           | New York                 | Suffolk     | 7,741               |
| New York       | 1171           | New York                 | Schoharie   | 5,326               |
| New York       | 123            | New York                 | Steuben     | 10,605              |
| New York       | 1325           | New York                 | Franklin    | 4,918               |
| New York       | 1335           | New York                 | Chemung     | 38,037              |
| New York       | 1404           | New York                 | Rockland    | 10,890              |
| New York       | 1405           | New York                 | Rockland    | 4,115               |
| New York       | 1460           | New York                 | Orange      | 28,914              |
| New York       | 1484           | New York                 | Westchester | 94,095              |
| New York       | 1486           | New York                 | Westchester | 40,301              |
| New York       | 1488           | New York                 | Westchester | 31,046              |
| New York       | 1504           | New York                 | Sullivan    | 6,639               |
| New York       | 1538           | New York                 | Sullivan    | 4,548               |
| New York       | 1557           | New York                 | Orange      | 6,563               |
| New York       | 1797           | New York                 | Dutchess    | 21,516              |
| New York       | 426            | New York                 | Orange      | 6,729               |
| New York       | 477            | New York                 | Essex       | 3,076               |
| New York       | 483            | New York                 | Delaware    | 3,581               |
| New York       | 513            | New York                 | Onondaga    | 30,613              |
| New York       | 515            | New York                 | Madison     | 4,843               |
| New York       | 519            | New York                 | Orange      | 6,369               |
| New York       | 522            | New York                 | Orange      | 27,434              |
| New York       | 524            | New York                 | Orange      | 36,227              |
| New York       | 529            | New York                 | Orange      | 8,568               |
| New York       | 531            | New York                 | Jefferson   | 4,077               |
| New York       | 532            | New York                 | Onondaga    | 25,965              |
| New York       | 580            | New York                 | Monroe      | 43,074              |
| New York       | 689            | New York                 | Tompkins    | 9,770               |
| New York       | 694            | New York                 | Franklin    | 7,175               |
| New York       | 695            | New York                 | Oswego      | 14,199              |
| New York       | 721            | New York                 | Rensselaer  | 79,699              |
| New York       | 722            | New York                 | Saratoga    | 152,482             |
| New York       | 723            | New York                 | Seneca      | 6,961               |
| New York       | 776            | New York                 | Ulster      | 26,599              |
| New York       | 869            | New York                 | Warren      | 23,462              |

| <b>Jurisdiction ↕</b> | <b>Sewershed ID ↕</b> | <b>Reporting Jurisdiction ↕</b> | <b>County ↕</b>      | <b>Population Served ↕</b> |
|-----------------------|-----------------------|---------------------------------|----------------------|----------------------------|
| New York              | 986                   | New York                        | Washington           | 12,260                     |
| New York              | 998                   | New York                        | Erie                 | 431,141                    |
| New York City         | 498                   | New York City                   | Bronx                | 684,569                    |
| New York City         | 500                   | New York City                   | New York             | 588,772                    |
| New York City         | 505                   | New York City                   | Queens               | 410,812                    |
| New York City         | 509                   | New York City                   | New York             | 588,772                    |
| New York City         | 541                   | New York City                   | Kings                | 596,326                    |
| New York City         | 549                   | New York City                   | Kings                | 1,068,012                  |
| New York City         | 551                   | New York City                   | Kings                | 758,007                    |
| New York City         | 552                   | New York City                   | Richmond             | 198,128                    |
| New York City         | 485                   | New York City                   | Kings                | 283,428                    |
| New York City         | 487                   | New York City                   | Queens               | 848,328                    |
| New York City         | 503                   | New York City                   | Queens               | 90,474                     |
| New York City         | 545                   | New York City                   | Queens               | 728,123                    |
| New York City         | 550                   | New York City                   | Richmond             | 244,918                    |
| New York City         | 553                   | New York City                   | Kings                | 192,050                    |
| North Carolina        | 1148                  | North Carolina                  | Surry                | 10,000                     |
| North Carolina        | 1220                  | North Carolina                  | Rowan                | 31,536                     |
| North Carolina        | 1223                  | North Carolina                  | Rowan                | 22,940                     |
| North Carolina        | 537                   | North Carolina                  | Stanly               | 20,000                     |
| North Carolina        | 538                   | North Carolina                  | Pasquotank           | 18,000                     |
| North Carolina        | 569                   | North Carolina                  | Greene, Lenoir       | 20,484                     |
| North Carolina        | 111                   | North Carolina                  | Wilson               | 49,384                     |
| North Carolina        | 1521                  | North Carolina                  | Mecklenburg          | 82,158                     |
| North Carolina        | 1523                  | North Carolina                  | Durham               | 142,000                    |
| North Carolina        | 167                   | North Carolina                  | Pitt                 | 89,616                     |
| North Carolina        | 237                   | North Carolina                  | Mcdowell             | 8,459                      |
| North Carolina        | 332                   | North Carolina                  | Wake                 | 550,000                    |
| North Carolina        | 335                   | North Carolina                  | Wake                 | 7,776                      |
| North Carolina        | 451                   | North Carolina                  | New Hanover          | 67,743                     |
| North Carolina        | 86                    | North Carolina                  | Wake                 | 75,886                     |
| North Carolina        | 1179                  | North Carolina                  | Watauga              | 26,000                     |
| North Carolina        | 421                   | North Carolina                  | Duplin, Pender       | 10,000                     |
| North Carolina        | 492                   | North Carolina                  | Henderson            | 16,000                     |
| North Carolina        | 536                   | North Carolina                  | Swain, Jackson       | 12,000                     |
| North Carolina        | 539                   | North Carolina                  | Vance                | 15,000                     |
| North Carolina        | 575                   | North Carolina                  | Mitchell             | 3,500                      |
| North Carolina        | 144                   | North Carolina                  | Cumberland           | 151,589                    |
| North Carolina        | 1611                  | North Carolina                  | Davidson, Guilford   | 116,390                    |
| North Carolina        | 166                   | North Carolina                  | Guilford             | 135,821                    |
| North Carolina        | 216                   | North Carolina                  | Scotland             | 15,527                     |
| North Carolina        | 271                   | North Carolina                  | Buncombe, Henderson  | 173,000                    |
| North Carolina        | 303                   | North Carolina                  | Orange, Durham       | 78,141                     |
| North Carolina        | 334                   | North Carolina                  | Wake                 | 30,655                     |
| North Carolina        | 345                   | North Carolina                  | Northampton, Halifax | 14,320                     |
| North Carolina        | 369                   | North Carolina                  | Orange, Durham       | 108,105                    |
| North Carolina        | 405                   | North Carolina                  | Jackson              | 13,296                     |
| North Carolina        | 450                   | North Carolina                  | New Hanover          | 58,361                     |
| North Carolina        | 452                   | North Carolina                  | Forsyth              | 178,000                    |

| Jurisdiction ⇅ | Sewershed ID ⇅ | Reporting Jurisdiction ⇅ | County ⇅    | Population Served ⇅ |
|----------------|----------------|--------------------------|-------------|---------------------|
| North Carolina | 53             | North Carolina           | Carteret    | 3,500               |
| North Carolina | 84             | North Carolina           | Wake        | 84,189              |
| North Carolina | 85             | North Carolina           | Wake        | 74,331              |
| North Carolina | 92             | North Carolina           | Mecklenburg | 68,685              |
| North Carolina | 93             | North Carolina           | Mecklenburg | 182,501             |
| North Carolina | 94             | North Carolina           | Mecklenburg | 120,000             |
| North Carolina | 1662           | North Carolina           | Forsyth     | 92,000              |
| North Carolina | 569            | North Carolina           | Lenoir      | 25,000              |
| North Dakota   | 1463           | North Dakota             | Grand Forks | 67,000              |
| North Dakota   | 1471           | North Dakota             | Stark       | 25,679              |
| Ohio           | 101            | Ohio                     | Preble      | 8,400               |
| Ohio           | 102            | Ohio                     | Marion      | 36,000              |
| Ohio           | 108            | Ohio                     | Erie        | 55,000              |
| Ohio           | 121            | Ohio                     | Ashtabula   | 12,000              |
| Ohio           | 124            | Ohio                     | Coshocton   | 12,000              |
| Ohio           | 129            | Ohio                     | Defiance    | 23,027              |
| Ohio           | 131            | Ohio                     | Tuscarawas  | 13,572              |
| Ohio           | 134            | Ohio                     | Montgomery  | 78,509              |
| Ohio           | 141            | Ohio                     | Belmont     | 13,169              |
| Ohio           | 147            | Ohio                     | Hancock     | 42,000              |
| Ohio           | 1608           | Ohio                     | Hocking     | 8,500               |
| Ohio           | 168            | Ohio                     | Darke       | 13,000              |
| Ohio           | 170            | Ohio                     | Butler      | 65,000              |
| Ohio           | 187            | Ohio                     | Franklin    | 645,940             |
| Ohio           | 204            | Ohio                     | Portage     | 29,000              |
| Ohio           | 219            | Ohio                     | Allen       | 61,000              |
| Ohio           | 221            | Ohio                     | Hamilton    | 200,666             |
| Ohio           | 222            | Ohio                     | Medina      | 35,000              |
| Ohio           | 225            | Ohio                     | Lorain      | 72,000              |
| Ohio           | 228            | Ohio                     | Lucas       | 195,577             |
| Ohio           | 241            | Ohio                     | Union       | 24,677              |
| Ohio           | 255            | Ohio                     | Hamilton    | 566,136             |
| Ohio           | 276            | Ohio                     | Cuyahoga    | 313,158             |
| Ohio           | 277            | Ohio                     | Cuyahoga    | 524,154             |
| Ohio           | 278            | Ohio                     | Cuyahoga    | 103,379             |
| Ohio           | 282            | Ohio                     | Licking     | 45,000              |
| Ohio           | 311            | Ohio                     | Wood        | 21,000              |
| Ohio           | 322            | Ohio                     | Ottawa      | 7,000               |
| Ohio           | 374            | Ohio                     | Franklin    | 654,817             |
| Ohio           | 382            | Ohio                     | Clark       | 88,710              |
| Ohio           | 388            | Ohio                     | Jefferson   | 17,864              |
| Ohio           | 422            | Ohio                     | Trumbull    | 68,874              |
| Ohio           | 428            | Ohio                     | Fayette     | 14,000              |
| Ohio           | 43             | Ohio                     | Fulton      | 6,000               |
| Ohio           | 455            | Ohio                     | Mahoning    | 65,469              |
| Ohio           | 456            | Ohio                     | Muskingum   | 47,500              |
| Ohio           | 46             | Ohio                     | Ashtabula   | 31,430              |
| Ohio           | 48             | Ohio                     | Athens      | 24,536              |
| Ohio           | 67             | Ohio                     | Wood        | 32,000              |

| Jurisdiction ⇅ | Sewershed ID ⇅ | Reporting Jurisdiction ⇅ | County ⇅   | Population Served ⇅ |
|----------------|----------------|--------------------------|------------|---------------------|
| Ohio           | 73             | Ohio                     | Williams   | 8,655               |
| Ohio           | 74             | Ohio                     | Crawford   | 12,362              |
| Ohio           | 975            | Ohio                     | Greene     | 4,100               |
| Ohio           | 98             | Ohio                     | Pickaway   | 13,965              |
| Ohio           | 112            | Ohio                     | Wayne      | 27,000              |
| Ohio           | 127            | Ohio                     | Montgomery | 226,729             |
| Ohio           | 140            | Ohio                     | Lorain     | 54,500              |
| Ohio           | 157            | Ohio                     | Sandusky   | 25,000              |
| Ohio           | 186            | Ohio                     | Lawrence   | 10,445              |
| Ohio           | 205            | Ohio                     | Hardin     | 8,500               |
| Ohio           | 214            | Ohio                     | Fairfield  | 24,303              |
| Ohio           | 233            | Ohio                     | Richland   | 52,000              |
| Ohio           | 235            | Ohio                     | Washington | 15,284              |
| Ohio           | 263            | Ohio                     | Knox       | 18,000              |
| Ohio           | 273            | Ohio                     | Hamilton   | 125,247             |
| Ohio           | 274            | Ohio                     | Henry      | 12,246              |
| Ohio           | 291            | Ohio                     | Huron      | 17,000              |
| Ohio           | 301            | Ohio                     | Lucas      | 44,680              |
| Ohio           | 304            | Ohio                     | Butler     | 22,000              |
| Ohio           | 309            | Ohio                     | Licking    | 3,300               |
| Ohio           | 315            | Ohio                     | Miami      | 20,581              |
| Ohio           | 326            | Ohio                     | Scioto     | 20,366              |
| Ohio           | 36             | Ohio                     | Summit     | 377,378             |
| Ohio           | 395            | Ohio                     | Hamilton   | 83,058              |
| Ohio           | 398            | Ohio                     | Lucas      | 372,208             |
| Ohio           | 403            | Ohio                     | Montgomery | 65,000              |
| Ohio           | 411            | Ohio                     | Wyandot    | 6,700               |
| Ohio           | 442            | Ohio                     | Montgomery | 113,629             |
| Ohio           | 54             | Ohio                     | Greene     | 46,160              |
| Ohio           | 79             | Ohio                     | Stark      | 85,000              |
| Ohio           | 859            | Ohio                     | Mercer     | 4,800               |
| Ohio           | 868            | Ohio                     | Wayne      | 6,500               |
| Ohio           | 1779           | Ohio                     | Mahoning   | 174,000             |
| Oklahoma       | 1264           | Oklahoma                 | Carter     | 25,000              |
| Oklahoma       | 767            | Oklahoma                 | Garfield   | 51,000              |
| Oklahoma       | 831            | Oklahoma                 | Beckham    | 11,500              |
| Oklahoma       | 769            | Oklahoma                 | Comanche   | 93,000              |
| Oregon         | 469            | Oregon                   | Jackson    | 21,105              |
| Oregon         | 929            | Oregon                   | Linn       | 57,785              |
| Oregon         | 930            | Oregon                   | Clatsop    | 11,326              |
| Oregon         | 931            | Oregon                   | Baker      | 9,860               |
| Oregon         | 933            | Oregon                   | Clackamas  | 14,206              |
| Oregon         | 937            | Oregon                   | Lincoln    | 8,865               |
| Oregon         | 938            | Oregon                   | Yamhill    | 24,120              |
| Oregon         | 939            | Oregon                   | Lincoln    | 10,400              |
| Oregon         | 941            | Oregon                   | Marion     | 26,273              |
| Oregon         | 944            | Oregon                   | Washington | 9,900               |
| Oregon         | 950            | Oregon                   | Josephine  | 37,725              |
| Oregon         | 952            | Oregon                   | Hood River | 7,800               |



| Jurisdiction ⇅ | Sewershed ID ⇅ | Reporting Jurisdiction ⇅ | County ⇅                         | Population Served ⇅ |
|----------------|----------------|--------------------------|----------------------------------|---------------------|
| Oregon         | 957            | Oregon                   | Coos                             | 9,975               |
| Oregon         | 958            | Oregon                   | Malheur                          | 10,966              |
| Oregon         | 966            | Oregon                   | Columbia                         | 13,739              |
| Oregon         | 970            | Oregon                   | Jefferson                        | 3,200               |
| Oregon         | 1164           | Oregon                   | Clackamas, Washington            | 25,780              |
| Oregon         | 1200           | Oregon                   | Multnomah, Washington            | 654,741             |
| Oregon         | 1201           | Oregon                   | Washington, Multnomah, Clackamas | 45,600              |
| Oregon         | 932            | Oregon                   | Deschutes                        | 92,850              |
| Oregon         | 934            | Oregon                   | Benton                           | 58,856              |
| Oregon         | 935            | Oregon                   | Polk                             | 16,555              |
| Oregon         | 936            | Oregon                   | Lane                             | 8,925               |
| Oregon         | 940            | Oregon                   | Deschutes                        | 32,255              |
| Oregon         | 942            | Oregon                   | Washington                       | 220,000             |
| Oregon         | 943            | Oregon                   | Washington                       | 40,000              |
| Oregon         | 945            | Oregon                   | Multnomah                        | 662,235             |
| Oregon         | 947            | Oregon                   | Lane                             | 10,200              |
| Oregon         | 949            | Oregon                   | Washington                       | 40,000              |
| Oregon         | 951            | Oregon                   | Umatilla                         | 18,775              |
| Oregon         | 953            | Oregon                   | Klamath                          | 20,840              |
| Oregon         | 955            | Oregon                   | Yamhill                          | 34,615              |
| Oregon         | 956            | Oregon                   | Jackson                          | 133,708             |
| Oregon         | 959            | Oregon                   | Umatilla                         | 17,500              |
| Oregon         | 961            | Oregon                   | Marion                           | 229,000             |
| Oregon         | 965            | Oregon                   | Marion                           | 10,520              |
| Oregon         | 967            | Oregon                   | Marion                           | 10,840              |
| Oregon         | 969            | Oregon                   | Umatilla                         | 7,605               |
| Oregon         | 971            | Oregon                   | Lane                             | 235,155             |
| Pennsylvania   | 1081           | Pennsylvania             | Montgomery                       | 13,000              |
| Pennsylvania   | 1083           | Pennsylvania             | Montgomery                       | 10,000              |
| Pennsylvania   | 125            | Pennsylvania             | Allegheny, Butler                | 41,000              |
| Pennsylvania   | 1473           | Pennsylvania             | Westmoreland                     | 32,000              |
| Pennsylvania   | 1617           | Pennsylvania             | Lackawanna                       | 88,000              |
| Pennsylvania   | 1357           | Pennsylvania             | Montgomery                       | 30,000              |
| Pennsylvania   | 1358           | Pennsylvania             | Cumberland                       | 25,000              |
| Pennsylvania   | 1359           | Pennsylvania             | Erie                             | 200,000             |
| Pennsylvania   | 1367           | Pennsylvania             | Franklin                         | 67,000              |
| Pennsylvania   | 1368           | Pennsylvania             | Armstrong, Westmoreland          | 34,200              |
| Pennsylvania   | 1369           | Pennsylvania             | Westmoreland                     | 25,000              |
| Pennsylvania   | 1370           | Pennsylvania             | Lehigh                           | 200,000             |
| Pennsylvania   | 1375           | Pennsylvania             | York                             | 85,000              |
| Pennsylvania   | 1375           | Pennsylvania             | York                             | 85,000              |
| Pennsylvania   | 1376           | Pennsylvania             | Westmoreland                     | 4,600               |
| Pennsylvania   | 1529           | Pennsylvania             | Indiana                          | 28,809              |
| Pennsylvania   | 1530           | Pennsylvania             | Centre                           | 9,600               |
| Pennsylvania   | 1775           | Pennsylvania             | Lackawanna                       | 15,700              |
| Pennsylvania   | 1776           | Pennsylvania             | Mercer                           | 19,000              |
| Pennsylvania   | 1787           | Pennsylvania             | Chester                          | 10,500              |
| Pennsylvania   | 1161           | Pennsylvania             | Lehigh                           | 6,598               |
| Pennsylvania   | 1388           | Pennsylvania             | Allegheny                        | 22,000              |

| Jurisdiction ⇅ | Sewershed ID ⇅ | Reporting Jurisdiction ⇅ | County ⇅                         | Population Served ⇅ |
|----------------|----------------|--------------------------|----------------------------------|---------------------|
| Pennsylvania   | 1454           | Pennsylvania             | Bucks                            | 55,000              |
| Pennsylvania   | 1366           | Pennsylvania             | Dauphin                          | 124,000             |
| Pennsylvania   | 1368           | Pennsylvania             | Westmoreland, Armstrong          | 34,200              |
| Pennsylvania   | 1390           | Pennsylvania             | Lancaster, Monroe                | 25,000              |
| Pennsylvania   | 1455           | Pennsylvania             | Delaware                         | 6,800               |
| Pennsylvania   | 1553           | Pennsylvania             | Mckean                           | 14,194              |
| Pennsylvania   | 1554           | Pennsylvania             | Mercer                           | 16,000              |
| Pennsylvania   | 1775           | Pennsylvania             | Lackawanna                       | 15,700              |
| Pennsylvania   | 1777           | Pennsylvania             | Monroe                           | 4,000               |
| Pennsylvania   | 1667           | Pennsylvania             | Dauphin                          | 125,000             |
| Pennsylvania   | 1737           | Pennsylvania             | Delaware                         | 220,000             |
| Rhode Island   | 1134           | Rhode Island             | Kent                             | 60,224              |
| Rhode Island   | 1224           | Rhode Island             | Kent                             | 33,000              |
| Rhode Island   | 548            | Rhode Island             | Providence                       | 120,000             |
| Rhode Island   | 565            | Rhode Island             | Kent                             | 6,000               |
| Rhode Island   | 677            | Rhode Island             | Bristol                          | 21,100              |
| Rhode Island   | 464            | Rhode Island             | Providence                       | 240,000             |
| Rhode Island   | 76             | Rhode Island             | Providence                       | 10,000              |
| Rhode Island   | 835            | Rhode Island             | Bristol                          | 11,000              |
| South Carolina | 1265           | South Carolina           | Georgetown                       | 12,000              |
| South Carolina | 1541           | South Carolina           | Horry                            | 30,000              |
| South Carolina | 599            | South Carolina           | Greenwood                        | 12,000              |
| South Carolina | 906            | South Carolina           | Lexington                        | 40,000              |
| South Carolina | 1159           | South Carolina           | Florence, Darlington             | 45,000              |
| South Carolina | 1549           | South Carolina           | Greenville                       | 140,280             |
| South Carolina | 600            | South Carolina           | Greenwood                        | 48,000              |
| South Carolina | 877            | South Carolina           | Kershaw                          | 8,825               |
| South Carolina | 878            | South Carolina           | Charleston                       | 64,170              |
| South Carolina | 883            | South Carolina           | York                             | 88,000              |
| South Carolina | 884            | South Carolina           | Greenville                       | 400,000             |
| South Carolina | 885            | South Carolina           | Georgetown                       | 30,000              |
| South Carolina | 908            | South Carolina           | Richland                         | 60,000              |
| South Carolina | 909            | South Carolina           | Horry                            | 195,000             |
| South Carolina | 1700           | South Carolina           | Greenville                       | 142,376             |
| South Dakota   | 1266           | South Dakota             | Lincoln, Minnehaha               | 215,000             |
| South Dakota   | 672            | South Dakota             | Pennington                       | 80,000              |
| South Dakota   | 1165           | South Dakota             | Yankton                          | 15,500              |
| South Dakota   | 493            | South Dakota             | Beadle                           | 13,289              |
| Tennessee      | 1282           | Tennessee                | Davidson, Rutherford, Williamson | 600,000             |
| Tennessee      | 1323           | Tennessee                | Shelby                           | 300,000             |
| Tennessee      | 1445           | Tennessee                | Sumner                           | 45,000              |
| Tennessee      | 1607           | Tennessee                | Chester                          | 3,710               |
| Tennessee      | 1283           | Tennessee                | Davidson                         | 600,000             |
| Tennessee      | 1329           | Tennessee                | Shelby                           | 300,000             |
| Tennessee      | 1508           | Tennessee                | Hawkins, Sullivan                | 60,500              |
| Tennessee      | 1539           | Tennessee                | Sullivan                         | 50,000              |
| Tennessee      | 496            | Tennessee                | Bradley                          | 52,000              |
| Texas          | 1131           | Texas                    | Kaufman                          | 138,700             |
| Texas          | 1141           | Texas                    | Travis                           | 510,000             |

| Jurisdiction ⇅ | Sewershed ID ⇅ | Reporting Jurisdiction ⇅ | County ⇅           | Population Served ⇅ |
|----------------|----------------|--------------------------|--------------------|---------------------|
| Texas          | 1231           | Texas                    | Dallas             | 500,000             |
| Texas          | 1752           | Texas                    | Tarrant            | 1,200,000           |
| Texas          | 566            | Texas                    | El Paso            | 143,000             |
| Texas          | 566            | Texas                    | El Paso            | 143,000             |
| Texas          | 667            | Texas                    | Galveston          | 26,400              |
| Texas          | 673            | Texas                    | El Paso            | 436,000             |
| Texas          | 681            | Texas                    | El Paso            | 142,000             |
| Texas          | 709            | Texas                    | El Paso            | 170,000             |
| Texas          | 865            | Texas                    | Webb               | 120,000             |
| Texas          | 867            | Texas                    | Webb               | 140,000             |
| Texas          | 113            | Houston                  | Harris             | 3,825               |
| Texas          | 165            | Houston                  | Harris, Fort Bend  | 28,742              |
| Texas          | 176            | Houston                  | Harris             | 9,375               |
| Texas          | 272            | Houston                  | Harris             | 4,010               |
| Texas          | 287            | Houston                  | Harris             | 12,892              |
| Texas          | 288            | Houston                  | Harris             | 33,102              |
| Texas          | 350            | Houston                  | Harris             | 20,608              |
| Texas          | 373            | Houston                  | Harris             | 32,485              |
| Texas          | 375            | Houston                  | Harris             | 293,227             |
| Texas          | 409            | Houston                  | Harris             | 97,918              |
| Texas          | 434            | Houston                  | Harris, Fort Bend  | 20,920              |
| Texas          | 446            | Houston                  | Harris             | 20,758              |
| Texas          | 1673           | Texas                    | Dallas             | 200,000             |
| Texas          | 1683           | Texas                    | Dallas             | 186,000             |
| Texas          | 1761           | Texas                    | Potter, Randall    | 60,000              |
| Texas          | 1762           | Texas                    | Potter, Randall    | 140,000             |
| Texas          | 1765           | Texas                    | Wichita            | 90,000              |
| Texas          | 865            | Texas                    | Webb               | 120,000             |
| Texas          | 867            | Texas                    | Webb               | 140,000             |
| Texas          | 1140           | Texas                    | Travis             | 500,000             |
| Texas          | 1210           | Texas                    | Dallas             | 900,000             |
| Texas          | 1494           | Texas                    | Galveston          | 20,000              |
| Texas          | 593            | Texas                    | Galveston          | 89,600              |
| Texas          | 805            | Texas                    | Dallas             | 900,000             |
| Texas          | 811            | Texas                    | Bexar              | 415,000             |
| Texas          | 847            | Texas                    | Bexar              | 230,000             |
| Texas          | 848            | Texas                    | Bexar              | 630,000             |
| Texas          | 863            | Texas                    | Webb               | 30,000              |
| Texas          | 135            | Houston                  | Harris             | 16,030              |
| Texas          | 149            | Houston                  | Harris             | 4,170               |
| Texas          | 160            | Houston                  | Harris             | 40,689              |
| Texas          | 183            | Houston                  | Harris             | 16,804              |
| Texas          | 201            | Houston                  | Harris             | 124,000             |
| Texas          | 207            | Houston                  | Harris, Montgomery | 52,055              |
| Texas          | 250            | Houston                  | Harris             | 20,161              |
| Texas          | 289            | Houston                  | Harris             | 19,867              |
| Texas          | 290            | Houston                  | Harris             | 95,600              |
| Texas          | 307            | Houston                  | Harris             | 5,497               |
| Texas          | 35             | Houston                  | Harris             | 551,150             |

| Jurisdiction ⇅ | Sewershed ID ⇅ | Reporting Jurisdiction ⇅ | County ⇅        | Population Served ⇅ |
|----------------|----------------|--------------------------|-----------------|---------------------|
| Texas          | 366            | Houston                  | Harris          | 109,414             |
| Texas          | 367            | Houston                  | Harris          | 109,414             |
| Texas          | 406            | Houston                  | Harris          | 59,188              |
| Texas          | 40             | Houston                  | Harris          | 117,968             |
| Texas          | 435            | Houston                  | Harris          | 33,645              |
| Texas          | 439            | Houston                  | Harris          | 85,129              |
| Texas          | 443            | Houston                  | Harris          | 3,623               |
| Texas          | 449            | Houston                  | Harris          | 8,610               |
| Texas          | 56             | Houston                  | Harris          | 70,900              |
| Texas          | 97             | Houston                  | Harris          | 37,359              |
| Utah           | 1077           | Utah                     | Wasatch         | 19,936              |
| Utah           | 17             | Utah                     | Utah            | 112,901             |
| Utah           | 1              | Utah                     | Washington      | 24,970              |
| Utah           | 23             | Utah                     | Summit          | 7,460               |
| Utah           | 25             | Utah                     | Davis           | 21,872              |
| Utah           | 27             | Utah                     | Washington      | 92,047              |
| Utah           | 29             | Utah                     | Utah            | 12,510              |
| Utah           | 30             | Utah                     | Salt Lake       | 254,971             |
| Utah           | 31             | Utah                     | Utah            | 35,840              |
| Utah           | 32             | Utah                     | Tooele          | 36,244              |
| Utah           | 34             | Utah                     | Box Elder       | 12,451              |
| Utah           | 3              | Utah                     | Box Elder       | 21,443              |
| Utah           | 6              | Utah                     | Davis           | 64,533              |
| Utah           | 7              | Utah                     | Salt Lake       | 515,494             |
| Utah           | 1736           | Utah                     | Salt Lake       | 600,000             |
| Utah           | 1270           | Utah                     | Tooele          | 13,000              |
| Utah           | 10             | Utah                     | Cache           | 9,095               |
| Utah           | 11             | Utah                     | Salt Lake       | 89,507              |
| Utah           | 11             | Utah                     | Salt Lake, Utah | 94,484              |
| Utah           | 12             | Utah                     | Cache           | 94,005              |
| Utah           | 15             | Utah                     | Grand, San Juan | 9,896               |
| Utah           | 16             | Utah                     | Weber, Davis    | 228,700             |
| Utah           | 18             | Utah                     | Utah            | 102,624             |
| Utah           | 19             | Utah                     | Carbon          | 17,312              |
| Utah           | 20             | Utah                     | Utah            | 21,231              |
| Utah           | 21             | Utah                     | Duchesne        | 6,790               |
| Utah           | 22             | Utah                     | Summit          | 24,374              |
| Utah           | 24             | Utah                     | Davis           | 84,981              |
| Utah           | 26             | Utah                     | Utah            | 53,313              |
| Utah           | 28             | Utah                     | Salt Lake       | 209,645             |
| Utah           | 2              | Utah                     | Uintah          | 29,513              |
| Utah           | 33             | Utah                     | Utah            | 253,112             |
| Utah           | 5              | Utah                     | Iron            | 32,451              |
| Utah           | 9              | Utah                     | Davis, Weber    | 208,850             |
| Utah           | 1708           | Utah                     | Utah            | 115,000             |
| Vermont        | 1157           | Vermont                  | Bennington      | 15,000              |
| Vermont        | 1751           | Vermont                  | Chittenden      | 22,000              |
| Vermont        | 1753           | Vermont                  | Windsor         | 4,500               |
| Vermont        | 1080           | Vermont                  | Chittenden      | 31,000              |

| Jurisdiction ⇅ | Sewershed ID ⇅ | Reporting Jurisdiction ⇅ | County ⇅   | Population Served ⇅ |
|----------------|----------------|--------------------------|--|---------------------|
| Vermont        | 1452           | Vermont                  | Caledonia  | 3,500               |
| Vermont        | 1520           | Vermont                  | Washington   | 15,000              |
| Vermont        | 701            | Vermont                  | Chittenden   | 8,500               |
| Vermont        | 770            | Vermont                  | Franklin   | 7,500               |
| Virginia       | 1160           | Virginia                 | Hanover  | 20,000              |
| Virginia       | 1195           | Virginia                 | Norfolk City   | 78,322              |
| Virginia       | 1197           | Virginia                 | York   | 118,497             |
| Virginia       | 1198           | Virginia                 | Wise   | 9,340               |
| Virginia       | 1211           | Virginia                 | York, Gloucester, Mathews  | 99,112              |
| Virginia       | 1218           | Virginia                 | Petersburg City  | 30,000              |
| Virginia       | 1272           | Virginia                 | Franklin   | 5,000               |
| Virginia       | 892            | Virginia                 | Colonial Heights City, Petersburg City, Prince George, Chesterfield, Dinwiddie | 65,000              |
| Virginia       | 100            | Virginia                 | Pittsylvania   | 47,000              |
| Virginia       | 1528           | Virginia                 | Stafford, Prince William, Fairfax  | 165,901             |
| Virginia       | 1528           | Virginia                 | Fairfax, Prince William, Stafford  | 165,901             |
| Virginia       | 169            | Virginia                 | Fairfax, Prince William, Stafford  | 165,901             |
| Virginia       | 180            | Virginia                 | Chesapeake City, Virginia Beach City, Norfolk City, Portsmouth City            | 192,347             |
| Virginia       | 220            | Virginia                 | Stafford   | 44,000              |
| Virginia       | 229            | Virginia                 | Amherst, Bedford, Campbell   | 220,000             |
| Virginia       | 286            | Virginia                 | Harrisonburg City, Rockingham  | 81,000              |
| Virginia       | 342            | Virginia                 | Goochland, Henrico, Richmond City  | 225,000             |
| Virginia       | 346            | Virginia                 | Botetourt, Roanoke, Roanoke City, Salem  | 300,000             |
| Virginia       | 42             | Virginia                 | Prince William, Stafford   | 92,000              |
| Virginia       | 42             | Virginia                 | Prince William, Stafford   | 92,000              |
| Virginia       | 454            | Virginia                 | Washington   | 7,300               |
| Virginia       | 1786           | Virginia                 | Carroll  | 3,000               |
| Virginia       | 1113           | Virginia                 | Arlington  | 207,627             |
| Virginia       | 1202           | Virginia                 | Frederick  | 51,470              |
| Virginia       | 1259           | Virginia                 | Clifton Forge City   | 5,000               |
| Virginia       | 1275           | Virginia                 | Hampton City, Newport News City  | 141,543             |
| Virginia       | 1338           | Virginia                 | Mecklenburg  | 5,300               |
| Virginia       | 540            | Virginia                 | Henry  | 16,000              |
| Virginia       | 118            | Virginia                 | Wise   | 14,000              |
| Virginia       | 1576           | Virginia                 | Newport News City, Hampton City  | 118,497             |
| Virginia       | 1576           | Virginia                 | Hampton City, Newport News City  | 118,497             |
| Virginia       | 177            | Virginia                 | Chesapeake City, Norfolk City, Virginia Beach City                             | 530,848             |
| Virginia       | 178            | Virginia                 | Isle Of Wight, Suffolk City, Chesapeake City, Portsmouth City                  | 197,608             |
| Virginia       | 181            | Virginia                 | Williamsburg City, Newport News City, York, New Kent, James City               | 69,059              |
| Virginia       | 220            | Virginia                 | Stafford   | 44,000              |
| Virginia       | 229            | Virginia                 | Campbell, Amherst, Bedford   | 220,000             |
| Virginia       | 262            | Virginia                 | Albemarle  | 118,266             |
| Virginia       | 308            | Virginia                 | Frederick  | 16,563              |
| Virginia       | 310            | Virginia                 | Radford, Pulaski, Montgomery   | 70,000              |
| Virginia       | 38             | Virginia                 | Alexandria City, Fairfax   | 300,000             |
| Virginia       | 400            | Virginia                 | Montgomery   | 23,000              |

| Jurisdiction ⇅ | Sewershed ID ⇅ | Reporting Jurisdiction ⇅ | County ⇅  | Population Served ⇅ |
|----------------|----------------|--------------------------|---|---------------------|
| Virginia       | 410            | Virginia                 | Prince William, Fauquier, Manassas Park City, Fairfax, Fairfax City, Loudoun, Manassas City | 350,000             |
| Virginia       | 51             | Virginia                 | Loudoun   | 10,178              |
| Virginia       | 61             | Virginia                 | Montgomery  | 52,500              |
| Washington     | 1139           | Washington               | King, Pierce  | 896,000             |
| Washington     | 1142           | Washington               | King, Snohomish   | 789,000             |
| Washington     | 499            | Washington               | Clark   | 162,100             |
| Washington     | 555            | Washington               | Snohomish   | 20,000              |
| Washington     | 661            | Washington               | Snohomish   | 37,650              |
| Washington     | 676            | Washington               | Snohomish, King   | 288,000             |
| Washington     | 679            | Washington               | Snohomish   | 7,125               |
| Washington     | 768            | Washington               | Snohomish   | 173,800             |
| Washington     | 804            | Washington               | Clark   | 16,950              |
| Washington     | 1398           | Washington               | Grant   | 8,475               |
| Washington     | 1399           | Washington               | Jefferson   | 10,000              |
| Washington     | 1512           | Washington               | Whitman   | 35,812              |
| Washington     | 1757           | Washington               | Thurston  | 119,790             |
| Washington     | 753            | Washington               | Franklin  | 73,000              |
| Washington     | 759            | Washington               | Spokane   | 225,000             |
| Washington     | 1084           | Washington               | Clark   | 120,000             |
| Washington     | 510            | Washington               | Clark   | 81,140              |
| Washington     | 1076           | Washington               | Chelan  | 35,550              |
| Washington     | 1143           | Washington               | Pierce  | 43,000              |
| Washington     | 1397           | Washington               | Pierce  | 295,855             |
| Washington     | 1635           | Washington               | Yakima  | 117,072             |
| Washington     | 754            | Washington               | Benton  | 59,609              |
| Washington     | 755            | Washington               | Benton  | 15,000              |
| Washington     | 758            | Washington               | Benton  | 83,000              |
| Washington     | 760            | Washington               | Spokane   | 120,000             |
| Wisconsin      | 1277           | Wisconsin                | Dane  | 360,000             |
| Wisconsin      | 1349           | Wisconsin                | Rock  | 36,000              |
| Wisconsin      | 115            | Wisconsin                | Waupaca   | 14,000              |
| Wisconsin      | 136            | Wisconsin                | Chippewa, Eau Claire  | 73,000              |
| Wisconsin      | 182            | Wisconsin                | Saint Croix   | 14,000              |
| Wisconsin      | 231            | Wisconsin                | Dane  | 345,000             |
| Wisconsin      | 232            | Wisconsin                | Manitowoc   | 34,500              |
| Wisconsin      | 236            | Wisconsin                | Marinette   | 11,000              |
| Wisconsin      | 239            | Wisconsin                | Marathon, Wood  | 19,300              |
| Wisconsin      | 313            | Wisconsin                | Marinette   | 3,500               |
| Wisconsin      | 318            | Wisconsin                | Grant   | 11,000              |
| Wisconsin      | 331            | Wisconsin                | Racine  | 139,000             |
| Wisconsin      | 344            | Wisconsin                | Saint Croix, Pierce   | 15,900              |
| Wisconsin      | 364            | Wisconsin                | Sheboygan   | 75,000              |
| Wisconsin      | 391            | Wisconsin                | Dane  | 33,000              |
| Wisconsin      | 420            | Wisconsin                | Vernon  | 4,400               |
| Wisconsin      | 44             | Wisconsin                | Ashland   | 8,200               |
| Wisconsin      | 60             | Wisconsin                | Jackson   | 5,000               |
| Wisconsin      | 696            | Wisconsin                | Jefferson, Dodge  | 23,660              |

| Jurisdiction ↕ | Sewershed ID ↕ | Reporting Jurisdiction ↕ | County ↕   | Population Served ↕ |
|----------------|----------------|--------------------------|--|---------------------|
| Wisconsin      | 120            | Wisconsin                | Columbia   | 6,900               |
| Wisconsin      | 128            | Wisconsin                | Brown  | 43,000              |
| Wisconsin      | 153            | Wisconsin                | Waukesha   | 51,000              |
| Wisconsin      | 164            | Wisconsin                | Brown, Kewaunee                                  | 189,000             |
| Wisconsin      | 172            | Wisconsin                | Washington, Dodge                                | 17,320              |
| Wisconsin      | 203            | Wisconsin                | Kenosha  | 122,000             |
| Wisconsin      | 209            | Wisconsin                | La Crosse  | 85,000              |
| Wisconsin      | 223            | Wisconsin                | Columbia   | 3,100               |
| Wisconsin      | 243            | Wisconsin                | Juneau   | 4,400               |
| Wisconsin      | 246            | Wisconsin                | Dunn   | 5,000               |
| Wisconsin      | 248            | Wisconsin                | Lincoln  | 9,700               |
| Wisconsin      | 256            | Wisconsin                | Ozaukee, Milwaukee                               | 470,007             |
| Wisconsin      | 257            | Wisconsin                | Waukesha, Milwaukee, Racine, Washington, Ozaukee | 615,934             |
| Wisconsin      | 260            | Wisconsin                | Green  | 11,000              |
| Wisconsin      | 297            | Wisconsin                | Jefferson, Waukesha                              | 22,300              |
| Wisconsin      | 302            | Wisconsin                | Winnebago  | 78,300              |
| Wisconsin      | 320            | Wisconsin                | Sheboygan  | 9,150               |
| Wisconsin      | 325            | Wisconsin                | Columbia   | 11,000              |
| Wisconsin      | 389            | Wisconsin                | Portage  | 27,000              |
| Wisconsin      | 392            | Wisconsin                | Douglas  | 28,000              |
| Wisconsin      | 41             | Wisconsin                | Outagamie, Winnebago, Calumet                    | 72,810              |
| Wisconsin      | 432            | Wisconsin                | Waupaca  | 8,000               |
| Wisconsin      | 433            | Wisconsin                | Marathon   | 42,350              |
| Wyoming        | 1353           | Wyoming                  | Sheridan   | 20,000              |
| Wyoming        | 188            | Wyoming                  | Teton  | 13,036              |
| Wyoming        | 1317           | Wyoming                  | Sweetwater                                       | 12,000              |

## Terms to Know

**Virus levels:** SARS-CoV-2 viral RNA concentrations in wastewater. RNA is the virus's genetic material.

**Normalization:** A statistical method to account for differences in variables such as wastewater flow rate and number of sites in a sewer system. In other words, normalization reduces excess variation (or "noise") and helps account for things like changes in flow rates or weather events that can impact wastewater. Normalized data can be compared over time and between different sites. The data presented on this page are based on SARS-CoV-2 viral RNA concentrations in wastewater that have been normalized. See the [Analytics page](#) for more information.

**Sewershed:** The geographic area contributing wastewater to a sampling location. Sewersheds may cross county or state boundaries. Sewersheds are referred to as "sites" on the map.

## About the Data

†Data will update Monday through Friday as soon as they are reviewed and verified, oftentimes before 8 pm ET. Updates on weekends and following day when reporting coincides with a federal holiday. Note: Daily updates (Mon-Fri) might be delayed due to COVID-19.

### Percent of sites in each percent change category over time

- At any point in time, this chart shows what percent of sites reported decreased levels of virus in the previous 15 days, what percent reported increased levels, and what percent stayed the same.
- Viewed over time, the chart shows how this distribution changed.
- For each date, the number of sites in each percent change category is counted and divided by the total number of sites with current data. This information is provided on a stacked area chart to show the change in the percent of sites in each percent change category since January 1, 2021.
- To simplify the chart, the "-9% to 0%" and "1% to 9%" categories were combined into "-9% to 9%," and the "100% to 100% or more" categories were combined into "100% or more." Because the number of sampling sites has changed since January 1, 2021, the total number of sites with current data is shown as a black line on the chart.
- Not all sites have data since January 1, 2021, and not all sites have data for all dates shown on the chart.

- The percent of sites in each percent change category for each date may not add up to 100% due to rounding.

#### Current virus levels in wastewater by site

- This metric shows whether SARS-CoV-2 levels at a site are currently higher or lower than past levels at the same site by first ordering the SARS-CoV-2 levels in wastewater for all samples collected since December 1, 2021 from the lowest to the highest. The ordered levels are then grouped into five categories (0-19%, 20-39%, 40-59%, 60-79%, and 80-100%) based on how high their levels are compared to previous levels. The levels in the 0-19% group represent the lowest levels seen and those in the 80-100% group represent the highest.
- Using December 1, 2021 as a starting date for all sites makes data more comparable between sites. Sites that began reporting wastewater data after December 1, 2021 are not comparable to sites that have been reporting data since December 1, 2021 because the data history for these new sites is not long enough to reflect the same surges as the other sites.
- The "New site" category means a site just started collecting wastewater samples and has reported fewer than 10 not enough samples to meaningfully compare levels at the site over time.

#### Percent change in the last 15 days

- This metric shows how much normalized SARS-CoV-2 viral levels in wastewater at each site increased or decreased over the current 15-day time period. This metric does not show overall levels of SARS-CoV-2 in wastewater. Percent change is calculated as the modeled change over 15 days, based on linear regression of log-transformed viral levels. A large percent increase does not necessarily mean SARS-CoV-2 viral levels in wastewater are high. For instance, a change from 1 unit to 2 units would be a percent change of 100%. A change from 1 million units to 2 million units is also a percent change of 100%.
- Percent change is calculated as the modeled change over 15 days, based on linear regression of log-transformed viral levels. A site must report at least 2 samples over the 15-day period to calculate percent change. Sites with "No recent data" (reported fewer than 2 samples for the current 15-day period) are listed as "No recent data" on the map.

#### Percent of wastewater samples with detectable virus in the last 15 days

- This metric shows the percent of wastewater samples at each site that were positive for SARS-CoV-2 RNA over the last 15 days. It does not show overall levels of SARS-CoV-2 in wastewater.
- This metric is calculated by dividing the number of samples in which SARS-CoV-2 was detected at a site by the total number of samples collected for the site during the 15-day period and multiplying by 100.
- Sites with at least one sample and no SARS-CoV-2 viral detections over the past 15 days are listed as "Non-detectable" on the map as hollow circles with a black outline.
- Sites with no samples for the current 15-day period are listed as "No recent data" and colored gray on the map.

#### SARS-CoV-2 concentrations in wastewater over time

- When a site is selected, a smoothed, spline fit SARS-CoV-2 concentration line is shown for the last 4 months, as displayed on the map. The smoothed SARS-CoV-2 concentration line shows how SARS-CoV-2 concentrations in wastewater at a sampling location have changed over the last 4 months.
- At least 4 samples are required to produce the smoothed SARS-CoV-2 concentration line. If a major change in laboratory method was reported, only data since the new laboratory method was reported are shown. Sites labeled as 'New sites' in the 'Filter' menu in the wastewater metric should be viewed with caution since they have only a few samples to generate their trends.

#### Category change in the last 7 days

- This metric shows the change in the number of sites (represented as a percent) that are in a specific metric category over the 15-day percent change category of 1000% or more) compared to the previous 7 days. In other words, it shows how many sites have been added or removed from the metric category in the past week. It is calculated by subtracting the current number of sites in each metric category from the number of sites in the same category 7 days earlier and dividing by the number of sites in the category 7 days earlier.
- \*If a metric category had no sites in it 7 days earlier, the category change in the last 7 days is listed as "N/A\*" since division by 0 is not possible.

#### County-level data

- Data are presented by sewer shed (the geographic area contributing wastewater to a sampling location). Sampling locations are at wastewater treatment plants or upstream in the sewage network. Sewer sheds may cross county or state boundaries. Multiple sewer sheds may serve a single county, and a single sewer shed may serve multiple counties. Sewer shed boundaries are shown as "sites" on the map.

#### Sewer shed locations

- Data are plotted in the ZIP code of the sampling location, so points on the map do not correspond exactly to sewer shed boundaries.
- All counties represented by a sampling location are highlighted when the sampling location point is selected.
- The District of Columbia (DC) and New York City (NYC) are shown separately on the map to denote sampling locations within those jurisdictions. In the "State or Territory" dropdown menu, select "District of Columbia" or "New York City" to zoom to that jurisdiction. Please note some DC sampling locations may receive wastewater from parts of counties in Virginia, and some NYC sampling locations may receive wastewater from parts of counties in surrounding states.

#### Data subject to change

- Wastewater disease surveillance data presented are the best available data and are subject to change. These data may be incomplete for the most recent 15-day period due to processing and reporting delays. All data are provisional.



### May 2022 Coverage Limitations

- Beginning April 15, 2022, approximately 150 wastewater sites in 29 states began transitioning to a new wastewater. During this transition, these sites will not have recent data displayed and will be colored gray on the map. It will take time for enough data to be collected to calculate the metrics displayed on this page. Results for these sites are expected to return again between mid-May and June 2022.

### Data not shown

- Data from sewersheds that serve fewer than 3,000 people.
- Data from sewersheds where population estimates are missing.
- Data from facility or institution-specific sampling locations.
- Wastewater treatment plant names and the names of upstream sampling sites are made anonymous using a common number.
- Approximately 20% of US households are on septic systems; the exact percent varies by location. These systems are not connected to wastewater treatment plants where sampling often occurs. Therefore, households on septic systems are not represented in the data.
- Data from sewersheds currently being monitored but not submitted by health departments to CDC. Certain commercial wastewater samples do not submit their data to CDC.
- Data from sewersheds may not be presented if there are data quality issues.

### Data source

- Data displayed are derived from two sources:
- Data are submitted to CDC by state, tribal, local, and territorial (STLT) health departments participating in the National Wastewater Surveillance System. Participation is voluntary, so not all jurisdictions are reporting to CDC.
- Data are reported through a CDC-managed contract for commercial testing, which is intended to supplement the coverage of the STLT wastewater surveillance programs.

### Laboratory methods

- SARS-CoV-2 concentrations in wastewater are measured using reverse transcription quantitative polymerase chain reaction (RT-qPCR) or reverse transcription digital polymerase chain reaction (RT-dPCR). Laboratory processing and quantification vary between sampling sites or, less commonly, within a sampling site over time. Since SARS-CoV-2 concentrations differ across these lab methods, concentration values should not be compared across sampling locations. Instead, SARS-CoV-2 concentrations and current levels compared to past levels at the same site are provided. These metrics are comparable across lab methods. When testing a sample, SARS-CoV-2 is considered detected when any PCR replicates were positive. Positive is defined for RT-qPCR as a Ct value less than 40 and for RT-ddPCR as 3 or more positive replicates. Learn more on the Wastewater Surveillance Testing Methods page.

### Data download

- These data can be downloaded from data.cdc.gov: [NWSS Public SARS-CoV-2 Wastewater Metric Data](#) and [NWSS Public SARS-CoV-2 Concentration in Wastewater Data](#)
- The data dictionary for these data (Public Analytics Data Dictionary) is also available.
- To request detailed wastewater data, including a full-time history of raw concentrations, email [nwss@cdc.gov](mailto:nwss@cdc.gov) with the subject 'NWSS public data request.' You will be required to sign a data use agreement.

## Wondering what all the data mean?

CDC's [COVID-Data Tracker Weekly Review](#) helps you stay up to date on interpretation of key data and trends.

## How does wastewater surveillance work?

Wastewater data can show changes in disease trends 4 to 6 days before those changes in trends are seen in clinic single wastewater sample captures the infection status of thousands to millions of individuals. Learn more: [National Surveillance System \(NWSS\)](#).

## If it looks like virus levels in wastewater are rising in my community, what should I do?

Check your county's [COVID-19 Community Level](#) and follow the recommended prevention steps. Public health officials watch for sustained increasing levels of the virus in wastewater and use these data to inform decisions. State and local health officials track a variety of data and put this information together to understand the COVID-19 situation and decide how to best respond.

## How do I build NWSS in my community?

Wastewater-based disease surveillance is an exciting new tool to help communities monitor their health. Find [info what to consider](#) when implementing a wastewater-based disease surveillance system.

## Is there wastewater sampling in my community?

New sampling sites are being added over time as health departments begin sampling and reporting wastewater surveillance. Some communities not represented on this dashboard may be conducting wastewater surveillance. If you would like to know if wastewater surveillance is happening in your community, contact your [health department](#) or local government. Atlanta does not release the names of the wastewater treatment plants or zip codes where sampling sites are located. However, information on the counties served by the wastewater sampling sites is provided.





### Cite COVID Data Tracker

Centers for Disease Control and Prevention. COVID Data Tracker. Atlanta, GA: US Department of Health and Human Services, CDC; 2023, January 06. <https://covid.cdc.gov/covid-data-tracker>

### [COVID-19 Home >](#)

All COVID-19 topics including prevention, travel, work, and school

#### HAVE QUESTIONS?

-  Visit CDC-INFO
-  Call 800-232-4636
-  Email CDC-INFO
-  Open 24/7

#### CDC INFORMATION

- About CDC
- Jobs
- Funding
- Policies
- File Viewers & Players

[Privacy](#)  
[FOIA](#)  
[No Fear Act](#)  
[OIG](#)  
[Nondiscrimination](#)  
[Accessibility](#)

**CONNECT WITH CDC**



[U.S. Department of Health & Human Services](#)

[USA.gov](#)

[CDC Website Exit Disclaimer](#) 