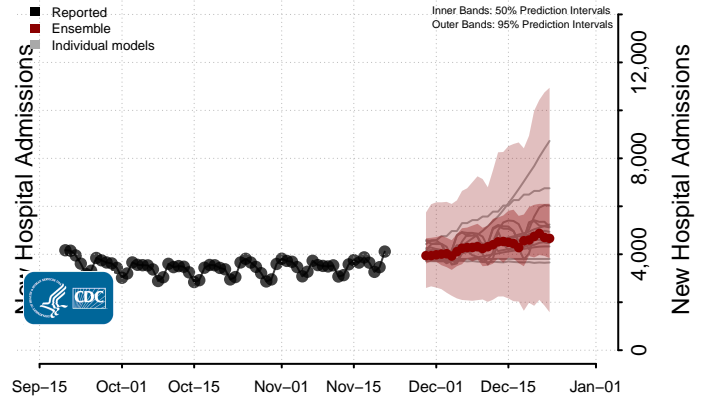
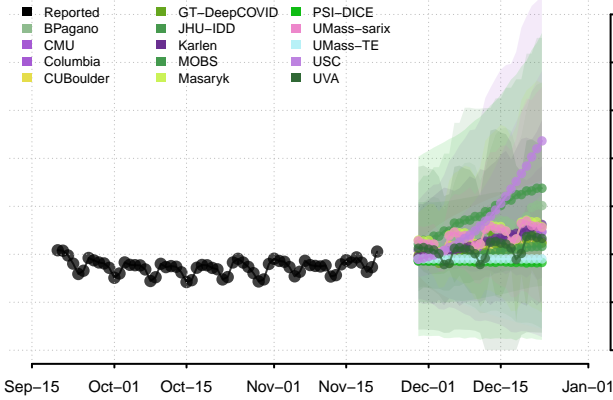
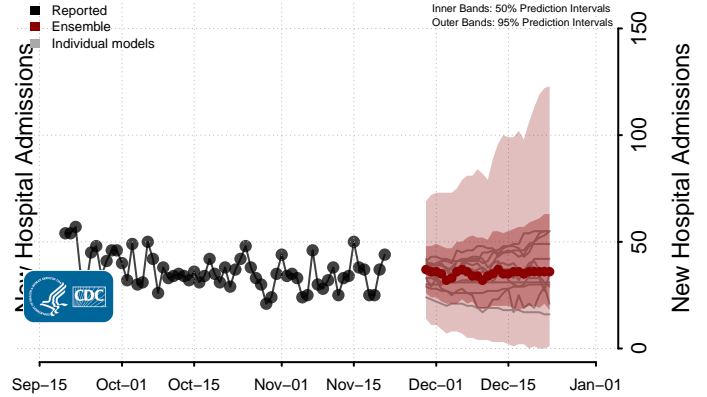
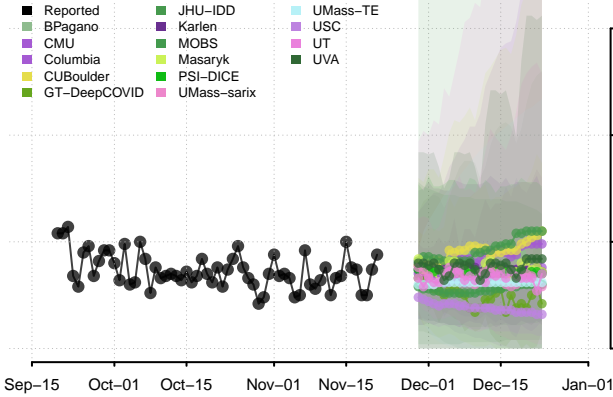


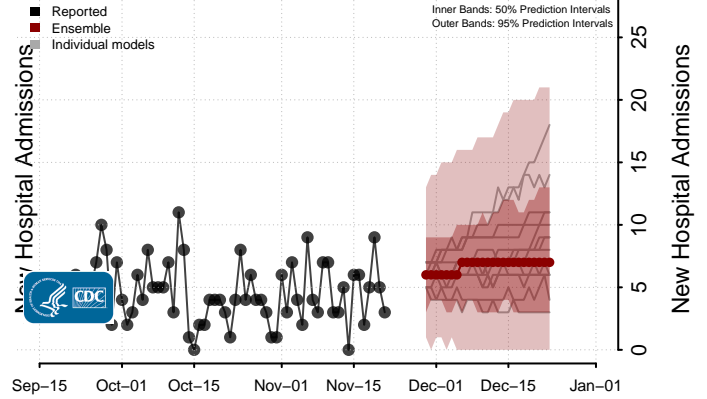
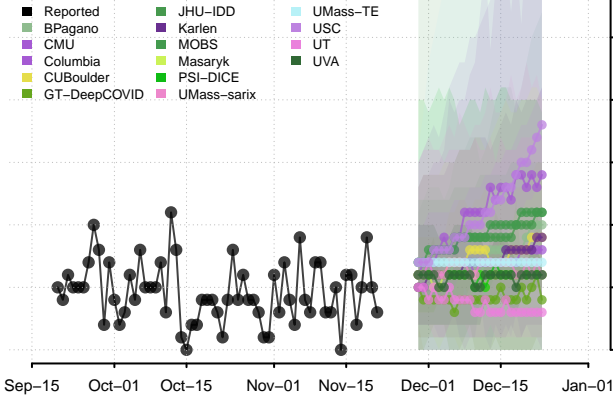
National**



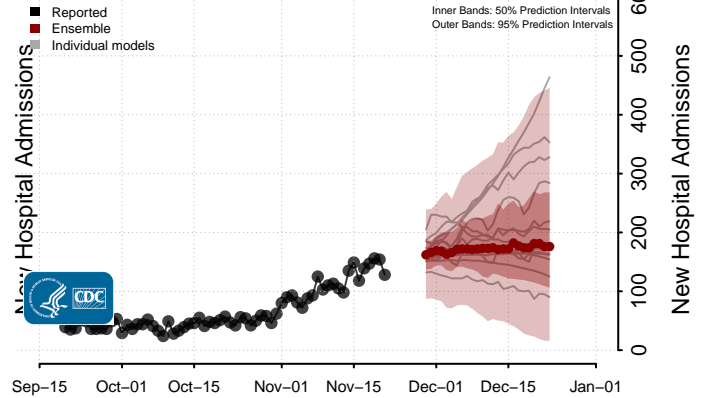
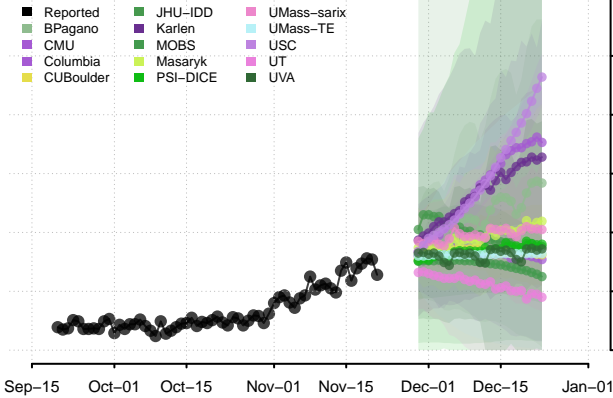
Alabama



Alaska

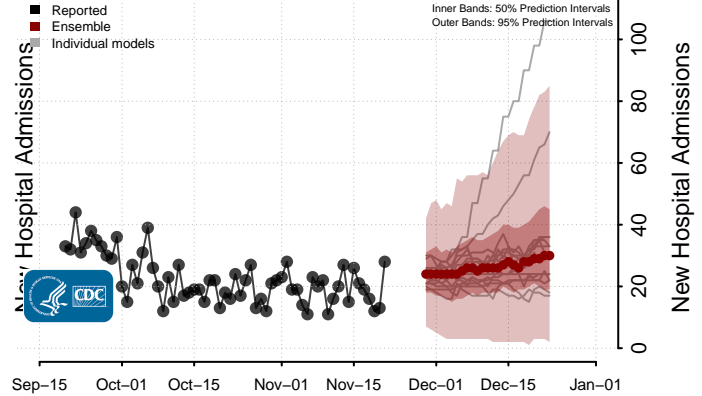
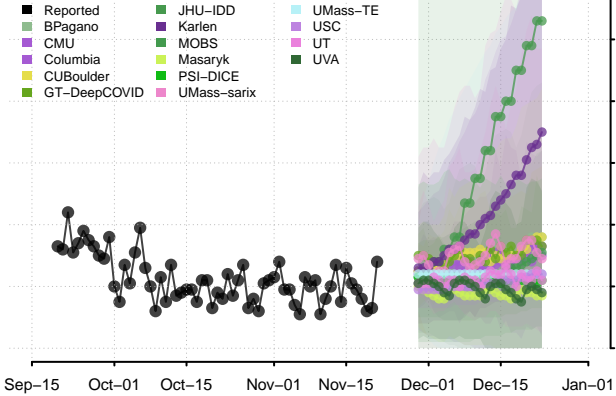


Arizona

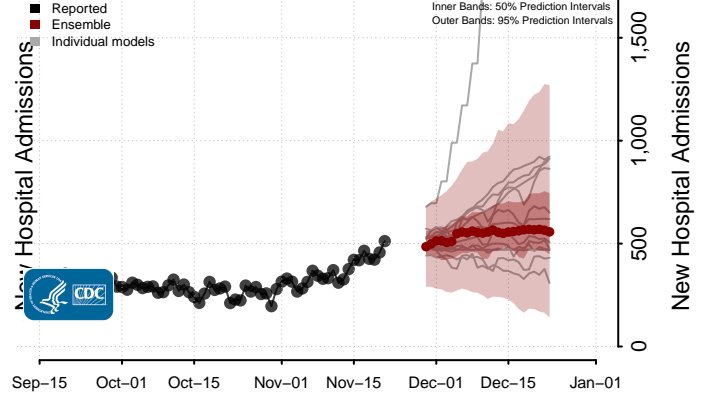
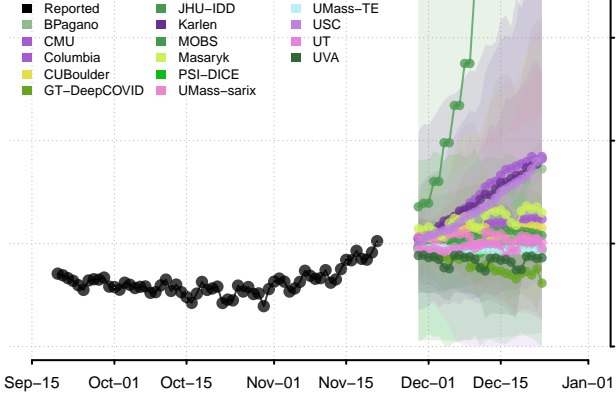


**New daily confirmed COVID-19 hospital admissions may increase in this location over the next four weeks. For these locations, the ensemble forecast indicates a median daily probability of 0.75 or greater that more hospital admissions will be reported in the last seven days of the forecast than the median in the last seven days of reported data.

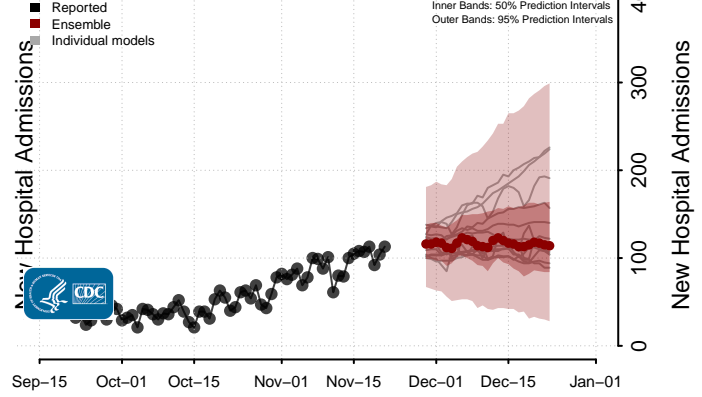
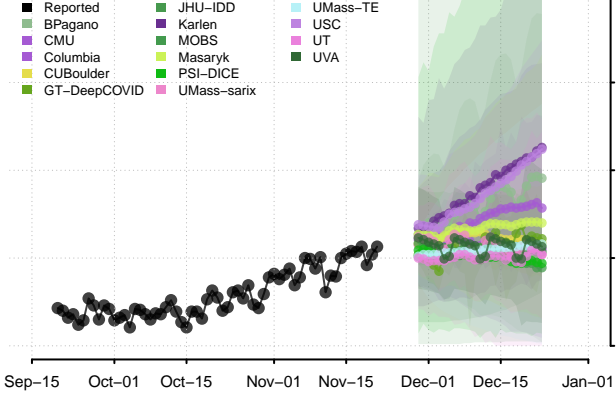
Arkansas



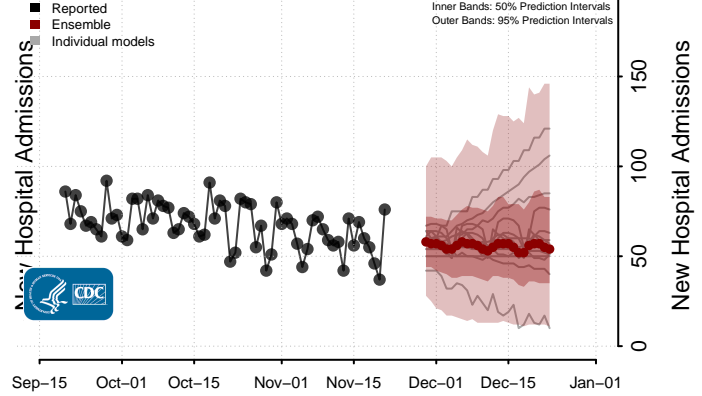
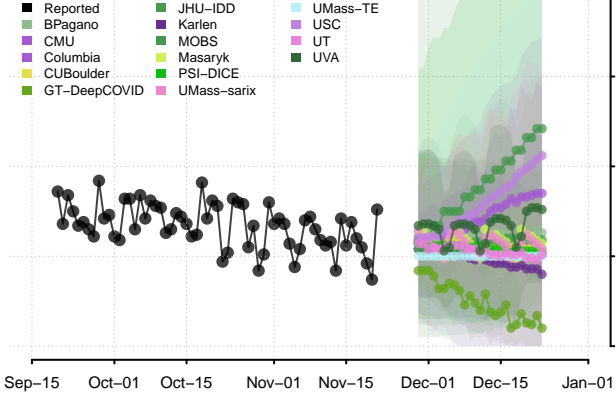
California**



Colorado

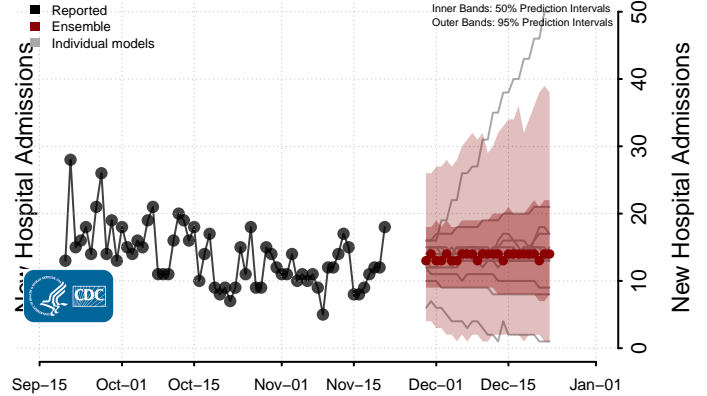
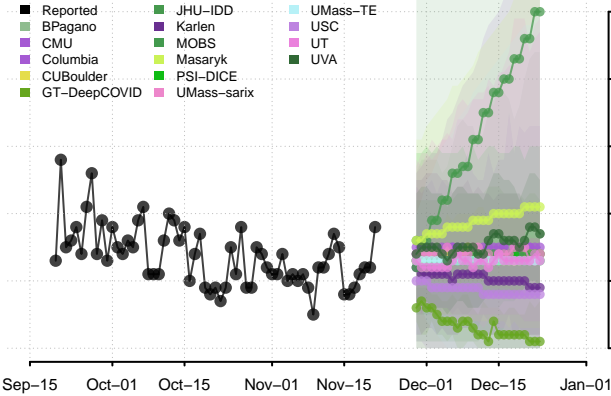


Connecticut

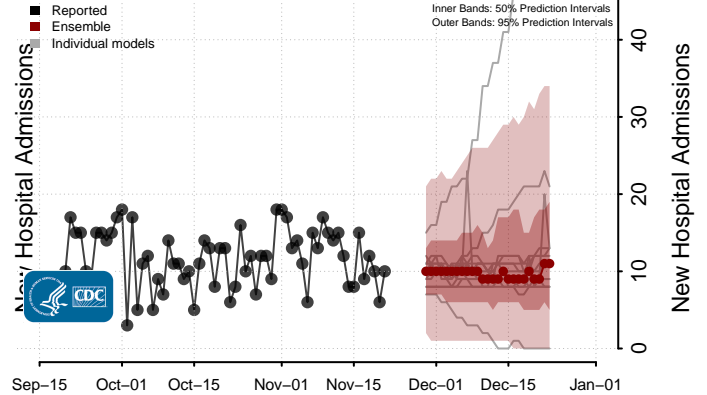
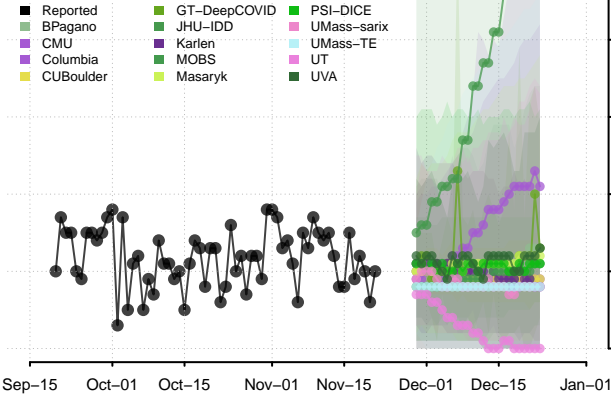


**New daily confirmed COVID-19 hospital admissions may increase in this location over the next four weeks. For these locations, the ensemble forecast indicates a median daily probability of 0.75 or greater that more hospital admissions will be reported in the last seven days of the forecast than the median in the last seven days of reported data.

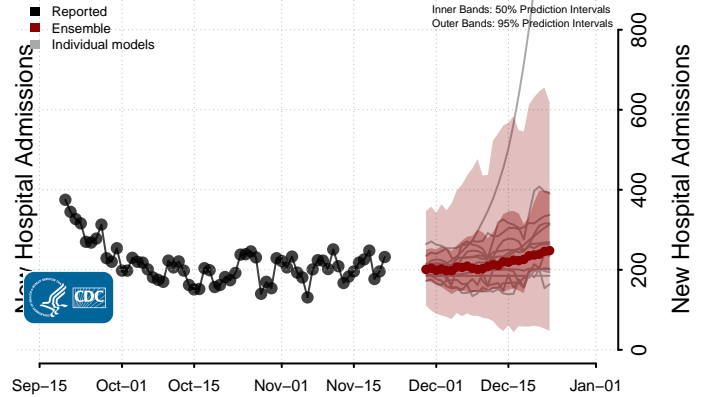
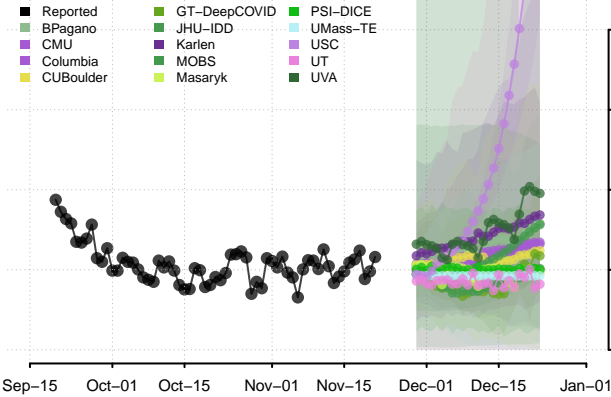
Delaware



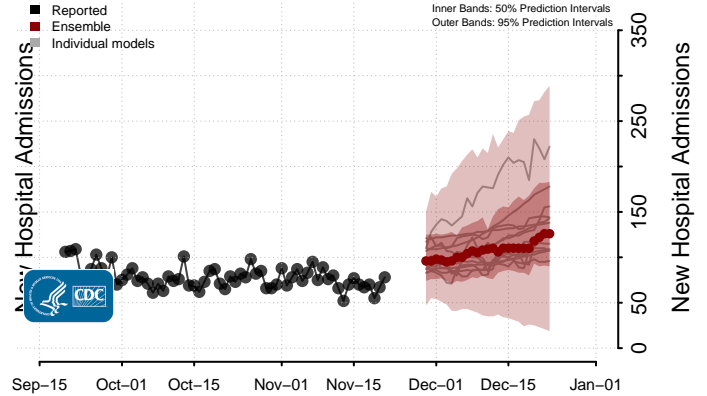
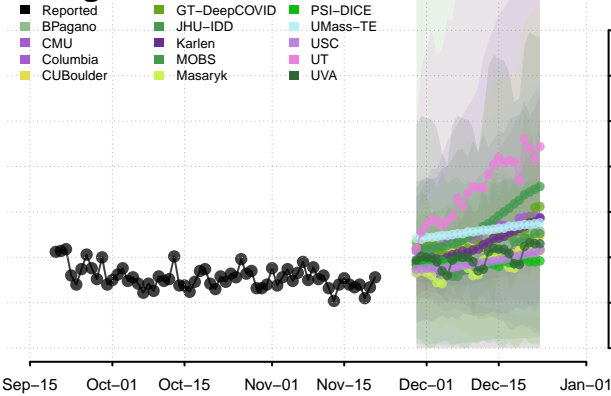
District of Columbia



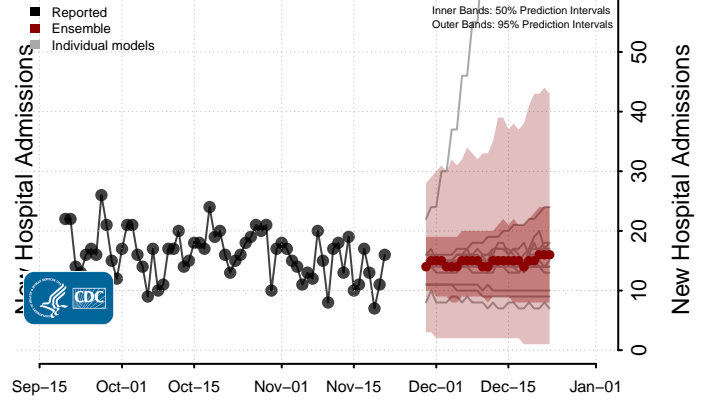
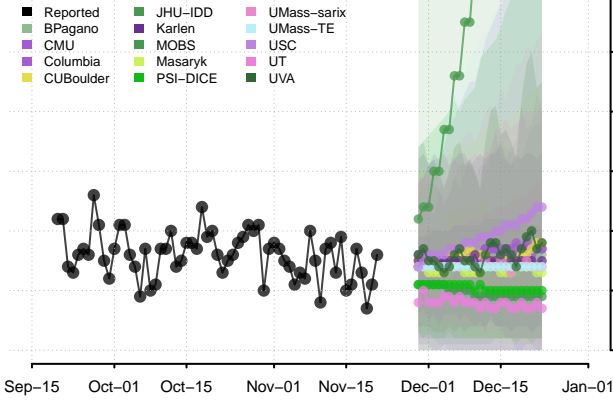
Florida



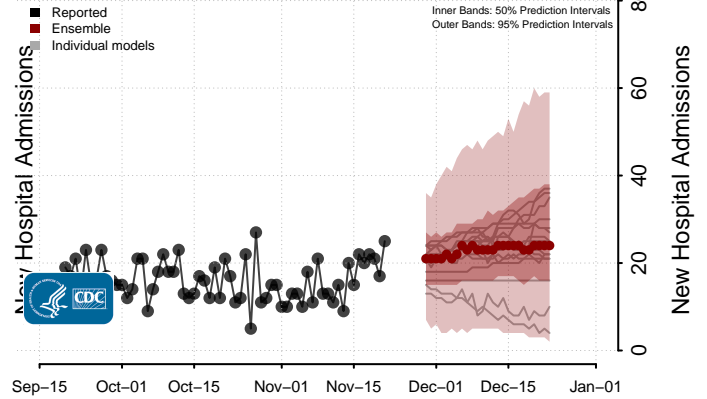
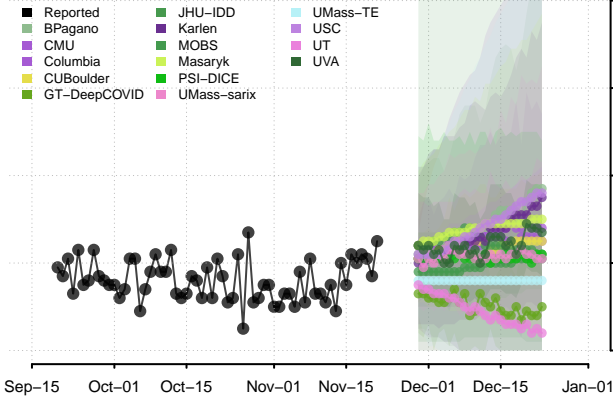
Georgia



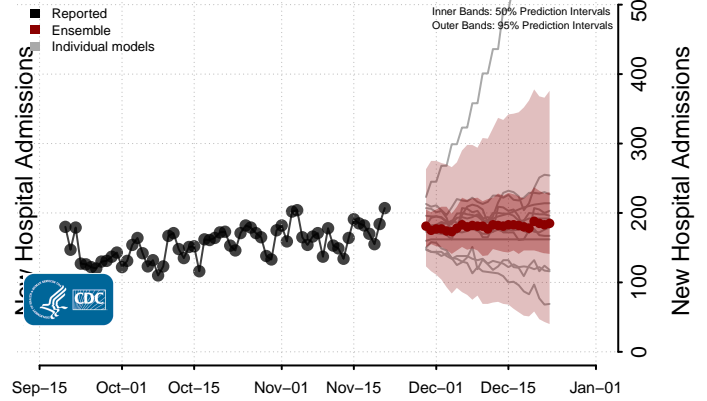
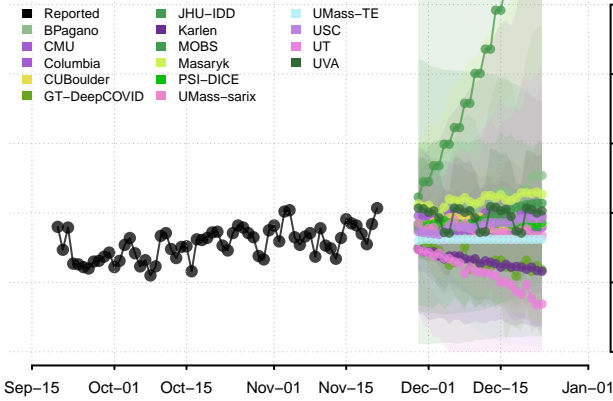
Hawaii



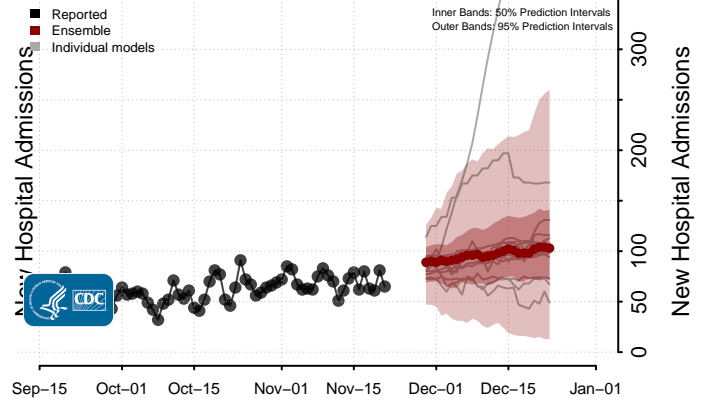
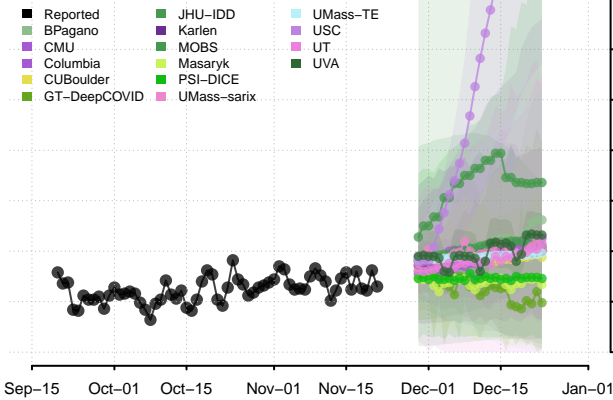
Idaho



Illinois

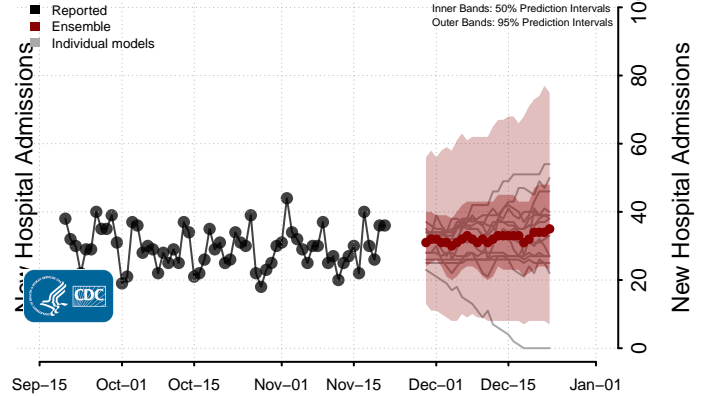
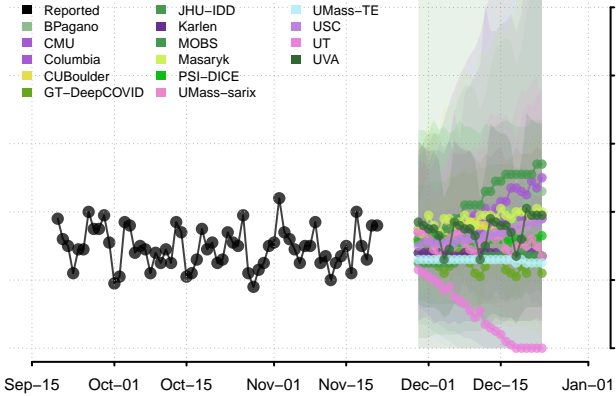


Indiana**

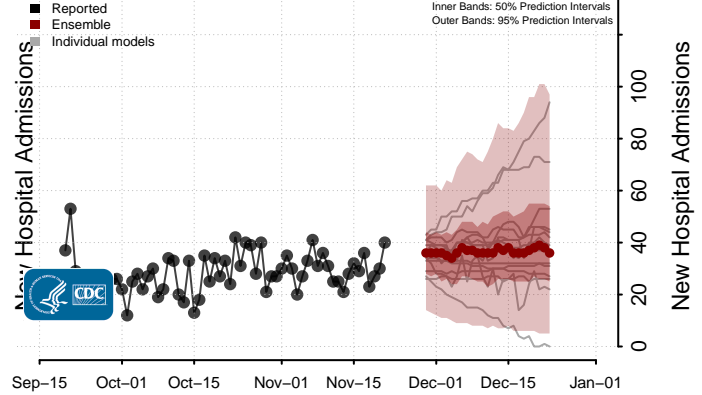
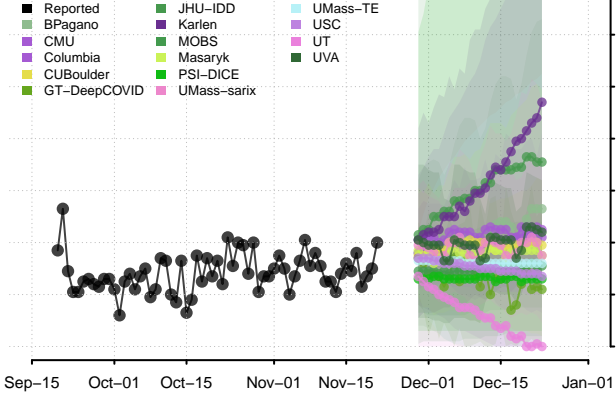


**New daily confirmed COVID-19 hospital admissions may increase in this location over the next four weeks. For these locations, the ensemble forecast indicates a median daily probability of 0.75 or greater that more hospital admissions will be reported in the last seven days of the forecast than the median in the last seven days of reported data.

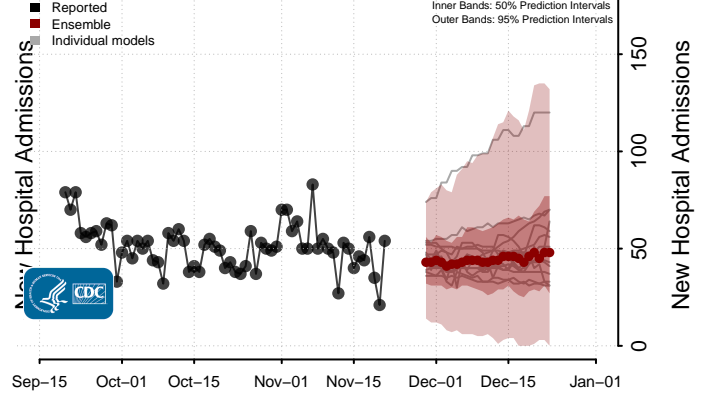
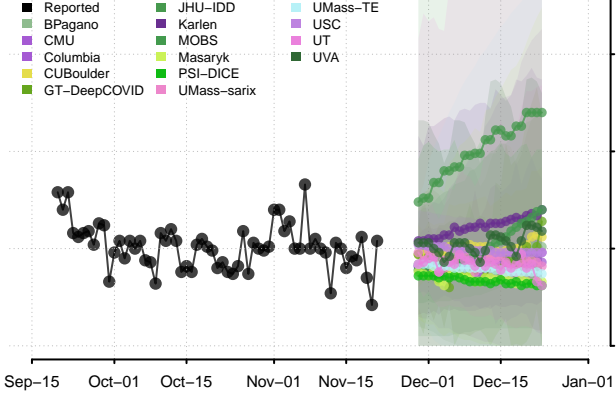
Iowa



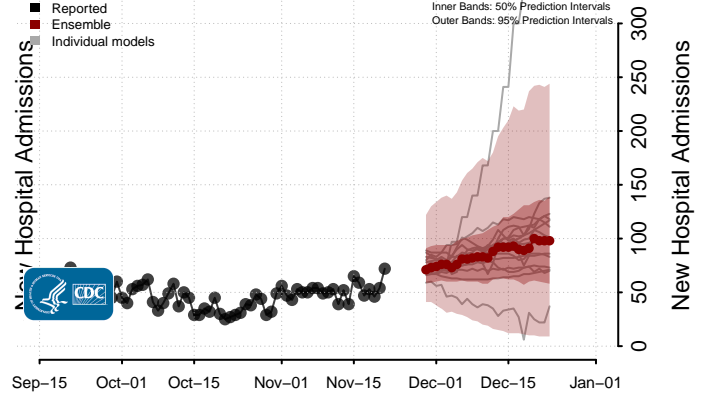
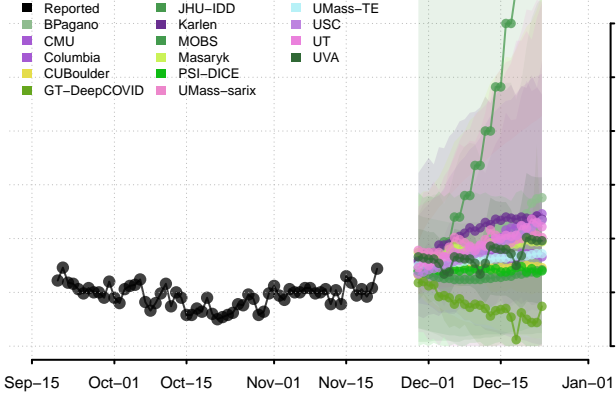
Kansas



Kentucky

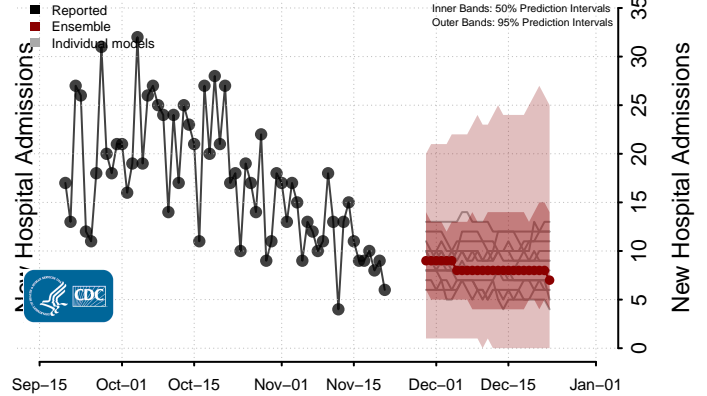
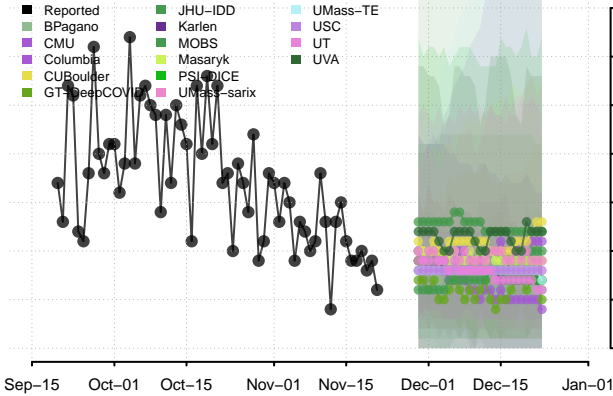


Louisiana**

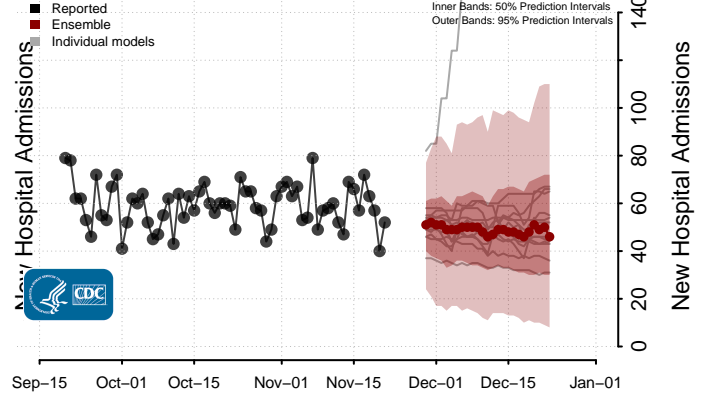
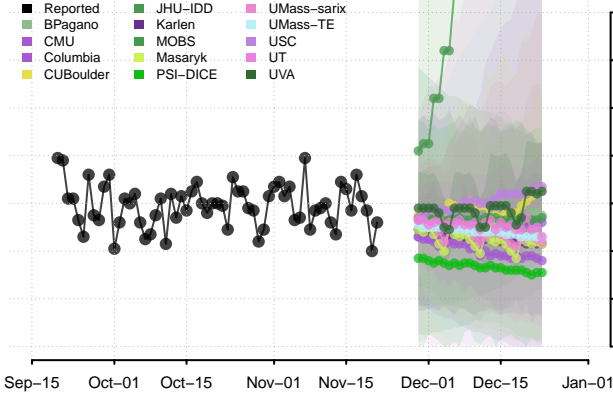


**New daily confirmed COVID-19 hospital admissions may increase in this location over the next four weeks. For these locations, the ensemble forecast indicates a median daily probability of 0.75 or greater that more hospital admissions will be reported in the last seven days of the forecast than the median in the last seven days of reported data.

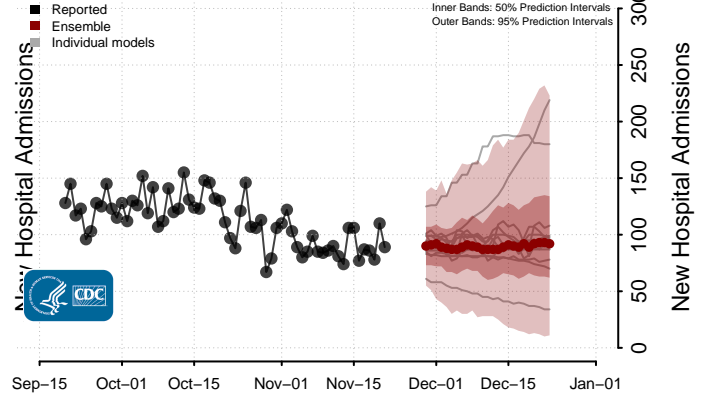
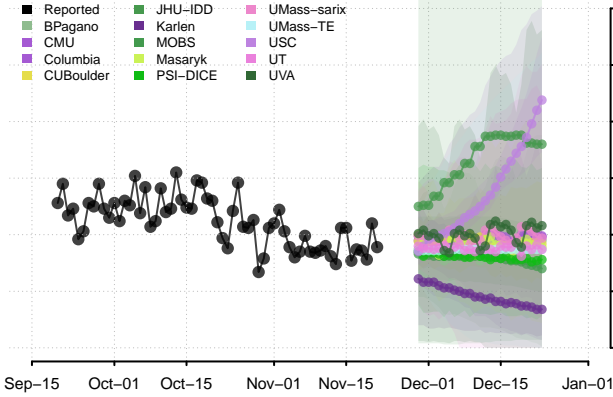
Maine



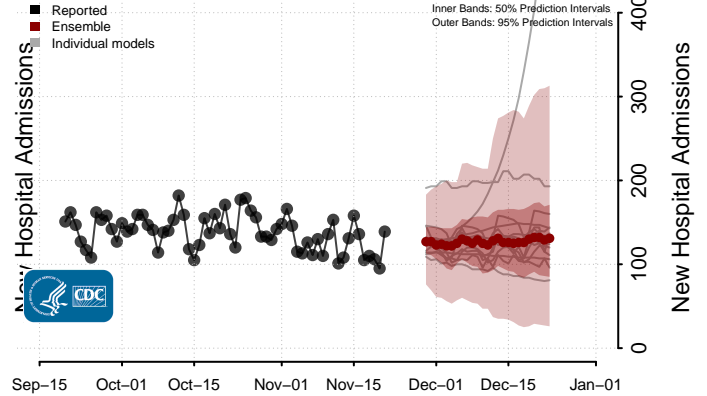
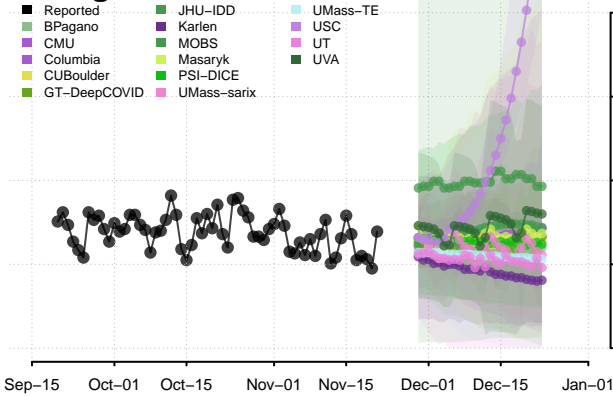
Maryland



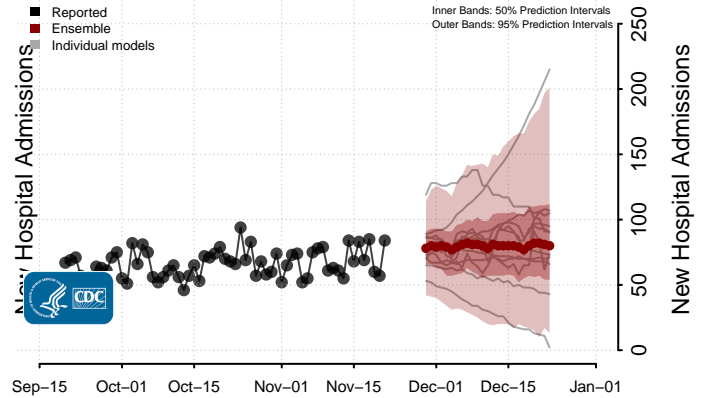
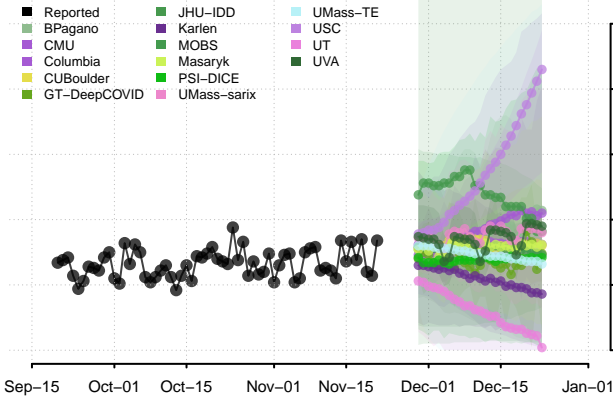
Massachusetts



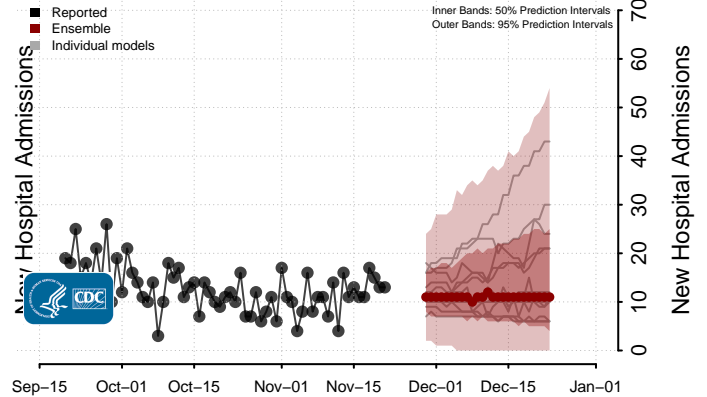
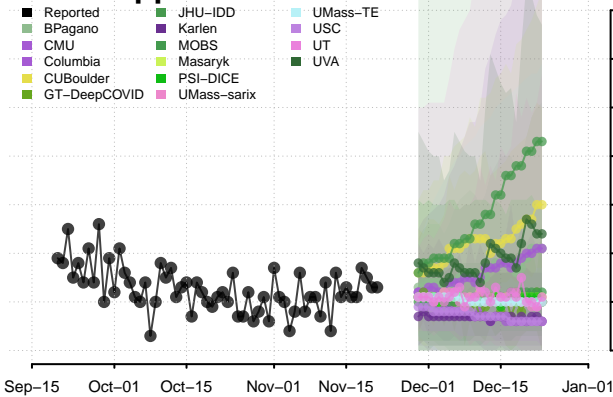
Michigan



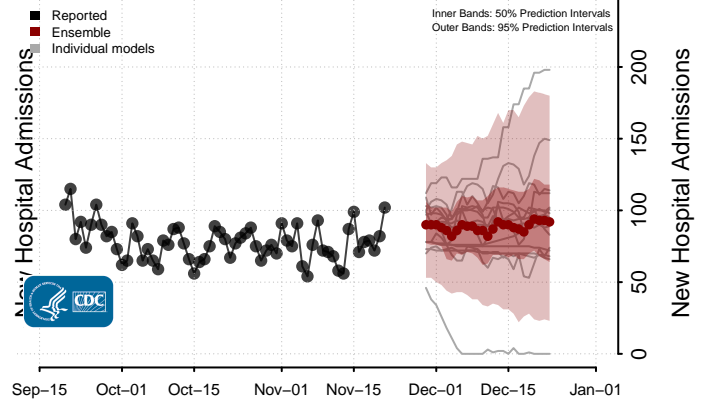
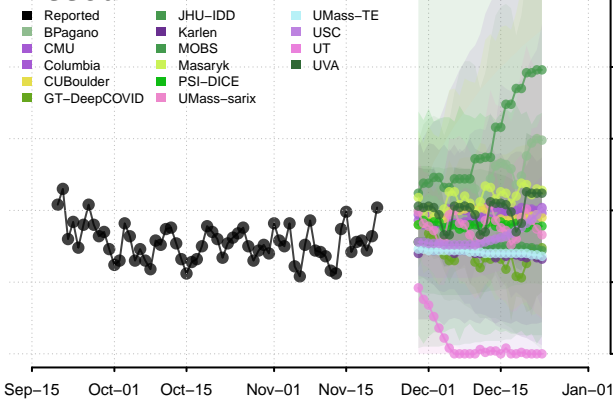
Minnesota



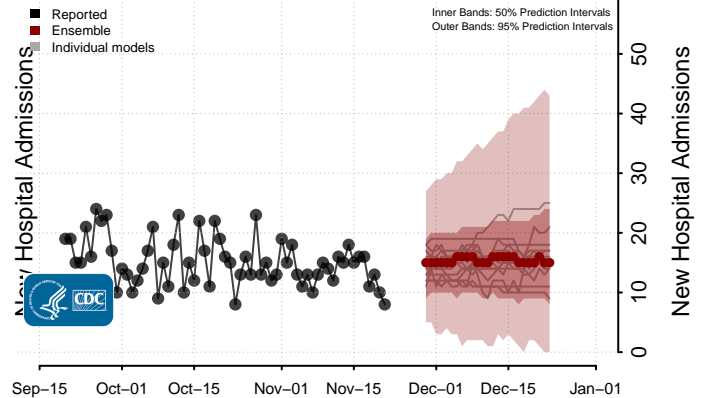
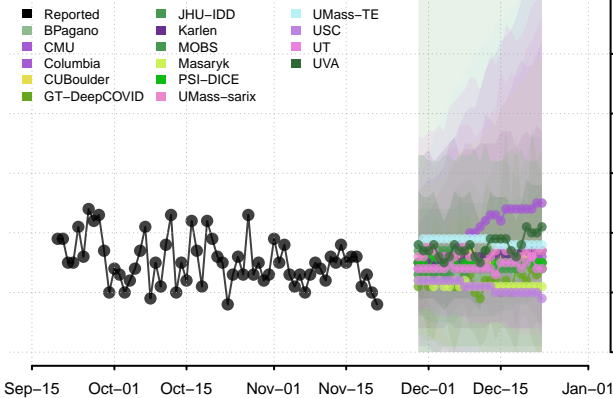
Mississippi



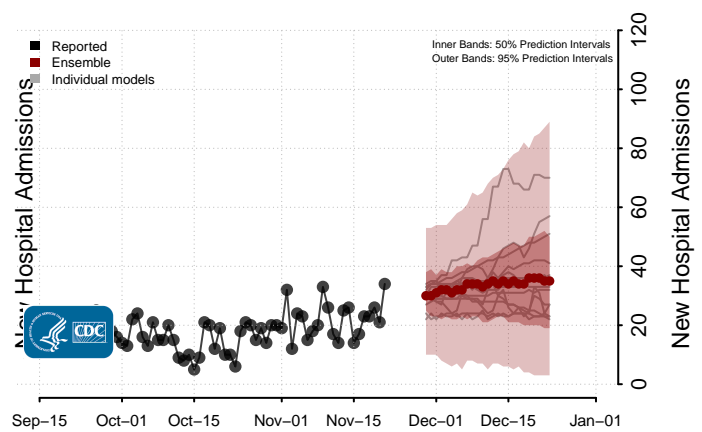
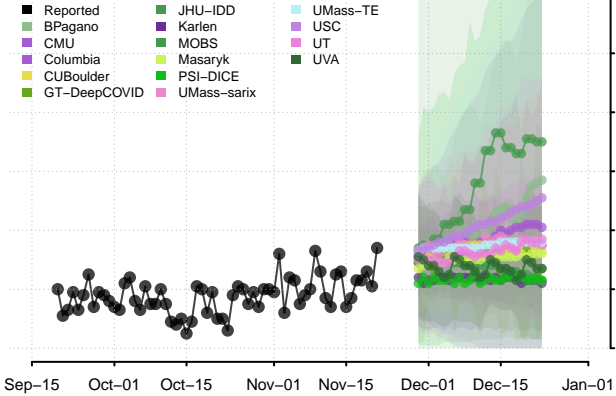
Missouri



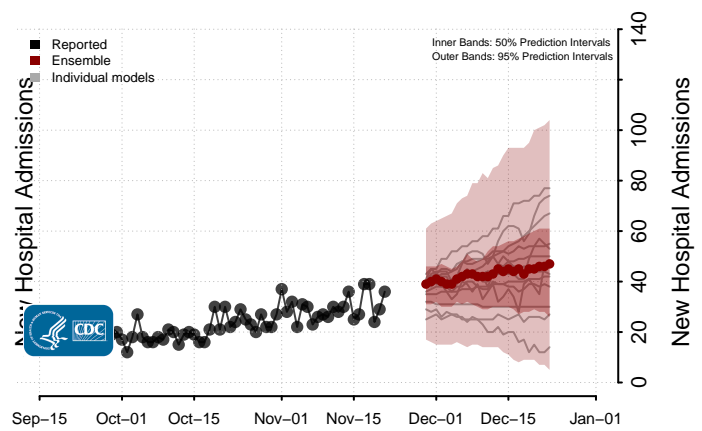
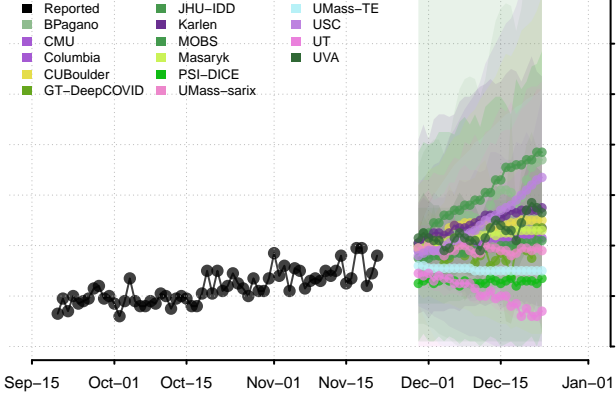
Montana



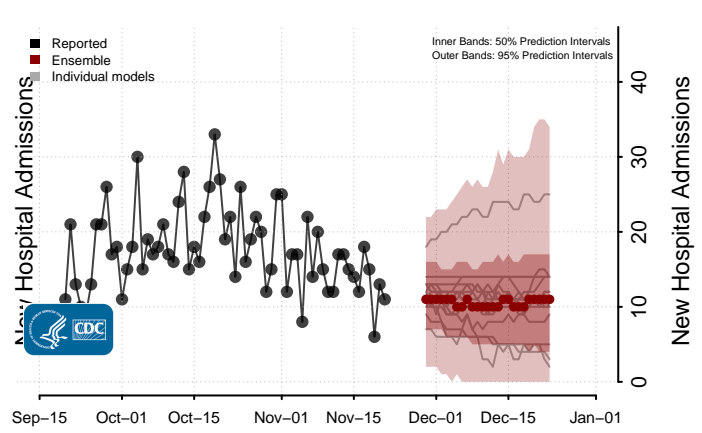
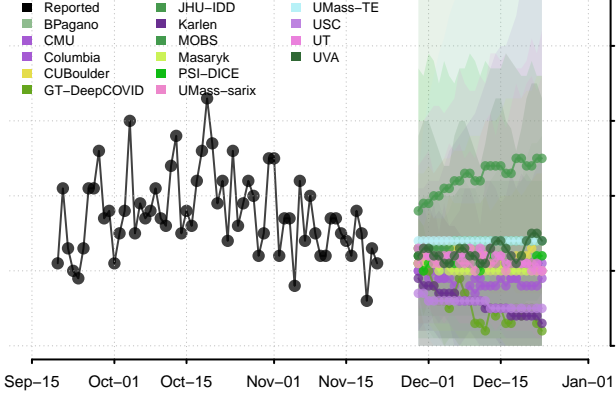
Nebraska



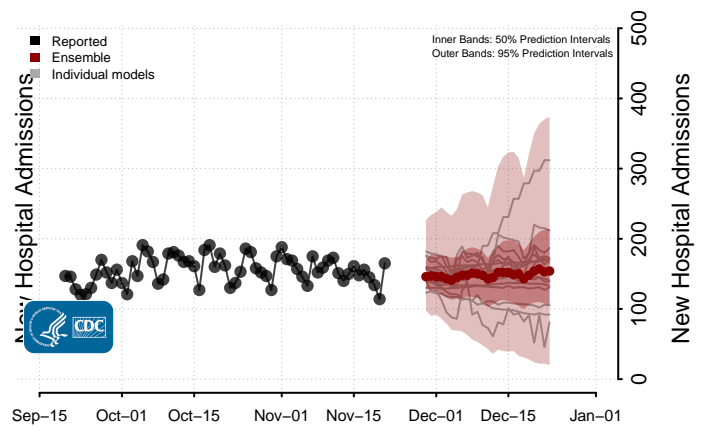
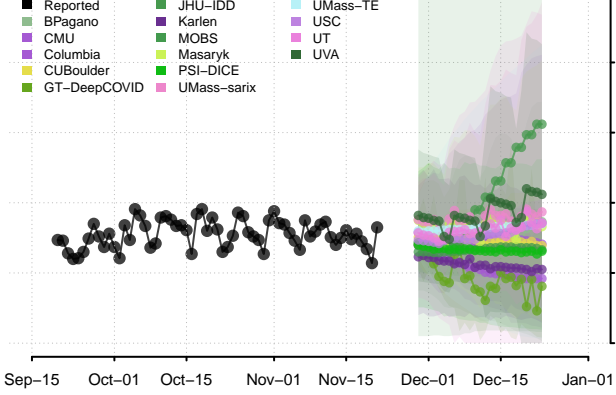
Nevada



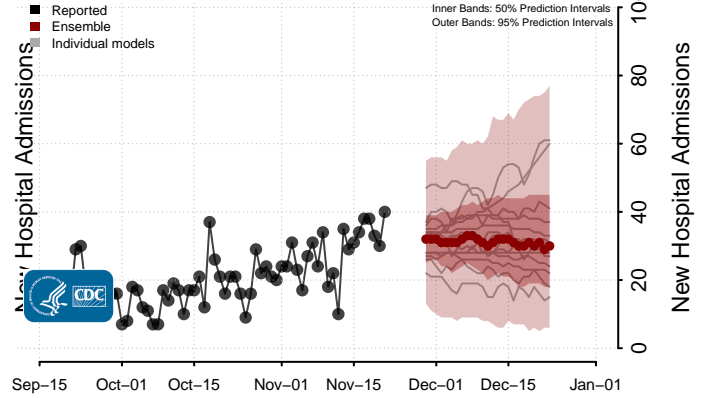
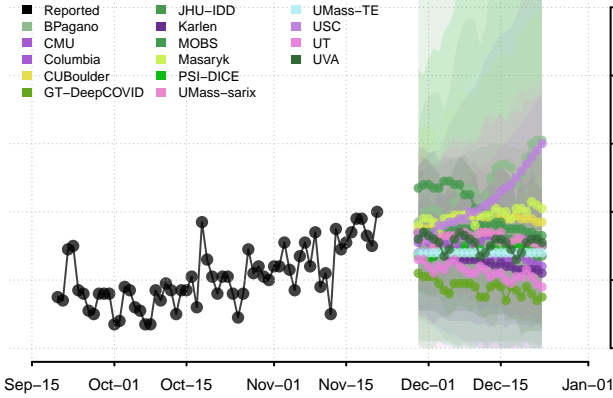
New Hampshire



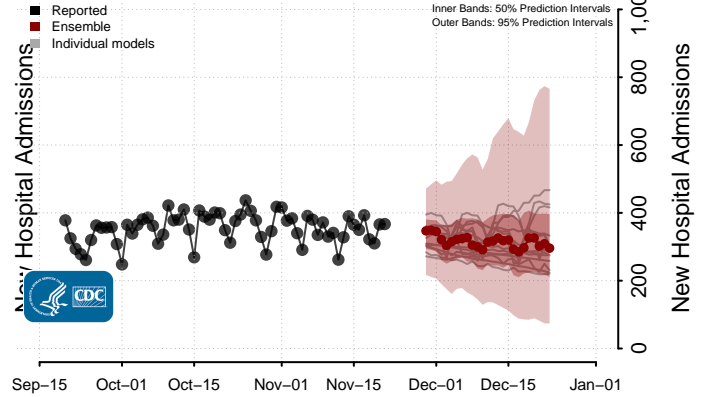
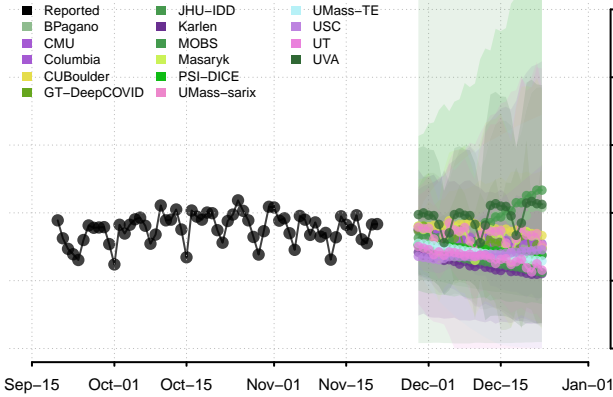
New Jersey



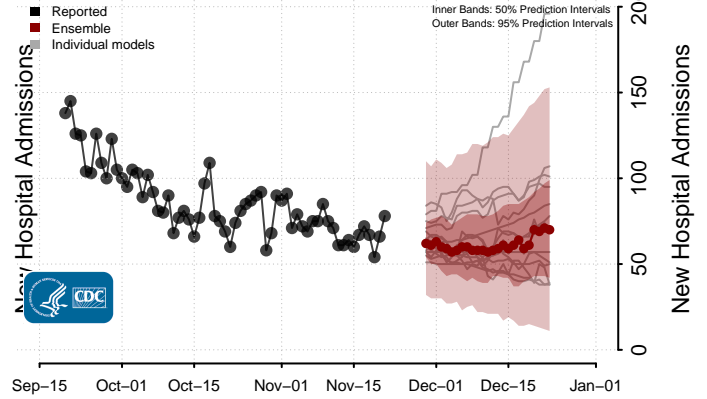
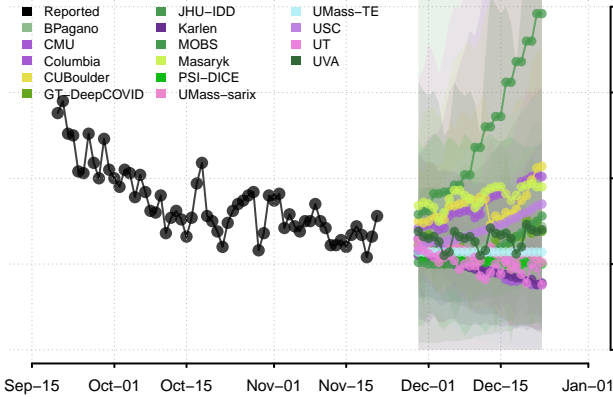
New Mexico



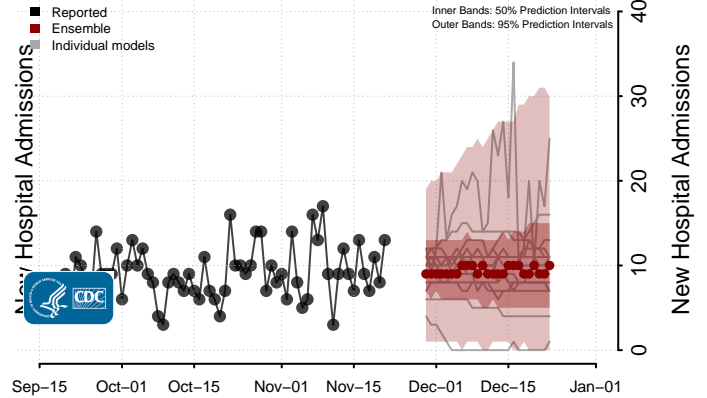
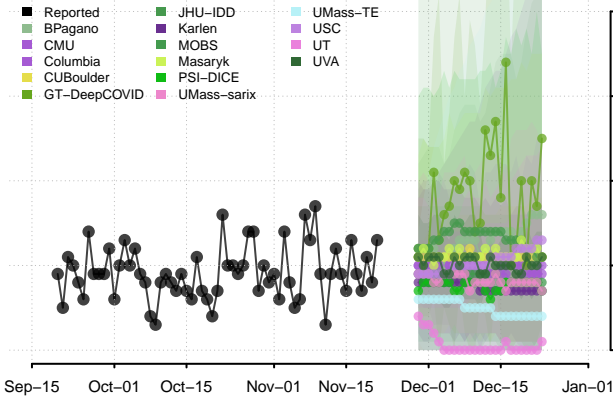
New York



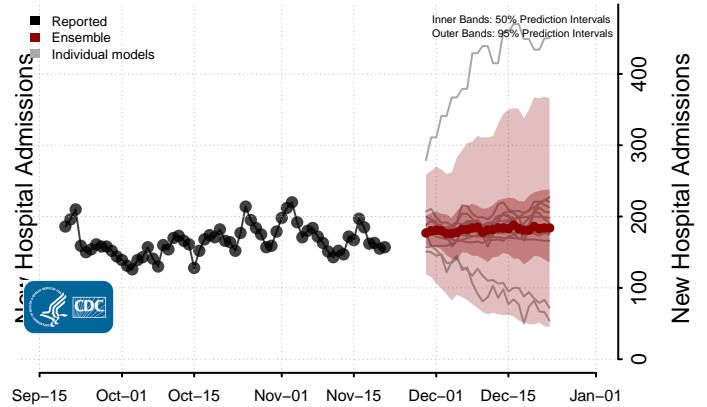
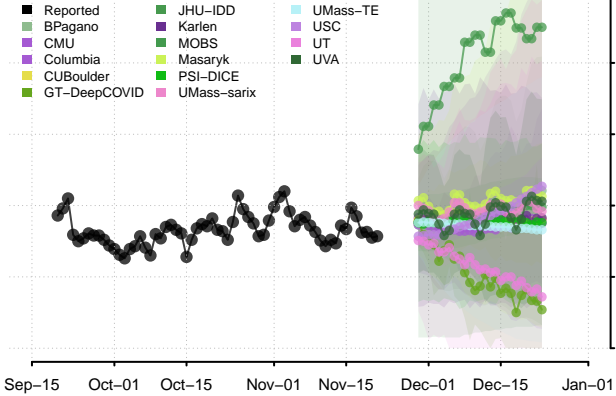
North Carolina



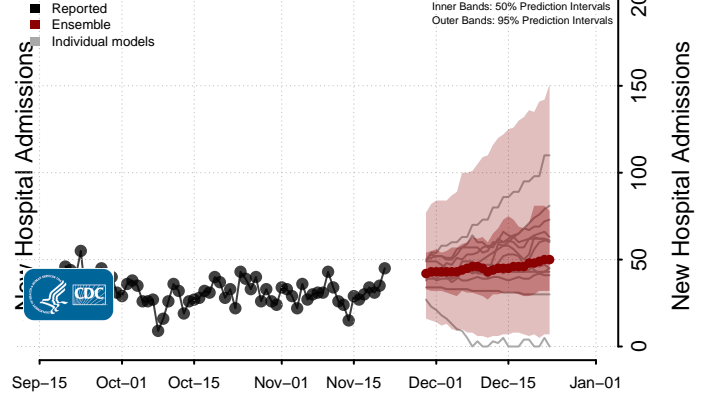
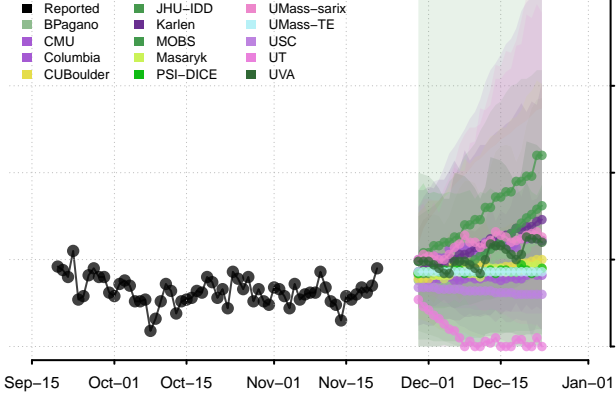
North Dakota



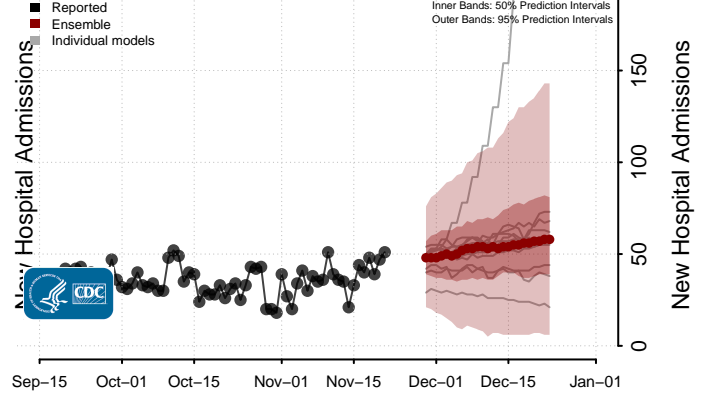
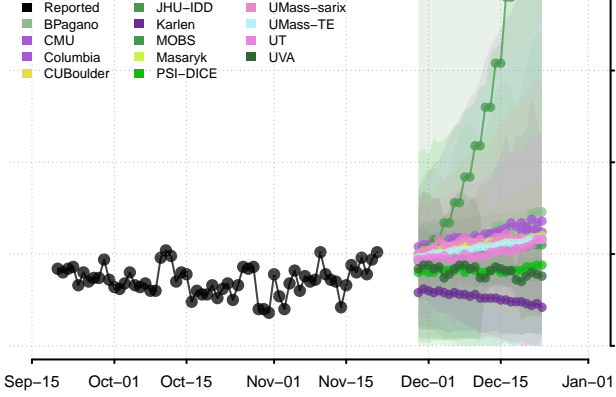
Ohio



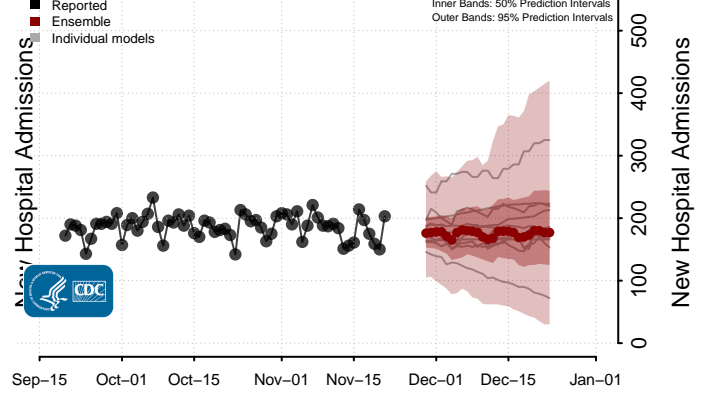
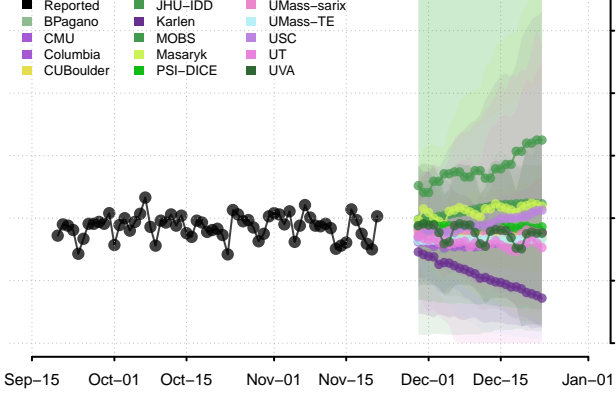
Oklahoma



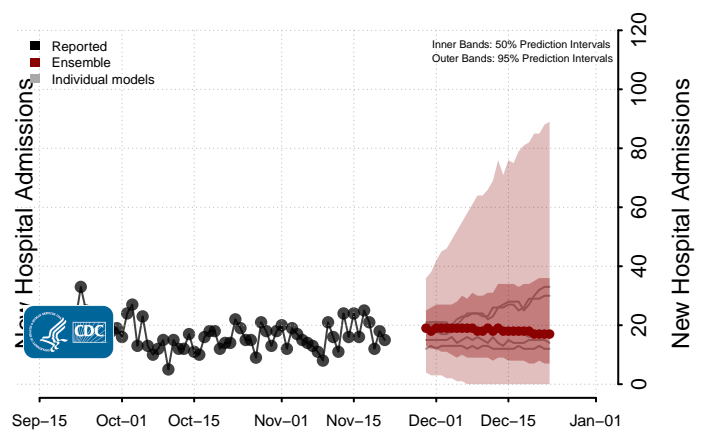
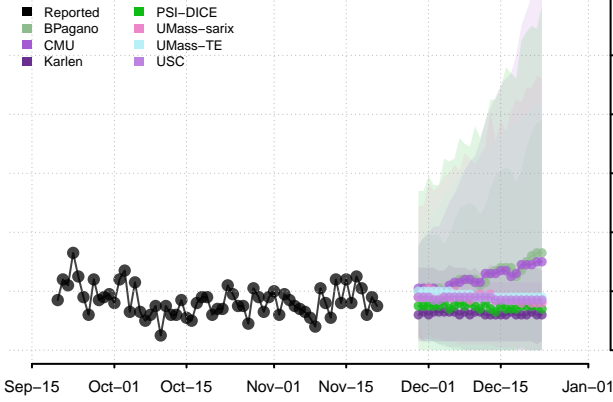
Oregon



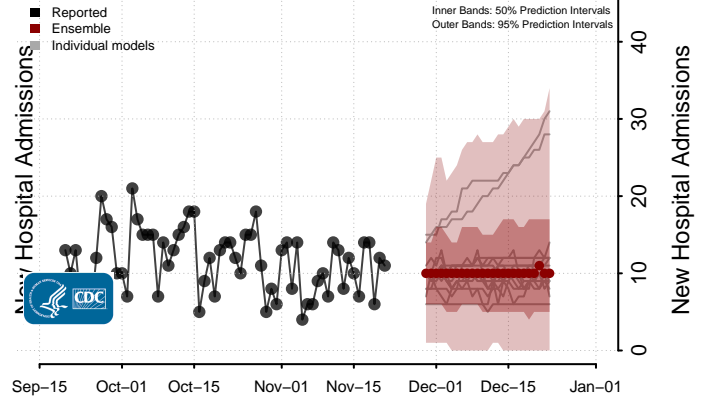
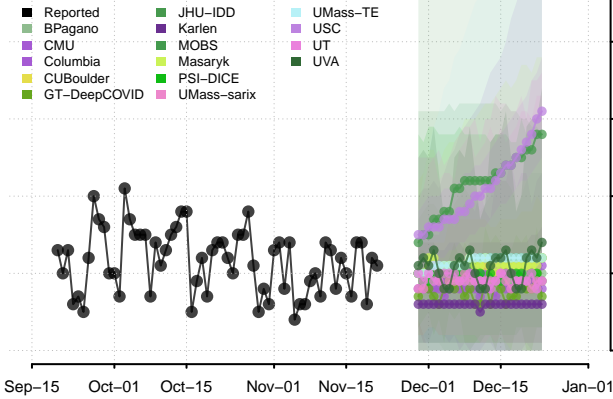
Pennsylvania



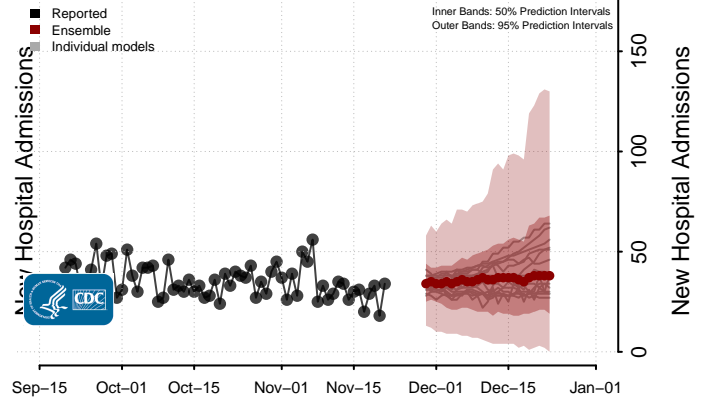
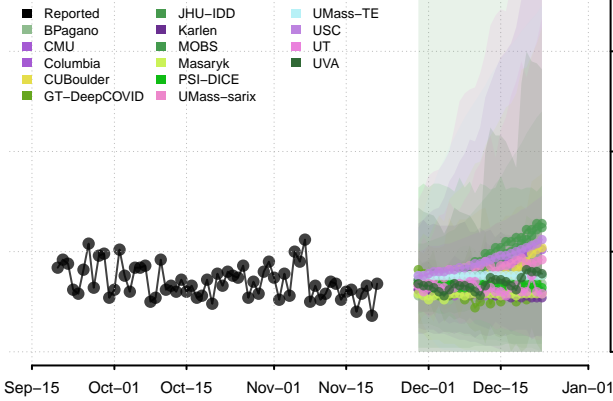
Puerto Rico



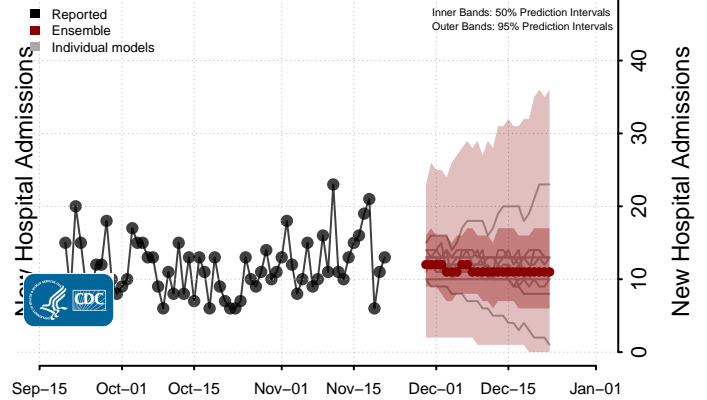
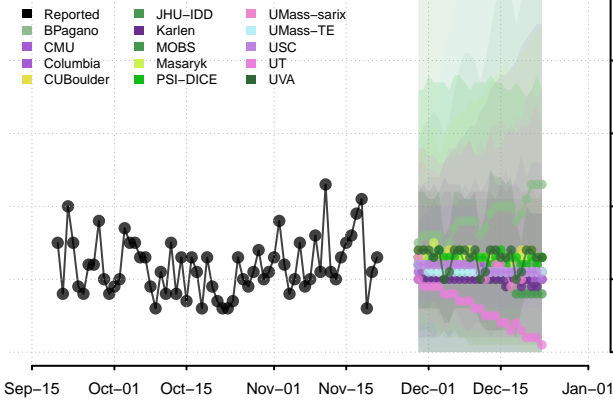
Rhode Island



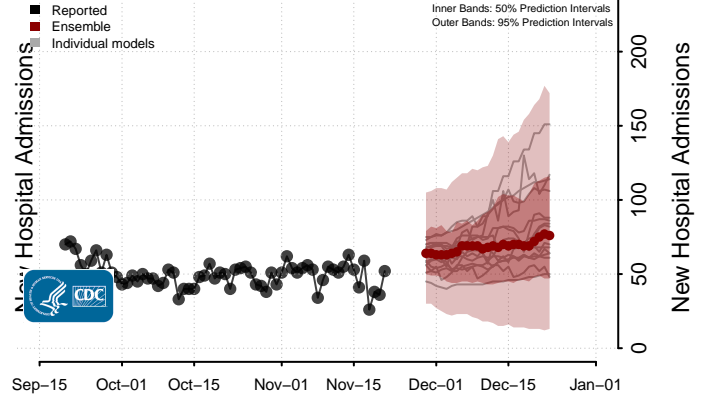
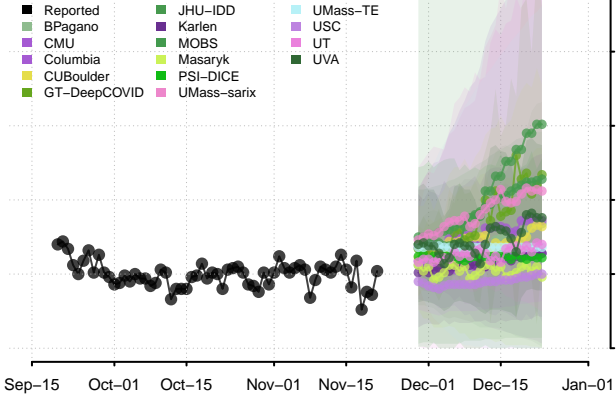
South Carolina



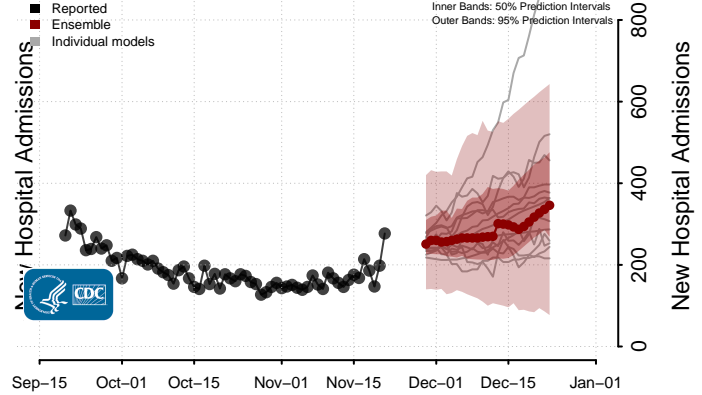
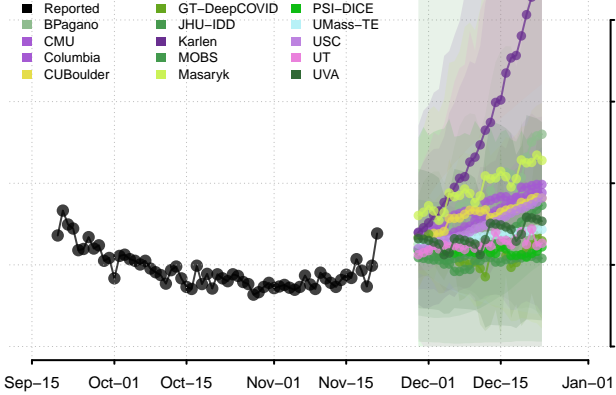
South Dakota



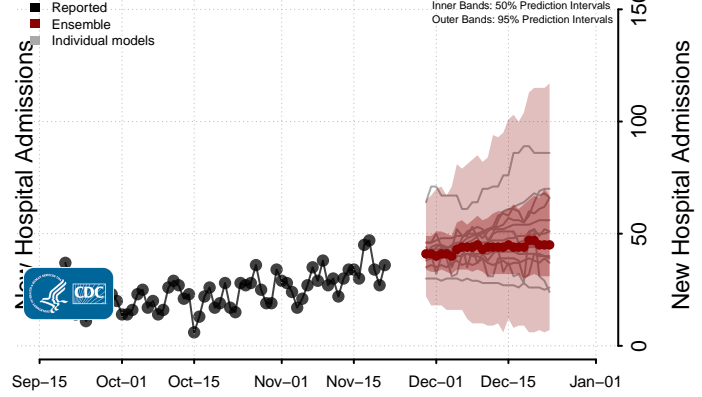
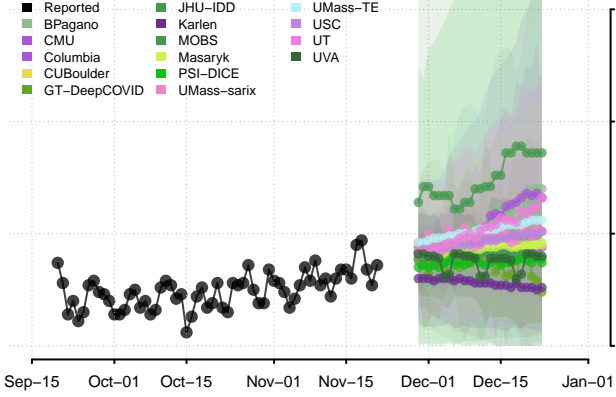
Tennessee**



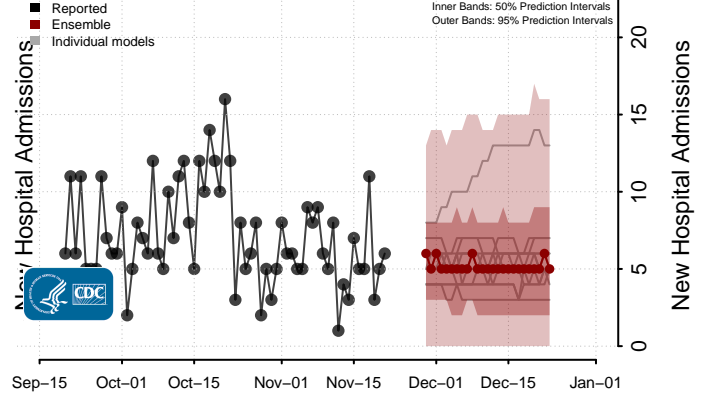
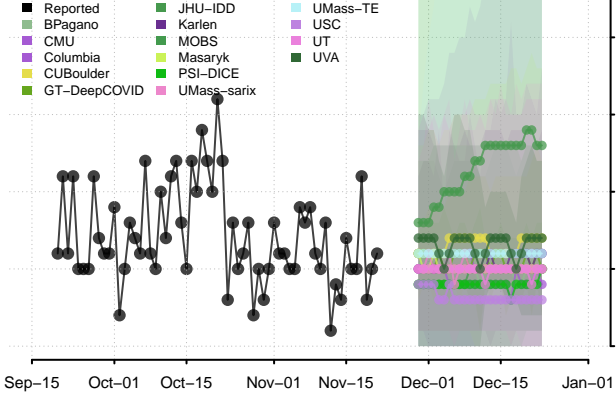
Texas**



Utah

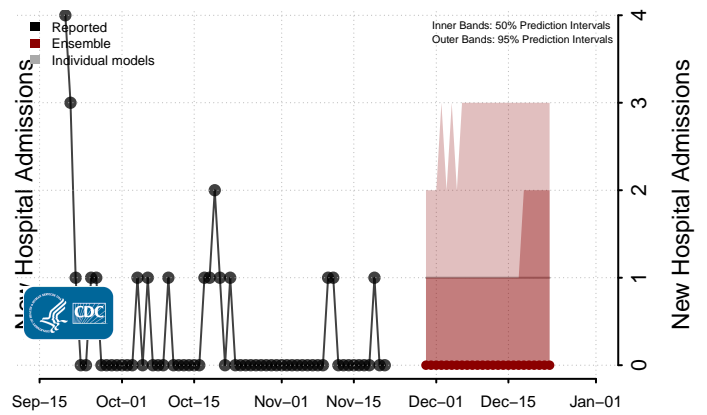
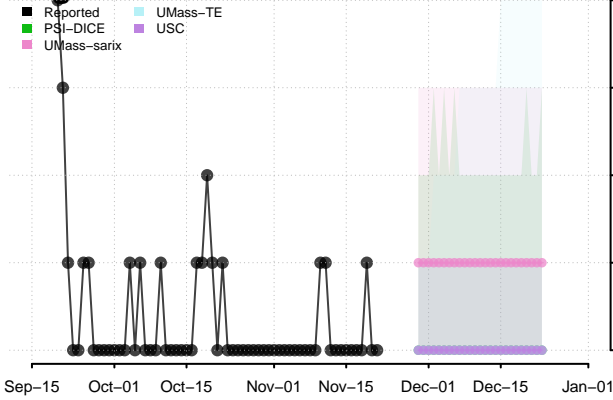


Vermont

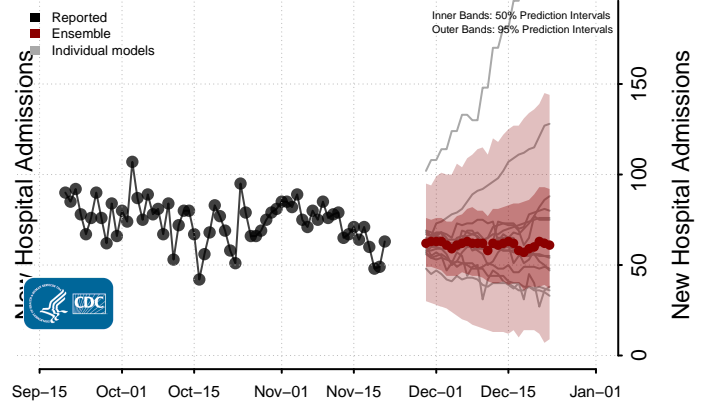
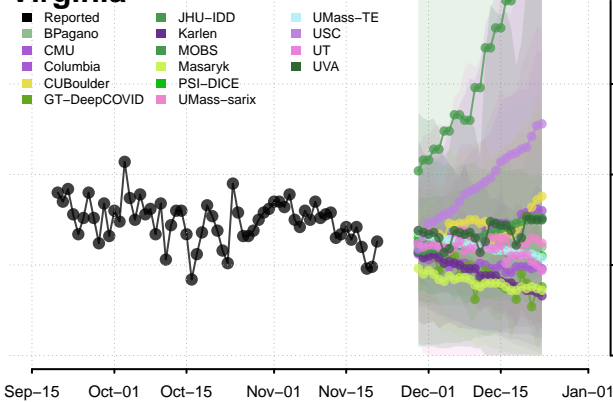


**New daily confirmed COVID-19 hospital admissions may increase in this location over the next four weeks. For these locations, the ensemble forecast indicates a median daily probability of 0.75 or greater that more hospital admissions will be reported in the last seven days of the forecast than the median in the last seven days of reported data.

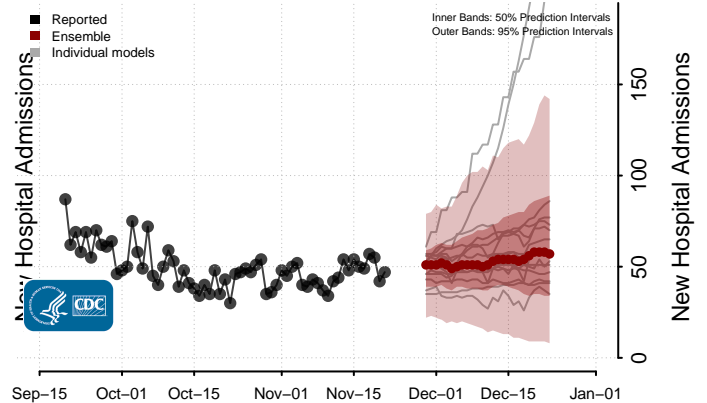
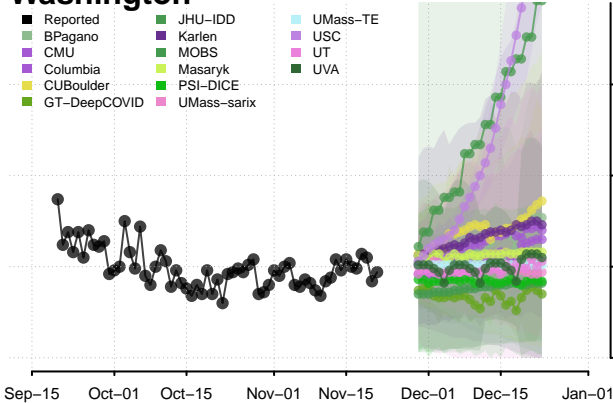
Virgin Islands



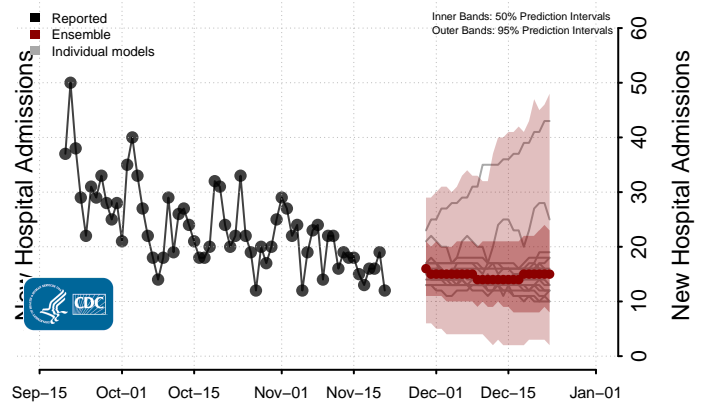
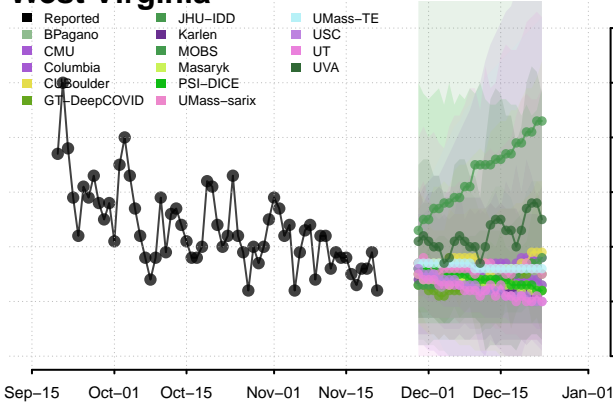
Virginia



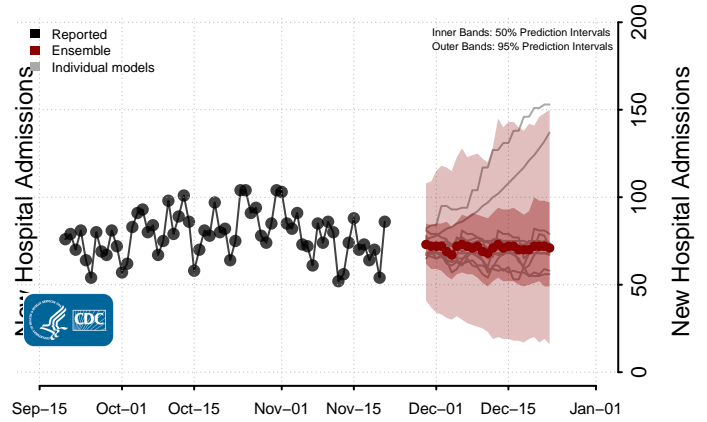
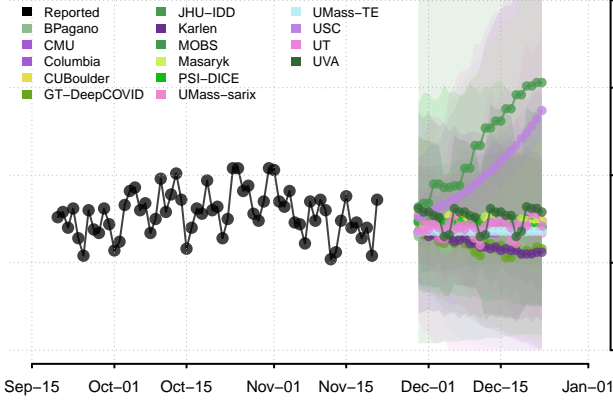
Washington



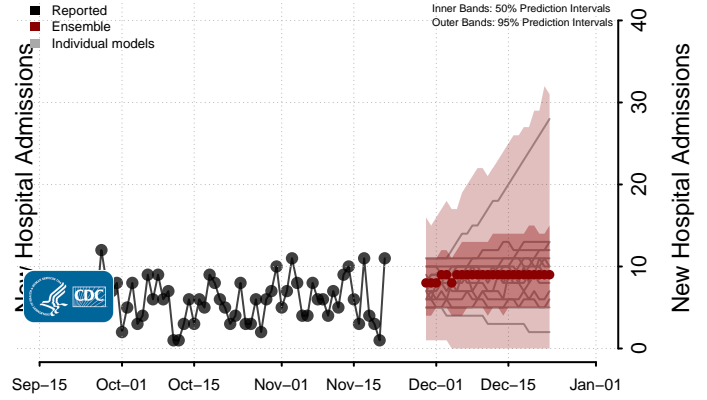
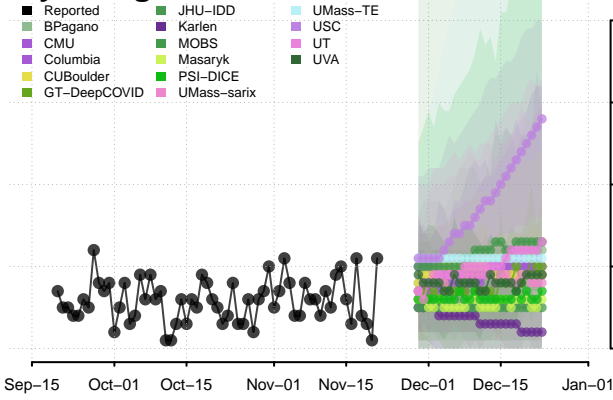
West Virginia



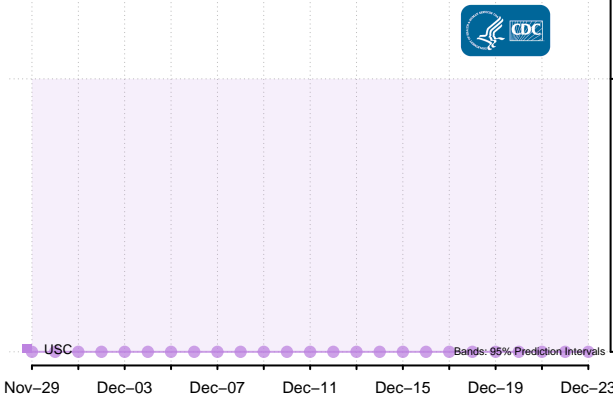
Wisconsin



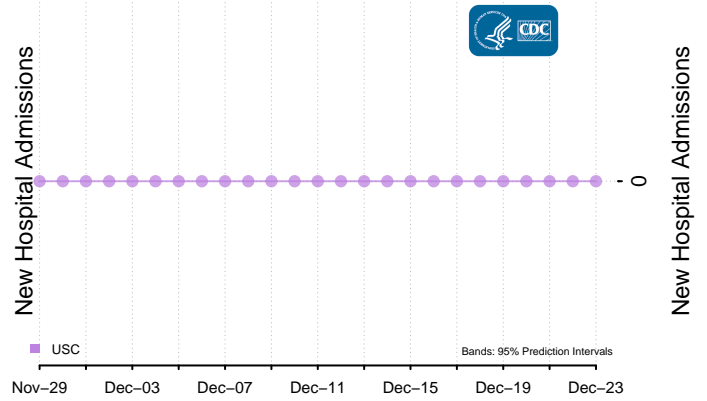
Wyoming



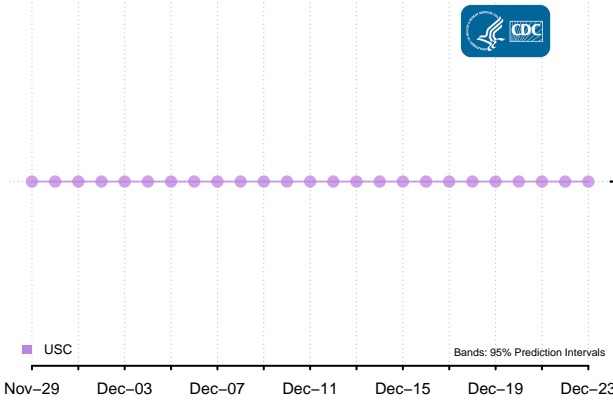
American Samoa***



Guam***



Northern Mariana Islands***



New Hospital Admissions