

# COVID Data Tracker

Maps, charts, and data provided by CDC, updates Mon-Fri by 8 pm ET

[COVID-19 Home](#) >

COVID Data Tracker will not update on Monday, October 10, 2022. Updates will resume on Tuesday, October 11, 2022.



CDC's [Surveillance for Emerging Threats to Mothers and Babies Network \(SET-NET\)](#) collects data on birth and infant outcomes among people with SARS-CoV-2 (COVID-19) infections during pregnancy in 2020 and 2021 and has been publicly reporting these data since November 2020. CDC will end public reporting of these data on November 17, 2022. Publications using SET-NET data are listed on the webpage [CDC Articles and Key Findings from SET-NET Data](#), and additional analyses of these data are in progress. [CDC also continues to support other efforts to learn more about the impact of COVID-19 during pregnancy.](#) Findings from these and other data sources have informed clinical guidance and prevention strategies.



CDC recommends use of [COVID-19 Community Levels](#) to determine the impact of COVID-19 on communities and to take [action](#). CDC also provides [Transmission Levels](#) (also known as Community Transmission) to describe the amount of COVID-19 spread within each county. Healthcare facilities use Transmission Levels to determine [infection control](#) interventions.

**United States**  
At a Glance

**Cases Total**  
Case Trends

**96,443,656**

**Deaths Total**  
Death Trends

**1,056,702**

**Current Hosp.**  
Admission Trends

**21,004**

**35.4% of People 5+ with**  
First Booster



Data Tracker Home

Cases, Deaths, & Testing

Case & Death Demographic Trends

Vaccination Distribution & Coverage

Vaccine Effectiveness & Breakthrough Surveillance

Health Equity

**Pediatric**

Pregnancy

People at Increased Risk

Wastewater Surveillance

Health Care Settings

[< Back to Pediatric](#)

## Data on COVID-19 during Pregnancy: Birth and Infant Outcomes

Health departments report information on cases of COVID-19 to CDC, including pregnancy status. State and local health departments have the option of providing additional data on pregnant people with COVID-19 and their infants. These data are collected as part of CDC's [Surveillance for Emerging Threats to Mothers and Babies Network \(SET-NET\)](#). Thirty-four jurisdictions have reported data. Data included are only from individuals with a first positive SARS-CoV-2 test result in calendar years 2020 and 2021. [View Footnotes and Additional Information](#)

Get Email Updates

Sign up to receive the COVID Data Tracker Weekly Review.

Email Address:

Email Address

Submit

[What's this?](#)

**Data on COVID-19 during Pregnancy: Birth and Infant Outcomes**

Maternal infection from January 25, 2020 - December 31, 2021 using data reported to CDC as of September 9, 2022

[Pregnant People](#)
[Data by Month](#)
[Birth Outcomes](#)
[Live Births](#)

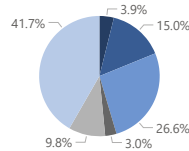
114,219

People with COVID-19 who Completed Pregnancy

View by Selected Category

- Race/Ethnicity
- Maternal Age

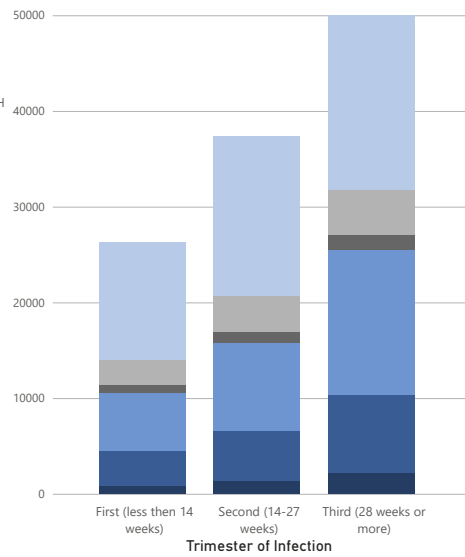
**Total Pregnancies with Known Timing of Infection**



**Number of Pregnant People with COVID-19 by Trimester of Infection**

Information on timing of infection was available for 114,218 (100.0%) people.

- Asian, NH
- Black, NH
- Hispanic or Latino
- Multiple/Other Race, NH
- Unknown Race/Eth.
- White, NH



Trimester of Infection	Number of Pregnancies
First (less than 14 weeks)	26263
Second (14-27 weeks)	37363
Third (28 weeks or more)	50592
<b>Total</b>	<b>114218</b>

Race/Ethnicity	Number of Pregnancies
White, NH	47643
Unknown Race/Eth.	11225
Multiple/Other Race, NH	3478
Hispanic or Latino	30368
Black, NH	17080
Asian, NH	4424
<b>Total</b>	<b>114218</b>

Maternal Age in Years	Number of Pregnancies
<20	5407
20-29	56463
30-39	48691
40-55	3605
Unknown Age	52
<b>Total</b>	<b>114218</b>

Get Email Updates

Sign up to receive the COVID Data Tracker Weekly Review.

Email Address:

Email Address

[What's this?](#)

Submit

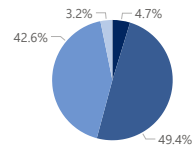
114,219

People with COVID-19 who Completed Pregnancy

View by Selected Category

- Race/Ethnicity
- Maternal Age

Total Pregnancies with Known Timing of Infection



Data on COVID-19 during Pregnancy: Birth and Infant Outcomes

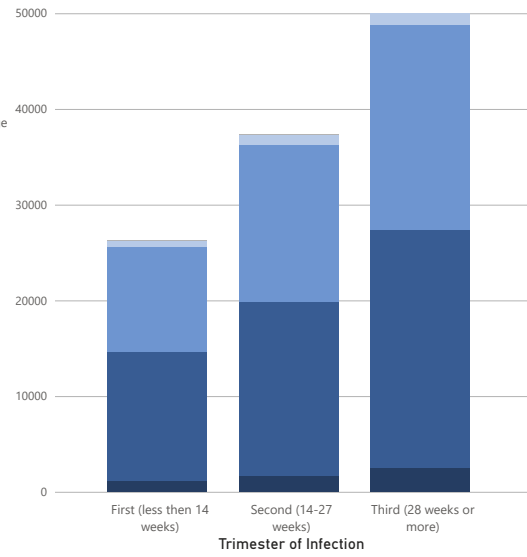
Maternal infection from January 25, 2020 - December 31, 2021 using data reported to CDC as of September 9, 2022

[Pregnant People](#)
[Data by Month](#)
[Birth Outcomes](#)
[Live Births](#)

Number of Pregnant People with COVID-19 by Trimester of Infection

Information on timing of infection was available for 114,218 (100.0%) people.

- Subcategory
- <20
- 20-29
- 30-39
- 40-55
- Unknown Age



Trimester of Infection	Number of Pregnancies
First (less than 14 weeks)	26263
Second (14-27 weeks)	37363
Third (28 weeks or more)	50592
Total	114218

Race/Ethnicity	Number of Pregnancies
White, NH	47643
Unknown Race/Eth.	11225
Multiple/Other Race, NH	3478
Hispanic or Latino	30368
Black, NH	17080
Asian, NH	4424
Total	114218

Maternal Age in Years	Number of Pregnancies
<20	5407
20-29	56463
30-39	48691
40-55	3605
Unknown Age	52
Total	114218

Get Email Updates

Sign up to receive the COVID Data Tracker Weekly Review.

Email Address:

[What's this?](#)

### Data on COVID-19 during Pregnancy: Birth and Infant Outcomes

Maternal infection from January 25, 2020 - December 31, 2021 using data reported to CDC as of September 9, 2022

**114,219**

People with COVID-19 who Completed Pregnancy

**115,832\***

Birth Outcomes among Pregnant People with COVID-19

**114,781**

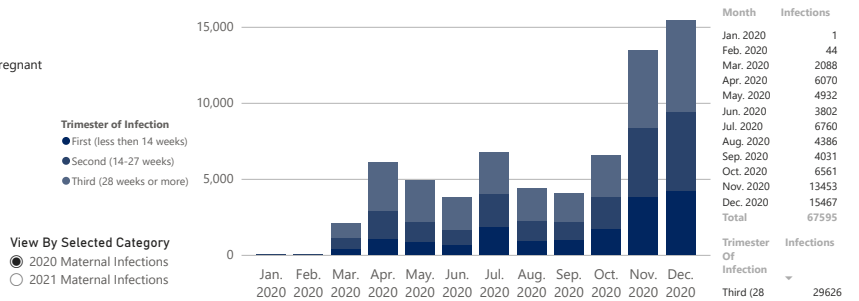
Live Born Infants

**1051**

Pregnancy Losses

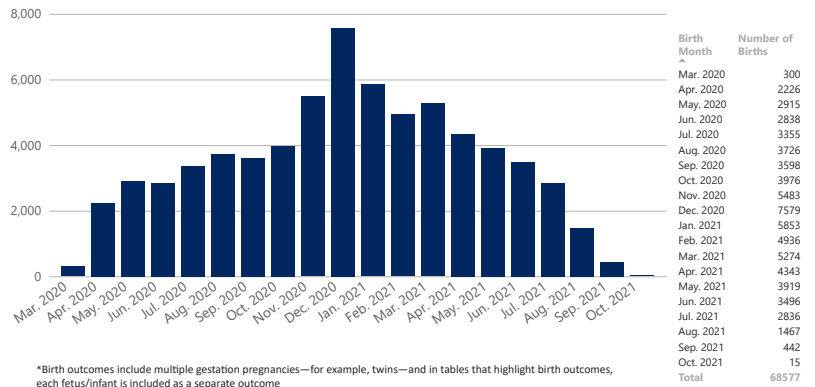
#### Number of Pregnant People with COVID-19 by Month of Infection

Information on month of infection was available for 114,218 (100%) people



#### Number of Births to People with COVID-19 by Month of Delivery

Birth month was available for 115,826 (100.0%) people.



\*Birth outcomes include multiple gestation pregnancies—for example, twins—and in tables that highlight birth outcomes, each fetus/infant is included as a separate outcome

Get Email Updates

Sign up to receive the COVID Data Tracker Weekly Review.

Email Address:

Email Address

[What's this?](#)

Submit

### Data on COVID-19 during Pregnancy: Birth and Infant Outcomes

Maternal infection from January 25, 2020 - December 31, 2021 using data reported to CDC as of September 9, 2022

Pregnant People    Data by Month    Birth Outcomes    Live Births

114,219

People with COVID-19 who Completed Pregnancy

115,832\*

Birth Outcomes among Pregnant People with COVID-19

114,781

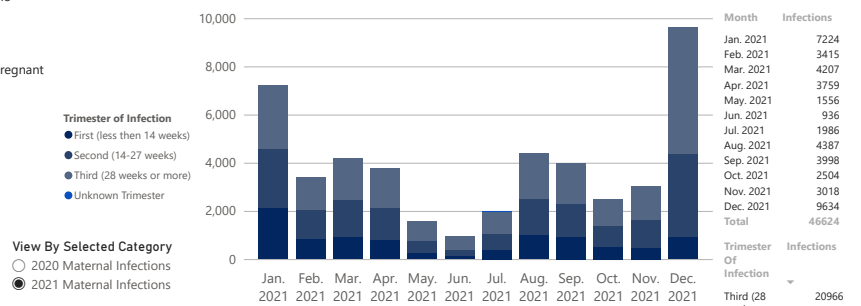
Live Born Infants

1051

Pregnancy Losses

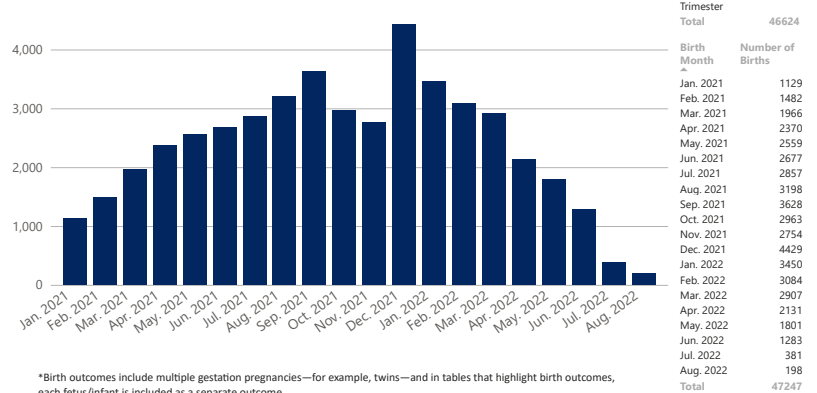
#### Number of Pregnant People with COVID-19 by Month of Infection

Information on month of infection was available for 114,218 (100%) people



#### Number of Births to People with COVID-19 by Month of Delivery

Birth month was available for 115,826 (100.0%) people.



\*Birth outcomes include multiple gestation pregnancies—for example, twins—and in tables that highlight birth outcomes, each fetus/infant is included as a separate outcome

✉ Get Email Updates

Sign up to receive the COVID Data Tracker Weekly Review.

Email Address:

[What's this?](#)

Submit

114,219

Birth Outcomes among Pregnant People with COVID-19

114,781

Live Born Infants

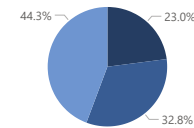
1051

Pregnancy Losses

View by Selected Category

- Trimester of Infection
- Race/Ethnicity
- Maternal Age
- Gestational Age

Total Pregnancies with Known Delivery Type



### Data on COVID-19 during Pregnancy: Birth and Infant Outcomes

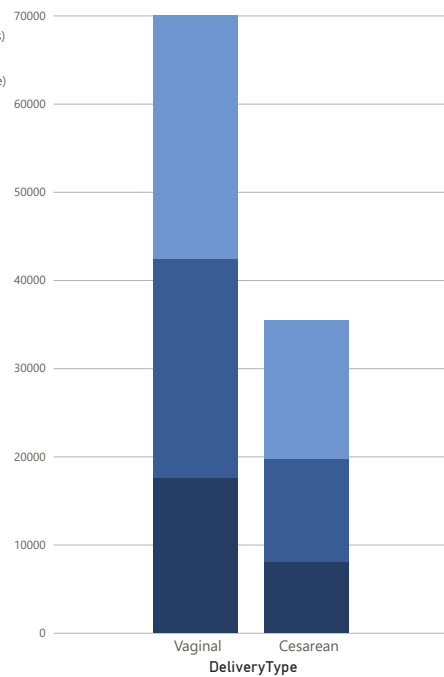
Maternal infection from January 25, 2020 - December 31, 2021 using data reported to CDC as of September 9, 2022

[Pregnant People](#)
[Data by Month](#)
[Birth Outcomes](#)
[Live Births](#)

#### Number of Infants Born Via Vaginal or Cesarean Delivery to People with COVID-19

Information on delivery type was available for 111,509 (96.3%) of birth outcomes.

- Subcategory
- First (less than 14 weeks)
  - Second (14-27 weeks)
  - Third (28 weeks or more)



Delivery Type	Number of Births
▲ Cesarean	35461
▲ Vaginal	76048
▲ Total	111509
▲ Trimester of Infection	Number of Births
▲ First (less than 14 weeks)	25600
▲ Second (14-27 weeks)	36528
▲ Third (28 weeks or more)	49381
▲ Total	111509
▲ Race/Ethnicity	Number of Births
▲ Asian, NH	4338
▲ Black, NH	16827
▲ Hispanic or Latino	29320
▲ Multiple/Other Race, NH	3391
▲ Unknown Race/Eth, NH	10786
▲ White, NH	46847
▲ Total	111509
▲ NH = Non-Hispanic	
▲ Maternal Age	Number of Births
▲ <20	5310
▲ 20-29	55175
▲ 30-39	47481
▲ 40-55	3493
▲ Unknown Age	50
▲ Total	111509
▲ Gestational Age	Number of Births
▲ Preterm (before 37 weeks)	11151
▲ Term (37 weeks and over)	99583
▲ Unknown Gest. Age	775
▲ Total	111509

\*Birth outcomes include multiple gestation pregnancies—for example, twins—and in tables that highlight birth outcomes, each fetus/infant is included as a separate outcome

✉ Get Email Updates

Sign up to receive the COVID Data Tracker Weekly Review.

Email Address:

[What's this?](#)

### Data on COVID-19 during Pregnancy: Birth and Infant Outcomes

Maternal infection from January 25, 2020 - December 31, 2021 using data reported to CDC as of September 9, 2022

114,219

Birth Outcomes among Pregnant People with COVID-19

114,781

Live Born Infants

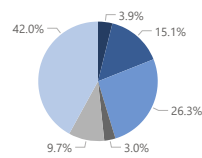
1051

Pregnancy Losses

View by Selected Category

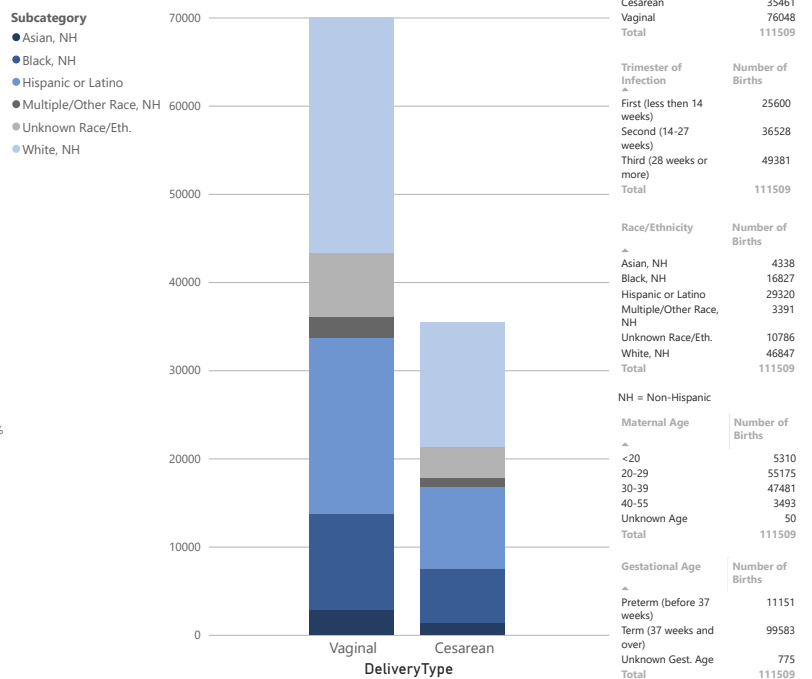
- Trimester of Infection
- Race/Ethnicity
- Maternal Age
- Gestational Age

Total Pregnancies with Known Delivery Type



#### Number of Infants Born Via Vaginal or Cesarean Delivery to People with COVID-19

Information on delivery type was available for 111,509 (96.3%) of birth outcomes.



\*Birth outcomes include multiple gestation pregnancies—for example, twins—and in tables that highlight birth outcomes, each fetus/infant is included as a separate outcome

✉ Get Email Updates

Sign up to receive the COVID Data Tracker Weekly Review.

Email Address:

[What's this?](#)

### Data on COVID-19 during Pregnancy: Birth and Infant Outcomes

Maternal infection from January 25, 2020 - December 31, 2021 using data reported to CDC as of September 9, 2022

114,219

Birth Outcomes among Pregnant People with COVID-19

114,781

Live Born Infants

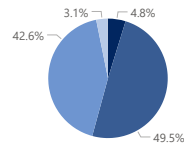
1051

Pregnancy Losses

View by Selected Category

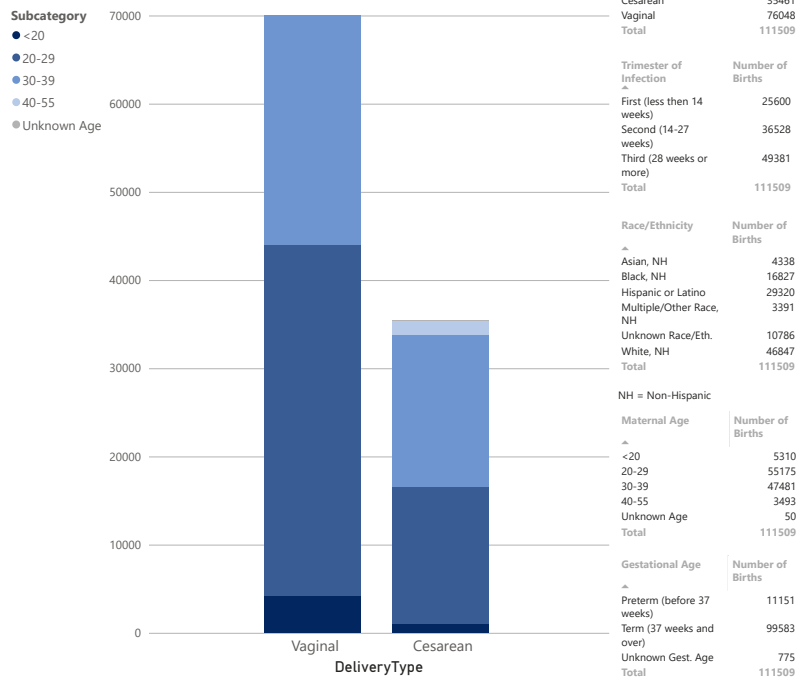
- Trimester of Infection
- Race/Ethnicity
- Maternal Age
- Gestational Age

Total Pregnancies with Known Delivery Type



#### Number of Infants Born Via Vaginal or Cesarean Delivery to People with COVID-19

Information on delivery type was available for 111,509 (96.3%) of birth outcomes.



\*Birth outcomes include multiple gestation pregnancies—for example, twins—and in tables that highlight birth outcomes, each fetus/infant is included as a separate outcome



Get Email Updates

Sign up to receive the COVID Data Tracker Weekly Review.

Email Address:

Email Address

[What's this?](#)

Submit

**Data on COVID-19 during Pregnancy: Birth and Infant Outcomes**

Maternal infection from January 25, 2020 - December 31, 2021 using data reported to CDC as of September 9, 2022

Pregnant People | Data by Month | Birth Outcomes | Live Births

114,219

Birth Outcomes among Pregnant People with COVID-19

114,781

Live Born Infants

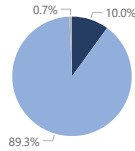
1051

Pregnancy Losses

View by Selected Category

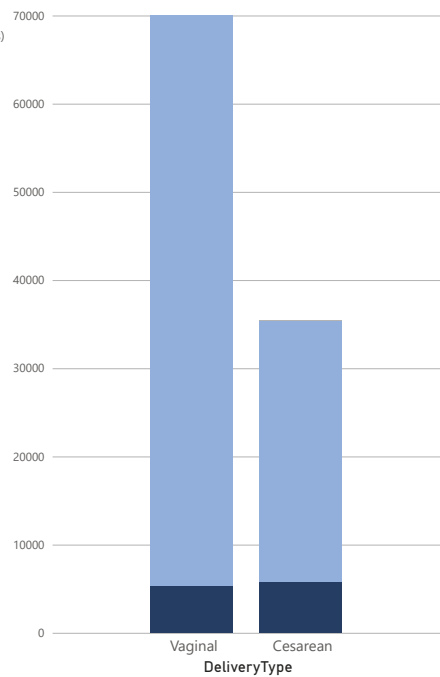
- Trimester of Infection
- Race/Ethnicity
- Maternal Age
- Gestational Age

Total Pregnancies with Known Delivery Type



**Number of Infants Born Via Vaginal or Cesarean Delivery to People with COVID-19**  
Information on delivery type was available for 111,509 (96.3%) of birth outcomes.

- Subcategory
- Preterm (before 37 weeks)
  - Term (37 weeks and over)
  - Unknown Gest. Age



Delivery Type	Number of Births
Cesarean	35461
Vaginal	76048
Total	111509

Trimester of Infection	Number of Births
First (less than 14 weeks)	25600
Second (14-27 weeks)	36528
Third (28 weeks or more)	49381
Total	111509

Race/Ethnicity	Number of Births
Asian, NH	4338
Black, NH	16827
Hispanic or Latino, NH	29320
Multiple/Other Race, NH	3391
Unknown Race/Eth, NH	10786
White, NH	46847
Total	111509

Maternal Age	Number of Births
<20	5310
20-29	55175
30-39	47481
40-55	3493
Unknown Age	50
Total	111509

Gestational Age	Number of Births
Preterm (before 37 weeks)	11151
Term (37 weeks and over)	99583
Unknown Gest. Age	775
Total	111509

\*Birth outcomes include multiple gestation pregnancies—for example, twins—and in tables that highlight birth outcomes, each fetus/infant is included as a separate outcome

 Get Email Updates

Sign up to receive the COVID Data Tracker Weekly Review.

Email Address:

[What's this?](#)

### Data on COVID-19 during Pregnancy: Birth and Infant Outcomes

Maternal infection from January 25, 2020 - December 31, 2021 using data reported to CDC as of September 9, 2022

Pregnant People
Data by Month
Birth Outcomes
Live Births

114,781

Live Births

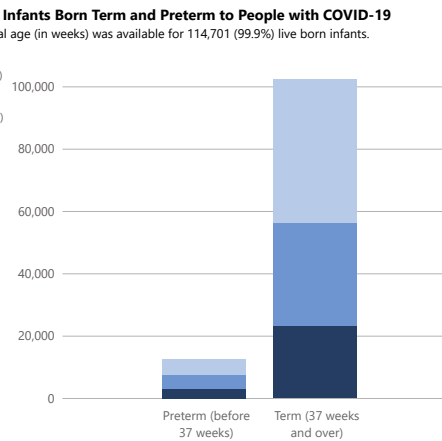
View by Selected Category

- Trimester of Infection
- Race/Ethnicity
- Maternal Age

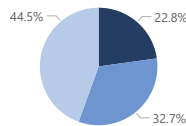
#### Number of Infants Born Term and Preterm to People with COVID-19

Gestational age (in weeks) was available for 114,701 (99.9%) live born infants.

- Subcategory
- First (less than 14 weeks)
  - Second (14-27 weeks)
  - Third (28 weeks or more)

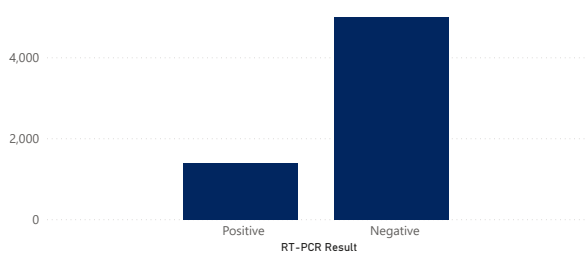


#### Total Infants with Known Gestational Age



#### Laboratory Testing Results for SARS-CoV-2 up to 6 Months of Life among Infants Born to People with COVID-19

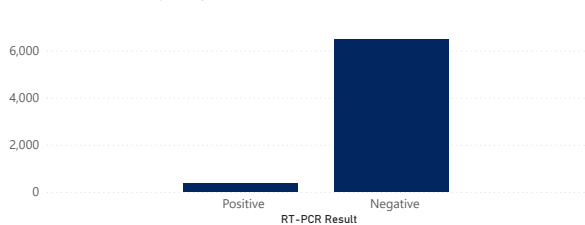
Laboratory testing information was available for 10,930 (9.5%)\* infants.



\*All positive SARS-CoV-2 results are reported, but negative results may not be reported or monitored in all jurisdictions.

#### Laboratory Testing Results for SARS-CoV-2 among Infants Born to People with COVID-19 Who Were Tested at the Birth Hospitalization\*

Laboratory testing information was available for 6,879 (6.8%)\*\* infants.



\*Within the first three days of life or at the birth hospitalization and less than 14 days after birth.

\*\*All positive SARS-CoV-2 results are reported, but negative results may not be reported or monitored in all jurisdictions.

Get Email Updates

Sign up to receive the COVID Data Tracker Weekly Review.

Email Address:

[What's this?](#)

### Data on COVID-19 during Pregnancy: Birth and Infant Outcomes

Maternal infection from January 25, 2020 - December 31, 2021 using data reported to CDC as of September 9, 2022

Pregnant People | Data by Month | Birth Outcomes | Live Births

114,781

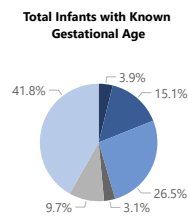
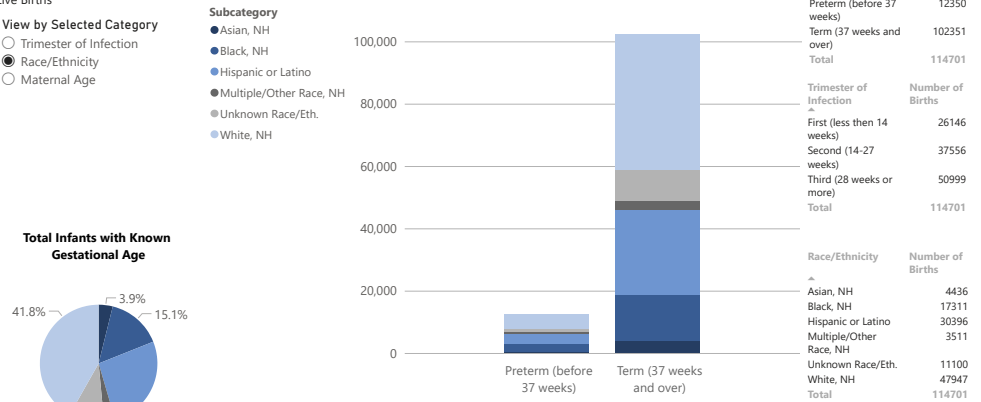
Live Births

View by Selected Category

- Trimester of Infection
- Race/Ethnicity
- Maternal Age

#### Number of Infants Born Term and Preterm to People with COVID-19

Gestational age (in weeks) was available for 114,701 (99.9%) live born infants.



Term or Preterm	Number of Births
Preterm (before 37 weeks)	12350
Term (37 weeks and over)	102351
<b>Total</b>	<b>114701</b>

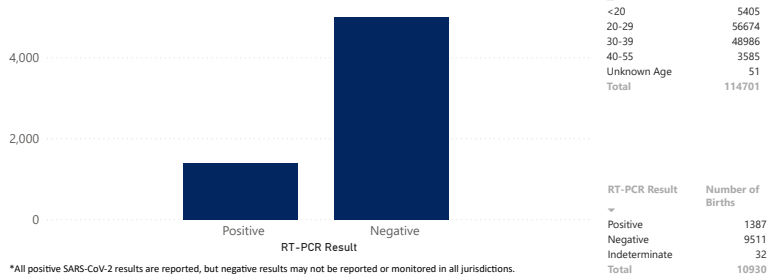
Trimester of Infection	Number of Births
First (less than 14 weeks)	26146
Second (14-27 weeks)	37556
Third (28 weeks or more)	50999
<b>Total</b>	<b>114701</b>

Race/Ethnicity	Number of Births
Asian, NH	4436
Black, NH	17311
Hispanic or Latino	30396
Multiple/Other Race, NH	3511
Unknown Race/Eth.	11100
White, NH	47947
<b>Total</b>	<b>114701</b>

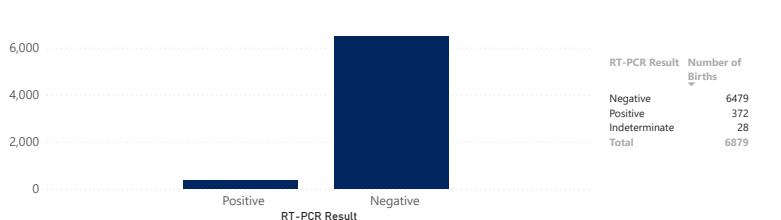
#### Laboratory Testing Results for SARS-CoV-2 up to 6 Months of Life among Infants Born to People with COVID-19

Laboratory testing information was available for 10,930 (9.5%)\* infants.



#### Laboratory Testing Results for SARS-CoV-2 among Infants Born to People with COVID-19 Who Were Tested at the Birth Hospitalization\*

Laboratory testing information was available for 6,879 (6.8%)\*\* infants.



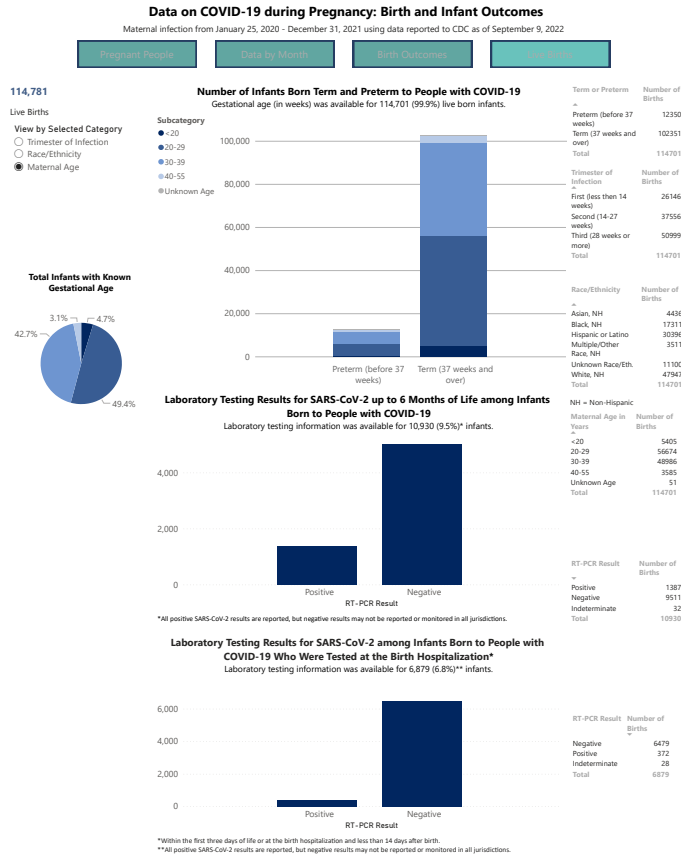
\*Within the first three days of life or at the birth hospitalization and less than 14 days after birth.  
 \*\*All positive SARS-CoV-2 results are reported, but negative results may not be reported or monitored in all jurisdictions.

Get Email Updates

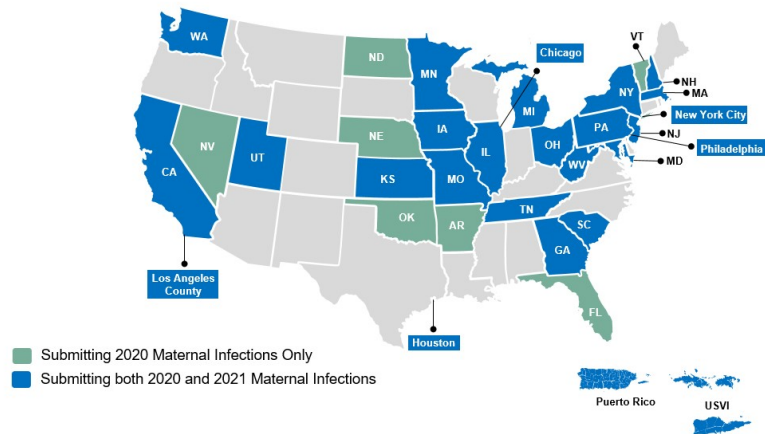
Sign up to receive the COVID Data Tracker Weekly Review.

Email Address:

[What's this?](#)



with COVID-19 and their Infants



## Footnotes and Additional Information

Expand each accordion to view footnotes

### Footnotes

#### About the Data:

This page is updated quarterly. These data are from laboratory-confirmed cases of SARS-CoV-2 infection in people during pregnancy, including on the day of delivery, among those with the first positive SARS-CoV-2 infection occurring during 2020 and 2021. Data on their deliveries and on their infants are also reported here and are being submitted through 2022. Only a subset of jurisdictions that report data for 2020 infections also report data for 2021 infections.

Jurisdictions submit data to CDC, where they are processed and combined. Counts may vary each quarter as jurisdictions examine data for errors and make necessary changes. Pregnancy status is determined through case investigations using the [COVID-19 case report form](#) or by matching reported cases with other sources of information to identify pregnancy status. Data are abstracted using standard forms. Sources of data include routine public health investigations, vital records (e.g., birth certificates or administrative data), laboratory reports, and medical records. Completeness of the collected data, particularly data on variables obtained through interviews or medical record abstraction, may vary by jurisdiction.

More information about how data are collected can be found on the [SET-NET website](#):

- [Risk factors for illness severity among pregnant women with confirmed SARS-CoV-2 infection – Surveillance for Emerging Threats to Mothers and Babies Network, 22 state, local, and territorial health departments, March 29, 2020 -March 5, 2021](#)
- [Birth and Infant Outcomes Following Laboratory-Confirmed SARS-CoV-2 Infection in Pregnancy — SET-NET, 16 Jurisdictions, March 29–October 14, 2020](#)
- [SARS-CoV-2 infections among neonates born to women with SARS-CoV-2 infection: maternal, pregnancy and birth characteristics](#)
- [Recurrent SARS-CoV-2 RNA Detection after COVID-19 Illness Onset during Pregnancy](#)
- [Preterm Birth among Pregnant Persons with Severe Acute Respiratory Syndrome Coronavirus 2 Infection](#)
- [Breastmilk feeding of infants at birth among people with confirmed SARS-CoV-2 infection in pregnancy — SET-NET, Five States, March 29, 2020–December 31, 2020](#)
- [Pregnancy and Infant Outcomes by Trimester of SARS-CoV-2 Infection in Pregnancy – SET-NET, 22 Jurisdictions, January 25, 2020 - December 31, 2020](#)

There are delays between when confirmed COVID-19 case reports among pregnant people are reported to CDC and when pregnancy outcome data—for example, whether an infant was born term or preterm, or via vaginal or cesarean delivery—are available. These delays are caused by the duration of pregnancy and the challenges of locating medical records of pregnant people after they have delivered. Also, reports of pregnancy losses depend on linkages to existing records, so total pregnancies, including those resulting in pregnancy losses, may not be reported through this surveillance. All positive SARS-CoV-2 results are reported for infants born to people with COVID-19, but negative results may not be

reported or monitored in all jurisdictions.

For more information on how CDC collects COVID-19 surveillance data, see [FAQ:COVID-19 Data and Surveillance](#)





### Cite COVID Data Tracker

Centers for Disease Control and Prevention. COVID Data Tracker. Atlanta, GA: US Department of Health and Human Services, CDC; 2022, October 11. <https://covid.cdc.gov/covid-data-tracker>

### COVID-19 Home >

All COVID-19 topics including prevention, travel, work, and school

#### HAVE QUESTIONS?

-  Visit CDC-INFO
-  Call 800-232-4636
-  Email CDC-INFO
-  Open 24/7










#### CDC INFORMATION

- About CDC
- Jobs
- Funding
- Policies
- File Viewers & Players

#### Privacy

- FOIA
- No Fear Act
- OIG
- Nondiscrimination
- Accessibility
- Vulnerability Disclosure
- Policy

#### CONNECT WITH CDC

-    
- 
-    
- 

U.S. Department of Health & Human Services

USA.gov

CDC Website Exit  
Disclaimer 

