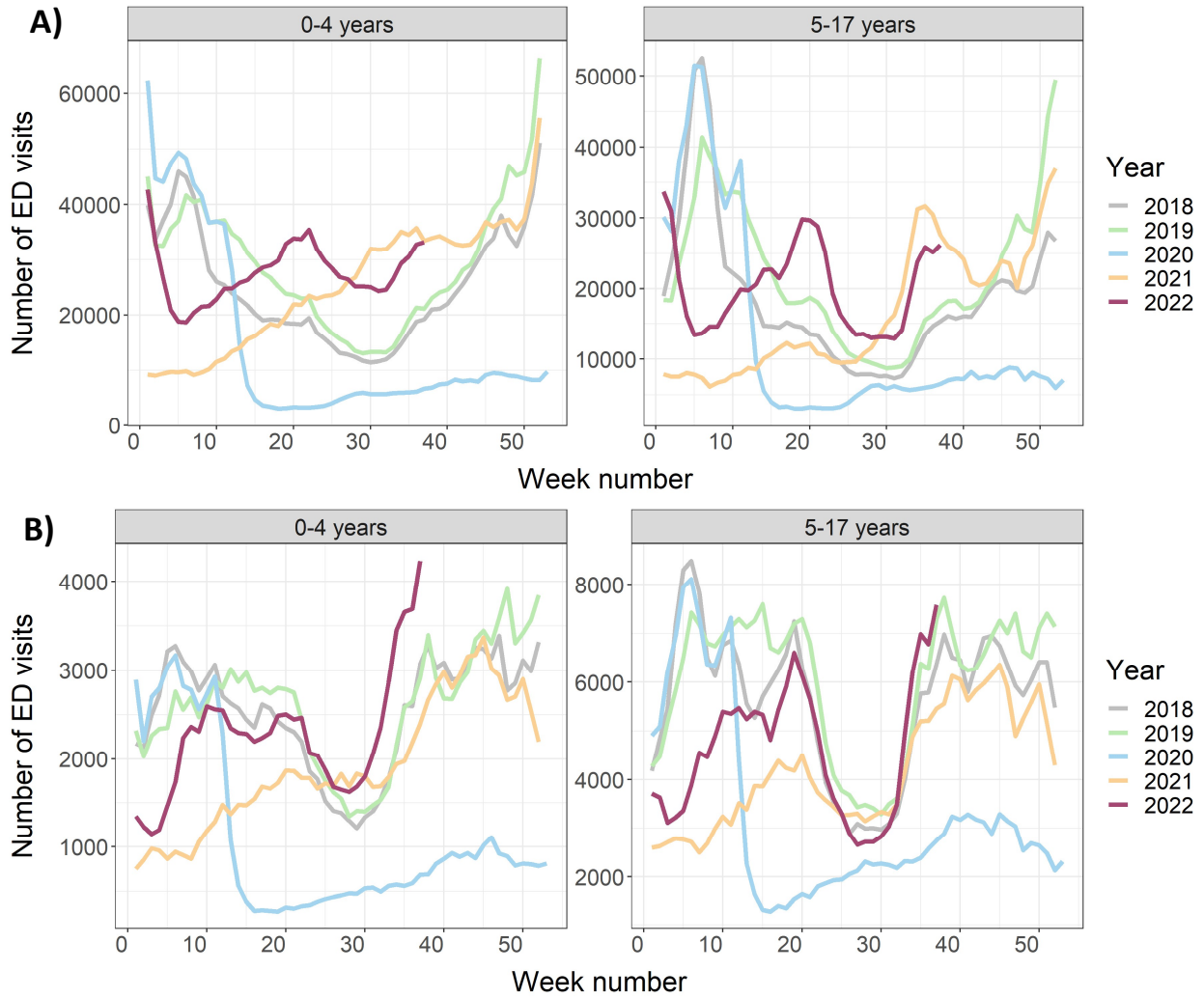


**SUPPLEMENTARY FIGURE 2. Weekly trends in the number of reported emergency department visits for acute respiratory illness (A) and asthma/reactive airway disease (B), by age group and year — National Syndromic Surveillance Program, United States, January 2018–September 2022\***



**Abbreviation:** ED = emergency department.

\* The last reporting week (week 37) ended on September 17, 2022; data from this week are considered preliminary.